

LESO-PB

SOLABS: Development of a Novel Solar Thermal Facade Cladding System

Munari Probst, M.-C.
Roecker, C.

EUROSUN 2006

27-30 June 2006

SOLABS: Development of a Novel Solar Thermal Facade Cladding System**Munari Probst, M.-C. ; Roecker, C.****Presented at:** EuroSun 2006, Glasgow, UK, 27-30 June 2006

Within the European project SOLABS (Development of unglazed coloured solar absorbers) a novel performing unglazed metal collector has been developed, using a coloured absorber and with special focus on the architectural integration of the solar system. The paper first describes the criteria leading the architectural integration quality, as recorded by a large European survey. It describes the design methodology applied to develop a collector facilitating the building integration, satisfying the aesthetic expectations of the users, but also responding to energy production needs and to cost requirements. An analysis of the formal characteristics of the resulting collector design is presented, in relation to the integration criteria and to the specific users' wishes recorded by the survey. Finally, two simulations of collector integration in existing buildings are presented and compared to the original solar system integrations.

Keywords: building integration, thermal collector, unglazed, colour, SOLABS.

Keyword(s): Building integration; Thermal collector; Unglazed ; Colour; SOLABS
More info: Solar Energy and Building Physics Laboratory

Reference: LESO-PB-CONF-2006-011

Notice créée 2006-06-19, modifiée 2006-06-19

SOLABS: Development of a Novel Solar Thermal Facade Cladding System

Maria Cristina Munari Probst*, Christian Roecker*

Ecole Polytechnique Fédérale de Lausanne EPFL-ENAC-LESO_PB

Bât. LE zone 18, Lausanne, CH-1015, Switzerland

* Corresponding Authors, email : mariacristina.munariprobst@epfl.ch; christian.roecker@epfl.ch

Abstract

Within the European project SOLABS (Development of unglazed coloured solar absorbers) a novel performing unglazed metal collector has been developed, using a coloured absorber and with special focus on the architectural integration of the solar system.

The paper first describes the criteria leading the architectural integration quality, as recorded by a large European survey. It describes the design methodology applied to develop a collector facilitating the building integration, satisfying the aesthetic expectations of the users, but also responding to energy production needs and to cost requirements.

An analysis of the formal characteristics of the resulting collector design is presented, in relation to the integration criteria and to the specific users' wishes recorded by the survey.

Finally, two simulations of collector integration in existing buildings are presented and compared to the original solar system integrations.

Keywords: building integration, thermal collector, unglazed, colour, SOLABS.

1. Introduction

The EU project SOLABS (Feb 2003- Dec 2006) is developing a novel unglazed solar thermal collector for building façade, resorting to coloured selective coatings on steel material. In a context where the lack of solar design is considered to be one of the main reasons of the slow spread of solar thermal technologies (even when the technology is already efficient and cost effective), the project intends to produce a novel collector conceived as a *multifunctional construction element*, to *ease the architectural integration* (both in new buildings and in renovations), and able to *meet the users' aesthetics expectations*. [6][7][8]

2. Project phases

To be able to produce a new collector meeting the above described goals, the architectural integration issues were articulated into 4 phases:

- Identification of the general architectural criteria defining the integration quality.
- Selection of potential collector concepts.
- Exploration of users' wishes and preferences for the proposed options.
- Development of the final collector combining users' expectations and technical needs.

3. Integration criteria

A large survey over the way(s) European architects and engineers perceive the integration quality of Building Integrated Solar Thermal (BIST) was designed and conducted at the beginning of the project (170 fully completed questionnaires). [1]

The questionnaires were asked to rate the global integration quality of ten selected examples of existing BIST. A detailed evaluation of the module sizes, shapes and colours in relation to the

integration context was also proposed, to help clarify the bases of the global judgment. The architects' votes were remarkably consistent, confirming the existence of general criteria defining quality in architectural integration of BIST (*see detailed criteria description in ref 1*). They can be summarized in 2 points:

- System size and position, module size and shape, jointing type, collector surface texture and material are characterizing integrations as much as does the absorber colour. Each of these characteristics has to be coherent with the whole building design logic for the integration to be considered successful.
- The use of the energy system as a multifunctional construction element (façade cladding, roof covering etc...) can greatly ease the integration design work. Building design logic is in fact easier to follow when the architect has to balance fewer elements.

Unfortunately the formal characteristics of most products proposed by the market are just issued directly from the energetic optimisation of the technology, without the due awareness of the architectural impact their integration may have on a building.

4. Design methodology

Any new collector design has to be defined within the formal limits imposed by its specific solar thermal technology (*see methodology description in ref 1*).

In this specific case the SOLABS team had to explore the formal possibilities offered by the *unglazed – hydraulic - flat plates* - collector technology, with the further constraint to use steel material for the absorber.

As unglazed thermal collectors for façades are de facto façade metal claddings, the original approach was to select options directly inspired by existing façade metal claddings (already developed to respond to building needs), rather than from existing solar collectors.

For evaluation, these claddings were divided into three families:

- *Profiled sheets*: very large non modular metal sheets providing a homogeneous covering, thanks to the absence of visible jointing between the cladding sheets.
- *Cassettes modules*: modular elements of geometrical proportions varying from 1:1 to 1:4, with visible jointing, well-suited for cladding of large wall surfaces. Due to the visible jointing, the careful choice of the module dimensions is the key to a successful cladding.
- *Panel planks*: cut to length modules with a width ranging from 20cm to 40cm. The maximum length of individual planks is usually 4.00m. The variable width of the reveals (from 0 to 30mm) makes the use of even standard modular element more flexible, so that the panel-planks can be used for the cladding of numerous architectural objects.

As only cladding types able to support a hydraulic system could be taken into account, profiled sheets were skipped, being hardly adaptable from the technical point of view.

Cassette modules and panel plank were both considered realistic options.

Then possible module shapes, sizes, jointing, surface texture, finishing, colours options were pre-evaluated within the SOLABS team to propose realistic options in a new questionnaire.

5. Users wishes

This new questionnaire was designed to explore the users' statistical preferences (mainly addressed to architects, but also to engineers and façade manufacturers) for collector appearance. Each above mentioned collector characteristic was investigated in terms of aesthetic criteria and desired freedom/standardization (*see detailed results in ref.2*).

5.1 Module shape, size, jointing

5.1.1 The cassette option.

Starting with the analysis of the cassette option, a definition of the level of acceptable module standardisation was asked.

The majority of the questioned architects selected as minimum requirement a cut to length module to have at least the freedom in one dimension. Moreover almost one third of the architects said that a made to measure module is a prerequisite.

For the jointing, the profile free solution (negative jointing) is the most appreciated. Frame jointing is well behind, even though it is still considered acceptable.

5.1.2 The plank option.

The analysis of the panel-plank starts with the most suitable panel width, as the plank length freedom is already characterizing this kind of cladding. The ideal size satisfying most of the interviewees is around 30 cm.

A variable width reveal is considered a suitable jointing technique by all the interviewees, architects and engineers, in order to have a flexible panel plank solar element in both dimensions.

All interviewees considered both the cassette and the plank to be valid solutions for the SOLABS unglazed collector, with a slightly better rating for the plank.

5.2 Surface colours, textures and finishing

5.2.1 Surface colours.

The wishes concerning the number of colours to be provided in the SOLABS palette brought a definitive challenge. Two thirds of the interviewees wish a palette made of more than ten colours and forty per cent of the architects suggest a palette with more than 20 colours. Moreover, for two thirds of the questioned architects the possibility to freely choose a custom colour is considered to be an essential requisite.

To help define in which direction the SOLABS colour development was to be pushed further, we asked to select three colours (out of 24) which should definitely be included in the SOLABS palette. Architects' most demanded colours are by far the greys, no matter if they come from the North, the Centre or the South of Europe. Blues and reds are also selected options while greens, browns and yellows are less popular.

5.2.2 Surface texture and finishing.

As expected the preferences of both architects and engineers have gone to the most traditional surface textures proposed: flat and slightly profiled. The also proposed embossed and lenticular perforated surfaces are considered not appropriate for façade use, even though they seem to interest a few people.

The question about surface finishing leaves no doubts: 90% of the interviewees think it should be matt rather than polished.

6. The resulting collector

A careful balancing work between defined users' wishes (aesthetic preferences and need for freedom), production feasibility, cost requirements and energy performances was then conducted.

The joint efforts of SOLABS engineers and architects, starting from the clear identification of the problems to be solved and the knowledge of users' wishes, made possible the design of a product that should respond to building needs and to the market demand.

6.1 Module shape and size

Considering the high level of freedom in module size requested by the users for that option, the cassette was abandoned and the development was focused on the plank.

The resulting product is a cut to length plank collector of 29 cm width, with variable negative jointing from 0 to 2 cm, very similar to the largely available planks modules proposed by the façade metal cladding market (fig. 2).

The hydraulic system is glued to the back of the collector to ensure both an optimal heat transfer and a perfectly smooth front surface. The horizontal piping system is designed to be compatible with the cut to length dimension of the modules. Similarly, the hydraulic junction between the planks, ensured by a brass manifold, is designed to be compatible with the variable width of the horizontal jointing (Fig. 1).

To extend the range of possible integration solutions, the decision was taken to additionally offer dummies elements, giving the possibility to apply a homogeneous cladding also in non-optimally exposed surfaces or on small areas.

6.1 Surface colour, texture, finishing

The surface of the absorber is flat with a matt finish, as wished by 90% of the interviewees. Considering the users' desire of large colour freedom, the decision was taken to use a selective coloured painting to be applied to the already formed collector preferably to coloured coil coated metal sheets to make the collector absorber. With this option, the production of a specific colour is not limited by the need to produce significant quantities as for coil coating, and a large colour palette can be proposed. As the paint can be produced in small quantities and in short time, customers will also have the possibility to ask for a specific colour on demand. The coloured selective paintings used in the project were developed by the National Institute of Chemistry of Slovenia, a SOLABS partner. Different absorptance and emittance values (α and ε) characterize the various colours of the palette, and the architects will have to select the paint balancing aesthetics and energy efficiency.

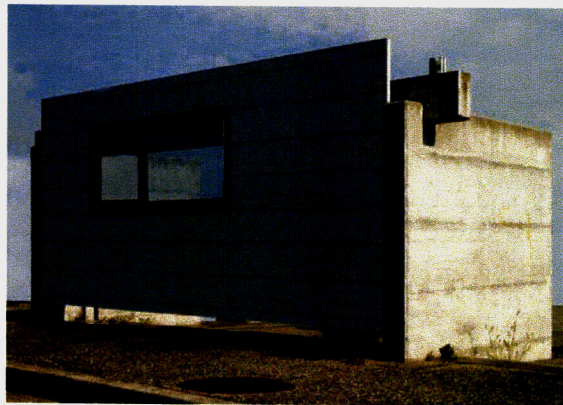
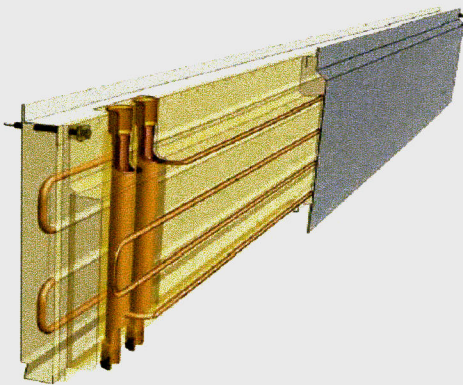


Fig.1. SOLABS plank hydraulic system (Clipsol SA) Fig. 2.Demonstration stand at Demosite-EPFL

7. Integration simulations

A few integration simulations (Photoshop) have been proposed to test the formal possibilities offered by the SOLABS collector in relation to the previously described integration criteria.

As a base for the first simulations we have chosen two buildings already proposed in the first part of the questionnaire (case 3, fig 3-a, and case 4, fig. 4-a) whose original integrations were rated respectively unsatisfactory and just acceptable by the respondent architects (Fig 3-b and 4-b). *(See detailed analysis of architects' rating in Ref. [1])*

The existing solar systems have been "removed" to restore the appearance of the buildings before the integration, and to better understand the logic regulating the original design (Fig.3-c, and 4-c). Then a new integration, following the whole building design logic, has been proposed using the SOLABS plank (Fig.3-d and 4-d). The flexibility of the new collector made it possible and even easy to stay within the pre-existing buildings design logic.

8. Conclusion

The true understanding of the characteristics affecting the integration quality of the collector confirmed the importance of conceiving the novel collector as a multifunctional construction element, and underlined that it had to be flexible enough to adapt to different buildings and contexts.

Consulting the users was fundamental to specify in which direction focus the research to ensure that the new collector will meet a real market.

The broad range of complementary competences brought in by the different partners of the consortium led to original solutions able to balance architectural quality, energy performances, production and cost constraints.

The relatively small width of the plank, the flexibility in both dimensions, the availability of dummy elements together with the large choice of surface colours makes the novel collector a versatile cladding easy to integrate both in new building and renovations.



Fig. 3-a. Single family house, existing integration

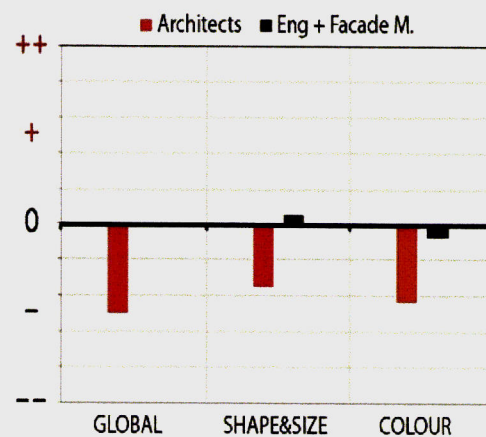


Fig. 3-b. Rating given to the existing integration.

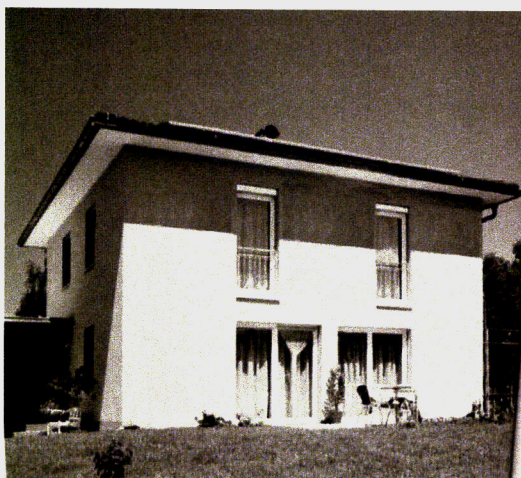


Fig. 3-c. The building before the integration



Fig. 3-d. New integration using the SOLABS plank



Fig. 4-a. Youth hostel renovation (existing integr.)

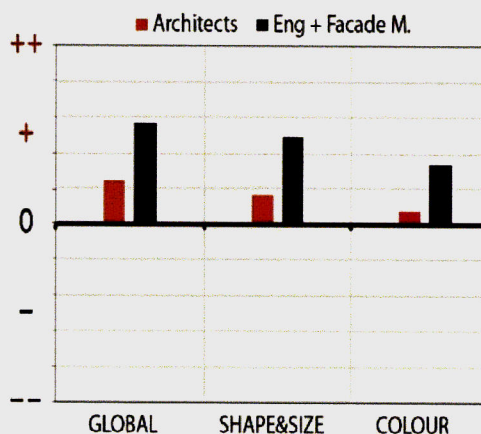


Fig. 4-b. Rating given to the existing integration



Fig. 4-c. The building before the integration



Fig. 4-d. New integration using the SOLABS plank

References

- [1] MC.Munari Probst and C.Roecker, Integration and formal development of solar thermal collectors, in Proceedings PLEA2005, Beirut, Lebanon, pp.497-502, 2005.
- [2] MC.Munari Probst, C.Roecker, A. Schueler, Architectural integration of solar thermal collectors: results of an European survey", in Proceedings ISES 2005, Orlando, Florida, 2005.
- [3] MC. Munari Probst, C. Roecker, A. Schueler, Impact of new developments on the integration into facades of solar thermal collectors, in Proceedings EUROSUN 2004, Freiburg im Breisgau, Germany, 2004.
- [4] W.Weiss (Ed), Solar Heating systems for Houses - A design handbook for solar combisystem, James and James, London, 2003.
- [5] I. Bergmann, Facade integration of solar thermal collectors – A new opportunity for planners and architects. Renewable Energy World, 5 (3), 89-97, 2002.
- [6] R. Krippner, Solar Technology – From Innovative Building Skin to Energy-Efficient Renovation. In: Schittich, C., (Ed.), Solar Architecture, Birkhauser - Edition Detail, pp.27-37, 2003.
- [7] R. Krippner, T. Herzog, Architectural aspects of solar techniques – Studies on the integration of solar energy systems. In Proceedings EUROSUN 2000, 3rd ISES-Europe Solar Congress, Copenhagen, Denmark, 2000.
- [8] A.G Hestnes, "Building integration of solar energy systems", in Solar Energy, 67 (4-6), 181-187, 2000.



Home

Important Dates

EuroSun Committee

EuroSun Program

Abstract Submission

Paper Submission

Poster Format

Registration

Accompanying Persons

International exhibition

Technical Tours

Sponsorship

Accommodation

Travel Information

What's New at EuroSun

Contact

Welcome to EuroSun 2006

Dear Friends,

It is my pleasure to invite you to the conference of EuroSun 2006, in Glasgow.

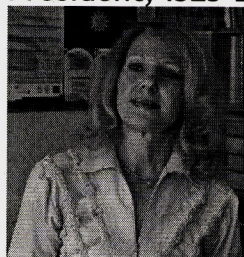
Having observed the hard work put in by the EuroSun committees and especially after my visit to the fine city of Glasgow, I can confidently assure you that you will enjoy a successful conference. The main theme this year is the role that renewable energy technologies can and must play in a sustainable energy future. The plenary lectures and workshops will consider the strategic social, technical, economic and market issues that need to be addressed. Another theme of EuroSun 2006 is education that will include a special schools day and workshop. There will also be a trade exhibition, highlighting the latest products from innovative companies in Scotland and across Europe. As in previous EuroSun conferences, you will have the opportunity to catch up with the latest results of research into the whole spectrum of renewable energy applications and to meet up with old friends, participate in the debates and contribute your ideas. Indeed, EuroSun 2006 offers a unique opportunity to the European renewables community to gather in a brain storming of new developments and future directions. And of course, the beauty of Scotland and the friendly hospitality of its citizens will ensure that your stay will be most pleasurable and memorable.

An Invitation to attend the EuroSun 2006 conference

I am looking forward to seeing you in Glasgow.

With my warmest greetings and welcoming wishes,

Dr. Despina Serghides,
President, ISES-Europe



Organised by:



The
Solar Energy Society (UK-ISES)



Scottish Solar Energy Group



ISES-Europe

with the support
of:

GLASGOW

CALEDONIAN
UNIVERSITY
Glasgow!
 Scotland with style™
Greater Glasgow and Clyde
Valley Tourist Board

ISES

International
Solar Energy
Society
SUST.
THE Lighthouse ON SUSTAINABILITY
Energy Centre for Sustainable
Communities
Thameswey
 Energy Ltd

EARTHSCAN
 Delivering sustainability

A welcome from the Organising Committee

Held every two years since its launch in 1996 this will be the 6th EuroSun conference. Leading scientists, engineers, architects and representatives from industry and business will be present at this premier European solar energy conference to discuss the latest technological developments and business opportunities in solar and other renewable energy forms. The conference is located at:

Glasgow Caledonian University
Cowcaddens Road
Glasgow G4 0BA
Scotland, UK

[Learn more about Glasgow...](#)

In addition, the conference will include:

- Seminars and workshops on special topics
- Technical tours to projects demonstrating the use of solar energy in northern latitudes and other renewable energy technologies
- A trade exhibition of commercially-available technologies and expertise in solar and other renewable energy.

Of course, there will also be social events, where you will be able to catch up with old friends, make new ones, and sample the traditional warm Scottish hospitality.

We warmly invite you to Glasgow, Scotland, to participate in EuroSun 2006 and we look forward to seeing you in Glasgow !

Dr. Despina Serghides
International Chair, President, ISES-Europe

John Thorp
Chair, UK-ISES

Prof. Nicola Pearsall
Chair, Scientific-Technical Committee

Dr. Stas Burek

Chair, Organising Committee, Scottish Solar Energy Group