

Situation projectuelle - 2024
 Rayon = 280 m
 Surface = 24,8 ha

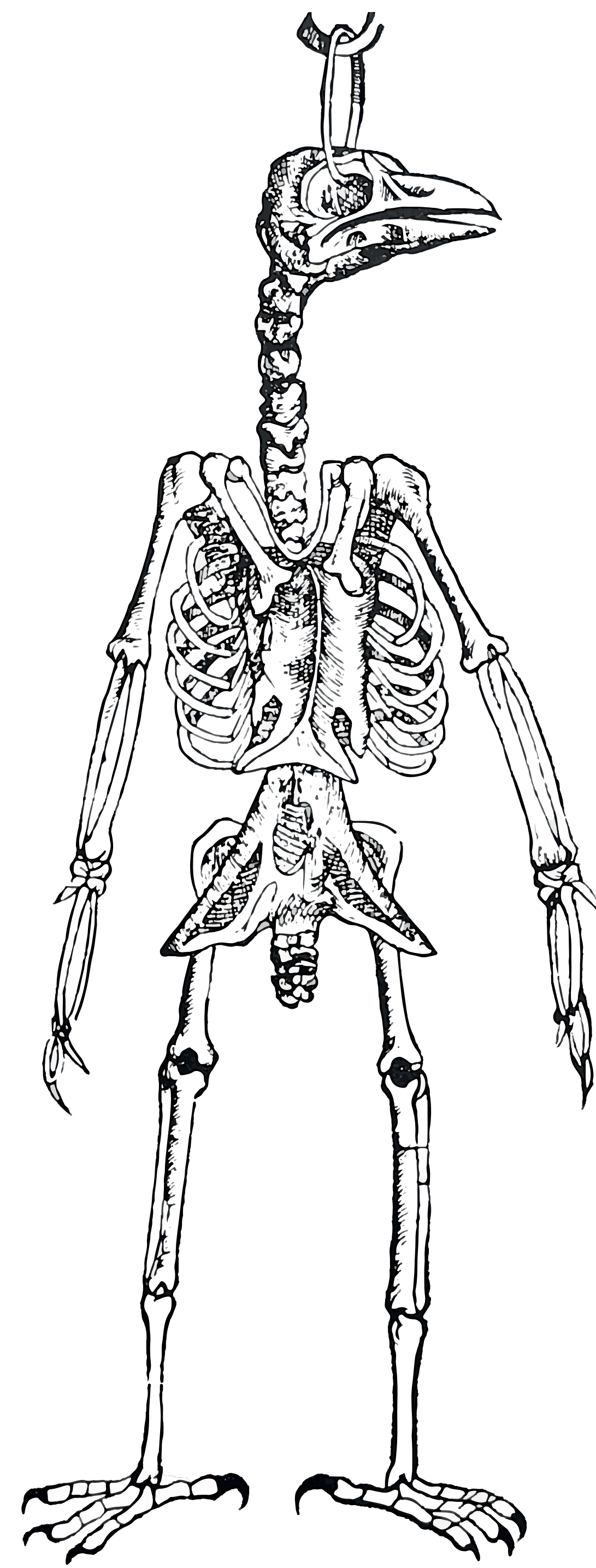
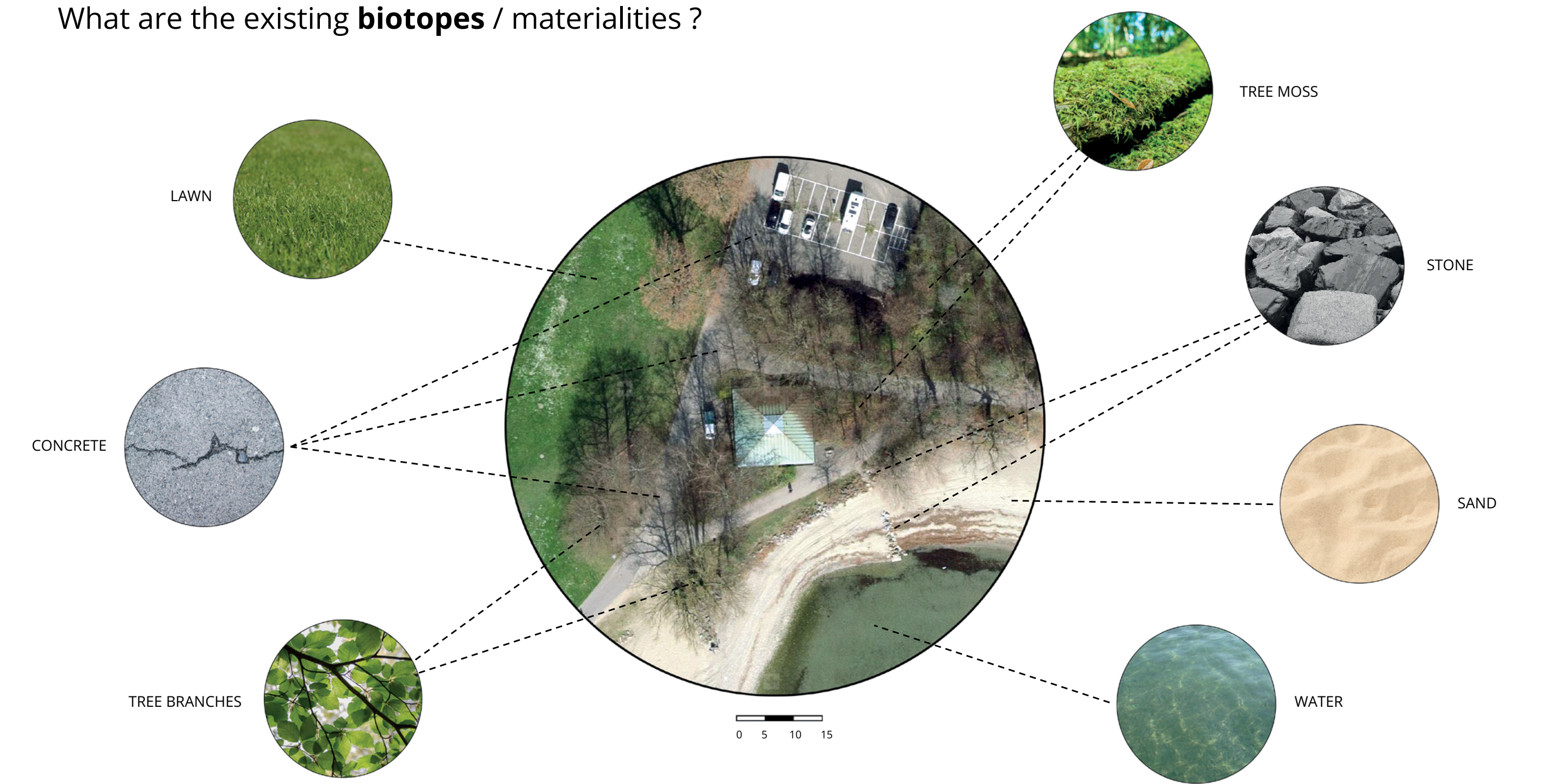
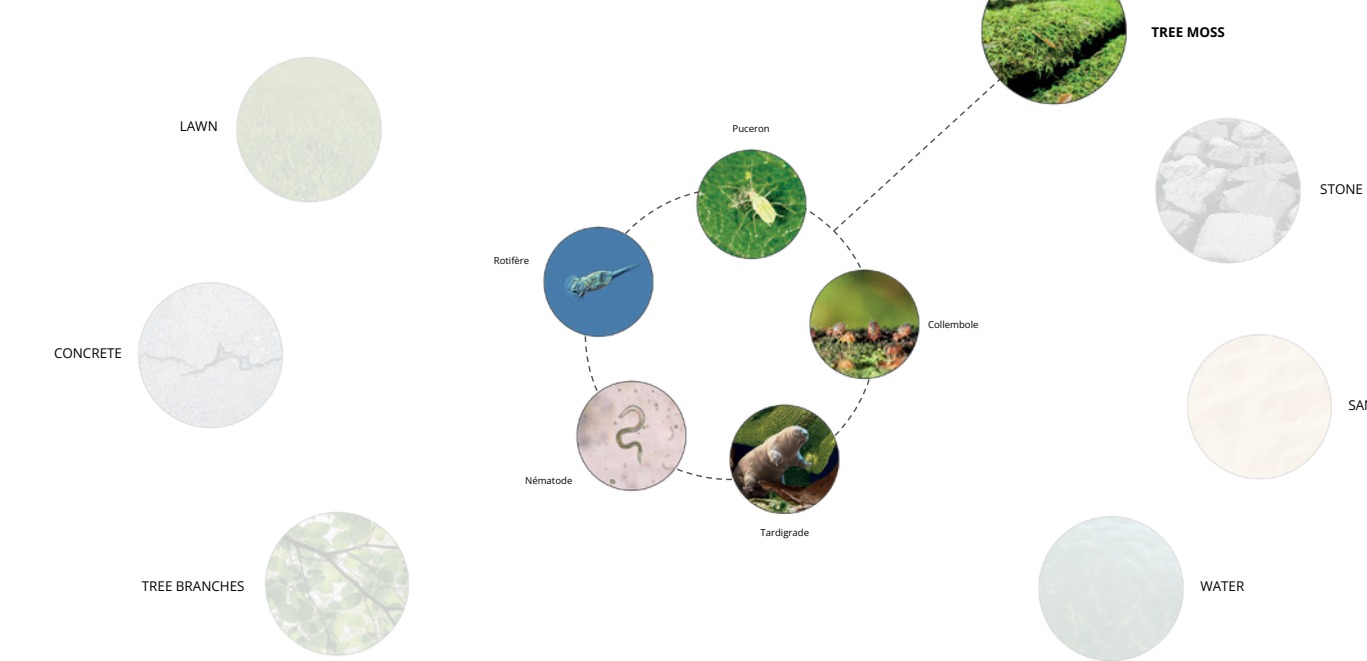


Fig. 2 : Squelette d'un oiseau
 [L'Histoire de la nature des oiseaux. Belon, Pierre 1517-1564; Glardon, Philippe]

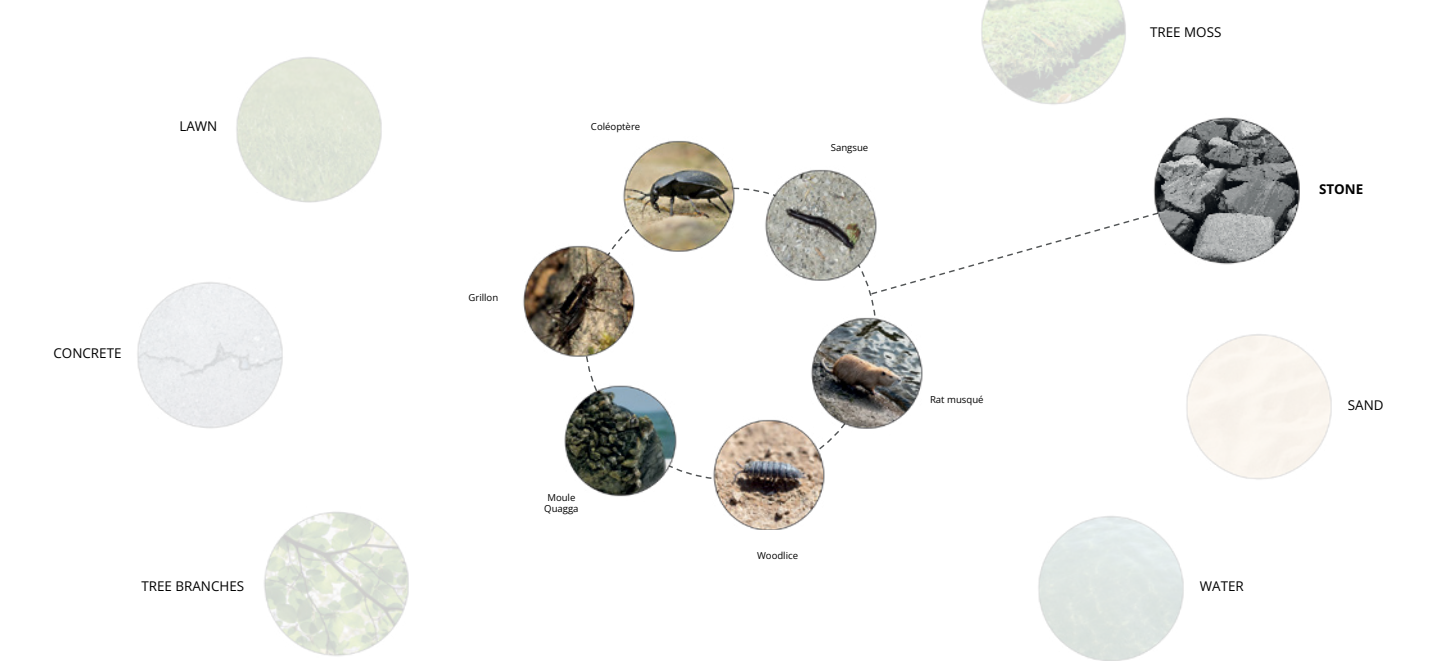
What are the existing biotopes / materialities ?



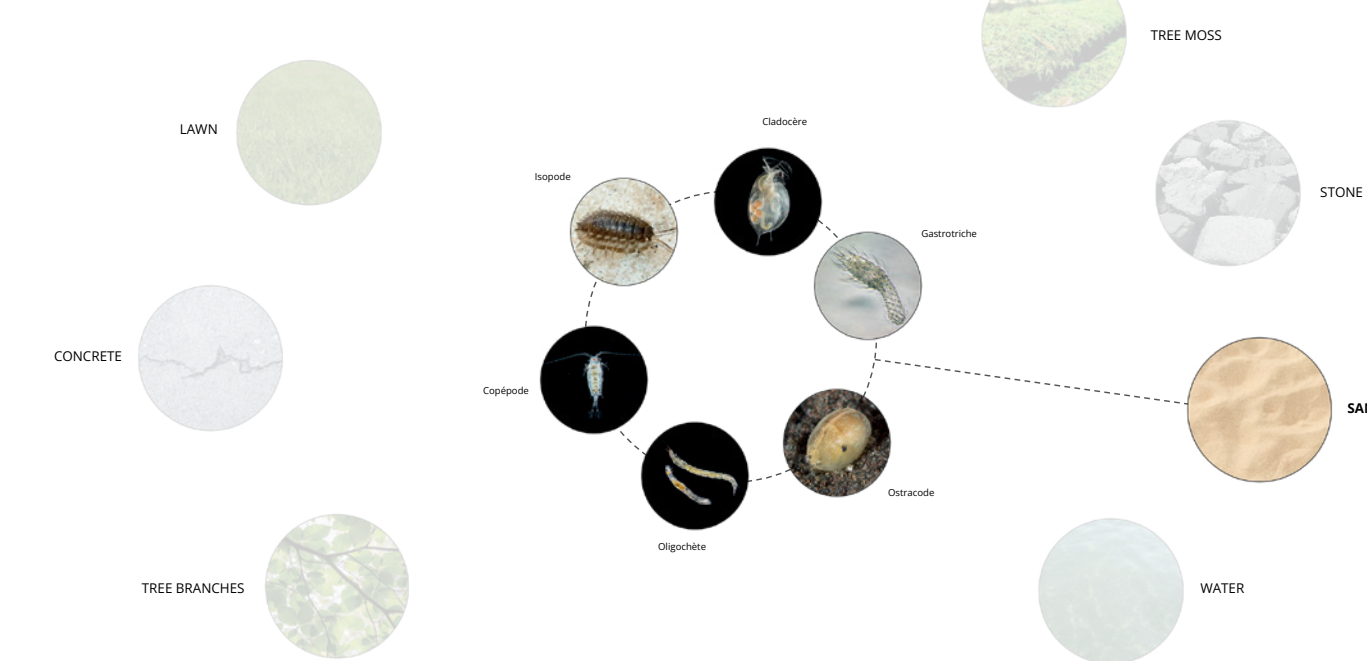
What type of fauna lives in these biotopes ?



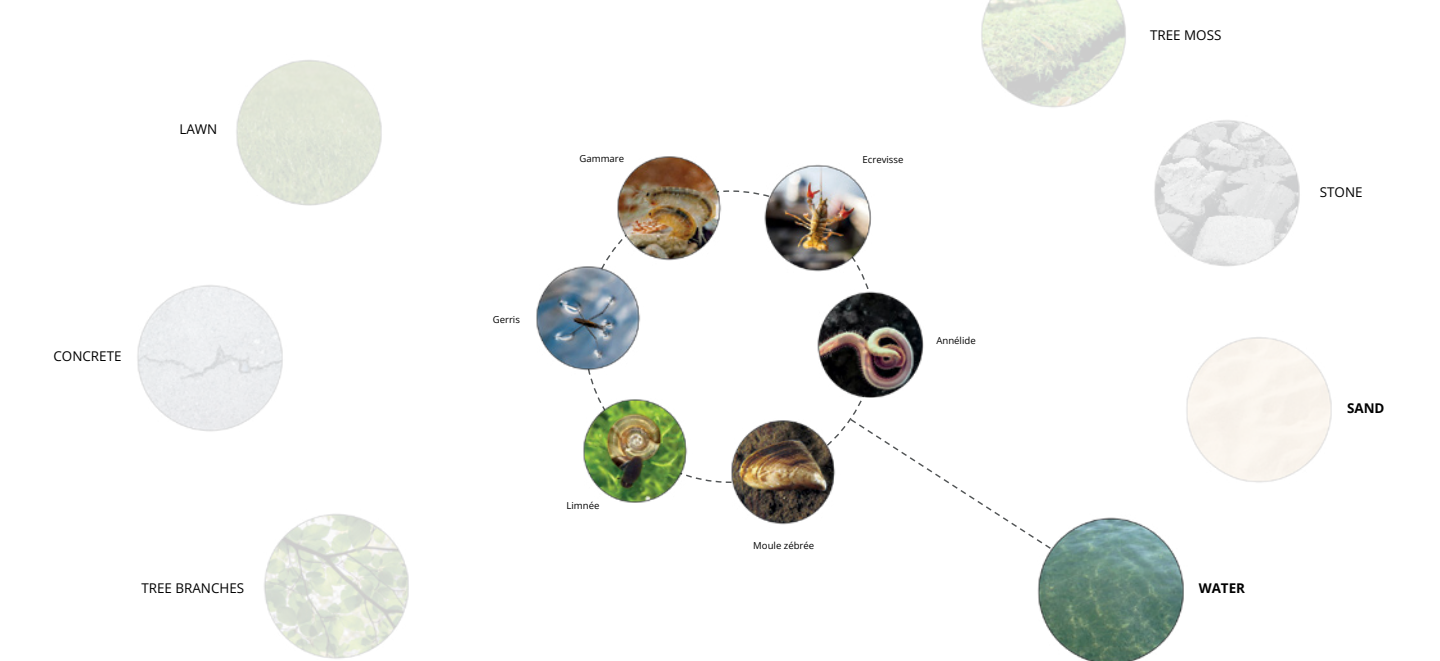
What type of fauna lives in these biotopes ?



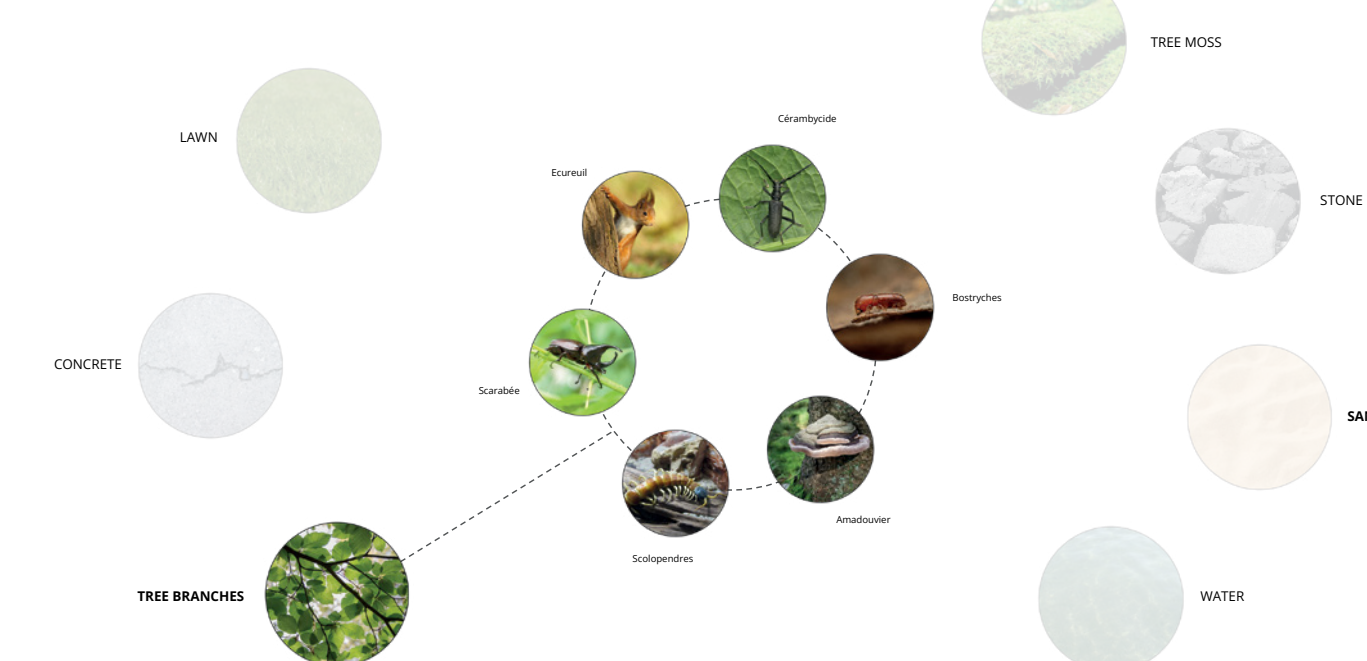
What type of fauna lives in these biotopes ?



What type of fauna lives in these biotopes ?



What type of fauna lives in these biotopes ?



What type of fauna lives in these biotopes ?

