



Snowfall in Northern Finland derives mostly from ice clouds

Claudia Mignani^{1,a}, Lukas Zimmermann¹, Rigel Kivi², Alexis Berne³, and Franz Conen¹

¹Department of Environmental Sciences, University of Basel, 4056 Basel, Switzerland

²Space and Earth Observation Centre, Finnish Meteorological Institute, 99600 Sodankylä, Finland

³Environmental Remote Sensing Laboratory, Swiss Federal Institute of Technology in Lausanne, 1015 Lausanne, Switzerland

^anow at: Department of Atmospheric Science, Colorado State University, Fort Collins, CO 80521, USA

Correspondence: Claudia Mignani (claudia.mignani@colostate.edu)
and Franz Conen (franz.conen@unibas.ch)

Received: 5 February 2022 – Discussion started: 14 March 2022

Revised: 14 September 2022 – Accepted: 14 September 2022 – Published: 19 October 2022

Abstract. Clouds and precipitation play a critical role in the Earth's water cycle and energy budget. We present ground-level observations of snowfall coinciding with radiosonde launches in Sodankylä, Finland (67.367° N, 26.629° E) through a period of 8 cold months (October–April) in 2019 and 2020. They comprise 7401 depositing snow particles detected by a snowflake camera and 468 radiosonde profiles. Our results show that precipitating clouds were extending from ground to at least 2.7 km in altitude. Approximately one-quarter of them were mixed phase and the rest were likely fully glaciated. Estimations of the cloud top temperatures indicate that in roughly half of the snowfall events, ice might have been initiated through heterogeneous freezing. For such cases, the predicted ice-nucleating particle concentrations active at cloud top temperatures could explain the analysed ice crystal particle concentrations observed near ground in approximately one- to two-thirds of the cases. For the rest, ice multiplication was likely active. In a warmer climate, the relative proportion of solid to liquid cloud particles will probably decrease, with implications on the radiation balance.

1 Introduction

Snowfall has a major impact on the hydrological cycle. It is a requirement for snow cover, which affects the freshwater supply (Barnett et al., 2005) and the albedo of the Earth's surface (Hall and Qu, 2006). Therefore, it is important to understand which atmospheric conditions are driving snowfall. A prerequisite for snowfall is the atmospheric formation of ice crystals. Primary ice crystal formation can be initiated either by homogeneous or heterogeneous freezing, that is by cloud droplets freezing spontaneously below a temperature threshold of -38°C when the relative humidity with respect to ice is above 145 % (e.g. Murray et al., 2010) or by ice-nucleating particles (INPs) that promote freezing already at warmer temperatures and lower relative humidity (e.g. Kanji et al., 2017). Once primary ice crystals have formed, other atmospheric ice-related processes may occur, such as ice crys-

tal growth by water vapour deposition, riming, secondary ice formation, and aggregation (Fukuta and Takahashi, 1999), followed by deposition and accumulation at the surface, if crystals do not vanish before through sublimation in drier air (Nelson and Baker, 1996). These processes depend on microphysical and dynamical conditions that can lead to fully glaciated clouds (Costa et al., 2017), i.e. ice clouds. North of the Arctic Circle, warming probably leads to a change from ice clouds to more liquid clouds, whose radiative properties (Shupe and Intrieri, 2004) further accelerate Arctic warming (Tan and Storelvmo, 2019). Clouds containing ice crystals and generating snowfall can be studied for example with space-borne remote sensing techniques (e.g. Liu, 2008; Mülmenstädt et al., 2015; Kikuchi et al., 2017; Casella et al., 2017), which may be combined with ground observations of precipitation (Hanna et al., 2008). Another approach is air-

borne or ground-based remote sensing (e.g. Delanoë et al., 2013; Kneifel and Moisseev, 2020), sometimes combined with radiosondes (e.g. Silber et al., 2021) and morphological investigation of ice crystals collected in-cloud (e.g. Morrison et al., 2011; Ramelli et al., 2021; Pasquier et al., 2022). Further, radiosondes have been combined with morphological investigations of ice particles collected at ground level in several studies (Power et al., 1964; Justo and Weickmann, 1973; Seo et al., 2015).

Pinpointing the origin of even very low-intensity snowfall requires sensitive snowfall detection at ground level. The simultaneous capture of ice particle habits might enable to disentangle some of the microphysical and dynamical conditions, because ice particles encode atmospheric conditions and duration of growth they were exposed to. The shape, size, degree of riming, and eventually aggregation of ice particles encode the temperature and relative humidity with respect to ice (RH_{ice}) and liquid water (RH_{water}) at which they grew (Nakaya, 1954). According to the current version of Nakaya's habit diagram (Nakaya, 1954; Magono and Lee, 1966; Bailey and Hallett, 2009), rather large and eventually rimed crystals (including needles, stellar plates, two or three dimensional dendritic crystals, and graupel) are the result of supersaturation with respect to (liquid) water. Below water saturation compact and unrimed ice particles are to be expected (such as plates, columns, radiating plates, or bullet rosettes), which grow very slowly (Kobayashi, 1961). Riming occurs if supercooled water droplets of certain sizes are present (Mossop, 1978), and aggregation of snow particles can be significant at -17°C and warmer (Hobbs et al., 1974).

In the Arctic, observations of precipitating clouds were predominantly made at coastal or marine sites (e.g. Fridlind et al., 2012; Delanoë et al., 2013; Mioche et al., 2017; Gierens et al., 2020; Pasquier et al., 2022). Unlike coastal or marine sites, which are associated with high moisture levels, continental regions, such as northern Eurasia, including Northern Finland, are drier and receive less snowfall. There, cloud conditions are likely different from those at coastal or marine sites. Here, we used the approach of combining observations of ice particles at the ground with concurrent radiosonde profiles to identify from what type of clouds, ice or mixed phase, snowfall predominantly occurs in Northern Finland. Our focus is on identifying general patterns. Therefore, we analyse observations made throughout a total of 8 months distributed over two cold seasons.

2 Methodology

The experimental setup was located at the Arctic Space Centre of the Finnish Meteorological Institute (FMI) in Sodankylä, in Northern Finland (67.367°N , 26.629°E ; 179 m a.s.l. ; Fig. 1).

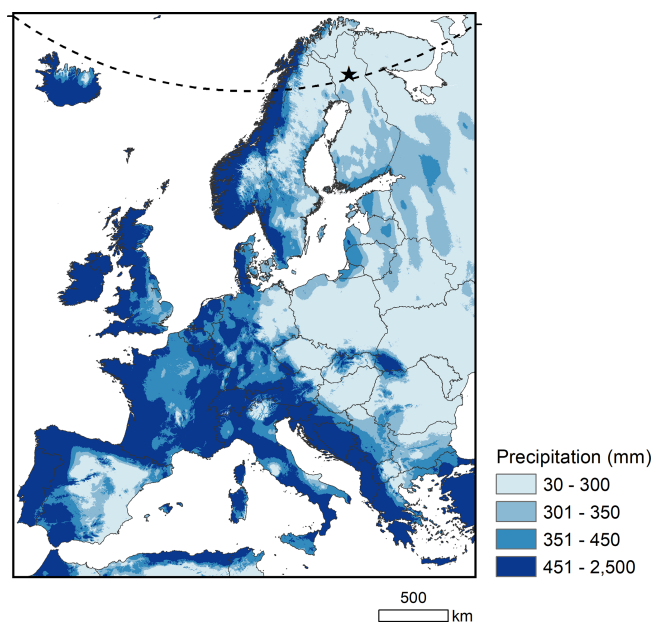


Figure 1. Overview of the geographical location of the experiment setup in Sodankylä, Finland (black star), which is just above the Arctic Circle (dashed line). The average 7-month total precipitation (in mm) for the colder months per year (January–April and October–December) in the period 1970–2000 are shown in the map derived from the monthly climate data from WorldClim (see also <https://www.worldclim.org/data/worldclim21.html>, last access: 31 January 2022, Fick and Hijmans, 2017).

2.1 Description of the site

The site is surrounded by a rural landscape consisting of coniferous forest and swamp (Hirsikko et al., 2014). It is situated just above the Arctic Circle. Due to the Gulf Stream, the climate and vegetation are subarctic, although the stratospheric meteorology is typically arctic (<https://fmiarc.fmi.fi/>, last access: 31 January 2022). The site is approximately 500 km from the Atlantic coast in the precipitation shadow of the mountain range along the north coast of Norway with a highest elevation around 1800 m.

In most Scandinavian countries, the west coast regions receive more precipitation during the 7 colder months (October–April), as compared to the mainland (Fig. 1). In large parts of Finland, including the location of our site, it does not exceed 300 mm. Within Europe, this is comparable to values in large parts of Northern Sweden, Western Russia, Eastern Europe, and Eastern Spain.

2.2 Snowfall measurements and ice particle image processing

A multi-angle snowflake camera (MASC, Particle Flux Analytics, USA; Garrett et al., 2012) took automatic photographs of precipitating ice particles from 28 February 2019 to 7 April 2020. During that time, the instrument was

continuously in operation, excluding the summer months (May–September), when snowfall is very rare at the site (see monthly weather parameters in Fig. A1) and during a short technical interruption between 11 and 25 October 2019. Slight modifications to the original MASC instrument (e.g. new emitter box, exchanging external plugging connectors and internal wiring, adding a box enclosing the isolating transformer and the computer) were performed before installation to make it run smoothly according to our needs. Since the main components of the instrument, including the cameras, have been kept in their original condition, we expect that our instrument provides the same results as an unmodified MASC. The instrument was installed at 2 m above-ground next to other field instruments that are part of the World Meteorological Organization (WMO) solid precipitation intercomparison experiment (SPICE; Nitu et al., 2018). Whenever an ice particle falls through the horizontal measurement cross-section of the instrument (roughly 10 cm²), three flashlights and cameras (Unibrain Firewire-800 cameras, image resolution: 5 MP, chip size: 8.8 mm × 6.6 mm, focal length: 12.5 mm), which have a 36° angle to each other and an identical focal point, are triggered synchronously. Ice particles are captured against a black background. The images are 2448 × 2048 pixels, resulting in an optic resolution of ~ 33 µm per pixel for particles in focus (Praz et al., 2017).

In the following, we only used images taken by the central camera. Generally, the ice particles that trigger the camera are captured in the middle of the resulting MASC images. MASC images on which the object or a part of it was outside the more or less central area of 1748 × 1430 pixels were rejected from further analysis. This selected area resulted from the original image by cropping 300 pixels from the top, 318 pixels from the bottom, and 350 pixels from both sides. Ice particles were automatically detected using a function provided by the open source computer vision library to identify the contours of bright (threshold at 20 out of 256 brightness values) continuous objects. We only considered objects with an area of least 500 continuous pixels, which is equivalent to a projected area of 0.54 mm², as ice particles suitable for further analysis. Smaller objects could generally not be classified according to criteria useful in the context of this study.

The area, position, maximal length, and maximal width of the projected objects larger than 0.54 mm² were retrieved from the image. A rectangle encompassing the ice particle was cut from the image and placed, while maintaining the optical size, in the centre of a completely black background of a fixed size, i.e. the size of the largest object observed during the overall course of this study. This processing of images made later visual inspection of the large number of mostly small ice particles more convenient. To ensure fast processing of the data, the files of the MASC images and the pre-defined selection images including extracted features were collected in an SQLite database.

Ice particle classification

Ice particle habits were visually classified. Ice particles with undefinable habits, such as broken-off pieces, were classified as non-specific crystals. Single ice particles with unequivocal shape were divided into nine ice crystal classes (see Fig. 2, i.e. needles, graupel, spatial dendrites, (planar) dendrites, stellar plates, plates, radiating plates, columns, and rosettes). Aggregated ice particles were classified as aggregates composed of specific or non-specific single crystals. If aggregates were composed of a single crystal class, we classified them as such. Only aggregates composed of needles, spatial dendrites, dendrites, stellar plates, radiating plates, or rosettes were observed (see Fig. A2). Each ice particle with an unequivocal shape was classified into rimed or unrimed. Unrimed ice particles corresponded to riming degrees of 0 and 1, and rimed particles to riming degrees of 2 to 5 according to Mosimann et al. (1994). Blurred or dark ice particle images were seen as invalid and classified as blurred or dark, respectively.

2.3 Vertical profiles and data processing

As part of the Global Climate Observing System Reference Upper-Air Network (GRUAN; WMO Integrated Global Observing System station identifier 0-20000-0-02836), vertical profiles of temperature, relative humidity with respect to liquid water, pressure, and wind speed and direction were measured at the site with Vaisala RS41 radiosondes (Jensen et al., 2016). Radiosondes were launched daily at 11:30 and 23:30 UTC by an automated sonde system (Vaisala AS41 Autosonde system) (Madonna et al., 2020). The radiosondes were launched on balloons with an ascent velocity of approximately 6 m s⁻¹ and data were recorded between ground level and an average of 28 km in altitude. According to the manufacturer, the humidity sensor of the radiosondes has a measurement uncertainty of 4 % and a response time of < 0.3 s for +20 °C (< 10 s for -40 °C), 6 m s⁻¹, and 1000 hPa. For temperature and pressure, the sensor measurement uncertainties above 100 hPa are 0.15 °C (with a response time < 0.5 s) and 0.4 hPa (<https://www.vaisala.com/sites/default/files/documents/RS41-SGP-Datasheet-B211444EN.pdf>, last access: 31 January 2022).

We used the Vaisala data product, which provides validated data and metadata. The vertical profiles of RH_{ice} were calculated using the saturation vapour pressure ITS90 formulation by Bob Hardy (<https://www.decatour.de/javascript/dew/resources/its90formulas.pdf>, last access: 31 January 2022) and averaged with a vertical resolution of 100 m.

2.4 Ground-based weather parameters

A ground-based weather station provided weather parameters in 10 min time intervals, including temperature, RH_{water}, wind measurements (at 22 m aboveground), air pressure, snow depth, cloudiness, horizontal visibility,

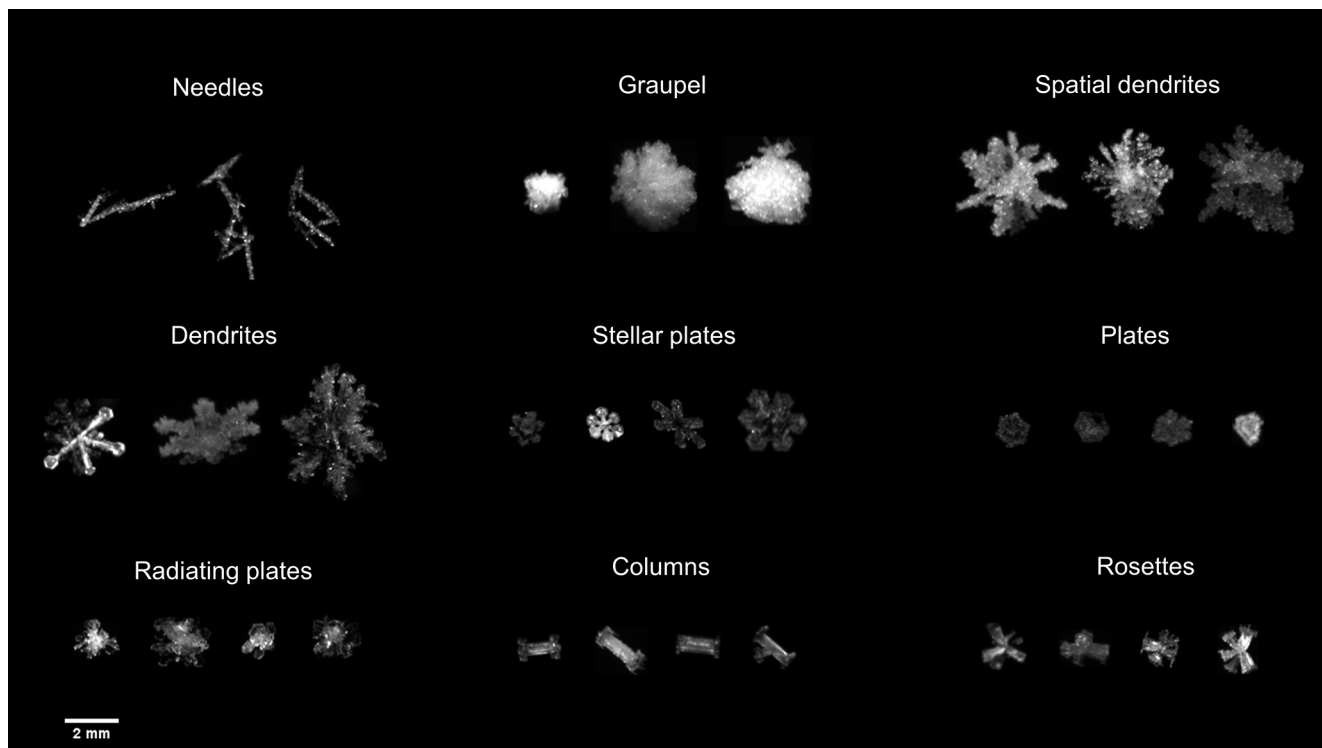


Figure 2. Some examples of single, specifiable ice particles captured by the MASC, and their shape. Needles were only captured as aggregates.

cloud base height, present weather, and precipitation determined by different instruments operated by the FMI (https://litdb.fmi.fi/luo0015_data.php, last access: 31 January 2022). The values for wind speed and direction were average values over 10 min intervals. The values for the other parameters were instantaneous values. In the WMO SPICE measurement field, precipitation was measured optically with a Parsivel² (OTT HydroMet, UK), which has a measurement accuracy of $\pm 20\%$ for solid precipitation between 0.001 and 1200 mm h^{-1} (<https://www.ott.com/products/meteorological-sensors-26/ott-parsivel2-laser-weather-sensor-2392/>, last access: 31 January 2022), and by weight with a Pluvio² (OTT HydroMet, UK), a weighing gauge that has an absolute accuracy of $\pm 0.05 \text{ mm}$ when averaged over 60 min (<https://www.ott.com/products/accessories-109/ott-pluvio2-weighing-rain-gauge-963/>, last access: 31 January 2022). As a note, both precipitation instruments obtained a reasonable agreement after reprocessing Parsivel² raw data (Boudala et al., 2014).

During the period of measurements (i.e. from 28 February 2019 to 7 April 2020, excluding May to September), local air temperature at the site was on average $-5.8 \text{ }^\circ\text{C}$, with minimum and maximum values of -34.4 and $+16.2 \text{ }^\circ\text{C}$, respectively. Average relative humidity was 87% and the average wind speed at 22 m aboveground (i.e. above tree top)

was 2.7 m s^{-1} , with a mean direction from Southwest–West-southwest (235°). Moreover, the ground was covered with snow with a mean snow depth of 70 cm and the total precipitation during the 8 months was 295 or 376 mm, depending on the measurement method (optical or by weight, respectively). This amount is not unusual when compared to the local climatology of the period 1970–2020, as shown in Fig. 1. The average locally measured height of the lowest cloud base (i.e. vertical visibility) was roughly 1.2 km, and the total cloudiness was determined to be on average 5 oktas. Details of the local monthly weather parameters from February 2019 to April 2020 can be found in Fig. A1.

3 Results and discussion

3.1 Snowfall events and coinciding vertical atmospheric profiles

We analysed a total of 468 radiosonde profiles that coincided with the MASC instrument being operational (i.e. 8 months of two winter seasons). Ice particles captured by the camera and recorded within the 15 min prior to each radiosonde launch were considered as coincident, although the path of the radiosondes is not exactly the same as that of the recorded ice particles. The time span of 15 min was chosen for practical reasons so that even during low precipitation intensity, several ice particles were recorded. Three coinciding obser-

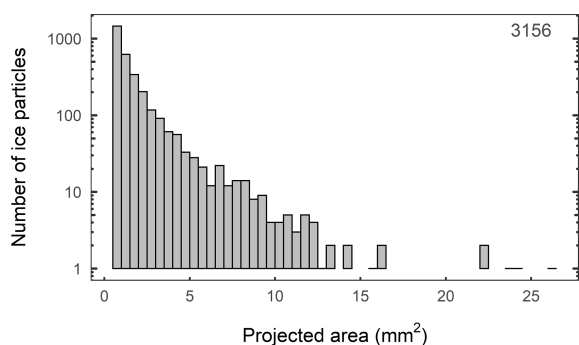


Figure 3. The number of analysed ice particles ($n = 3156$) by intervals of projected area (mm^2) roughly followed a power function. Analysed ice particles captured by the camera during the 15 min intervals prior to the radiosonde launches throughout the whole time span of interest (28 February 2019 to 7 April 2020) were considered.

variations were not included in our analysis, as it was either raining (10 February 2020 at 11:30 and 23:30 UTC) or snow was likely blowing off the ground during unusually strong winds (30 March 2019 at 11:30 UTC). A minimum of 10 images with ice particles of $\geq 0.54 \text{ mm}^2$ in size within these 15 min intervals before each radiosonde launch is the criterion for what we consider a snowfall event. Instances with less than 10 such images are considered “no-snowfall”.

A snowfall event therefore corresponds to a minimum precipitation intensity of about 0.01 mm h^{-1} (assuming spherical ice particles with 0.4 mm radius). The maximum and median number of images with objects larger than 0.54 mm^2 per snowfall event were 630 and 68, respectively (Fig. A3). Consequently, the median concentration of such objects in the precipitating air column would have been around 76 m^{-3} , assuming an average fall speed of 1 m s^{-1} (i.e. Locatelli and Hobbs, 1974). A total of 7401 objects were detected on MASC images coinciding with the radiosonde profiles. More than half of these objects (57 %) were blurred, dark, or not entirely visible on the pre-defined image selection. The remaining (3156) were analysed for their size, and visually for ice particle class, riming degree, and aggregation. These analysed objects had mean and median projected areas of 1.8 and 1.1 mm^2 , respectively (Fig. 3).

Out of 468 radiosonde profiles coinciding with the MASC instrument being operational, 62 were classified as snowfall events and the rest were considered no-snowfall (Fig. A3). For each 15 min event, ground-based meteorological parameters were calculated from two weighted 10 min resolved data points and summarised (Fig. 4). During snowfall, the median and maximum wind speeds at 22 m aboveground were 3.0 and 5.6 m s^{-1} , respectively, and the median air temperature was $-3.1 \text{ }^\circ\text{C}$. This is consistent with the results of Kochendorfer et al. (2017) for precipitation periods in the winter seasons of the time period 2013–2015. Moreover, during snowfall events, the median wind at 22 m

aboveground was from the East-Southeast (110°), although at greater altitude (2.7 km) it was mostly from West to Southwest (Fig. A4) and the median precipitation rate was relatively low with 0.20 mm h^{-1} , as determined optically with the Parsivel². Somewhat higher values were measured with the Pluvio² (0.32 mm h^{-1}). During snowfall, the horizontal visibility was on average 2693 m , the average base height (or vertical visibility) of the lowest cloud was 285 m , the sky was fully cloud-covered (cloud cover = 8), and it was slightly snowing (code of “present weather” = 71). This suggests that snowfall was produced by probably stratiform clouds almost touching ground level. For events without snowfall, the median precipitation rate was zero, regardless of the measurement technique. The comparison of various other meteorological parameters between events with and without snowfall showed that some parameters differed in terms of range and median (i.e. RH_{water} , pressure, wind direction, horizontal visibility, first cloud base height, cloudiness, and present weather). Other parameters were relatively similar during snowfall as during no-snowfall events (i.e. air temperature, snow depths, and wind speed).

The RH_{ice} of the profiles during snowfall showed a consistent pattern (Fig. 5a). RH_{ice} was close to saturation at ground, increased slightly within the first few hundred metres, and remained above and close to 100 % RH_{ice} in the lower troposphere up to roughly 3 km . Above this altitude, RH_{ice} values were more scattered among the profiles, with some profiles showing supersaturation with respect to ice up to 10 km . Consistently during snowfall, RH_{water} showed values close to 100 % from ground to a few hundreds of metres, followed by a slight decrease with increasing altitude up to 3 km , and a stronger variation above this altitude (Fig. A5a). RH_{ice} and RH_{water} of the profiles not associated with solid precipitation showed no such consistent pattern (Figs. 5b and A5b).

3.2 Necessary or sufficient RH_{ice} conditions for snowfall

To test whether RH_{ice} close to saturation throughout the lower $\sim 3 \text{ km}$ of the atmosphere is a necessary or sufficient condition for snowfall at the site, we evaluated a range of RH_{ice} values and altitude ranges using different metrics, including accuracy (ACC), critical success index (CSI), and Heidke skill score (HSS), as shown in Fig. 6. An overview of the indices can be found in the Appendix A (Table A1). All three indices have an optimal value of 1, favour hits, and penalise both misses and false alarms. Based on the results of three indices, the best scores were obtained for the following combination of values (from hereon; criterion): running mean $\text{RH}_{\text{ice}} \geq 97 \%$ throughout the lower 2.7 km of the atmosphere. Choosing different values for running mean RH_{ice} and altitude reduced the overall accuracy of the prediction of snowfall events, although a running mean $\text{RH}_{\text{ice}} \geq 96 \%$ throughout the lower 2.7 km of the atmosphere also yielded a very good score.

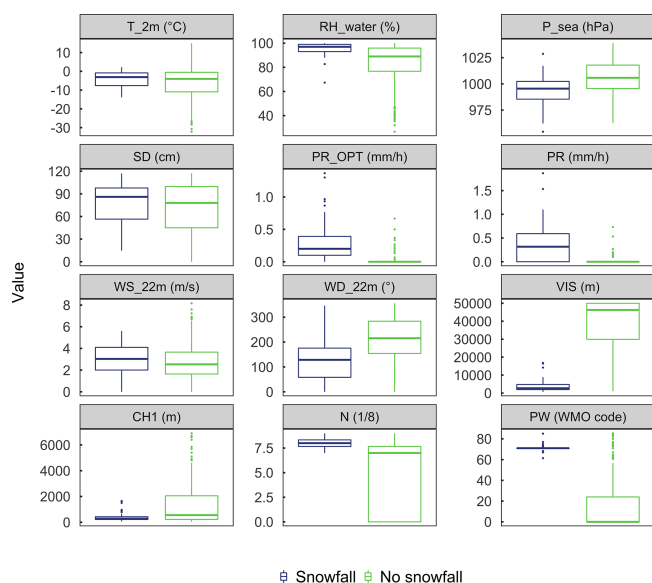


Figure 4. Boxplots (i.e. median: thick line, interquartile range: box, minima and maxima: whiskers, outliers: dots) of weather parameters measured at the site coinciding with radiosonde profiles during events considered as snowfall ($n = 62$, blue) and as no-snowfall ($n = 406$, green). The following parameters are shown from the upper left to the bottom right: ambient air temperature at 2 m above-ground (T_{2m} in $^{\circ}\text{C}$), the relative humidity with respect to water (RH_{water} in %), the pressure at sea level (P_{sea} in hPa), the snow depth (SD in cm), the precipitation rate measured optically (PR_{OPT} in mm h^{-1}) and by weight (PR mm h^{-1}), the wind speed at 22 m aboveground (WS_{22m} in m s^{-1}), the wind direction at 22 m aboveground (WD_{22m} in $^{\circ}$), the horizontal visibility (VIS in m), the height of the lowest cloud base (CH1 in m), the total cloudiness (N , a number between 1 (cloud-free) and 8 (cloud-covered)), and the present weather (PW using the WMO Code 4680).

Of the total of 468 radiosonde profiles, 64 met the criterion of a running mean $\text{RH}_{\text{ice}} \geq 97\%$ throughout the lower 2.7 km (Fig. 7). In 81 % of them (52 of 64) snowfall was observed (*hits*). In 10 cases the criterion was not met but snowfall was observed (*misses*). In 12 cases the criterion was met but no snowfall was observed (*false alarms*), and in 394 cases the criterion was not met and no snowfall was observed (*correct negatives*). In other words, these specific thresholds of RH_{ice} and altitude correctly predicted 84 % (52 of 62) and 97 % (394 of 406) of the cases with and without snowfall, respectively. Although the criterion of a running mean $\text{RH}_{\text{ice}} \geq 97\%$ throughout the lower 2.7 km was neither absolutely necessary nor sufficient for snowfall to occur, it still separates the majority of snowfall events from no-snowfall events and vice versa.

3.3 Snowfall rate and type

In this section, we will focus on the 52 snowfall events coinciding with a running mean $\text{RH}_{\text{ice}} \geq 97\%$ throughout the

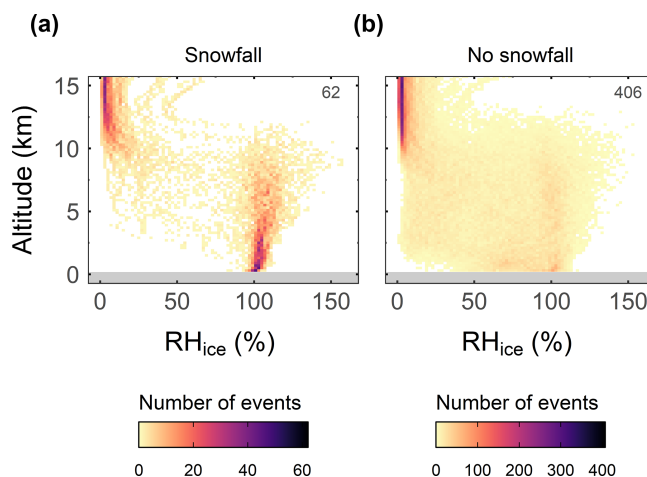


Figure 5. Relative humidity with respect to ice (RH_{ice}) within intervals of 200 m height and 2 % RH_{ice} retrieved from the radiosonde profiles during (a) snowfall and (b) no-snowfall events. The total number of events for each group is provided in the upper right corner of each panel. The colour scale ranges from zero to the total number of events for each group, so the colour scale for each panel is different.

lower 2.7 km (i.e. *hits*, Fig. 7a), which seem to represent the predominant condition in which snowfall occurs in Northern Finland (dates of the events are listed in Table A2). These events were associated with optically measured median and maximum snowfall rates of 0.23 and 1.37 mm h^{-1} , respectively, as derived from the Parsivel² precipitation measurements. Only three of them were associated with snowfall rates $< 0.05 \text{ mm h}^{-1}$ (Fig. A7 top left panel). In general, the snowfall rates for the 52 snowfall events we now consider were significantly higher than for the other cases (i.e. *misses*, *false alarms*, and *correct negatives*), as shown in Fig. A7.

Excluding the invalid objects (i.e. blurred or dark, Fig. A2), a total of 2853 analysed ice particles were captured during these 52 snowfall events. They had a median projected area of around 1.1 mm^2 (not shown) and a very similar size distribution to that of all events, which are shown in Fig. 3. Many of these objects on the visually inspected images had undefinable habits (Fig. A2). Only 29 % of them (827 of 2835) could unequivocally be classified by their habit. Nine different unequivocal crystal habits were observed (Fig. 2). The majority of them were single ice crystals and unrimed (Fig. 8). Most ice crystals had habits that form below liquid water saturation (i.e. single plates, columns, radiating plates, rosettes, or their aggregates). Notably, the shapes that grow below the liquid water saturation were often unrimed (not shown). The most common habit of the classifiable ice particles was radiating plates, with a share of 54 % (447 of 827).

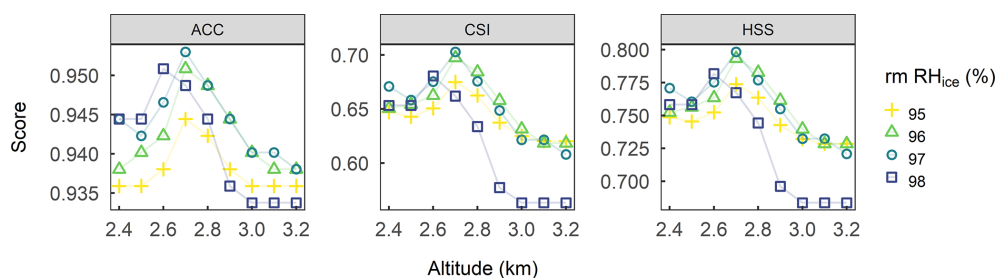


Figure 6. Scores to assess the prediction of snowfall using the running mean RH_{ice} values and altitude ranges were best for running mean $\text{RH}_{\text{ice}} \geq 97\%$ throughout the lower 2.7 km aboveground. A set of different lower threshold values was investigated ranging for a running mean RH_{ice} from $\geq 95\%$ to $\geq 98\%$ throughout altitude ranges from ground-level to between 2.4 and 3.2 km aboveground. Running means in RH_{ice} were calculated of five consecutive 100 m layers and the running mean was allocated to the lowest of the five layers. The following scores are shown: accuracy (ACC), critical success index (CSI), and Heidke skill score (HSS). See Table A1 for more information on the metrics.

3.4 Properties of ice crystals and air masses related to maximum RH_{water} along the profile

We grouped the 52 snowfall events under consideration according to their maximum running mean RH_{water} along the radiosonde profiles into three similarly large sub-groups: $< 98\%$, $\geq 98\%$ and $< 99\%$, and $\geq 99\%$, as shown in Fig. 9a–c. For each sub-group, we determined the corresponding ice particle size distribution and ice particle classes (Fig. 9d–i). Overall, 14 of 52 events (27 %) reached a maximum running mean RH_{water} along the profile between 99 % and 100 % (Fig. 9c). These events coincided with ice particles that were (1) larger (Fig. 9f), (2) more often rimed and aggregated, and (3) more often associated with habits that grow above the water saturation line (i.e. needles, graupel, spatial dendrites, dendrites, and stellar plates; Fig. 9i) as compared to those events (38 of 52) that did not reach a maximum running mean RH_{water} of 99 % (Fig. 9a, b, d, e, g, h). Hence, only around one-quarter of all precipitating clouds seem to have been mixed phase and the rest were probably fully glaciated. The lowest proportion of riming and aggregation was found for events for which the maximum running mean RH_{water} did not exceed 98 % (Fig. 9a, d, g). These results suggest that the humidity measurements by the radiosondes during our measurement campaign and in the lower 3 km of the atmosphere were more accurate near saturation with respect to water than the 4 % promised by the manufacturer, at least when averaged over 500 m.

Most air masses associated with the 52 snowfall events tended to come from a southerly to westerly direction and crossed marine areas shortly before arriving at the site (Figs. 10 and A4b), which suggests that the Baltic Sea, the Norwegian Sea, and the North Sea were the major sources of moisture for snowfall in the observed cases. The few air masses that did not pass over marine areas recently, but crossed Russia and Eastern Europe, were associated with maximum running mean RH_{water} below 99 %.

3.5 Likely underlying ice formation processes

To determine whether heterogeneous or homogeneous freezing might have triggered the initial ice formation during the considered 52 snowfall events (coinciding with running mean $\text{RH}_{\text{ice}} \geq 97\%$ throughout the lower 2.7 km), we extracted from the radiosonde profiles the likely cloud top temperature, which is the coldest temperature at which initial ice might have formed. Since a higher level cloud could seed a lower level cloud (e.g. Vassel et al., 2019; Ramelli et al., 2021; Proske et al., 2021), we determined the cloud top of the highest possible seeding cloud. Here we define successive values of the running mean from five consecutive 100 m averaged RH_{ice} with increasing height $\geq 100\%$ as a cloud. For each cloud, we determined the cloud base height, cloud top height, and cloud top temperature. The cloud top temperature is the minimum temperature between the cloud base and cloud top measured by the radiosonde temperature sensor. When two clouds were on top of each other, we further determined the distance between the cloud top height of the lower-level cloud and the cloud base height of the upper-level cloud. If this distance was below a certain threshold (0.2, 0.5, or 1 km), we considered the two clouds as potential seeder–feeder clouds. If there were more than two clouds on top of each other, we determined the highest seeder cloud for which the distance threshold with increasing height holds. Finally, we determined the cloud top temperature of the highest seeder cloud for each case (also described as cloud top temperature from here on). Hence, we take into account that up to a certain (vertical) distance between clouds, ice crystals from the upper cloud (seeder) could fall through the unsaturated layer without fully sublimating, thus seeding the lower cloud (feeder). It is noteworthy that our threshold for seeder–feeder consideration is based only on the distance between clouds. However, whether an ice crystal fully sublimates between two clouds depends on several factors such as the crystal’s size and habit when entering unsaturated conditions or by the degree of unsaturated air. In the absence of

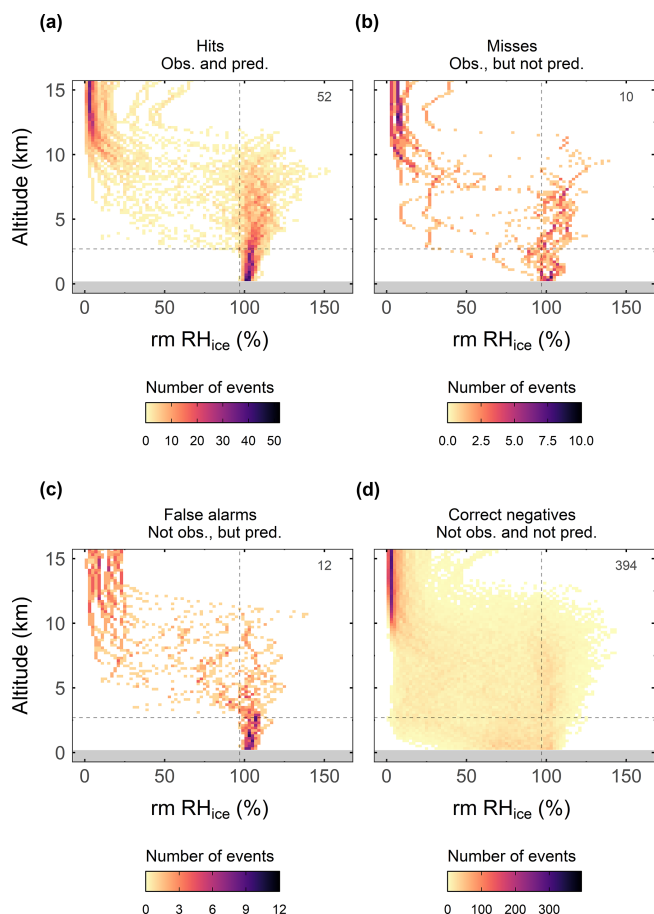


Figure 7. Observed values of running mean RH_{ice} binned in 200 m intervals and 2 % steps of RH_{ice} for (a) hits, (b) misses, (c) false alarms, and (d) correct negatives. Snowfall was predicted for cases when running mean RH_{ice} measured along the radiosonde profile was $\geq 97\%$ (vertical dashed line) throughout the lower 2.7 km (horizontal dashed line) of the atmosphere. The total number of events per group is shown in the upper right corner of each panel. The colour scale ranges from zero to the total number of events for each group, so the colour scale for each panel is different.

in-cloud crystal information, we cannot make detailed calculations. To compensate for this uncertainty, we show cloud top temperature estimates for three different distance thresholds. Note that we do not distinguish between cases with a single cloud and those with seeder–feeder clouds. Depending on the assumed distance threshold between potential seeder and feeder clouds, between 38 % and 58 % of the cloud tops were colder than -38°C (Fig. 11a). Here, freezing would have been initiated via homogeneous freezing (Murray et al., 2010). However, between 42 % and 62 % of the cloud tops may have had temperatures warmer than -38°C . In these cases, ice formation would have been initiated via heterogeneous freezing. Since RH_{ice} and RH_{water} along the profiles were often $< 130\%$ and $< 100\%$, respectively (i.e. Figs. 5a and 9a–c), we speculate that initial ice formed via pore con-

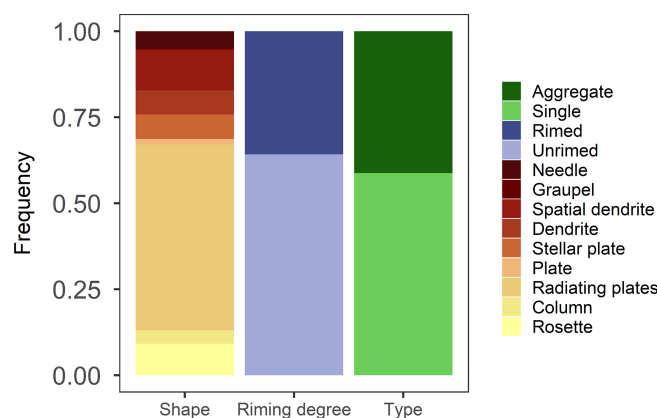


Figure 8. Analysis of (827) unequivocal ice particles that were captured during the 52 snowfall events coinciding with a running mean $RH_{ice} \geq 97\%$ throughout the lower 2.7 km. Frequency with respect to shape (i.e. as shown in Fig. 2), riming degree (i.e. unrimed or rimed), and type (i.e. single or aggregate) are shown.

densation and freezing onto mineral dust, biogenic particles, or other INPs (Kanji and Abbatt, 2006; David et al., 2019).

We may estimate whether enough INPs were present to explain the number of ice particles observed by using the empirical parameterisation by Schneider et al. (2021):

$$INP(T) = 0.1 \cdot \exp(a_1 \cdot T_{amb} + a_2) \cdot \exp(b_1 \cdot T + b_2) \text{stdL}^{-1}, \quad (1)$$

where $INP(T)$ is the number concentration of INPs (in stdL^{-1} : per standard litre) active at temperature T (in K), T_{amb} is the ambient air temperature at ground level (in K), and a_1 , a_2 , b_1 , and b_2 are empirically fitted parameters ($a_1 = 0.074 \text{ K}^{-1}$, $a_2 = -18$, $b_1 = -0.504 \text{ K}^{-1}$, $b_2 = 127$). We used daily averaged local temperatures for T_{amb} to calculate the INP number concentration active at cloud top temperatures. Considering the cases with cloud top temperatures warmer than -38°C , the median INP concentrations were 15, 28, and 410 m^{-3} , respectively, depending on the assumed distance between potential seeder and feeder clouds (Fig. 11b). Since the necessary aerosol properties were not measured at the site at the time period of interest, it was not possible to use other existing INP parameterisations (e.g. DeMott et al., 2015; Ullrich et al., 2017) to qualitatively evaluate the associated uncertainty. However, the here predicted INP concentrations are similar to the range of observed long-term median INP concentrations active between -20°C (60 m^{-3}) and -30°C (690 m^{-3}) in condensation freezing mode (i.e. $RH_{water} = 101\%$) at an Arctic site in Svalbard (474 m a.s.l.; Schrod et al., 2020).

Finally, for cases with cloud top temperatures warmer than -38°C , we estimate the likely ice multiplication factor, which is the observed snowflake concentration divided by the estimated INP concentration (Fig. 12). For a distance between potential seeder and feeder clouds of 1 km the median

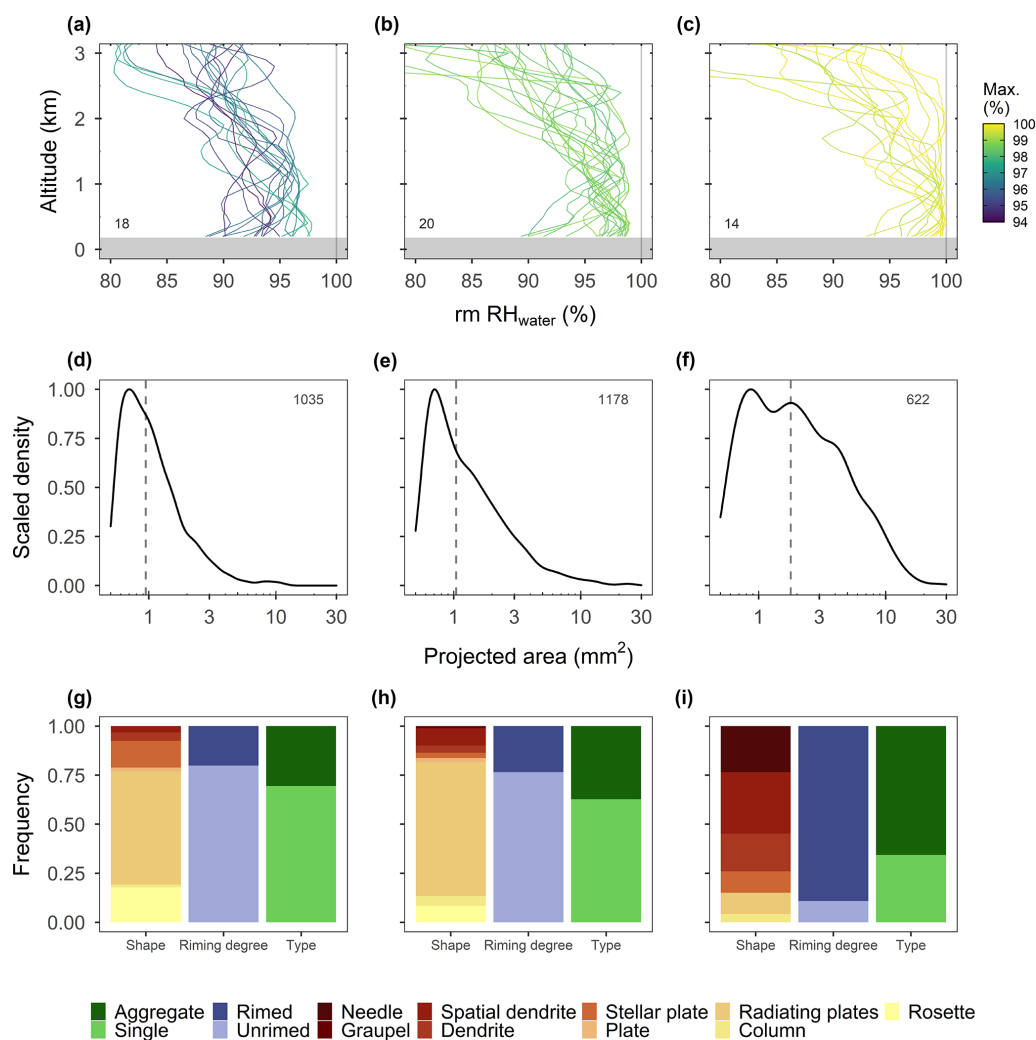


Figure 9. (a, b, c) Running mean RH_{water} profiles coinciding with snowfall and running mean $\text{RH}_{\text{ice}} \geq 97\%$ throughout the lower 2.7 km (52 events) grouped by the maximum running mean RH_{water} . The maximum running mean RH_{water} along the altitude profile is shown in colour. (a) Profiles with a maximum running mean $\text{RH}_{\text{water}} < 98\%$. (b) Profiles with a maximum running mean $\text{RH}_{\text{water}} \geq 98\%$ and $< 99\%$. (c) Profiles with a maximum running mean $\text{RH}_{\text{water}} \geq 99\%$. For each panel, the number of profiles is indicated in the left bottom corner. (d, e, f) The scaled density of ice particles by projected area (mm^2). All the analysed ice particles of the profiles in the above-lying panel were considered. The dashed vertical line indicates the median area. The number of analysed ice particles is indicated by the number provided in the upper right corner. During the 52 snowfall events, a total of 2835 ice particles were analysed. (g, h, i) Same as Fig. 8, but considering only the specifiable ice particles coinciding with the events of the above-lying panels.

ice multiplication factor was less than 1, indicating that the median number of estimated INPs would have been sufficient to generate the median number of observed ice particles. For smaller thresholds (0.2 and 0.5 km), median ice multiplication factors of 1.8 and 3 would need to be invoked to explain the median observations. Also, we find higher median ice multiplication factors for cases that are mixed-phase clouds compared to those that are likely ice clouds. A closer look at the individual events shows that in 36 % to 66 % of the cases, the ice multiplication factor was higher than 1, depending on the threshold to determine the highest seeder cloud. Therefore, secondary ice formation processes were probably active

in one- to two-thirds of the cases (where ice formation was initiated through heterogeneous freezing). Highest ice multiplication factors were found for cloud top temperatures between -3 and -10°C , ranging from 10 to 1000. This could be indicative of rime splintering (Hallett and Mossop, 1974). For temperatures between -10 and -20°C , the multiplication factors reached values up to 10, which could be indicative of ice multiplication from ice–ice collision of dendrites followed by breakup (Vardiman, 1978; Mignani et al., 2019). This secondary ice mechanism was shown to be linked to the collision force and the riming degree, with a number of observed fragments per collision below 1 for unrimed den-

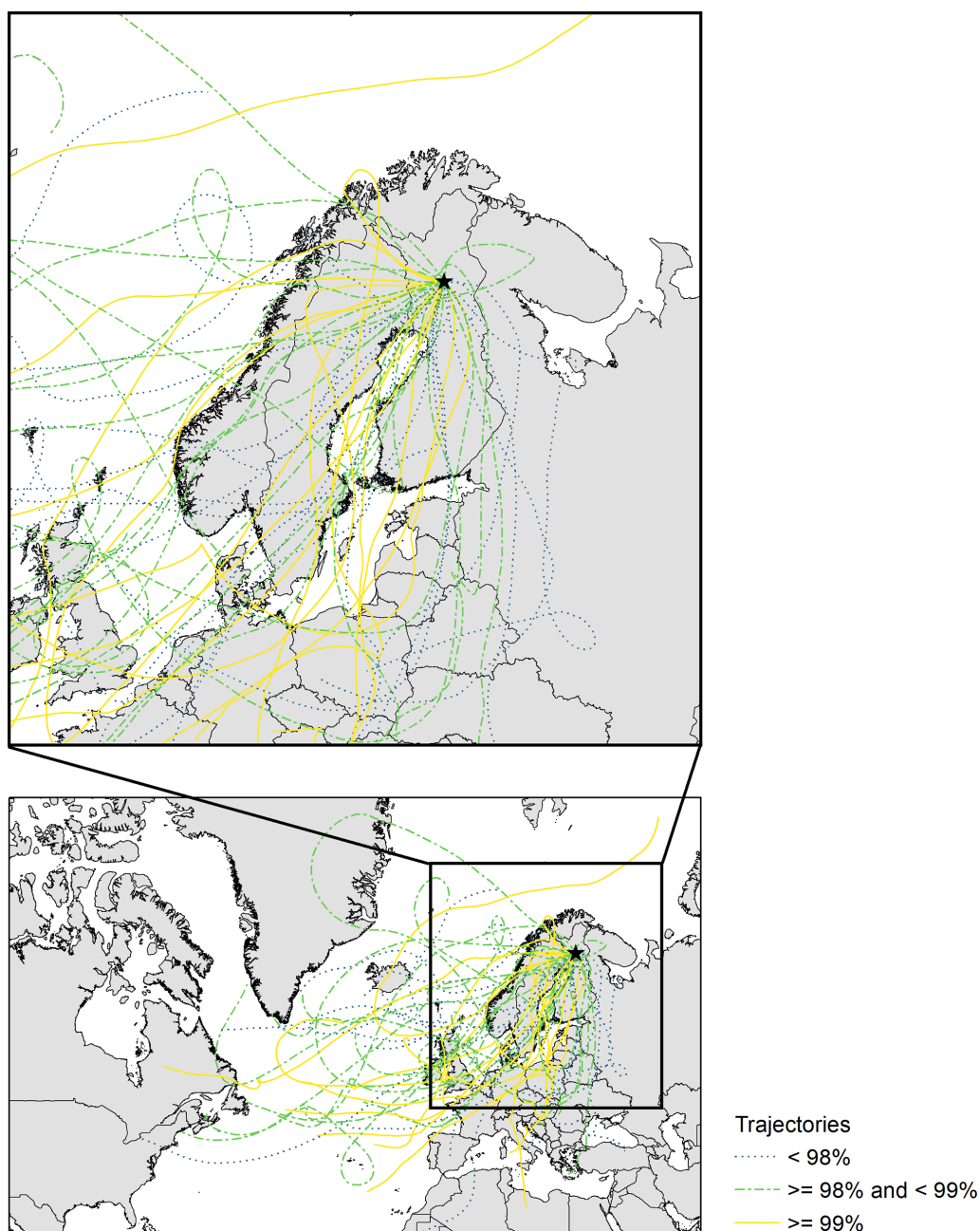


Figure 10. Five-day backward trajectories (lines) arriving at the measurement site in Sodankylä, Finland (black star) at 2.7 km aboveground at full hour (i.e. 11:00 or 23:00 UTC) for each of the 52 snowfall events. The group of maximum running mean RH_{water} (as in Fig. 9) is shown in colour (< 98 %, dotted blue; \geq 98 % and < 99 %, dashed green; < 99 % continuous yellow). An inset map is shown in the upper panel. The trajectories were calculated using the NOAA’s Hybrid Single-Particle Lagrangian Integrated Trajectory (HYSPLIT) model. One trajectory per event was computed using the GDAS 1° meteorology dataset and the “model vertical velocity” vertical motion method.

drites and below 8 for lightly rimed dendrites (Vardiman, 1978; Phillips et al., 2017). Note that, we saw some broken-off branches of dendrites (Fig. A2), suggesting at least occasional ice–ice collision followed by breakup was active. Other ice multiplication processes exist (Korolev and Leisner, 2020) and could be active. For cloud top temperatures below -20°C , sufficient INPs were likely active to explain

the observed number of snowflakes. In general, the ice multiplication factors in relation to the temperatures observed are consistent with previous observations (see Fig. 14 in Wieder et al., 2022) and show that ice multiplication played a role in the vast majority of the cases associated with cloud top temperatures $\geq -15^{\circ}\text{C}$.

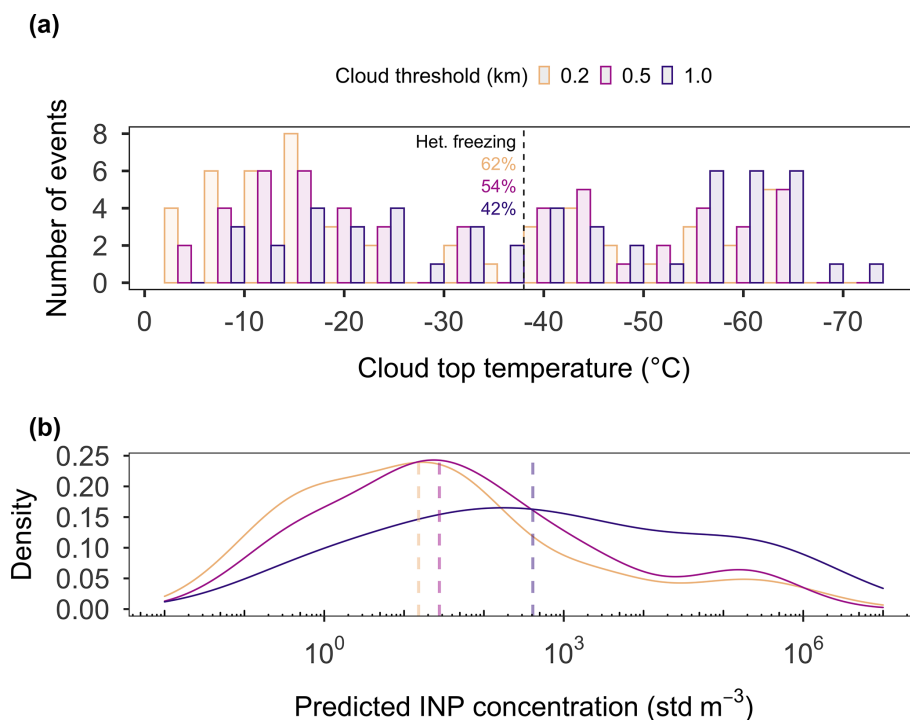


Figure 11. (a) The cloud top temperatures of the highest possible seeder–feeder cloud in 4°C intervals of the 52 events coinciding with running mean $\text{RH}_{\text{ice}} \geq 97\%$ throughout the lower 2.7 km. The cloud top temperature was derived using the radiosonde measurements which is described in detail in Sect. 3.5. We used the following thresholds for the distance between clouds to be considered as seeder–feeder clouds: ≤ 0.2 km (orange), ≤ 0.5 km (pink), and ≤ 1.0 km (purple). The fraction of events with cloud top temperatures above -38°C is given in percent next to the dashed line. This is an estimation of the fraction of events for which the first ice crystals were likely formed via heterogeneous freezing. (b) Density of the INP concentration for the fraction of events with cloud top temperatures above -38°C , using the different thresholds to account for seeder–feeder clouds (in colour) as shown in panel (a). The respective median concentrations are shown by the dashed lines.

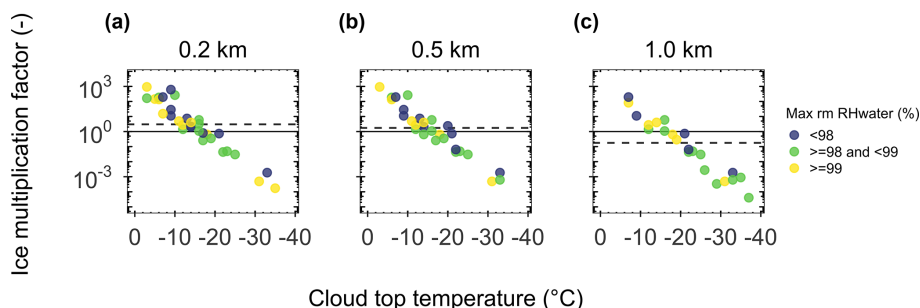


Figure 12. The ice multiplication factor versus cloud top temperature ($^\circ\text{C}$) for each of the 52 snowfall events (coinciding with running mean $\text{RH}_{\text{ice}} \geq 97\%$ throughout the lower 2.7 km) that were associated with cloud top temperatures warmer than -38°C determining the highest possible seeder–feeder cloud using a distance threshold of (a) 0.2 km, (b) 0.5 km, and (c) 1.0 km. The colours are indicative of the associated maximum running mean RH_{water} ($< 98\%$, blue; $\geq 98\%$ and $< 99\%$, green; $\geq 99\%$, yellow). The median ice multiplication factor is shown by the dashed line. The solid line is drawn at an ice multiplication factor of 1.

4 Conclusions

Overall, about 70% of all classifiable ice crystals observed during the 52 snowfall events (i.e. events that had a minimum of 10 images with ice particles of $\geq 0.54 \text{ mm}^2$ in size within 15 min intervals) that were correctly predicted using our ba-

sic RH_{ice} criteria (i.e. running mean $\text{RH}_{\text{ice}} \geq 97\%$ throughout the lower 2.7 km) in Northern Finland had habits that form below the water saturation. In a similar proportion of radiosonde profiles, the running mean RH_{water} did not reach values $\geq 99\%$. This suggests that snowfall in this region was derived from ice clouds in nearly three-quarters of the cases.

As ice particles grow very slowly in such conditions, the lower atmosphere can not be much below saturation with respect to ice for snowfall to occur. Otherwise, the small, often unrimed ice particles would not reach the surface before completely sublimating. These precipitating clouds are probably stratiform clouds that extend from close to the ground to at least 2.7 km altitude. At that altitude, the air masses arrived mostly from West and Southwest. Probably, the Baltic Sea, the Norwegian Sea, and the North Sea were the major source of moisture generating snowfall in Northern Finland. Due to orographic lifting at the coastal mountain range, North Atlantic air masses might already have lost much of their initial moisture content when arriving in Northern Finland.

In a warmer climate, the partitioning of ice particles and liquid cloud droplets in Arctic clouds may shift in favour of liquid droplets. Therefore, a greater proportion of mixed-phase clouds than currently observed can be expected. This could lead to snowfall events with a greater proportion of larger snowflakes, rimed ice particles, and such crystal habits that grow above water saturation compared to today. Rime splintering and other secondary ice formation processes requiring liquid droplets could become more frequent, which would likely increase the ice multiplication factor. Such cloud microphysical changes depend on the availability of INPs, which are currently responsible for perhaps half of the initial ice formation during snowfall in Sodankylä. In the future, the effects of eventual changes in predominant cloud phase should be further investigated through studying cloud and precipitation microphysics as well as cloud radiation properties to better understand potential feedback mechanisms between climate change and cloud properties.

Appendix A

Table A1. Details of scores that compare observed versus predicted events. The scores are calculated with the help of hits (H), misses (M), false alarms (F), correct negatives (C), and the total number of events (total).

Abbreviation	Name	Formula	Range	Ideal value	Reference
ACC	Accuracy	$\frac{H + C}{\text{Total}}$	(A1) (0, 1)	1	Bennett et al. (2013)
CSI	Critical success index	$\frac{H}{H + M + F}$	(A2) (0, 1)	1	Bennett et al. (2013)
HSS	Heidke skill score	$2 \frac{H \cdot C - F \cdot M}{(H + M)(M + C) + (H + F)(F + C)}$	(A3) (0, 1)	1	Hyvärinen (2014)

Table A2. Date and time for each of the 52 snowfall events coinciding with running mean $\text{RH}_{\text{ice}} \geq 97\%$ throughout the lower 2.7 km.

Number	Date and time (UTC)	Number	Date and time (UTC)
1	8 March 2019 23:30	27	16 December 2019 11:30
2	9 March 2019 11:30	28	16 December 2019 23:30
3	9 March 2019 23:30	29	17 December 2019 11:30
4	16 March 2019 23:30	30	21 December 2019 11:30
5	17 March 2019 11:30	31	21 December 2019 23:30
6	17 March 2019 23:30	32	29 December 2019 23:30
7	18 March 2019 11:30	33	30 December 2019 11:30
8	18 March 2019 23:30	34	16 January 2020 23:30
9	21 March 2019 23:30	35	18 January 2020 23:30
10	29 March 2019 11:30	36	28 January 2020 23:30
11	4 April 2019 11:30	37	29 January 2020 11:30
12	30 April 2019 23:30	38	29 January 2020 23:30
13	25 October 2019 23:30	39	31 January 2020 11:30
14	26 October 2019 11:30	40	1 February 2020 11:30
15	30 October 2019 23:30	41	1 February 2020 23:30
16	2 November 2019 11:30	42	2 February 2020 11:30
17	2 November 2019 23:30	43	7 February 2020 11:30
18	11 November 2019 23:30	44	11 February 2020 11:30
19	13 November 2019 23:30	45	15 February 2020 11:30
20	14 November 2019 11:30	46	21 February 2020 11:30
21	28 November 2019 11:30	47	8 March 2020 23:30
22	28 November 2019 23:30	48	10 March 2020 11:30
23	9 December 2019 11:30	49	11 March 2020 11:30
24	11 December 2019 11:30	50	12 March 2020 23:30
25	13 December 2019 11:30	51	15 March 2020 23:30
26	15 December 2019 23:30	52	31 March 2020 11:30

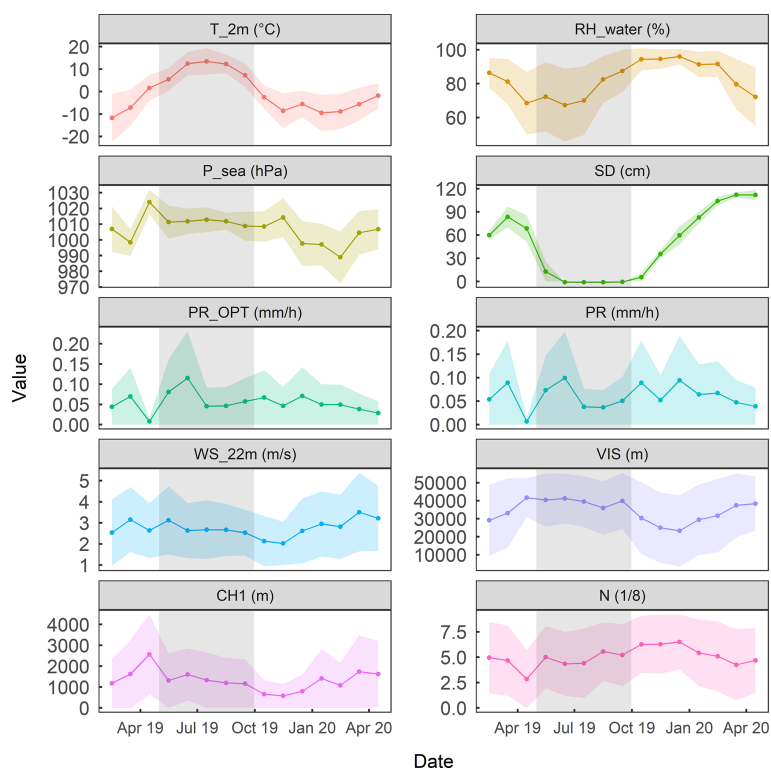


Figure A1. Time series of monthly weather parameters (means: dots and connecting lines, and standard deviations: ribbons) at the measurement site in Sodankylä from February 2019 to April 2020. The following variables are shown (from the upper left to the bottom right): ambient air temperature at 2 m aboveground (T_{2m} in $^{\circ}\text{C}$), relative humidity with respect to water (RH_{water} in %), pressure at sea level (P_{sea} in hPa), snow depth (SD in cm), precipitation rate measured optically (PR_{OPT} in mm h^{-1}) and by weight (PR mm h^{-1}), wind speed (WS at 22 m aboveground in m s^{-1}), horizontal visibility (VIS in m), height of the lowest cloud base (CH1 in m), and total cloudiness (N, a value between 1 and 8). The grey areas mark the months, from May to September, that were excluded from our analysis.

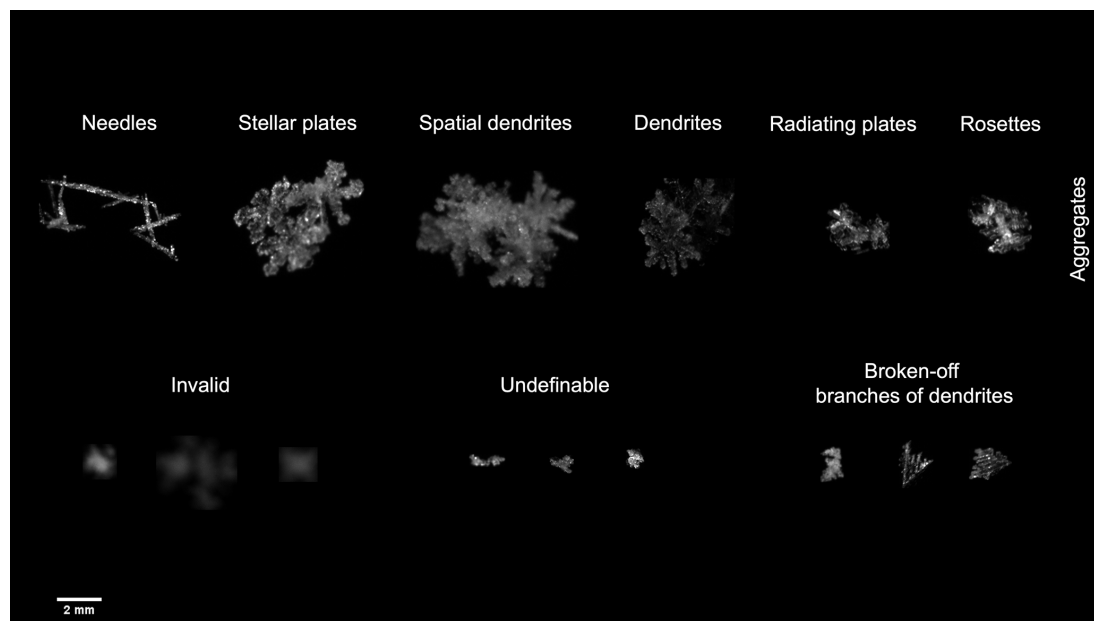


Figure A2. Similar to Fig. 2, but with further examples of images captured by the MASC. Aggregates of specifiable ice particle shapes are arranged in the top row. Invalid and undefinable particle shapes and broken-off branches of dendrites are shown in the bottom row.

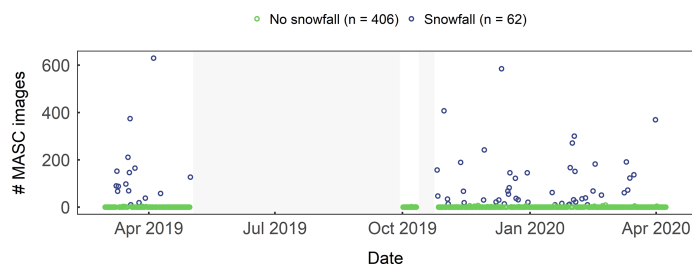


Figure A3. The number of images with objects larger than 0.54 mm^2 captured by the operational MASC instrument during coinciding radiosonde profiles from 28 February 2019 to 7 April 2020. Radiosondes were launched twice a day, at 11:30 and 23:30 UTC. Images considered were captured within a time span of 15 min before each radiosonde launch. Cases (i.e. 15 min time intervals) with 10 or more of such images are classified as snowfall events ($n = 62$, blue dots). The others are classified as no-snowfall events ($n = 406$, green dots). No data (grey area) were collected in the summer months (May to September) and during a technical interruption between 11 and 25 October 2019.

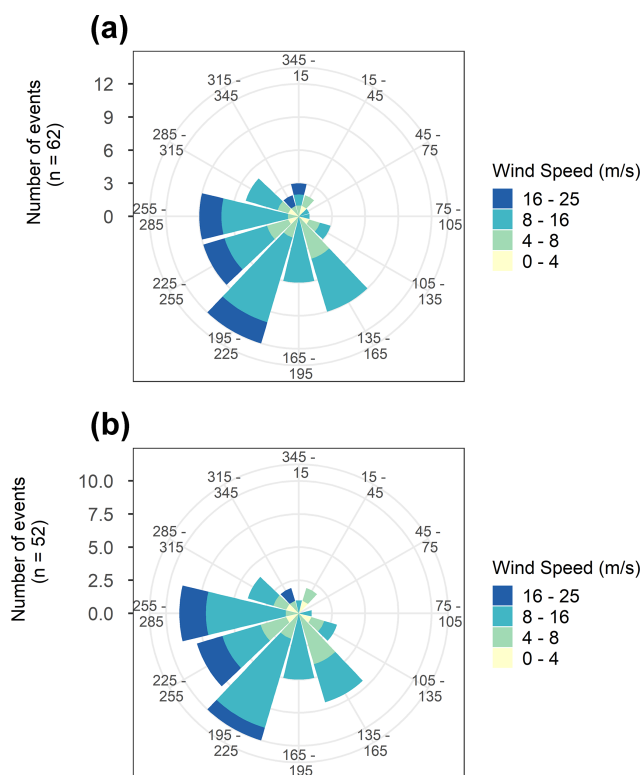


Figure A4. Wind direction measured by the radiosondes at 2.7 km of (a) the 62 snowfall events and (b) the 52 snowfall events coinciding with running mean $\text{RH}_{\text{ice}} \geq 97\%$ throughout the lower 2.7 km (see Sect. 3.2 for criterion).

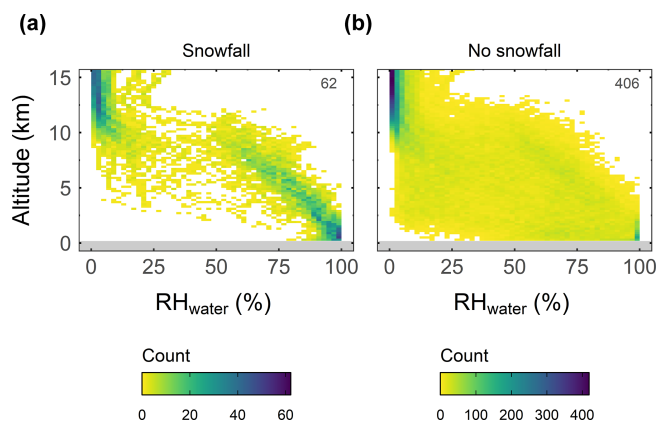


Figure A5. Same plot as Fig. 5, but for RH_{water} .

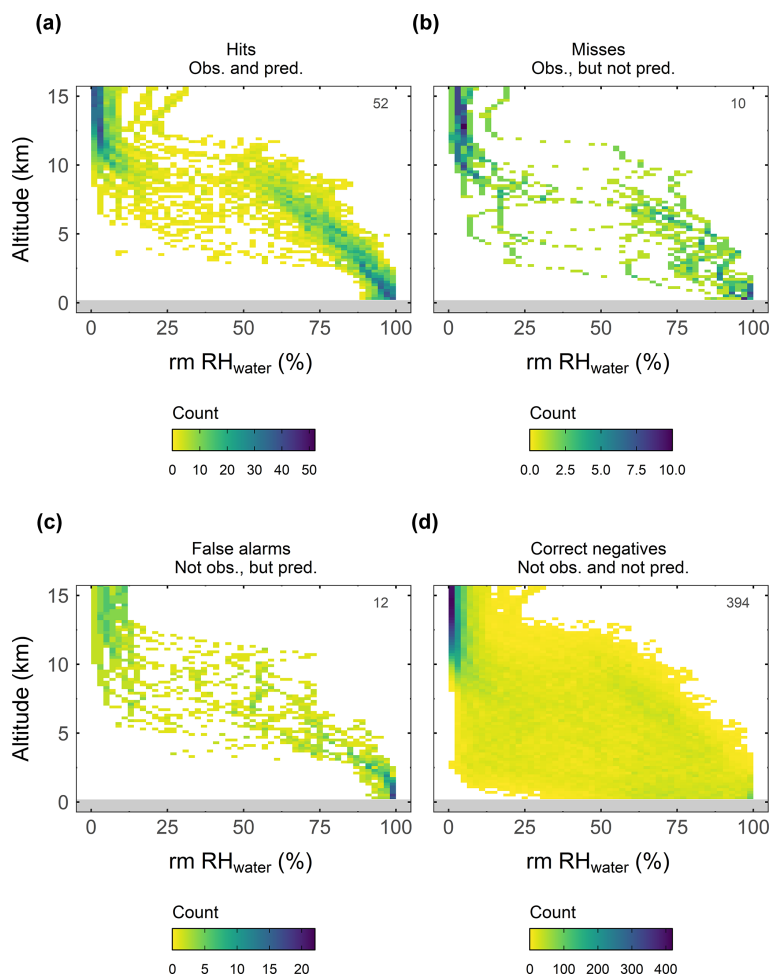


Figure A6. Same plot as Fig. 7, but for RH_{water} .

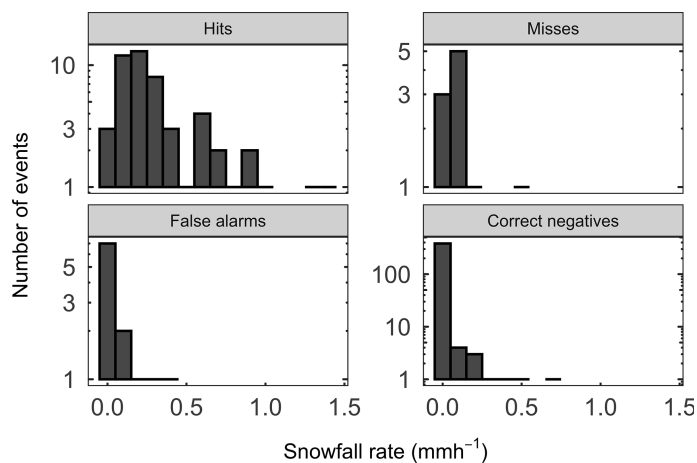


Figure A7. Snowfall rate by intervals measured optically during the events grouped by *hits*, *misses*, *false alarms*, and *correct negatives* based on the criterion $running\ mean\ RH_{ice} \geq 97\%$ throughout the lower 2.7 km to predict snowfall. The y axis scale for each panel is different.

Data availability. The Vaisala data product of the RS41 sounding profiles are available via the GRUAN's community-internal website (registration and login required) via <https://www.gruan.org/data-products/edt/rs41-edt-1/data-availability> (last access: 10 October 2022; Sommer et al., 2017). The ground-based weather parameters are accessible via <https://fmiodata-convert-api-prod.out.ocp.fmi.fi/preview/f6397a39-6254-4e53-9a7f-1509ba84c111/?locale=en> (last access: 7 October 2022; Finnish Meteorological Institute, 2022). The MASC images are available from the authors upon request.

Author contributions. CM and FC conceived the study. LZ modified, installed, and maintained the MASC instrument with help from FC and know-how from AB. RK performed the radiosonde launches. LZ processed the MASC images and CM classified the ice particles. CM performed the analysis and prepared the figures. CM, LZ, RK, AB, and FC interpreted the data. CM drafted the paper with contributions from all co-authors.

Competing interests. The contact author has declared that none of the authors has any competing interests.

Disclaimer. Publisher's note: Copernicus Publications remains neutral with regard to jurisdictional claims in published maps and institutional affiliations.

Acknowledgements. The authors are grateful to the Finnish Meteorological Institute for providing the infrastructure and the ground-based weather parameters on site. We thank the team in Sodankylä for their support on site. Special thanks to Jaakko Siltakoski for providing images of the MASC instrument and helping during the installations in the SPICE field. We greatly appreciate the support of Antti Poikonen for establishing remote access to the MASC and Michael Sommer for his help in downloading the GRUAN data. We are grateful to Pedro Batista for his advice during coding in R and his help in creating the maps in GIS. We acknowledge the NOAA Air Resources Laboratory for providing access to the HYSPLIT model through the READY website (<https://www.ready.noaa.gov/HYSPLIT.php>, last access: 31 January 2022). We acknowledge financial support by the Swiss National Science Foundation and the Department of Environmental Sciences at University of Basel. We express our gratitude to the two anonymous referees for their constructive comments.

Financial support. This research has been supported by the Schweizerischer Nationalfonds zur Förderung der Wissenschaftlichen Forschung (grant no. 200021_169620) and the Department of Environmental Sciences, University of Basel.

Review statement. This paper was edited by Luis A. Ladino and reviewed by three anonymous referees.

References

- Bailey, M. P. and Hallett, J.: A comprehensive habit diagram for atmospheric ice crystals: confirmation from the laboratory, AIRS II, and other field studies, *J. Atmos. Sci.*, 66, 2888–2899, <https://doi.org/10.1175/2009JAS2883.1>, 2009.
- Barnett, T., Adam, J., and Lettenmaier, D.: Potential impacts of a warming climate on water availability in snow-dominated regions, *Nature*, 438, 303–309, <https://doi.org/10.1038/nature04141>, 2005.
- Bennett, N. D., Croke, B. F., Guariso, G., Guillaume, J. H., Hamilton, S. H., Jakeman, A. J., Marsili-Libelli, S., Newham, L. T., Norton, J. P., Perrin, C., Pierce, S. A., Robson, B., Seppelt, R., Voinov, A. A., Fath, B. D., and Andreassian, V.: Characterising performance of environmental models, *Environ. Modell. Softw.*, 40, 1–20, <https://doi.org/10.1016/j.envsoft.2012.09.011>, 2013.
- Boudala, F. S., Isaac, G. A., Rasmussen, R., Cober, S. G., and Scott, B.: Comparisons of Snowfall Measurements in Complex Terrain Made During the 2010 Winter Olympics in Vancouver, *Pure Appl. Geophys.*, 171, 113–127, <https://doi.org/10.1007/s00024-012-0610-5>, 2014.
- Casella, D., Panegrossi, G., Sanò, P., Marra, A. C., Dietrich, S., Johnson, B. T., and Kulie, M. S.: Evaluation of the GPM-DPR snowfall detection capability: Comparison with CloudSat-CPR, *Atmos. Res.*, 197, 64–75, <https://doi.org/10.1016/j.atmosres.2017.06.018>, 2017.
- Costa, A., Meyer, J., Afchine, A., Luebke, A., Günther, G., Dorsey, J. R., Gallagher, M. W., Ehrlich, A., Wendisch, M., Baumgardner, D., Wex, H., and Krämer, M.: Classification of Arctic, midlatitude and tropical clouds in the mixed-phase temperature regime, *Atmos. Chem. Phys.*, 17, 12219–12238, <https://doi.org/10.5194/acp-17-12219-2017>, 2017.
- David, R. O., Marcolli, C., Fahrni, J., Qiu, Y., Perez Sirkin, Y. A., Molinero, V., Mahrt, F., Brühwiler, D., Lohmann, U., and Kanji, Z. A.: Pore condensation and freezing is responsible for ice formation below water saturation for porous particles, *P. Natl. Acad. Sci. USA*, 116, 8184–8189, <https://doi.org/10.1073/pnas.1813647116>, 2019.
- Delanoë, J., Protat, A., Jourdan, O., Pelon, J., Papazzoni, M., Dupuy, R., Gayet, J.-F., and Jouan, C.: Comparison of airborne in situ, airborne Radar-Lidar, and spaceborne Radar-Lidar retrievals of polar ice cloud properties sampled during the POLARCAT campaign, *J. Atmos. Ocean. Tech.*, 30, 57–73, <https://doi.org/10.1175/JTECH-D-11-00200.1>, 2013.
- DeMott, P. J., Prenni, A. J., McMeeking, G. R., Sullivan, R. C., Petters, M. D., Tobo, Y., Niemand, M., Möhler, O., Snider, J. R., Wang, Z., and Kreidenweis, S. M.: Integrating laboratory and field data to quantify the immersion freezing ice nucleation activity of mineral dust particles, *Atmos. Chem. Phys.*, 15, 393–409, <https://doi.org/10.5194/acp-15-393-2015>, 2015.
- Fick, S. E. and Hijmans, R. J.: WorldClim 2: new 1-km spatial resolution climate surfaces for global land areas, *Int. J. Climatol.*, 37, 4302–4315, <https://doi.org/10.1002/joc.5086>, 2017.
- Finnish Meteorological Institute (Ilmatieteen laitos): Sodankylä Tähtelä, 10-min weather observations from January 1, 2019 to December 31, 2020, Ilmatieteen laitos [data set], <https://fmiodata-convert-api-prod.out.ocp.fmi.fi/preview/f6397a39-6254-4e53-9a7f-1509ba84c111/?locale=en>, last access: 7 October 2022.

- Fridlind, A. M., van Dierenhoven, B., Ackerman, A. S., Avramov, A., Mrowiec, A., Morrison, H., Zuidema, P., and Shupe, M. D.: A FIRE-ACE/SHEBA case study of mixed-phase Arctic boundary layer clouds: Entrainment rate limitations on rapid primary ice nucleation processes, *J. Atmos. Sci.*, 69, 365–389, <https://doi.org/10.1175/JAS-D-11-052.1>, 2012.
- Fukuta, N. and Takahashi, T.: The growth of atmospheric ice crystals: A summary of findings in vertical supercooled cloud tunnel studies, *J. Atmos. Sci.*, 56, 1963–1979, 1999.
- Garrett, T. J., Fallgatter, C., Shkurko, K., and Howlett, D.: Fall speed measurement and high-resolution multi-angle photography of hydrometeors in free fall, *Atmos. Meas. Tech.*, 5, 2625–2633, <https://doi.org/10.5194/amt-5-2625-2012>, 2012.
- Gierens, R., Kneifel, S., Shupe, M. D., Ebell, K., Maturilli, M., and Löhnert, U.: Low-level mixed-phase clouds in a complex Arctic environment, *Atmos. Chem. Phys.*, 20, 3459–3481, <https://doi.org/10.5194/acp-20-3459-2020>, 2020.
- Hall, A. and Qu, X.: Using the current seasonal cycle to constrain snow albedo feedback in future climate change, *Geophys.*, 33, L03502, <https://doi.org/10.1029/2005GL025127>, 2006.
- Hallett, J. and Mossop, S. C.: Production of secondary ice particles during the riming process, *Nature*, 249, 26–28, 1974.
- Hanna, J. W., Schultz, D. M., and Irving, A. R.: Cloud-top temperatures for precipitating winter clouds, *J. Appl. Meteorol. Clim.*, 47, 351–359, <https://doi.org/10.1175/2007JAMC1549.1>, 2008.
- Hirsikko, A., O'Connor, E. J., Komppula, M., Korhonen, K., Pfüller, A., Giannakaki, E., Wood, C. R., Bauer-Pfundstein, M., Poikonen, A., Karppinen, T., Lonka, H., Kurri, M., Heinonen, J., Moisseev, D., Asmi, E., Aaltonen, V., Nordbo, A., Rodriguez, E., Lihavainen, H., Laaksonen, A., Lehtinen, K. E. J., Laurila, T., Petäjä, T., Kulmala, M., and Viisanen, Y.: Observing wind, aerosol particles, cloud and precipitation: Finland's new ground-based remote-sensing network, *Atmos. Meas. Tech.*, 7, 1351–1375, <https://doi.org/10.5194/amt-7-1351-2014>, 2014.
- Hobbs, P. V., Chang, S., and Locatelli, J. D.: The dimensions and aggregation of ice crystals in natural clouds, *J. Geophys. Res.*, 79, 2199–2206, <https://doi.org/10.1029/JC079i015p02199>, 1974.
- Hyyärinen, O.: A Probabilistic Derivation of Heidke Skill Score, *Weather Forecast.*, 29, 177–181, <https://doi.org/10.1175/WAF-D-13-00103.1>, 2014.
- Jensen, M. P., Holdridge, D. J., Survo, P., Lehtinen, R., Baxter, S., Toto, T., and Johnson, K. L.: Comparison of Vaisala radiosondes RS41 and RS92 at the ARM Southern Great Plains site, *Atmos. Meas. Tech.*, 9, 3115–3129, <https://doi.org/10.5194/amt-9-3115-2016>, 2016.
- Jiusto, J. E. and Weickmann, H. K.: types of snowfall, *B. Am. Meteorol. Soc.*, 54, 1148–1162, [https://doi.org/10.1175/1520-0477\(1973\)054<1148:TOS>2.0.CO;2](https://doi.org/10.1175/1520-0477(1973)054<1148:TOS>2.0.CO;2), 1973.
- Kanji, Z. A. and Abbatt, J. P. D.: Laboratory studies of ice formation via deposition mode nucleation onto mineral dust and n-hexane soot samples, *J. Geophys.*, 111, D16204, <https://doi.org/10.1029/2005JD006766>, 2006.
- Kanji, Z. A., Ladino, L. A., Wex, H., Boose, Y., Burkert-Kohn, M., Cziczko, D. J., and Krämer, M.: Overview of ice nucleating particles, *Meteor. Mon.*, 58, 1.1–1.33, <https://doi.org/10.1175/AMSMONOGRAPHIS-D-16-0006.1>, 2017.
- Kikuchi, M., Okamoto, H., Sato, K., Suzuki, K., Cesana, G., Hagiwara, Y., Takahashi, N., Hayasaka, T., and Oki, R.: Development of algorithm for discriminating hydrometeor particle types with a synergistic use of CloudSat and CALIPSO, *J. Geophys.*, 122, 11022–11044, <https://doi.org/10.1002/2017JD027113>, 2017.
- Kneifel, S. and Moisseev, D.: Long-term statistics of riming in nonconvective clouds derived from ground-based Doppler cloud radar observations, *J. Atmos. Sci.*, 77, 3495–3508, <https://doi.org/10.1175/JAS-D-20-0007.1>, 2020.
- Kobayashi, T.: The growth of snow crystals at low supersaturations, *Philos. Mag.*, 6, 1363–1370, <https://doi.org/10.1080/14786436108241231>, 1961.
- Kochendorfer, J., Nitu, R., Wolff, M., Mekis, E., Rasmussen, R., Baker, B., Earle, M. E., Reverdin, A., Wong, K., Smith, C. D., Yang, D., Roulet, Y.-A., Buisan, S., Laine, T., Lee, G., Aceituno, J. L. C., Alastrué, J., Isaksen, K., Meyers, T., Brækkan, R., Landolt, S., Jachcik, A., and Poikonen, A.: Analysis of single-Alter-shielded and unshielded measurements of mixed and solid precipitation from WMO-SPICE, *Hydrol. Earth Syst. Sci.*, 21, 3525–3542, <https://doi.org/10.5194/hess-21-3525-2017>, 2017.
- Korolev, A. and Leisner, T.: Review of experimental studies of secondary ice production, *Atmos. Chem. Phys.*, 20, 11767–11797, <https://doi.org/10.5194/acp-20-11767-2020>, 2020.
- Liu, G.: Deriving snow cloud characteristics from CloudSat observations, *J. Geophys.*, 113, D00A09, <https://doi.org/10.1029/2007JD009766>, 2008.
- Locatelli, J. D. and Hobbs, P. V.: Fall speeds and masses of solid precipitation particles, *J. Geophys. Res.*, 79, 2185–2197, 1974.
- Madonna, F., Kivi, R., Dupont, J.-C., Ingleby, B., Fujiwara, M., Romanens, G., Hernandez, M., Calbet, X., Rosoldi, M., Giunta, A., Karppinen, T., Iwabuchi, M., Hoshino, S., von Rohden, C., and Thorne, P. W.: Use of automatic radiosonde launchers to measure temperature and humidity profiles from the GRUAN perspective, *Atmos. Meas. Tech.*, 13, 3621–3649, <https://doi.org/10.5194/amt-13-3621-2020>, 2020.
- Magono, C. and Lee, C. W.: Meteorological classification of natural snow crystals, *Journal of the Faculty of Science, Hokkaido University, Series 7*, 2, 321–335, 1966.
- Mignani, C., Creamean, J. M., Zimmermann, L., Alewell, C., and Conen, F.: New type of evidence for secondary ice formation at around -15°C in mixed-phase clouds, *Atmos. Chem. Phys.*, 19, 877–886, <https://doi.org/10.5194/acp-19-877-2019>, 2019.
- Mioche, G., Jourdan, O., Delanoë, J., Gourbeyre, C., Febvre, G., Dupuy, R., Monier, M., Szczap, F., Schwarzenboeck, A., and Gayet, J.-F.: Vertical distribution of microphysical properties of Arctic springtime low-level mixed-phase clouds over the Greenland and Norwegian seas, *Atmos. Chem. Phys.*, 17, 12845–12869, <https://doi.org/10.5194/acp-17-12845-2017>, 2017.
- Morrison, H., Zuidema, P., McFarquhar, G. M., Bansemer, A., and Heymsfield, A. J.: Snow microphysical observations in shallow mixed-phase and deep frontal Arctic cloud systems, *Q. J. Roy. Meteor. Soc.*, 137, 1589–1601, <https://doi.org/10.1002/qj.840>, 2011.
- Mosimann, L., Weingartner, E., and Waldvogel, A.: An Analysis of Accreted Drop Sizes and Mass on Rimed Snow Crystals, *J. Atmos. Sci.*, 51, 1548–1558, [https://doi.org/10.1175/1520-0469\(1994\)051<1548:AAOADS>2.0.CO;2](https://doi.org/10.1175/1520-0469(1994)051<1548:AAOADS>2.0.CO;2), 1994.
- Mossop, S. C.: The influence of drop size distribution on the production of secondary ice particles during graupel growth, *Q. J. Roy. Meteor. Soc.*, 104, 323–330, <https://doi.org/10.1002/qj.49710444007>, 1978.

- Murray, B. J., Broadley, S. L., Wilson, T. W., Bull, S. J., Wills, R. H., Christenson, H. K., and Murray, E. J.: Kinetics of the homogeneous freezing of water, *Phys. Chem. Chem. Phys.*, 12, 10380–10387, <https://doi.org/10.1039/c003297b>, 2010.
- Mülmenstädt, J., Sourdeval, O., Delanoë, J., and Quaas, J.: Frequency of occurrence of rain from liquid-, mixed-, and ice-phase clouds derived from A-Train satellite retrievals, *Geophys. Res. Lett.*, 42, 6502–6509, <https://doi.org/10.1002/2015GL064604>, 2015.
- Nakaya, U.: *Snow crystals: Natural and artificial*, Harvard University Press, Cambridge, UK, 510 pp., ISBN 9780674182769, 1954.
- Nelson, J. T. and Baker, M. B.: New theoretical framework for studies of vapor growth and sublimation of small ice crystals in the atmosphere, *J. Geophys. Res.*, 101, 7033–7047, <https://doi.org/10.1029/95JD03162>, 1996.
- Nitu, R., Roulet, Y.-A., Wolff, M., Earle, M., Reverdin, A., Smith, C., Kochendorfer, J., Morin, S., Rasmussen, R., Wong, K., Alastrué, J., Arnold, L., Baker, B., Buisán, S., Collado, J., Colli, M., Collins, B., Gaydos, A., Hannula, H.-R., Hoover, J., Joe, P., Kontu, A., Laine, T., Lanza, L., Lanzinger, E., Lee, G., Lejeune, Y., Leppänen, L., Mekis, E., Panel, J.-M., Poikonen, A., Ryu, S., Sabatini, F., Theriault, J., Yang, D., Genthon, C., van den Heuvel, F., Hirasawa, N., Konishi, H., Motoyoshi, H., Nakai, S., Nishimura, K., Senese, A., and Yamashita, K.: WMO Solid Precipitation Intercomparison Experiment (SPICE) (2012–2015), IOM Report No. 131, WMO, https://library.wmo.int/index.php?lvl=notice_display&id=20742 (last access: 7 October 2022), 2018.
- Pasquier, J. T., Henneberger, J., Ramelli, F., Lauber, A., David, R. O., Wieder, J., Carlsen, T., Gierens, R., Maturilli, M., and Lohmann, U.: Conditions favorable for secondary ice production in Arctic mixed-phase clouds, *Atmos. Chem. Phys. Discuss.* [preprint], <https://doi.org/10.5194/acp-2022-314>, in review, 2022.
- Phillips, V. T. J., Yano, J.-I., and Khain, A.: Ice multiplication by breakup in ice-ice collisions. Part I: Theoretical formulation, *J. Atmos. Sci.*, 74, 1705–1719, <https://doi.org/10.1175/JAS-D-16-0224.1>, 2017.
- Power, B. A., Summers, P. W., and D'Avignon, J.: Snow crystal forms and riming effects as related to snowfall density and general storm conditions, *J. Atmos. Sci.*, 21, 300–305, [https://doi.org/10.1175/1520-0469\(1964\)021<0300:SCFARE>2.0.CO;2](https://doi.org/10.1175/1520-0469(1964)021<0300:SCFARE>2.0.CO;2), 1964.
- Praz, C., Roulet, Y.-A., and Berne, A.: Solid hydrometeor classification and riming degree estimation from pictures collected with a Multi-Angle Snowflake Camera, *Atmos. Meas. Tech.*, 10, 1335–1357, <https://doi.org/10.5194/amt-10-1335-2017>, 2017.
- Proske, U., Bessenbacher, V., Dedekind, Z., Lohmann, U., and Neubauer, D.: How frequent is natural cloud seeding from ice cloud layers ($< -35^{\circ}\text{C}$) over Switzerland?, *Atmos. Chem. Phys.*, 21, 5195–5216, <https://doi.org/10.5194/acp-21-5195-2021>, 2021.
- Ramelli, F., Henneberger, J., David, R. O., Bühl, J., Radenz, M., Seifert, P., Wieder, J., Lauber, A., Pasquier, J. T., Engelmann, R., Mignani, C., Hervo, M., and Lohmann, U.: Microphysical investigation of the seeder and feeder region of an Alpine mixed-phase cloud, *Atmos. Chem. Phys.*, 21, 6681–6706, <https://doi.org/10.5194/acp-21-6681-2021>, 2021.
- Schneider, J., Höhler, K., Heikkilä, P., Keskinen, J., Bertozzi, B., Bogert, P., Schorr, T., Umo, N. S., Vogel, F., Brasseur, Z., Wu, Y., Hakala, S., Duplissy, J., Moiseev, D., Kulmala, M., Adams, M. P., Murray, B. J., Korhonen, K., Hao, L., Thomson, E. S., Castarède, D., Leisner, T., Petäjä, T., and Möhler, O.: The seasonal cycle of ice-nucleating particles linked to the abundance of biogenic aerosol in boreal forests, *Atmos. Chem. Phys.*, 21, 3899–3918, <https://doi.org/10.5194/acp-21-3899-2021>, 2021.
- Schrod, J., Thomson, E. S., Weber, D., Kossmann, J., Pöhlker, C., Saturno, J., Ditas, F., Artaxo, P., Clouard, V., Saurel, J.-M., Ebert, M., Curtius, J., and Bingemer, H. G.: Long-term deposition and condensation ice-nucleating particle measurements from four stations across the globe, *Atmos. Chem. Phys.*, 20, 15983–16006, <https://doi.org/10.5194/acp-20-15983-2020>, 2020.
- Seo, W.-S., Eun, S.-H., Kim, B.-G., Ko, A.-R., Seong, D.-K., Lee, K.-M., Jeon, H.-R., Han, S.-O., and Park, Y.-S.: Study on characteristics of snowfall and snow crystal habits in the ESSAY (Experiment on Snow Storms At Yeongdong) campaign in 2014, *Atmosphere*, 25, 261–270, <https://doi.org/10.14191/Atmos.2015.25.2.261>, 2015.
- Shupe, M. D. and Intrieri, J. M.: Cloud radiative forcing of the Arctic surface: The influence of cloud properties, surface albedo, and solar zenith angle, *J. Climate*, 17, 616–628, [https://doi.org/10.1175/1520-0442\(2004\)017<0616:CRFOTA>2.0.CO;2](https://doi.org/10.1175/1520-0442(2004)017<0616:CRFOTA>2.0.CO;2), 2004.
- Silber, I., Fridlind, A. M., Verlinde, J., Ackerman, A. S., Cesana, G. V., and Knopf, D. A.: The prevalence of precipitation from polar supercooled clouds, *Atmos. Chem. Phys.*, 21, 3949–3971, <https://doi.org/10.5194/acp-21-3949-2021>, 2021.
- Sommer, M., von Rohden, C., and Dirksen, R.: RS41 Vaisala Data Product Version 1 (RS41-EDT.1), GRUAN Lead Centre [data set], <https://www.gruan.org/data/data-products/edt/rs41-edt-1/data-availability> (last access: 10 October 2022), 2017.
- Tan, I. and Storelvmo, T.: Evidence of strong contributions from mixed-phase clouds to Arctic climate change, *Geophys. Res. Lett.*, 46, 2894–2902, <https://doi.org/10.1029/2018GL081871>, 2019.
- Ullrich, R., Hoose, C., Möhler, O., Niemand, M., Wagner, R., Höhler, K., Hiranuma, N., Saathoff, H., and Leisner, T.: A new ice nucleation active site parameterization for desert dust and soot, *J. Atmos. Sci.*, 74, 699–717, <https://doi.org/10.1175/JAS-D-16-0074.1>, 2017.
- Vardiman, L.: The generation of secondary ice particles in clouds by crystal–crystal collisions, *J. Atmos. Sci.*, 35, 2168–2180, [https://doi.org/10.1175/1520-0469\(1978\)035<2168:TGOSIP>2.0.CO;2](https://doi.org/10.1175/1520-0469(1978)035<2168:TGOSIP>2.0.CO;2), 1978.
- Vassel, M., Ickes, L., Maturilli, M., and Hoose, C.: Classification of Arctic multilayer clouds using radiosonde and radar data in Svalbard, *Atmos. Chem. Phys.*, 19, 5111–5126, <https://doi.org/10.5194/acp-19-5111-2019>, 2019.
- Wieder, J., Ihn, N., Mignani, C., Haarrig, M., Bühl, J., Seifert, P., Engelmann, R., Ramelli, F., Kanji, Z. A., Lohmann, U., and Henneberger, J.: Retrieving ice-nucleating particle concentration and ice multiplication factors using active remote sensing validated by in situ observations, *Atmos. Chem. Phys.*, 22, 9767–9797, <https://doi.org/10.5194/acp-22-9767-2022>, 2022.