



Pan-Arctic seasonal cycles and long-term trends of aerosol properties from 10 observatories

Julia Schmale¹, Sangeeta Sharma², Stefano Decesari³, Jakob Pernov^{1,4}, Andreas Massling⁴, Hans-Christen Hansson⁵, Knut von Salzen⁶, Henrik Skov⁴, Elisabeth Andrews⁷, Patricia K. Quinn⁸, Lucia M. Upchurch^{8,9}, Konstantinos Eleftheriadis¹⁰, Rita Traversi^{11,12}, Stefania Gilardoni¹², Mauro Mazzola¹², James Laing¹³, and Philip Hopke¹⁴

¹Extreme Environments Research Laboratory, École Polytechnique fédérale de Lausanne, 1951 Sion, Switzerland

²Environment and Climate Change Canada, Science and Technology Branch, Climate Research Division, 4905 Dufferin Street, Toronto, Ontario M3H 5T4, Canada

³Institute of Atmospheric Sciences and Climate, National Research Council of Italy, 40129 Bologna, Italy

⁴Department of Environmental Science, iClimate, Aarhus University, Frederiksborgvej 399, 4000 Roskilde, Denmark

⁵Department of Environmental Science, Stockholm University, 106 91 Stockholm, Sweden

⁶Canadian Centre for Climate Modelling and Analysis, Environment and Climate Change Canada, Victoria, British Columbia, Canada

⁷Cooperative Institute for Research in Environmental Sciences (CIRES), University of Colorado, Boulder, Colorado 80309, USA

⁸Pacific Marine Environmental Laboratory, National Oceanic and Atmospheric Administration, Seattle, WA, USA

⁹Cooperative Institute for Climate, Ocean, and Ecosystem Studies, University of Washington, Seattle, WA, USA

¹⁰NCSR “Demokritos”-Institute of Nuclear and Radiological Sciences and Technology, Energy and Safety Environmental Radioactivity Laboratory, 15310 Athens, Greece

¹¹Department of Chemistry “Ugo Schiff”, University of Florence, 50019 Sesto F.no (Florence), Italy

¹²Institute of Polar Sciences, National Research Council, ISP-CNR, 30172 Venice, Italy

¹³Washington State Department of Ecology, 15700 Dayton Ave N, Shoreline, WA 98133

¹⁴Institute for a Sustainable Environment, Clarkson University, Potsdam, NY 13699, USA

Correspondence: Julia Schmale (julia.schmale@epfl.ch)

Received: 3 September 2021 – Discussion started: 8 September 2021

Revised: 20 January 2022 – Accepted: 21 January 2022 – Published: 8 March 2022

Abstract. Even though the Arctic is remote, aerosol properties observed there are strongly influenced by anthropogenic emissions from outside the Arctic. This is particularly true for the so-called Arctic haze season (January through April). In summer (June through September), when atmospheric transport patterns change, and precipitation is more frequent, local Arctic sources, i.e., natural sources of aerosols and precursors, play an important role. Over the last few decades, significant reductions in anthropogenic emissions have taken place. At the same time a large body of literature shows evidence that the Arctic is undergoing fundamental environmental changes due to climate forcing, leading to enhanced emissions by natural processes that may impact aerosol properties.

In this study, we analyze 9 aerosol chemical species and 4 particle optical properties from 10 Arctic observatories (Alert, Kevo, Pallas, Summit, Thule, Tiksi, Barrow/Utqiagvik, Villum, and Gruevbadet and Zeppelin Observatory – both at Ny-Ålesund Research Station) to understand changes in anthropogenic and natural aerosol contributions. Variables include equivalent black carbon, particulate sulfate, nitrate, ammonium, methanesulfonic

acid, sodium, iron, calcium and potassium, as well as scattering and absorption coefficients, single scattering albedo and scattering Ångström exponent.

First, annual cycles are investigated, which despite anthropogenic emission reductions still show the Arctic haze phenomenon. Second, long-term trends are studied using the Mann–Kendall Theil–Sen slope method. We find in total 41 significant trends over full station records, i.e., spanning more than a decade, compared to 26 significant decadal trends. The majority of significantly declining trends is from anthropogenic tracers and occurred during the haze period, driven by emission changes between 1990 and 2000. For the summer period, no uniform picture of trends has emerged. Twenty-six percent of trends, i.e., 19 out of 73, are significant, and of those 5 are positive and 14 are negative. Negative trends include not only anthropogenic tracers such as equivalent black carbon at Kevo, but also natural indicators such as methanesulfonic acid and non-sea-salt calcium at Alert. Positive trends are observed for sulfate at Gruvebadet.

No clear evidence of a significant change in the natural aerosol contribution can be observed yet. However, testing the sensitivity of the Mann–Kendall Theil–Sen method, we find that monotonic changes of around $5\% \text{ yr}^{-1}$ in an aerosol property are needed to detect a significant trend within one decade. This highlights that long-term efforts well beyond a decade are needed to capture smaller changes. It is particularly important to understand the ongoing natural changes in the Arctic, where interannual variability can be high, such as with forest fire emissions and their influence on the aerosol population.

To investigate the climate-change-induced influence on the aerosol population and the resulting climate feedback, long-term observations of tracers more specific to natural sources are needed, as well as of particle microphysical properties such as size distributions, which can be used to identify changes in particle populations which are not well captured by mass-oriented methods such as bulk chemical composition.

1 Introduction

Despite its remoteness, the Arctic is one of the main receptors of anthropogenic air pollutant emissions from the Northern Hemisphere (AMAP, 2015; Barrie, 1986; Quinn et al., 2007; Shaw, 1995; Heidam, 1981). Arctic air pollution has been in focus for several decades, because of the detrimental effects on ecosystems, for example through acidification (AMAP, 2006) and deposition of pollutants that bioaccumulate especially in the marine food web (Rigét et al., 2019), and due to climate impacts (Sand et al., 2015). The Arctic Monitoring and Assessment Programme (AMAP) has issued a number of reports on the effects of short-lived climate forcers (AMAP, 2011, 2015) and found in the 2015 report that the Arctic equilibrium temperature response is in total $+0.35\text{ °C}$ due to forcing from black carbon (BC) in the atmosphere ($+0.40\text{ °C}$), BC on snow ($+0.22\text{ °C}$), atmospheric organic carbon (-0.04 °C) and particulate sulfate (-0.23 °C). The summary for policy makers of the most recent AMAP report shows that the Arctic has warmed by 0.28 °C per decade between 1990 and 2015 due to reductions in SO_2 emissions. Reduction in BC emissions have led to a cooling of about 0.06 °C per decade, whereas the CO_2 increase contributed 0.29 °C per decade (AMAP, 2021).

Surface monitoring sites around the Arctic (Fig. 1) have been operated to determine air pollutants transported to the Arctic since as early as the 1960s at Kevo, Finland (Dutkiewicz et al., 2014; Yli-Tuomi et al., 2003b; Laing et al., 2014a); the 1970s at Barrow/Utqiagvik, USA (Bodhaine and Dutton, 1993), and at Zeppelin, Ny-Ålesund Re-

search Station (Platt et al., 2021); the 1980s at Alert, Canada (Sturges and Barrie, 1989); the 1990s at Villum Research Station, Greenland (Nguyen et al., 2016; Heidam et al., 1999); and more recently at a number of other observatories such as Summit, Greenland (Schmeisser et al., 2018); Tiksi, Russia (Asmi et al., 2016); Gruvebadet, Ny-Ålesund Research Station (Gilardoni et al., 2020; Traversi et al., 2021); Thule, Greenland (Becagli et al., 2019); and at Pallas, Finland (Aaltonen et al., 2006; Lohila et al., 2015). Observations at these stations cover a wide range of aerosol properties including their chemical composition, i.e., particulate sulfate (SO_4^{2-}), nitrate (NO_3^-), ammonium (NH_4^+), mainly based on filter collection and subsequent laboratory analysis, and optical properties such as scattering and absorption coefficients and derived equivalent black carbon (EBC) concentrations. Using the Eclipse V4.0a emission inventory and state-of-the-art models, AMAP (2015) found that emission sources in East and South Asia and Russia are the largest contributors to black carbon burden in the Arctic, with particularly large contributions of domestic sources in East and South Asia, and emissions from wildfires and gas flaring in Russia. Depending on the location of the observations, different source regions become relevant (Backman et al., 2021). Based on Lagrangian transport model simulations, Hirdman et al. (2010b) showed for Zeppelin, Barrow/Utqiagvik and Alert that northern Eurasia is the main source region, whereas emissions from North America are less influential, supporting earlier work by Hopke et al. (1995) and Polissar et al. (2001). The Summit observatory located above 3000 m a.s.l. is more susceptible to emissions of Southern

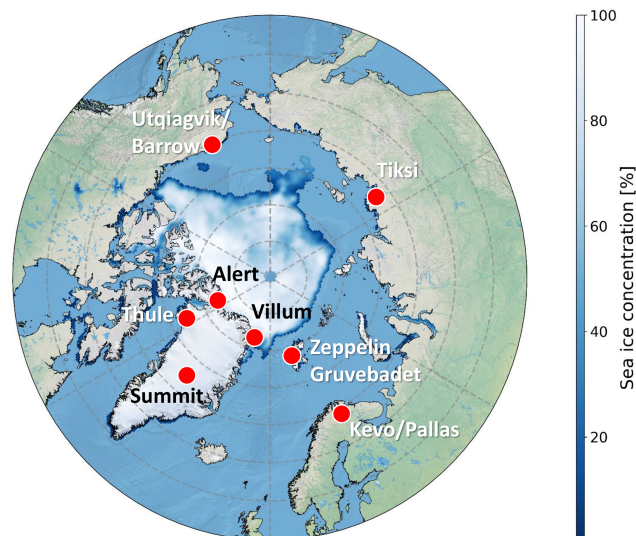


Figure 1. Locations of observatories discussed in this study. The blue shading represents sea ice concentration (15 September 2018), reported as a fraction of covered surface (Maslanik and Stroeve, 1999). The base map is from Natural Earth II (<https://www.naturalearthdata.com/>, last access: 1 March 2021).

Europe (Hirdman et al., 2010b), since those are uplifted and arrive at the Arctic further aloft. From a near-sea-level surface observatory perspective, emissions in Asia and particularly southern Asia are less important because they are transported through the higher troposphere and do not significantly influence boundary layer measurements (AMAP, 2015; Shindell et al., 2008). The seasonality of BC can be very different depending on the altitude. Mahmood et al. (2016) showed that, for example, BC in the upper troposphere is only weakly influenced by wet deposition in strati-form clouds, whereas lower tropospheric Arctic BC concentrations are highly sensitive to wet deposition.

The surface aerosol observations have created a large data resource (for a history on monitoring sites, see Platt et al., 2021), which has been analyzed for seasonal cycles. The seasonal cycle of aerosols in the Arctic is generally driven by atmospheric transport patterns, which, during winter and early spring, favor long-range transport from mid-latitudes, and removal processes are minimal allowing for long aerosol lifetimes and accumulation of pollutants (e.g., Stohl, 2006). This leads to the build-up of air pollution, the so-called Arctic haze (Heidam, 1981; Barrie, 1986; Schnell, 1984; Radke et al., 1976). During summer, the Arctic front is located far to the north and the Arctic dome largely prevents the transport of particles from sources at mid-latitude from reaching the high Arctic (Bozem et al., 2019). The summertime Arctic atmosphere is much less stratified, and frequent precipitation removes aerosols efficiently, while simultaneously, conditions for long-range transport of pollution are also less frequent. Hence, the summer boundary layer is character-

ized by much lower aerosol concentrations, predominantly reflecting local and regional emissions. Overall, the seasonality of aerosol properties at Arctic sites depends on the geographical sectors, and on how the specific sites are connected to upstream pollution sources through atmospheric transport. Sharma et al. (2019) analyzed annual cycles of 20 aerosol constituents at Alert. In brief, for all anthropogenic tracers they find a winter peak and a summer minimum, as expected. For some natural tracers, such as iodine, methane-sulfonic acid (MSA) and mineral dust, they find two modes, one in spring and the other in summer/fall. For mineral dust the spring peak represents long-range-transported dust, while the summer/fall peak reflects more local emissions when the snow cover is at a minimum. Similarly, for MSA, an oxidation product from dimethyl sulfide (DMS), which is derived from marine microbial activity, the spring maximum reflects long-range transport, while the summer maximum is due to more local emissions. The reasons for the iodine pattern are not entirely clear but they are related likely to the return of the sun in spring and freeze-up processes in fall (Baccarini et al., 2020). For other natural tracers, such as sodium (Na^+) and chloride (Cl^-), which mainly originate from sea salt, they find a winter maximum, which is driven by sublimating blowing snow leaving behind salt particles (Huang and Jaeglé, 2017; Fenger et al., 2013). Quinn et al. (2007) reported annual cycles of anthropogenic haze tracers for Barrow/Utqiagvik, Alert, Villum, Zeppelin and several other Eurasian stations. Eckhardt et al. (2015) compiled annual BC and SO_4^{2-} data from the same four stations, as well as Tiksi and Pallas in addition for a model evaluation. Backman et al. (2017) systematically evaluated Aethalometer measurements of black carbon from Barrow/Utqiagvik, Alert, Zeppelin, Summit, Pallas and Tiksi, and Schmeisser et al. (2018) used the same data for a systematic analysis of seasonal cycles of aerosol optical parameters. Moschos et al. (2022a, b) used filter-based analysis of major ions, black carbon and organic carbon to conduct a pan-Arctic source apportionment of total suspended particle mass and PM_{10} (particulate matter with a diameter smaller than or equal to $10\ \mu\text{m}$), revealing that organic aerosol is as abundant in summer as in winter, where natural sources dominate the summer. While the seasonal patterns of the aerosol scattering and absorption coefficients follow the pattern of anthropogenic tracers in the Arctic for four of the sites, Summit and Pallas show unique signals, where the maximum is in summer rather than winter. This difference is attributed to the higher load of natural aerosol emissions from the boreal forest around Pallas (Tunved et al., 2006, 2003) and the long-range transport of fire emissions to Summit during summer (Stohl et al., 2006).

The same data as discussed above in the context of annual cycle studies have been used for the purpose of long-term trend analyses. The longest time series of black carbon measurements was collected at Kevo, Finland, where annual concentrations decreased by 73 % between about 1970 and

2010 (Dutkiewicz et al., 2014). Sharma et al. (2006) found a 33 % decline between 1989 and 2003 for Barrow/Utqiagvik during the haze season. The analysis was updated by Sharma et al. (2013), who found a roughly 40 % decrease for Barrow/Utqiagvik, Alert and Zeppelin between 1990 and 2009. More recent work by Sharma et al. (2019) extended the analysis until 2013, reporting a roughly 50 % decrease in black carbon since 1990 during the haze season. The authors ascribe the decline firstly to the economic changes in the former Soviet Union and secondly to air quality policies in Europe. The aerosol absorption coefficient can also be used to describe the influence of black carbon, an absorbing aerosol. Collaud Coen et al. (2020b) performed trend analyses and found significant trends at Barrow/Utqiagvik over a 10-year horizon of $-9.91\% \text{ yr}^{-1}$ (longer periods did not have a significant trend) and $-0.90\% \text{ yr}^{-1}$ at Tiksi. Alert features a positive trend of $2.77\% \text{ yr}^{-1}$ over 10-year horizons. The data sets they used ended in 2016–2018 depending on the site. Observations for SO_4^{2-} are analogous for Alert, also with a 50 % decline over the same period (Sharma et al., 2019). Hirdman et al. (2010a) derived trends based on annual geometric mean data and found a 21.5 % decline at Zeppelin between 1990 and 2008 in non-sea-salt sulfate (nssSO_4^{2-}) and no trend for Barrow/Utqiagvik between 1997 and 2006. The absence of a trend at the latter station is potentially due to the short time period investigated. For Zeppelin, Platt et al. (2021) found a decline of 44 % between 1990 and 2019. The difference to findings by Hirdman et al. (2010a) can be explained by the use of different data sets and seasonal vs. annual aggregates. EBC and nssSO_4^{2-} are typical anthropogenic combustion tracers during the haze season and therefore show significant negative trends at several stations during winter in the past few decades (Dutkiewicz et al., 2014; Sharma et al., 2019). For summer, a much smaller number of significantly decreasing concentrations has been reported. This is partly because during summer, anthropogenic emissions are transported much less effectively to the Arctic, and EBC as well as nssSO_4^{2-} can also be emitted or derived from natural sources such as wildfires and marine organisms, respectively.

The Arctic is undergoing rapid and unprecedented socio-economic as well as environmental changes. The region is warming 2 to 3 times faster than the global average, a phenomenon called Arctic amplification (Serreze and Barry, 2011). Sea ice has declined by more than 30 % since the 1970s (Meier et al., 2014), marine microbial activity is changing significantly (Arrigo et al., 2012) and an increase in wildfire occurrence of up to 50 % in the circumboreal region is expected by the end of the century (Flannigan et al., 2009). These changes may have important implications for natural aerosol emissions and abundance (Schmale et al., 2021), particularly in summer, when for example BC and OC are emitted from wildfires. Despite the increase in fire emissions in higher latitudes in the past few years, no increase in the trends during the fire seasons has been shown

so far. This could be related to the wildfire plume injection heights, which might reach higher altitudes, and BC and OC could then be transported further aloft and not captured by surface observations. However, knowledge on plume injection heights are still uncertain (Rémy et al., 2017; Ke et al., 2021). From carbon source apportionment studies based on isotopic ratios, it is known that biomass burning dominates the summertime EBC signal (Winiger et al., 2019). However, there are no long-term isotopic observations, and thus it is unknown whether the summertime dominance is a new phenomenon or not. In terms of socio-economic changes, impacts of emissions from oil fields (e.g., Prudhoe Bay in Alaska), shipping (e.g., in Resolute Bay, Canada), flaring (e.g., in Siberia) and Arctic urban areas have been found to change aerosol composition as well as cloud properties (Kolesar et al., 2017; Aliabadi et al., 2015; Schmale et al., 2018; Gunsch et al., 2017).

nssSO_4^{2-} can originate from the oxidation of DMS to SO_2 and further to sulfuric acid (Hoffmann et al., 2016), which can then condense onto preexisting particles and contribute to cloud condensation nuclei or form new ones (Hodshire et al., 2019; Beck et al., 2020; Schmale and Baccarini, 2021; Park et al., 2021). DMS is also converted into MSA in the atmosphere (Hoffmann et al., 2016). It is hypothesized that retreating sea ice allows for more algal blooms in the Arctic Ocean, which would result in more DMS emissions and hence more particulate MSA, a unique tracer for this change. Galí et al. (2019) showed a significant increase in DMS emissions between 1998 and 2016 north of 70° N . A few studies have investigated the trends of particulate MSA and summertime nssSO_4^{2-} in the Arctic. Recently, Moffett et al. (2020) found for Barrow/Utqiagvik that MSA and nssSO_4^{2-} increased by 2.5 % and 2.1 % (July to September), respectively, in the period 1998 to 2017. The authors find a positive correlation with ambient temperature and hypothesize that the trend might result from a mixture of causes, which include retreating sea ice, warmer sea surface temperature and temperature-dependent atmospheric chemical reactions. At Alert, Sharma et al. (2019) found no significant trend in MSA between 1998 and 2013. However, there was a 4 % increase per year (July to August) between 1998 and 2008 (Sharma et al., 2012), reflecting natural variability rather than the effect of sea ice retreat. MSA measured at Kevo showed increasing monthly trends in June and July from 1980 to 2010. In July, the trend peaked in 2002–2003 and then declined (Laing et al., 2013). Overall they found a strong correlation of MSA in June and July with the monthly sea surface temperature anomalies from 30° W to 80° E and 40° to 90° N . A study of MSA concentrations at Gruebadet, Svalbard, and Thule, Greenland, between 2010 and 2017 showed that the relationship between retreating sea ice and particulate MSA is complex and likely not direct (Becagli et al., 2019). While concentrations seem to have a positive trend at Gruebadet, they tend to decline at Thule, while sea ice is retreating in both lo-

cations. The presence of algae responsible for the production of DMS precursors in the water is necessary for DMS release to the atmosphere and subsequent production of MSA. A modeling study has shown that even if more DMS is emitted, it does not mean that higher particulate MSA is observed at the surface stations, because MSA might be incorporated into cloud condensation nuclei (CCN) which are preferentially removed from the atmosphere through wet deposition further amplified by the fact that there is an increase in precipitating clouds with retreating sea ice (Mahmood et al., 2019).

Another important natural aerosol component around the Arctic is sea spray, composed of sea salt and organics. Modeling studies have investigated the climatic effects following the hypothesis that retreating sea ice will lead to more sea spray production (Browse et al., 2014; Struthers et al., 2011). However, long-term observations that show an increased contribution of sea spray are scarce. Increasing trends in sea salt produced by the sea spray were identified at Alert in 34 years of measurements of Na^+ and Cl^- (Sharma et al., 2019). Recently, Heslin-Rees et al. (2020) have analyzed long-term trends of aerosol optical properties from Zeppelin, Svalbard. They found that the scattering Ångström exponent (SAE) became significantly smaller over time. A smaller SAE indicates in general larger particle diameters, and hence the results provide evidence for a change in particle diameters towards larger sizes. Given that coarse-mode particle sources in the Arctic are limited, long-range-transported mineral dust or local soil dust are other potential sources, but sea spray is the main contributing factor. The authors find, however, that the increased coarse mode is a result of changing atmospheric air mass advection patterns rather than enhancement of sea spray production in regions with retreated sea ice. In winter, Na^+ is dominated by blowing snow signals. Higher sea salt contributions at Alert from January to March (Sharma et al., 2019) are found to be due to wind-driven resuspension of sea salt originally deposited on the snowpack from long range transport of sea salt from the North Atlantic Ocean. This contribution is more important than that from frost flowers (Huang and Jaeglé, 2017) as supported by sulfur isotope analysis (Seguin et al., 2014). May et al. (2016) investigated particulate Na^+ at Barrow/Utqiagvik in winter and found that sea spray emissions most likely from open leads or open water were responsible for a considerable fraction of sea salt, rather than blowing snow. This might be an indication for a shift in sea salt sources during winter. However, no long-term analyses have been done. Generally, the Arctic is windier in winter than in summer, with the highest wind speeds between January and April, and the lowest in July and August, based on the 40-year ERA5 climatology (Rinke et al., 2021). Based on a trend analysis on several reanalysis products Vessey et al. (2020) found that there is no significant change in storminess in any season in the Arctic. This does, however, not mean that there are not Arctic re-

gional changes over time, just that they are not captured by Arctic-wide data aggregates (Atkinson, 2005).

Summarizing the large body of literature treating annual cycles and long-term trends at Arctic observatories, we find three main approaches: (i) studies investigated a limited number of aerosol properties across multiple stations for a short period (e.g., the systematic comparison of optical properties (Schmeisser et al., 2018) or BC and SO_4^{2-} (Eckhardt et al., 2015)), (ii) studies focused on one station entirely reporting a large number of parameters for seasonal cycle and trend analyses (e.g., Sharma et al., 2019), or (iii) studies discussed long-term trends of a small number of anthropogenic tracers across multiple stations over different periods (e.g., Quinn et al., 2007; Collaud Coen et al., 2020b). The resulting gaps are a missing pan-Arctic synthesis of anthropogenic and natural seasonal and long-term trend patterns over comparable periods, as well as a joint consideration of chemical and optical aerosol properties and their seasonal and long-term co-evolution.

To close these gaps, here, we discuss seasonal cycles of 9 chemical and 4 optical properties across 10 stations averaged over the same time period, and we derive decadal trends per variable and station, which can be compared to each other. We further include anthropogenic as well as natural aerosol tracers. The purpose of this study is twofold: we aim (i) to reveal similarities and differences in seasonal patterns to highlight the regional nature of the Arctic aerosol regimes, and (ii) to contrast anthropogenic and natural aerosol long-term trends against decreasing anthropogenic emissions and discuss these trends in the context of environmental changes. This study follows chapter 5 of the recently released assessment report of short-lived climate forcers in the Arctic by the Arctic Monitoring and Assessment Programme (AMAP, 2021).

2 Methods

2.1 Data and data treatment

We obtained final, corrected data either from a publicly accessible data repository (EBAS, <http://ebas.nilu.no/>, last access: 27 December 2021) or through personal communication with station PIs (see Table 1). Temporal data resolution varied from hourly for aerosol optical properties to several days for chemical components. Figure 1 shows the location of the 10 observatories where various in situ measurements were conducted. The chemical variables we consider include particulate sulfate (SO_4^{2-}), nitrate (NO_3^-), ammonium (NH_4^+), MSA, sodium (Na^+), non-sea-salt calcium (nssCa^{2+}), non-sea-salt potassium (nssK^+) and iron (Fe). We calculated the nss components Ca^{2+} and K^+ based on their abundance in sea salt relative to the Na^+ concentration (Pilson, 2012). The former can be regarded as tracers for soil dust and the latter for biomass burning (e.g., Sharma et al., 2019). Table 1 gives an overview of the measurement methodol-

ogy for each species at the different sampling sites. We also consider equivalent black carbon (EBC), which was derived from filter absorption measurements, including Aethalometers. The details of conversion from attenuation and absorption measurements are provided in Table 2.

We also report four different optical properties, the scattering (σ_{sp}) and absorption (σ_{ap}) coefficients at 550 nm, single scattering albedo (SSA) at 550 nm, and scattering Ångström exponent at 550/450 (SAE). While the first two variables depend on the total aerosol concentration, i.e., extensive properties, the SSA and SAE are intensive properties which do not depend on loading. The SSA is a measure of how much the aerosol population is able to scatter light relative to the extinction (absorption + scattering), i.e., a value of SSA equal to 1 indicates a purely scattering aerosol. SSA was calculated by dividing the scattering coefficient by the sum of the scattering and absorption coefficients. The SAE describes the wavelength dependence of the aerosol scattering coefficient and can be interpreted as a measure of particle size, where larger particles have smaller SAE values (Delene and Ogren, 2002). We calculated SAE based on the following Eq. (1):

$$\text{SAE} = -\frac{\log(\sigma_{\text{sp}450}) - \log(\sigma_{\text{sp}550})}{\log(\lambda_{450}) - \log(\lambda_{550})} \quad (1)$$

where σ_{sp} is the scattering coefficient at the indicated wavelength (λ). Values below the limit of detection of 0.045 Mm^{-1} for σ_{sp} were not used in the calculation of the SAE since they were found to be close to the detection limit. Table 2 provides details for the conversion to σ_{ap} at 550 nm from other wavelengths.

Not all species are available for every station. Table 1 gives an overview of the variables and the periods for which they were obtained at each station.

In this study, we only used quality-checked and assured data sets from the sources provided in Table 1. EBAS data are level 2, and only data points with a red flag code as given in the EBAS data submission manual (<https://ebas-submit.nilu.no/temps>, last access: 27 December 2021) were omitted. Data from other sources or personal communication are equivalent to EBAS standards.

2.2 Annual cycles and trend calculations

For the annual cycles, we calculated the median and interquartile range from all data points per month for the available periods. To derive the anomaly, we subtracted the overall median value and normalized by the overall interquartile range. The overall values are based on all data entries available for the given time period. They are shown in the box plots in Fig. 2. Note that data for Gruvebadet are available only since 2018 for all winter months.

We derived long-term trends for all variables, where data from at least five consecutive years were available. Trends are calculated for the haze season (January, February, March,

April, JFMA) and the summer season (June, July, August, September, JJAS) following the example of Quinn et al. (2009) for data obtained at Barrow/Utqiagvik. This allows for comparison with previously derived trends for aerosol properties at Arctic stations. The haze season is dominated by anthropogenic emissions, while the summer season reflects a mix of anthropogenic and natural emissions. The seasonal separation hence allows tracking of the evolution of anthropogenic and natural influences more specifically. It also avoids the need for prior deseasonalization, i.e., removal of the seasonal component, of the data. Note that, for MSA, we divided the seasons into April–May and June–August, because there were not enough data above the detection limit before and after. A similar approach to separate data to derive seasonal trends has been introduced by Hirsch et al. (1982). Trend significance was tested with the non-parametric Mann–Kendall test on each season. Non-parametric means that no prior assumption of a specific distribution is necessary. The test has been widely applied to environmental data sets including in the Arctic (Tunved and Ström, 2019; Skov et al., 2020; Heslin-Rees et al., 2020; Collaud Coen et al., 2020b, a), not least because of its non-parametric nature and its tolerance of missing values. The null hypothesis of the test is that no trend exists. We defined a trend to be significant if the p value is smaller than or equal to 0.05 (green dots and upward pointing arrows in Table 3). Trends with a p value between 0.05 and 0.1 are marked orange and larger values (p value >0.1) in red (Fig. 3). The results of the Mann–Kendall test are strongly dependent on autocorrelation, whereby a positive autocorrelation increases the likelihood that a trend is determined when there is none (Kulkarni and von Storch, 1995). To avoid an autocorrelation signal, and to accommodate the highly diverse time resolution of the data set, we calculate seasonal median values. The slopes of the trends were calculated using the Theil–Sen slope estimator, another non-parametric method. Significance and slope were derived for the entire time series and on a decadal basis. Values for specific decades allow for intercomparison between variables and stations. However, decadal values are also given if there are at least five consecutive years of data within a decade. Hence the time periods within decades are not equal in all cases and for all stations. Figure 3 shows with the grey bars for which years which variables are available per station. At Villum, a large time gap exists between 2003 and 2007. We derived trends separately for before and after the gap.

It is important to note that the Mann–Kendall test requires a monotonic trend for the time period over which it is calculated. This is often the case for anthropogenic tracers during the haze season. However, some variables do not show a monotonic behavior. For example, at Alert MSA exhibited a significant negative trend between 1981 and 1999 and a non-significant positive trend thereafter (Sharma et al., 2019). To reflect this, we split the data set and calculated trends separately.

Table 1. Overview over methods applied to derive aerosol properties and the respective data sources. If a manuscript is given as data source, data were obtained in their published form from the authors.

Station	Variables and measurement period	Method	Remark	Data source
Alert	SO_4^{2-} , NH_4^+ , Na^+ , K^+ (1980–2019)	HI-volume sampler, ion chromatography	Total suspended particulates (TSP)	EBAS* Sharma et al. (2019)
	NO_3^- , MSA (1981–2019)			
Barrow/Uqiagvik	EBC (1990–2017)	Aethalometer AE06	880 nm, TSP	EBAS Sharma et al. (2019)
	Ca^{2+} (1980–2012), Fe (1980–2009)	Instrumental neutron activation analysis (INAA), inductively coupled plasma mass spectrometry (ICP-MS)	TSP INAA: 1988–2012 for Ca ICP: 1980–1997 for Ca, 1980–2009 for Fe, data were averaged when both methods are available	Sharma et al. (2019)
	Scattering coefficient (2005–2018)	Nephelometer (TSI 3563)	550 nm, particulate matter < 1 μm (PM ₁)	Sangeeta Sharma, personal communication, 2021
Zeppelin	Absorption coefficient (2005–2018)	Particle soot absorption photometer, continuous light absorption photometer (PSAP/CLAP) 1- λ and 3- λ .	PM ₁	Sangeeta Sharma, personal communication, 2021
	SO_4^{2-} , NO_3^- , NH_4^+ , MSA, Na^+ , K^+ (1998–2014)	Ion chromatography, PM ₁ (supermicron data are also available but were not used here)		Quinn et al. (2007), submicron: https://data.pmel.noaa.gov/pmel/erddap/tabledap/submicron.html (last access: 31 October 2021)
	EBC (1992–2019)	Aethalometer and PSAP	PM ₁₀ , measured or converted to 880 nm, AE8 until 2001, PSAP 1- λ , 2001–2006, PSAP 3- λ 2006–2010, AE31 from 2010–2016, AE33 after 2016	Sharma et al. (2013), and for newer values Elisabeth Andrews, personal communication, 2021
	Scattering coefficient (1978–2020)	Nephelometer (TSI 3563)	550 nm, PM ₁₀	EBAS
Zeppelin	Absorption coefficient (1997–2019)	PSAP, CLAP	PM ₁₀ , 1- λ PSAP 1997–2006 3- λ PSAP 2006–2014 3- λ CLAP 2014–present	EBAS
	SO_4^{2-} , Na^+ , Ca^{2+} (1993–2020) MSA (1990–2004) NH_4^+ , K^+ (2010–2020)	Ion chromatography	PM ₁₀	EBAS
	EBC (2001–2017)	Aethalometer (AE31)	880 nm, TSP	Konstantinos Eleftheriadis, personal communication, 2020 and Eleftheriadis et al. (2009)
Villum	Scattering coefficient (1999–2017)	Nephelometer (TSI 3563)	TSP	Heslin-Rees et al. (2020)
	Absorption coefficient (2001–2017)	PSAP 1- λ	PM ₁₀	EBAS
	SO_4^{2-} , NO_3^- , NH_4^+ , Na^+ , K^+ , Ca^{2+} , Fe (1991–2002; 2007–2017)	Ion chromatography, proton induced X-ray emission (PIXE), ICP-MS	SO_4^{2-} , NO_3^- , NH_4^+ , Na^+ ; Ion chromatography PIXE: 1991–2009 for K^+ , Ca^{2+} , Fe ICP-MS: 2011–2017 for K^+ , Ca^{2+} , Fe TSP	Andreas Massling, personal communication, 2021
Gruvebadet	SO_4^{2-} , NO_3^- , MSA (2010–2019)	Ion chromatography	PM ₁₀	Rita Traversi, personal communication, 2021
	EBC (2010–2020)	PSAP 3- λ	TSP	Becagli et al. (2019, 2016)
	Absorption coefficient (2010–2020)	PSAP 3- λ	TSP	Gilardoni et al. (2020)
Kevo	Scattering coefficient (2010–2020)	Nephelometer 1- λ (530 nm)	TSP	Gilardoni et al. (2020)
	EBC (1965–2010)	Thermal optical methods	TSP	Stefania Gilardoni, personal communication, 2021
	Na^+ , K^+ , Ca^{2+} , MSA, SO_4^{2-} (1964–2010)	Ion chromatography	TSP	Dutkiewicz et al. (2014) this study Laing et al. (2013)

3 Results

3.1 Annual cycles

3.1.1 Chemical composition

Figure 2 shows the statistical distribution of concentrations per chemical species, as box plots for each station on the right side and as monthly anomalies of the normalized concentrations as annual cycles on the left side.

SO_4^{2-} makes up the highest concentrations at each station with medians between 0.1 and $0.3 \mu\text{g m}^{-3}$, followed by Na^+ (0.05 to $0.15 \mu\text{g m}^{-3}$). NH_4^+ , NO_3^- , EBC, Fe and nssCa^{2+} all range between 0.01 and $0.06 \mu\text{g m}^{-3}$. nssK^+ (except for Kevo) and MSA exhibit smaller concentrations between 0.003 and $0.015 \mu\text{g m}^{-3}$. EBC, SO_4^{2-} , NO_3^- and NH_4^+ are typical anthropogenic tracers during the Arctic haze season where the highest levels are observed. Their dominant sources in the mid-latitudes are fossil fuel combustion (EBC, SO_4^{2-} , NO_3^-), residential heating (EBC) and agriculture (NH_4^+) (AMAP, 2015). With regards to EBC, Tiksi (71°N) and Kevo (69.4°N) experience the highest concentrations and the largest variability, likely a result of their proximity to both anthropogenic source regions and potential local influences as well. The annual cycles are similar for all stations showing the typically elevated concentrations during the haze period. However, Zeppelin experiences relatively lower concentrations in January and February. The difference among these stations might be due to the comparison of different years and not necessarily physical aerosol processes. At Summit, which has a different seasonal pattern (notably the absence of winter haze, due to its elevation), EBC peaks later.

Alert, Zeppelin, Barrow/Utqiagvik and Villum are comparable in their SO_4^{2-} concentrations and variability. The four stations show almost identical annual cycles with the characteristic haze peak in late winter/early spring and the minimum in summer. Kevo's annual cycle is very similar to the aforementioned stations; however, absolute concentrations are about a factor of 3 higher. This difference is partly because of its relative vicinity to emission sources, and partly because the time series goes back to the 1960s when concentrations were higher in general. Thule and Gruebadet show a more pronounced relative increase in April. NH_4^+ and SO_4^{2-} are very similar in their annual cycles, which is consistent with the formation of ammonium sulfate or ammonium bisulfate. At Barrow/Utqiagvik NH_4^+ concentrations are roughly twice as high as at Alert, Zeppelin and Villum, indicating higher availability of NH_4^+ and less acidic particles since the SO_4^{2-} concentrations are similar at all three stations. The box and whisker plots at Villum, Zeppelin and Alert are similar. NO_3^- concentrations are higher than those of NH_4^+ at Villum and Zeppelin and variable. This result could be related to atmospheric chemical processes of particulate NO_3^- formation, which depends on the aerosol acidity, water content and am-

Table 1. Continued.

Station	Variables and measurement period	Method	Remark	Data source
Tiksi	EBC (2009–2018)	Aethalometer (AE31)	880 nm, PM_{10}	EBAS
	Scattering coefficient (2015–2020)	Nephelometer (TSI 3563)	550 nm, not controlled humidity, but heated inlet, PM_{10} Note that measurements at ambient humidity >40% might result in larger values compared to RH <40% values.	EBAS
	Absorption coefficient (2009–2018)	Aethalometer (AE31)	PM_{10}	EBAS
Thule	SO_4^{2-} , NO_3^- , MSA (2010–2020)	Ion chromatography	PM_{10}	Beraghfi et al. (2019)
Summit	Scattering coefficient (2012–2020)	Nephelometer (TSI 3563)	550 nm, $\text{PM}_{2.5}$	EBAS
	Absorption coefficient (2011–2020)	CLAP 3- λ	$\text{PM}_{2.5}$	EBAS
Pallas	SO_4^{2-} , NH_4^+ , Na^+ , Ca^{2+} , K^+ (2002–2020), NO_3^- (2013–2020)	Ion chromatography	TSP	EBAS
	Scattering coefficient (2000–2020)	Nephelometer (TSI 3563)	TSP until 2008, from 2008 PM_{10}	EBAS
	Absorption coefficient (2007–2020)	MAAP (Thermo_5012)	PM_{10}	EBAS

* <http://ebas-data.mtu.no/> (last access: 27 December 2021).

Table 2. Conversion factors for absorption coefficients at 550 nm and for the derivation of EBC concentrations.

Station	Absorption coefficient conversion to 550 nm	Instrument used to derive EBC	MAC	C_{ref} value	References for conversions
Alert	PSAP/CLAP: $\lambda = 530$ nm, converted to σ_{ap} at 550 nm assuming an Ångström exponent of 1	Aethalometer, AE06, 880 nm	$19 \text{ m}^2 \text{ g}^{-1}$	no C_{ref} applied	Sharma et al. (2004, 2006, 2013, 2019)
		Aethalometer, AE31 880 nm	$16.6 \text{ m}^2 \text{ g}^{-1}$	no C_{ref} applied	Sharma et al. (2004, 2006, 2013, 2019)
Barrow/Utqiagvik	PSAP: $\lambda = 528$ nm converted to σ_{ap} at 550 nm assuming an Ångström exponent of 1	PSAP 1- λ	$10 \text{ m}^2 \text{ g}^{-1}$		Bond et al. (1999)
	PSAP: $\lambda = 530$ nm converted to σ_{ap} at 550 nm assuming an Ångström exponent of 1	PSAP 3- λ	$10 \text{ m}^2 \text{ g}^{-1}$		Bond et al. (1999); Ogren (2010)
	CLAP: $\lambda = 528$ nm converted to σ_{ap} at 550 nm assuming an Ångström exponent of 1	CLAP 3- λ	$10 \text{ m}^2 \text{ g}^{-1}$		Bond et al. (1999); Ogren (2010)
Zeppelin		Aethalometer, AE 31, 880 nm	$15.9 \text{ m}^2 \text{ g}^{-1}$	no C_{ref} applied	Eleftheriadis et al. (2009)
	PSAP $\lambda = 528$ nm converted to σ_{ap} at 550 nm assuming an Ångström exponent of 1				Bond et al. (1999); Ogren (2010)
Gruvebadet	PSAP $\lambda = 530$ nm converted to σ_{ap} at 550 nm assuming an Ångström exponent of 1	PSAP 3- λ	$10 \text{ m}^2 \text{ g}^{-1}$		This study
Tiksi	Aethalometer AE31, $\lambda = 880$ nm, MAC = $16.6 \text{ m}^2 \text{ g}^{-1}$, $C_{\text{ref}} = 3.5$ for conversion to σ_{ap} at 550	Aethalometer AE 31, 880 nm	$16.6 \text{ m}^2 \text{ g}^{-1}$	no C_{ref} applied	Popovicheva et al. (2019)
Summit	CLAP, $\lambda = 550$ nm	CLAP 3- λ	$10 \text{ m}^2 \text{ g}^{-1}$		Bond et al. (1999); Ogren (2010)
Pallas	MAAP, $\lambda = 637$ nm, converted to σ_{ap} at 550 nm assuming an Ångström exponent of 1				This study

bient temperature (see the discussion of the long-term trends for more details).

The other chemical tracers are less uniformly distributed throughout the year, and there are significant differences among the stations. MSA is an oxidation product formed from DMS, which is derived from marine algae. It is hence associated with the presence of open water (or marginal sea ice zones), nutrients, sunlight and DMS-producing algae as is reflected in the annual cycle. At all stations, a characteristic spring bloom peak in April–May is visible (Becagli et al., 2019; Moffett et al., 2020), except at Kevo where the peak occurs in June–July. In August, Barrow/Utqiagvik features a second and even higher peak, likely influenced by regional phytoplankton blooms (Moffett et al., 2020; Quinn et al., 2002). The other three stations do not show such strong signals, and their highest MSA peaks are confined to spring, when southerly air masses transport MSA from productive waters in the mid-latitudes (Sharma et al., 2019).

Another natural contribution to aerosol is Na^+ , which originates from sea spray and salt-laden blowing snow. The annual cycles at Alert and Barrow/Utqiagvik are similar with the highest concentrations in winter, which is evidence of mixed contributions from blowing snow (Huang and Jaeglé, 2017) and southerly advection of sea spray (Quinn et al., 2002). Zeppelin shows lower enhancement during winter likely because of its elevation (476 m a.s.l.). Villum features an annual cycle very similar to Alert, albeit with less en-

hancement between November and December. Pallas shows a “flat” annual cycle, hence exhibiting less variability, potentially due to the geographic location, while Kevo exhibits a late spring peak.

nssCa^{2+} and Fe have been used as mineral and soil dust tracers by Sharma et al. (2019) for Alert, where they show a spring and autumn peak. The spring peak has been interpreted as long-range-transported dust from Asian deserts based on a Lagrangian model study (Groot Zwaafink et al., 2016), whereas the autumn peak corresponds to minimum snow coverage and hence potential local soil dust sources. The latter could also be the case for Villum for nssCa^{2+} and Fe, where the main peak in nssCa^{2+} occurs in autumn, but the actual source is difficult to pinpoint (Nguyen et al., 2013; Heidam et al., 2004). The peak in Fe at Villum during the haze season could stem from long-range transport of air masses from source regions in the easterly direction, where mineral dust emissions from Asian deserts may play a significant role. Barrow/Utqiagvik exhibits a strong nssCa^{2+} enhancement between January and February, which has been interpreted as a signal of long-range-transported dust from Eurasia (Quinn et al., 2002). At Zeppelin, Kevo and Pallas the annual cycles do not show any pronounced features. Overall, the least similarity is seen in nssCa^{2+} between all stations compared to other tracers.

nssK^+ can be interpreted as a biomass burning tracer originating from domestic wood burning and agricultural or forest

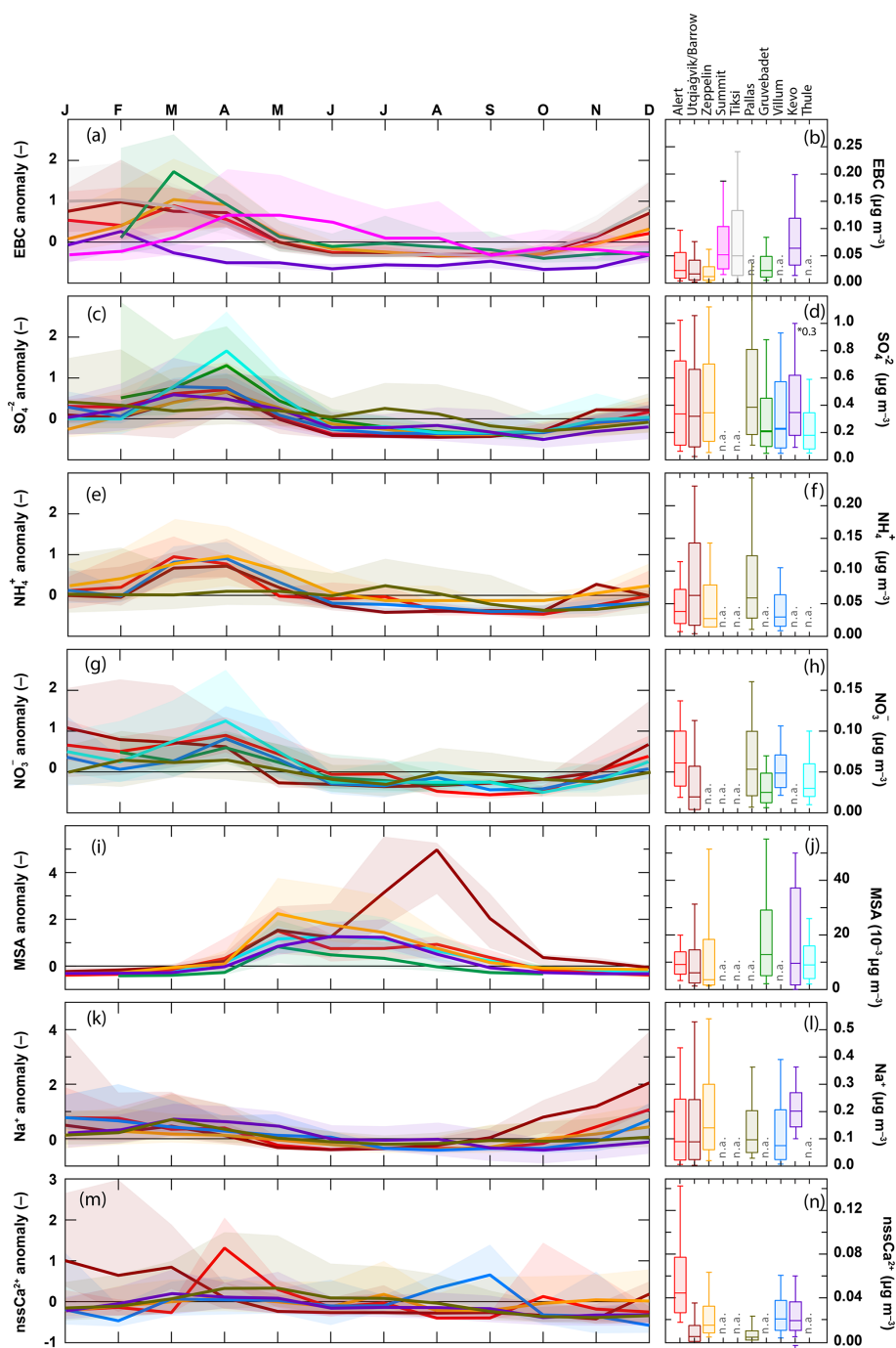


Figure 2.

fires contributing during different times of the year. At Alert and Barrow/Utqiagvik the annual cycle of nssK^+ is similar to that of typical anthropogenic tracers, e.g., EBC, and has been identified as a haze tracer at Barrow/Utqiagvik by Quinn et al. (2002). Based on carbon isotope measurements and Lagrangian dispersion modeling it has been shown that domestic wood burning is an important source of black carbon in winter (Stohl et al., 2013; Winiger et al., 2019). Hence, it is

conceivable that nssK^+ could also be an indication of domestic wood burning. However, at Villum nssK^+ has been found to also potentially originate from fossil fuel burning (Nguyen et al., 2013; Heidam et al., 2004). At Kevo, the annual cycle of the tracer is most similar to SO_4^{2-} , and different from EC. However, previous research has shown that EC and nssK^+ are correlated, and hence wood burning is a likely driver of the signal (Yli-Tuomi et al., 2003b). The seasonal

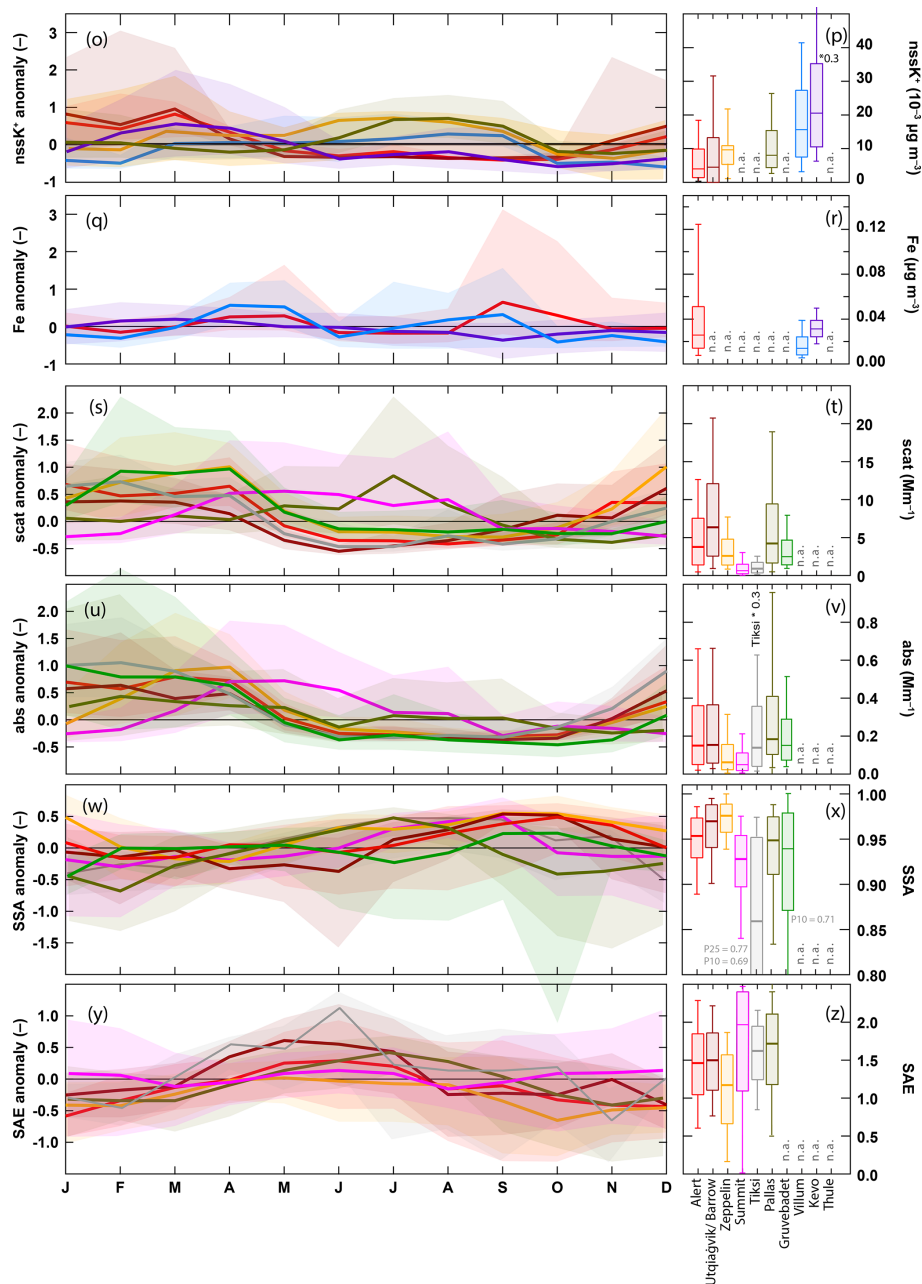


Figure 2. The left column shows annual cycles of aerosol chemical compounds and physical properties for each available data set as anomaly. The data are normalized by the median and interquartile range (see Methods). Colors represent stations given in the right column of the figure (see panel **b**). The right column provides statistical values (median, interquartile range, and 10th and 90th percentiles) per variable and station. Chemical compounds were derived from the following size ranges (see also Table 1): TSP for Alert and Villum, PM_{10} for Zeppelin, and PM_{1} for Barrow/Utqiagvik.

cycle of nssK^+ at Villum shows a late summer enhancement from soil dust (Heidam et al., 2004). At Zeppelin nssK^+ remains enhanced throughout May to September. The presence of nssK^+ and its interpretation as biomass burning marker is in agreement with carbon isotope source apportionment by Winiger et al. (2019), who show an elevated level of 60% biomass burning contribution to black carbon at the station.

It has been shown for Zeppelin that long-range transport of agricultural fires can have a strong impact on the aerosol population in spring (Stohl et al., 2007). At Pallas, nssK^+ does not exhibit a typical Arctic haze pattern, but rather a peak in summer pointing towards wildfires (Mielonen et al., 2010).

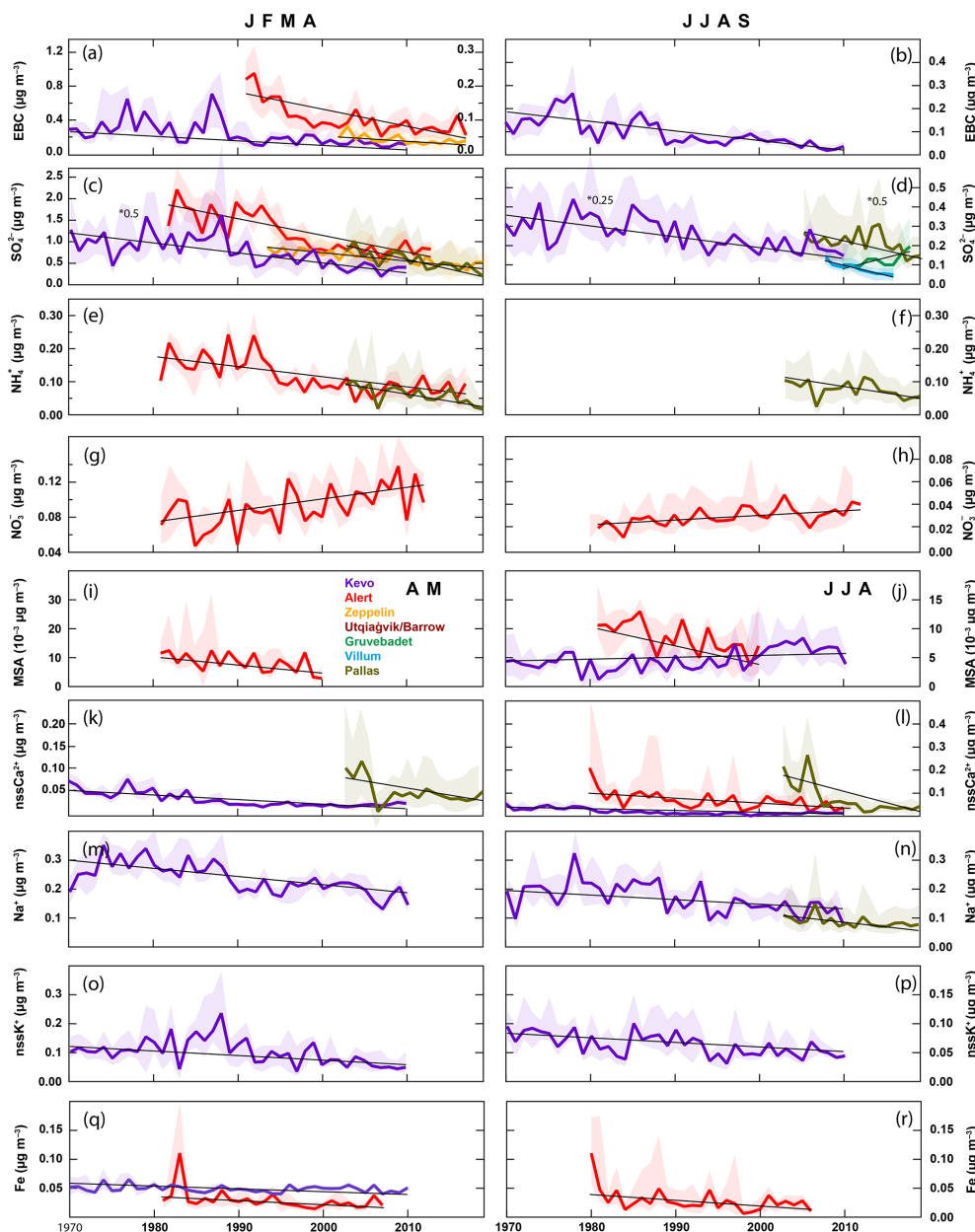


Figure 3.

3.1.2 Optical properties

Figure 2 also shows aerosol optical properties, which are tightly linked to the chemical composition and absolute aerosol mass for the scattering and absorption coefficients. Similar figures showing the absolute values as annual cycles have been discussed in Schmeisser et al. (2018) for data between 2012 and 2014, and by Quinn et al. (2002) and Delene and Ogren (2002) for Barrow/Utqiagvik for 1997 to 2000. Here, we show all data available for this study (see Table 3). The annual cycle of σ_{sp} reflects the higher aerosol burden during the haze season and the low concentrations dur-

ing summer for the observatories at Alert, Barrow/Utqiagvik, Zeppelin, Gruvebadet and Tiksi. The slight decrease in SSA at Gruvebadet in July and August is likely due to the impact of forest fire emissions, as suggested by higher aerosol concentrations of biomass burning tracers in this period of the year (Turetta et al., 2016; Feltracco et al., 2020). Pallas and Summit exhibit an opposite behavior with peak values in spring and summer, respectively. Pallas, being located relatively far south is much more influenced by Eurasian anthropogenic emissions being downwind (easterlies prevail) of significant emission sources (Aaltonen et al., 2006; Asmi et al., 2011) and also by biogenic emissions from the sur-

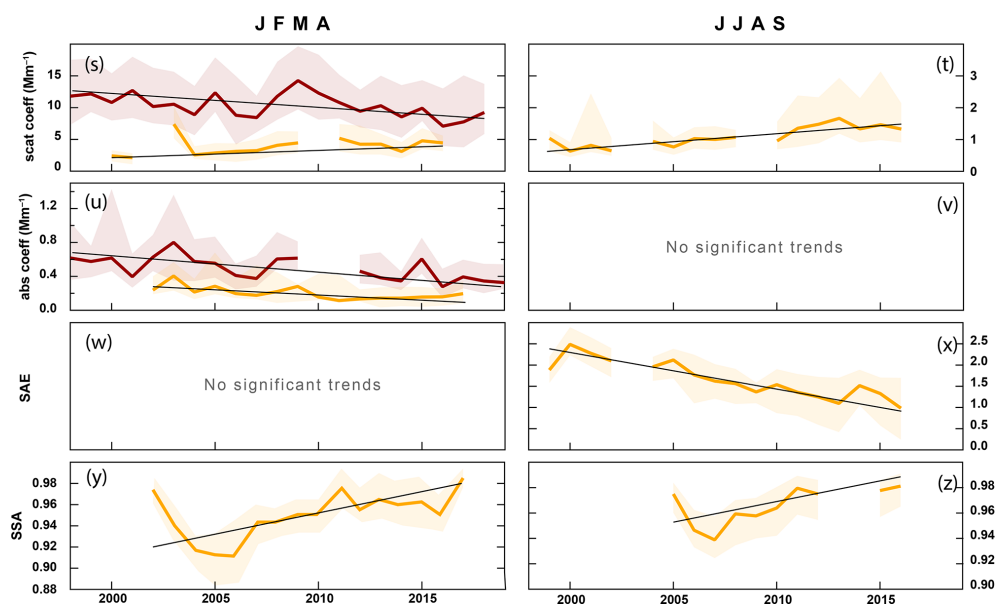


Figure 3. Significant trends ($p < 0.05$) per variable and station for the entire time period over which data are available. For Villum we considered the time period 2008–2016 here. MSA is given for the months of April–May and June–July–August.

rounding boreal forest (Hyvärinen et al., 2011; Tunved et al., 2006). Summit is located at 3238 m a.s.l. and is therefore not affected by winter haze, which manifests itself in the lower layers of the atmosphere. It is, however, subject to long-range transport of biomass burning and anthropogenic emissions during spring and summer (Schmale et al., 2011; Thomas et al., 2017; Stohl et al., 2006). The σ_{ap} is closely related to EBC (and correlated 1 : 1 for all stations where EBC was derived with a uniform mass absorption cross section, except at Kevo where a thermal–optical method was used; see Table 2) and both variables follow a similar annual cycle (Fig. 2a, u) with the maximum values during the haze period at Alert, Barrow/Utqiagvik, Tiksi, Gruvebadet and Zeppelin. Summit shows much lower σ_{ap} values and follows a different annual cycle with a maximum in spring and summer, comparable to the observation of σ_{sp} . Here again, the influence of long-range-transported biomass burning emissions as well as emissions from other anthropogenic sources that can reach Summit throughout spring and summer is evident as well as the absence of haze pollution in winter. SSA, an inherent aerosol property independent of the absolute abundance of aerosol derived for Alert, Barrow/Utqiagvik, Zeppelin, Gruvebadet, Tiksi, Pallas and Summit, peaks in autumn and reflects the minimum in the σ_{ap} during that time of the year. At Pallas SSA peaks earlier in summer than at the other stations and also drops more strongly during winter, likely due to the anthropogenic influence in winter and the stronger boreal forest contribution in summer. The lower SSA at Summit in autumn compared to the other stations has been interpreted by Schmeisser et al. (2018) as a darker background aerosol due to increased local air traffic from the station (despite a pol-

lution sector quality-controlled data product). SAE, another intensive property, behaves similarly at all six stations (Alert, Pallas, Summit, Barrow/Utqiagvik, Tiksi and Zeppelin) with a peak in spring lasting through early summer. Given that larger SAE values are indicative of smaller particle diameters, this behavior is in agreement with the annual cycle of the particle number size distributions as discussed for example in Croft et al. (2016) and Freud et al. (2017) due to the absence of larger submicron modes. During the SAE peak, more frequent new particle formation enhances the Aitken mode population, while regular wet deposition depletes the coarser particles acting as cloud condensation nuclei (Freud et al., 2017).

3.2 Trend calculations based on Mann–Kendall and Theil–Sen’s slope

Tables 3 and 4 give an overview and summary of the calculated trends and their significance for all stations and parameters. The left part of the figure provides the significance of the overall trend as a numeric value and optically by a colored marker (green means significant at a p value < 0.05 ; see Methods) split by haze (JFMA) and summer (JJAS) seasons. An upward- or downward-pointing arrow, only for significant trends, represents the direction of the slope, and the value indicates the change per year in the unit of the variable as indicated in the leftmost column. To the right the duration of the measurements are shown as grey bars, and within each decade the marker and arrow indicate the decadal trends and their significance. Numerical values are given in Supplement Fig. S1. Generally, the optical property records represent the last two decades and are shorter than chemical records at sev-

eral stations, which date back about three decades. For MSA, the record across stations is fragmented, with only Alert, Kevo and Barrow/Utqiagvik providing decadal information.

3.2.1 Long-term trends of SO_4^{2-} , NH_4^+ , NO_3^- and EBC

For the full period of each measurement, during the haze season 30 % of the trends are significant ($p < 0.05$), with 20 negative and 3 positive trends. For the summer, 26 % of overall trends are significant with 14 negative and 5 positive trends. We show all 41 significant trends in Fig. 3. In winter, typical haze tracers such as EBC, SO_4^{2-} and NH_4^+ make up 9 of the 20 significant and full period negative trends at Alert, Zeppelin, Pallas and Kevo. This is consistent with the reduction of air pollution emissions in North America, Europe and Russia, which we show in Fig. 4 based on the ECLIPSEv6b (Höglund-Isaksson et al., 2020) and CMIP6 emission data between 1970 and 2014 (Hoesly et al., 2018). For BC, the emissions data show a gradual decrease from 1970 to 2000 for the Western Arctic (Western Arctic refers to the USA and Canada), while emissions in the Eastern Arctic (Eastern Arctic refers to the Kingdom of Denmark, Finland, Iceland, Norway, the Russian Federation and Sweden) and the rest of Europe show a strong decrease between 1990 and 2000. Asia (Japan, People's Republic of China, Republic of India, Republic of Korea, Republic of Singapore) shows a decrease in the 1990s and a subsequent increase since the early 2000s. The EBC trend at Kevo reflects the sharp decline in 1990, and at Alert most of the EBC concentration decline also happened before 2000, reflecting primarily the economic change in the former Soviet Union (Dutkiewicz et al., 2014; Sharma et al., 2019). However, a significant decadal winter trend is only visible for Alert and Barrow/Utqiagvik in the 1990s. Otherwise, decadal trends are not significant. After the year 2000 emissions declined slightly in the Eastern Arctic and the rest of Europe. In the Western Arctic they slightly increased up until 2005 and then decreased up until 2008 while then staying at the same level. In Asia emissions were on the rise until 2008 and then declined, while in the rest of the world emissions increased. Arctic EBC concentrations, which are mostly impacted by the Eastern and Western Arctic as well as Europe (Backman et al., 2021), show neither a decline nor incline from 2000 onwards during winter.

To demonstrate the influence of short-term variability in the last decade on the significance of trends, we tested the required yearly rate of increase or decrease in EBC concentrations to detect a significant trend (p value < 0.05) within the last 10 or close to 10 years of measurements at the following stations: Alert (2007–2017), Zeppelin (2007–2017), Barrow/Utqiagvik (2009–2019), Gruvebadet (2011–2018), and Tiksi (2010–2018). We calculated the trend line for the years given in parenthesis, de-trended the EBC concentration data with it and then added x_i % of EBC increase per year in steps of 1 (i.e., $x_1 = 1$ %, $x_2 = 2$ % and so on) until the trend emerged as significant. The results for Alert and Zeppelin are

5 % yr^{-1} , for Barrow/Utqiagvik 6 % yr^{-1} , for Tiksi 11 % yr^{-1} , and for Gruvebadet 16 % yr^{-1} . Hence, the present-day short-term variability requires relatively large changes to occur to derive significant trends with the Mann–Kendall Theil–Sen method for time periods less than 10 years. This explains why trends on the order of 1 % or less per year cannot be significant over single decades but are significant over a record of 20 or more years (as for the case of EBC at Zeppelin in winter; see Fig. 3). Therefore, even if none of the EBC trends in the haze season turned out to be significant for the 2010–2019 period (in contrast with previous decades), such “stagnation” must be considered carefully. In addition, detection of a 1 % change would not reflect large changes in air quality. The absence of trend detection over shorter periods also highlights the importance of maintaining monitoring activities at the Arctic observatories in the long run, as decadal changes (occurring over periods of > 10 years) in atmospheric composition can be detected with more statistical certainty.

SO_2 emissions, a precursor to particulate SO_4^{2-} , decreased strongly in Europe and the Western Arctic countries since 1980 due to clean-air policies such as UNECE LRTAP and the US Clean Air Act. SO_2 emissions showed a clear dip between 1990 and 2000 in the Eastern Arctic, probably due to the economic change in the former Soviet Union. Elsewhere emissions increased strongly, except for the late 1990s in Asia. Winter concentration trends at Alert, Kevo and Zeppelin follow the pattern of strong emission decline in the 1990s, showing the strongest decline in this decade and then leveling off. There is only one significant decadal wintertime trend for SO_4^{2-} , which occurred at Alert in the decade of the strongest SO_2 emission reductions, 1990–2000. There are only few observations of NH_4^+ , and only Alert and Pallas show a negative overall trend during the haze season. NH_4^+ forms ammonium bisulfate and, to a lesser extent, ammonium sulfate in the particle phase and hence follows the trend of SO_4^{2-} . This is also observed at the other two stations that measured NH_4^+ , Barrow/Utqiagvik and Villum, but the p values do not indicate significance for the overall period ($0.05 < p$ value < 0.1).

NO_3^- shows an opposing significant trend, i.e., positive, at Alert compared to SO_4^{2-} . The favored partitioning into the particle phase is likely the main reason, as it is for the similar trend observed during summer at Alert. It is important to keep in mind that Alert is the only site where a measurement record longer than 30 years has been acquired. The positive trend at Alert is opposite to the emission reduction efforts of NO_x (see Fig. 4), the precursor to NO_3^- . However, with the reduction in particle acidity, mainly caused by lower emissions of SO_2 and subsequent formation of particulate sulfate, more particulate nitrate can be formed (Sharma et al., 2019). In addition, cold temperatures and high particle water content will favor the partitioning of nitrate into the aerosol phase (Guo et al., 2016; Shah et al., 2018). The analysis of NO_3^- clearly shows that not only emission changes are rele-

Table 4. Summary of derived significant trends per season (JFMA and JJAS) for the full period of each data set and per decade. The percentage of significant (sign.) trends is calculated from the total number of trends (column 2) evaluated for the given time period. There are 26 significant decadal trends.

Period	No. of trends	Total sign.	JFMA			JJAS		
			Sign. pos.	Sign. neg.	Percent sign.	Sign. pos.	Sign. neg.	Percent sign.
Full period	73	41	3	20	30.1 %	5	14	26.0 %
1970	6	1	1	0	16.7 %	0	0	0.0 %
1980	16	1	0	0	0.0 %	0	1	6.3 %
1990	26	5	0	4	15.4 %	0	1	3.8 %
2000	41	10	2	2	9.8 %	3	3	14.6 %
2010	51	9	1	2	5.9 %	3	3	11.8 %

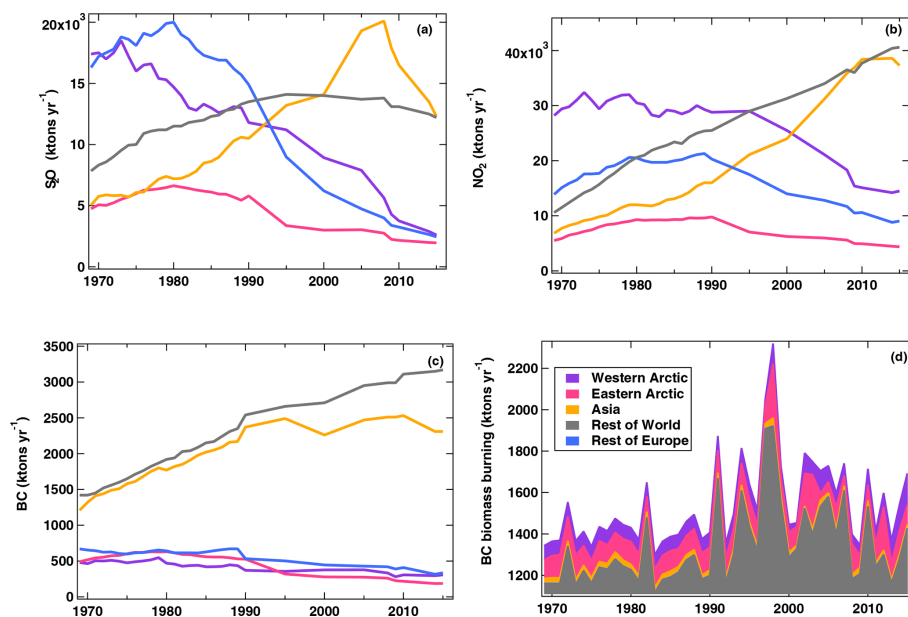


Figure 4. Anthropogenic emissions of SO_2 (a), NO_2 (b), BC (c) and BC from biomass burning (d). Anthropogenic emissions are based on ECLIPSE v6B (Höglund-Isaksson et al., 2020). Data from before 1990 are based on CMIP6 (Hoesly et al., 2018; van Marle et al., 2017) scaled linearly to match ECLIPSE v6B. Biomass burning data are from CMIP6. The Western Arctic region refers to the following countries: USA and Canada; Eastern Arctic region: Kingdom of Denmark, Finland, Iceland, Norway, the Russian Federation and Sweden. The grouping follows the report of the Arctic Monitoring and Assessment Programme on short-lived climate forcers and refers to entire countries (AMAP, 2021).

vant for chemical trends of Arctic aerosols, but also the type of dominating chemical reactions that change due to an altered chemical composition of the atmosphere.

Some of the above discussed tracers also show significant trends during summer for the overall period: five negative and two positive. EBC decreased at Kevo, here again with almost a step change in the 1990s, due to the site's proximity to the former Soviet Union which collapsed in the 1990s. Sulfate decreased significantly at Kevo and Pallas between 2005 and 2020, and Villum over the period from 2008 to 2017. Enhanced microbial activity during the summer has been hypothesized to be a responsible factor for particle mass formation at Villum (Dall'Osto et al., 2018), even though the sum-

mer trend is negative. However, the aforementioned study focused on the smallest particles, while the filter-based determination of SO_4^{2-} targets the accumulation mode and even larger particles. Similar new-particle-formation studies have been conducted for Zeppelin and Gruebadet (Becagli et al., 2019; Dall'Osto et al., 2017; Beck et al., 2020; Dall'Osto et al., 2019), where only at Gruebadet are SO_4^{2-} trends positive and significant during summer. A plausibility check, on whether marine microbial activity is the driving factor, could be done using MSA concentrations. While those are not available at Villum or Gruebadet, no significant trend in MSA has been found at Zeppelin station, close to Gruebadet. The absence of an MSA trend might be an indication

that reaction pathways are too complex to expect a directly measurable concentration effect in both particulate SO_4^{2-} and MSA based on microbial activity. Also note that Villum is dominated by sea ice for 10 months of the year. Mahmood et al. (2019) found that enhanced microbial emissions can lead to higher CCN number concentrations, which implies a subsequent removal of the corresponding emission products by wet deposition and hence might not be observed at permanent stations. The increase in SO_4^{2-} around Svalbard is likely not due to increased shipping activities, e.g., from tourism. Eckhardt et al. (2013) show a strong influence in summer on sulfur from ships directly in Kongsfjorden, but on an annual basis this is a small effect. Moreover, recently new emission regulations require low-sulfur-content fuel.

Generally, observatories that started measurements only after the year 2000 detect neither significant haze nor summer trends for anthropogenic tracers, because most of the air pollution reduction happened prior to that.

3.2.2 Long-term trends of MSA, Na^+ , nssK^+ , nssCa^{2+} and Fe

The other chemical constituents are responsible for 16 significant trends, 7 in winter and 9 in summer. All are negative, except for MSA at Kevo. Focusing on MSA first, at Kevo concentrations started increasing in the 1980s. The significant positive trend has been identified before by Laing et al. (2013), who found significant correlations with both increasing sea surface temperature in the source regions (Barents, Norwegian and Greenland seas) and declining sea ice coverage. Warmer sea water and less sea ice are generally interpreted as leading towards higher marine microbial productivity. Interestingly, at Alert, the concentrations of this ion show negative trends for the haze and summer seasons between 1980 and 1999. Here, the haze season concentrations were related to long-range transport from more southerly latitudes, while the summer season concentrations were related to more regional Arctic ocean sources (Sharma et al., 2019). Hence reasons for the two seasonal trends might be different and could reflect both variability in marine biological activity as well as long-range transport patterns and removal processes en route. Within the decade 2000 to 2010, the summer trend turns significant and positive as discussed in Sharma et al. (2012). The overall trend of MSA at Barrow/Utqiagvik in the haze season is negative for the period between 1998 and 2012 (not shown for reasons discussed below). The summer trend is not significant over this period at this station. Conversely, concentrations increased significantly at Barrow/Utqiagvik during the summer season between 1999 and 2007 as discussed in Quinn et al. (2009). Note that they used July through September for the summer months, while here we use June through August. Calculating trends over the decade 2000 to 2010 hence results in no significant trend at Barrow/Utqiagvik (p value of 0.09 and negative slope). This seeming contradiction is an important

point, because the newly available longer time series shows that Quinn et al. (2009) described a development over a period which happened to show an increase, but which is not necessarily indicative of the longer-term trend. Recently the Barrow/Utqiagvik MSA time series was extended by Mof-fett et al. (2020), who found an overall positive trend for July through September between 1998 and 2017, further underlining the argument that trend calculations over different periods can lead to different results. This is particularly true for MSA concentrations which do not seem to follow a monotonic long-term trend but instead show substantial variability over timescales of 5 to 15 years, which renders the Mann–Kendall approach inappropriate for further investigation.

Na^+ can also be regarded as a natural tracer, i.e., for sea spray its dominant source. No significant positive trend is observed, despite the fact that the potential for more sea spray aerosol formation due to retreating sea ice is often referred to in the literature (Browse et al., 2014; Struthers et al., 2011). However, not observing increased Na^+ concentrations does not mean that there is no enhanced sea spray production. Sea salt particles are efficient CCN and hence may preferentially be removed from the atmosphere by wet deposition as has been shown for other hygroscopic substances (Mahmood et al., 2019), or air mass transport patterns can change (Heslin-Rees et al., 2020).

nssCa^{2+} shows negative trends at Kevo and Pallas during winter and summer. Given the stations' vicinity to industrial emissions in the east and southeast, which have been identified as source regions previously (Yli-Tuomi et al., 2003a; Laing et al., 2014b), the decline could be related to changing industrial activities but warrants more detailed investigation. nssCa^{2+} has also been interpreted as a soluble tracer for mineral and soil dust and shows a negative trend at Alert in summer, which is consistent with the results by Sharma et al. (2019). There is no evident explanation for the decrease, particularly given the decreasing snow cover and potential local sources of dust in late summer (see discussion of annual cycles). Sharma et al. (2019) hypothesize that long-range dust transport could play a role in this context.

Iron is another dust tracer and exhibits a similar annual cycle compared to nssCa^{2+} at Alert, and the summer trend is also negative, supporting the hypothesis of similar sources and/or processes. However, the haze trend of Fe is also negative, while the nssCa^{2+} trend is not significant, indicating that, at least during winter, sources might be different for the two constituents. The shape of the long-term concentration curve of Fe is similar to that of EBC, SO_4^{2-} and NH_4^+ , with the strongest decline in the mid-1990s. Given that Fe is emitted in fossil fuel combustion in addition to originating from soil dust (Matsui et al., 2018), this observation points towards an anthropogenic contribution to Fe observed at Alert. At Kevo, the Fe long-term trend is also negative. Even though Fe trends have not specifically been investigated, Laing et al. (2014a, b) looked at source regions and long-term trends of trace metals at Kevo and found a general significant decline

due to changed industrial activities. It is likely that Fe stems from the same or related sources, because the seasonal cycle is similar to the investigated trace metals.

Only at Kevo were significant and negative trends for nssK^+ found for both the haze and summer seasons. As discussed for the seasonal cycles, this tracer is likely related to decreased domestic wood burning. Given the peak during the haze season, typical for anthropogenic emissions, and the similarity to the EC trend, the source could additionally be related to industrial activity and its decline in the source regions (Dutkiewicz et al., 2014). However, this has not explicitly been investigated.

Given the recent increase in fire activity in the Arctic, one might have expected an emerging trend in nssK^+ as a biomass burning tracer. Reasons for the absence of a general upward trend may be that biomass burning emissions are carried further aloft in the troposphere and are not well captured at the surface, and that station records do not cover the last years, where the strongest emissions in consecutive years occurred (McCarty et al., 2021).

3.2.3 Long-term trends of optical properties

Aerosol optical properties, measured in situ at the surface, have also changed significantly at several stations during the last few decades. Significant trends are observed in the scattering coefficient at Barrow/Utqiagvik and Zeppelin during winter, and at Zeppelin during summer with regard to the overall time period. At Barrow/Utqiagvik, the trend is negative during the haze period for all observations (1998–2019), and for both haze and summer seasons in the recent decade (2010–2019). Note that these overall and recent decreasing trends in scattering coefficient during winter are consistent with Collaud Coen et al. (2020b). However, they did not find a significant trend in scattering coefficient during the summer months at Barrow/Utqiagvik for the most recent decade, though they used different seasonal definitions as well as different time aggregations. The scattering coefficient can be interpreted as a measure of the total measured aerosol concentrations and thus provides evidence of a decline in overall particulate matter, if hygroscopic growth or swelling is prevented through drying particles before measurements, which is the case at the discussed sites. At most stations, Na^+ , SO_4^{2-} and organics make up most of the mass (Petäjä et al., 2020) and are also known to scatter light rather than absorb it. A direct comparison with the aerosol mass is difficult for Barrow/Utqiagvik, because most of the chemical and optical data only overlap between 1997–2013. However, using linear regression Quinn et al. (2002) have shown for data between 1997 and 2000 that Na^+ exerts a dominant role on the winter aerosol scattering coefficient, while SO_4^{2-} dominates the spring scattering. Aerosol filter samples have been taken throughout the full period (1997–present), but data were not available beyond 2013 for this work. Future analysis will help answer the question of whether an anthropogenic or nat-

ural source, or both, contribute to the observed decline. Conversely, at Zeppelin the overall summer and winter trends are positive for σ_{sp} and strongly driven by changes in the decade between 2000 and 2010. The SAE and σ_{sp} trends have been discussed in detail by Heslin-Rees et al. (2020), who found that the increased scattering signal is likely due to an increased presence of coarse-mode particles. This is reflected by the significant negative trend in the SAE (also for both seasons in their publication). While it could be hypothesized that the retreat of sea ice is responsible, Heslin-Rees et al. (2020) found that a change in the atmospheric circulation, in which increased advection of air masses from the southwest, i.e., the Atlantic, can explain the observations. The conclusion is that more sea spray aerosol is transported towards Zeppelin contributing to the increased coarse-mode particles. This is not confirmed by the derived trends of sea-salt particles with the same method (Na^+ ; see previous section). Here trends in Na^+ were not found to be significant for the Zeppelin station. However, the physico-chemical characterization of coarse-mode aerosols at Gruvebadet (Song et al., 2021; Udisti et al., 2016) showed the occurrence of several populations of anthropogenic, sea-salt and crustal particles exhibiting distinct coarse-mode size distributions, which complicates the attribution of trends in SAE to individual changes in emissions.

The absorption coefficient, which is mostly related to the presence of combustion-related aerosol and, to a much lesser extent, to mineral dust, exhibits negative trends for the overall time periods of observations at Barrow/Utqiagvik and Zeppelin in winter, consistent with the wintertime trends for absorption coefficient reported in Collaud Coen et al. (2020b). These trends are in line with the decreasing EBC concentrations during the haze season, where the EBC trend is significant at Zeppelin, while at Barrow/Utqiagvik the p value is 0.09.

Pallas shows a negative decadal trend for SAE between 2000 and 2009 in summer. Collaud Coen et al. (2013) and Lihavainen et al. (2015) showed a significant negative trend for that period in winter, although no significant trend is reported in Collaud Coen et al. (2020b). Thereafter variability has become larger between the years and the amplitude of the signal also increased, for which no particular reason has been found. In contrast, Collaud Coen et al. (2020b) observed both increasing and decreasing statistically significant SAE trends at various Arctic sites depending on the period and season considered.

4 Discussion

The results presented above reflect the effort, which has been made to characterize the aerosol chemical and optical properties across the Arctic over several decades, and they highlight the importance of this long-term effort. Importantly, to obtain a pan-Arctic view, records must be taken over the same pe-

riod of time. Based on the data set behind this study, in the 1980s, on average, measurements of 16 variables (chemical and optical) were carried out each year at any station considered here. In the 1990s the number increased to 31, and further to 58 variables in the 2000s. In the latest decade, annual measurements of 66 variables were available on average. Note that not all data might have been released for the most recent years and hence the number is a lower estimate. We also limited the selection of aerosol variables measured to meet the objectives of the presented study (long-term trends).

The data allow us to draw conclusions on how changes in emissions, processes and transport in the Northern Hemisphere have changed the aerosol properties across the Arctic. Note that the methodology applied here, i.e., the Mann–Kendall significance test and Theil–Sen slope estimator, relies on monotonic change. Hence, time series which do not change monotonically are less likely to exhibit a significant trend (see for example the MSA concentration at Alert). We find in total 41 significant trends over full records, i.e., spanning more than a decade, compared to 26 significant decadal trends (Table 3). The majority of significantly declining trends in anthropogenic tracers occurred during the haze period and was driven by changes in the 1990. Even though the decade from 1990 to 1999 stands out, only 5 of the 26 trends calculated for this decade are significant. This result means that long-term observations that cover multiple decades are extremely valuable and necessary to document the anthropogenic influence on the Arctic aerosol concentration. In addition, it can be concluded that observations which started after the 1990s cannot reflect the most important decline of the anthropogenic aerosol concentration in the Arctic in the recent past. Nevertheless, the more recently established monitoring activities will provide valuable insight into recent trends in the years to come with respect to anthropogenic emission changes within (Kolesar et al., 2017; Aliabadi et al., 2015; Schmale et al., 2018) and outside of the Arctic, as well as to potential changes in natural emissions based on climate feedback mechanisms. For example, we find from the recent records that EBC concentrations appear to be stagnating, i.e., no significant change is observed. Because trends in the latest decade are not significant, continuing observations in the future is critical to understand the present-day development. The newly established time series at additional geographical locations will help evaluate this trend in the future, particularly in light of the current black carbon reduction policies, such as those initiated by the Arctic Council countries through the Fairbanks Declaration 2017 (Arctic Council, 2017), and whether those policies will have an effect across the Arctic.

Anthropogenic influence has not been restricted to the haze season. Several significant negative trends in summer for EBC, SO_4^{2-} and Fe seem to demonstrate this, because there are corresponding negative trends during the haze period as well. With the decline of anthropogenic air pollution, natural aerosol components emerge more strongly now

in summer than previously and are hence responsible for the larger part of the summertime aerosol climate effects, including both the direct and indirect effects. The vanishing anthropogenic summer influence coincides with rapid and unprecedented environmental change in the high northern latitudes. September Arctic sea ice is retreating by 13.1 % per decade since 1979 compared to the 1981–2010 average (Arctic Sea Ice Minimum, 2020). Sea ice retreat creates more open ocean, which creates larger fetch for wave development (Casas-Prat and Wang, 2020) and hence more sea spray emission. DMS emissions have increased by 33 % per decade in ice-free water since 1998 (Galí et al., 2019). Boreal forest fires are also becoming more frequent and severe (Rogers et al., 2020). For example, BC emissions have roughly doubled from 2010 to 2020 from wildfires north of 60° N (McCarty et al., 2021). Warmer temperatures, which are the main cause of enhanced fire activity, also cause enhanced biogenic emissions, such as isoprene (a secondary organic aerosol precursor originating from vegetation; Arneth et al., 2016). These and other ongoing and anticipated environmental changes (e.g., changed wind and air mass transport patterns) will have an effect on the natural contribution to aerosol properties and concentrations (Schmale et al., 2021). However, the trend analyses of natural aerosol tracers used in this study do not show strong or unambiguous evidence for such changes yet. There can be several reasons. With respect to SO_4^{2-} , there could be compensating effects of reduced SO_2 emissions and increased DMS emissions. For example, a high interannual variability in natural sources hinders the detection of long-term trends. Additionally the complex relationships between natural emissions, atmospheric transport, chemical reactions, particle removal processes and observed airborne aerosol concentrations mean that an increase in emissions does not automatically translate to enhanced concentrations of corresponding end products or the species itself. Furthermore, our analyses are conducted with the Mann–Kendall Theil–Sen slope test only. Other methods might yield different results. For example, increased wave breaking on a more ice-free ocean should lead to higher Na^+ concentrations. However, only two of the six stations that report Na^+ show a significant and negative trend in summer at Kevo and Pallas, and winter at Kevo. This could be due to the inherently large variability in the Na^+ signal, which hence requires longer data sets to extract a monotonic signal with the Mann–Kendall Theil–Sen methodology. For Alert, if the Na^+ concentration for the first 5 years of the record and the last 5 years are averaged, there is a 20 % increase in Na^+ . It could also be due to the preferential wet scavenging of Na^+ due to its high hygroscopicity. In addition to the chemical signature, which can document changes in sea spray aerosol, size distribution data can provide indications and improve such analysis. Using the SAE, Heslin-Rees et al. (2020) showed an increase in coarse-mode particles at Zeppelin, which is likely due to an increase in observations of sea spray emissions and atmospheric transport changes. At Zeppelin, the source is the mid-

latitude Atlantic rather than the increasingly ice-free Arctic Ocean. While at Alert, the SAE trend was not found to be significant, it nevertheless has a low p value of 0.09 and a negative slope, which is consistent with the decrease in Na^+ .

Concerning marine biogenic emissions, observations of MSA concentrations provide mixed results. At Kevo the summer concentrations clearly increased since the 1980s, while at Barrow/Utqiagvik the MSA time series from 1997 to 2017 shows an increase (Moffett et al., 2020). Measurements at Alert do not indicate a significant upward trend between 1981 and 2018, but rather a negative trend between 1981 and 1999, and a positive trend in the decade 2000 to 2009 in MSA. Becagli et al. (2019) find a positive trend in the most recent decade at Gruevbadet on Svalbard and a negative one at Thule, Greenland. Our analyses in this study show similar trends for the two latter stations, but no significance. In a modeling study Browse et al. (2014) found that enhanced marine biogenic emissions do contribute to enhanced aerosol concentrations, but they also cause increased wet deposition, such that higher concentrations of marine biogenic tracers might not be measured at the observatories.

Regarding the potential increase in biomass burning aerosol, there is no observatory indicating a significant positive trend in relevant components (e.g., EBC, absorption coefficient, nssK^+). The absence of positive trends might be due to atmospheric transport patterns, meaning observatories might not be located in the regions that are consistently influenced by enhanced biomass burning. Importantly, biomass burning emissions are also ejected higher aloft into the atmosphere, meaning surface stations might not capture these layers due to down-limited mixing in the stratified polar atmosphere. It could also partly be owing to the lack of observations of more specific tracers for biomass burning.

Less snow cover in summer might lead to the hypothesis that enhanced local soil dust emissions can contribute to the aerosol burden at Arctic sites. While soil dust tracer data were available for six stations, none of them showed a significant increase for the overall period, during neither winter nor summer. In contrast, summer nssCa^{2+} declined at Alert, indicating that long-range transport is potentially the more important factor at this station. Moreover, the negative summer trends at Kevo and Pallas and negative winter trend at Kevo might reflect a decline in anthropogenic contributions rather than natural emissions.

The current absence of significant trends in natural aerosol components might be a result of the choice of aerosol tracers measured at the observatories. While MSA is a unique tracer for marine biogenic emissions, and the Na^+ signal is governed by sea salt (Udisti et al., 2016), there is a lack of unique tracers for dust and terrestrial biogenic emissions. Those need to be identified using statistical tools or models. For the latter, observations and speciation of organic aerosol with spatial coverage in the Arctic, and in particular secondary organic aerosol, are desperately needed for better source apportionment (Petäjä et al., 2020; Moschos et al.,

2022b). Analyses based on short-term efforts clearly show the potential of various analysis techniques (mass spectrometry or Fourier transform infrared spectral analysis) to isolate signatures of anthropogenic versus natural organic aerosol contribution (Fu et al., 2009; Kawamura et al., 2010; Leaitch et al., 2018; Willis et al., 2017). Isotopic analyses of carbon, nitrogen and sulfur can also provide more details on sources. This has been demonstrated by carbon isotope analyses on atmospheric and deposited aerosols (Rodríguez et al., 2020; Winiger et al., 2019). Nitrogen isotopic analysis has been used to elucidate the NO_x budget in the Arctic; however, the study was more focused on trace gas chemistry rather than aerosol source apportionment (Morin et al., 2008). Sulfur isotopic analysis has been applied a limited number of times for shorter-term data sets in the Arctic to distinguish anthropogenic, biogenic and sea salt contributions (Ghahremaninezhad et al., 2016; Seguin et al., 2014). This can also be achieved by online mass spectrometry as has been done at Villum (Nielsen et al., 2019). Also, microphysical properties such as particle size distributions can reveal changes that bulk aerosol composition cannot. For example, chemical analyses are mostly mass based, and hence changes in particles with smaller diameters are not well captured by such analysis. Those, however, have already been shown to reflect enhanced contribution of marine biogenic emissions to new particle formation and growth (Dall'Osto et al., 2017; Beck et al., 2020). In addition, optical properties can reflect changes in particle size distributions, for example the SAE at Zeppelin, where the aerosol population seems to evolve in a way that larger particles dominate. While this is attributed to more frequent observations of sea spray from the Atlantic (Heslin-Rees et al., 2020), the chemical measurements of Na^+ at Zeppelin did not capture this change at the 95th percentile significance level. However, a combination of chemical and optical measurements can shed more light on particle origin and driving factors of climate-relevant optical aerosol properties (Quinn et al., 2002). Despite the large data set discussed here, the chemical and optical observations only coincide marginally. Hence, long-term trends of their co-evolution are not investigated, but such a study would provide very useful insights, particularly adding detailed size distribution information.

5 Conclusions and outlook

We presented and analyzed more than 1200 cumulative years of measurements of aerosol chemical and optical properties recorded at 10 surface observatories across the Arctic between 1965 and 2020. Variables include EBC, SO_4^{2-} , NO_3^- , NH_4^+ , MSA, Na^+ , nssCa^{2+} , nssK^+ , Fe, scattering and absorption coefficients, SSA, and SAE (see Tables 1 and 3).

Annual cycles of all variables clearly show that the wintertime is still dominated by anthropogenic haze across the whole Arctic, while the summer is more strongly influ-

enced by natural aerosol components. Significantly decreasing long-term trends of anthropogenic tracers provide evidence of the decline of anthropogenic emissions further south which is observed during the haze season at Arctic sites. The strongest decline in SO_2 and BC emissions took place in the 1990s and is visible in large decreases in particulate sulfate and EBC in the North American and European Arctic. Available data from the Eastern Arctic covers only the most recent decades and hence could not capture the change. In the recent past, EBC concentrations seemed to stagnate or slightly increase (although not significantly at the 95th percentile significance level). We calculated that concentration increases of at least $5\% \text{ yr}^{-1}$ are currently needed to detect a significant trend per decade, due to the interannual variability of EBC concentrations. Lower rates of change are detectable only over longer periods of time. Future data will show whether recent efforts by the Arctic Council members in reducing emissions, particularly of black carbon, are effective (Arctic Council, 2017).

Among all long-term trends, 30% are significant in the haze season where 20 out of 23 show a decline. The three positive trends include NO_3^- at Alert and scattering coefficient as well as SSA at Zeppelin. Despite NO_x emissions decreasing at mid-latitudes, particulate nitrate might increase at Alert due to atmospheric chemical processes favoring nitrate partitioning into particles due to the less acidic aerosol (less sulfate). At Zeppelin the enhanced scattering coefficient comes along with a decrease in the SAE, indicating a stronger contribution of larger particles, i.e., sea spray from the mid-latitude Atlantic (Heslin-Rees et al., 2020).

For the summer period, no uniform picture of trends has emerged. Twenty-six percent of trends, i.e., 19 out of 73, are significant, whereby 5 are positive and 14 negative. Negative trends include not only anthropogenic tracers such as EBC at Kevo, but also natural indicators such as MSA and nssCa^{2+} at Alert. Positive trends are observed for NO_3^- at Alert and SO_4^{2-} at Gruebadet. The latter could be related to enhanced marine biogenic emissions, but analogous significant trends in MSA were not found there. Only at Kevo is the long-term trend significant and positive. Other tracers, such as nssK^+ and Na^+ , which potentially carry natural signals of biomass burning and sea salt, respectively, only show significant trends at Kevo and Pallas, where they are more likely representative of anthropogenic activities. Hence, no clear evidence of a significant change in the natural aerosol contribution can be seen yet, despite the evident sea ice decline, increased DMS, and increased fire and terrestrial vegetation emissions (Arneeth et al., 2016; Galí et al., 2019; Arctic Sea Ice Minimum, 2020; Rogers et al., 2020). This points towards five main action items for monitoring Arctic aerosol.

First, long-term observations targeted at natural aerosol tracers are needed. Increased natural particle and precursor emissions might produce signal enhancements, which are small compared to the inherent natural signal variability.

Hence, new trends might not yet be visible but might emerge in the years to come. They are important indicators of feedback mechanisms in Arctic amplification.

Second, the location of an observatory matters for which trends might emerge as significant or not. Not every observatory will exhibit all types of natural aerosol changes clearly. For example, Becagli et al. (2019) found a difference in MSA trends between Gruebadet and Thule, likely due to different evolution of marine ecosystems. A natural-change hotspot map of the Arctic combined with simulations of atmospheric transport and aerosol processes can suggest areas that require new measurement efforts. Moreover, most stations are located near sea level, and only Summit provides valuable insights into processes further aloft including in the free troposphere. Only comprehensive measurements at all Arctic observatories discussed here, and ideally additional ones in the Eastern Arctic, are able to address the complexity and variability of aerosol sources and processes across the region.

Third, an assessment of whether the currently monitored aerosol properties are appropriate to capture changes in natural aerosol compounds is needed. Source apportionment based on speciated organic aerosol components is currently lacking except for a few short-term case studies (Moschos et al., 2022b). Those together with isotopic analyses of carbon, nitrogen and sulfur can shed light on natural aerosol changes. Microphysical properties such as the size distribution and inherent optical characteristics (e.g., the single scattering albedo and scattering Ångström exponent) can further reveal changes in the number, size and composition and thus origin of particles, which chemical analyses alone, especially of bulk aerosols, cannot. Moreover, aerosol microphysical and optical properties are directly connected to aerosol climate effects.

Fourth, continuing the existing long-term efforts is essential. Only long-term time series can document Arctic change and further our understanding of Arctic climate and biogeochemical processes.

Fifth, standard operation procedures for the measurement of particle properties are needed such that they can be compared (e.g., same cut-off size on the inlets). For optical properties the Global Atmosphere Watch network provides recommendations for harmonized measurements. Furthermore, observatory operators should be encouraged to publish the data in a timely fashion and in established formats (see details in Laj et al., 2020).

In summary, aerosol properties are an important tool to analyze changes in anthropogenic and natural atmospheric chemical influences on the Arctic. Tremendous monitoring efforts have already been conducted, which have helped to understand the implications for past, present and future Arctic climate change. The decision to start regular monitoring of key anthropogenic components in the early 1990s – or even before – turned out to be important and timely, because it enabled us to capture a remarkable change in the concentrations of anthropogenic climate-forcing agents in the Arc-

tic lower atmosphere that occurred in the late twentieth century. Establishing specifically targeted observations for the ongoing and future change of natural aerosols is essential to developing improved scenarios of their climatic and biogeochemical effects on the Arctic. Continuation of the monitoring programs targeting changes in variables during the haze season linked to anthropogenic emissions at mid-latitudes is a prerequisite to give further evidence of the declining trends determined today and for their quantification in global climate and earth system models.

Data availability. Most data are publicly available on <http://ebas-data.nilu.no/> (last access: 27 December 2021) or else on request via the personal communication contacts listed in Table 1. All these contacts are co-authors and in charge of observatory data, which needs to undergo specific control before it can be posted publicly. This publication partly precedes open-access data publication on EBAS. All data will be available via <http://ebas-data.nilu.no/> in the future.

Supplement. The supplement related to this article is available online at: <https://doi.org/10.5194/acp-22-3067-2022-supplement>.

Author contributions. LMU, PKQ, EA, AM, JBP, SaS, SD, KE, PH, JL, JP, HCH, HS, EA, RT, SG and MM processed and analyzed data from observatories. JS, SaS and SD calculated annual cycles and seasonal trends. KvS provided emissions data. JS wrote the manuscript. All authors contributed to interpretation and commented on the manuscript.

Competing interests. The contact author has declared that neither they nor their co-authors have any competing interests.

Disclaimer. Publisher's note: Copernicus Publications remains neutral with regard to jurisdictional claims in published maps and institutional affiliations.

Special issue statement. This article is part of the special issue "Arctic climate, air quality, and health impacts from short-lived climate forcers (SLCFs): contributions from the AMAP Expert Group (ACP/BG inter-journal SI)". It is not associated with a conference.

Acknowledgements. We thank the entire Arctic Monitoring and Assessment Programme Expert Group on Short-lived Climate Forcers for inspiring conversations and feedback. For Alert, authors would like to thank operators, students and technicians for the aerosol program operation, calibration and maintenance of instruments, especially Dan Veber for maintenance of optical and physical measurements instruments and Alina Chivulescu for aerosol sample chemical analysis. We thank CFS Alert for maintenance of

Alert base station. The Villum Foundation is gratefully acknowledged for financing the establishment of the Villum Research Station. Bjarne Jensen, Christel Christoffersen and Keld Mortensen from Aarhus University are gratefully acknowledged for their technical support. Thanks are due to the Royal Danish Air Force and the Arctic Command for providing logistic support to the project. The data from Gruebadet were achieved thanks to Projects PRIN-20092C7KRC001 and RIS 3693 "Gruebadet Atmospheric Laboratory Project (GRUVELAB)" and to the coordination activity of National Council of Research (CNR), which manages the Italian Arctic Station "Dirigibile Italia" through the Institute of Polar Sciences (ISP). For Barrow/Utqiagvik, PMEL would like to thank all of the station operators who have made sample collection possible over the past few years. This is PMEL contribution number 5287. For Barrow/Utqiagvik, Summit and Tiksi the authors would like to thank the operators for the care and feeding of chemical and optical instruments and Derek Hageman for his continued excellence in data acquisition, processing and archiving of data. The Arctic and Antarctic Research Institute (AARI) and the Finnish Meteorological Institute (FMI) are acknowledged for Tiksi measurements and data. FMI is acknowledged for Pallas measurements and data. We thank all who have carried out long-term measurements at Arctic observatories and made the data freely available through EBAS. The authors also thank two anonymous referees for their highly valuable comments.

Financial support. This work received support from the Swiss National Science Foundation (grant no. 200021_188478). Julia Schmale holds the Ingvar Kamprad Chair for Extreme Environments Research sponsored by Ferring Pharmaceuticals. This research has been financially supported by the Danish Environmental Protection Agency and the Danish Energy Agency, with means from MIKA/DANCEA funds for environmental support to the Arctic region (project nos. Danish EPA: MST-113-00-140; Ministry of Climate, Energy, and Utilities: 2018-3767) and ERA-PLANET (The European Network for observing our changing Planet) projects, as well as by iGOSP and iCUPE. Measurements and data evaluation for aerosol optical properties at Barrow/Utqiagvik are supported by Department of Energy/Atmospheric Radiation Measurement User (ANL award no. 0F-60239), measurements at Summit occur under the aegis of NSF and NOAA, and Aethalometer measurements at Tiksi occurred through NOAA cooperation with Roshydromet that ended in 2018. Pallas and Tiksi aerosol measurements are supported by Academy of Finland Flagship funding (grant no. 337552) and by Horizon 2020 ACTRIS IMP project (grant no. 871115). This publication is partially funded by the Cooperative Institute for Climate, Ocean, & Ecosystem Studies (CIOCES) under NOAA Cooperative Agreement NA20OAR4320271, contribution no. 2022-1189.

Review statement. This paper was edited by Lynn M. Russell and reviewed by two anonymous referees.

References

Aaltonen, V., Lihavainen, H., Kerminen, V.-M., Komppula, M., Hatakka, J., Eneroth, K., Kulmala, M., and Viisanen, Y.:

- Measurements of optical properties of atmospheric aerosols in Northern Finland, *Atmos. Chem. Phys.*, 6, 1155–1164, <https://doi.org/10.5194/acp-6-1155-2006>, 2006.
- Aliabadi, A. A., Staebler, R. M., and Sharma, S.: Air quality monitoring in communities of the Canadian Arctic during the high shipping season with a focus on local and marine pollution, *Atmos. Chem. Phys.*, 15, 2651–2673, <https://doi.org/10.5194/acp-15-2651-2015>, 2015.
- AMAP: AMAP Assessment 2006: Acidifying Pollutants, Arctic Haze, and Acidification in the Arctic, Arctic Monitoring and Assessment Programme (AMAP), Oslo, Norway, xii+112 pp., ISBN 82-7971-046-9, <https://www.amap.no/documents/doc/amap-assessment-2006-acidifying-pollutants-arctic-haze-and-acidification-in-the-arctic/91> (last access: 1 March 2022), 2006.
- AMAP: The Impact of Black Carbon on Arctic Climate, edited by: Quinn, P. K., Stohl, A., Arneth, A., Berntsen, T., Burkhardt, J. F., Christensen, J., Flanner, M., Kupiainen, K., Lihavainen, H., Shepherd, M., Shevchenko, V., Skov, H., and Vestreng, V., AMAP Technical Report No. 4 (2011), Arctic Monitoring and Assessment Programme (AMAP), Oslo, 72 pp., ISBN 978-82-7971-069-1, <https://www.amap.no/documents/doc/the-impact-of-black-carbon-on-arctic-climate/746> (last access: 1 March 2022), 2011.
- AMAP: AMAP Assessment 2015: Black carbon and ozone as Arctic climate forcers, Arctic Monitoring and Assessment Programme (AMAP), Oslo, Norway, vii+116 pp., ISBN 978-82-7971-092-9, <https://www.amap.no/documents/doc/amap-assessment-2015-black-carbon-and-ozone-as-arctic-climate-forcers/1299> (last access: 1 March 2022), 2015.
- AMAP: Impacts of Short-lived Climate Forcers on Arctic Climate, Air Quality, and Human Health. Summary for Policy-makers, Arctic Monitoring and Assessment Programme (AMAP), Tromsø, Norway, 20 pp., <https://www.amap.no/documents/doc/impacts-of-short-lived-climate-forcers-on-arctic-climate-air-quality-and-human-health.-summary-for-policy-makers/3512> (last access: 1 March 2022), 2021.
- Arctic Council: Fairbanks Declaration (2017), Arctic Council, Fairbanks, ISBN 978-82-93600-22-0, <http://hdl.handle.net/11374/1910> (last access: 1 March 2022), 2017.
- Arctic Sea Ice Minimum: NASA Global Climate Change, Arctic Sea Ice Extent, <https://climate.nasa.gov/vital-signs/arctic-sea-ice/>, last access: 31 December 2020.
- Arneth, A., Makkonen, R., Olin, S., Paasonen, P., Holst, T., Kajos, M. K., Kulmala, M., Maximov, T., Miller, P. A., and Schurgers, G.: Future vegetation–climate interactions in Eastern Siberia: an assessment of the competing effects of CO₂ and secondary organic aerosols, *Atmos. Chem. Phys.*, 16, 5243–5262, <https://doi.org/10.5194/acp-16-5243-2016>, 2016.
- Arrigo, K. R., Perovich, D. K., Pickart, R. S., Brown, Z. W., van Dijken, G. L., Lowry, K. E., Mills, M. M., Palmer, M. A., Balch, W. M., Bahr, F., Bates, N. R., Benitez-Nelson, C., Bowler, B., Brownlee, E., Ehn, J. K., Frey, K. E., Garelly, R., Laney, S. R., Lubelczyk, L., Mathis, J., Matsuoka, A., Mitchell, B. G., Moore, G. W. K., Ortega-Retuerta, E., Pal, S., Polashenski, C. M., Reynolds, R. A., Schieber, B., Sosik, H. M., Stephens, M., and Swift, J. H.: Massive Phytoplankton Blooms Under Arctic Sea Ice, *Science*, 336, 1408–1408, <https://doi.org/10.1126/science.1215065>, 2012.
- Asmi, A., Wiedensohler, A., Laj, P., Fjaeraa, A.-M., Sellegri, K., Birmili, W., Weingartner, E., Baltensperger, U., Zdimal, V., Zikova, N., Putaud, J.-P., Marinoni, A., Tunved, P., Hansson, H.-C., Fiebig, M., Kivekäs, N., Lihavainen, H., Asmi, E., Ulevicius, V., Aalto, P. P., Swietlicki, E., Kristensson, A., Mihalopoulos, N., Kalivitis, N., Kalapov, I., Kiss, G., de Leeuw, G., Henzing, B., Harrison, R. M., Beddows, D., O’Dowd, C., Jennings, S. G., Flentje, H., Weinhold, K., Meinhardt, F., Ries, L., and Kulmala, M.: Number size distributions and seasonality of submicron particles in Europe 2008–2009, *Atmos. Chem. Phys.*, 11, 5505–5538, <https://doi.org/10.5194/acp-11-5505-2011>, 2011.
- Asmi, E., Kondratyev, V., Brus, D., Laurila, T., Lihavainen, H., Backman, J., Vakkari, V., Aurela, M., Hatakka, J., Viisanen, Y., Uttal, T., Ivakhov, V., and Makshtas, A.: Aerosol size distribution seasonal characteristics measured in Tiksi, Russian Arctic, *Atmos. Chem. Phys.*, 16, 1271–1287, <https://doi.org/10.5194/acp-16-1271-2016>, 2016.
- Atkinson, D. E.: Observed storminess patterns and trends in the circum-Arctic coastal regime, *Geo-Mar. Lett.*, 25, 98–109, <https://doi.org/10.1007/s00367-004-0191-0>, 2005.
- Baccarini, A., Karlsson, L., Dommen, J., Duplessis, P., Vüllers, J., Brooks, I. M., Saiz-Lopez, A., Salter, M., Tjernström, M., Baltensperger, U., Zieger, P., and Schmale, J.: Frequent new particle formation over the high Arctic pack ice by enhanced iodine emissions, *Nat. Commun.*, 11, 4924, <https://doi.org/10.1038/s41467-020-18551-0>, 2020.
- Backman, J., Schmeisser, L., Virkkula, A., Ogren, J. A., Asmi, E., Starkweather, S., Sharma, S., Eleftheriadis, K., Uttal, T., Jefferson, A., Bergin, M., Makshtas, A., Tunved, P., and Fiebig, M.: On Aethalometer measurement uncertainties and an instrument correction factor for the Arctic, *Atmos. Meas. Tech.*, 10, 5039–5062, <https://doi.org/10.5194/amt-10-5039-2017>, 2017.
- Backman, J., Schmeisser, L., and Asmi, E.: Asian Emissions Explain Much of the Arctic Black Carbon Events, *Geophys. Res. Lett.*, 48, e2020GL091913, <https://doi.org/10.1029/2020GL091913>, 2021.
- Barrie, L. A.: Arctic air pollution: An overview of current knowledge, *Atmos. Environ.*, 20, 643–663, [https://doi.org/10.1016/0004-6981\(86\)90180-0](https://doi.org/10.1016/0004-6981(86)90180-0), 1986.
- Becagli, S., Lazzara, L., Marchese, C., Dayan, U., Ascanius, S. E., Cacciani, M., Caiazzo, L., Di Biagio, C., Di Iorio, T., di Sarra, A., Eriksen, P., Fani, F., Giardi, F., Meloni, D., Muscari, G., Pace, G., Severi, M., Traversi, R., and Udisti, R.: Relationships linking primary production, sea ice melting, and biogenic aerosol in the Arctic, *Atmos. Environ.*, 136, 1–15, <https://doi.org/10.1016/j.atmosenv.2016.04.002>, 2016.
- Becagli, S., Amore, A., Caiazzo, L., Iorio, T. D., Sarra, A. D., Lazzara, L., Marchese, C., Meloni, D., Mori, G., Muscari, G., Nuccio, C., Pace, G., Severi, M., and Traversi, R.: Biogenic Aerosol in the Arctic from Eight Years of MSA Data from Ny Ålesund (Svalbard Islands) and Thule (Greenland), *Atmosphere*, 10, 349, <https://doi.org/10.3390/atmos10070349>, 2019.
- Beck, L. J., Sarnela, N., Junninen, H., Hoppe, C. J. M., Garmash, O., Bianchi, F., Riva, M., Rose, C., Peräkylä, O., Wimmer, D., Kausiala, O., Jokinen, T., Ahonen, L., Mikkilä, J., Hakala, J., He, X.-C., Kontkanen, J., Wolf, K. K. E., Cappelletti, D., Mazzola, M., Traversi, R., Petroselli, C., Viola, A. P., Vitale, V.,

- Lange, R., Massling, A., Nøjgaard, J. K., Krejci, R., Karlsson, L., Zieger, P., Jang, S., Lee, K., Vakkari, V., Lampilahti, J., Thakur, R. C., Leino, K., Kangasluoma, J., Duplissy, E.-M., Siivola, E., Marbouti, M., Tham, Y. J., Saiz-Lopez, A., Petäjä, T., Ehn, M., Worsnop, D. R., Skov, H., Kulmala, M., Kerminen, V.-M., and Sipilä, M.: Differing mechanisms of new particle formation at two Arctic sites., *Geophys. Res. Lett.*, 48, e2020GL091334, <https://doi.org/10.1029/2020GL091334>, 2020.
- Bodhaine, B. A. and Dutton, E. G.: A long-term decrease in Arctic haze at Barrow, Alaska, *Geophys. Res. Lett.*, 20, 947–950, <https://doi.org/10.1029/93GL01146>, 1993.
- Bond, T. C., Anderson, T. L., and Campbell, D.: Calibration and Intercomparison of Filter-Based Measurements of Visible Light Absorption by Aerosols, *Aerosol Sci. Tech.*, 30, 582–600, <https://doi.org/10.1080/027868299304435>, 1999.
- Bozem, H., Hoop, P., Kunkel, D., Köllner, F., Schneider, J., Herber, A., Schulz, H., Leaitch, W. R., Aliabadi, A. A., Willis, M. D., Burkart, J., and Abbatt, J. P. D.: Characterization of transport regimes and the polar dome during Arctic spring and summer using in situ aircraft measurements, *Atmos. Chem. Phys.*, 19, 15049–15071, <https://doi.org/10.5194/acp-19-15049-2019>, 2019.
- Browse, J., Carslaw, K. S., Mann, G. W., Birch, C. E., Arnold, S. R., and Leck, C.: The complex response of Arctic aerosol to sea-ice retreat, *Atmos. Chem. Phys.*, 14, 7543–7557, <https://doi.org/10.5194/acp-14-7543-2014>, 2014.
- Casas-Prat, M. and Wang, X. L.: Sea Ice Retreat Contributes to Projected Increases in Extreme Arctic Ocean Surface Waves, *Geophys. Res. Lett.*, 47, e2020GL088100, <https://doi.org/10.1029/2020GL088100>, 2020.
- Collaud Coen, M., Andrews, E., Asmi, A., Baltensperger, U., Bukowiecki, N., Day, D., Fiebig, M., Fjaeraa, A. M., Flentje, H., Hyvärinen, A., Jefferson, A., Jennings, S. G., Kouvarakis, G., Lihavainen, H., Lund Myhre, C., Malm, W. C., Mihapopoulos, N., Molenaar, J. V., O’Dowd, C., Ogren, J. A., Schichtel, B. A., Sheridan, P., Virkkula, A., Weingartner, E., Weller, R., and Laj, P.: Aerosol decadal trends – Part I: In-situ optical measurements at GAW and IMPROVE stations, *Atmos. Chem. Phys.*, 13, 869–894, <https://doi.org/10.5194/acp-13-869-2013>, 2013.
- Collaud Coen, M., Andrews, E., Bigi, A., Martucci, G., Romanens, G., Vogt, F. P. A., and Vuilleumier, L.: Effects of the prewhitening method, the time granularity, and the time segmentation on the Mann–Kendall trend detection and the associated Sen’s slope, *Atmos. Meas. Tech.*, 13, 6945–6964, <https://doi.org/10.5194/amt-13-6945-2020>, 2020a.
- Collaud Coen, M., Andrews, E., Alastuey, A., Arsov, T. P., Backman, J., Brem, B. T., Bukowiecki, N., Couret, C., Eleftheriadis, K., Flentje, H., Fiebig, M., Gysel-Beer, M., Hand, J. L., Hoffer, A., Hooda, R., Hueglin, C., Joubert, W., Keywood, M., Kim, J. E., Kim, S.-W., Labuschagne, C., Lin, N.-H., Lin, Y., Lund Myhre, C., Luoma, K., Lyamani, H., Marinoni, A., Mayol-Bracero, O. L., Mihalopoulos, N., Pandolfi, M., Prats, N., Prenni, A. J., Putaud, J.-P., Ries, L., Reisen, F., Sellegrì, K., Sharma, S., Sheridan, P., Sherman, J. P., Sun, J., Titos, G., Torres, E., Tuch, T., Weller, R., Wiedensohler, A., Zieger, P., and Laj, P.: Multidecadal trend analysis of in situ aerosol radiative properties around the world, *Atmos. Chem. Phys.*, 20, 8867–8908, <https://doi.org/10.5194/acp-20-8867-2020>, 2020b.
- Croft, B., Martin, R. V., Leaitch, W. R., Tunved, P., Breider, T. J., D’Andrea, S. D., and Pierce, J. R.: Processes controlling the annual cycle of Arctic aerosol number and size distributions, *Atmos. Chem. Phys.*, 16, 3665–3682, <https://doi.org/10.5194/acp-16-3665-2016>, 2016.
- Dall’Osto, M., Beddows, D. C. S., Tunved, P., Krejci, R., Ström, J., Hansson, H. C., Yoon, Y. J., Park, K.-T., Becagli, S., Udisti, R., Onasch, T., O’Dowd, C. D., Simó, R., and Harrison, R. M.: Arctic sea ice melt leads to atmospheric new particle formation, *Scientific Reports*, 7, 3318, <https://doi.org/10.1038/s41598-017-03328-1>, 2017.
- Dall’Osto, M., Geels, C., Beddows, D. C. S., Boertmann, D., Lange, R., Nøjgaard, J. K., Harrison, R. M., Simo, R., Skov, H., and Massling, A.: Regions of open water and melting sea ice drive new particle formation in North East Greenland, *Scientific Reports*, 8, 6109, <https://doi.org/10.1038/s41598-018-24426-8>, 2018.
- Dall’Osto, M., Beddows, D. C. S., Tunved, P., Harrison, R. M., Lupi, A., Vitale, V., Becagli, S., Traversi, R., Park, K.-T., Yoon, Y. J., Massling, A., Skov, H., Lange, R., Strom, J., and Krejci, R.: Simultaneous measurements of aerosol size distributions at three sites in the European high Arctic, *Atmos. Chem. Phys.*, 19, 7377–7395, <https://doi.org/10.5194/acp-19-7377-2019>, 2019.
- Delene, D. J. and Ogren, J. A.: Variability of Aerosol Optical Properties at Four North American Surface Monitoring Sites, *Journal of Atmospheric Sciences*, 59, 1135–1150, [https://doi.org/10.1175/1520-0469\(2002\)059<1135:VOAOPA>2.0.CO;2](https://doi.org/10.1175/1520-0469(2002)059<1135:VOAOPA>2.0.CO;2), 2002.
- Dutkiewicz, V. A., DeJulio, A. M., Ahmed, T., Laing, J., Hopke, P. K., Skeie, R. B., Viisanen, Y., Paatero, J., and Husain, L.: Forty-seven years of weekly atmospheric black carbon measurements in the Finnish Arctic: Decrease in black carbon with declining emissions, *J. Geophys. Res.-Atmos.*, 119, 7667–7683, <https://doi.org/10.1002/2014JD021790>, 2014.
- Eckhardt, S., Hermansen, O., Grythe, H., Fiebig, M., Stebel, K., Cassiani, M., Baecklund, A., and Stohl, A.: The influence of cruise ship emissions on air pollution in Svalbard – a harbinger of a more polluted Arctic?, *Atmos. Chem. Phys.*, 13, 8401–8409, <https://doi.org/10.5194/acp-13-8401-2013>, 2013.
- Eckhardt, S., Quennehen, B., Olivieri, D. J. L., Berntsen, T. K., Cherian, R., Christensen, J. H., Collins, W., Crepinsek, S., Daskalakis, N., Flanner, M., Herber, A., Heyes, C., Hodnebrog, Ø., Huang, L., Kanakidou, M., Klimont, Z., Langner, J., Law, K. S., Lund, M. T., Mahmood, R., Massling, A., Myriokefalitakis, S., Nielsen, I. E., Nøjgaard, J. K., Quaas, J., Quinn, P. K., Raut, J.-C., Rumbold, S. T., Schulz, M., Sharma, S., Skeie, R. B., Skov, H., Uttal, T., von Salzen, K., and Stohl, A.: Current model capabilities for simulating black carbon and sulfate concentrations in the Arctic atmosphere: a multi-model evaluation using a comprehensive measurement data set, *Atmos. Chem. Phys.*, 15, 9413–9433, <https://doi.org/10.5194/acp-15-9413-2015>, 2015.
- Eleftheriadis, K., Vratolis, S., and Nyeki, S.: Aerosol black carbon in the European Arctic: Measurements at Zeppelin station, Ny-Ålesund, Svalbard from 1998–2007, *Geophys. Res. Lett.*, 36, L02809, <https://doi.org/10.1029/2008GL035741>, 2009.
- Feltracco, M., Barbaro, E., Tedeschi, S., Spolaor, A., Turetta, C., Vecchiato, M., Morabito, E., Zangrando, R., Barbante, C., and Gambaro, A.: Interannual variability of sugars in Arctic aerosol:

- Biomass burning and biogenic inputs, *Sci. Total Environ.*, 706, 136089, <https://doi.org/10.1016/j.scitotenv.2019.136089>, 2020.
- Fenger, M., Sørensen, L. L., Kristensen, K., Jensen, B., Nguyen, Q. T., Nøjgaard, J. K., Massling, A., Skov, H., Becker, T., and Glasius, M.: Sources of anions in aerosols in northeast Greenland during late winter, *Atmos. Chem. Phys.*, 13, 1569–1578, <https://doi.org/10.5194/acp-13-1569-2013>, 2013.
- Flannigan, M., Stocks, B., Turetsky, M., and Wotton, M.: Impacts of climate change on fire activity and fire management in the circumboreal forest, *Glob. Change Biol.*, 15, 549–560, <https://doi.org/10.1111/j.1365-2486.2008.01660.x>, 2009.
- Freud, E., Krejci, R., Tunved, P., Leaitch, R., Nguyen, Q. T., Massling, A., Skov, H., and Barrie, L.: Pan-Arctic aerosol number size distributions: seasonality and transport patterns, *Atmos. Chem. Phys.*, 17, 8101–8128, <https://doi.org/10.5194/acp-17-8101-2017>, 2017.
- Fu, P. Q., Kawamura, K., Chen, J., and Barrie, L. A.: Isoprene, Monoterpene, and Sesquiterpene Oxidation Products in the High Arctic Aerosols during Late Winter to Early Summer, *Environ. Sci. Technol.*, 43, 4022–4028, <https://doi.org/10.1021/es803669a>, 2009.
- Galí, M., Devred, E., Babin, M., and Lévassieur, M.: Decadal increase in Arctic dimethylsulfide emission, *P. Natl. Acad. Sci. USA*, 116, 19311–19317, <https://doi.org/10.1073/pnas.1904378116>, 2019.
- Ghahremaninezhad, R., Norman, A.-L., Abbatt, J. P. D., Lévassieur, M., and Thomas, J. L.: Biogenic, anthropogenic and sea salt sulfate size-segregated aerosols in the Arctic summer, *Atmos. Chem. Phys.*, 16, 5191–5202, <https://doi.org/10.5194/acp-16-5191-2016>, 2016.
- Gilardoni, S., Lupi, A., Mazzola, M., Cappelletti D. M., Moroni, B., Ferrero, L., Markuszewski, P., Rozwadowska, A., Krejci, R., Zieger, P., Tunved, P., Karlsson, L., Vratolis, S., Eleftheriadis, K., and Viola, A.: Atmospheric black carbon in Svalbard. In *SESS report 2019 – The State of Environmental Science in Svalbard – an annual report* (pp. 196–211), Svalbard Integrated Arctic Earth Observing System, <https://doi.org/10.5281/zenodo.4707201>, 2020.
- Groot Zwaafink, C. D., Grythe, H., Skov, H., and Stohl, A.: Substantial contribution of northern high-latitude sources to mineral dust in the Arctic, *J. Geophys. Res.-Atmos.*, 121, 13678–13697, <https://doi.org/10.1002/2016JD025482>, 2016.
- Gunsch, M. J., Kirpes, R. M., Kolesar, K. R., Barrett, T. E., China, S., Sheesley, R. J., Laskin, A., Wiedensohler, A., Tuch, T., and Pratt, K. A.: Contributions of transported Prudhoe Bay oil field emissions to the aerosol population in Utqiagvik, Alaska, *Atmos. Chem. Phys.*, 17, 10879–10892, <https://doi.org/10.5194/acp-17-10879-2017>, 2017.
- Guo, H., Sullivan, A. P., Campuzano-Jost, P., Schroder, J. C., Lopez-Hilfiker, F. D., Dibb, J. E., Jimenez, J. L., Thornton, J. A., Brown, S. S., Nenes, A., and Weber, R. J.: Fine particle pH and the partitioning of nitric acid during winter in the northeastern United States, *J. Geophys. Res.-Atmos.*, 121, 10355–10376, <https://doi.org/10.1002/2016JD025311>, 2016.
- Heidam, N. Z.: On the origin of the arctic aerosol: A statistical approach, *Atmos. Environ.*, 15, 1421–1427, [https://doi.org/10.1016/0004-6981\(81\)90348-6](https://doi.org/10.1016/0004-6981(81)90348-6), 1981.
- Heidam, N. Z., Wählin, P., and Christensen, J. H.: Tropospheric Gases and Aerosols in Northeast Greenland, 56, 261–278, [https://doi.org/10.1175/1520-0469\(1999\)056<0261:TGAAIN>2.0.CO;2](https://doi.org/10.1175/1520-0469(1999)056<0261:TGAAIN>2.0.CO;2), 1999.
- Heidam, N. Z., Christensen, J., Wählin, P., and Skov, H.: Arctic atmospheric contaminants in NE Greenland: levels, variations, origins, transport, transformations and trends 1990–2001, *Sci. Total Environ.*, 331, 5–28, <https://doi.org/10.1016/j.scitotenv.2004.03.033>, 2004.
- Heslin-Rees, D., Burgos, M., Hansson, H.-C., Krejci, R., Ström, J., Tunved, P., and Zieger, P.: From a polar to a marine environment: has the changing Arctic led to a shift in aerosol light scattering properties?, *Atmos. Chem. Phys.*, 20, 13671–13686, <https://doi.org/10.5194/acp-20-13671-2020>, 2020.
- Hirdman, D., Burkhart, J. F., Sodemann, H., Eckhardt, S., Jefferson, A., Quinn, P. K., Sharma, S., Ström, J., and Stohl, A.: Long-term trends of black carbon and sulphate aerosol in the Arctic: changes in atmospheric transport and source region emissions, *Atmos. Chem. Phys.*, 10, 9351–9368, <https://doi.org/10.5194/acp-10-9351-2010>, 2010a.
- Hirdman, D., Sodemann, H., Eckhardt, S., Burkhart, J. F., Jefferson, A., Mefford, T., Quinn, P. K., Sharma, S., Ström, J., and Stohl, A.: Source identification of short-lived air pollutants in the Arctic using statistical analysis of measurement data and particle dispersion model output, *Atmos. Chem. Phys.*, 10, 669–693, <https://doi.org/10.5194/acp-10-669-2010>, 2010b.
- Hirsch, R. M., Slack, J. R., and Smith, R. A.: Techniques of trend analysis for monthly water quality data, *Water Resour. Res.*, 18, 107–121, <https://doi.org/10.1029/WR018i001p00107>, 1982.
- Hodshire, A. L., Campuzano-Jost, P., Kodros, J. K., Croft, B., Nault, B. A., Schroder, J. C., Jimenez, J. L., and Pierce, J. R.: The potential role of methanesulfonic acid (MSA) in aerosol formation and growth and the associated radiative forcings, *Atmos. Chem. Phys.*, 19, 3137–3160, <https://doi.org/10.5194/acp-19-3137-2019>, 2019.
- Hoesly, R. M., Smith, S. J., Feng, L., Klimont, Z., Janssens-Maenhout, G., Pitkanen, T., Seibert, J. J., Vu, L., Andres, R. J., Bolt, R. M., Bond, T. C., Dawidowski, L., Kholod, N., Kurokawa, J.-I., Li, M., Liu, L., Lu, Z., Moura, M. C. P., O'Rourke, P. R., and Zhang, Q.: Historical (1750–2014) anthropogenic emissions of reactive gases and aerosols from the Community Emissions Data System (CEDS), *Geosci. Model Dev.*, 11, 369–408, <https://doi.org/10.5194/gmd-11-369-2018>, 2018.
- Hoffmann, E. H., Tilgner, A., Schrödner, R., Bräuer, P., Wolke, R., and Herrmann, H.: An advanced modeling study on the impacts and atmospheric implications of multiphase dimethyl sulfide chemistry, *P. Natl. Acad. Sci. USA*, 113, 11776–11781, <https://doi.org/10.1073/pnas.1606320113>, 2016.
- Höglund-Isaksson, L., Gómez-Sanabria, A., Klimont, Z., Rafaj, P., and Schöpp, W.: Technical potentials and costs for reducing global anthropogenic methane emissions in the 2050 timeframe – results from the GAINS model, *Environmental Research Communications*, 2, 025004, <https://doi.org/10.1088/2515-7620/ab7457>, 2020.
- Hopke, P. K., Barrie, L. A., Li, S.-M., Cheng, M.-D., Li, C., and Xie, Y.: Possible sources and preferred pathways for biogenic and non-sea-salt sulfur for the high Arctic, *J. Geophys. Res.-Atmos.*, 100, 16595–16603, <https://doi.org/10.1029/95JD01712>, 1995.
- Huang, J. and Jaeglé, L.: Wintertime enhancements of sea salt aerosol in polar regions consistent with a sea ice source

- from blowing snow, *Atmos. Chem. Phys.*, 17, 3699–3712, <https://doi.org/10.5194/acp-17-3699-2017>, 2017.
- Hyvärinen, A.-P., Kolmonen, P., Kerminen, V.-M., Virkkula, A., Leskinen, A., Komppula, M., Hatakka, J., Burkhardt, J., Stohl, A., Aalto, P., Kulmala, M., Lehtinen, K. E. J., Viisanen, Y., and Lihavainen, H.: Aerosol black carbon at five background measurement sites over Finland, a gateway to the Arctic, *Atmos. Environ.*, 45, 4042–4050, <https://doi.org/10.1016/j.atmosenv.2011.04.026>, 2011.
- Kawamura, K., Kasukabe, H., and Barrie, L. A.: Secondary formation of water-soluble organic acids and alpha-dicarbonyls and their contributions to total carbon and water-soluble organic carbon: Photochemical aging of organic aerosols in the Arctic spring, *J. Geophys. Res.-Atmos.*, 115, D21306, <https://doi.org/10.1029/2010jd014299>, 2010.
- Ke, Z., Wang, Y., Zou, Y., Song, Y., and Liu, Y.: Global Wildfire Plume-Rise Data Set and Parameterizations for Climate Model Applications, *J. Geophys. Res.-Atmos.*, 126, e2020JD033085, <https://doi.org/10.1029/2020JD033085>, 2021.
- Kolesar, K. R., Cellini, J., Peterson, P. K., Jefferson, A., Tuch, T., Birmili, W., Wiedensohler, A., and Pratt, K. A.: Effect of Prudhoe Bay emissions on atmospheric aerosol growth events observed in Utqiagvik (Barrow), Alaska, 152, 146–155, <https://doi.org/10.1016/j.atmosenv.2016.12.019>, 2017.
- Kulkarni, A. and von Storch, H.: Monte Carlo experiments on the effect of serial correlation on the Mann-Kendall test of trend, *Meteorol. Z.*, 4, 82–85, 1995.
- Laing, J. R., Hopke, P. K., Hopke, E. F., Husain, L., Dutkiewicz, V. A., Paatero, J., and Viisanen, Y.: Long-term trends of biogenic sulfur aerosol and its relationship with sea surface temperature in Arctic Finland, *J. Geophys. Res.-Atmos.*, 118, 11770–11776, <https://doi.org/10.1002/2013JD020384>, 2013.
- Laing, J. R., Hopke, P. K., Hopke, E. F., Husain, L., Dutkiewicz, V. A., Paatero, J., and Viisanen, Y.: Long-term particle measurements in Finnish Arctic: Part I – Chemical composition and trace metal solubility, *Atmos. Environ.*, 88, 275–284, <https://doi.org/10.1016/j.atmosenv.2014.03.002>, 2014a.
- Laing, J. R., Hopke, P. K., Hopke, E. F., Husain, L., Dutkiewicz, V. A., Paatero, J., and Viisanen, Y.: Long-term particle measurements in Finnish Arctic: Part II – Trend analysis and source location identification, *Atmos. Environ.*, 88, 285–296, <https://doi.org/10.1016/j.atmosenv.2014.01.015>, 2014b.
- Laj, P., Bigi, A., Rose, C., Andrews, E., Lund Myhre, C., Collaud Coen, M., Lin, Y., Wiedensohler, A., Schulz, M., Ogren, J. A., Fiebig, M., Glib, J., Mortier, A., Pandolfi, M., Petäjä, T., Kim, S.-W., Aas, W., Putaud, J.-P., Mayol-Bracero, O., Keywood, M., Labrador, L., Aalto, P., Ahlberg, E., Alados Arboledas, L., Alastuey, A., Andrade, M., Artñano, B., Ausmeel, S., Arsov, T., Asmi, E., Backman, J., Baltensperger, U., Bastian, S., Bath, O., Beukes, J. P., Brem, B. T., Bukowiecki, N., Conil, S., Couret, C., Day, D., Dayantolis, W., Degorska, A., Eleftheriadis, K., Fetzatiz, P., Favez, O., Flentje, H., Gini, M. I., Gregorič, A., Gysel-Beer, M., Hallar, A. G., Hand, J., Hoffer, A., Hueglin, C., Hooda, R. K., Hyvärinen, A., Kalapov, I., Kalivitis, N., Kasper-Giebl, A., Kim, J. E., Kouvarakis, G., Kranjc, I., Krejci, R., Kulmala, M., Labuschagne, C., Lee, H.-J., Lihavainen, H., Lin, N.-H., Löschau, G., Luoma, K., Marinoni, A., Martins Dos Santos, S., Meinhardt, F., Merkel, M., Metzger, J.-M., Mihalopoulos, N., Nguyen, N. A., Ondracek, J., Pérez, N., Perrone, M. R., Petit, J.-E., Picard, D., Pichon, J.-M., Pont, V., Prats, N., Prenni, A., Reisen, F., Romano, S., Sellegri, K., Sharma, S., Schauer, G., Sheridan, P., Sherman, J. P., Schütze, M., Schwerin, A., Sohm, R., Sorribas, M., Steinbacher, M., Sun, J., Titos, G., Toczko, B., Tuch, T., Tulet, P., Tunved, P., Vakkari, V., Velarde, F., Velasquez, P., Villani, P., Vratolis, S., Wang, S.-H., Weinhold, K., Weller, R., Yela, M., Yus-Diez, J., Zdimal, V., Zieger, P., and Zikova, N.: A global analysis of climate-relevant aerosol properties retrieved from the network of Global Atmosphere Watch (GAW) near-surface observatories, *Atmos. Meas. Tech.*, 13, 4353–4392, <https://doi.org/10.5194/amt-13-4353-2020>, 2020.
- Leaith, W. R., Russell, L. M., Liu, J., Kolonjari, F., Toom, D., Huang, L., Sharma, S., Chivulescu, A., Veber, D., and Zhang, W.: Organic functional groups in the submicron aerosol at 82.5° N, 62.5° W from 2012 to 2014, *Atmos. Chem. Phys.*, 18, 3269–3287, <https://doi.org/10.5194/acp-18-3269-2018>, 2018.
- Lihavainen, H., Hyvärinen, A., Asmi, E., Hatakka, J., and Viisanen, Y.: Long-term variability of aerosol optical properties in northern Finland, *Boreal Environ. Res.*, 20, 526–541, 2015.
- Lohila, A., Penttilä, T., Jortikka, S., Aalto, T., Anttila, P., Asmi, E., Aurela, M., Hatakka, J., Hellén, H., and Henttonen, H.: Preface to the special issue on integrated research of atmosphere, ecosystems and environment at Pallas, *Boreal Environ. Res.*, 4, 431–454, <http://hdl.handle.net/10138/228278> (last access: 8 August 2021), 2015.
- Mahmood, R., von Salzen, K., Flanner, M., Sand, M., Langner, J., Wang, H., and Huang, L.: Seasonality of global and Arctic black carbon processes in the Arctic Monitoring and Assessment Programme models, *J. Geophys. Res.-Atmos.*, 121, 7100–7116, <https://doi.org/10.1002/2016JD024849>, 2016.
- Mahmood, R., von Salzen, K., Norman, A.-L., Galí, M., and Levasseur, M.: Sensitivity of Arctic sulfate aerosol and clouds to changes in future surface seawater dimethylsulfide concentrations, *Atmos. Chem. Phys.*, 19, 6419–6435, <https://doi.org/10.5194/acp-19-6419-2019>, 2019.
- Maslanik, J. A. and Stroeve, J.: Near-Real-Time DMSP SSMIS Daily Polar Gridded Sea Ice Concentrations, Version 1, National Snow and Ice Data Center Distributed Active Archive Center [data set], <https://doi.org/10.5067/U8C09DWVX9LM>, 1999.
- Matsui, H., Mahowald, N. M., Moteki, N., Hamilton, D. S., Ohata, S., Yoshida, A., Koike, M., Scanza, R. A., and Flanner, M. G.: Anthropogenic combustion iron as a complex climate forcer, *Nat. Commun.*, 9, 1593, <https://doi.org/10.1038/s41467-018-03997-0>, 2018.
- May, N. W., Quinn, P. K., McNamara, S. M., and Pratt, K. A.: Multiyear study of the dependence of sea salt aerosol on wind speed and sea ice conditions in the coastal Arctic, *J. Geophys. Res.-Atmos.*, 121, 9208–9219, <https://doi.org/10.1002/2016JD025273>, 2016.
- McCarty, J. L., Aalto, J., Paunu, V.-V., Arnold, S. R., Eckhardt, S., Klimont, Z., Fain, J. J., Evangeliou, N., Venäläinen, A., Tchepakova, N. M., Parfenova, E. I., Kupiainen, K., Soja, A. J., Huang, L., and Wilson, S.: Reviews and syntheses: Arctic fire regimes and emissions in the 21st century, *Biogeosciences*, 18, 5053–5083, <https://doi.org/10.5194/bg-18-5053-2021>, 2021.
- Meier, W. N., Hovelsrud, G. K., van Oort, B. E. H., Key, J. R., Kovacs, K. M., Michel, C., Haas, C., Granskog, M. A., Gerland, S., Perovich, D. K., Makshtas, A., and Reist, J. D.: Arctic sea ice in transformation: A review of recent observed changes and

- impacts on biology and human activity, *Rev. Geophys.*, 52, 185–217, <https://doi.org/10.1002/2013RG000431>, 2014.
- Mielonen, T., Aaltonen, V., Lihavainen, H., Arola, A., Komppula, M., and Kivi, R.: Biomass Burning Aerosols Observed in Northern Finland during the 2010 Wildfires in Russia, *Atmosphere*, 4, 17–34, <https://doi.org/10.3390/atmos4010017>, 2010.
- Moffett, C. E., Barrett, T. E., Liu, J., Gunsch, M. J., Upchurch, L. M., Quinn, P. K., Pratt, K. A., and Sheesley, R. J.: Long-Term Trends for Marine Sulfur Aerosol in the Alaskan Arctic and Relationships With Temperature, *J. Geophys. Res.-Atmos.*, 125, e2020JD033225, <https://doi.org/10.1029/2020JD033225>, 2020.
- Morin, S., Savarino, J., Frey, M. M., Yan, N., Bekki, S., Bottenheim, J. W., and Martins, J. M. F.: Tracing the Origin and Fate of NO_x in the Arctic Atmosphere Using Stable Isotopes in Nitrate, *Science*, 322, 730–732, <https://doi.org/10.1126/science.1161910>, 2008.
- Moschos, V., Schmale, J. K., Aas, W., Becagli, S., Calzolari, G., Eleftheriadis, K., Moffett, C. E., Schnelle-Kreis, J., Severi, M., Sharma, S., Skov, H., Vestenius, M., Zhang, W., Hakola, H., Hellen, H., Huang, L., Jaffrezo, J. L., Massling, A., Nojgaard, J., Petaja, T., Popovicheva, O., Sheesley, R. J., Traversi, R., Yttri, K. E., Prevot, A. S. H., Baltensperger, U., and El Haddad, I.: Elucidating the present-day chemical composition, seasonality and source regions of climate-relevant aerosols across the Arctic land surface, *Environm. Res. Lett.*, 17, 034032, <https://doi.org/10.1088/1748-9326/ac444b>, 2022a.
- Moschos, V., Dzepina, K., Bhattu, D., Lamkaddam, H., Casotto, R., Daellenbach, K. R., Canonaco, F., Aas, W., Becagli, S., Calzolari, G., Eleftheriadis, K., Moffett, C. E., Schnelle-Kreis, J., Severi, M., Sharma, S., Skov, H., Vestenius, M., Zhang, W., Hakola, H., Hellen, H., Huang, L., Jaffrezo, J. L., Massling, A., Nojgaard, J., Petaja, T., Popovicheva, O., Sheesley, R. J., Traversi, R., Yttri, K. E., Schmale, J., Prevot, A. S. H., Baltensperger, U., and El Haddad, I.: Equal abundance of summertime natural and wintertime anthropogenic Arctic organic aerosols, *Nat. Geosci.*, <https://doi.org/10.1038/s41561-021-00891-1>, 2022b.
- Nguyen, Q. T., Skov, H., Sørensen, L. L., Jensen, B. J., Grube, A. G., Massling, A., Glasius, M., and Nøjgaard, J. K.: Source apportionment of particles at Station Nord, North East Greenland during 2008–2010 using COPREM and PMF analysis, *Atmos. Chem. Phys.*, 13, 35–49, <https://doi.org/10.5194/acp-13-35-2013>, 2013.
- Nguyen, Q. T., Glasius, M., Sørensen, L. L., Jensen, B., Skov, H., Birmili, W., Wiedensohler, A., Kristensson, A., Nøjgaard, J. K., and Massling, A.: Seasonal variation of atmospheric particle number concentrations, new particle formation and atmospheric oxidation capacity at the high Arctic site Villum Research Station, Station Nord, *Atmos. Chem. Phys.*, 16, 11319–11336, <https://doi.org/10.5194/acp-16-11319-2016>, 2016.
- Nielsen, I. E., Skov, H., Massling, A., Eriksson, A. C., Dall’Osto, M., Junninen, H., Sarnela, N., Lange, R., Collier, S., Zhang, Q., Cappa, C. D., and Nøjgaard, J. K.: Biogenic and anthropogenic sources of aerosols at the High Arctic site Villum Research Station, *Atmos. Chem. Phys.*, 19, 10239–10256, <https://doi.org/10.5194/acp-19-10239-2019>, 2019.
- Ogren, J. A.: Comment on “Calibration and Intercomparison of Filter-Based Measurements of Visible Light Absorption by Aerosols”, *Aerosol Sci. Tech.*, 44, 589–591, <https://doi.org/10.1080/02786826.2010.482111>, 2010.
- Park, K.-T., Yoon, Y. J., Lee, K., Tunved, P., Krejci, R., Ström, J., Jang, E., Kang, H. J., Jang, S., Park, J., Lee, B. Y., Traversi, R., Becagli, S., and Hermansen, O.: Dimethyl Sulfide-Induced Increase in Cloud Condensation Nuclei in the Arctic Atmosphere, *Global Biogeochem. Cy.*, 35, e2021GB006969, <https://doi.org/10.1029/2021GB006969>, 2021.
- Petäjä, T., Duplissy, E.-M., Tabakova, K., Schmale, J., Altstädter, B., Ancellet, G., Arshinov, M., Balin, Y., Baltensperger, U., Bange, J., Beamish, A., Belan, B., Berchet, A., Bossi, R., Cairns, W. R. L., Ebinghaus, R., El Haddad, I., Ferreira-Araujo, B., Franck, A., Huang, L., Hyvärinen, A., Humbert, A., Kalogridis, A.-C., Konstantinov, P., Lampert, A., MacLeod, M., Magand, O., Mahura, A., Marelle, L., Masloboev, V., Moisseev, D., Moschos, V., Neckel, N., Onishi, T., Osterwalder, S., Ovaska, A., Paasonen, P., Panchenko, M., Pankratov, F., Pernov, J. B., Platys, A., Popovicheva, O., Raut, J.-C., Riandet, A., Sachs, T., Salvadori, R., Salzano, R., Schröder, L., Schön, M., Shevchenko, V., Skov, H., Sonke, J. E., Spolaor, A., Stathopoulos, V. K., Strahlen-dorff, M., Thomas, J. L., Vitale, V., Vratolis, S., Barbante, C., Chabrillat, S., Dommergue, A., Eleftheriadis, K., Heilimo, J., Law, K. S., Massling, A., Noe, S. M., Paris, J.-D., Prévôt, A. S. H., Riipinen, I., Wehner, B., Xie, Z., and Lappalainen, H. K.: Overview: Integrative and Comprehensive Understanding on Polar Environments (iCUPE) – concept and initial results, *Atmos. Chem. Phys.*, 20, 8551–8592, <https://doi.org/10.5194/acp-20-8551-2020>, 2020.
- Pilson, M. E.: *An Introduction to the Chemistry of the Sea*, 2nd edn., Cambridge University Press, ISBN 9781139047203, <https://doi.org/10.1017/CBO9781139047203>, 2012.
- Platt, S. M., Hov, Ø., Berg, T., Breivik, K., Eckhardt, S., Eleftheriadis, K., Evangeliou, N., Fiebig, M., Fisher, R., Hansen, G., Hansson, H.-C., Heintzenberg, J., Hermansen, O., Heslin-Rees, D., Holmén, K., Hudson, S., Kallenborn, R., Krejci, R., Krognest, T., Larssen, S., Lowry, D., Lund Myhre, C., Lunder, C., Nisbet, E., Nizetto, P. B., Park, K.-T., Pedersen, C. A., Aspö Pfaffhuber, K., Röckmann, T., Schmidbauer, N., Solberg, S., Stohl, A., Ström, J., Svendby, T., Tunved, P., Tørnkviist, K., van der Veen, C., Vratolis, S., Yoon, Y. J., Yttri, K. E., Zieger, P., Aas, W., and Tørseth, K.: Atmospheric composition in the European Arctic and 30 years of the Zeppelin Observatory, Ny-Ålesund, *Atmos. Chem. Phys. Discuss.* [preprint], <https://doi.org/10.5194/acp-2021-505>, in review, 2021.
- Polissar, A. V., Hopke, P. K., and Harris, J. M.: Source Regions for Atmospheric Aerosol Measured at Barrow, Alaska, *Environ. Sci. Technol.*, 35, 4214–4226, <https://doi.org/10.1021/es0107529>, 2001.
- Popovicheva, O., Diapouli, E., Makshtas, A., Shonija, N., Manousakas, M., Saraga, D., Uttal, T., and Eleftheriadis, K.: East Siberian Arctic background and black carbon polluted aerosols at HMO Tiksi, *Sci. Total Environ.*, 655, 924–938, <https://doi.org/10.1016/j.scitotenv.2018.11.165>, 2019.
- Quinn, P. K., Miller, T. L., Bates, T. S., Ogren, J. A., Andrews, E., and Shaw, G. E.: A 3-year record of simultaneously measured aerosol chemical and optical properties at Barrow, Alaska, *J. Geophys. Res.-Atmos.*, 107, 4130, <https://doi.org/10.1029/2001jd001248>, 2002.
- Quinn, P. K., Shaw, G., Andrews, E., Dutton, E. G., Ruoho-Airola, T., and Gong, S. L.: Arctic haze: current trends and knowl-

- edge gaps, *Tellus B*, 59, 99–114, <https://doi.org/10.1111/j.1600-0889.2006.00238.x>, 2007.
- Quinn, P. K., Bates, T. S., Schulz, K., and Shaw, G. E.: Decadal trends in aerosol chemical composition at Barrow, Alaska: 1976–2008, *Atmos. Chem. Phys.*, 9, 8883–8888, <https://doi.org/10.5194/acp-9-8883-2009>, 2009.
- Radke, L. F., Hobbs, P. V., and Pinnons, J. E.: Observations of Cloud Condensation Nuclei, Sodium-Containing Particles, Ice Nuclei and the Light-Scattering Coefficient Near Barrow, Alaska, *J. Appl. Meteorol. Clim.*, 15, 982–995, [https://doi.org/10.1175/1520-0450\(1976\)015<0982:OOCNS>2.0.CO;2](https://doi.org/10.1175/1520-0450(1976)015<0982:OOCNS>2.0.CO;2), 1976.
- Rémy, S., Veira, A., Paugam, R., Sofiev, M., Kaiser, J. W., Marengo, F., Burton, S. P., Benedetti, A., Engelen, R. J., Ferrare, R., and Hair, J. W.: Two global data sets of daily fire emission injection heights since 2003, *Atmos. Chem. Phys.*, 17, 2921–2942, <https://doi.org/10.5194/acp-17-2921-2017>, 2017.
- Rigét, F., Bignert, A., Braune, B., Dam, M., Dietz, R., Evans, M., Green, N., Gunnlaugsdóttir, H., Hoydal, K. S., Kucklick, J., Letcher, R., Muir, D., Schuur, S., Sonne, C., Stern, G., Tomy, G., Vorkamp, K., and Wilson, S.: Temporal trends of persistent organic pollutants in Arctic marine and freshwater biota, *Sci. Total Environ.*, 649, 99–110, <https://doi.org/10.1016/j.scitotenv.2018.08.268>, 2019.
- Rinke, A., Cassano, J. J., Cassano, E. N., Jaiser, R., and Handorf, D.: Meteorological conditions during the MOSAiC expedition: Normal or anomalous?, *Elementa: Science of the Anthropocene*, 9, 00023, <https://doi.org/10.1525/elementa.2021.00023>, 2021.
- Rodríguez, B. T., Huang, L., Santos, G. M., Zhang, W., Vetro, V., Xu, X., Kim, S., and Czimeczik, C. I.: Seasonal Cycle of Isotope-Based Source Apportionment of Elemental Carbon in Airborne Particulate Matter and Snow at Alert, Canada, *J. Geophys. Res.-Atmos.*, 125, e2020JD033125, <https://doi.org/10.1029/2020JD033125>, 2020.
- Rogers, B. M., Balch, J. K., Goetz, S. J., Lehmann, C. E. R., and Turetsky, M.: Focus on changing fire regimes: interactions with climate, ecosystems, and society, *Environ. Res. Lett.*, 15, 030201, <https://doi.org/10.1088/1748-9326/ab6d3a>, 2020.
- Sand, M., Berntsen, T. K., von Salzen, K., Flanner, M. G., Langner, J., and Victor, D. G.: Response of Arctic temperature to changes in emissions of short-lived climate forcers, *Nat. Clim. Change*, 6, 286–289, <https://doi.org/10.1038/nclimate2880>, 2015.
- Schmale, J. and Baccarini, A.: Progress in Unravelling Atmospheric New Particle Formation and Growth across the Arctic, *Geophys. Res. Lett.*, 48, e2021GL094198, <https://doi.org/10.1029/2021GL094198>, 2021.
- Schmale, J., Schneider, J., Ancellet, G., Quennehen, B., Stohl, A., Sodemann, H., Burkhardt, J. F., Hamburger, T., Arnold, S. R., Schwarzenboeck, A., Borrmann, S., and Law, K. S.: Source identification and airborne chemical characterisation of aerosol pollution from long-range transport over Greenland during POLAR-CAT summer campaign 2008, *Atmos. Chem. Phys.*, 11, 10097–10123, <https://doi.org/10.5194/acp-11-10097-2011>, 2011.
- Schmale, J., Arnold, S. R., Law, K. S., Thorp, T., Anenberg, S., Simpson, W. R., Mao, J., and Pratt, K. A.: Local Arctic Air Pollution: A Neglected but Serious Problem, *Earth's Future*, 6, 1385–1412, 2018.
- Schmale, J., Zieger, P., and Ekman, A. M. L.: Aerosols in current and future Arctic climate, *Nat. Clim. Change*, 11, 95–105, <https://doi.org/10.1038/s41558-020-00969-5>, 2021.
- Schmeisser, L., Backman, J., Ogren, J. A., Andrews, E., Asmi, E., Starkweather, S., Uttal, T., Fiebig, M., Sharma, S., Eleftheriadis, K., Vratolis, S., Bergin, M., Tunved, P., and Jefferson, A.: Seasonality of aerosol optical properties in the Arctic, *Atmos. Chem. Phys.*, 18, 11599–11622, <https://doi.org/10.5194/acp-18-11599-2018>, 2018.
- Schnell, R. C.: Arctic haze and the Arctic Gas and Aerosol Sampling Program (AGASP), *Geophys. Res. Lett.*, 11, 361–364, 1984.
- Seguin, A. M., Norman, A.-L., and Barrie, L.: Evidence of sea ice source in aerosol sulfate loading and size distribution in the Canadian High Arctic from isotopic analysis, *J. Geophys. Res.-Atmos.*, 119, 1087–1096, <https://doi.org/10.1002/2013JD020461>, 2014.
- Serreze, M. C. and Barry, R. G.: Processes and impacts of Arctic amplification: A research synthesis, *Global Planet. Change*, 77, 85–96, <https://doi.org/10.1016/j.gloplacha.2011.03.004>, 2011.
- Shah, V., Jaeglé, L., Thornton, J. A., Lopez-Hilfiker, F. D., Lee, B. H., Schroder, J. C., Campuzano-Jost, P., Jimenez, J. L., Guo, H., Sullivan, A. P., Weber, R. J., Green, J. R., Fiddler, M. N., Bililign, S., Campos, T. L., Stell, M., Weinheimer, A. J., Montzka, D. D., and Brown, S. S.: Chemical feedbacks weaken the wintertime response of particulate sulfate and nitrate to emissions reductions over the eastern United States, *P. Natl. Acad. Sci. USA*, 115, 8110–8115, <https://doi.org/10.1073/pnas.1803295115>, 2018.
- Sharma, S., Lavoué, D., Cachier, H., Barrie, L. A., and Gong, S. L.: Long-term trends of the black carbon concentrations in the Canadian Arctic, *J. Geophys. Res.-Atmos.*, 109, D15203, <https://doi.org/10.1029/2003JD004331>, 2004.
- Sharma, S., Andrews, E., Barrie, L. A., Ogren, J. A., and Lavoué, D.: Variations and sources of the equivalent black carbon in the high Arctic revealed by long-term observations at Alert and Barrow: 1989–2003, *J. Geophys. Res.-Atmos.*, 111, D14208, <https://doi.org/10.1029/2005JD006581>, 2006.
- Sharma, S., Chan, E., Ishizawa, M., Toom-Sauntry, D., Gong, S. L., Li, S. M., Tarasick, D. W., Leaitch, W. R., Norman, A., Quinn, P. K., Bates, T. S., Levasseur, M., Barrie, L. A., and Maenhaut, W.: Influence of transport and ocean ice extent on biogenic aerosol sulfur in the Arctic atmosphere, *J. Geophys. Res.-Atmos.*, 117, D12209, <https://doi.org/10.1029/2011JD017074>, 2012.
- Sharma, S., Ishizawa, M., Chan, D., Lavoué, D., Andrews, E., Eleftheriadis, K., and Maksyutov, S.: 16-year simulation of Arctic black carbon: Transport, source contribution, and sensitivity analysis on deposition, *J. Geophys. Res.-Atmos.*, 118, 943–964, <https://doi.org/10.1029/2012JD017774>, 2013.
- Sharma, S., Barrie, L. A., Magnusson, E., Brattström, G., Leaitch, W. R., Steffen, A., and Landsberger, S.: A Factor and Trends Analysis of Multidecadal Lower Tropospheric Observations of Arctic Aerosol Composition, Black Carbon, Ozone, and Mercury at Alert, Canada, *J. Geophys. Res.-Atmos.*, 124, 14133–14161, <https://doi.org/10.1029/2019JD030844>, 2019.
- Shaw, G. E.: The arctic haze phenomenon, *B. Am. Meteorol. Soc.*, 76, 2403–2413, 1995.
- Shindell, D. T., Chin, M., Dentener, F., Doherty, R. M., Faluvegi, G., Fiore, A. M., Hess, P., Koch, D. M., MacKenzie, I. A., Sanderson, M. G., Schultz, M. G., Schulz, M., Stevenson, D.

- S., Teich, H., Textor, C., Wild, O., Bergmann, D. J., Bey, I., Bian, H., Cuvelier, C., Duncan, B. N., Folberth, G., Horowitz, L. W., Jonson, J., Kaminski, J. W., Marmer, E., Park, R., Pringle, K. J., Schroeder, S., Szopa, S., Takemura, T., Zeng, G., Keating, T. J., and Zuber, A.: A multi-model assessment of pollution transport to the Arctic, *Atmos. Chem. Phys.*, 8, 5353–5372, <https://doi.org/10.5194/acp-8-5353-2008>, 2008.
- Skov, H., Hjorth, J., Nordström, C., Jensen, B., Christoffersen, C., Bech Poulsen, M., Baldtzer Liisberg, J., Beddows, D., Dall'Osto, M., and Christensen, J. H.: Variability in gaseous elemental mercury at Villum Research Station, Station Nord, in North Greenland from 1999 to 2017, *Atmos. Chem. Phys.*, 20, 13253–13265, <https://doi.org/10.5194/acp-20-13253-2020>, 2020.
- Song, C., Dall'Osto, M., Lupi, A., Mazzola, M., Traversi, R., Becagli, S., Gilardoni, S., Vratolis, S., Yttri, K. E., Beddows, D. C. S., Schmale, J., Brean, J., Kramawijaya, A. G., Harrison, R. M., and Shi, Z.: Differentiation of coarse-mode anthropogenic, marine and dust particles in the High Arctic islands of Svalbard, *Atmos. Chem. Phys.*, 21, 11317–11335, <https://doi.org/10.5194/acp-21-11317-2021>, 2021.
- Stohl, A.: Characteristics of atmospheric transport into the Arctic troposphere, *J. Geophys. Res.-Atmos.*, 111, D11306, <https://doi.org/10.1029/2005jd006888>, 2006.
- Stohl, A., Andrews, E., Burkhardt, J. F., Forster, C., Herber, A., Hoch, S. W., Kowal, D., Lunder, C., Mefford, T., Ogren, J. A., Sharma, S., Spichtinger, N., Stebel, K., Stone, R., Strom, J., Tørseth, K., Wehrli, C., and Yttri, K. E.: Pan-Arctic enhancements of light absorbing aerosol concentrations due to North American boreal forest fires during summer 2004, *J. Geophys. Res.-Atmos.*, 111, D22214, <https://doi.org/10.1029/2006jd007216>, 2006.
- Stohl, A., Berg, T., Burkhardt, J. F., Fjæraa, A. M., Forster, C., Herber, A., Hov, Ø., Lunder, C., McMillan, W. W., Oltmans, S., Shiobara, M., Simpson, D., Solberg, S., Stebel, K., Ström, J., Tørseth, K., Treffeisen, R., Virkkunen, K., and Yttri, K. E.: Arctic smoke – record high air pollution levels in the European Arctic due to agricultural fires in Eastern Europe in spring 2006, *Atmos. Chem. Phys.*, 7, 511–534, <https://doi.org/10.5194/acp-7-511-2007>, 2007.
- Stohl, A., Klimont, Z., Eckhardt, S., Kupiainen, K., Shevchenko, V. P., Kopeikin, V. M., and Novigatsky, A. N.: Black carbon in the Arctic: the underestimated role of gas flaring and residential combustion emissions, *Atmos. Chem. Phys.*, 13, 8833–8855, <https://doi.org/10.5194/acp-13-8833-2013>, 2013.
- Struthers, H., Ekman, A. M. L., Glantz, P., Iversen, T., Kirkevåg, A., Mårtensson, E. M., Seland, Ø., and Nilsson, E. D.: The effect of sea ice loss on sea salt aerosol concentrations and the radiative balance in the Arctic, *Atmos. Chem. Phys.*, 11, 3459–3477, <https://doi.org/10.5194/acp-11-3459-2011>, 2011.
- Sturges, W. T. and Barrie, L. A.: Stable lead isotope ratios in arctic aerosols: evidence for the origin of arctic air pollution, *Atmos. Environ.*, 23, 2513–2519, [https://doi.org/10.1016/0004-6981\(89\)90263-1](https://doi.org/10.1016/0004-6981(89)90263-1), 1989.
- Thomas, J. L., Polashenski, C. M., Soja, A. J., Marelle, L., Casey, K. A., Choi, H. D., Raut, J. C., Wiedinmyer, C., Emmons, L. K., Fast, J. D., Pelon, J., Law, K. S., Flanner, M. G., and Dibb, J. E.: Quantifying black carbon deposition over the Greenland ice sheet from forest fires in Canada, *Geophys. Res. Lett.*, 44, 7965–7974, <https://doi.org/10.1002/2017GL073701>, 2017.
- Traversi, R., Becagli, S., Caiazzo, L., Mazzola, M., Lupi, A., Fiebig, M., Hermansen, O., and Krejci, R.: Arctic haze in a climate changing world: the 2010–2020 trend (HAZECLIC), Zenodo [data set], <https://doi.org/10.5281/zenodo.4293826>, 2021.
- Tunved, P. and Ström, J.: On the seasonal variation in observed size distributions in northern Europe and their changes with decreasing anthropogenic emissions in Europe: climatology and trend analysis based on 17 years of data from Aspöreten, Sweden, *Atmos. Chem. Phys.*, 19, 14849–14873, <https://doi.org/10.5194/acp-19-14849-2019>, 2019.
- Tunved, P., Hansson, H.-C., Kulmala, M., Aalto, P., Viisanen, Y., Karlsson, H., Kristensson, A., Swietlicki, E., Dal Maso, M., Ström, J., and Komppula, M.: One year boundary layer aerosol size distribution data from five nordic background stations, *Atmos. Chem. Phys.*, 3, 2183–2205, <https://doi.org/10.5194/acp-3-2183-2003>, 2003.
- Tunved, P., Hansson, H.-C., Kerminen, V.-M., Ström, J., Maso, M. D., Lihavainen, H., Viisanen, Y., Aalto, P. P., Komppula, M., and Kulmala, M.: High Natural Aerosol Loading over Boreal Forests, *Science*, 312, 261–263, <https://doi.org/10.1126/science.1123052>, 2006.
- Turetta, C., Zangrando, R., Barbaro, E., Gabrieli, J., Scalabrin, E., Zennaro, P., Gambaro, A., Toscano, G., and Barbante, C.: Water-soluble trace, rare earth elements and organic compounds in Arctic aerosol, *Rendiconti Lincei*, 27, 95–103, <https://doi.org/10.1007/s12210-016-0518-6>, 2016.
- Udisti, R., Bazzano, A., Becagli, S., Bolzacchini, E., Caiazzo, L., Cappelletti, D., Ferrero, L., Frosini, D., Giardi, F., Grotti, M., Lupi, A., Malandrino, M., Mazzola, M., Moroni, B., Severi, M., Traversi, R., Viola, A., and Vitale, V.: Sulfate source apportionment in the Ny-Ålesund (Svalbard Islands) Arctic aerosol, *Rendiconti Lincei*, 27, 85–94, <https://doi.org/10.1007/s12210-016-0517-7>, 2016.
- van Marle, M. J. E., Kloster, S., Magi, B. I., Marlon, J. R., Daniou, A.-L., Field, R. D., Arneth, A., Forrest, M., Hantson, S., Kehrwald, N. M., Knorr, W., Lasslop, G., Li, F., Mangeon, S., Yue, C., Kaiser, J. W., and van der Werf, G. R.: Historic global biomass burning emissions for CMIP6 (BB4CMIP) based on merging satellite observations with proxies and fire models (1750–2015), *Geosci. Model Dev.*, 10, 3329–3357, <https://doi.org/10.5194/gmd-10-3329-2017>, 2017.
- Vessey, A. F., Hodges, K. I., Shaffrey, L. C., and Day, J. J.: An inter-comparison of Arctic synoptic scale storms between four global reanalysis datasets, *Clim. Dynam.*, 54, 2777–2795, <https://doi.org/10.1007/s00382-020-05142-4>, 2020.
- Willis, M. D., Köllner, F., Burkart, J., Bozem, H., Thomas, J. L., Schneider, J., Aliabadi, A. A., Hoor, P. M., Schulz, H., Herber, A. B., Leaitch, W. R., and Abbatt, J. P. D.: Evidence for marine biogenic influence on summertime Arctic aerosol, *Geophys. Res. Lett.*, 44, 6460–6470, <https://doi.org/10.1002/2017GL073359>, 2017.
- Winiger, P., Barrett, T. E., Sheesley, R. J., Huang, L., Sharma, S., Barrie, L. A., Yttri, K. E., Evangelidou, N., Eckhardt, S., Stohl, A., Klimont, Z., Heyes, C., Semiletov, I. P., Dudarev, O. V., Charkin, A., Shakhova, N., Holmstrand, H., Andersson, A., and Gustafsson, Ö.: Source apportionment of circum-Arctic atmospheric black carbon from isotopes and modeling, *Sci. Adv.*, 5, eaau8052, <https://doi.org/10.1126/sciadv.aau8052>, 2019.

Yli-Tuomi, T., Hopke, P. K., Paatero, P., Basunia, M. S., Landsberger, S., Viisanen, Y., and Paatero, J.: Atmospheric aerosol over Finnish Arctic: source analysis by the multilinear engine and the potential source contribution function, *Atmos. Environ.*, 37, 4381–4392, [https://doi.org/10.1016/S1352-2310\(03\)00569-7](https://doi.org/10.1016/S1352-2310(03)00569-7), 2003a.

Yli-Tuomi, T., Venditte, L., Hopke, P. K., Basunia, M. S., Landsberger, S., Viisanen, Y., and Paatero, J.: Composition of the Finnish Arctic aerosol: collection and analysis of historic filter samples, *Atmos. Environ.*, 37, 2355–2364, [https://doi.org/10.1016/S1352-2310\(03\)00164-X](https://doi.org/10.1016/S1352-2310(03)00164-X), 2003b.