

SERIAL DEPENDENCE ACROSS FEATURES AND OBJECTS

Gizay Ceylan¹, Michael H. Herzog¹, David Pascucci¹

¹Laboratory of Psychophysics, Brain Mind Institute, École Polytechnique Fédérale de Lausanne (EPFL), Lausanne, Switzerland

INTRODUCTION

Recent work claims that visual perception is systematically biased toward stimuli seen in the recent past, a phenomenon known as **serial dependence** (SD)¹.

Whether SD is of truly perceptual or post-perceptual nature, however, is still an open question².

Here we sought to provide a definitive answer by testing whether SD is selective for visual features and stimuli, a hallmark of early perceptual processes.

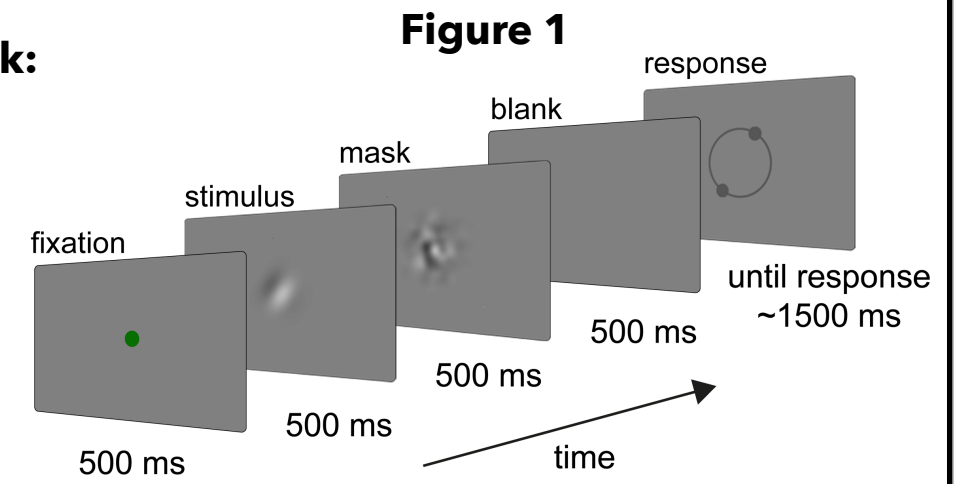
METHODS

Orientation adjustment task:

Participants reproduced the orientation of stimuli by adjusting a response probe.

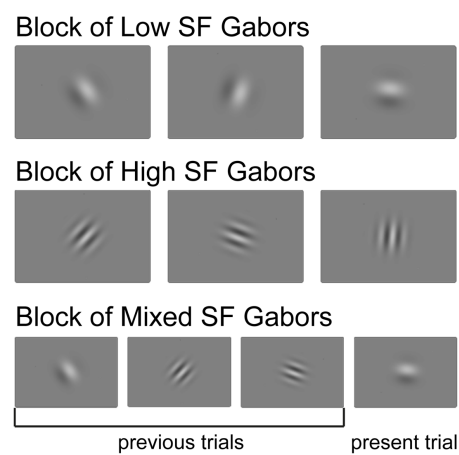
SD:

The deviation of adjustment errors toward previous orientations.



EXPERIMENT 1

Figure 2



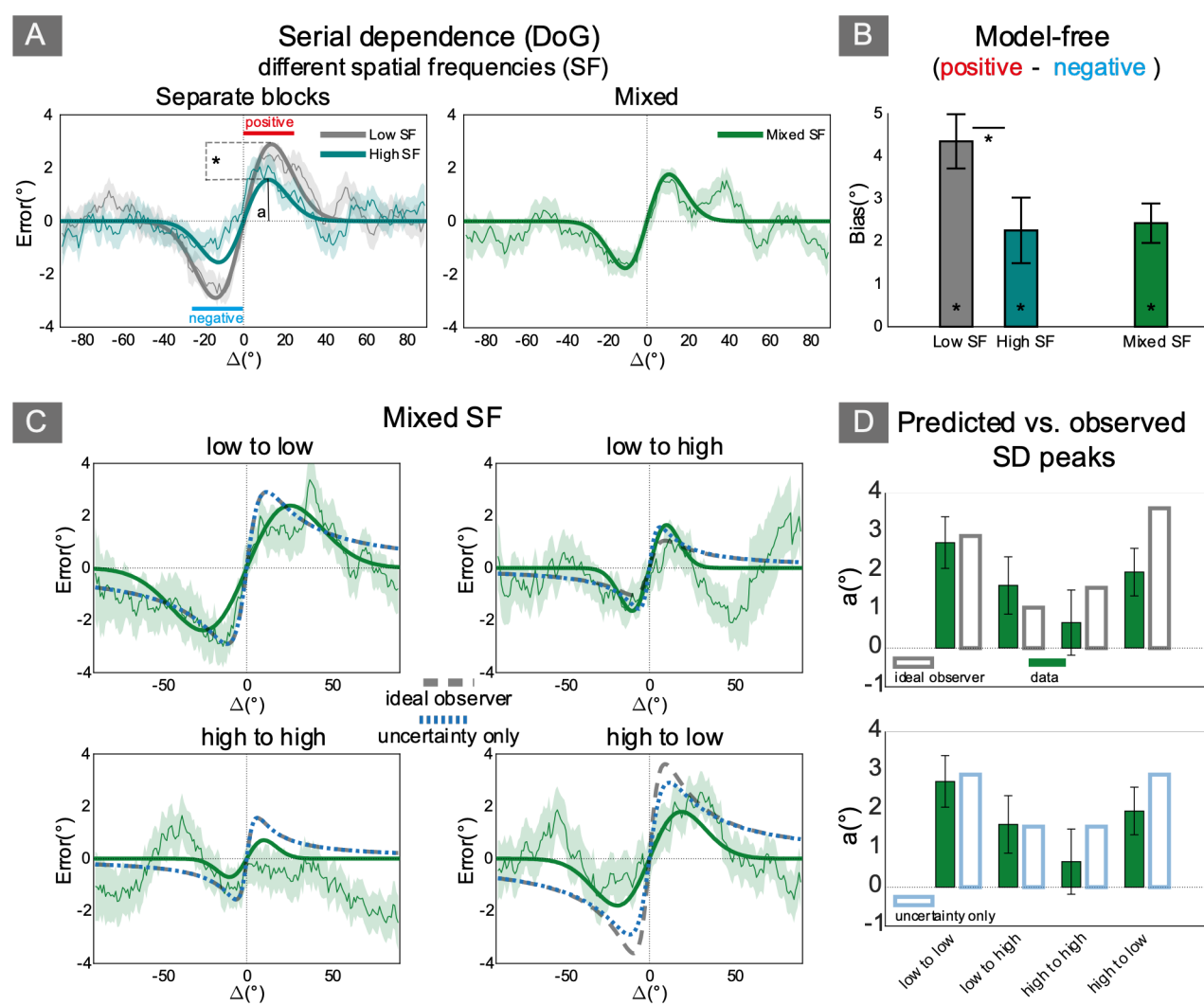
N = 24

SD for Gabors with different spatial frequencies (SF):

Conditions:

Low SF Gabor (.33 cpd)
High SF Gabor (1.00 cpd)
Mixed SF

Figure 3

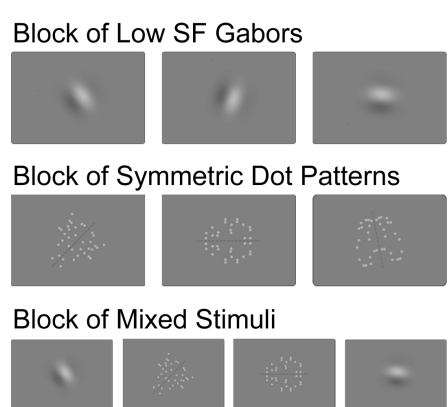


RESULTS

- SD occurred in all conditions (Fig. 3A-B);
- SD was overall larger for Low SF Gabors;
- In Mixed SF, SD occurred independently of changes in spatial frequency;
- Comparing an **Ideal Observer model** (optimal combination of past and present stimuli)³ with an **Uncertainty Only model**, revealed that SD is explained mostly by the uncertainty in present stimuli (Fig. 3C-D).

EXPERIMENT 2

Figure 4



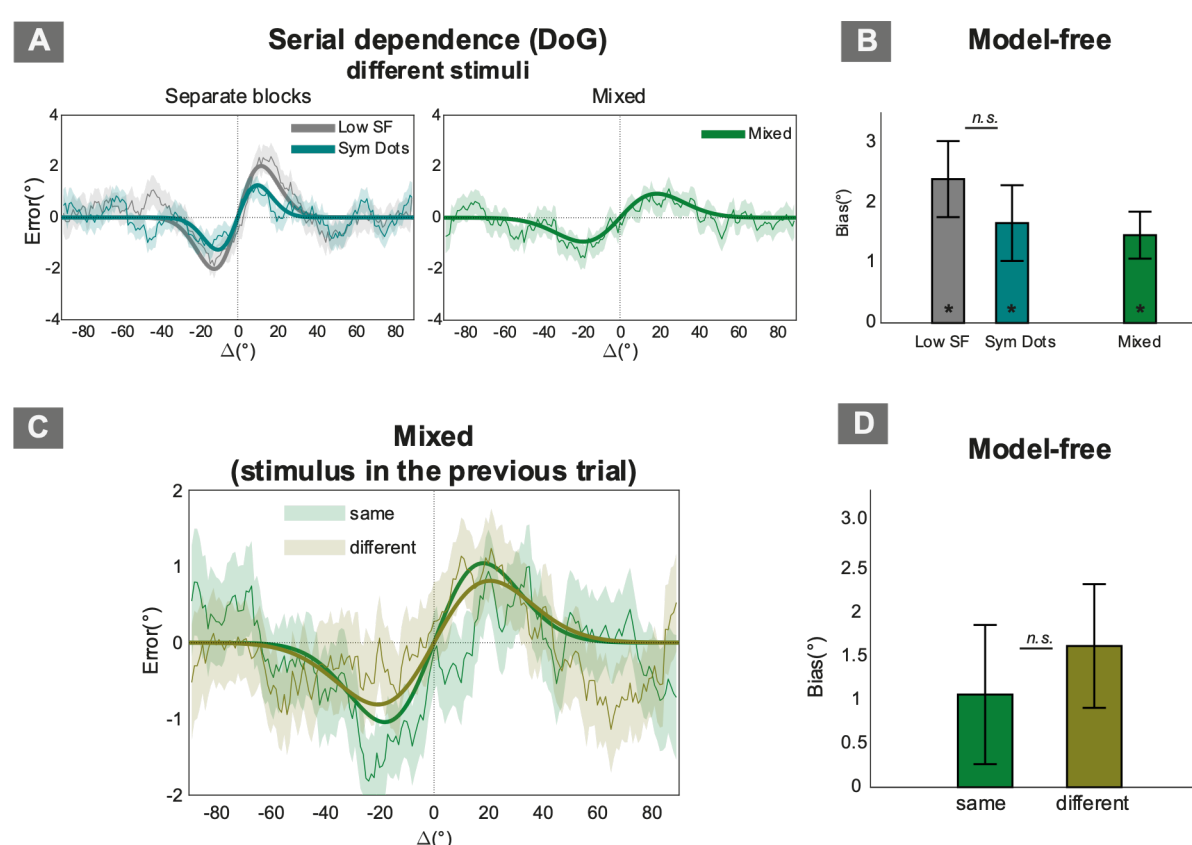
N = 24

SD for different stimuli:

Conditions:

Low SF Gabor
Symmetric Dot
Mixed

Figure 5



RESULTS

- SD occurred in all conditions (Fig. 5A-B);
- SD was not significantly different between blocks of Low SF and Symmetric Dots (Fig. 5B);
- Crucially, we observed SD in the mixed block independent from the type of stimuli presented in the previous and present trial (Fig. 5C-D).

CONCLUSION

- SD is independent from stimuli and stimulus features.
- SD emerges at high-level processing stages where task-relevant representations can be dissociated from the physical attributes of stimuli.
- SD is not purely perceptual.**

REFERENCES

- Fischer, J., & Whitney, D. (2014). Serial dependence in visual perception. *Nature neuroscience*, 17(5), 738-743.
- Pascucci, D., Mancuso, G., Santandrea, E., Della Libera, C., Plomp, G., & Chelazzi, L. (2019). Laws of concatenated perception: Vision goes for novelty, decisions for perseverance. *PLoS biology*, 17(3), e3000144.
- Cicchini, G. M., Mikellidou, K., & Burr, D. C. (2018). The functional role of serial dependence. *Proceedings of the Royal Society B*, 285(1890), 20181722.