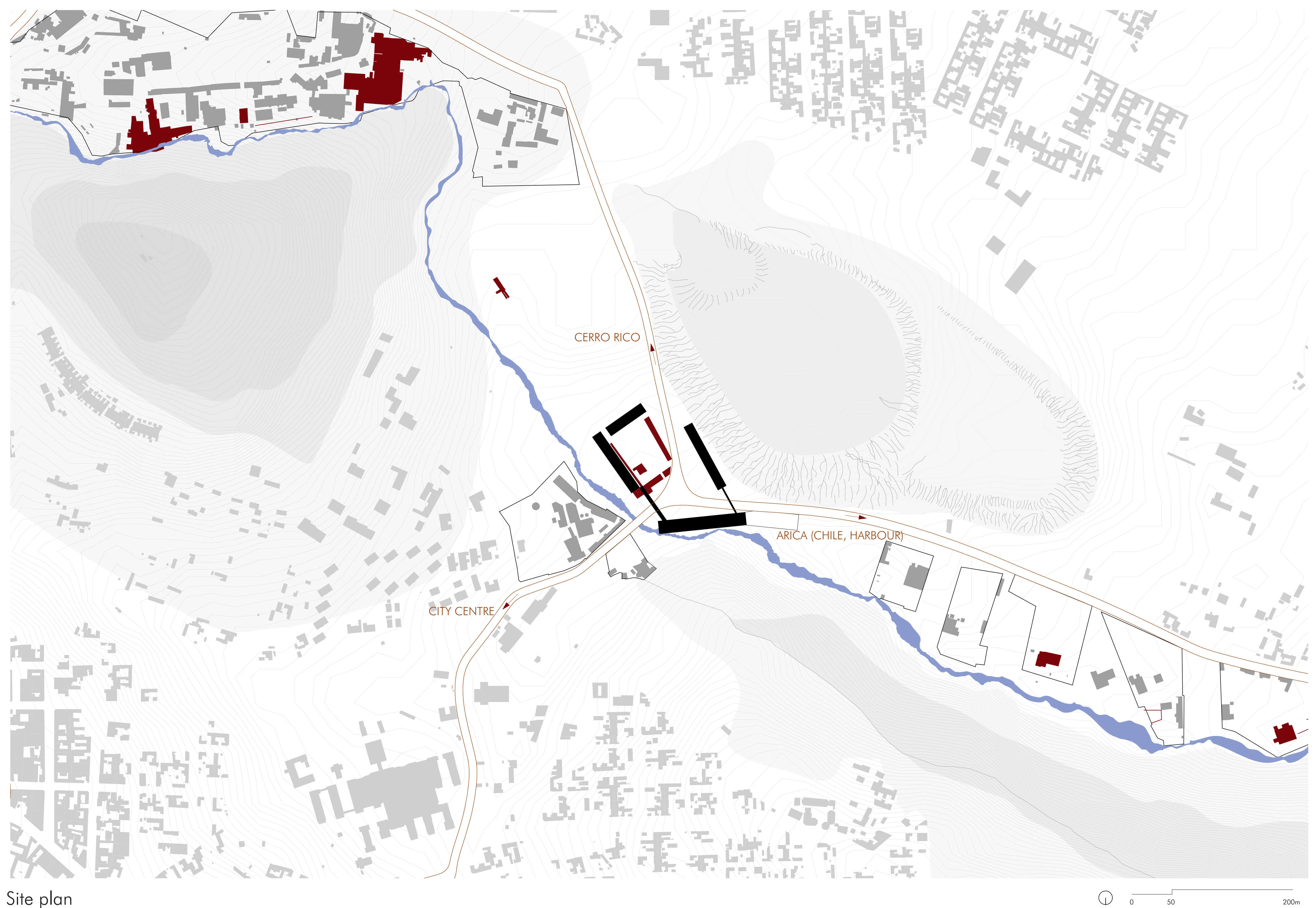


INDUSTRIAL PALIMPSEST

SOCIAL COOPERATIVE IN POTOSÍ (BOLIVIA)



Map of reading

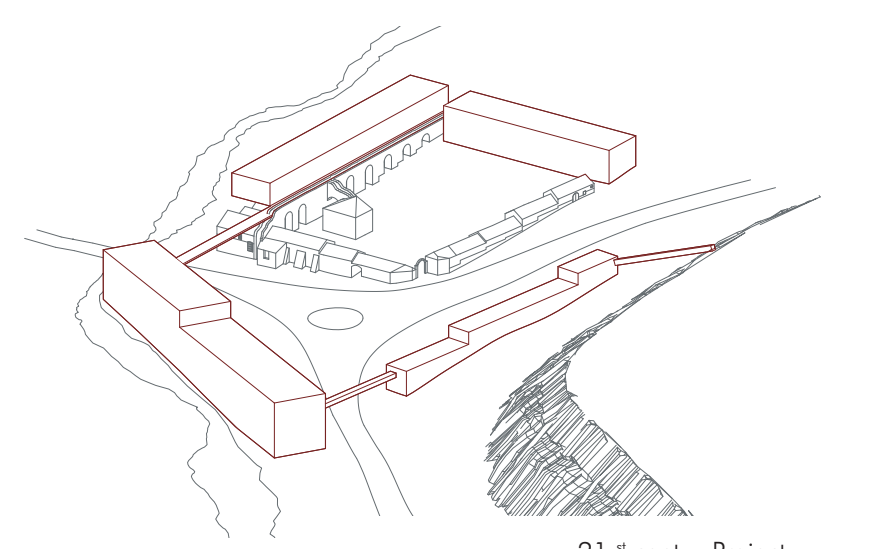
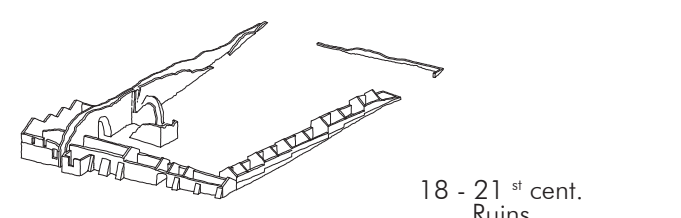
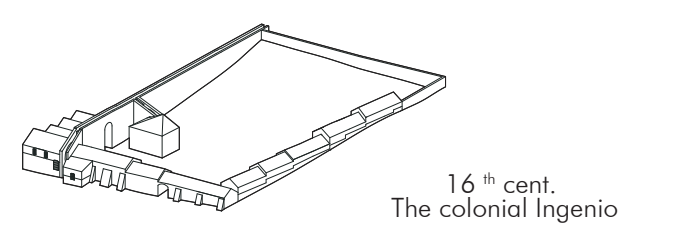


Site plan

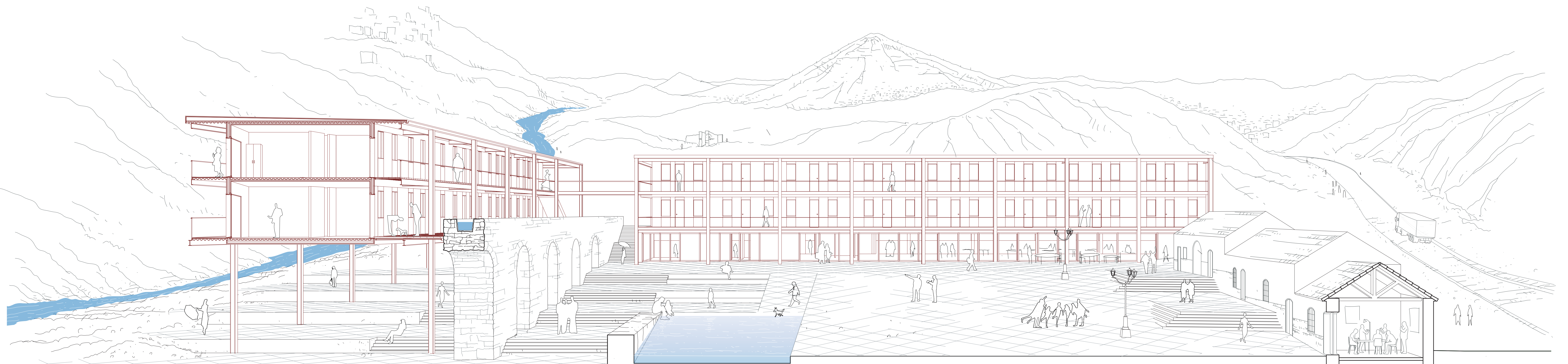
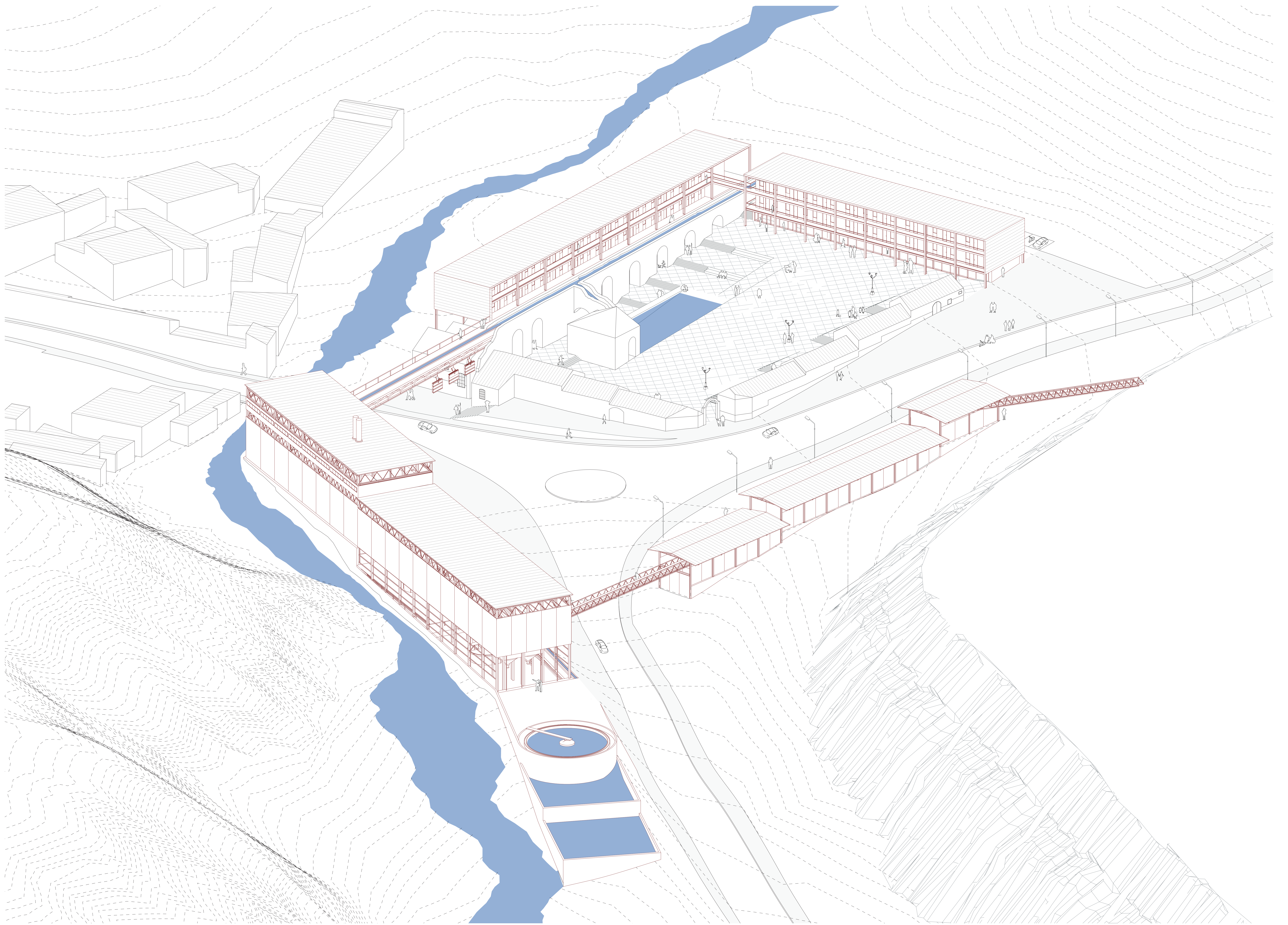
At an altitude of 4000m, in the heart of the Bolivian Andes, the Ribera de los Ingenios river has been supplying water to the population and mining industries of Potosí for more than 500 years. At the interface between the cultural centre and the industrial fabric of the city, the project revives the productive past, enhances heritage and introduces sustainable resource management.

From an Inca axis of development and spirituality, the Ribera became the centre of a vast industrial complex under the Colony. The Spaniards built a series of factories exploiting the mining resources of Potosí with hydraulic energy. These production units, called Ingenios, evolved in line with technological advances. Today they are managed by cooperatives that export the raw materials with low profits.

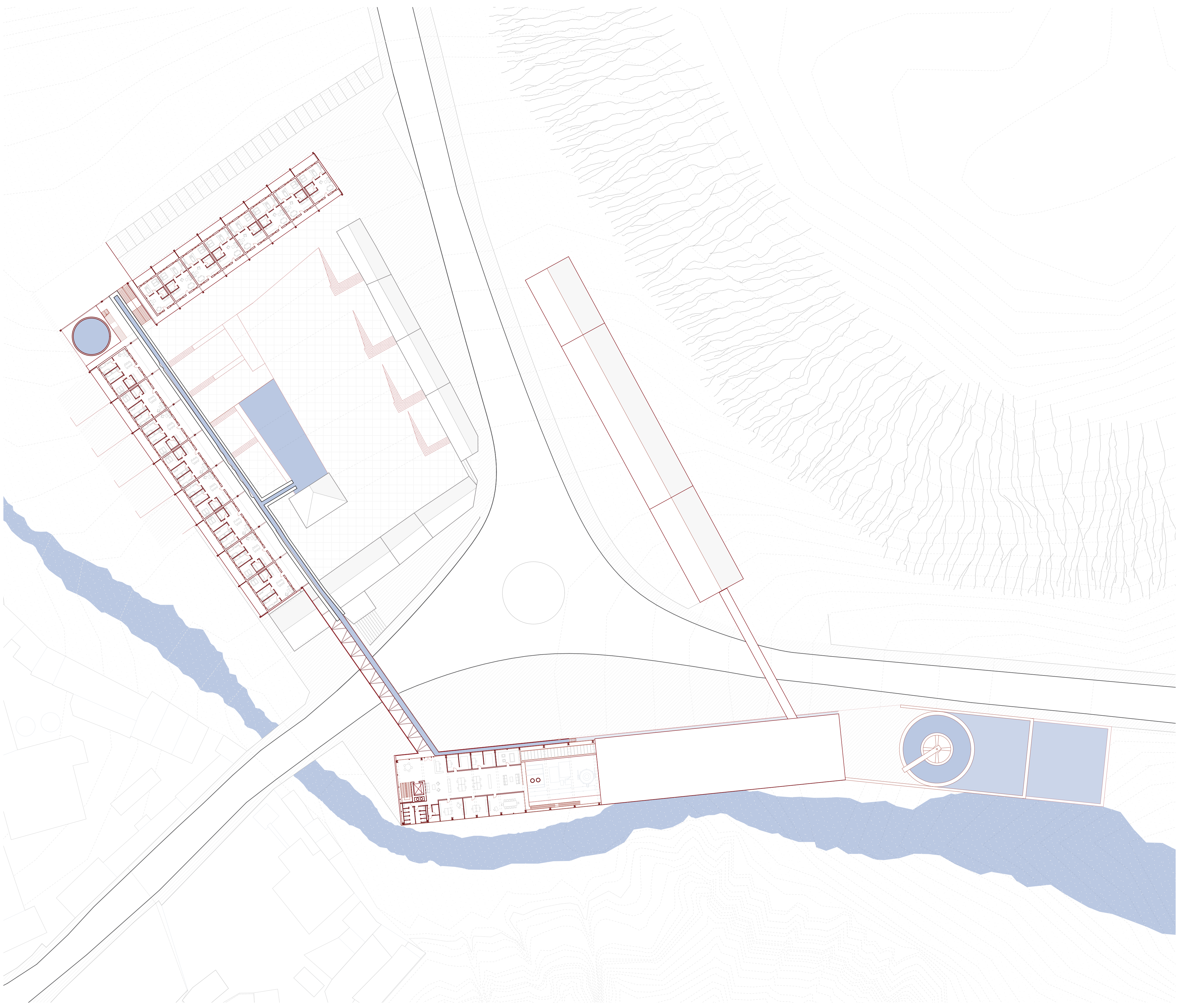
The project proposes the establishment of a new cooperative that introduces a further step in the processing of minerals: the manufacture of a finished product, giving a new impulse to the local economy. It brings together a production and research centre, housing and education facilities. The project makes the entire industrial process transparent, taking advantage of the strong topography to rationalize its productivity. It is built around a 16th century Ingenio and puts its aqueduct back into service, revealing water as a founding element of the architecture. This unique heritage, threatened by oblivion, finally regains its industrial vocation.



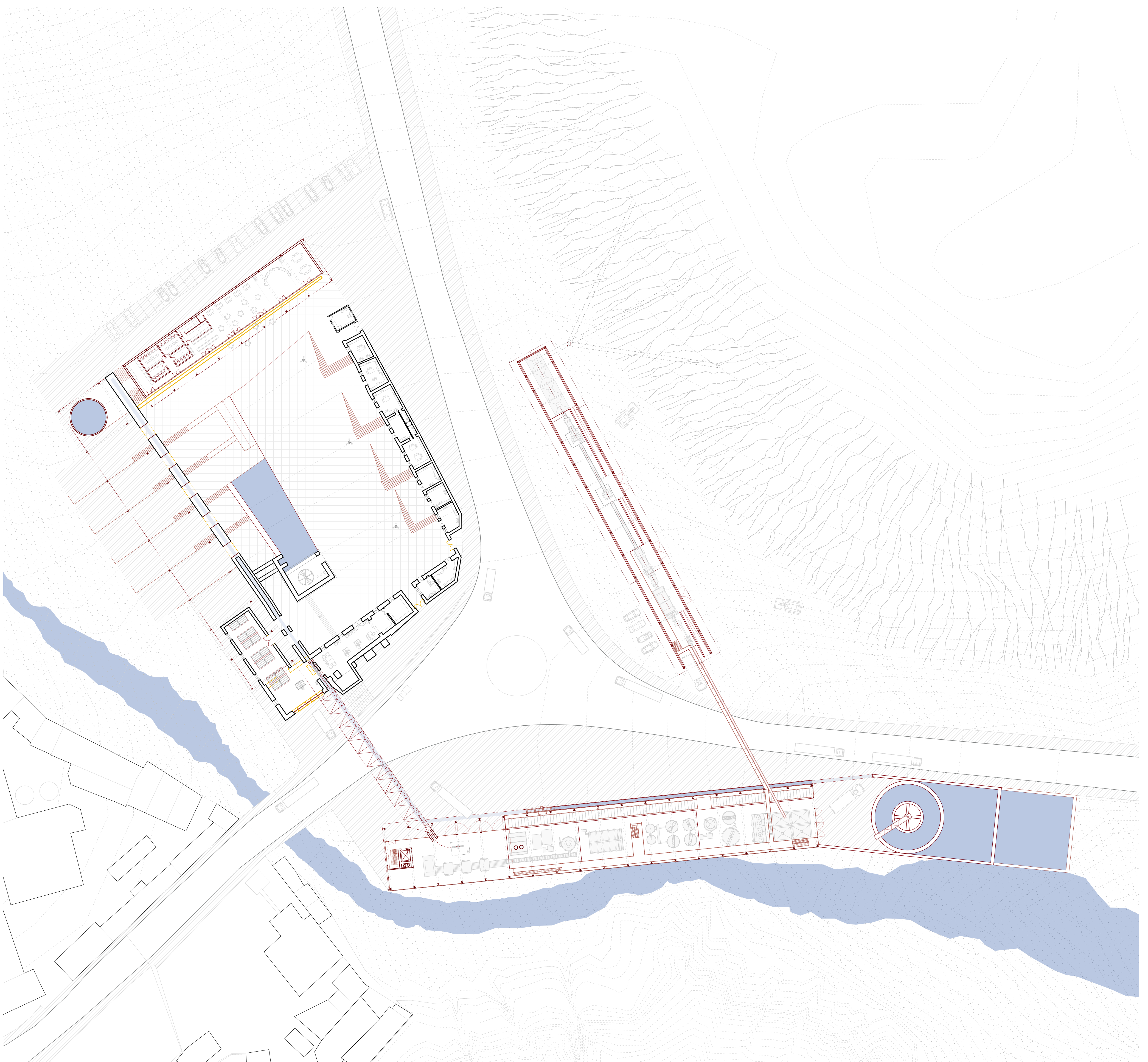
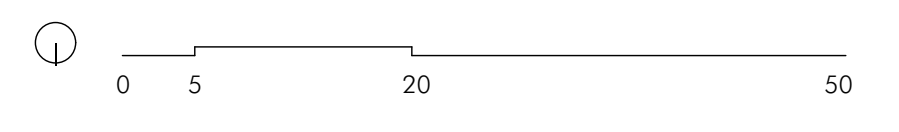
Evolution of the Ingenio over time



THE COURTYARD OF THE INGENIO



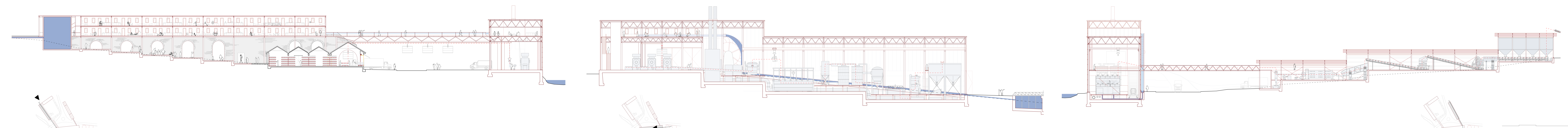
FIRST FLOOR



GROUND FLOOR



WATER AND MINERAL PATHS



SOCIAL INGENIO

PROCESSING PLANT

EXTRACTION PLANT

