

III

T'AS OÙ LES VACHES ?

Enoncé théorique
Hugo Pachoud
Jérémy Prongué

prof. Dieter Dietz
assistante Elena Chiavi
EPFL, 2020

L'AJOIE

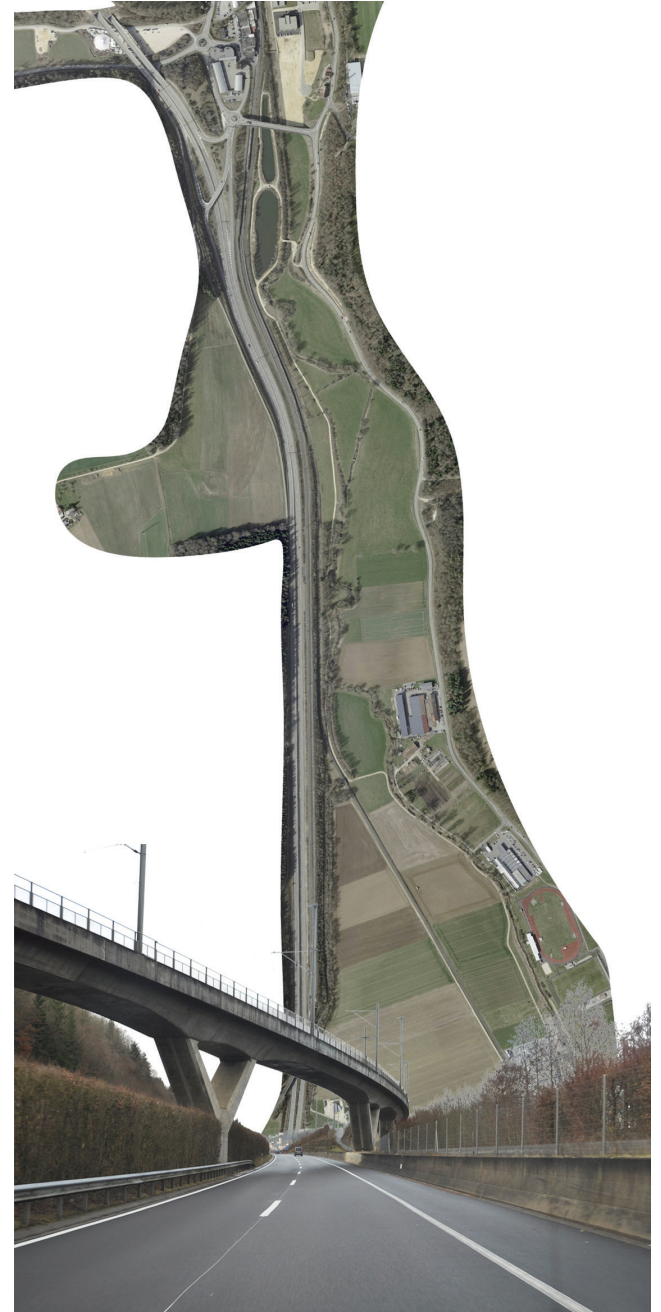


Mont-Terri -> Courtemaîche -> Buix

1/150 000

Boncourt -> Buix

MONT-TERRI





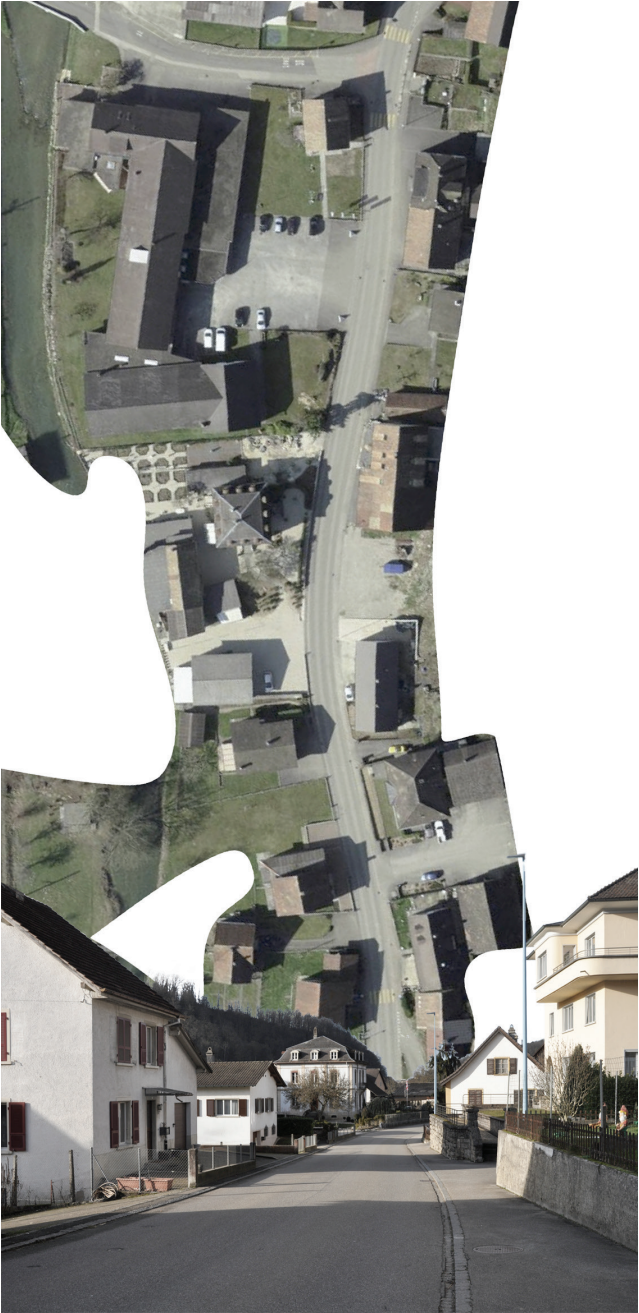
COURTEMAÎCHE





BUIX





BONCOURT



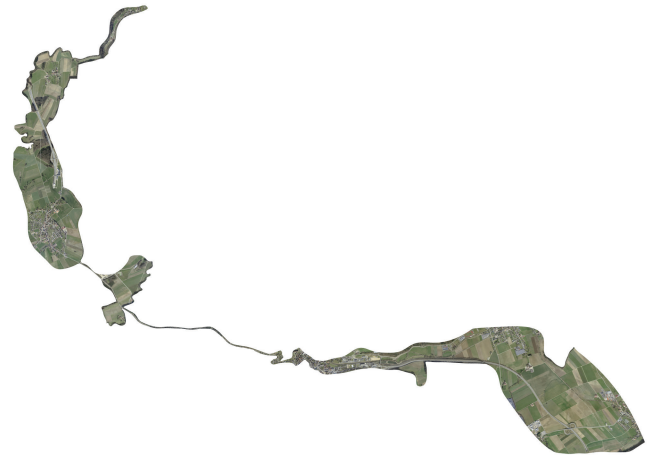
BUIX







L'AJOIE



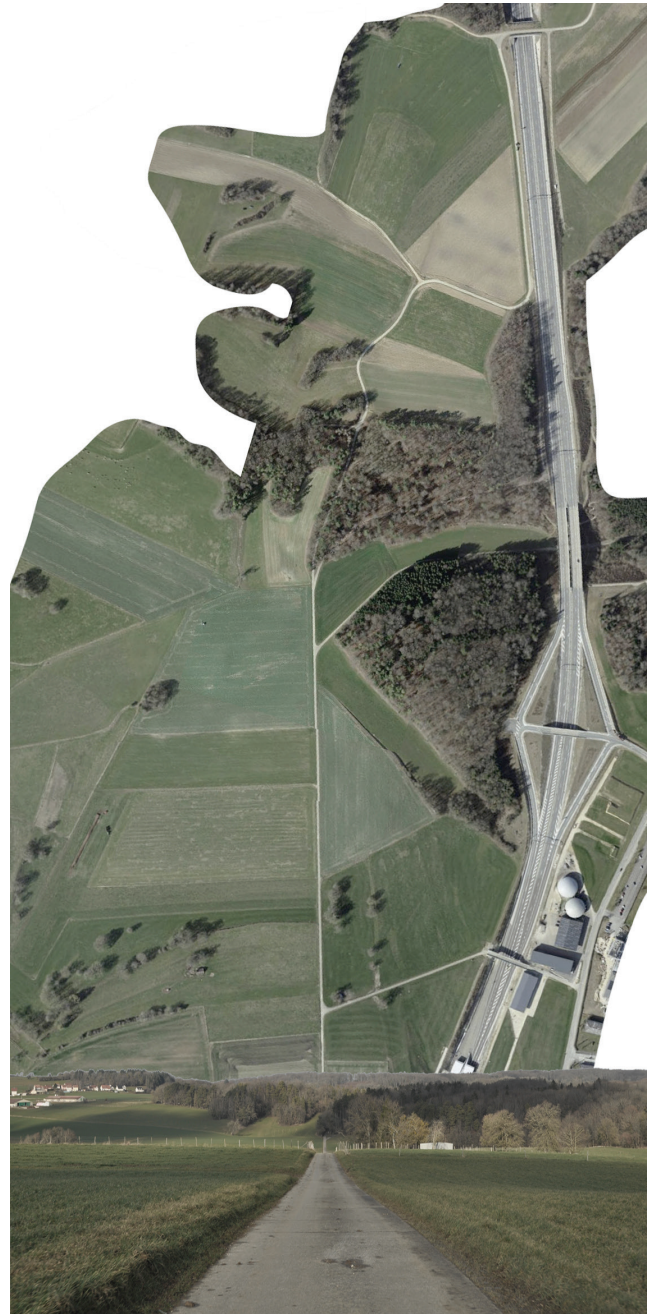
Mont-Terri -> Bure -> Buix

1/150 000

PORRENTRUY

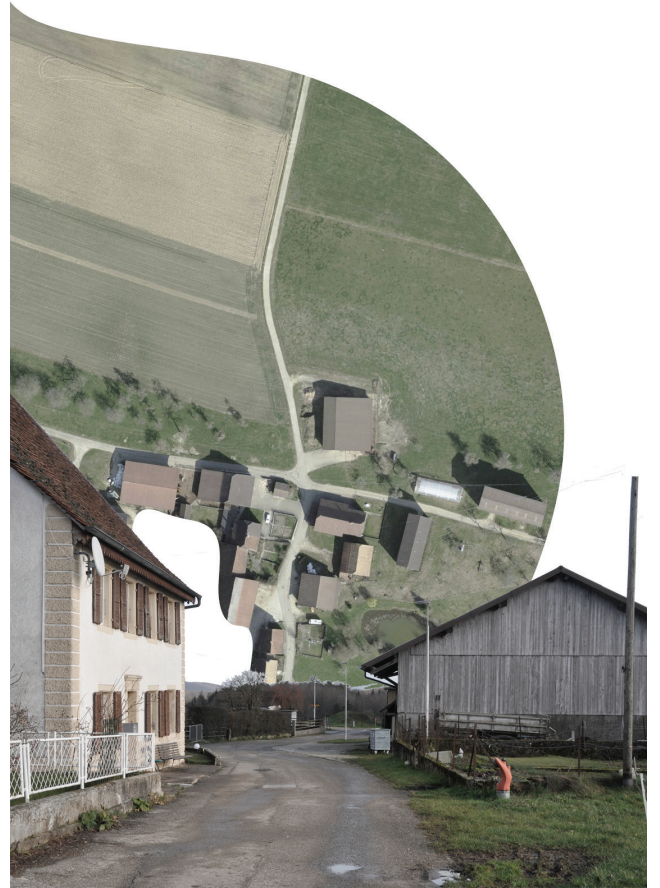
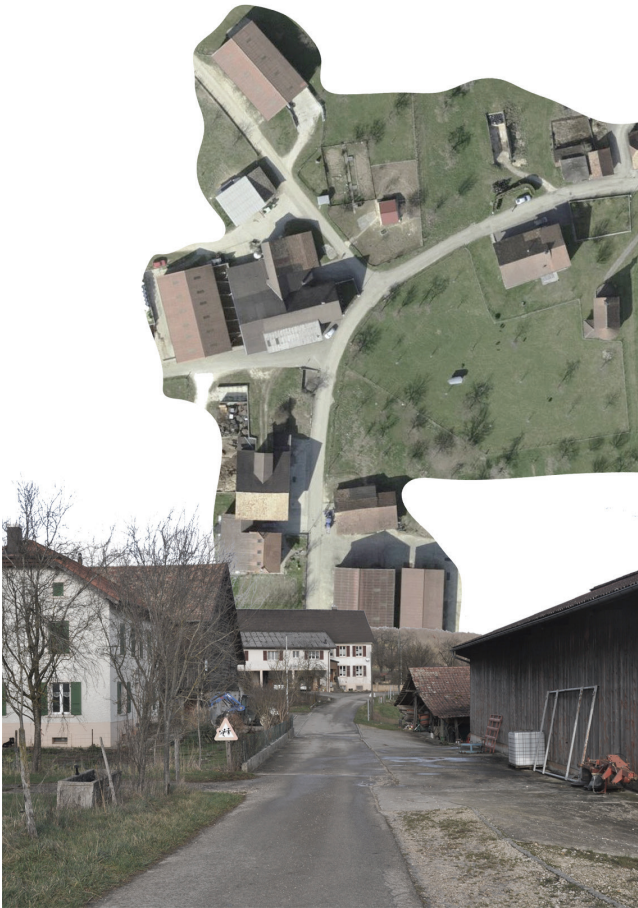


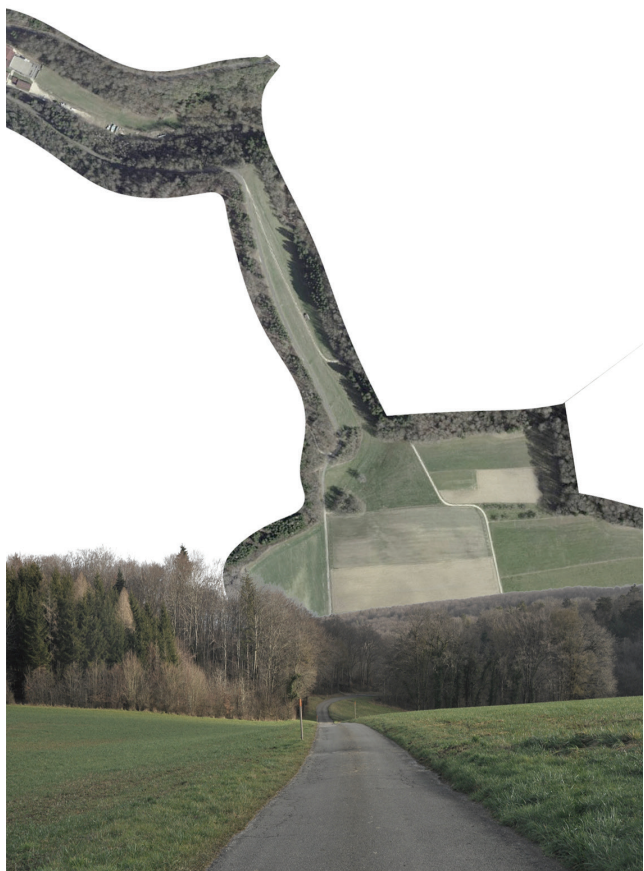
BURE



BUIX - LE MAIRA





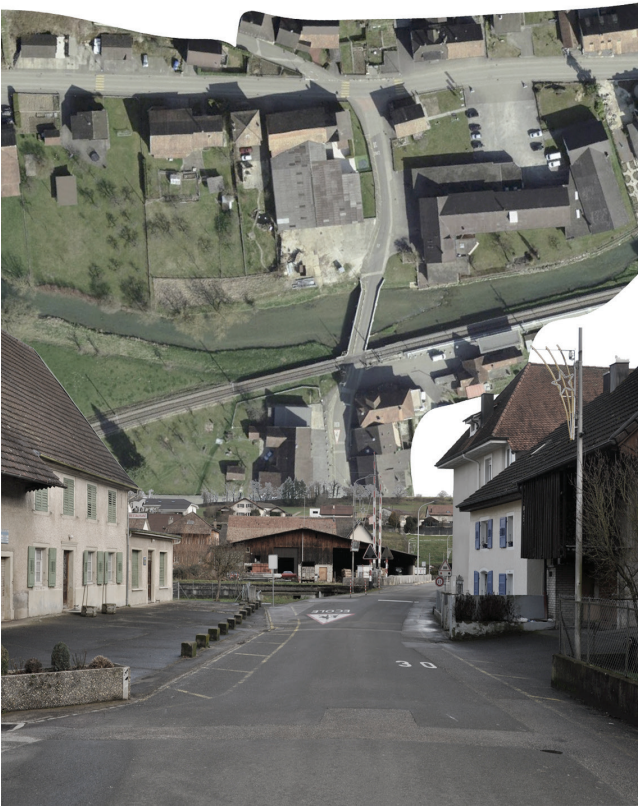


BUIX - LAVAUX



BUIX - LE MAIRA





LA BROYE



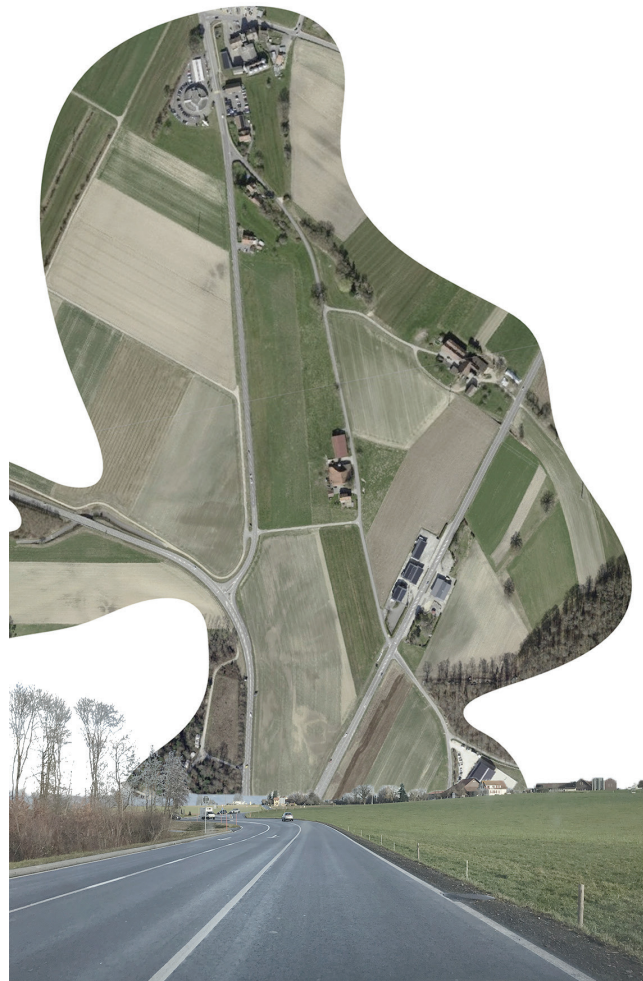
Vers-chez-Perrin -> Payerne -> Cugy

1/75 000

VERS-CHEZ-PERRIN



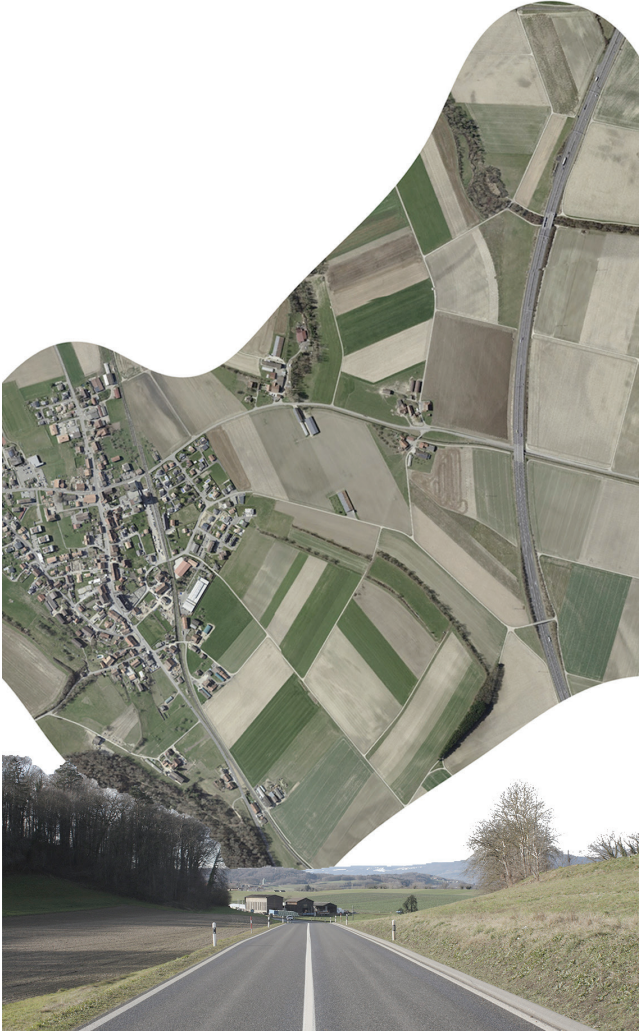
PAYERNE



PAYERNE - (JURA)







CUGY







LA BROYE



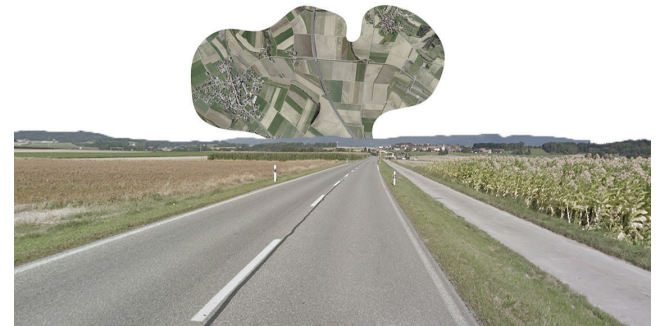
Avenches -> Bussy -> Cugy

1/150 000

AVENCHES



BUSSY - (JURA)

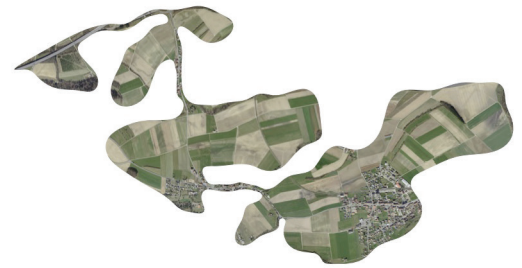




CUGY

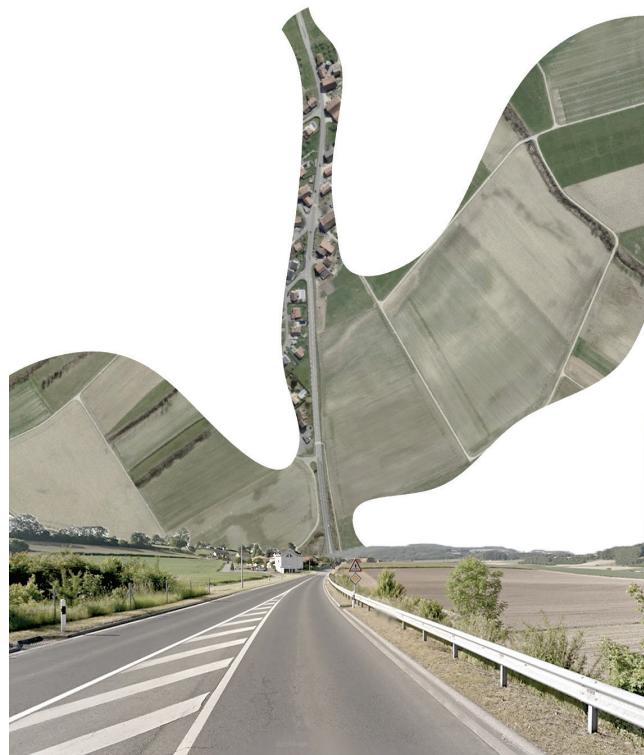


LA BROYE



Estavayer-le-Lac -> Montet -> Cugy

1/75 000



FRASSES



MONTET



CUGY





LA BROYE



Fétigny -> Grange des Bois -> Cugy

1/75 000

FETIGNY



GRANGE DES BOIS



CUGY - (JURA)



