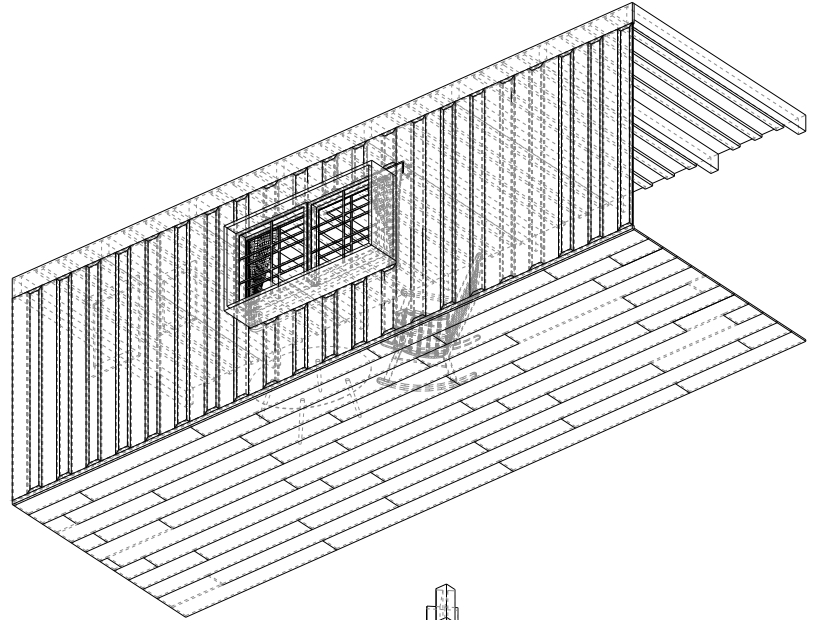


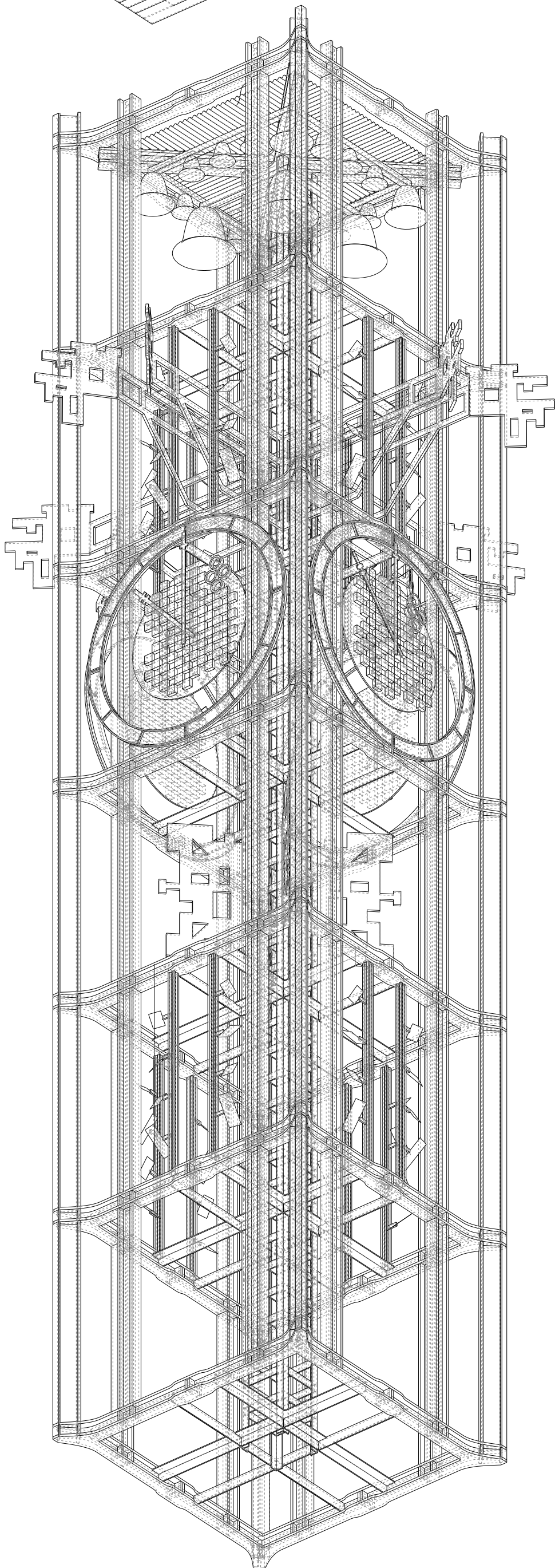
KIRUNA CHURCH:

THE KIRUNA CHURCH WAS BUILT BETWEEN 1909 AND 1912 AND WAS VOTED MOST POPULAR BUILDING IN SWEDEN, WHICH LED TO THE DECISION TO PRESERVE IT FROM DESTRUCTION. THROUGH ITS TRANSITION TO CYBERSPACE, IT QUESTIONS THE ROLE OF REGIONAL IDENTITY IN A REALITY IN WHICH DISTANCES DON'T EXIST ANYMORE. CAN IDENTITY BE TRANSFERRED AS IS TO CYBERSPACE? DOES THE IDEA OF IDENTITY STILL EXIST?



LKAB DIRECTOR HOUSE:

THE HOUSE WAS BUILT IN 1895 BY HJALMAR LUNDBOHM, THE FIRST DIRECTOR OF THE MINING COMPANY LKAB. FOR IT'S TRANSITION TO CYBERSPACE, IT IS TRANSFERRED IN FULL ON THE BACK OF A TRUCK. THE SENSATION OF THE ROOM IN WHICH YOU ARE DOESN'T CHANGE, EVEN THOUGH YOU TRANSFER TO A NEW PERCEPTION OF REALITY.



CLOCK TOWER:

THE CLOCK TOWER, BUILT IN 1963, STANDS ON TOP OF THE CITY HALL. IN CYBERSPACE, IT ALSO STANDS NEXT TO THE CITY HALL, BUT THE CITY HALL IS NOT THE SAME BUILDING. ITS DECONSTRUCTION LED TO THE TRANSFER FROM A PERCEPTION OF TIME CONSTRUCTED AROUND THE RULES OF PHYSICAL SPACE, TO ONE BUILT AROUND THE RULES OF CYBERSPACE. TIME DOESN'T CEASE TO EXIST, BUT IT ISN'T USED TO CLASSIFY INFORMATION IN THE SAME WAY.