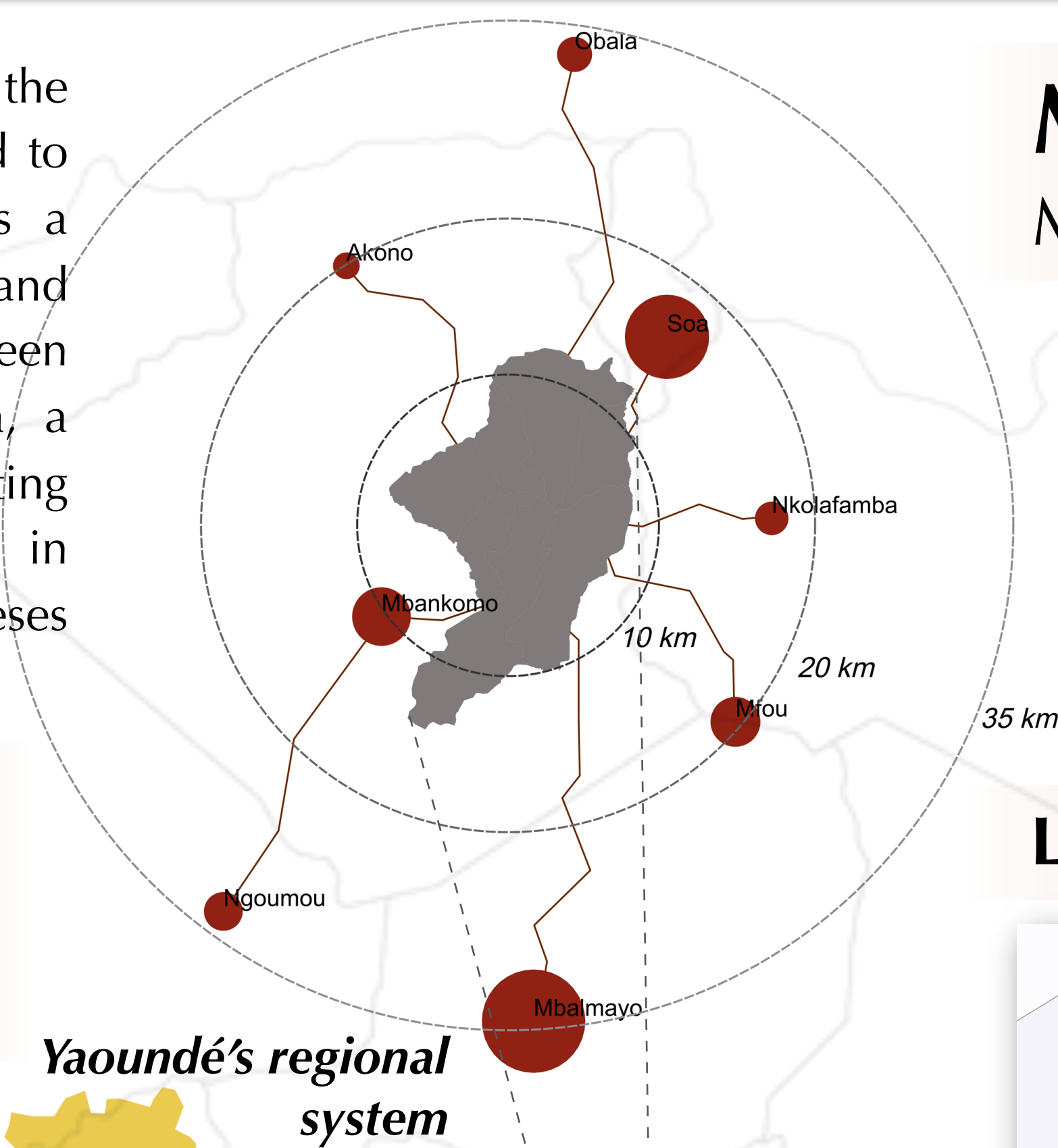


The construction of urban peripheries in sub-Saharan Africa

Case studies : Yaoundé (Cameroun) and Lomé (Togo)

PhD candidate : Armel Kemajou | Urban and Regional Planning Community (CEAT)
 Supervisor : Dr. Jérôme Chenal | École Polytechnique Fédérale de Lausanne (EPFL)

The aim of this research is to gain an in-depth understanding of the underlying mechanisms linked to the development of peripheries, and to advance solutions to control their growth. We postulate that it is a combination of causal elements related to political, spatial, social and mobility aspects. An ambiguous political framework, a gap between administrative boundaries and boundaries of the utilized social area, a configuration of the land tenure system which allows implementing contradicting strategies from different actors, and an improvement in accessibility due to new, informal mode of transport are the four hypotheses explored in two study areas, Yaoundé (Cameroon) and Lomé (Togo).



Methodology and tools

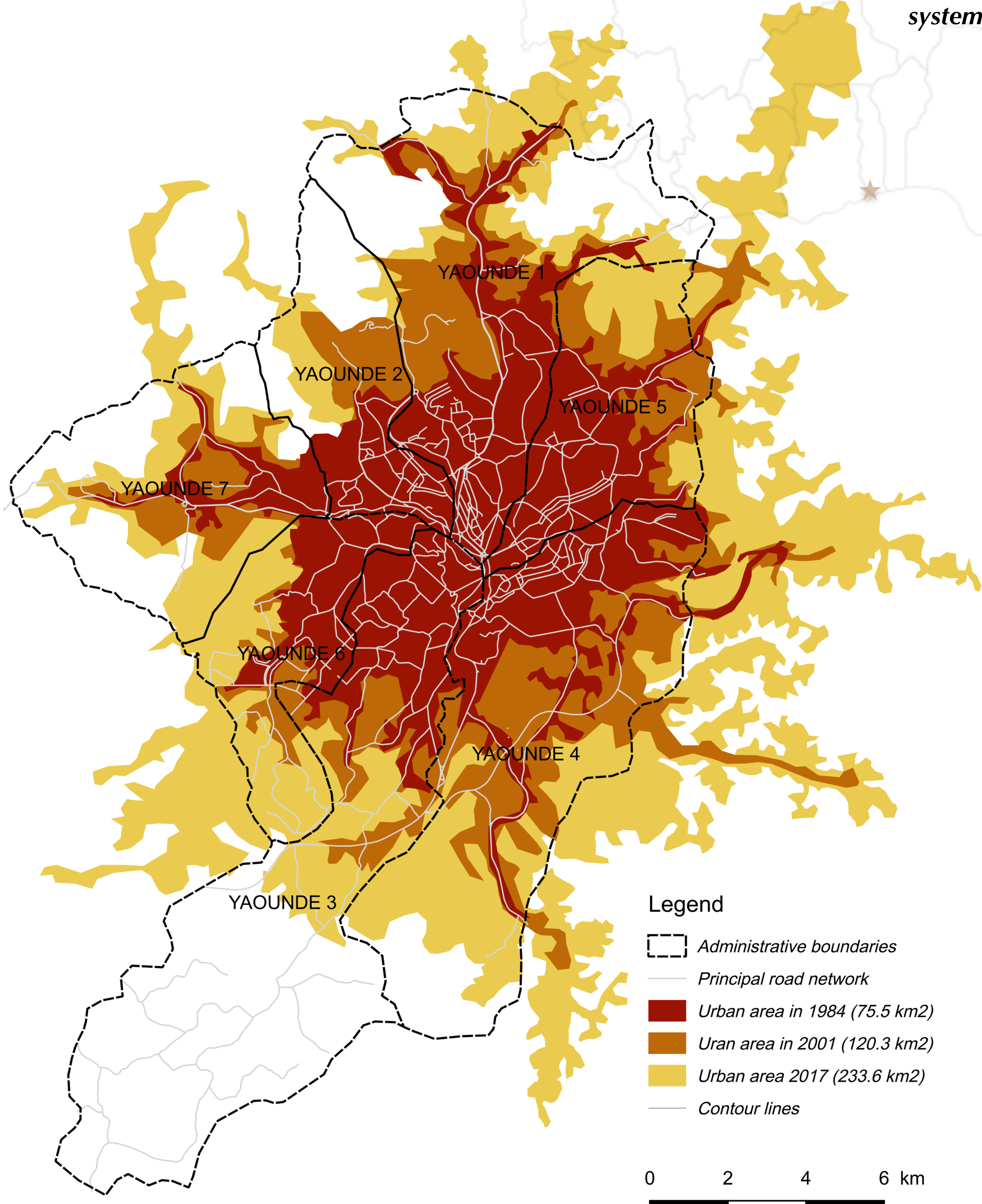
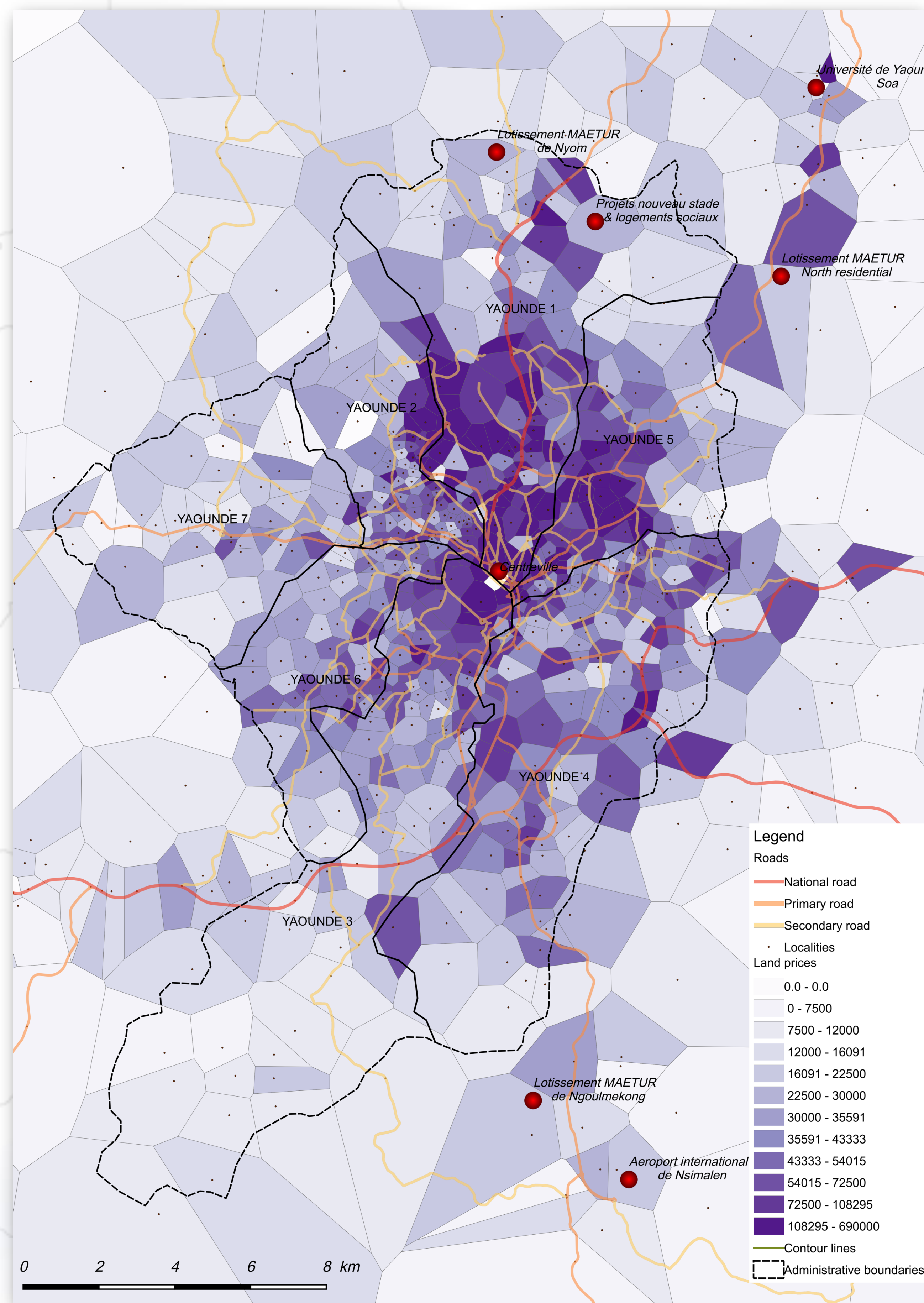
Methodological triangulation

- GIS analysis of land market
- Comprehensive interviews with recent residents
- Experts interviews
- Spatial analysis of motorcycle taxis activities
- Analysis of planning documents and policies

Question

What are the current mechanisms underlying the construction of urban peripheries?

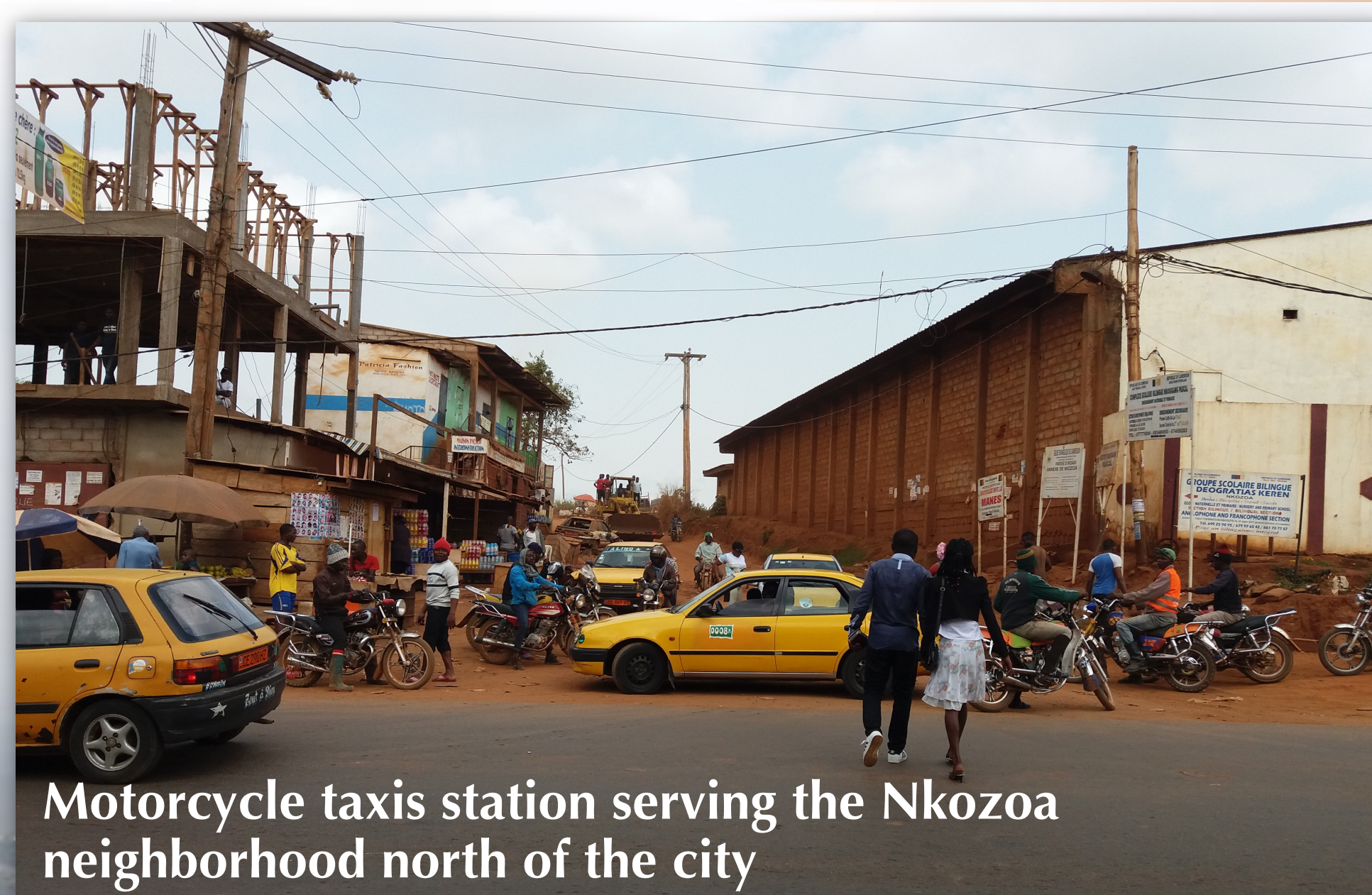
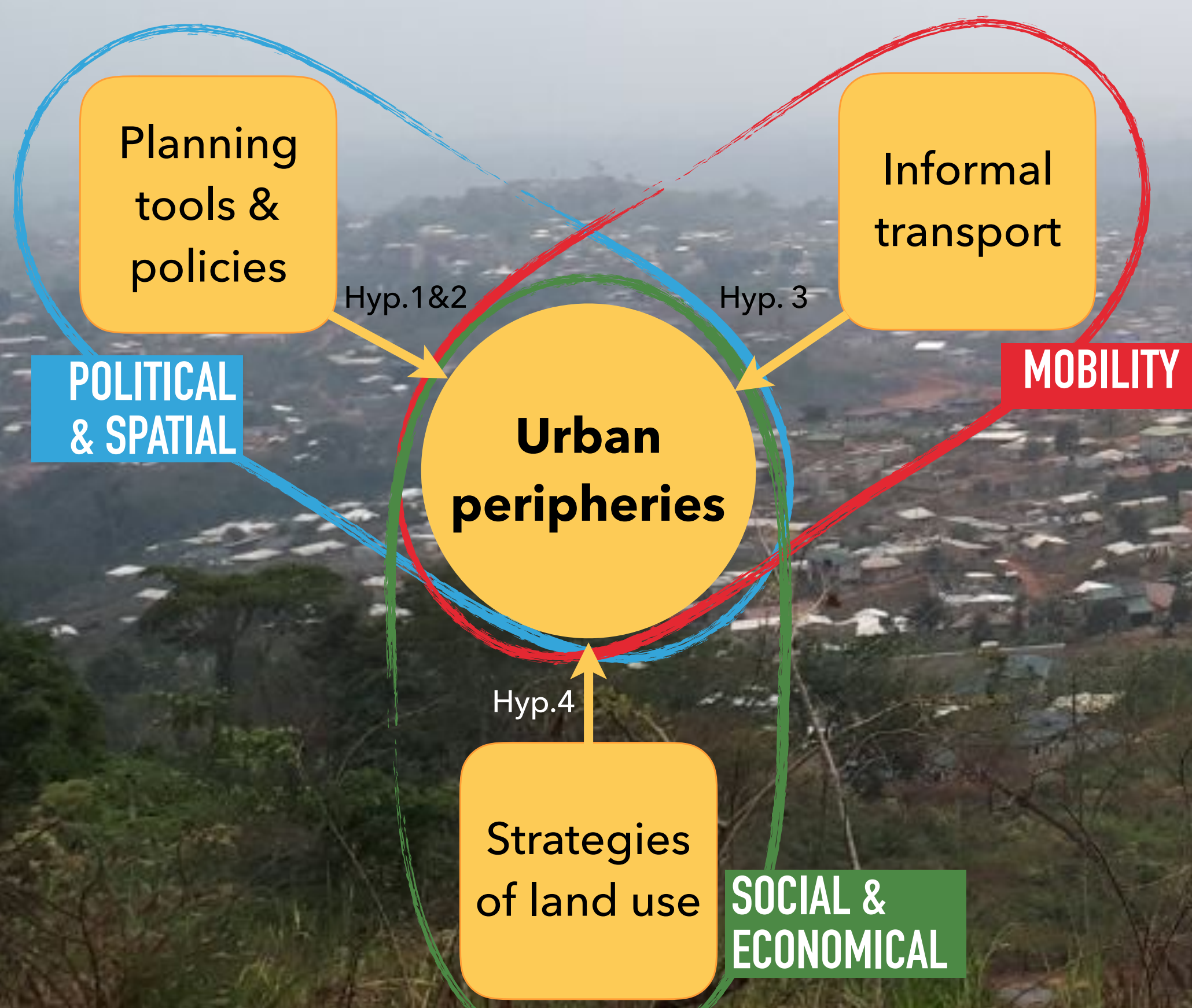
Land prices in Yaoundé and its peripheries



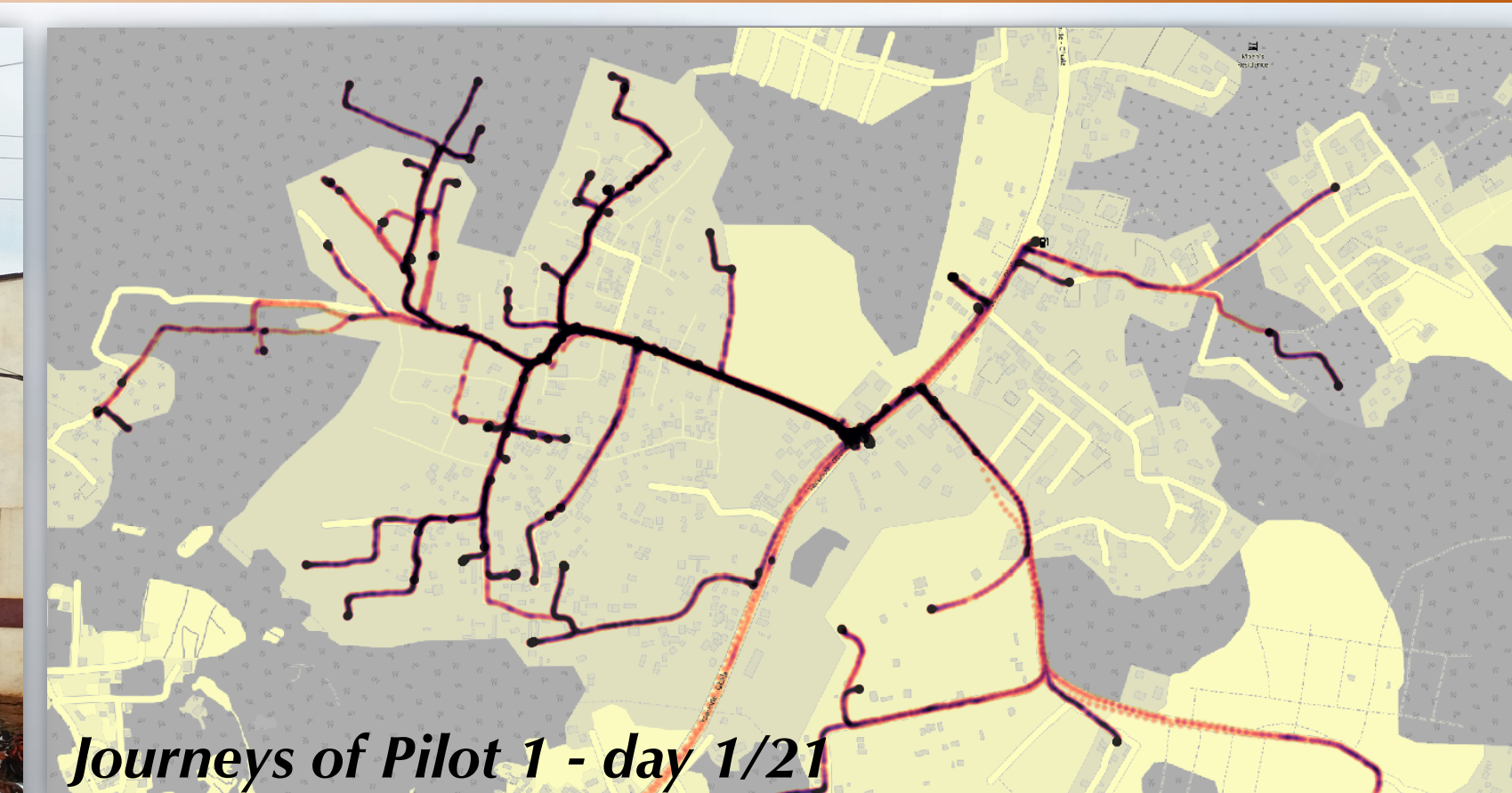
Tracking of motorcycle taxis using GPS devices

Main hypothesis

The growth of both cities is based on three interrelated aspects, which must be considered in an integrated way



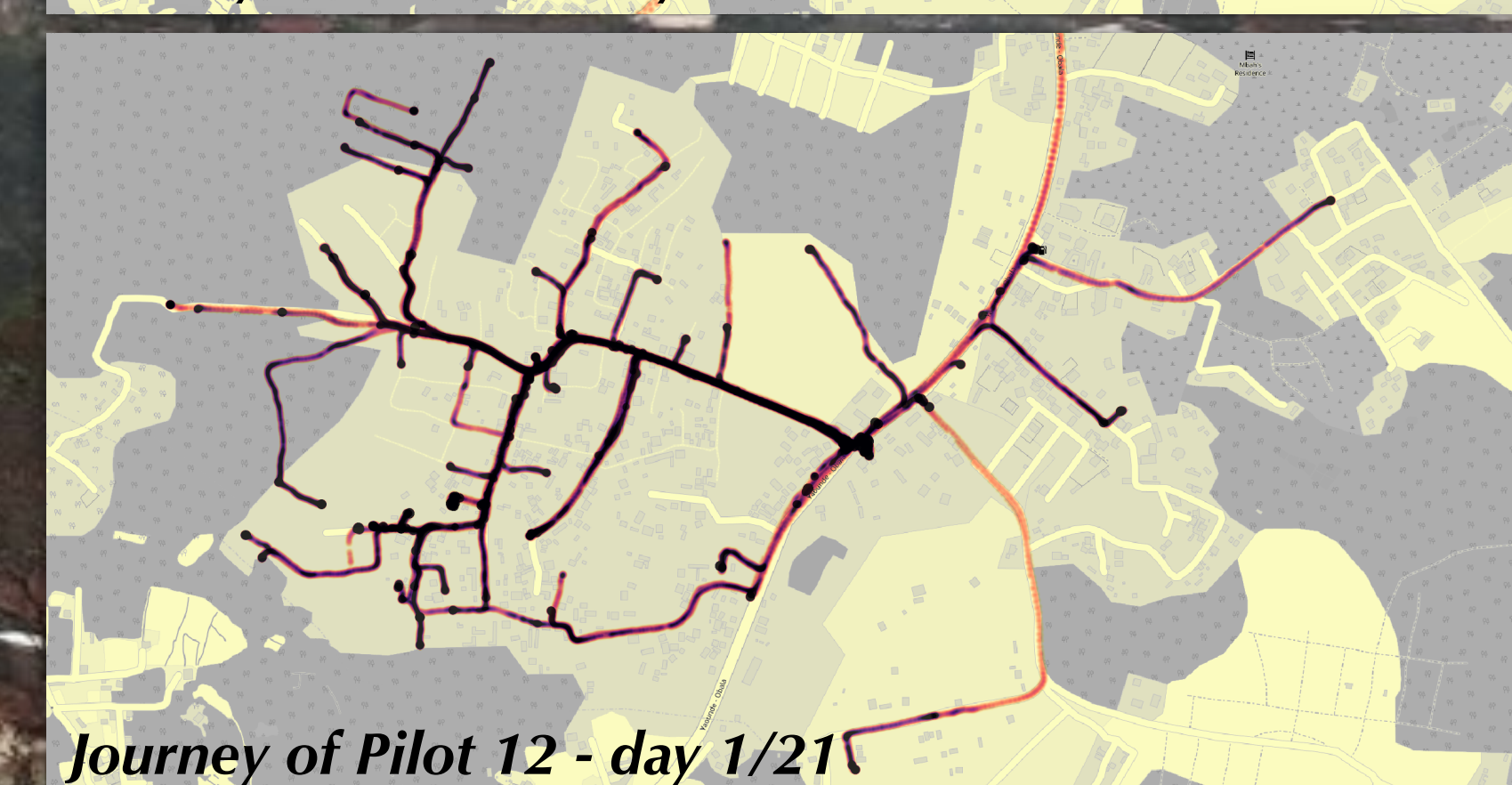
Motorcycle taxis station serving the Nkozoa neighborhood north of the city



Journeys of Pilot 1 - day 1/21



Journeys of Pilot 3 - day 1/21



Journey of Pilot 12 - day 1/21

Funding sources: This work is supported by the Swiss Government excellence scholarship for foreign scholars (academic years 2016-2019) from Federal Commission for Scholarships for Foreign Students (FCS), and the École Polytechnique Fédérale de Lausanne (EPFL).

