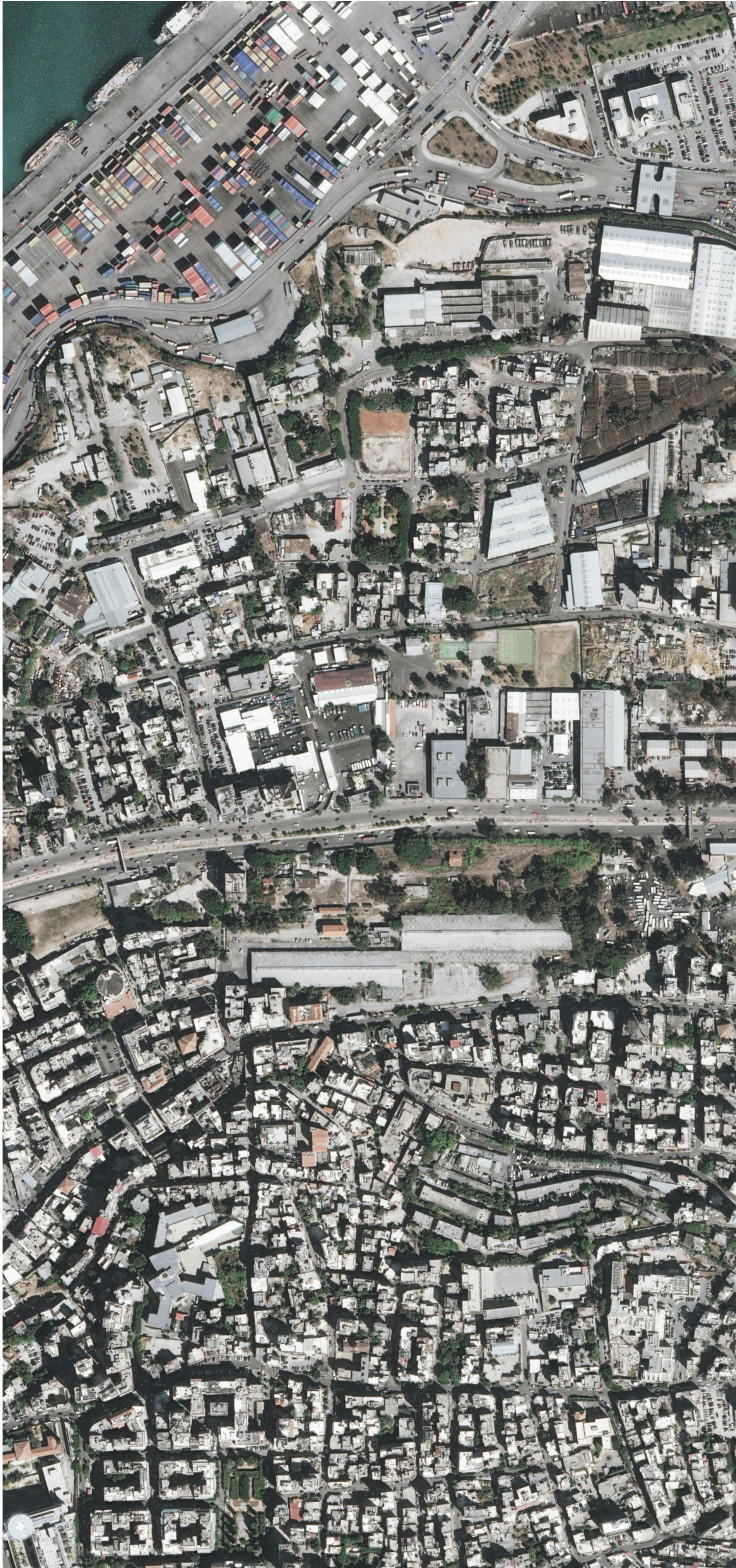


**Site analysis**

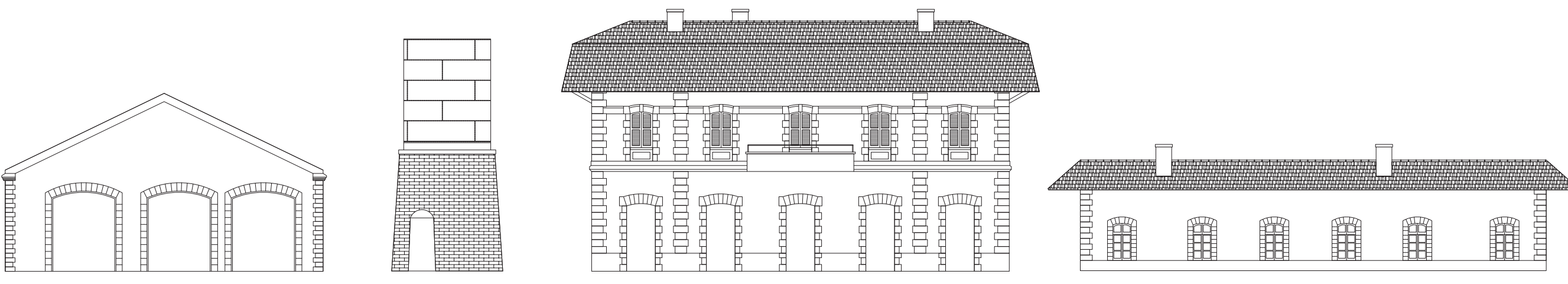
The eastern suburb of Beirut was known for its manufacturing and crafting prowess. Unfortunately, its current de-industrialized landscape presents a high supply of derelict buildings and high unemployment rate among craftsmen. Yet, these concerns are perfect assets for considering a manufacturing proposal.

The site is the former train station located at the intersection of three urban entities characterized by the following resources for production: Space, crafting workforce and consumers.





Present infrastructure



Facade elevation of train infrastructure 1:200



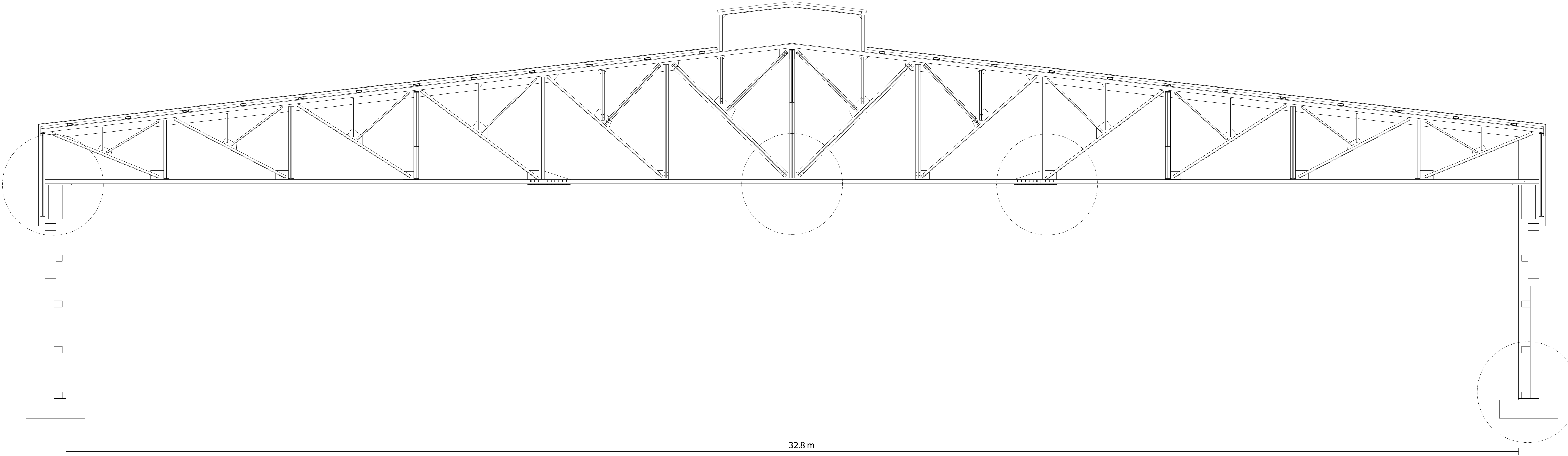
Train station built heritage



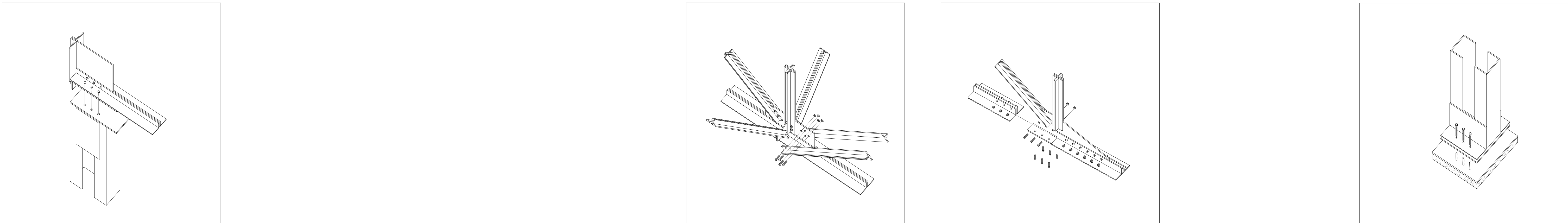
Hangar for bus park



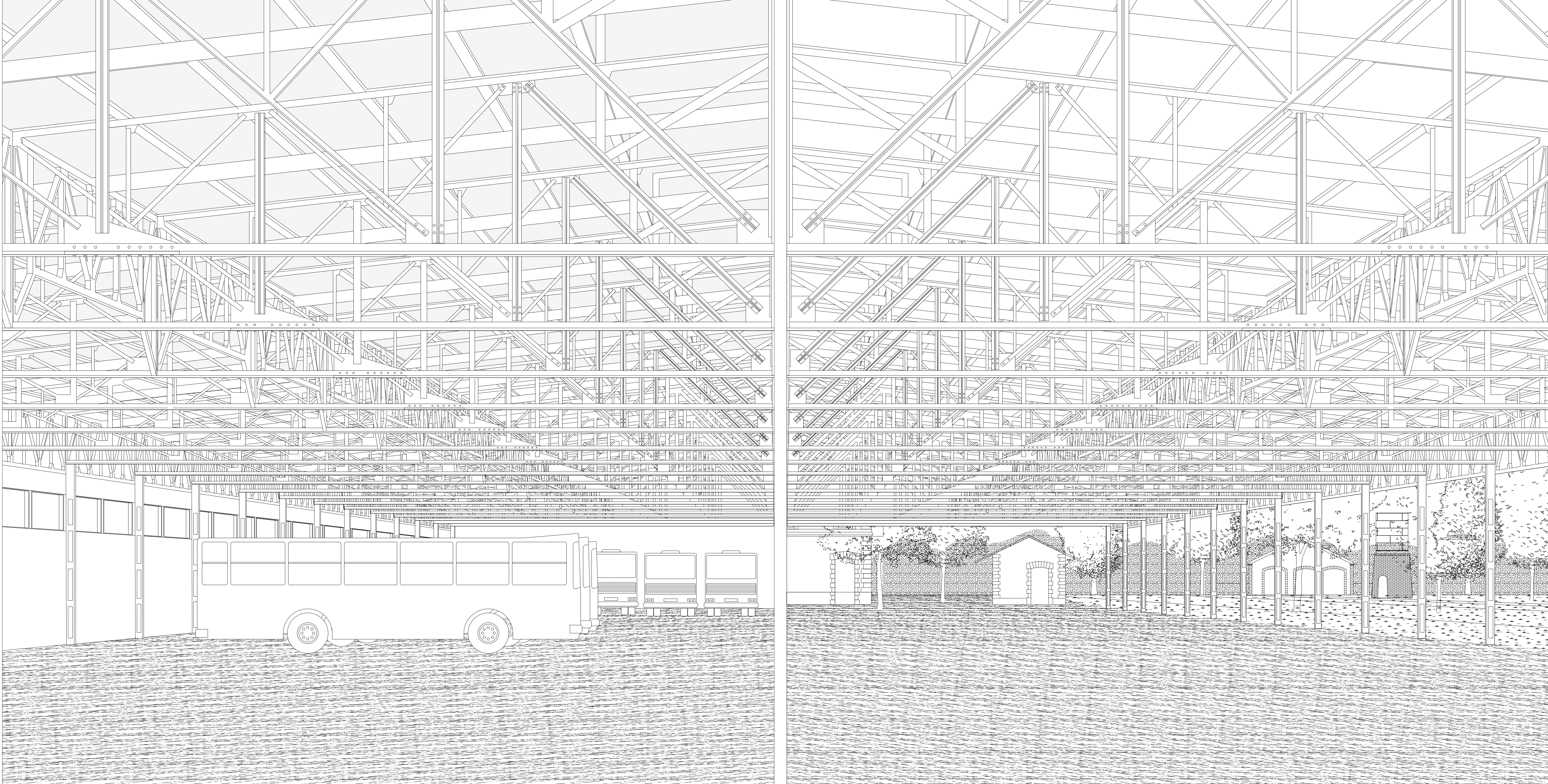
Rail tracks Hangar for bus park Train station built heritage



Hangar's structure elevation (Duo pitch pratt truss) 1:50



Assembly details



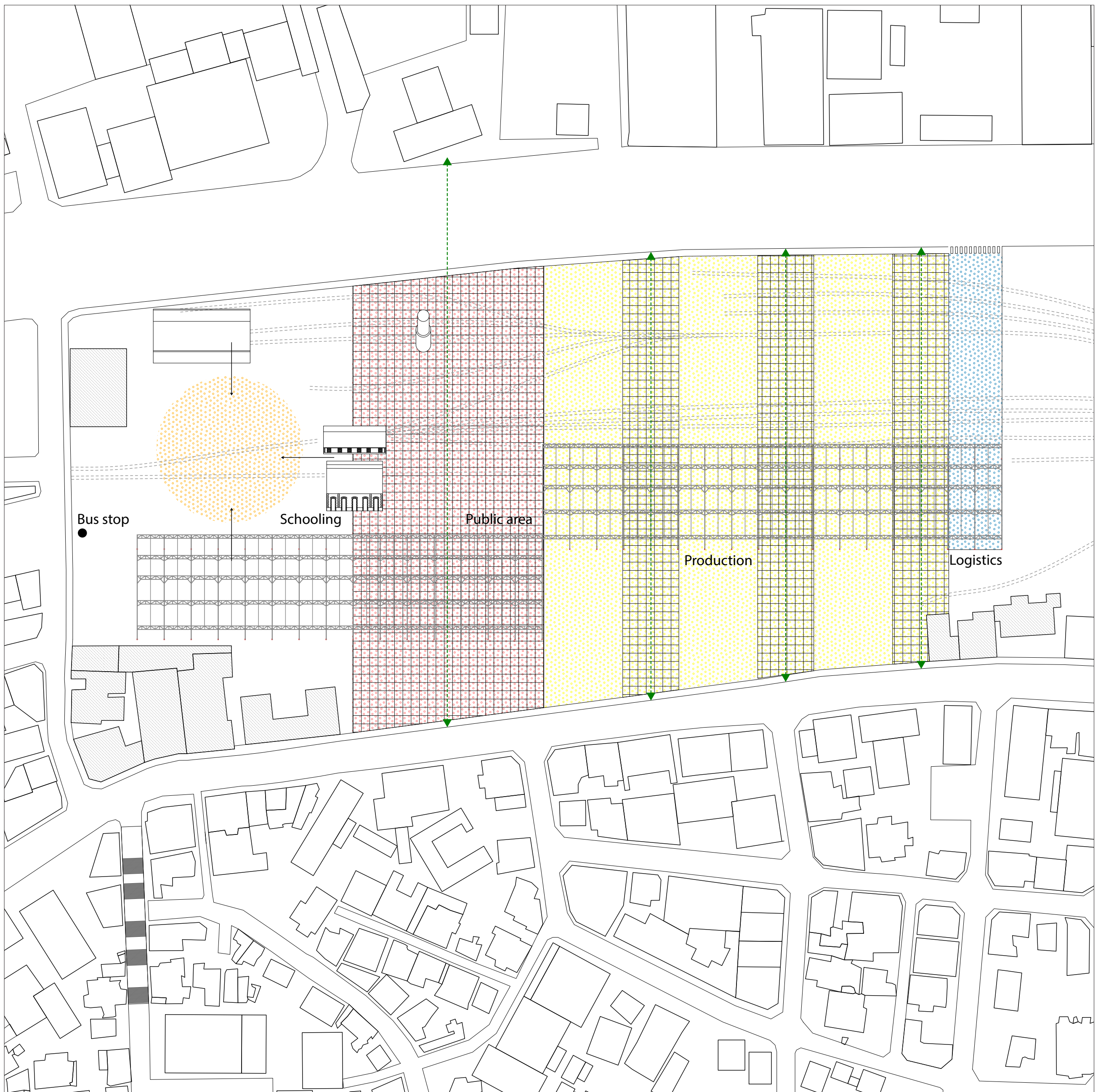
Present infrastructure → Removal of filling elements Interior perspective of the hangar



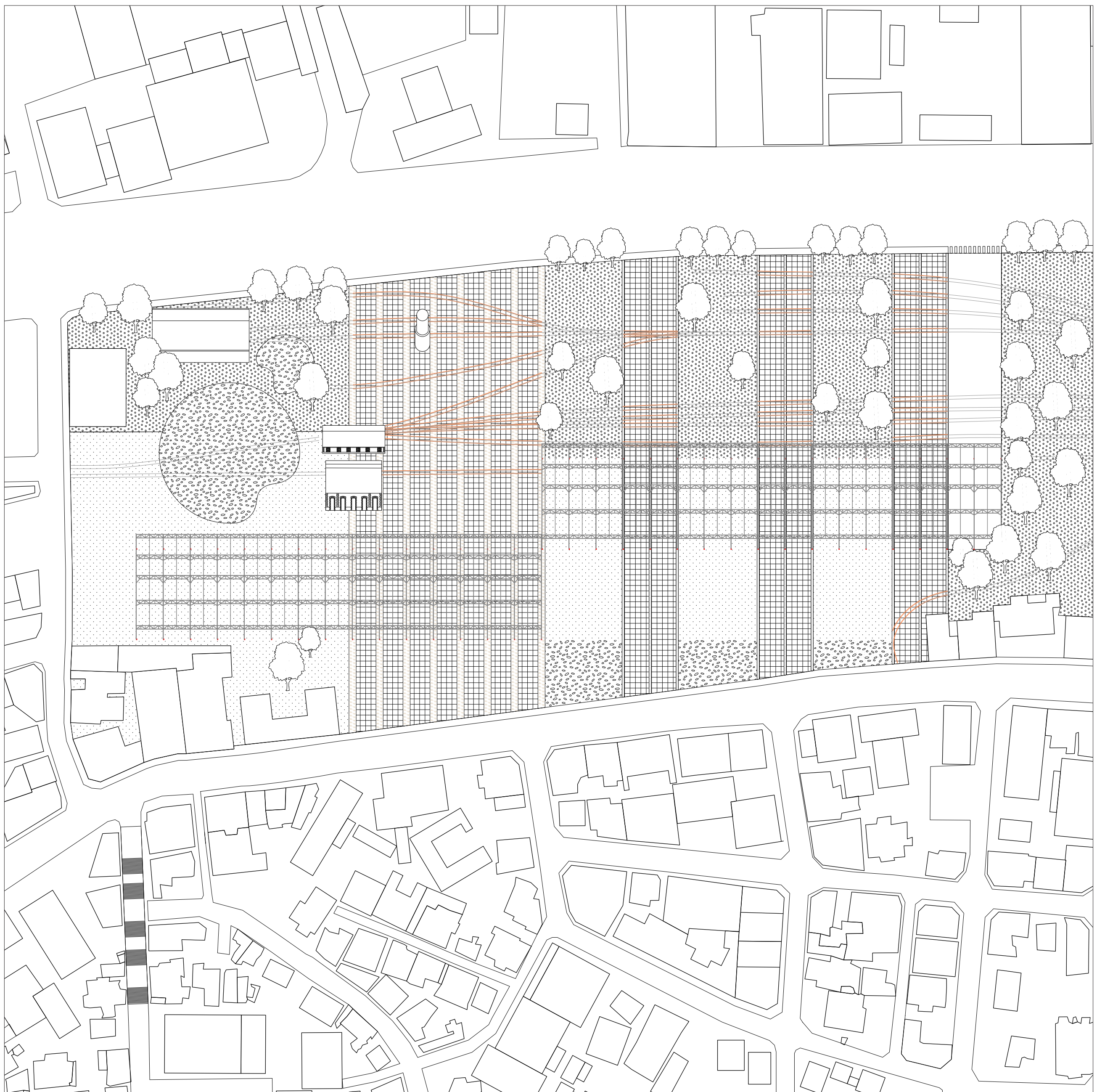
**Project proposal**

The project strives to create a manufacturing hub for textile production. Three essential programs are taken into account in respect to the project urban implementation. These programs include a schooling for design practices, a public space to promote showcasing in fashion and a space for production and logistics.

Production is designed in order to grow with demand. Area for production is therefore divided into units that can be replicated with time.



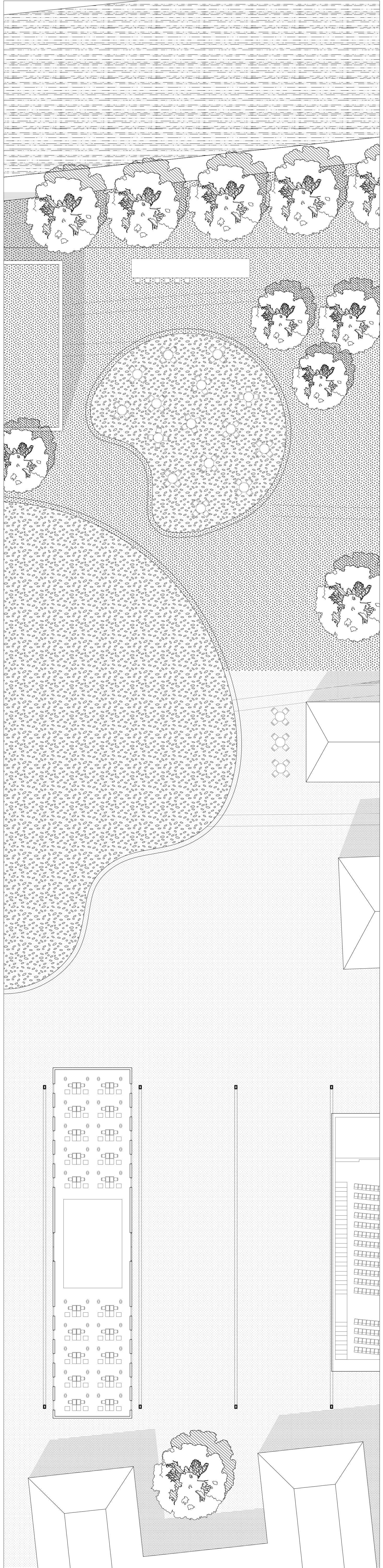
Programs distribution diagram



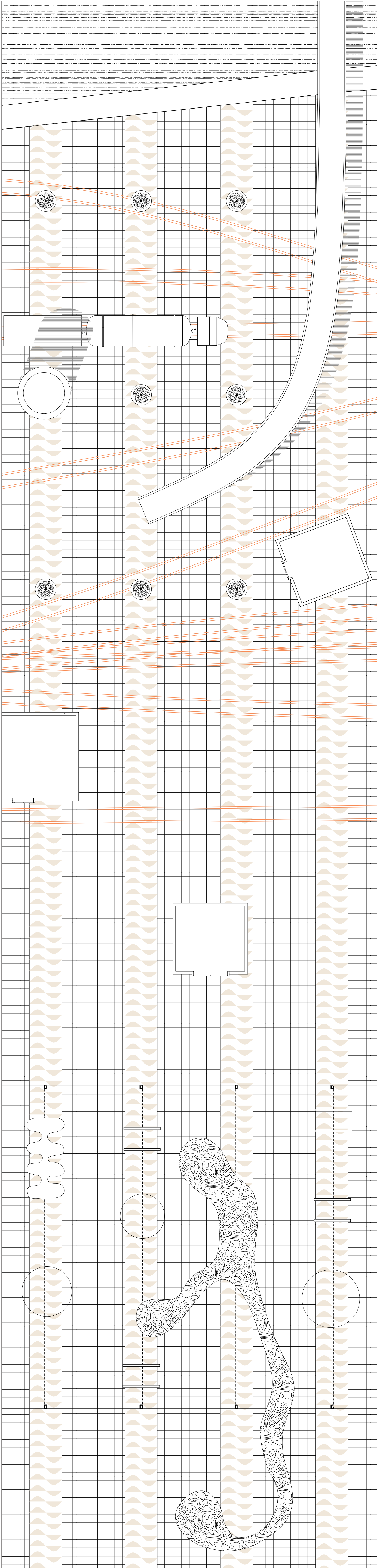
Landscaping diagram



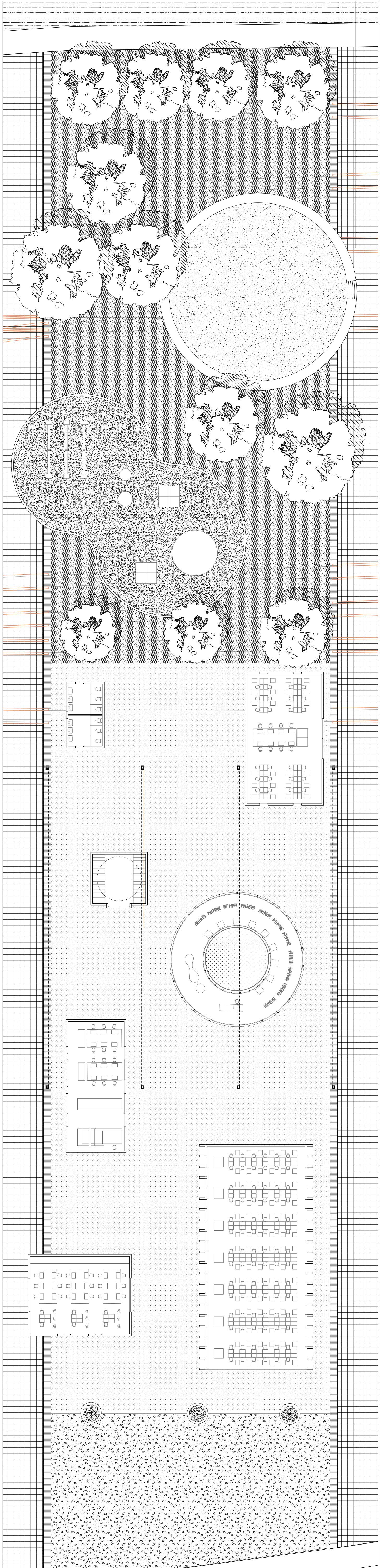
Materials



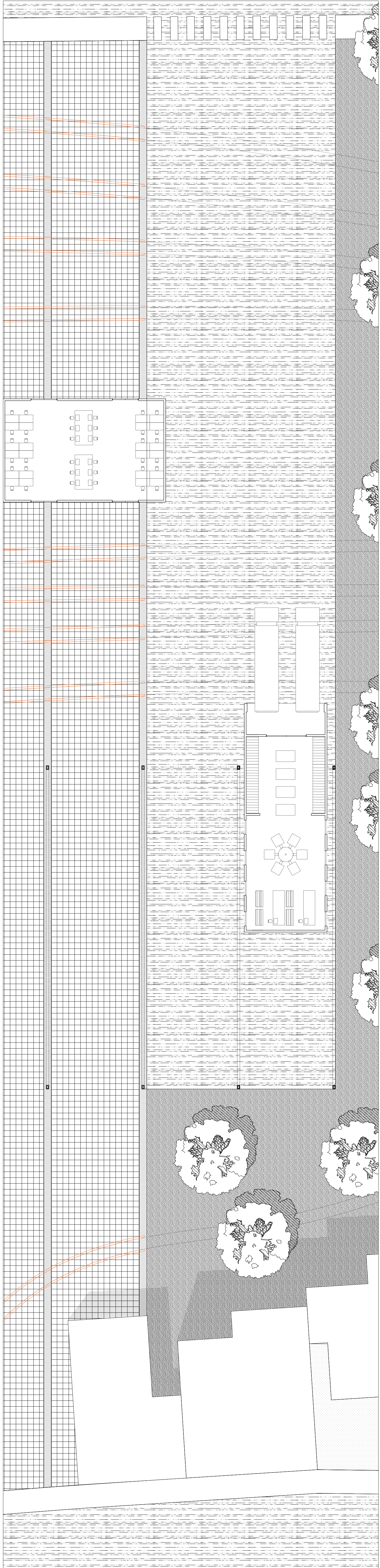
Sewing school



Public area for exposition



Manufacturing unit



Logistics and management



Elements for manufacturing

