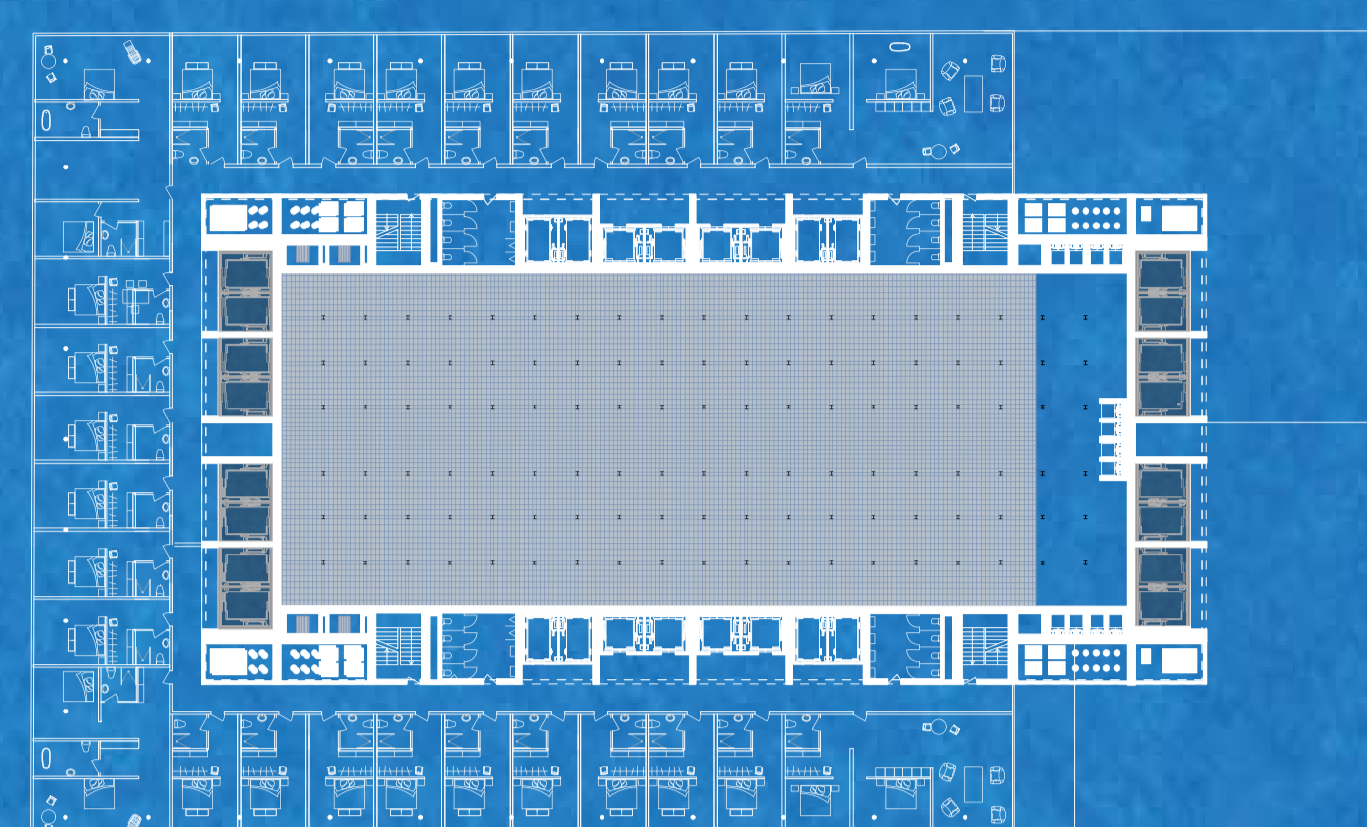
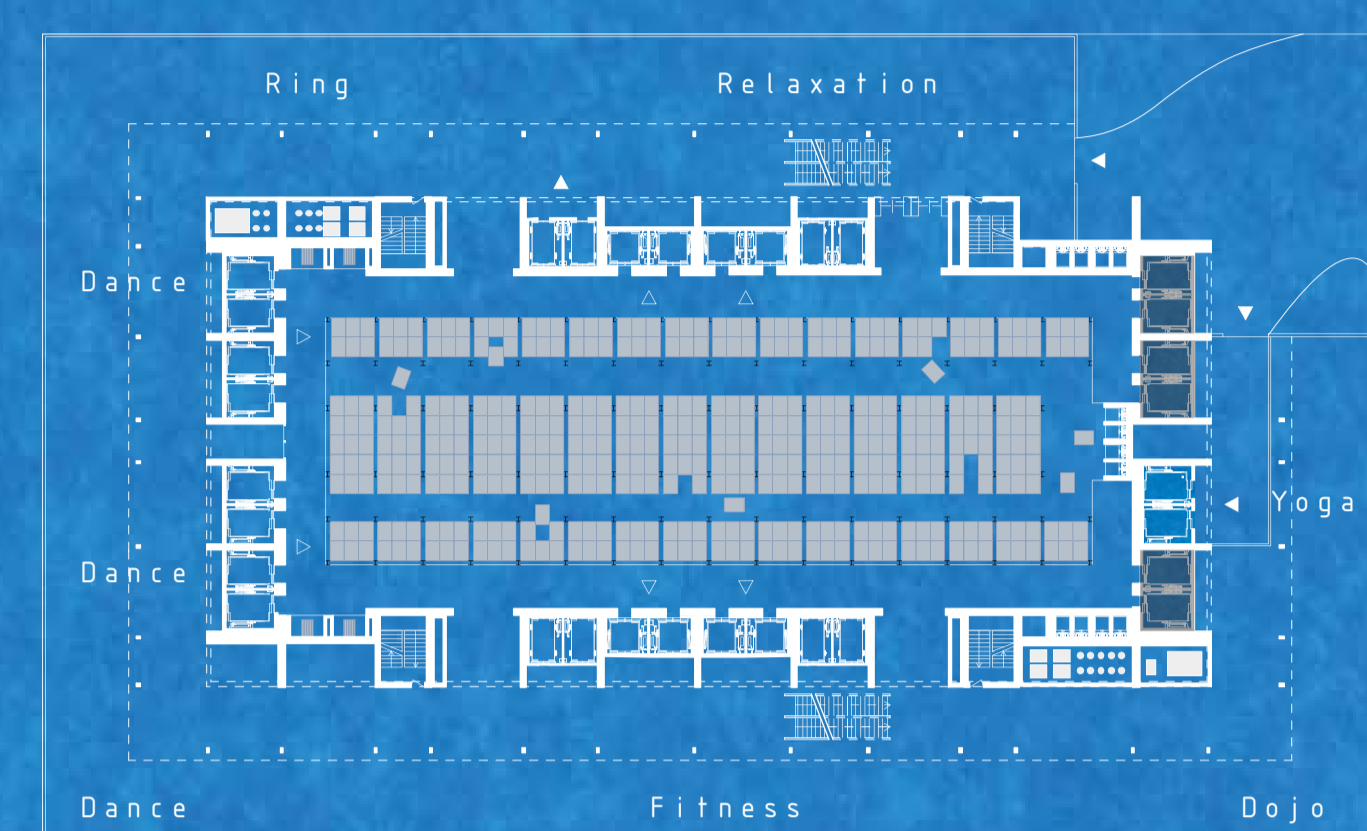


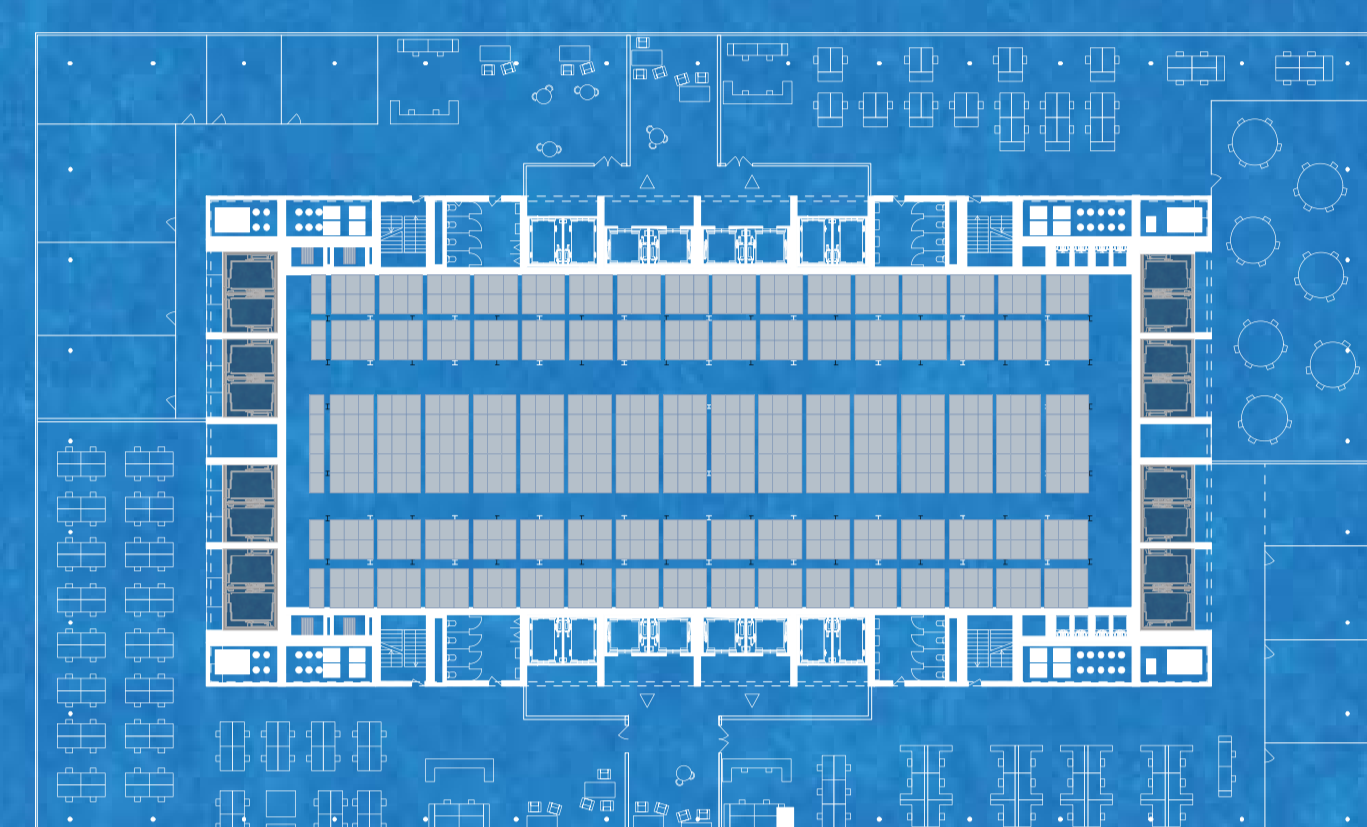
43 Skylobby 4, Accueil hotel, Restaurant, Bar 1.500



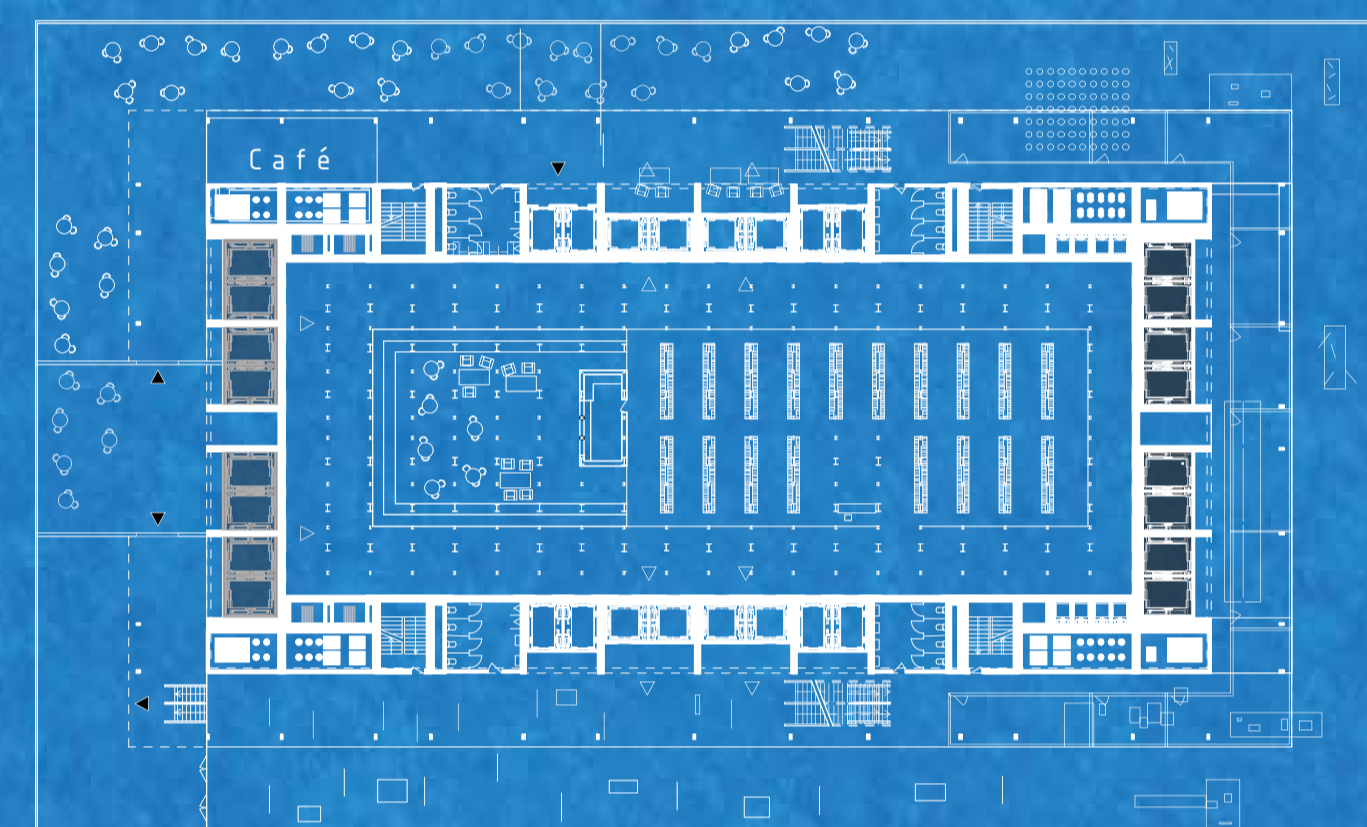
41 Skylobby 2, Espace dédié au sport 1.500



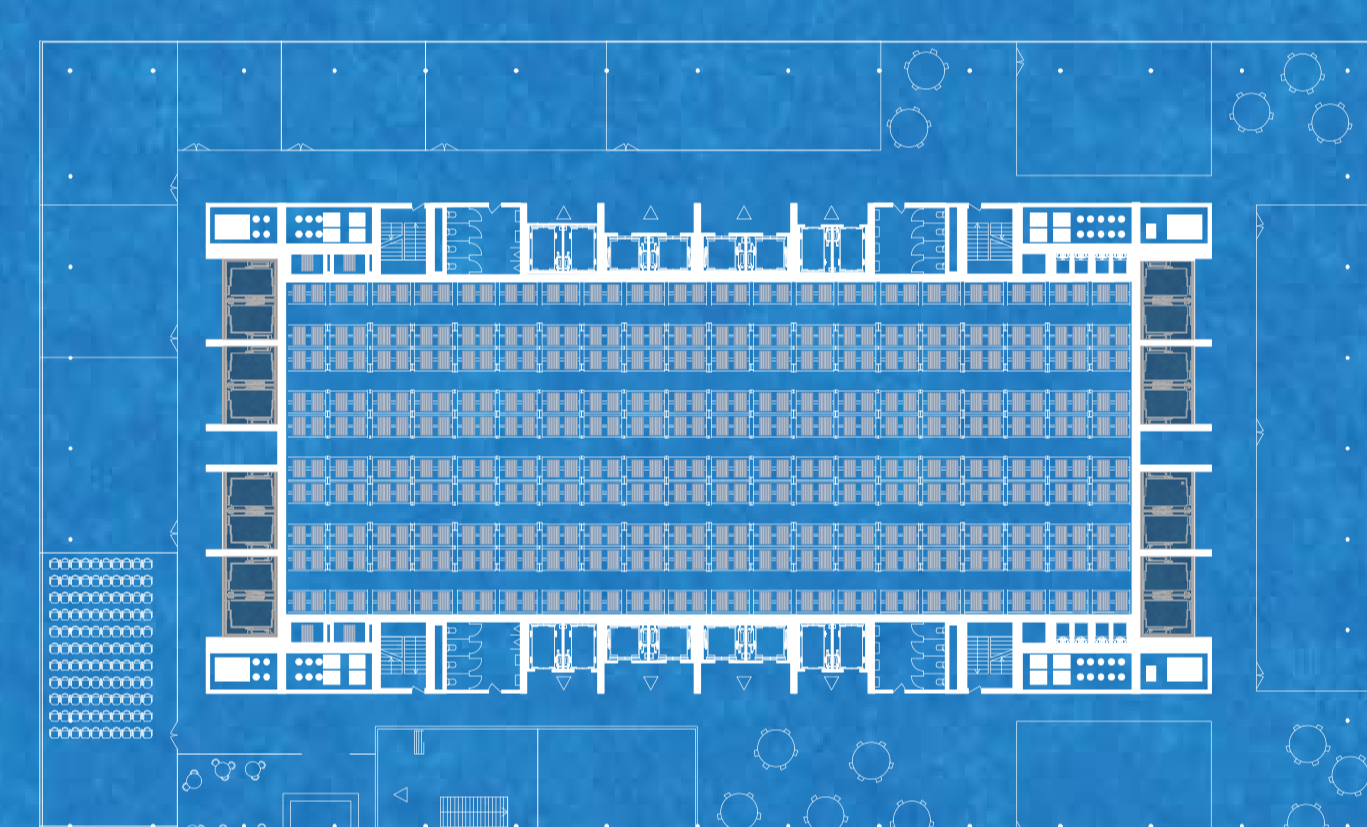
40 Skylobby 1, Espaces d'exposition et librairie commune 1.500



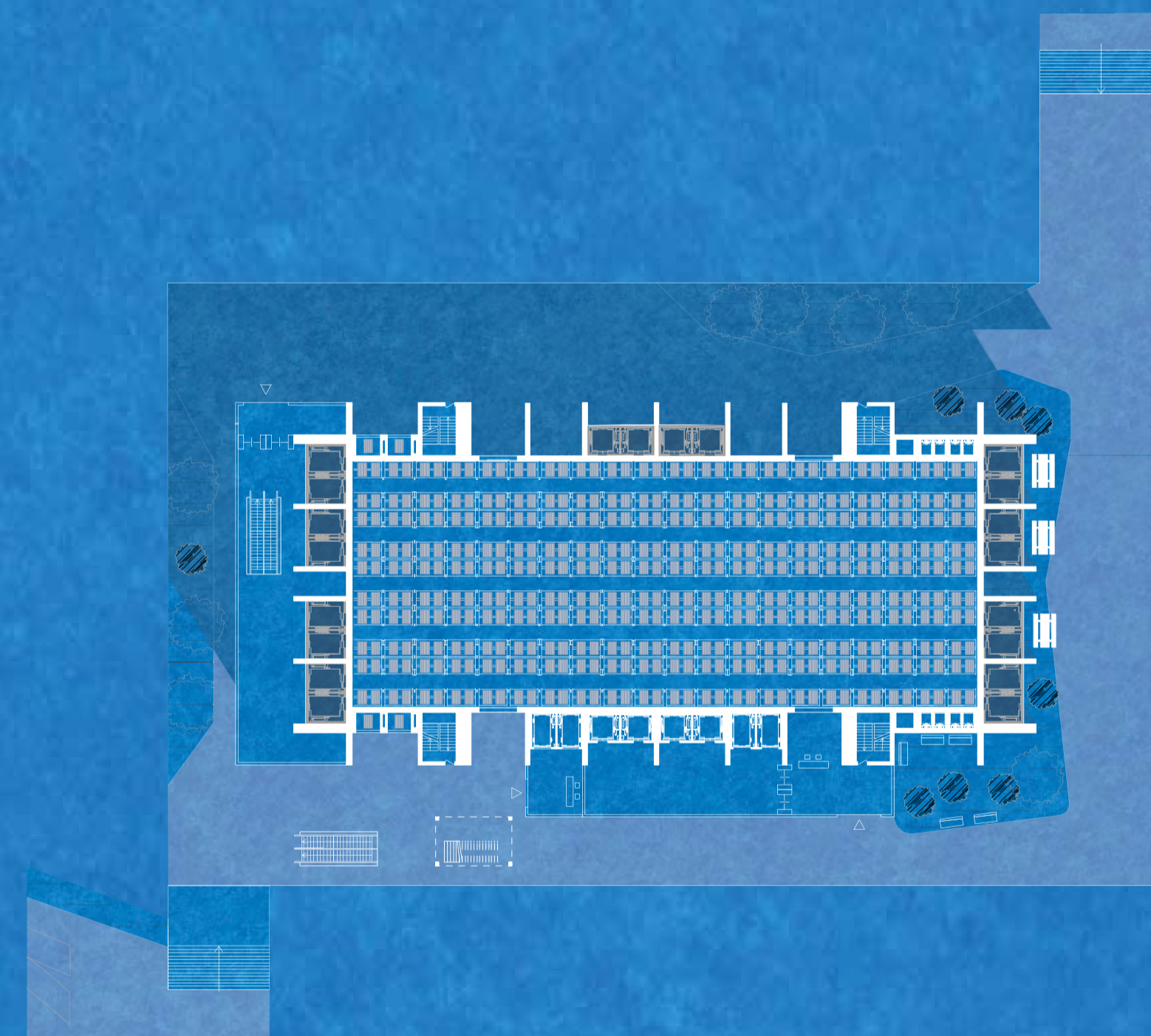
22 Etage type de bureaux 1.500



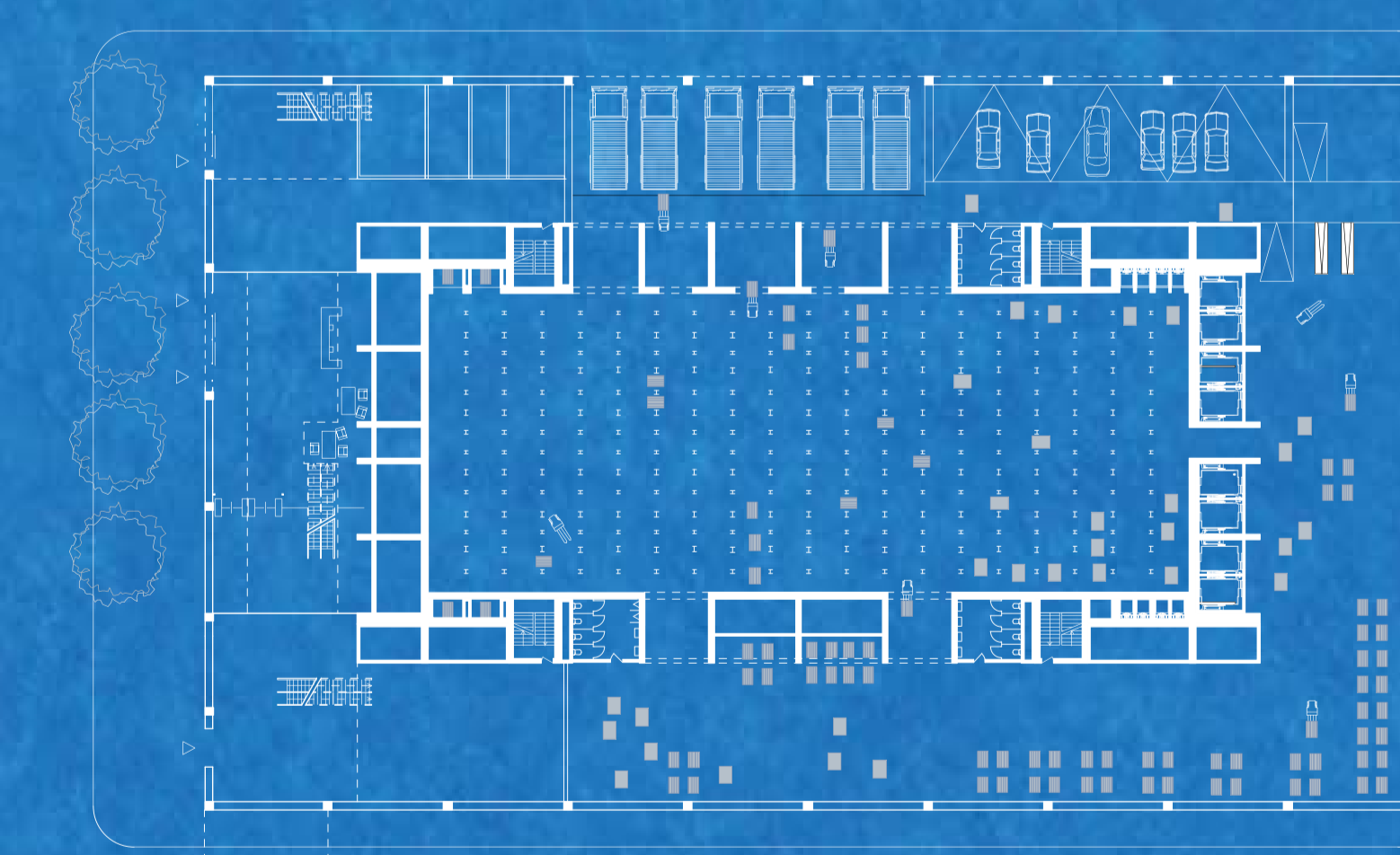
20 Skylobby 1, Espace d'exposition et librairie commune 1.500



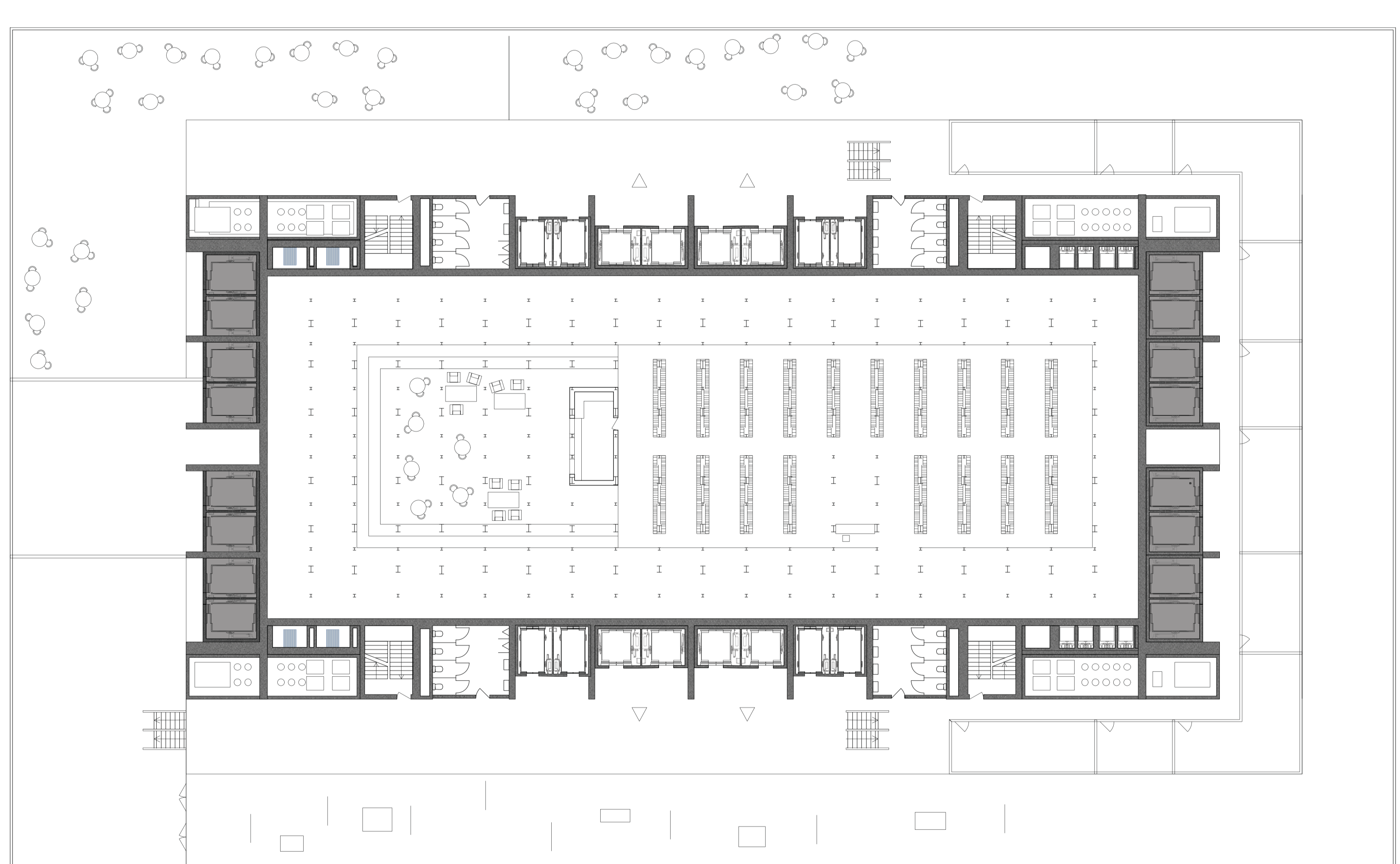
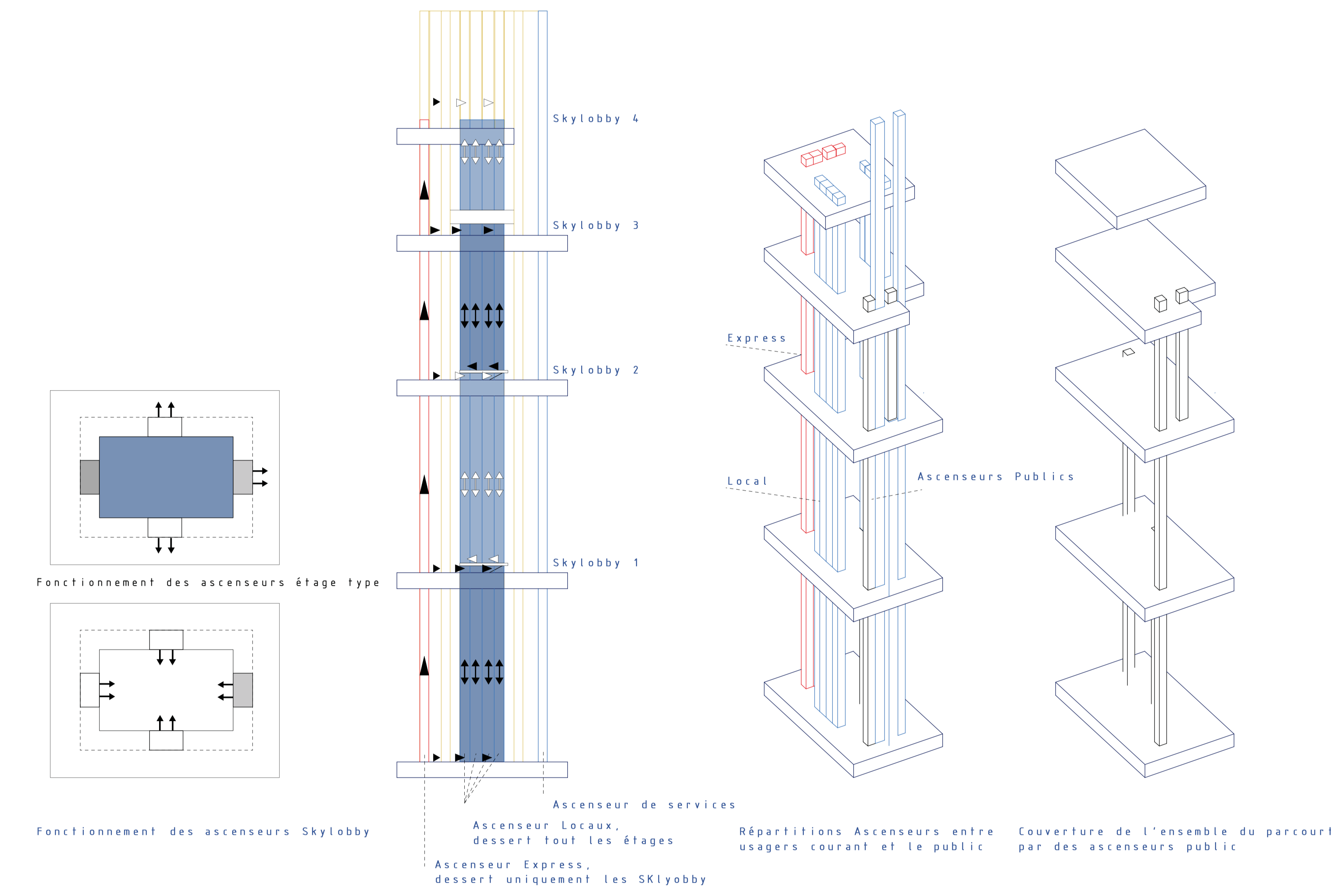
4 Etage Type Fashion Institute of Technology 1.500



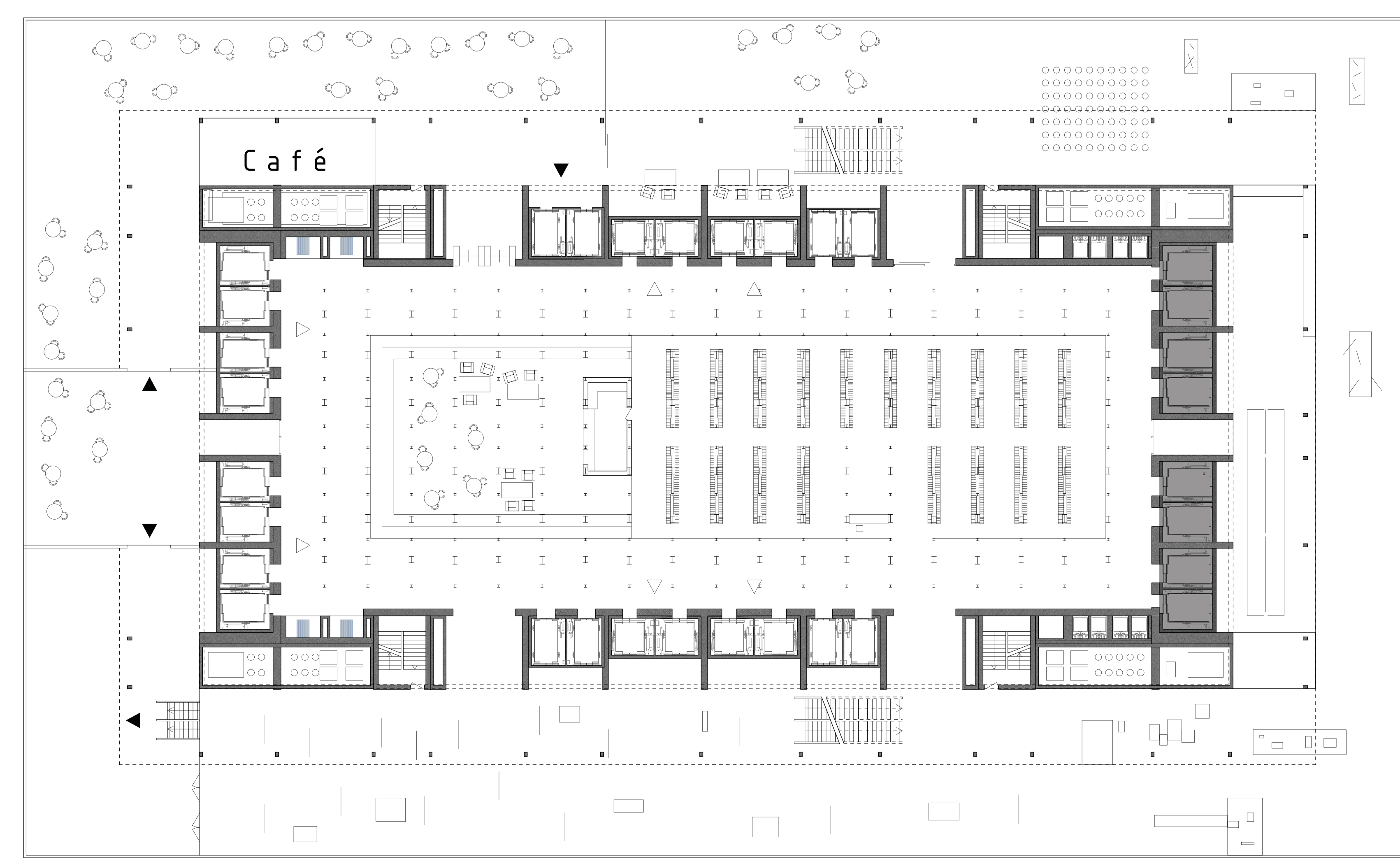
3 Espace extérieur connecté à la High-Line 1.500



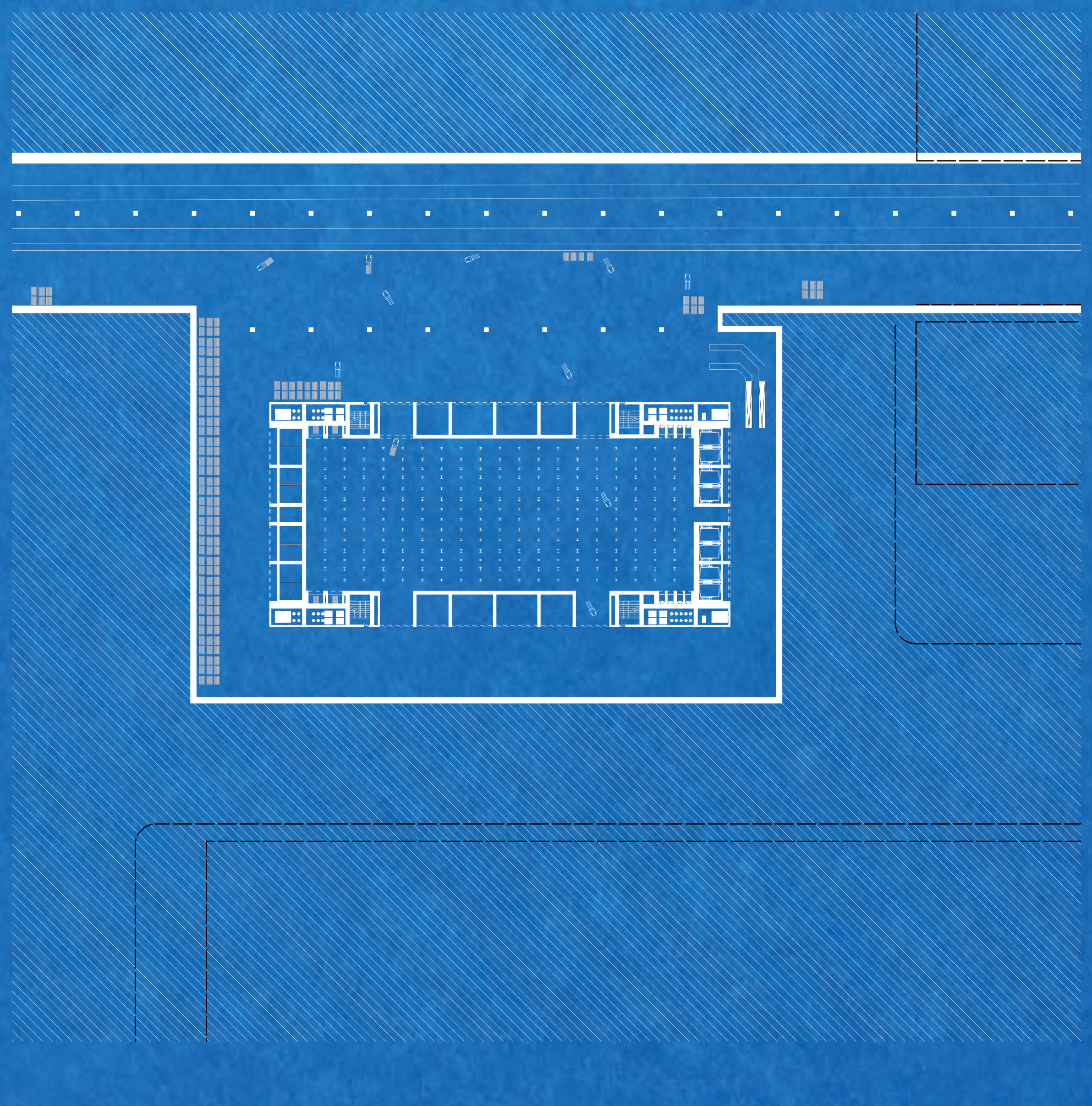
1 Entrée depuis la 10th av. 1.500



Sky-lobby 1.2 Public, Espace interaction entre la promenade verticale, les exposition de la "Fashion Institute of Technology" et les bureaux qui se trouvent au dessus



Sky-lobby 1 Public, Espace interaction entre la promenade verticale, les exposition de la "Fashion Institute of Technology" et les bureaux qui se trouvent au dessus



1 Sous-sol 1.500