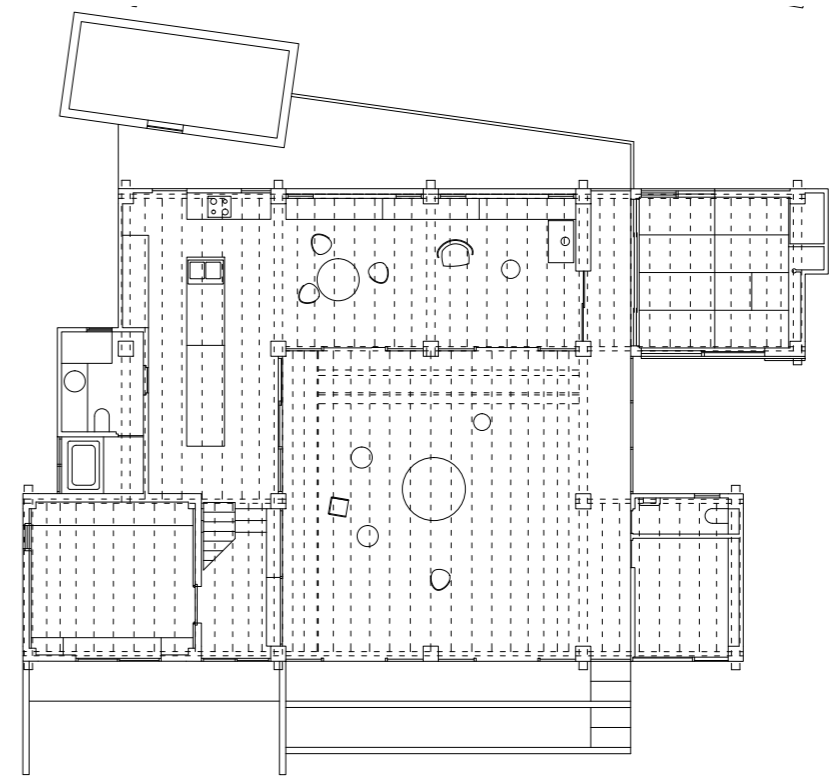




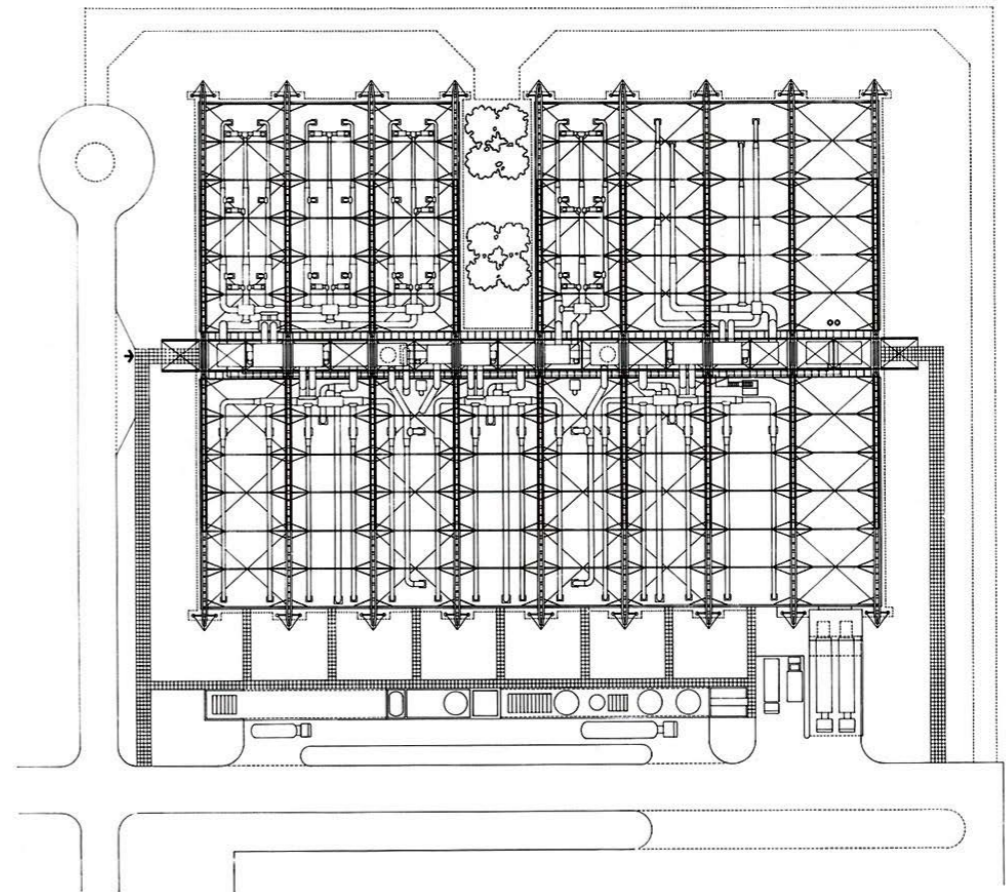
H. Wakin  
12.01.2017

Fragments  
M-2,  
the inter-level of  
shelter.

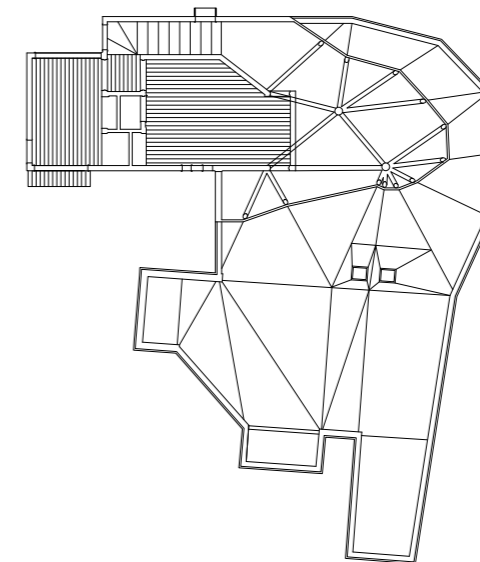
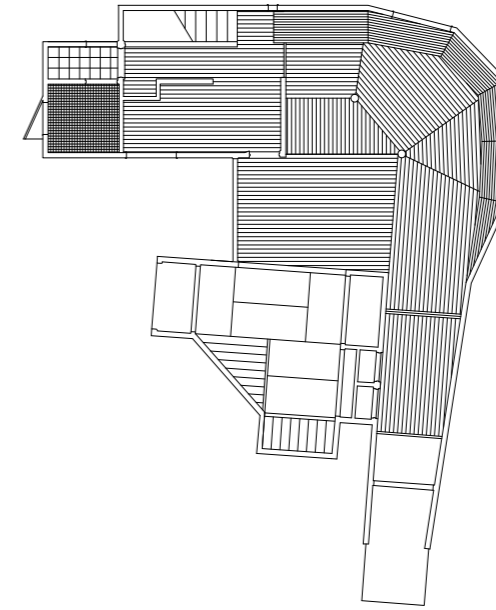
Toyo Ito, Silver hut.  
1984



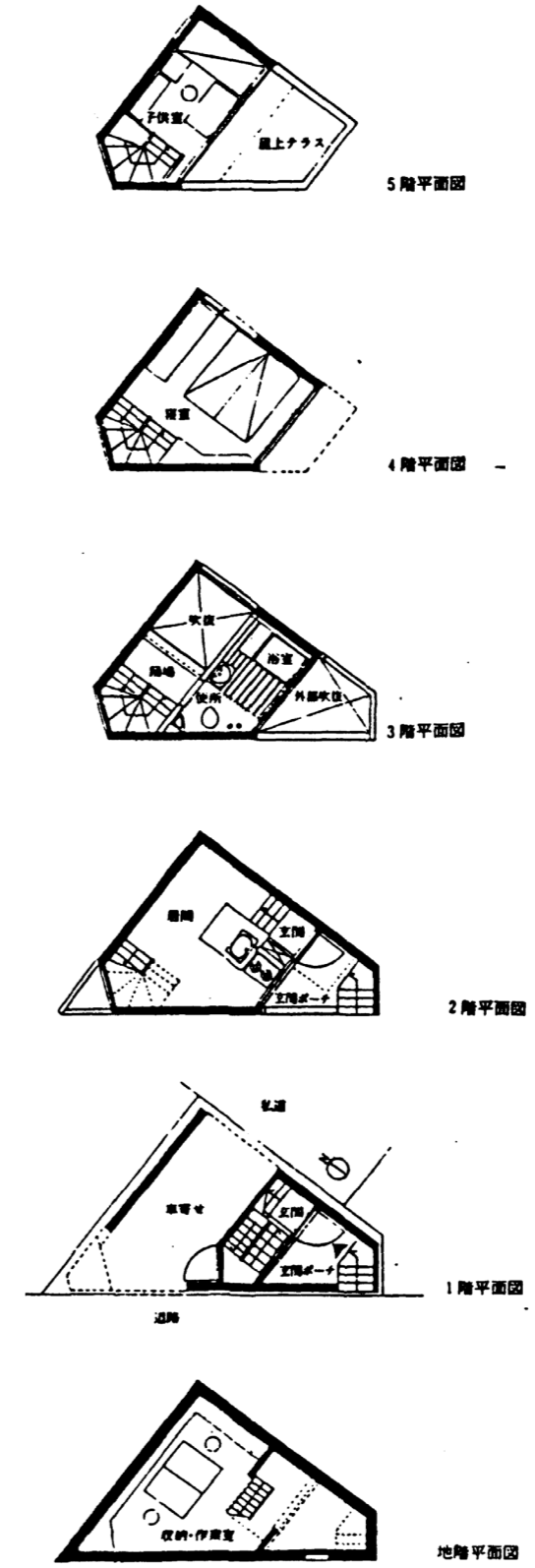
Richard Rogers,  
Inmos micropro-  
cessor factory,  
1982



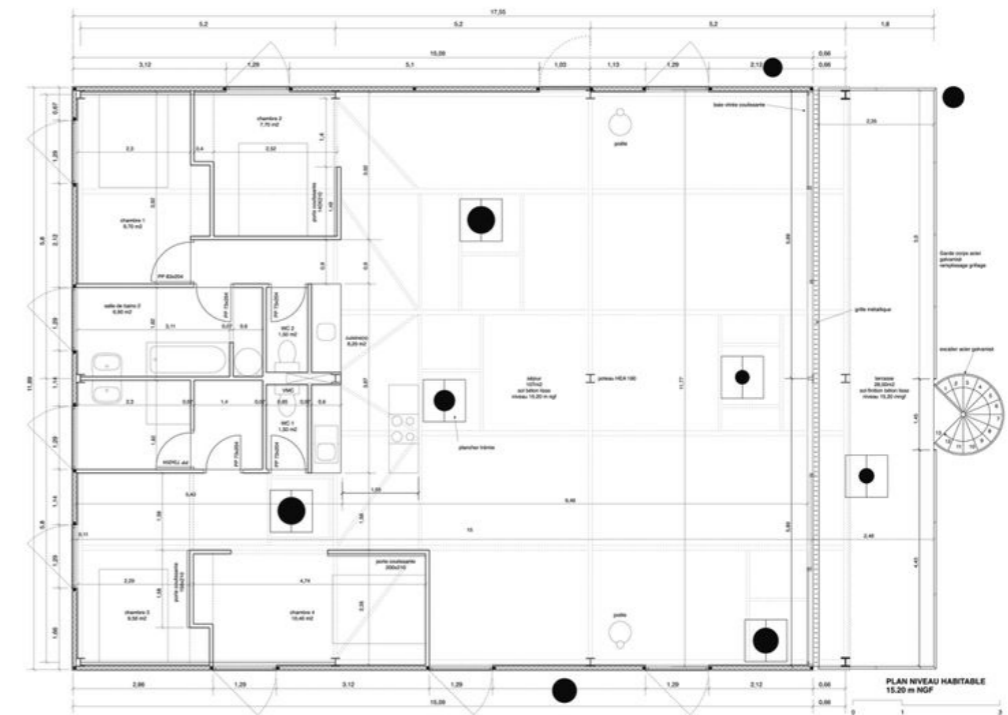
Hiroshi Hara, Ito house, 1967



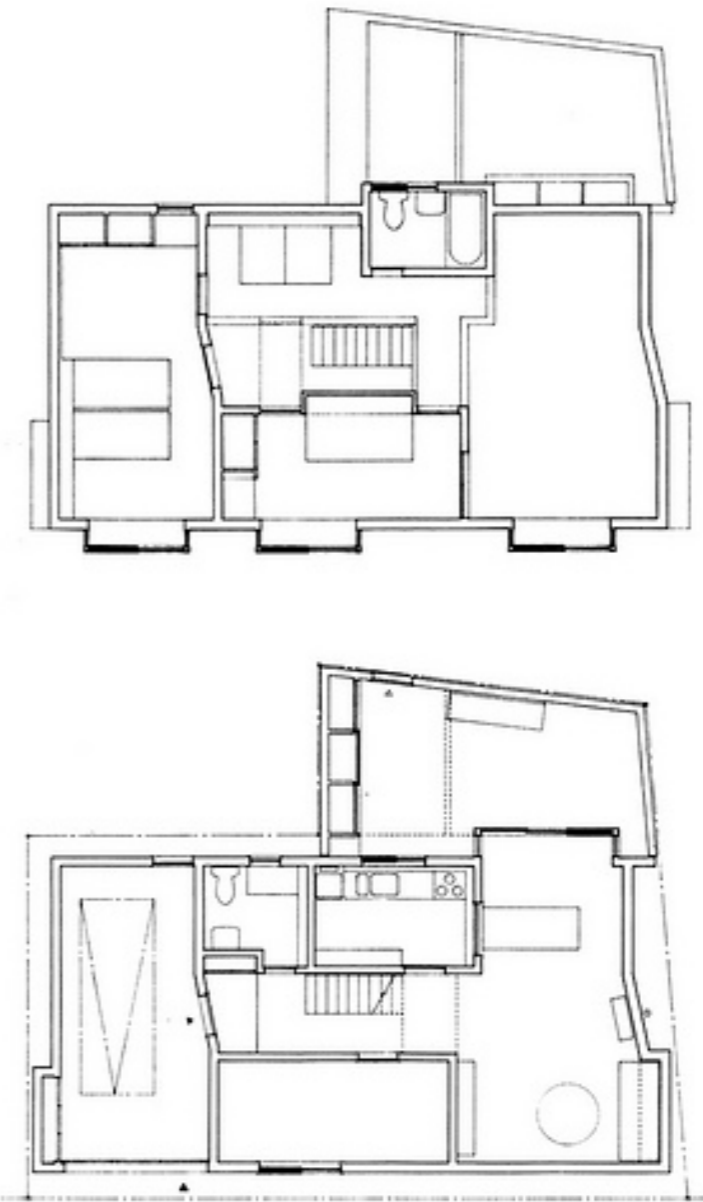
Takemitsu Azuma,  
Tower house, 1966



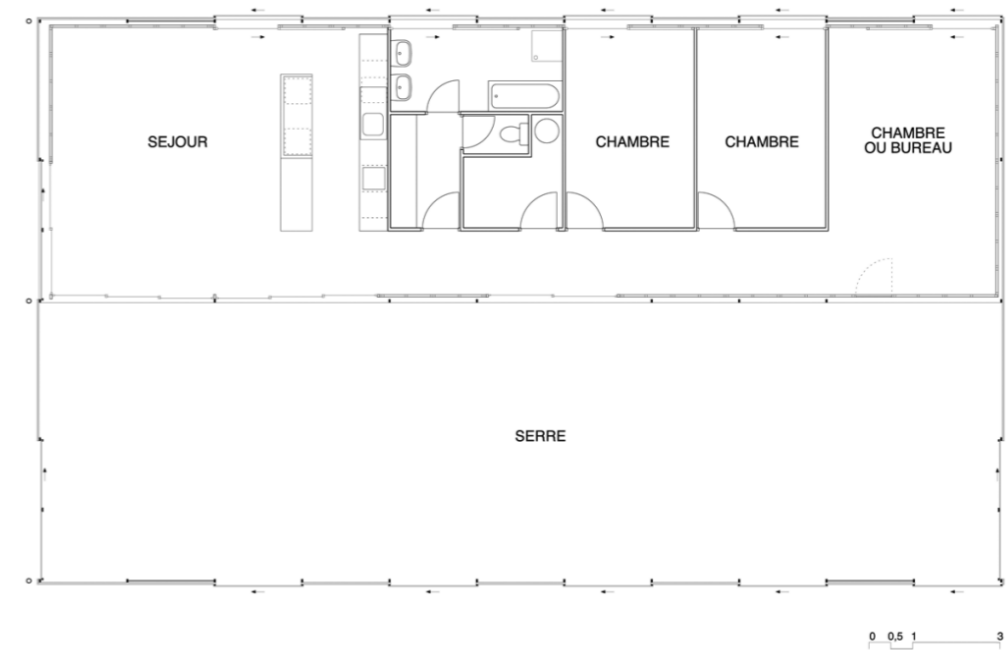
Lacaton & Vassal,  
Maison au Cap  
Ferret, 1998



Kazunari Sakamoto, Machiya in Minase, 1970

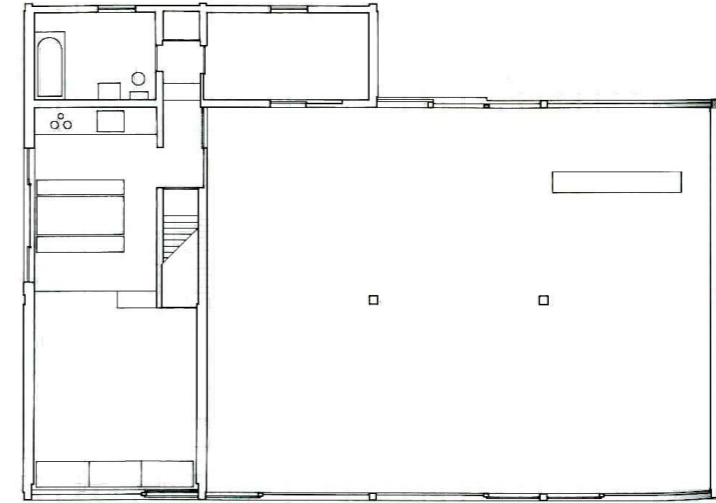


Lacaton & Vassal.  
Maison à Coutras.  
2000

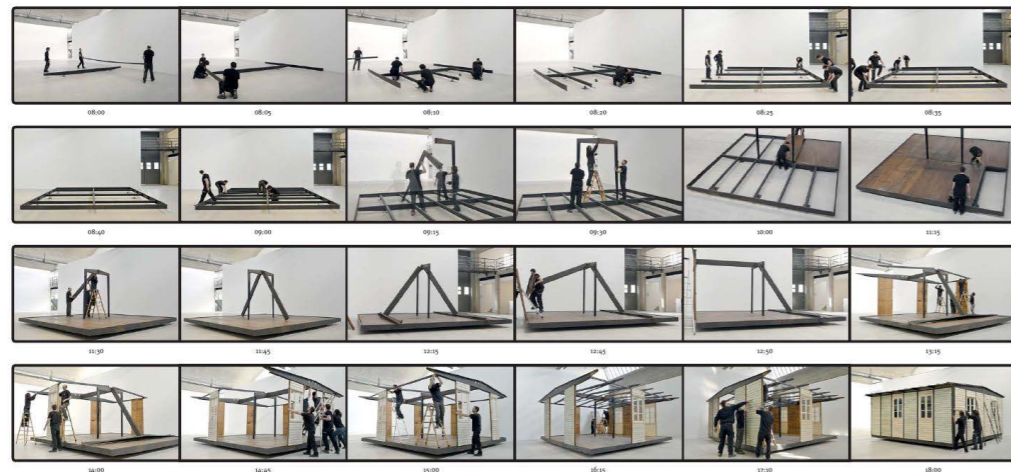




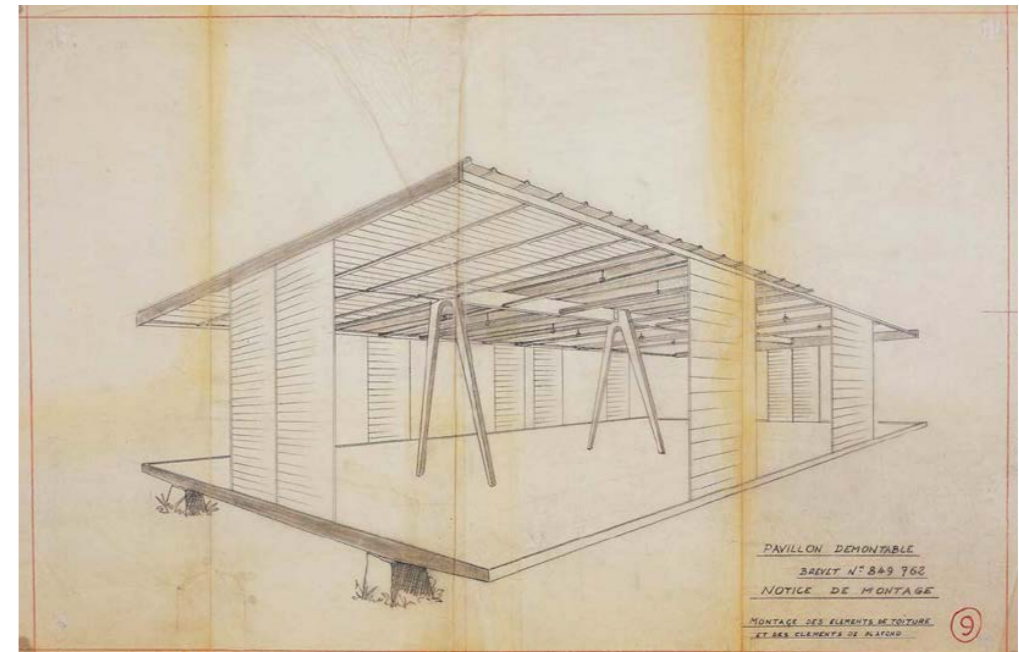
Kazuo Shinohara,  
Tanikawa house,  
1974



Jean Prouvé, Mai-  
son démontable,  
1944



Montage d'une maison démontable en 1944  
 D'après le film de Jean Prouvé, 1944  
 Assemblage et film de Jean Prouvé, 1944  
 D'après le film de Jean Prouvé, 1944



# The Neutral

