



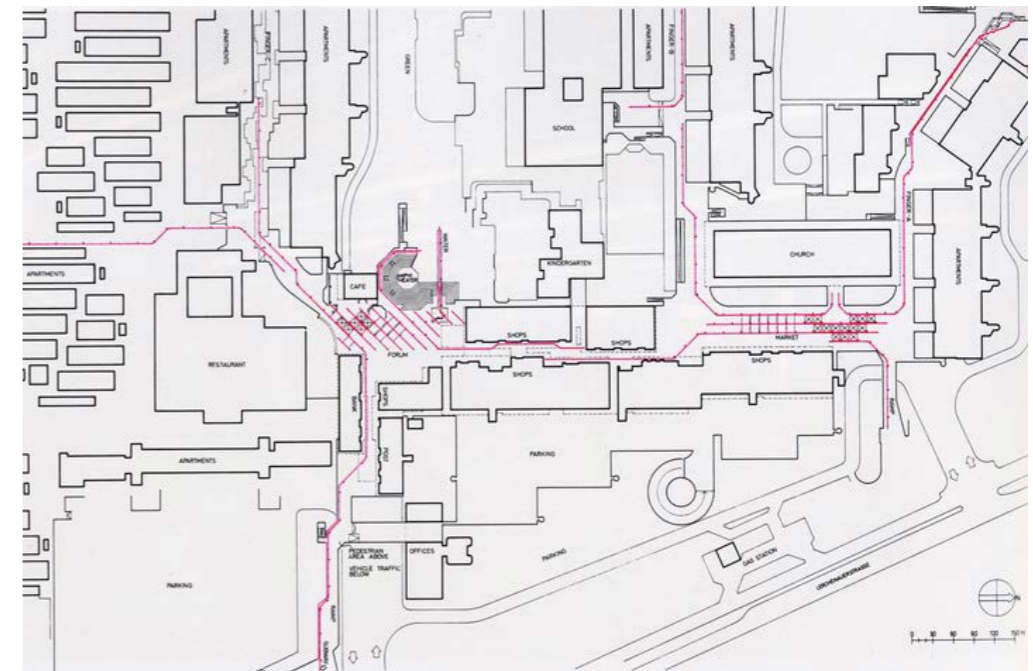
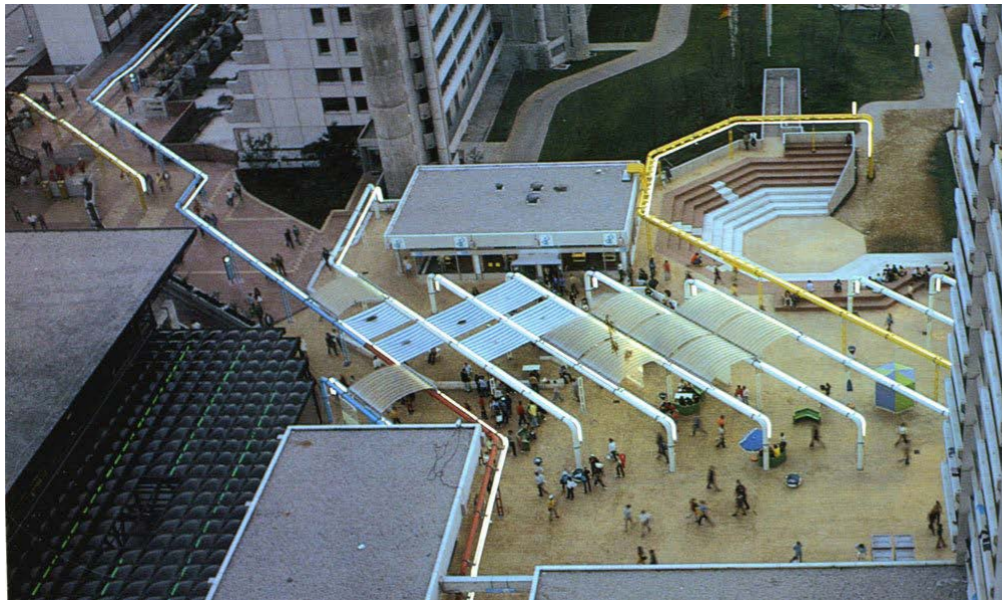
Fragments

At the

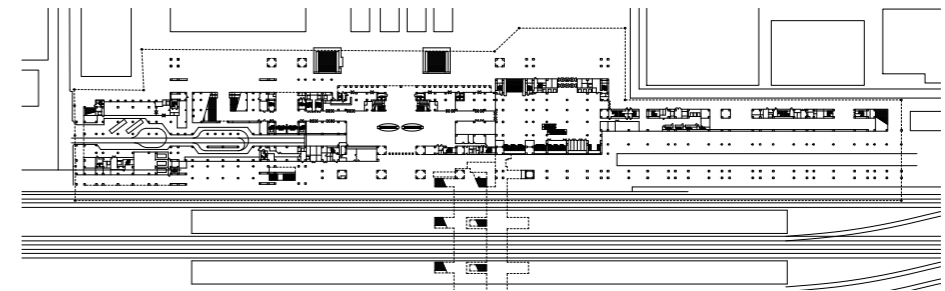
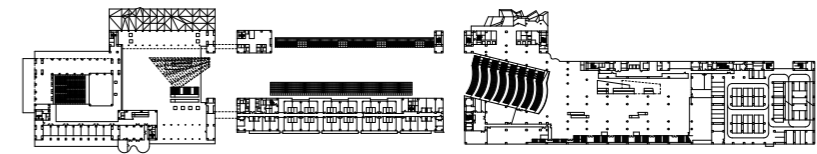
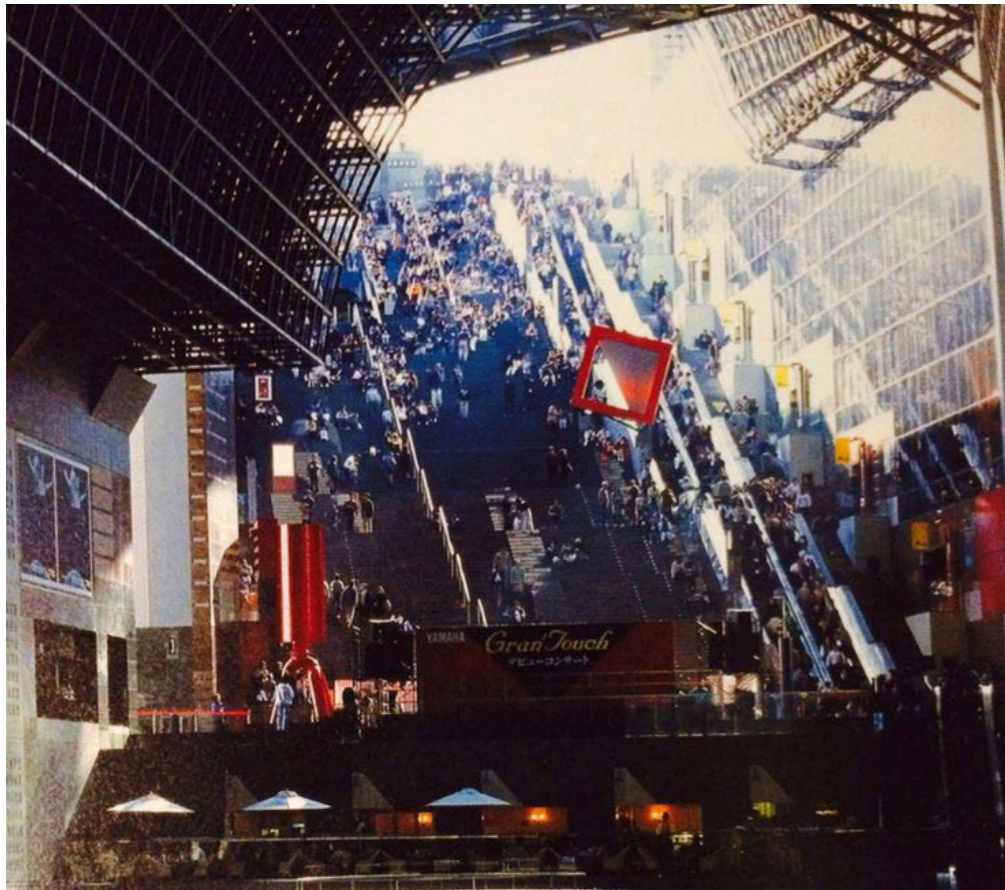
level of the out-

er wilderness.

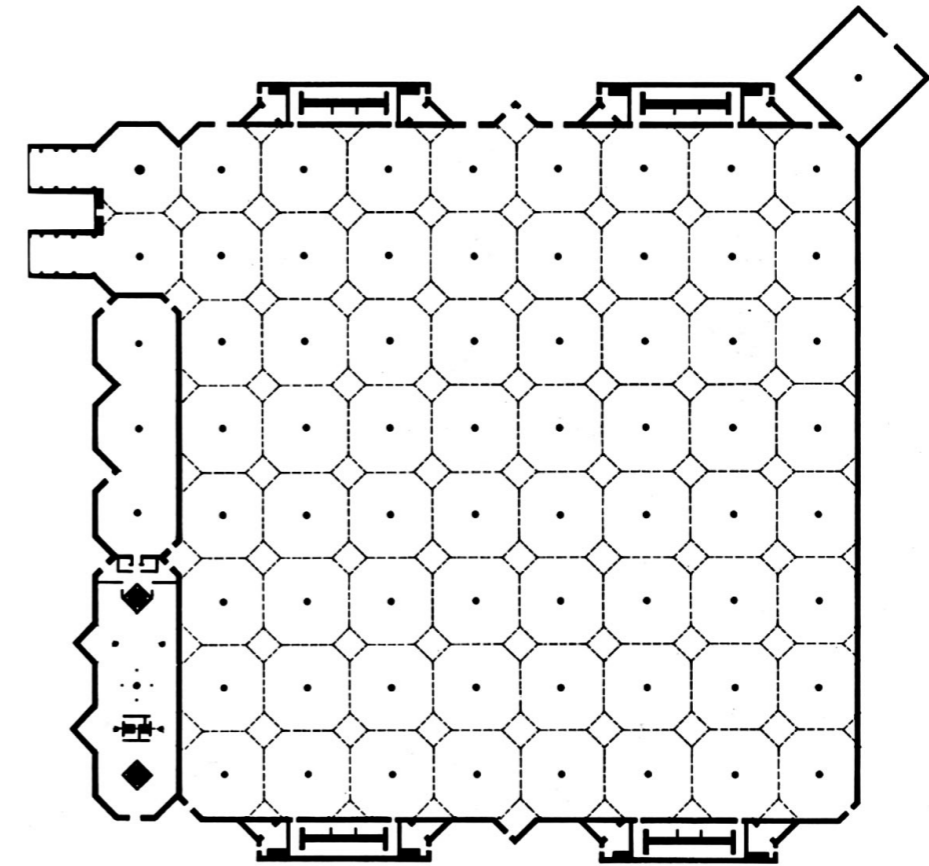
Hans Hollein, Media line, 1972



Hiroshi Hara, Kyoto Station, 1997



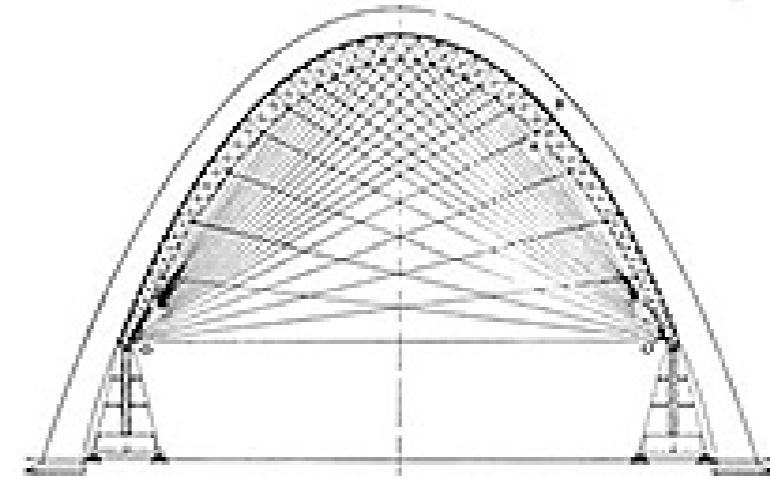
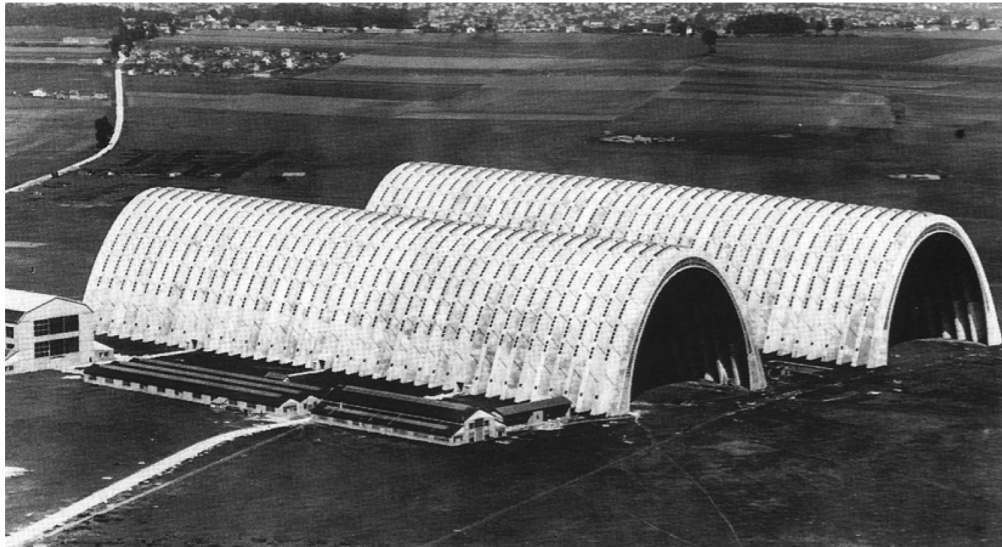
Louis Kahn, Olivetti-Underwood  
factory, 1970



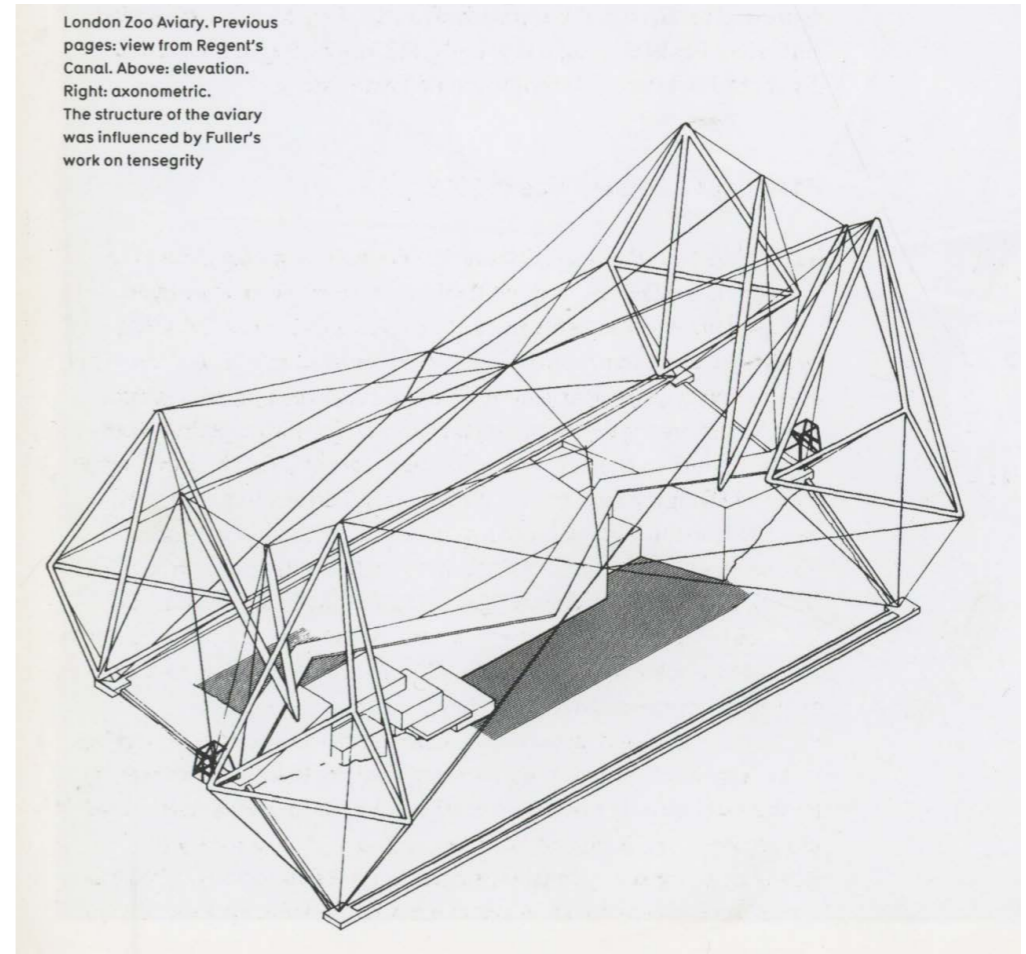
Elia Zenghelis,  
Katavos bay, 1985



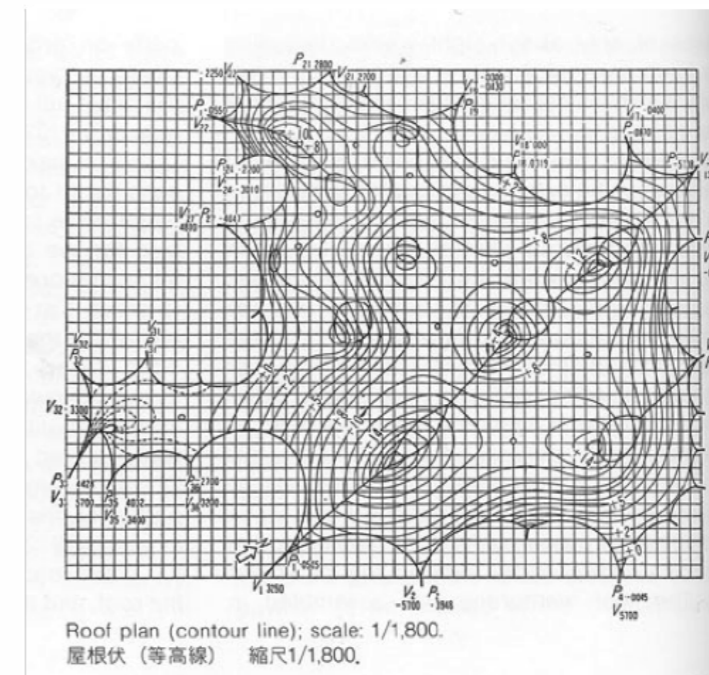
Eugène Freyssinet, Orly hangars,  
1927-1929



Cedric Price, Aviary at Regents Park Zoo, 1965



Frei Otto, Munich  
olympic stadium,  
1972





# The Neutral

