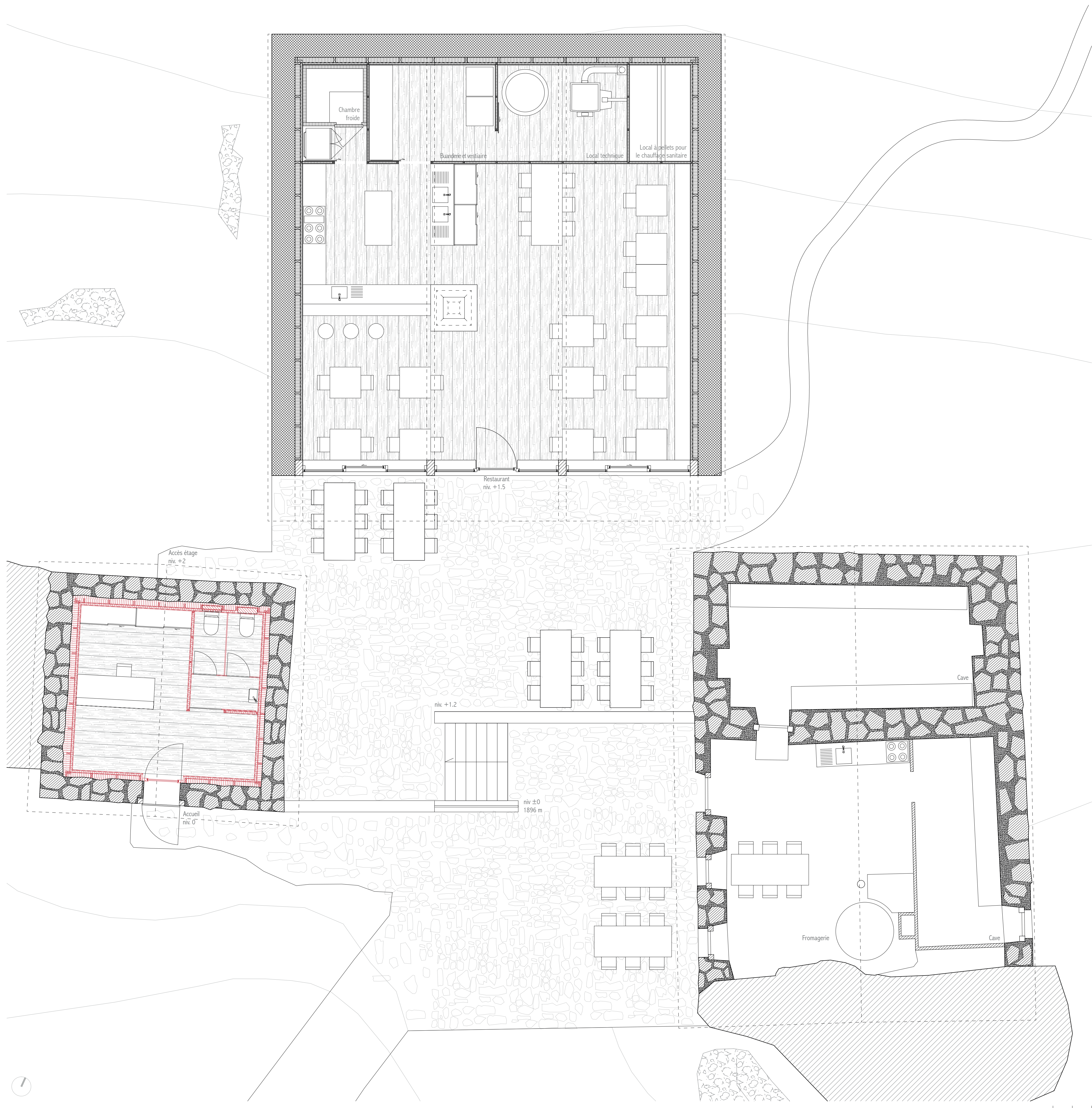
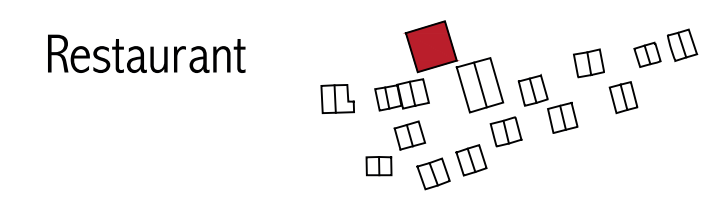


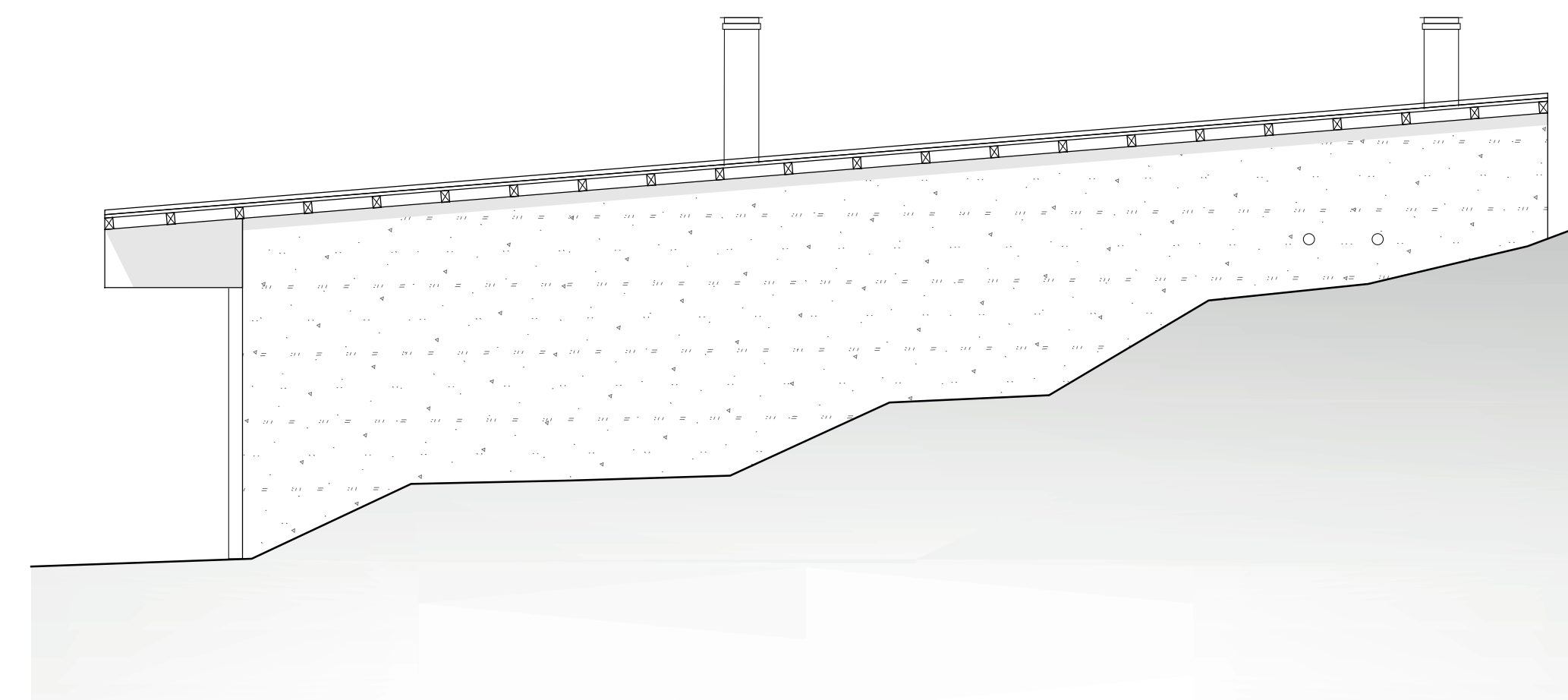
Élévation sud



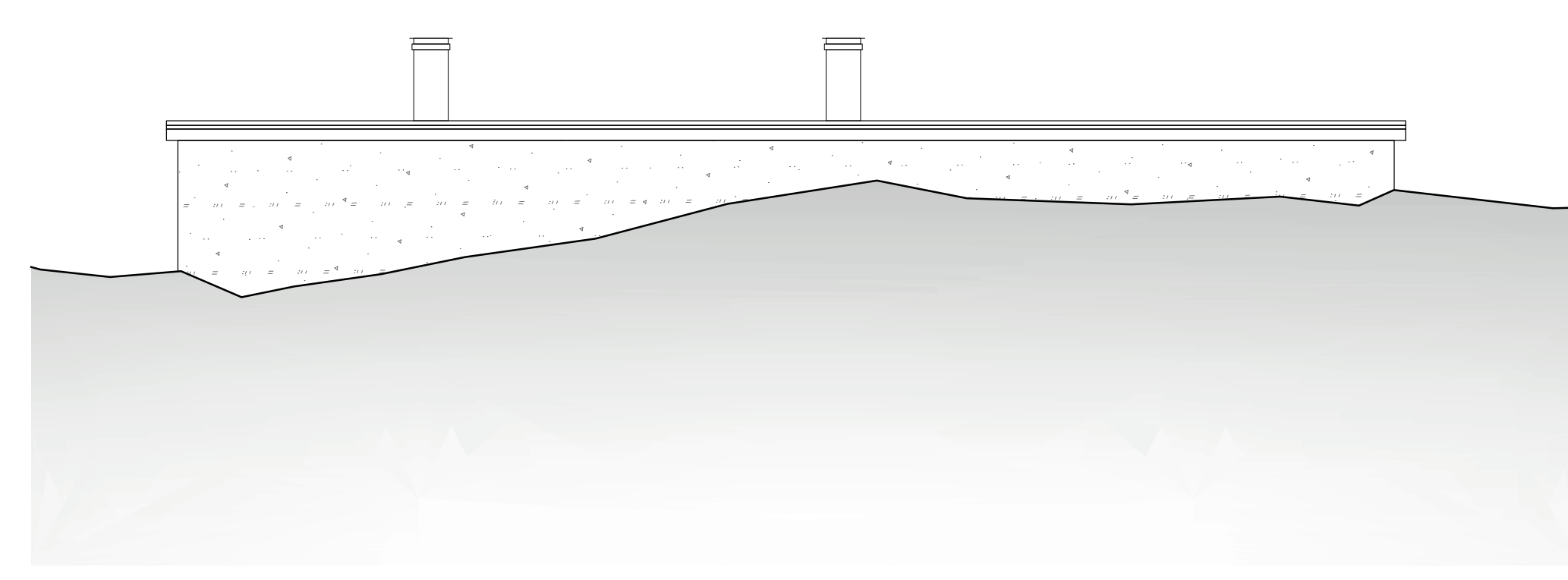
Plan du lieu central



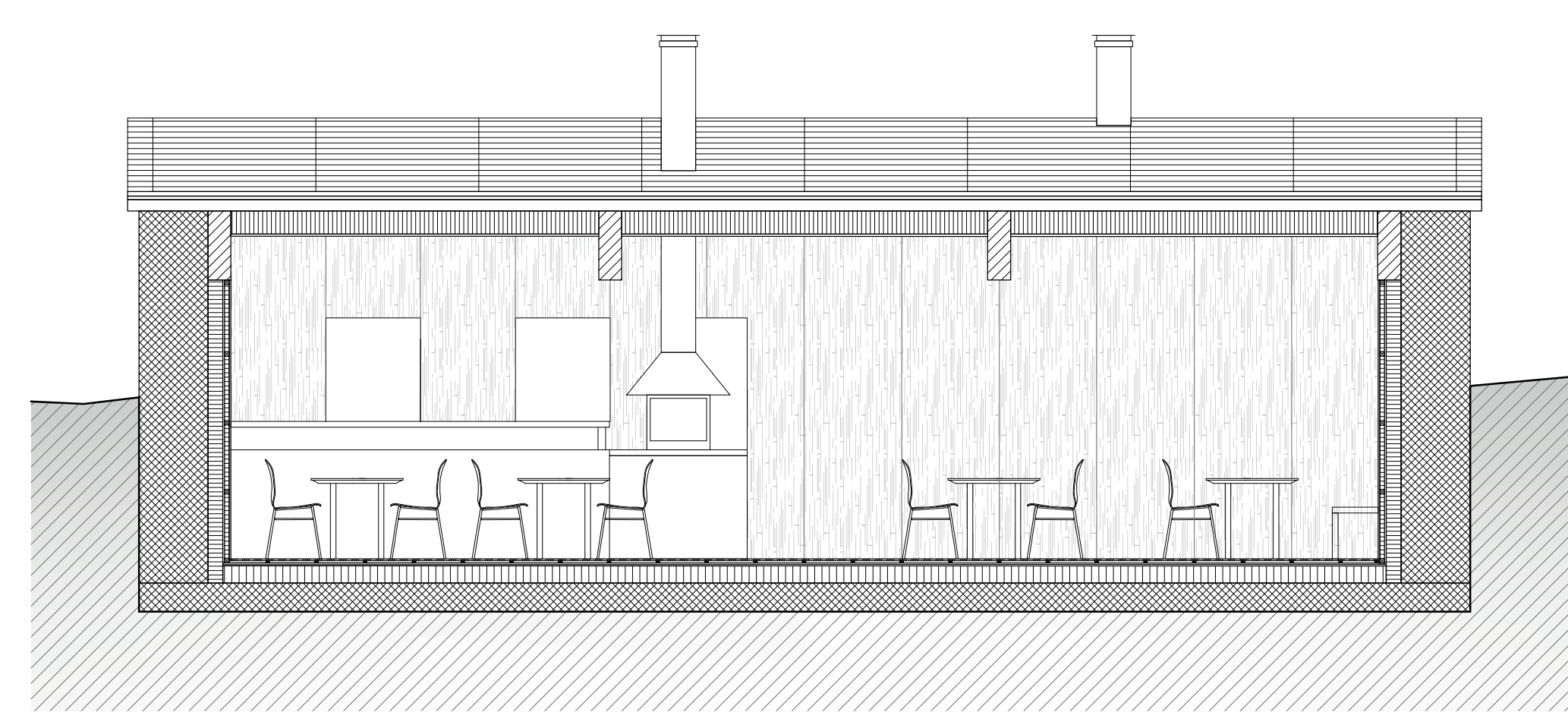
Restaurant



Façade est

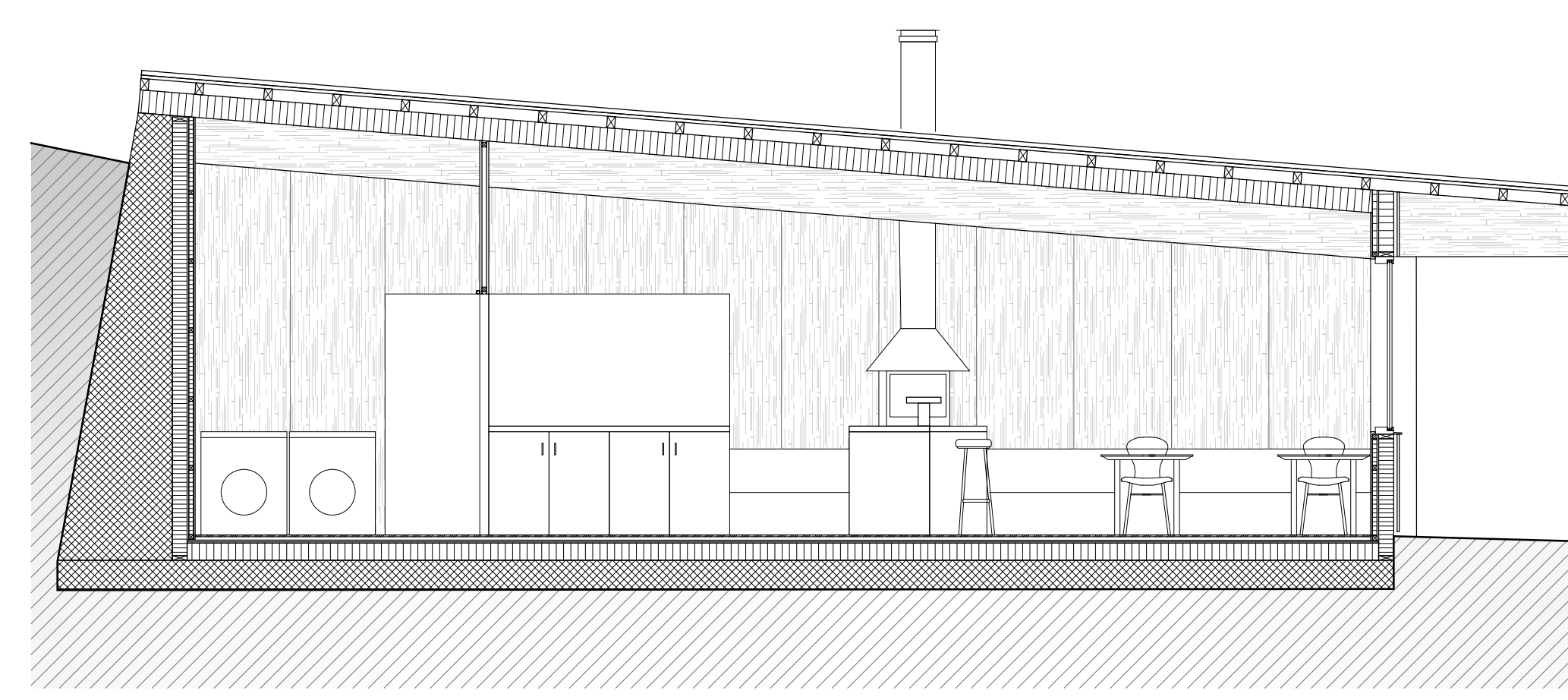


Façade nord



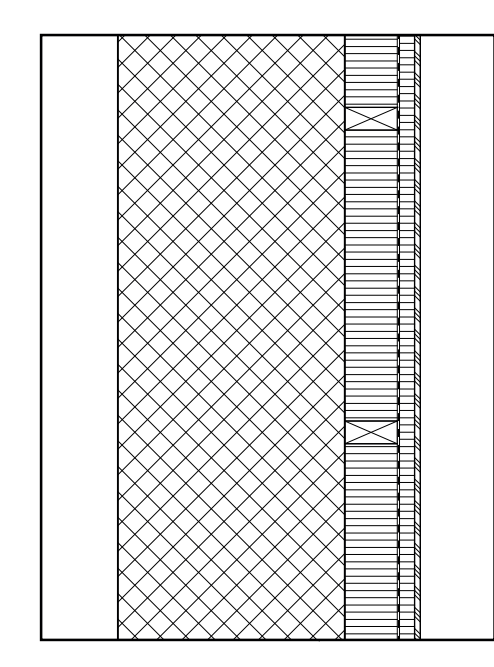
Coupe transversale

1:50 0 0.5 1 m



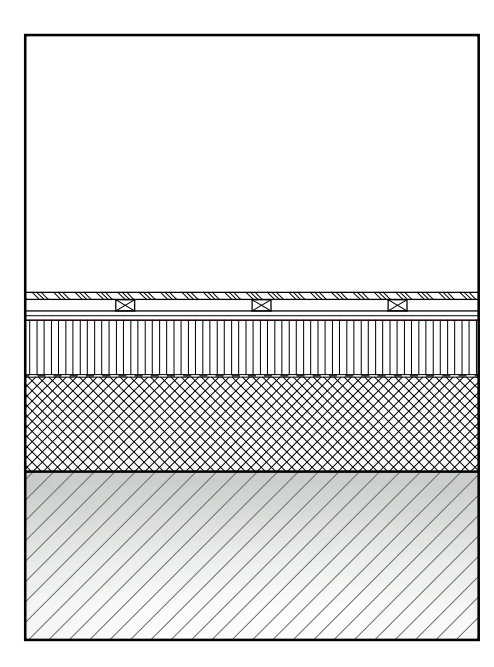
Coupe longitudinale

1:50 0 0.5 1 m



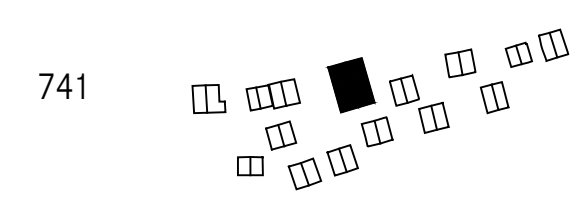
Détails constructifs

Mur :
mur en béton tassé 60 cm
ouate de cellulose 14 cm
pare-vapeur
lattage horizontal 4 cm
panneau 3 plis sapin 1.9 cm

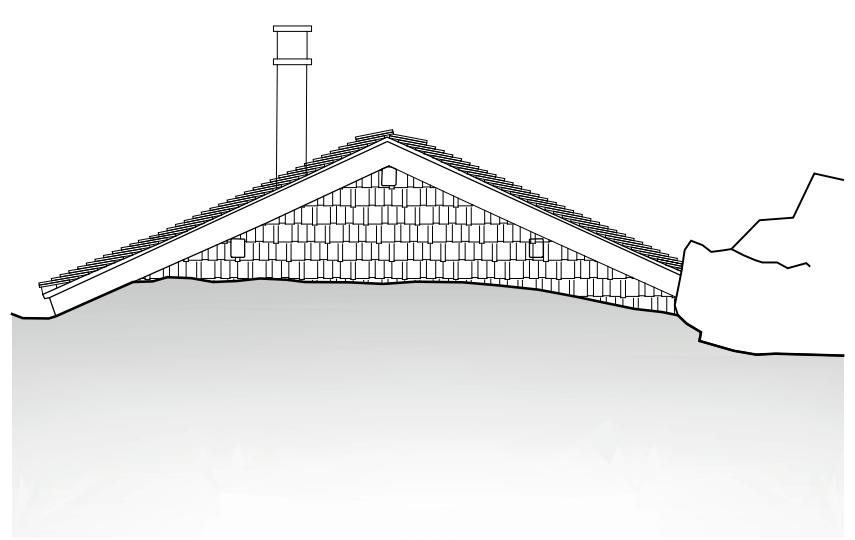


Sol :
plancher (panneau 3 plis) 1.9 cm
lattage 3 cm
Plaque fibre-gypse 2x 2.5 cm
isolation 15 cm
étanchéité
béton 25 cm

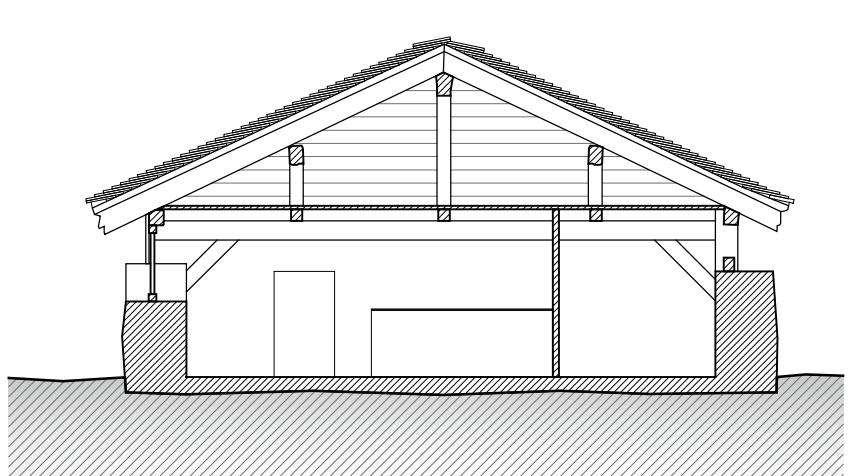
1:20 0 20 40 cm



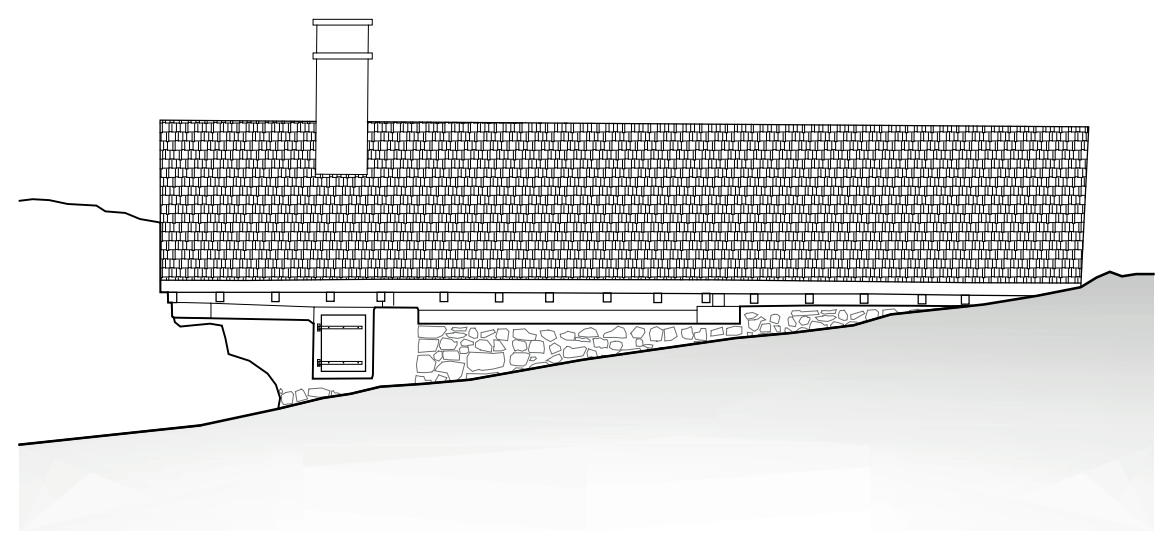
741



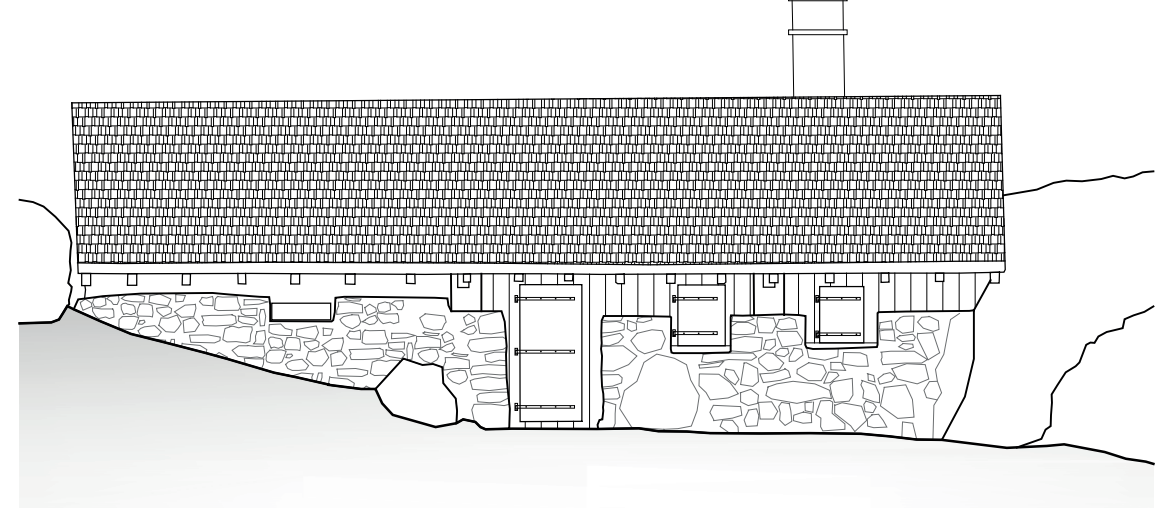
Façade nord



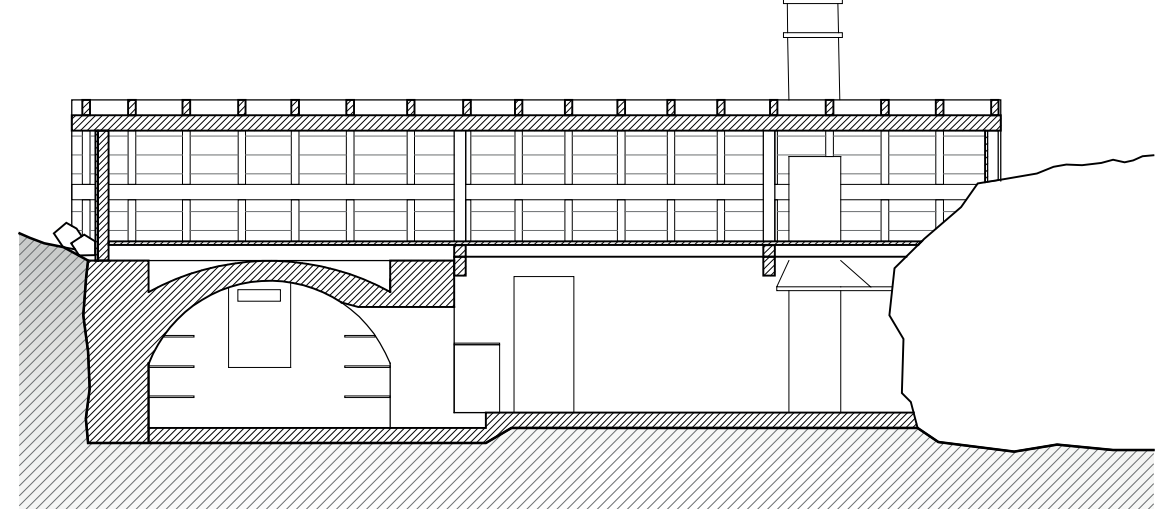
Coupe transversale



Façade est

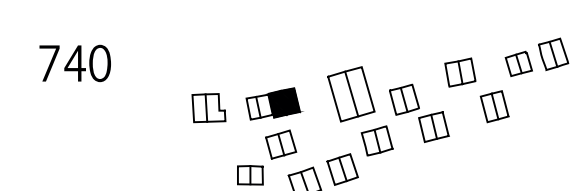


Façade ouest

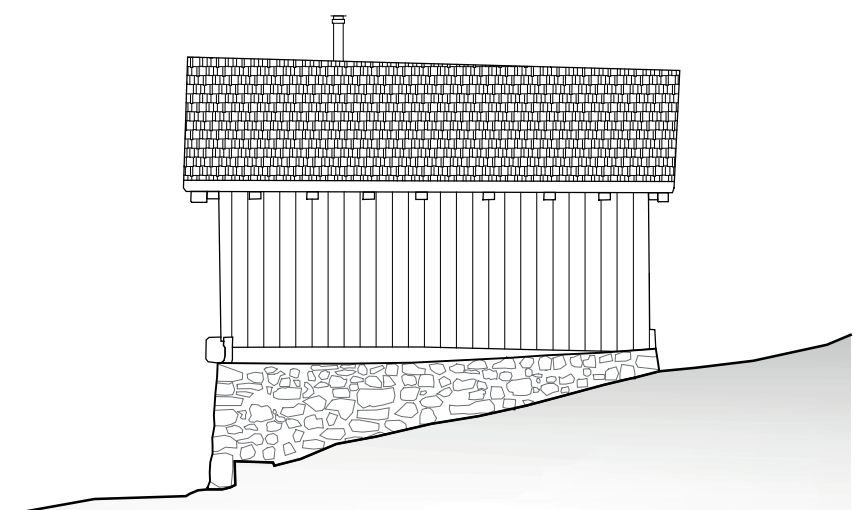


Coupe longitudinale

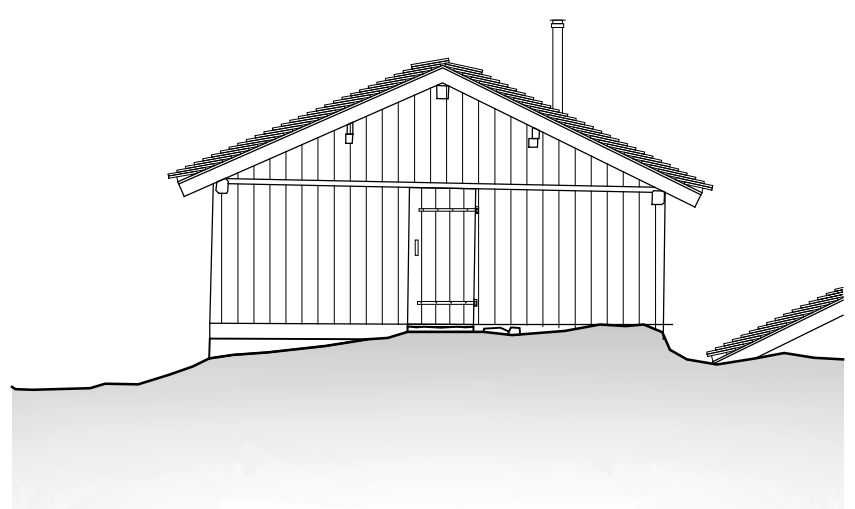
1:100 0 1 2 m



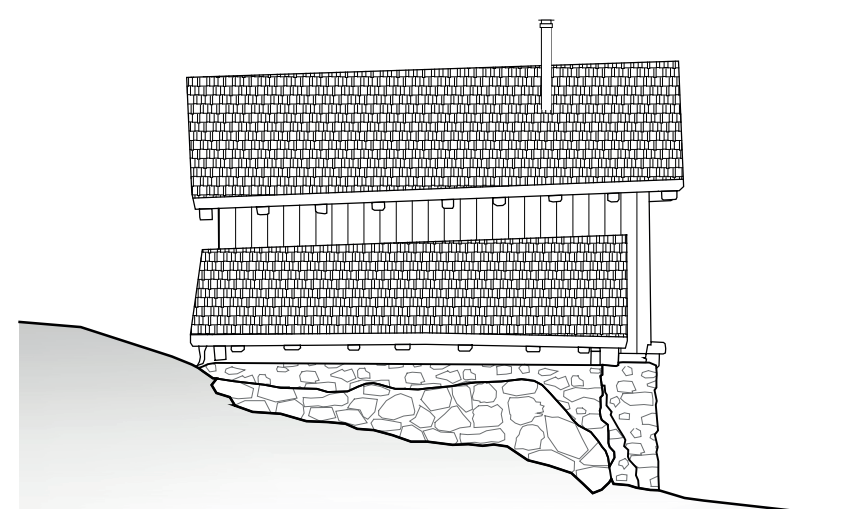
740



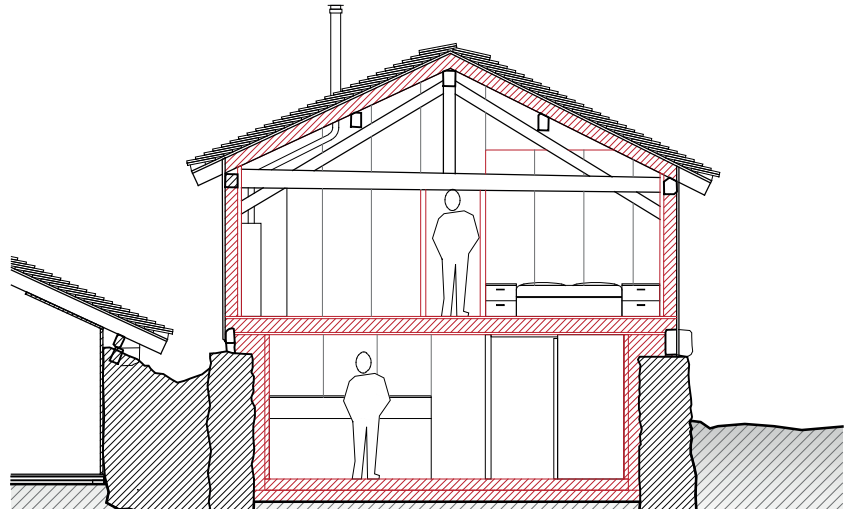
Façade est



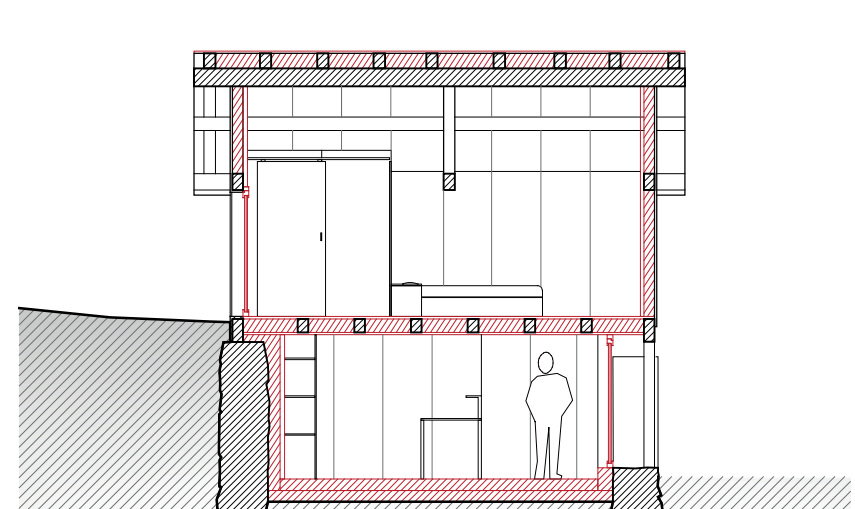
Façade nord



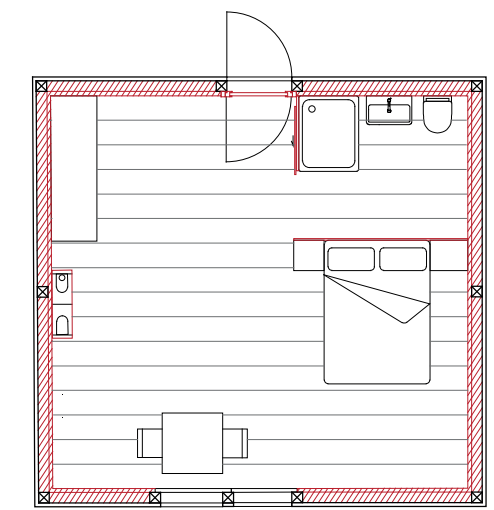
Façade ouest



Coupe transversale



Coupes longitudinales



Plan étage 28.6 m²

1:100 0 1 2 m