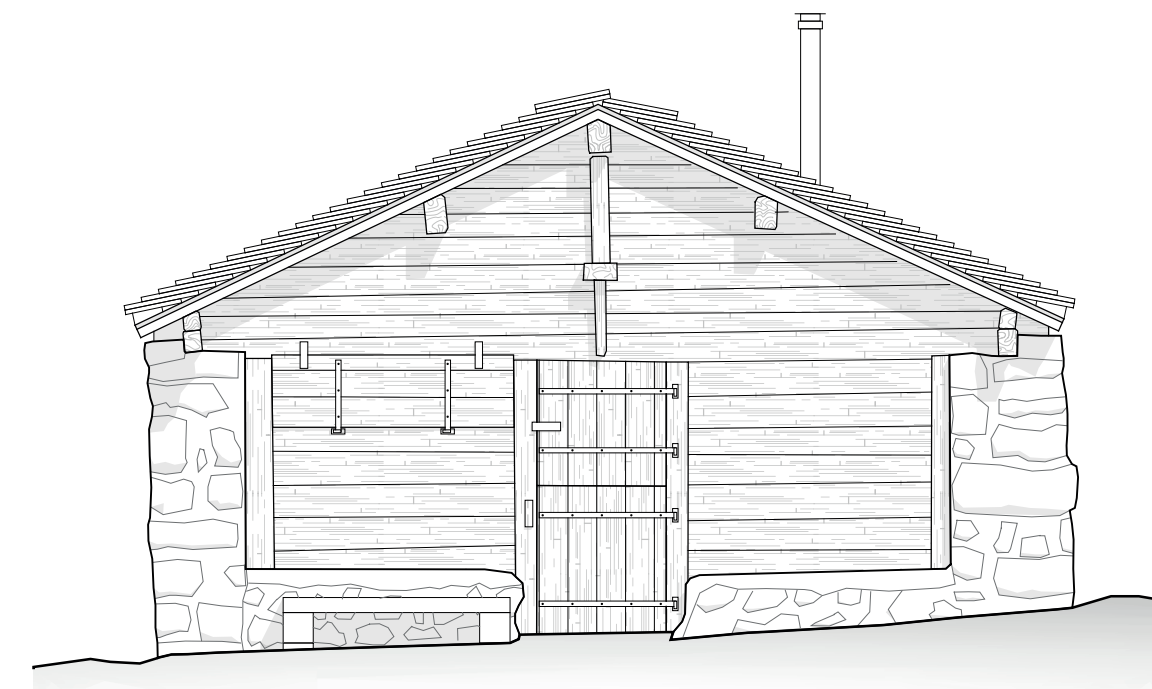
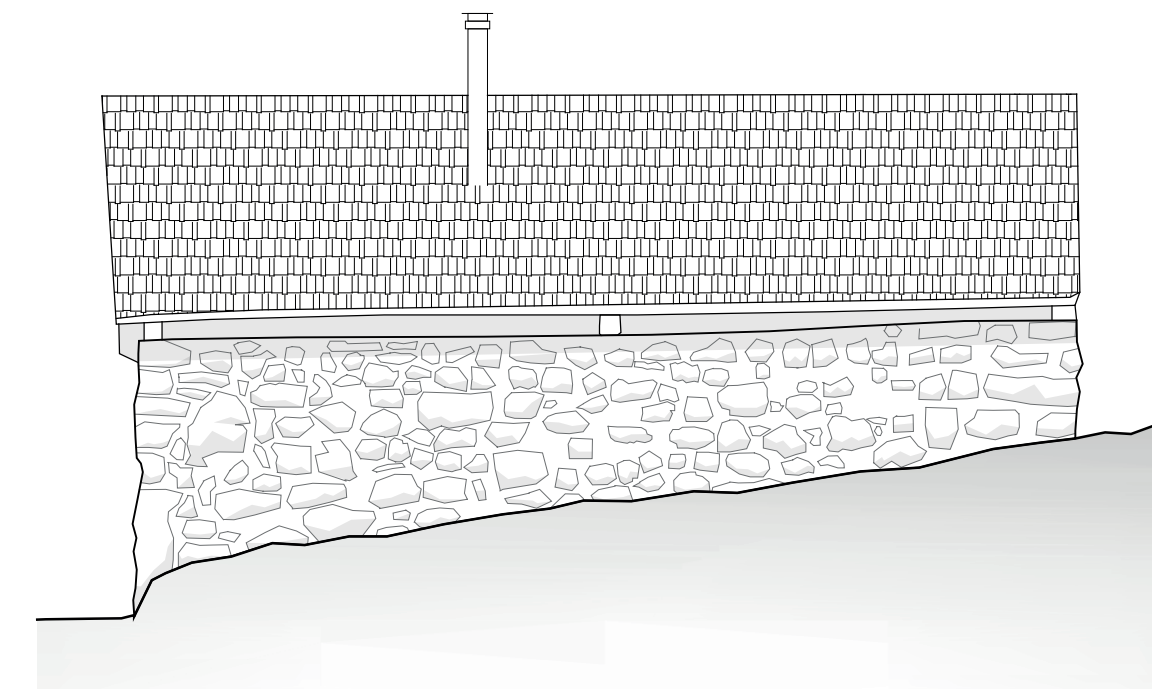


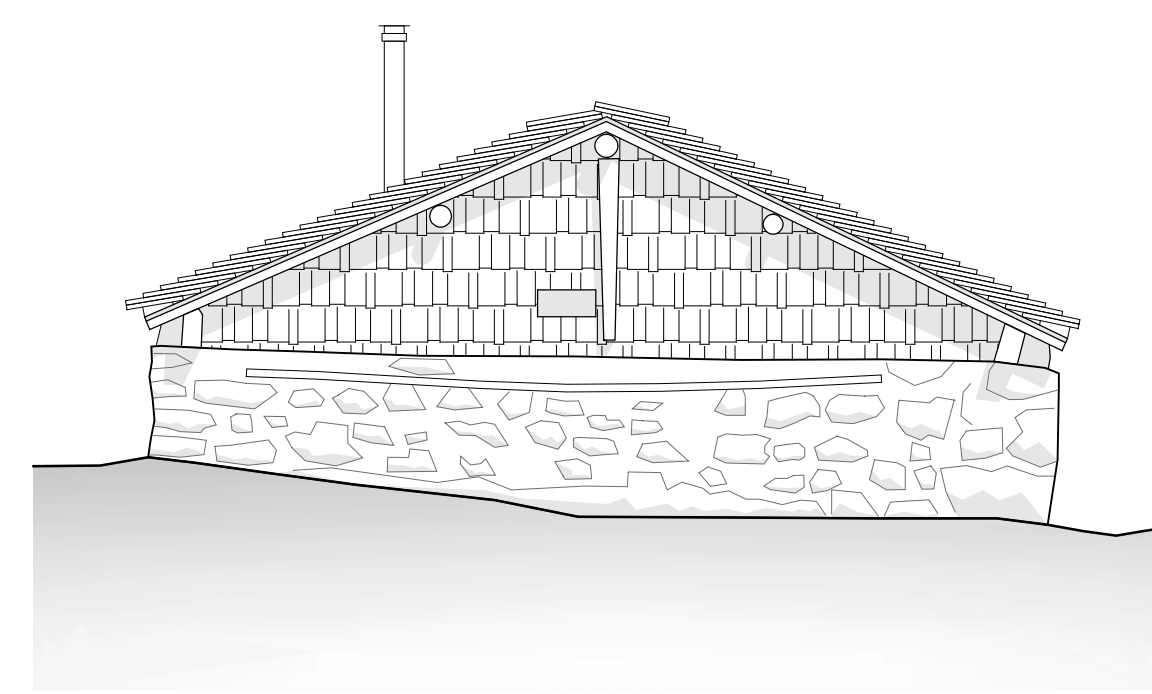
Façade sud volets ouverts



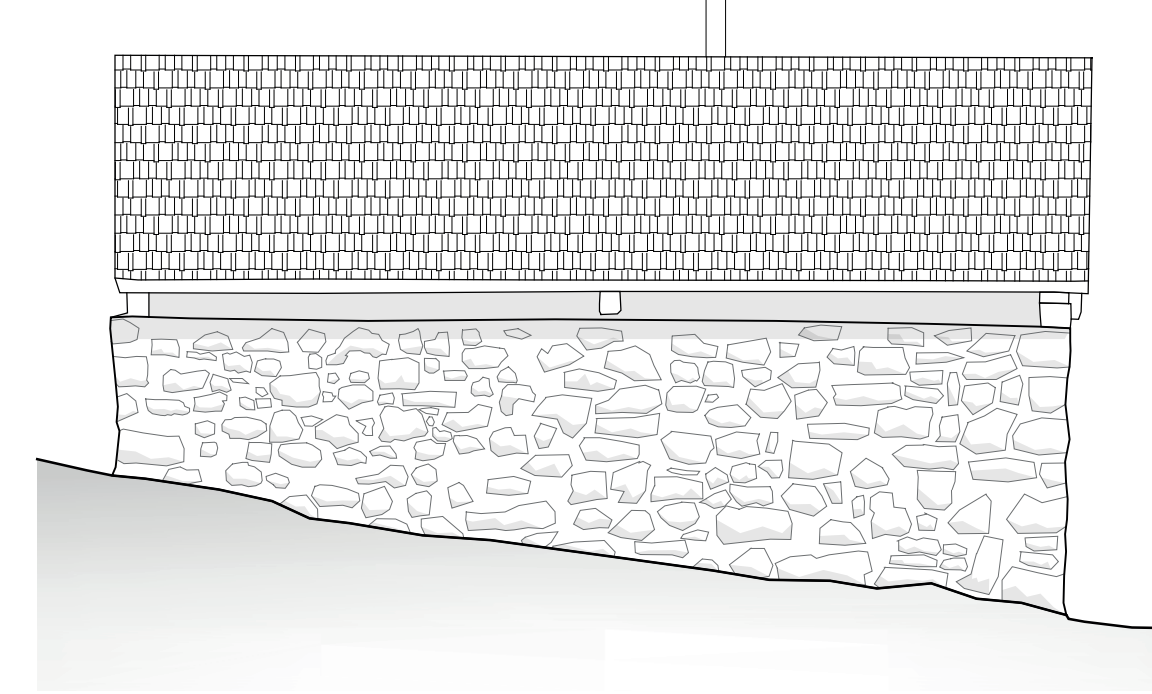
Façade sud volets fermés



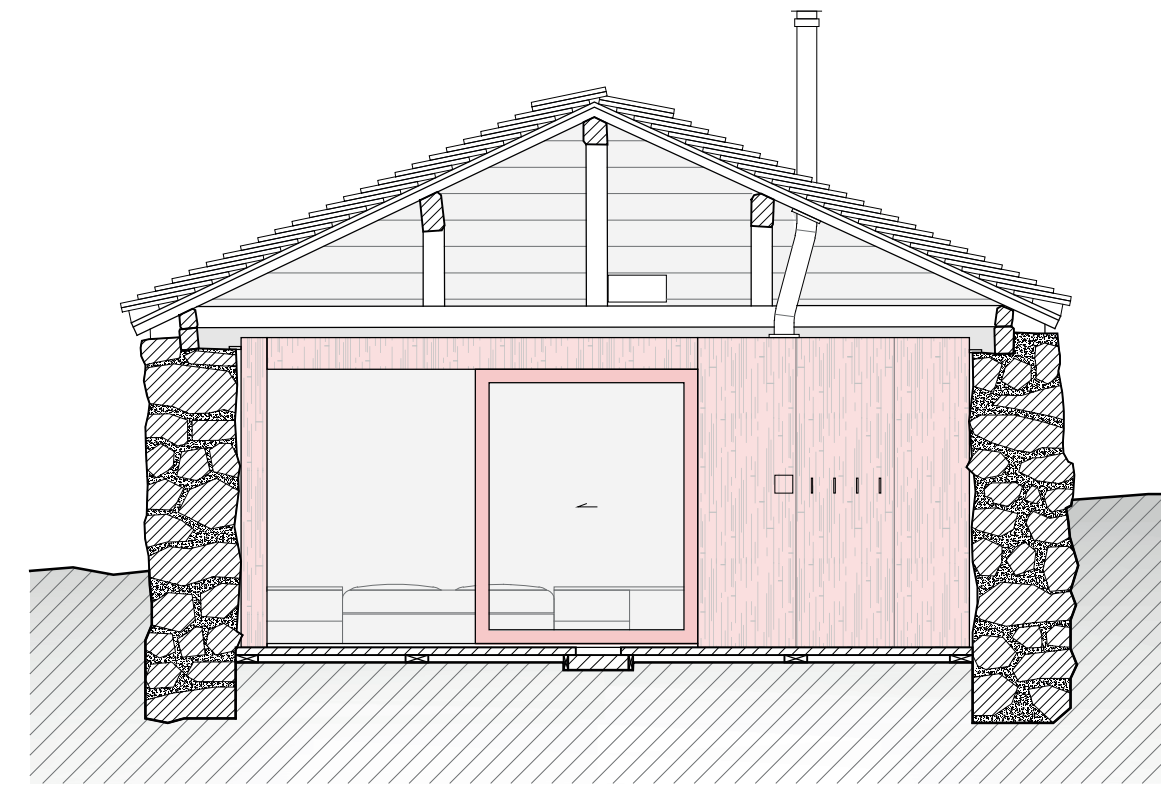
Façade est



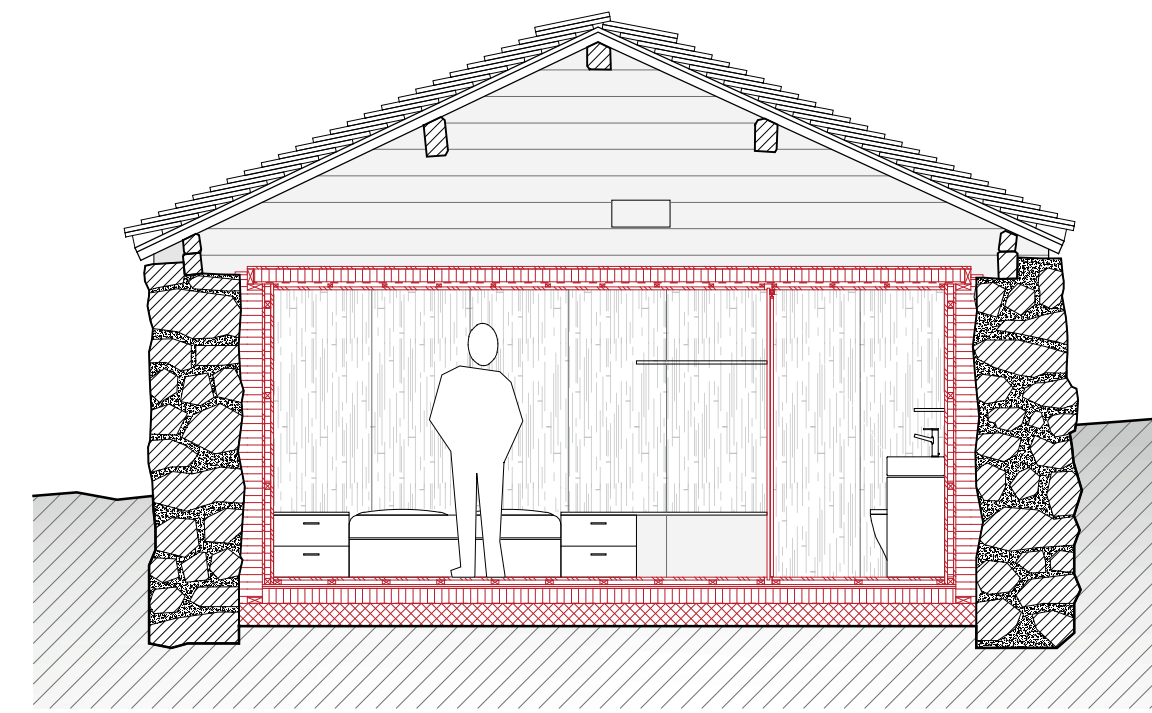
Façade nord



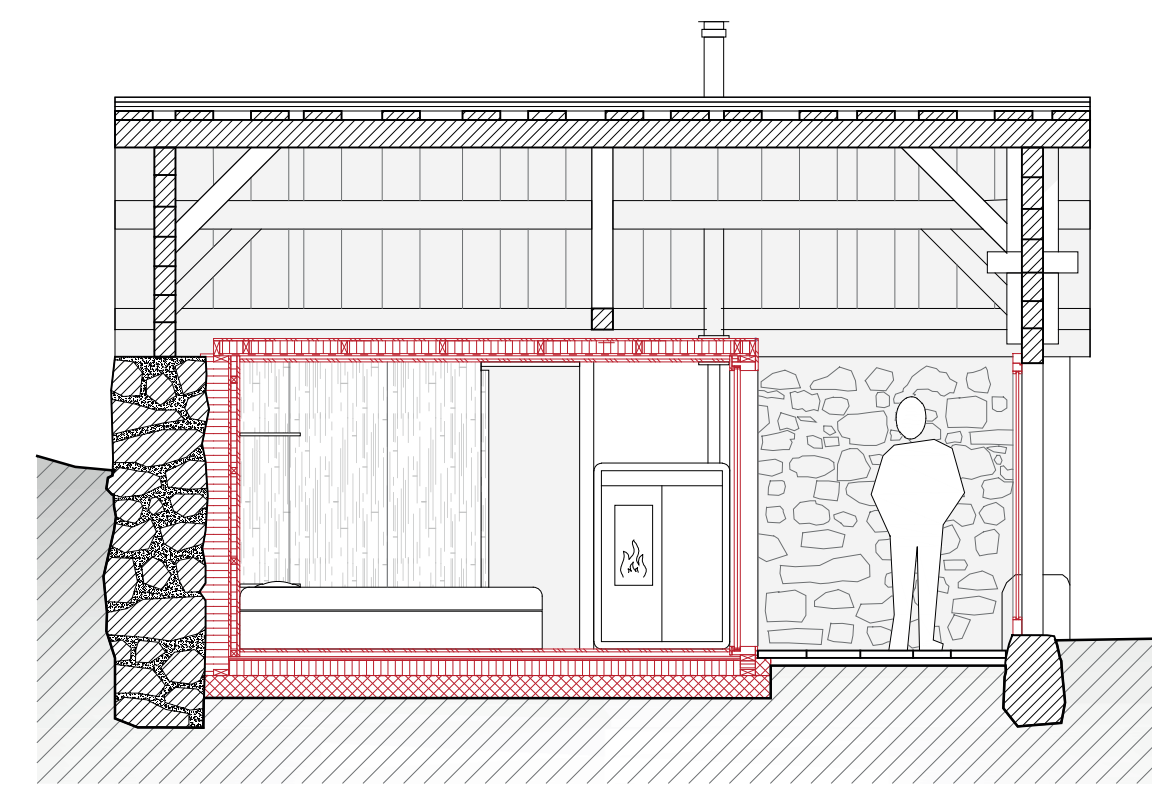
Façade ouest



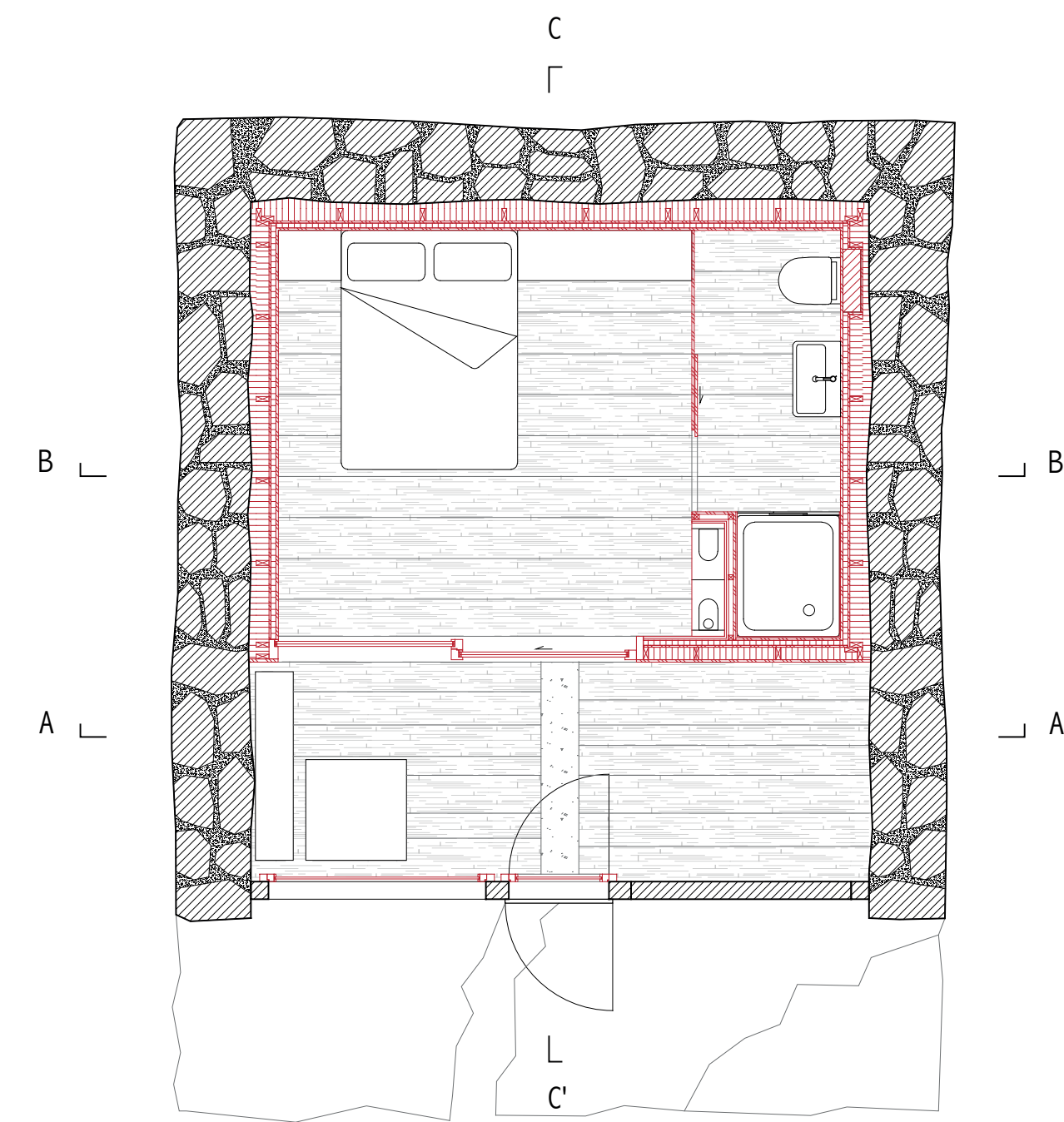
Coupe transversale A-A' 1:50 0 0.5 1m



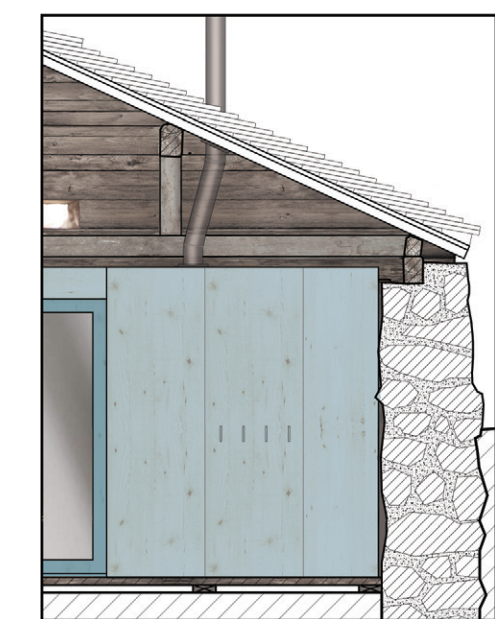
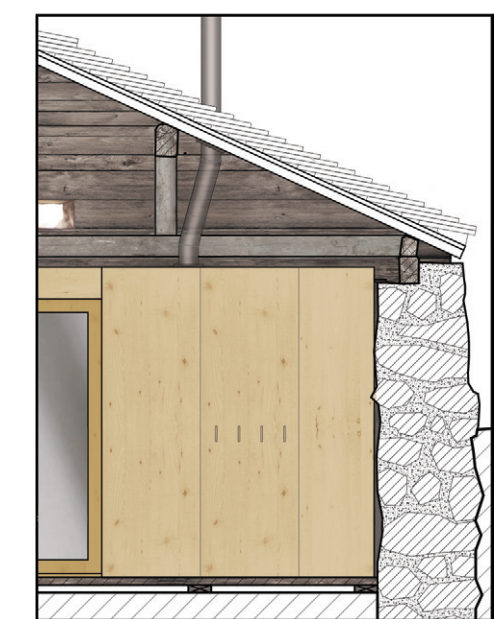
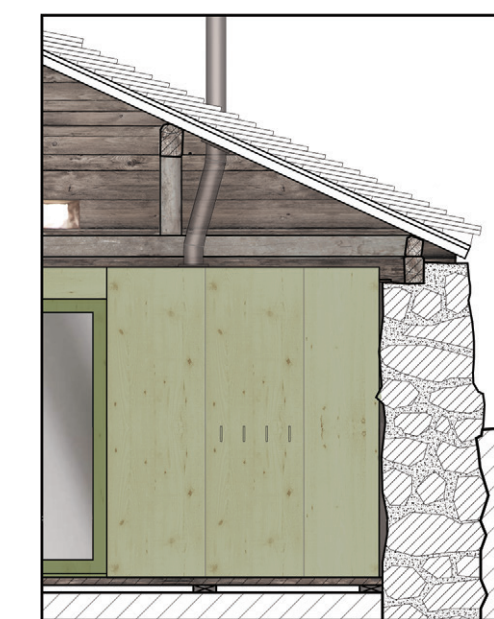
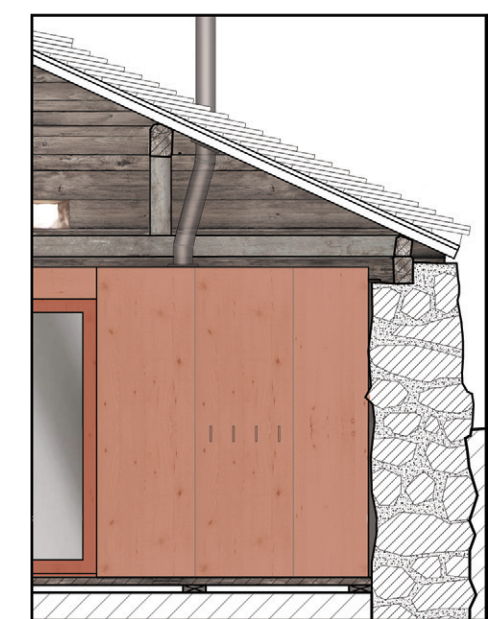
Coupe transversale B-B' 1:50 0 0.5 1m



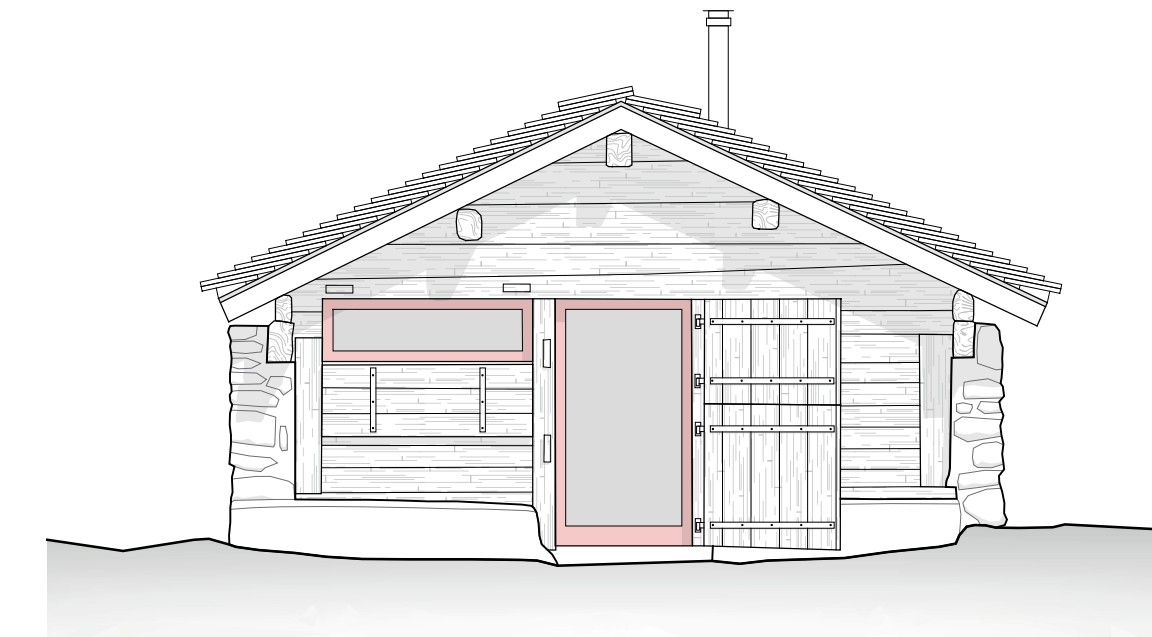
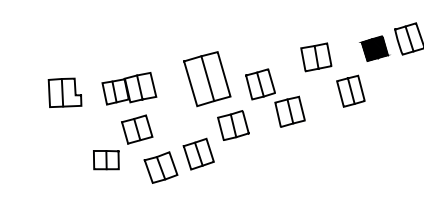
Coupe longitudinale C-C' 1:50 0 0.5 1m



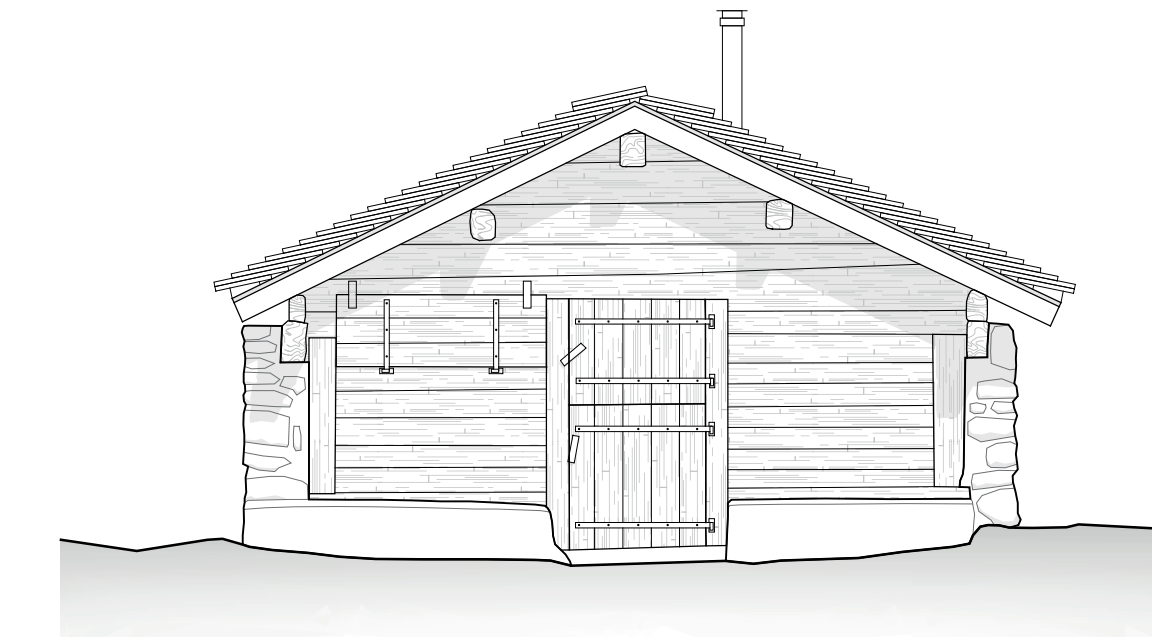
Plan : existant 27.3 m², alcôve 14.4m² 1:50 0 0.5 1m



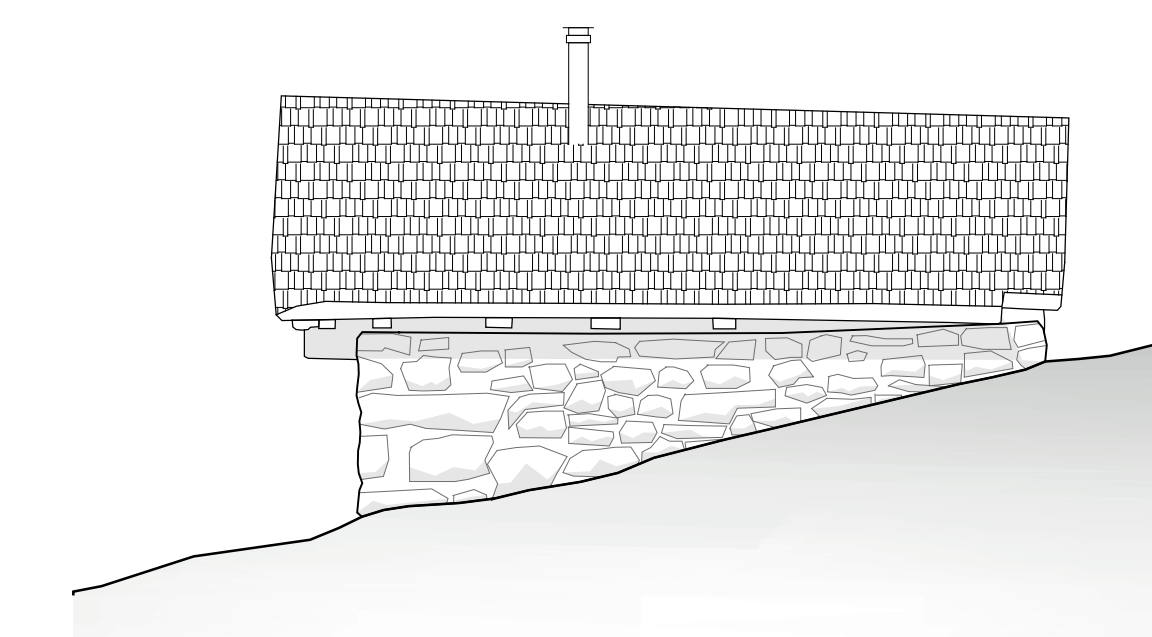
Propositions chromatiques



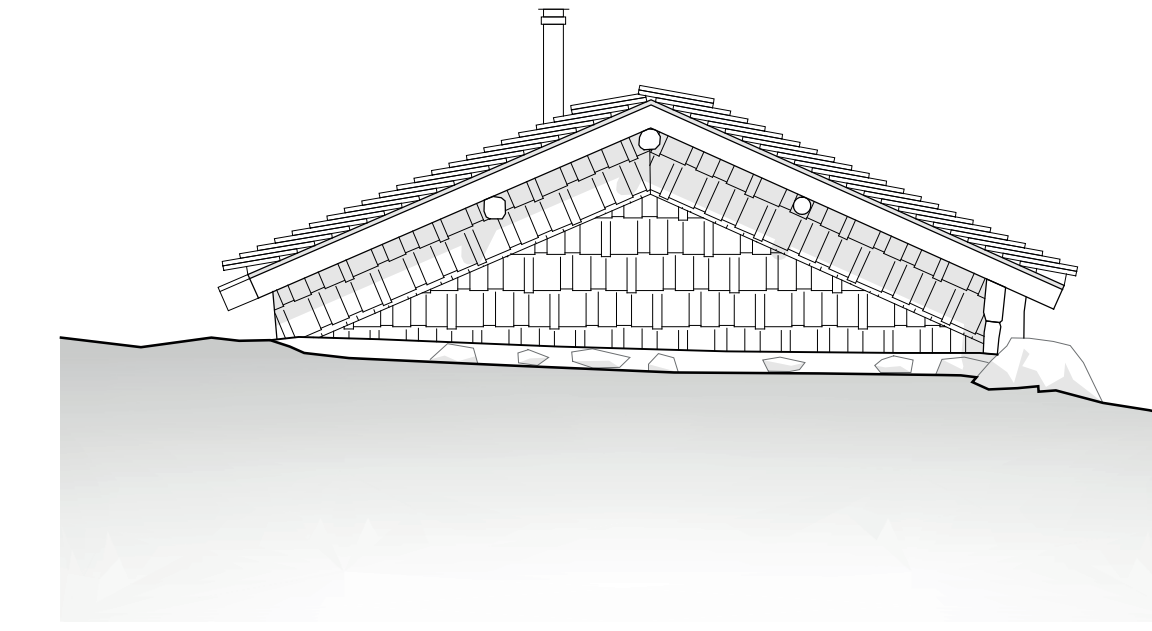
Façade sud volets ouverts



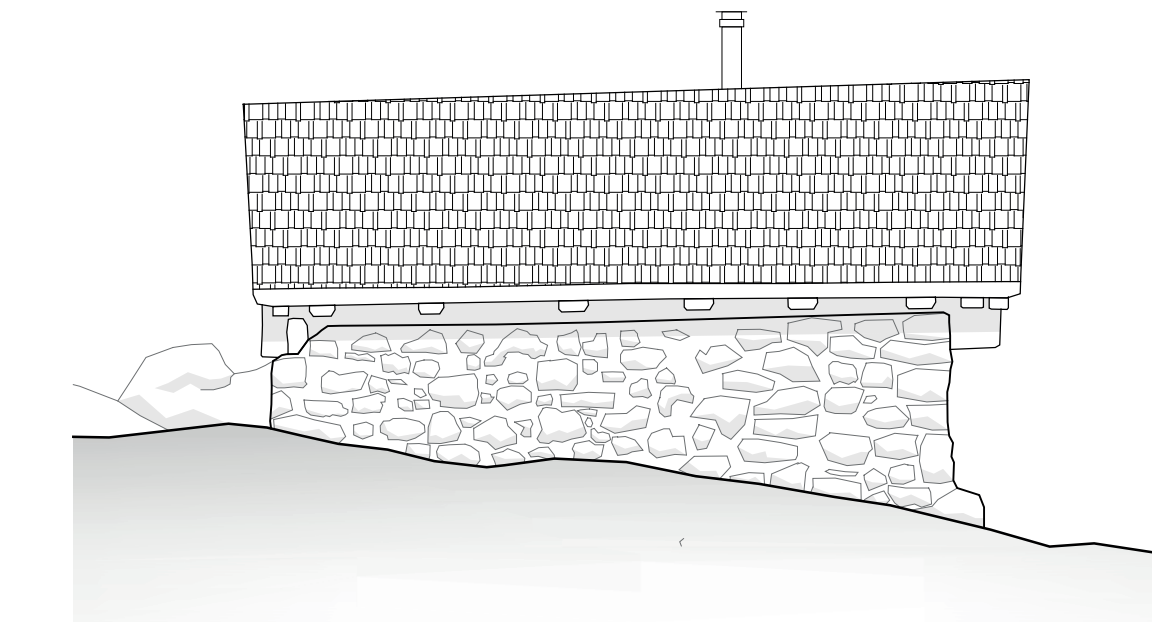
Façade sud volets fermés



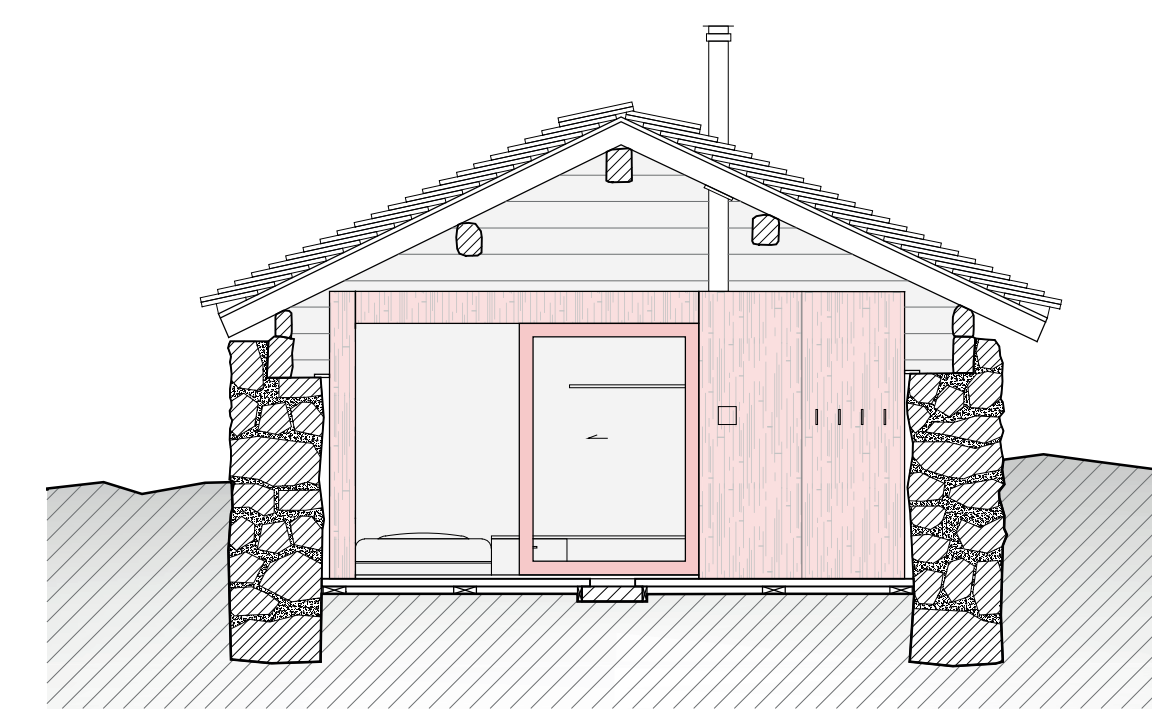
Façade est



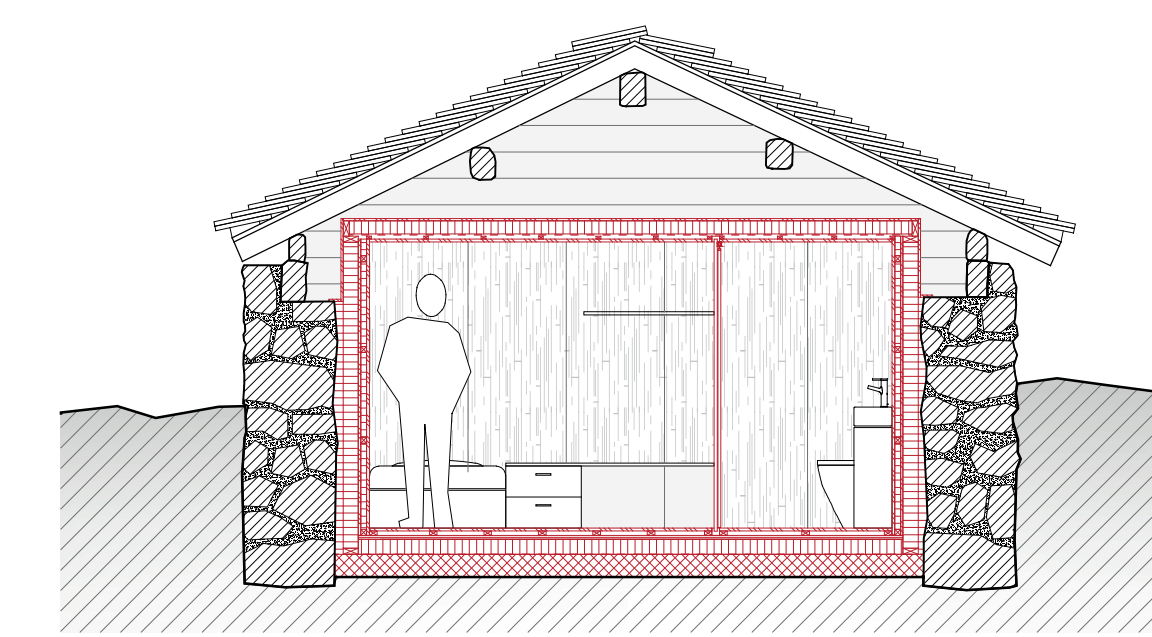
Façade nord



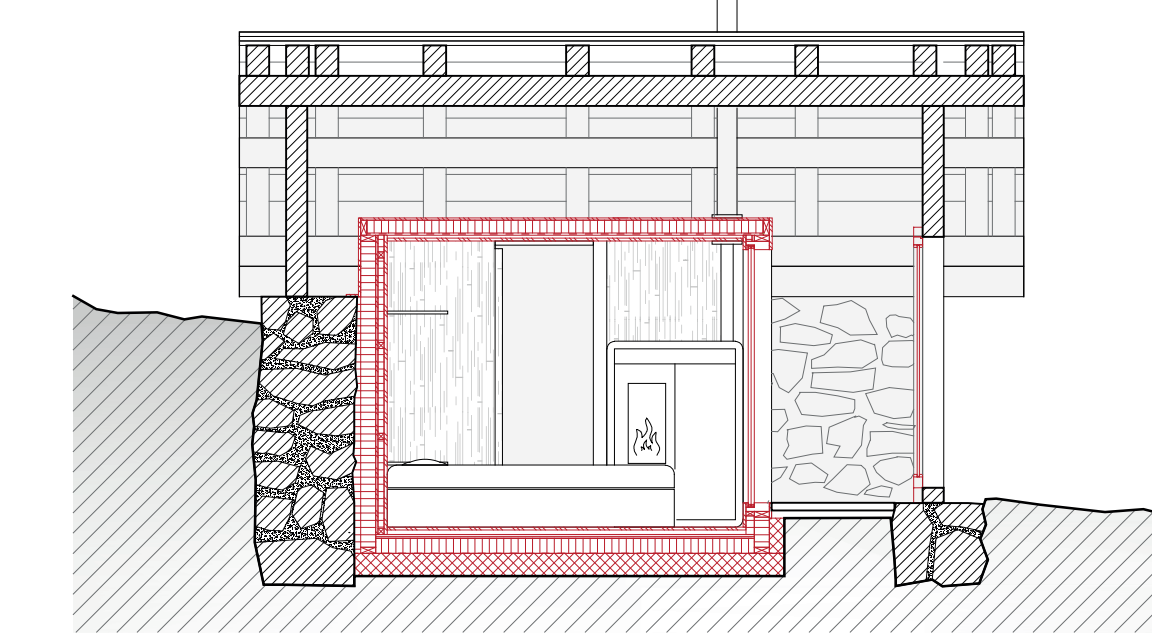
Façade ouest



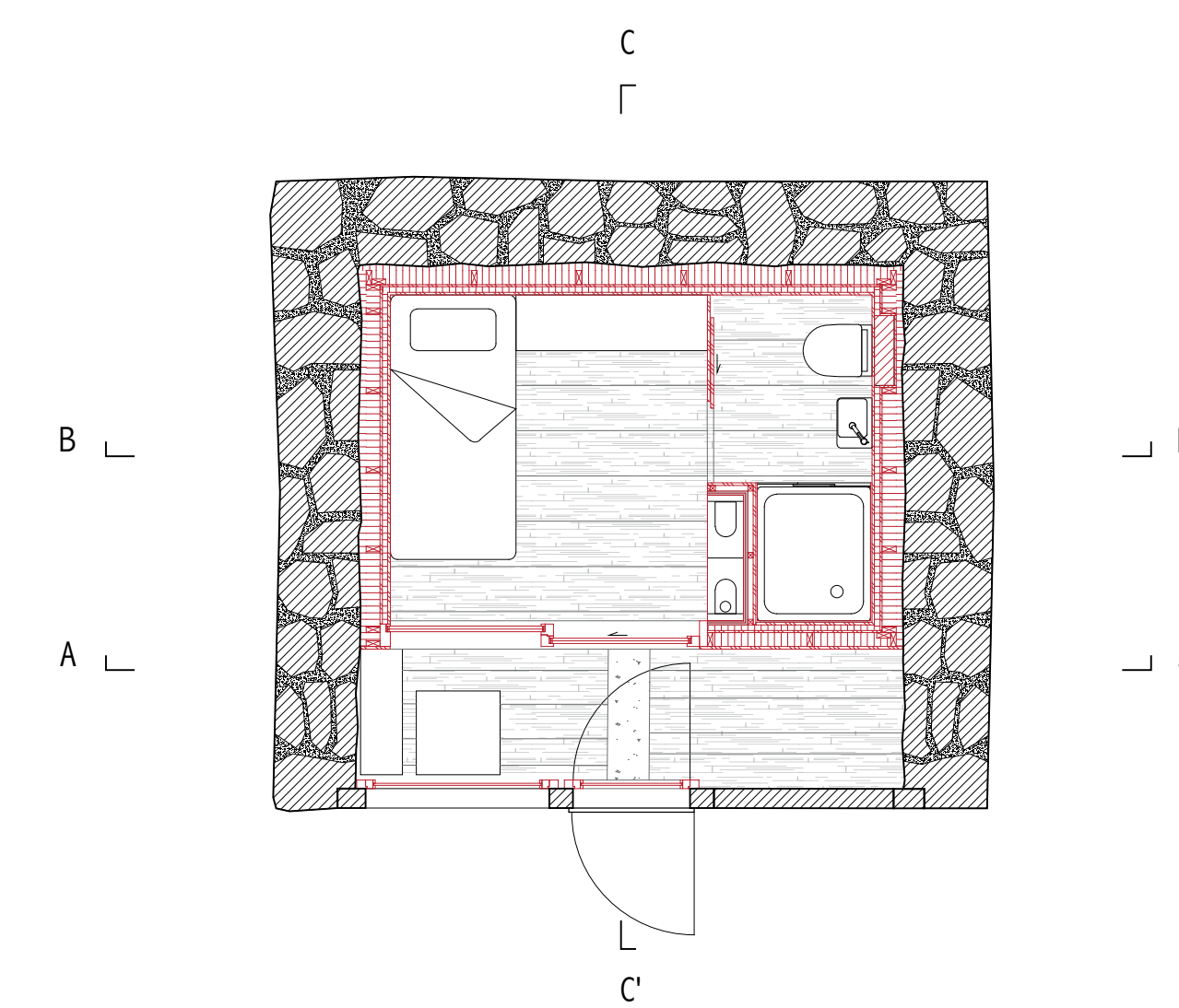
Coupe transversale A-A' 1:50 0 0.5 1m



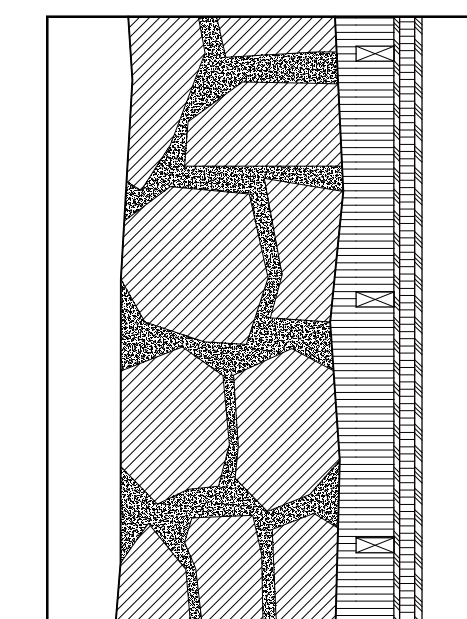
Coupe transversale B-B' 1:50 0 0.5 1m



Coupe longitudinale C-C' 1:50 0 0.5 1m



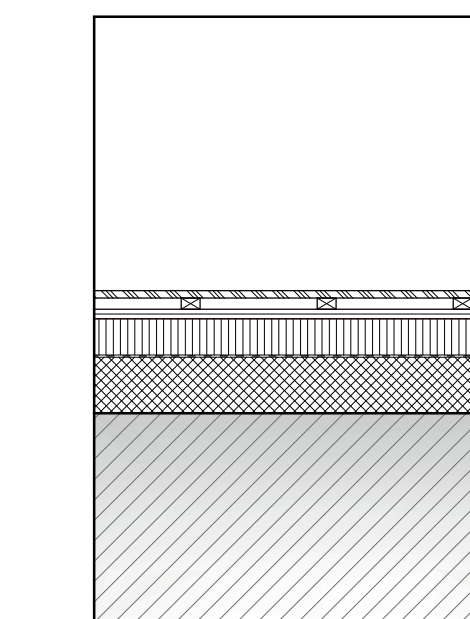
Plan : existant 14.7 m², alcôve 8.14 m² 1:50 0 0.5 1m



Détails constructifs 1:20

Mur :

mur en pierre existant	~ 60 cm
ouate de cellulose	min 3 cm
ouate de cellulose/ossature	10 cm
panneau OSB (pare-vapeur)	1.2 mm
isolation / lattage horizontal	4 cm
panneau 3 plis sapin	1.9 cm



Sol :

plancher (panneau 3 plis)	1.9 cm
lattage	3 cm
Plaque fibre-gypse 2x	2.5 cm
isolation	10 cm
étanchéité	
béton	15 cm

1:20 0 20 40cm