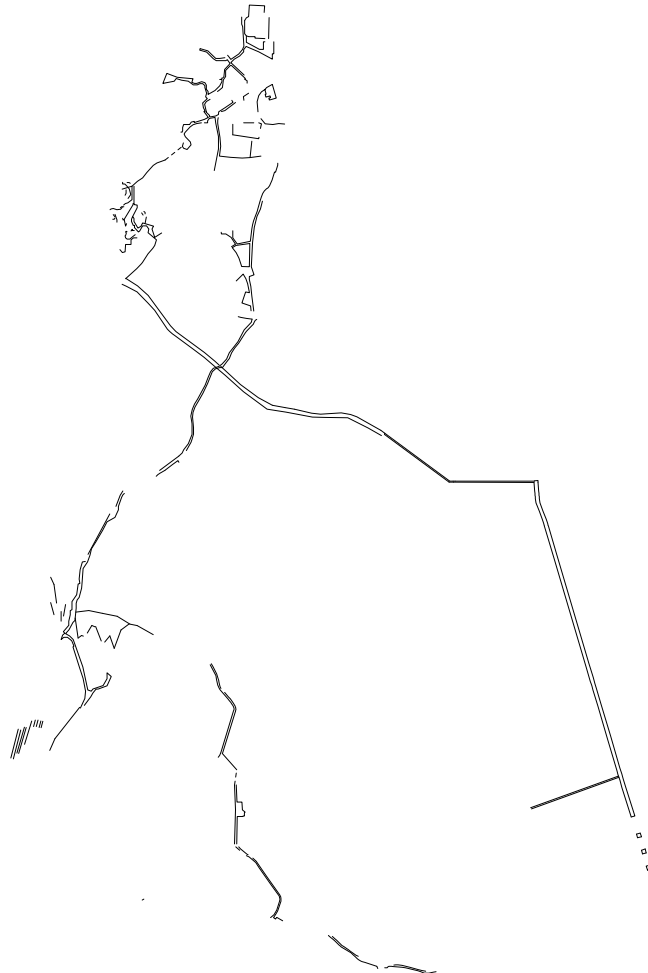


Simone Quadri

Retour à l'abandon

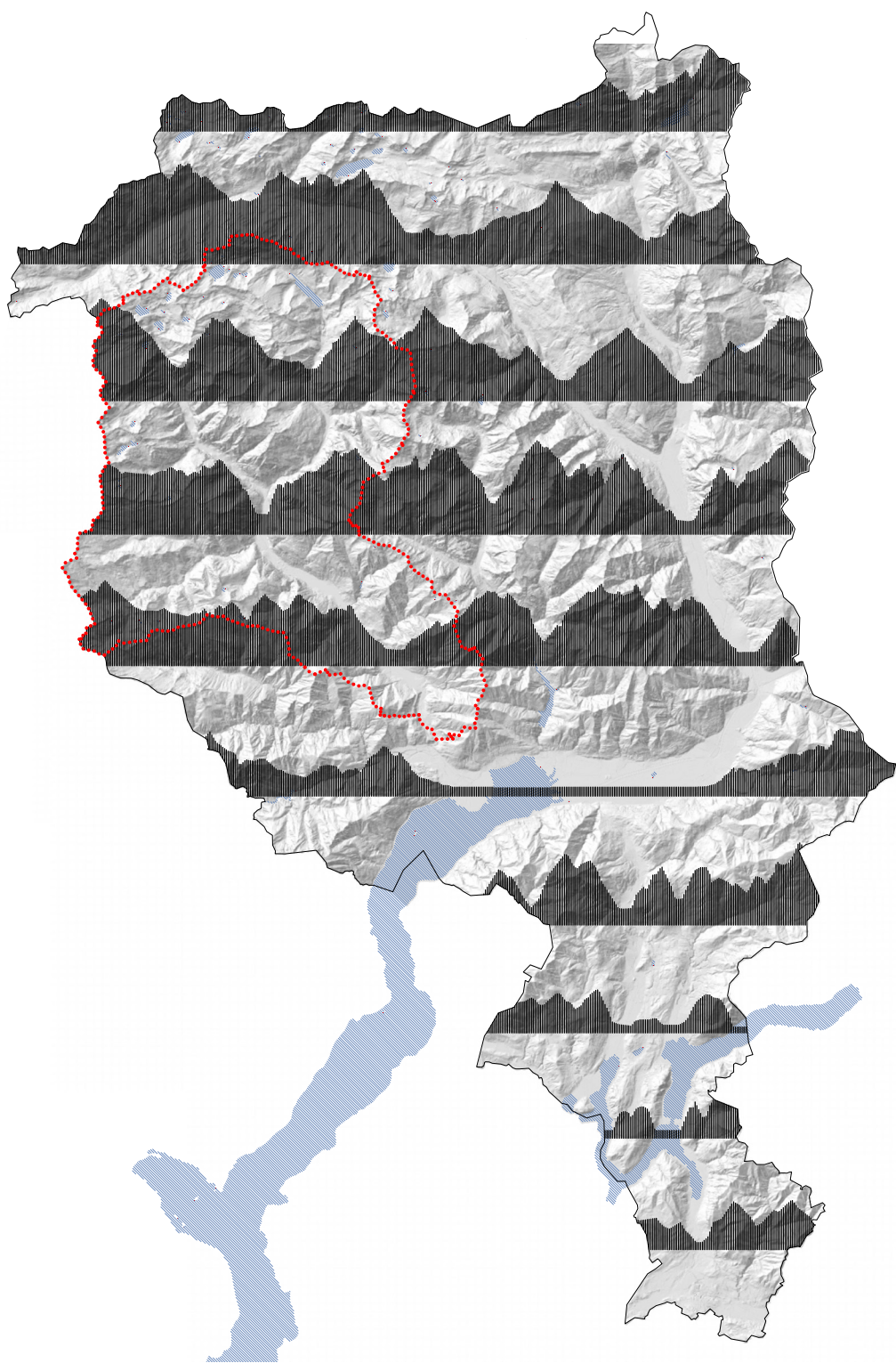
Une maison de la pierre à Cevio,
Canton du Tessin



Vallemaggia
le territoire



image satellite du Tessin



coupes territoriales 15 km



*rivière Maggia entre Cevio
et Visletto*



la rivière Maggia



terrassements en pierre



Val Bavona



plantation de châtaigner

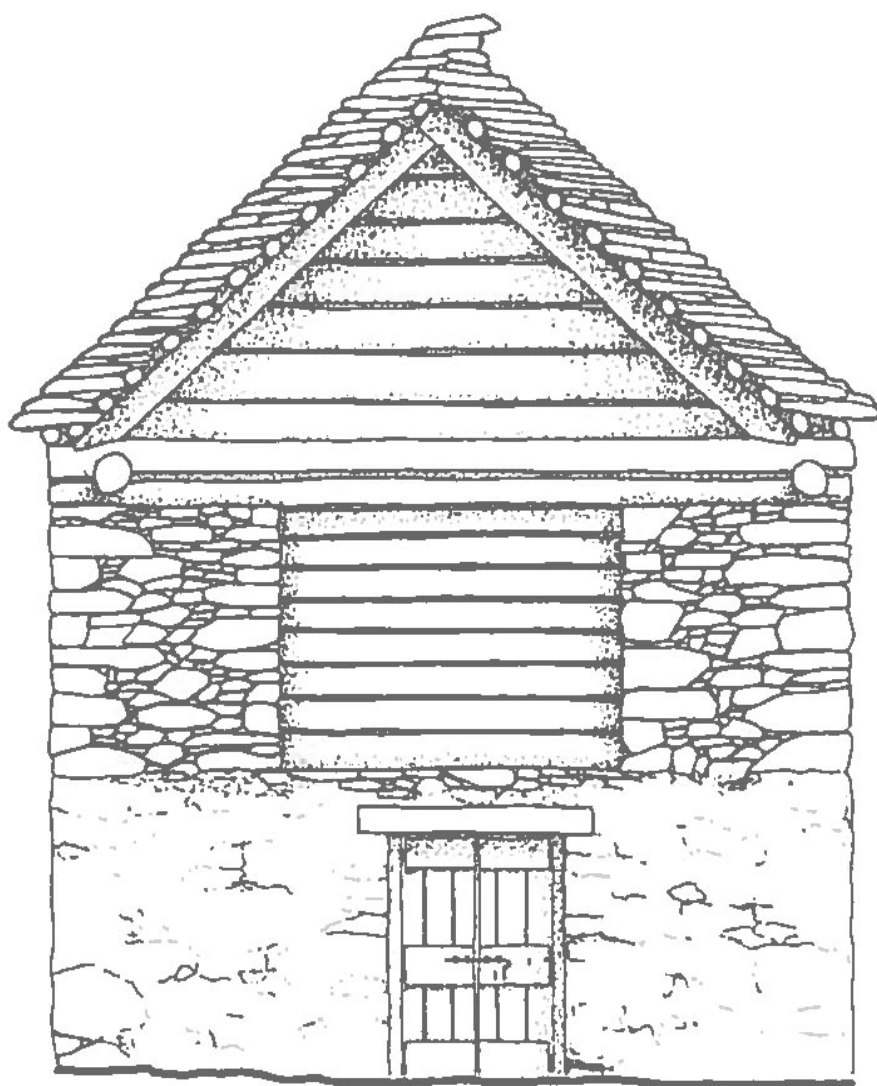


*Boschetto, conformation typique d'un village de
la vallée*

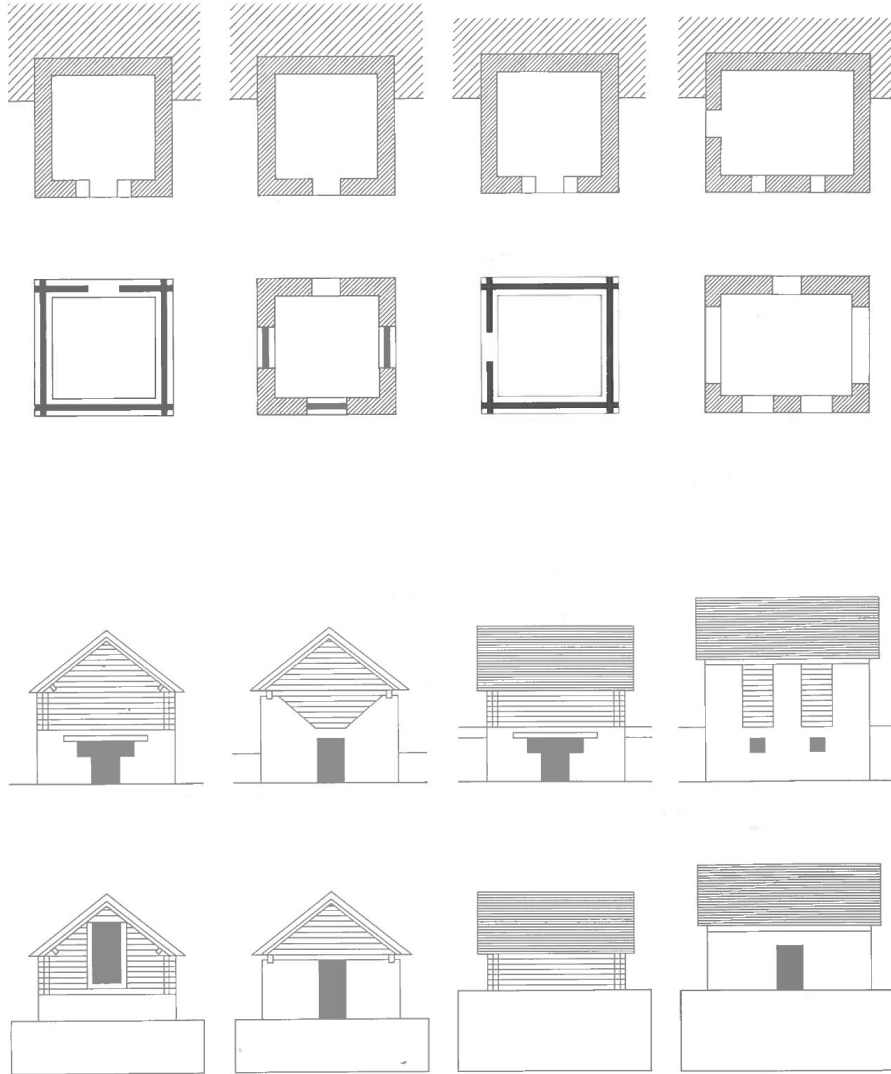


*Brontallo, village type divisé entre partie maisons
et parties granges-étables*

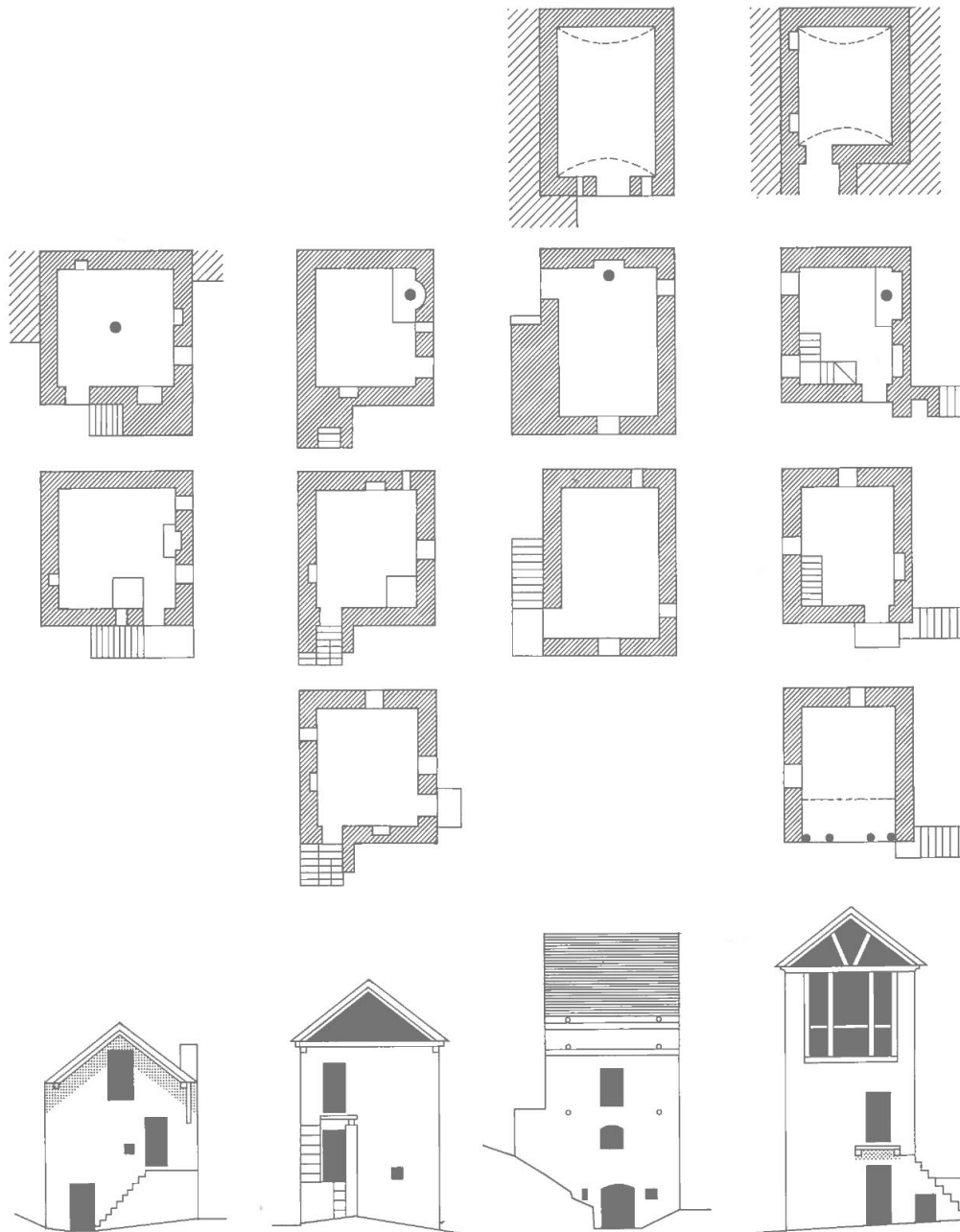
Vallemaggia
constructions vernaculaires



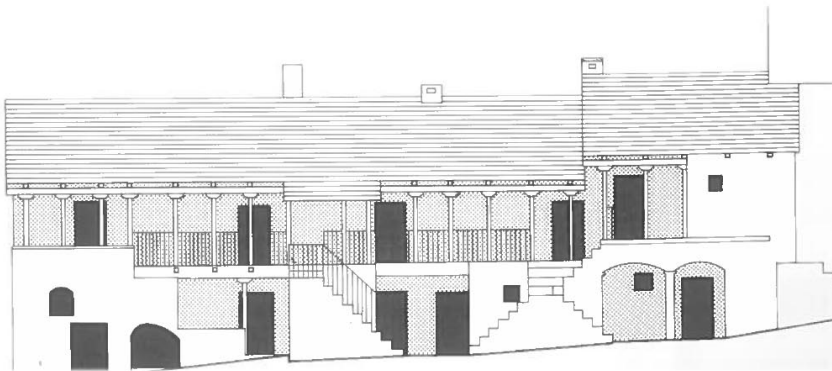
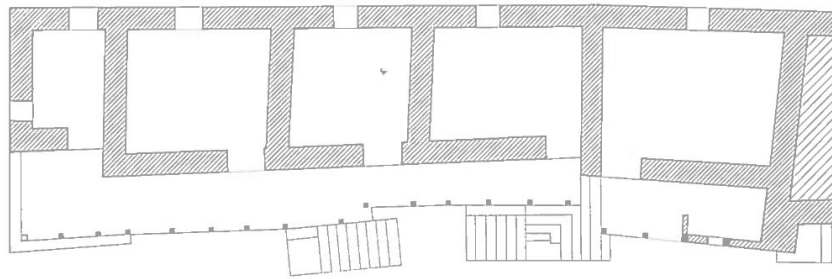
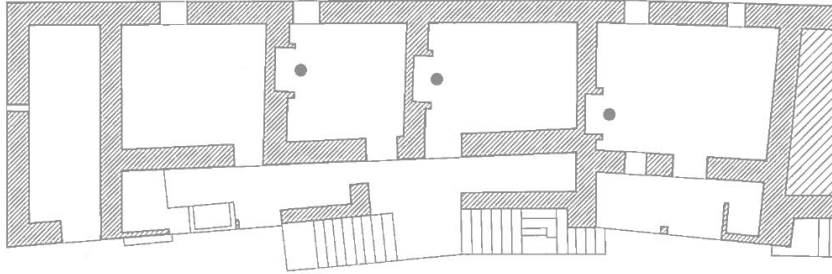
*grange-étable typique de la
Valmaggia*



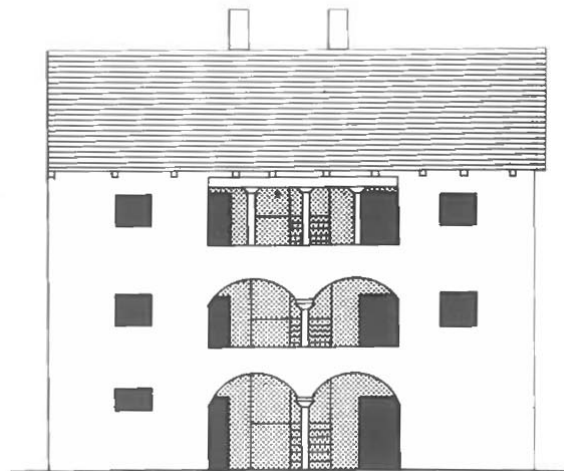
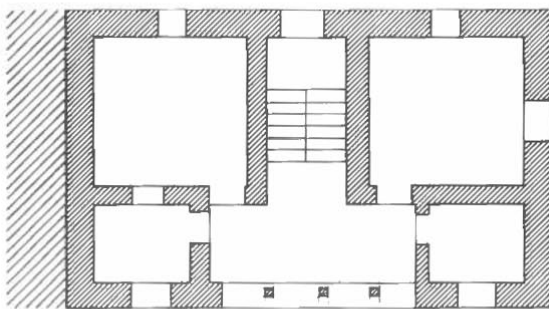
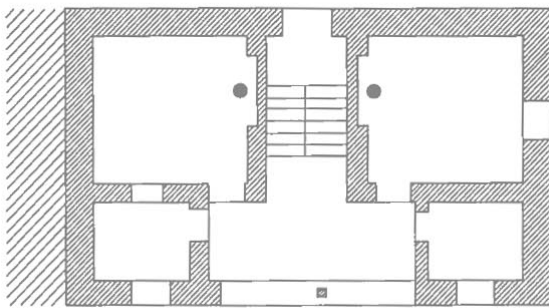
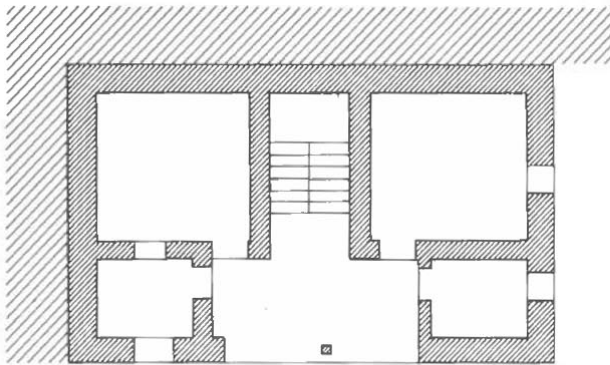
déclinaisons du type



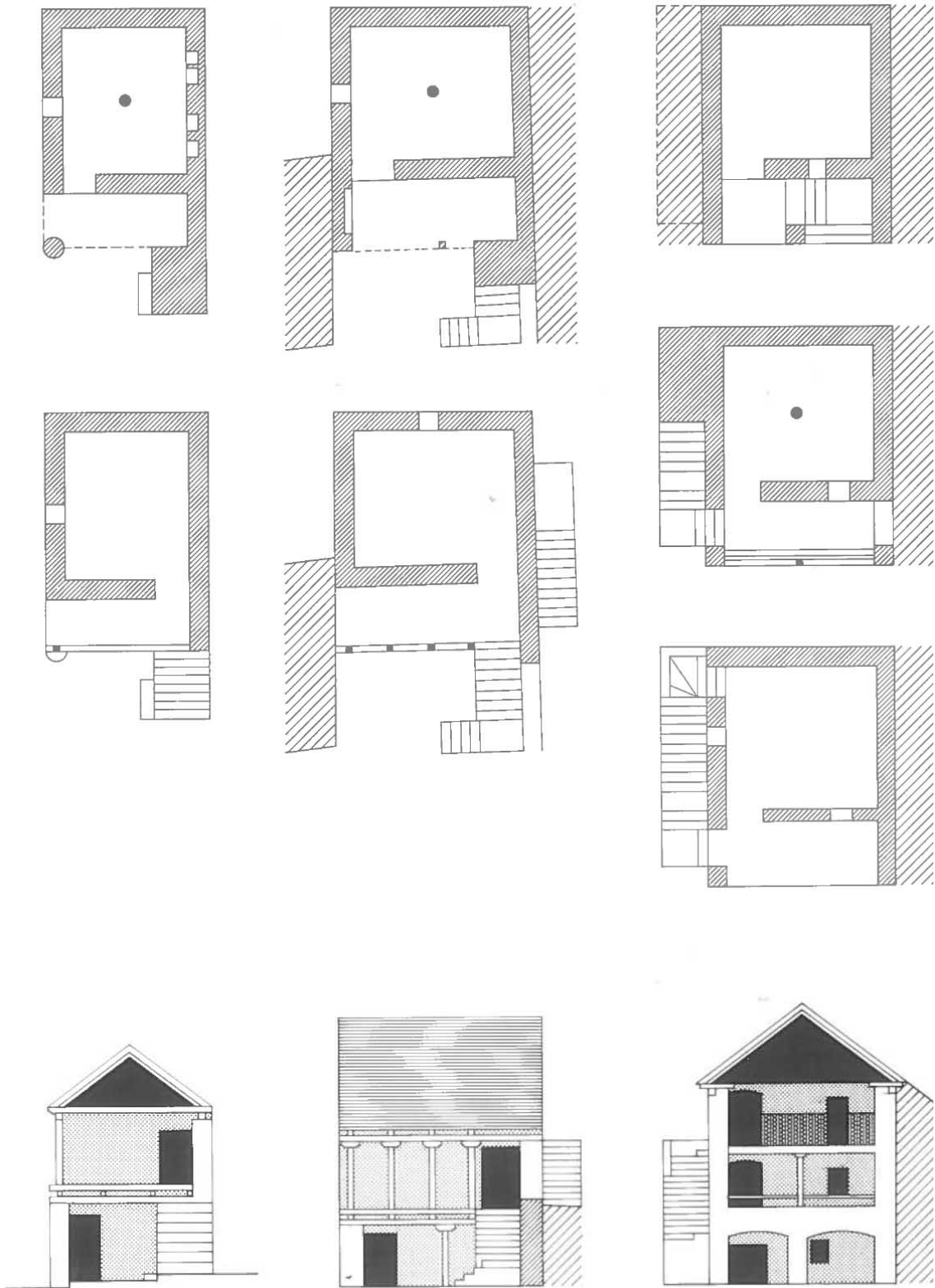
maison à tour en pierre



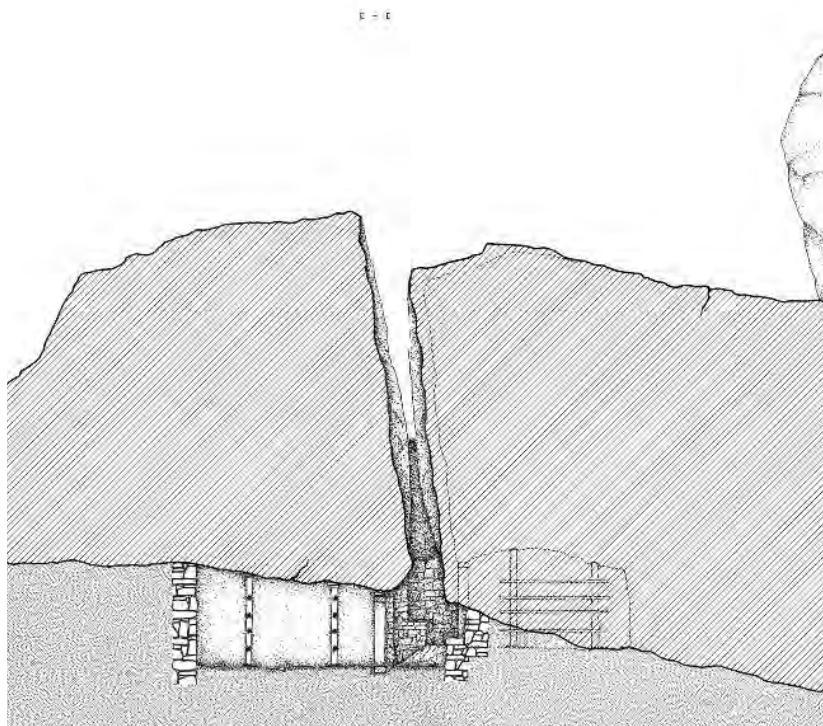
*maisons à coursive en
pierre*



habitation hybride traditionnelle-savante en pierre



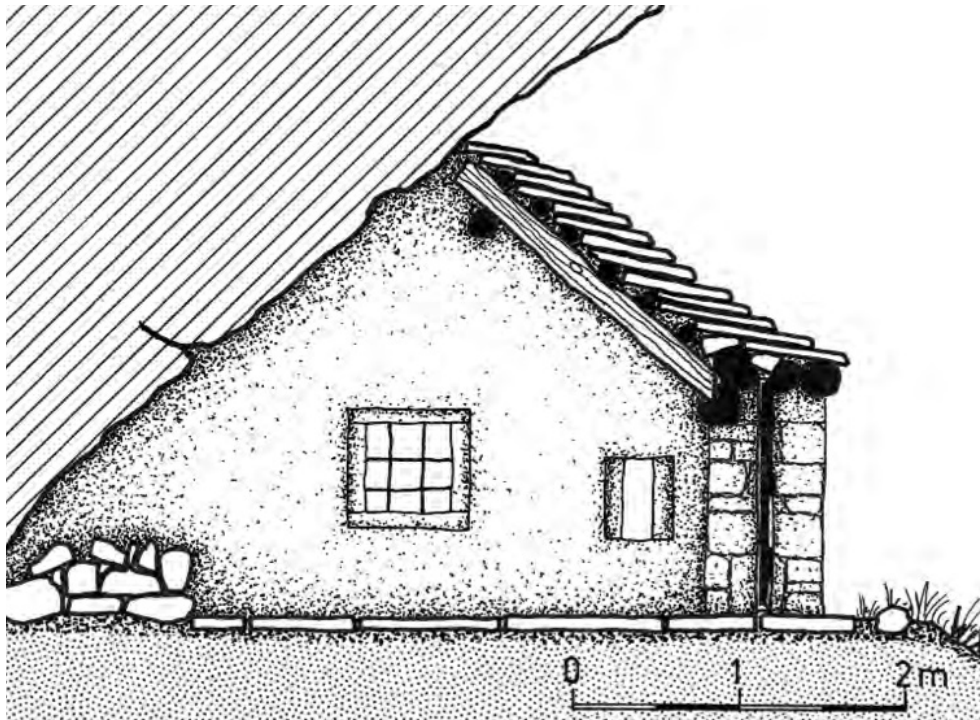
maison en profondeur



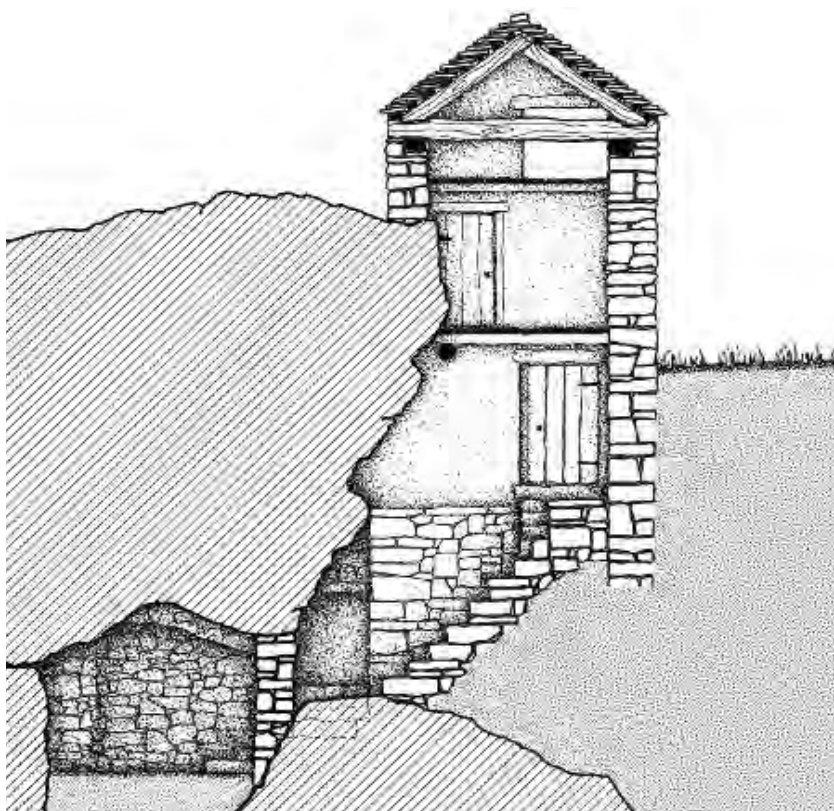
exemple de spili



exemple de spüli



exemple de «gronda»



exemple de «grotto»

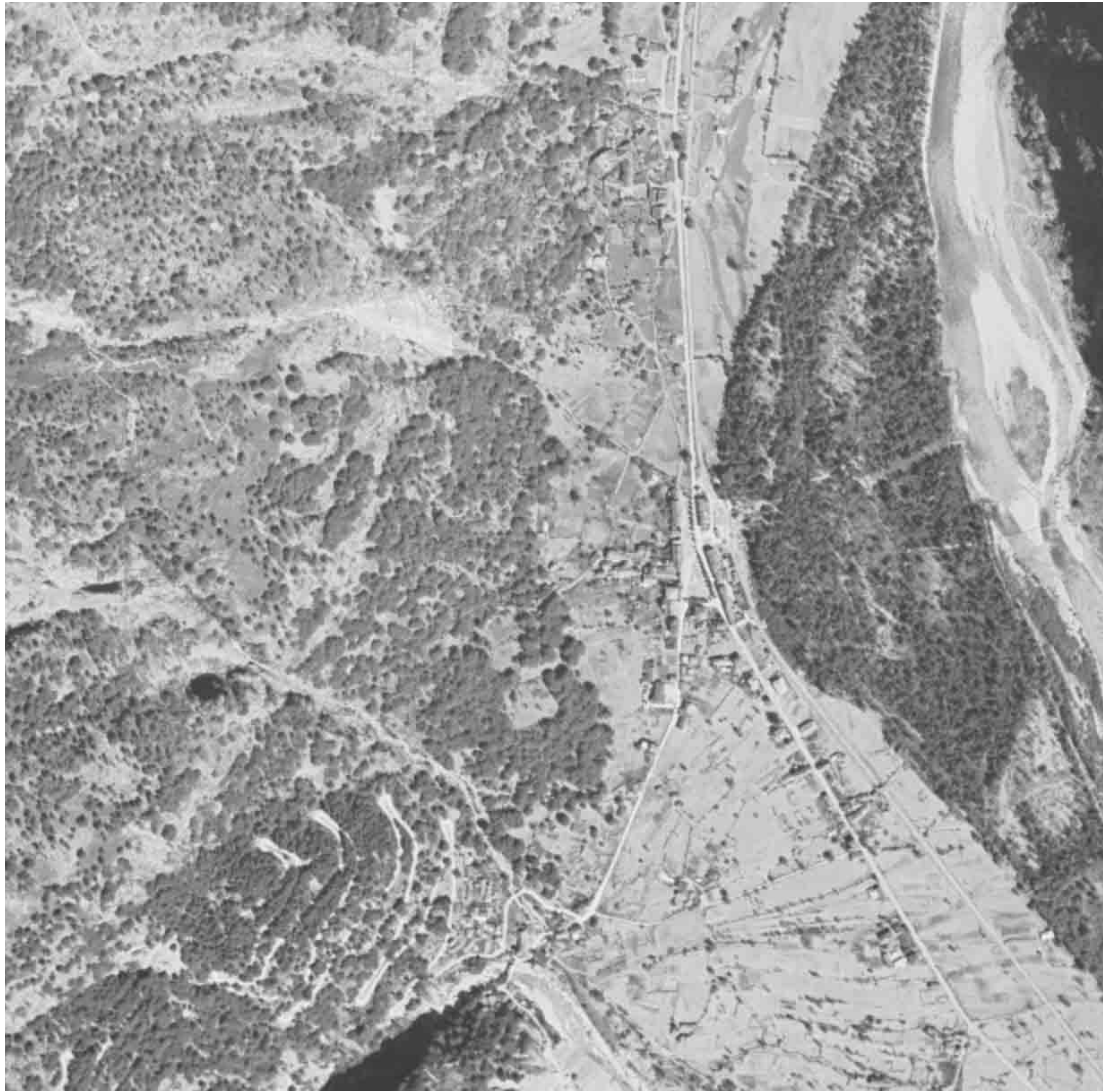
Cevio
évolution historique



Cevio Piazza 1933



Cevio Piazza 1983



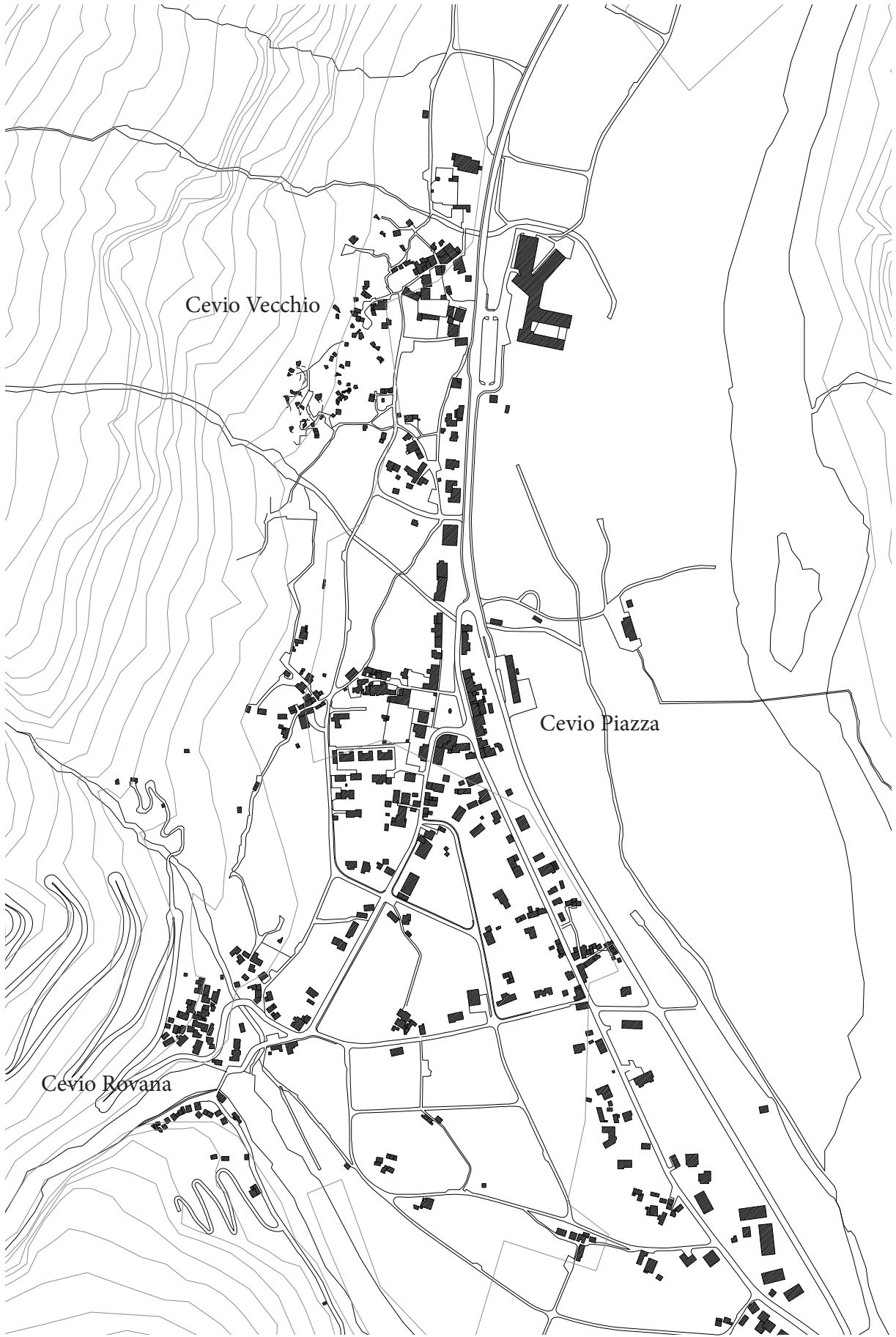
forêts autour de Cevio en 1945



forêts autour de Cevio en 1983



source: swisstopo.ch

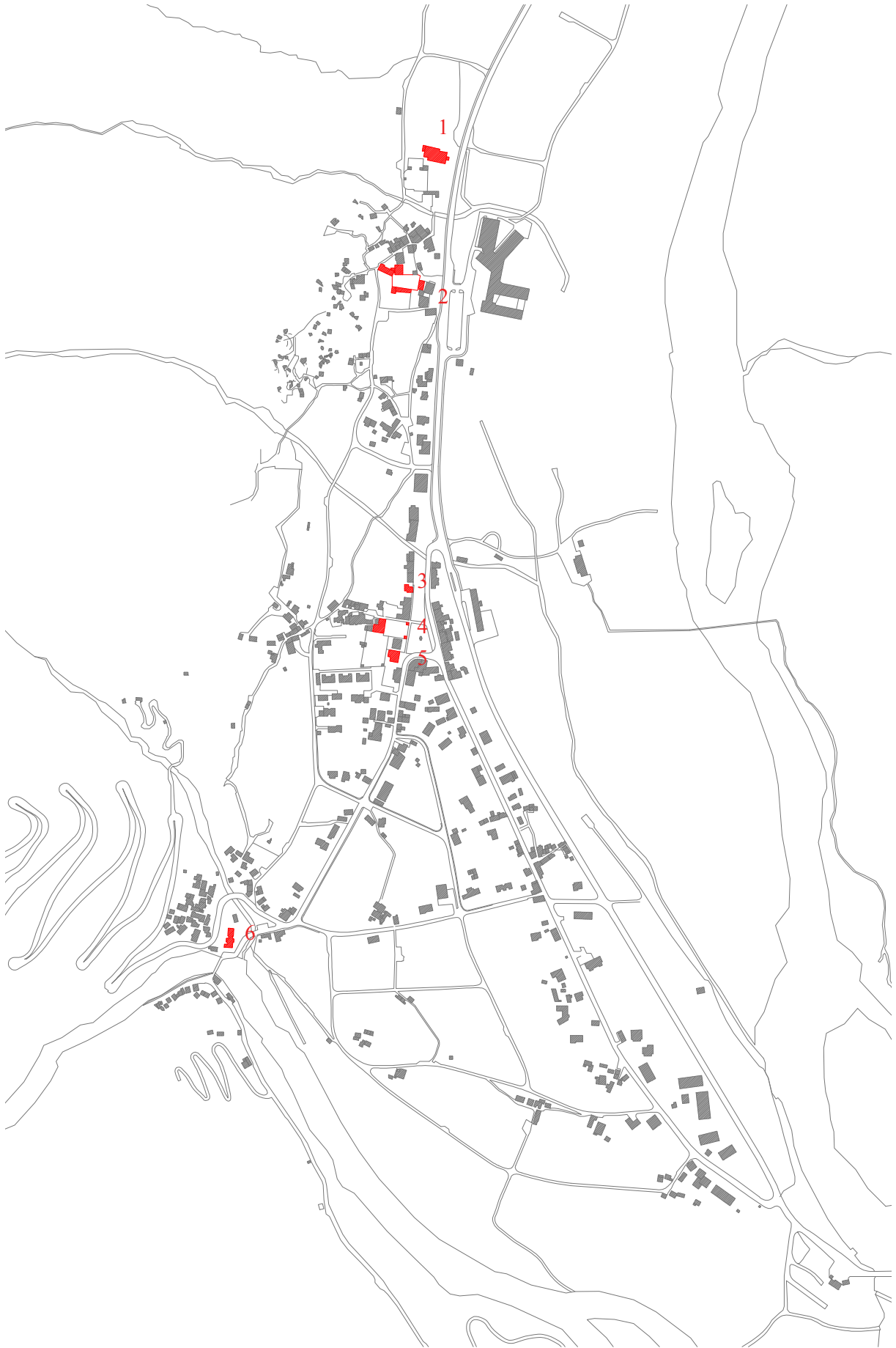


Cevio Vecchio

Cevio Piazza

Cevio Rovana

Les monuments





1 église de Sainte Marie



2 Maison Franzoni à Cevio Vecchio



4 Maison Franzoni à Cevio Piazza



5 Casa del Landfogto

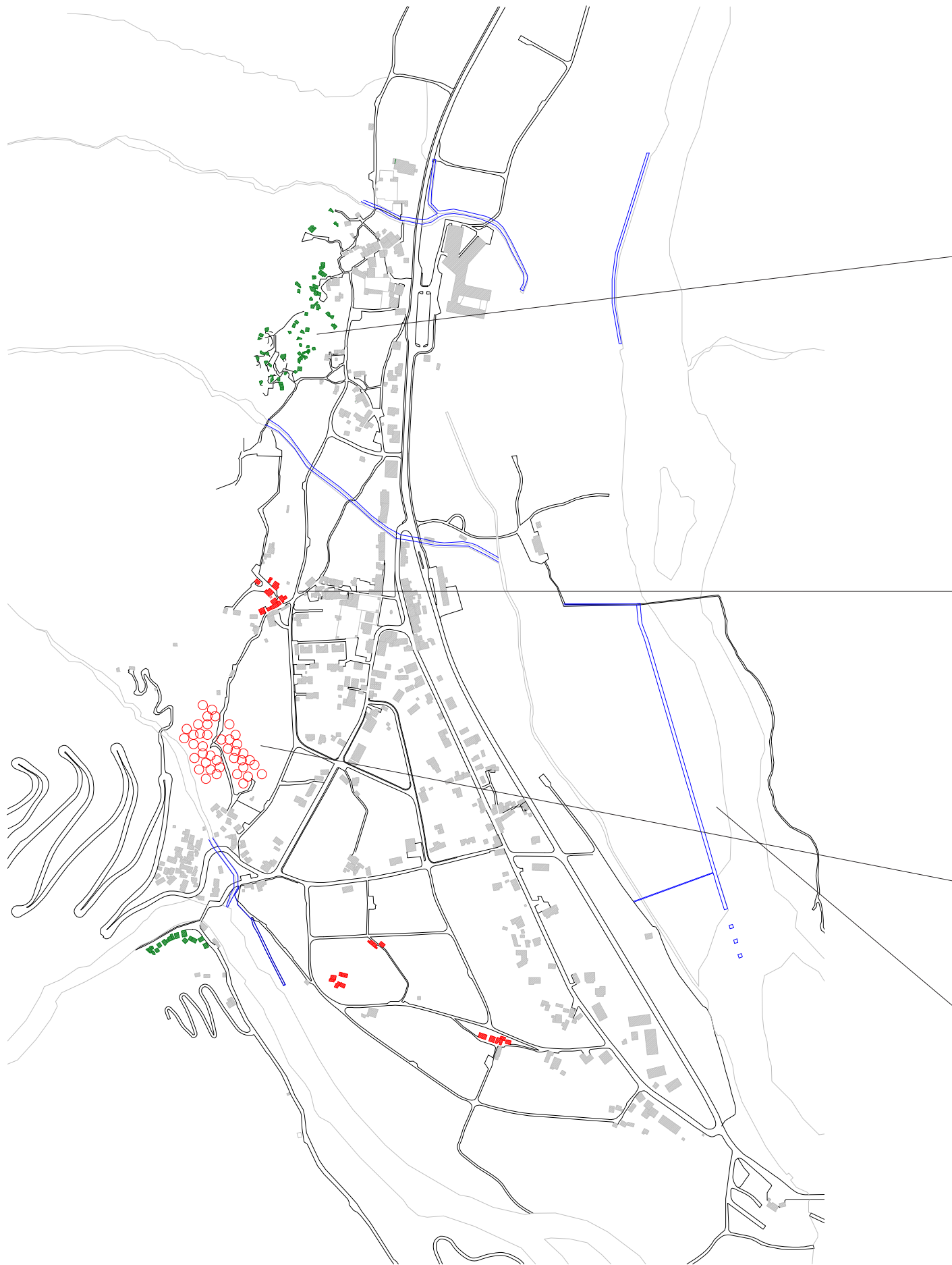


3 Chapelle de Cevio Piazza



6 église de la Vierge du Pont

Traces territoriales



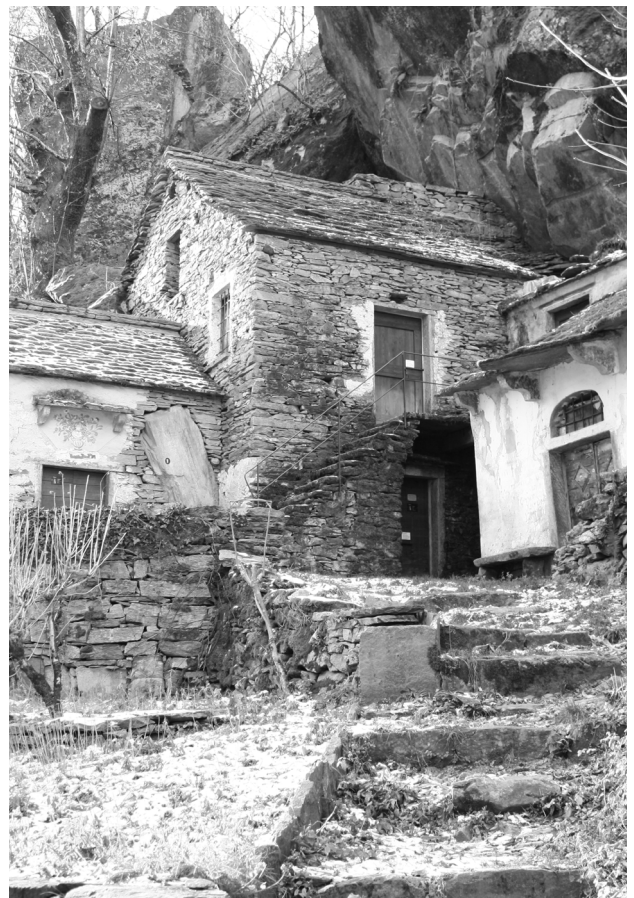
plan des traces territoriales



grotti et caves



granges-étables



grotti



berges et murs de protections

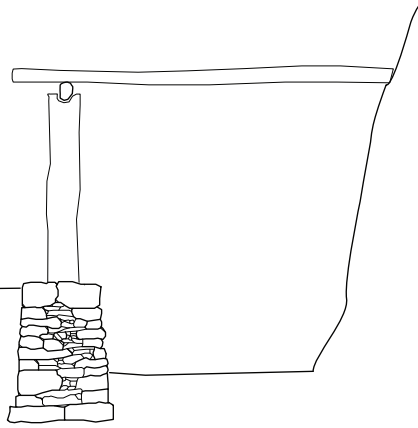


plantation de châtaigner

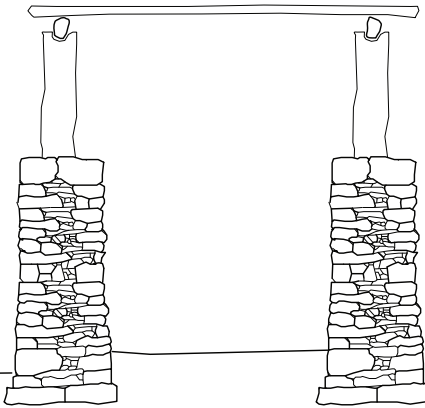
Les «caraa»
le parcours de la pierre



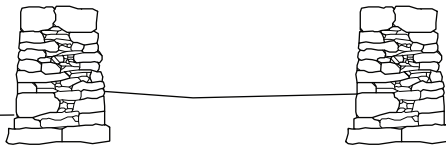
plan des murs



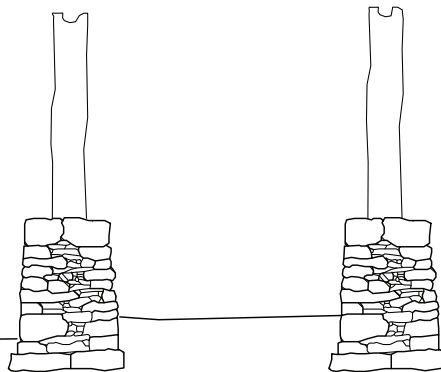
caraa contre rocher



caraa avec pergola



caraa simple

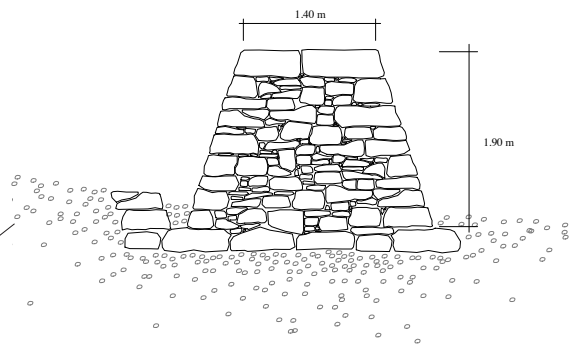


carasc

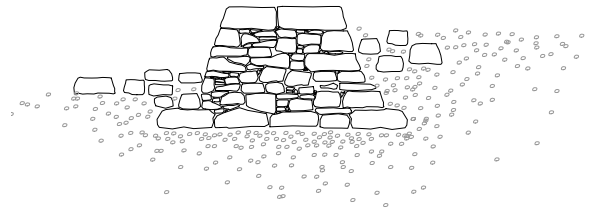
Les berges
le parcours de l'eau



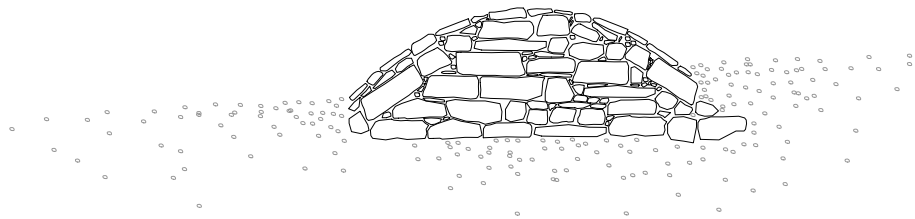
plan des systèmes de protection contre l'eau



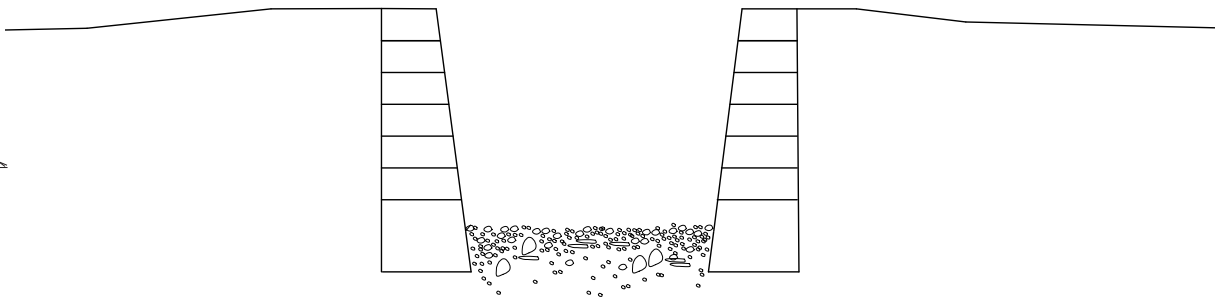
mur contre les cures



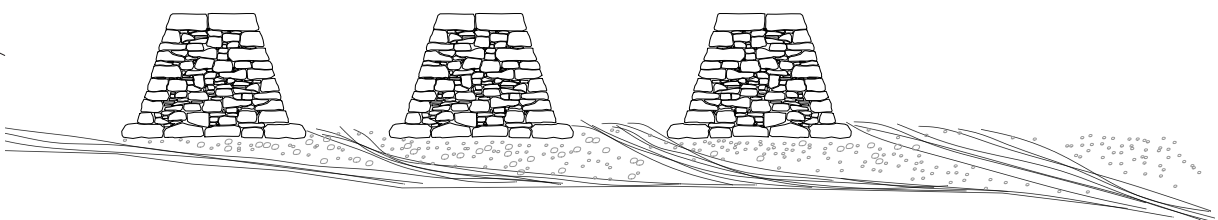
petite berge



système des berges XIXèmes siècle

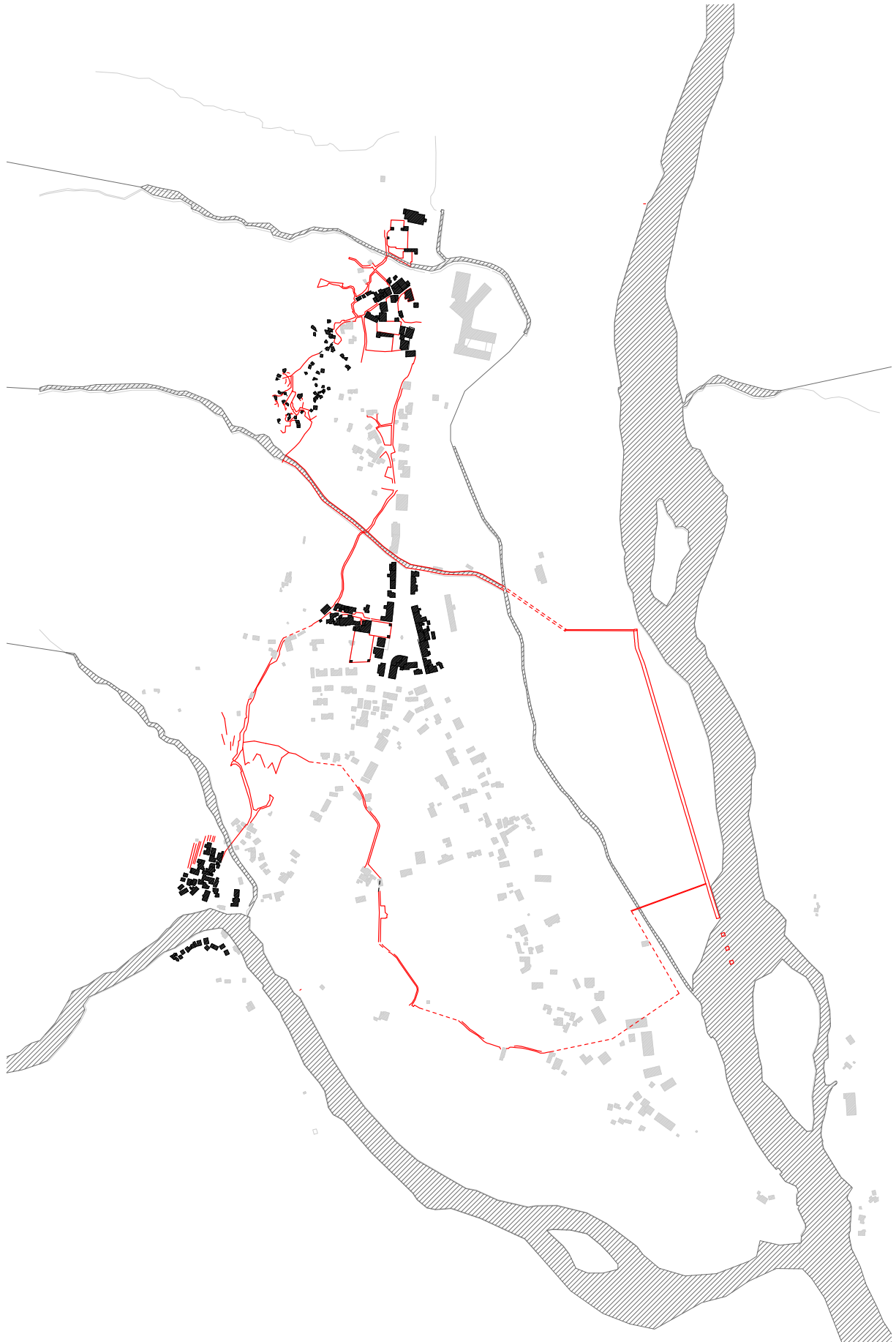


endiguement de sécurité

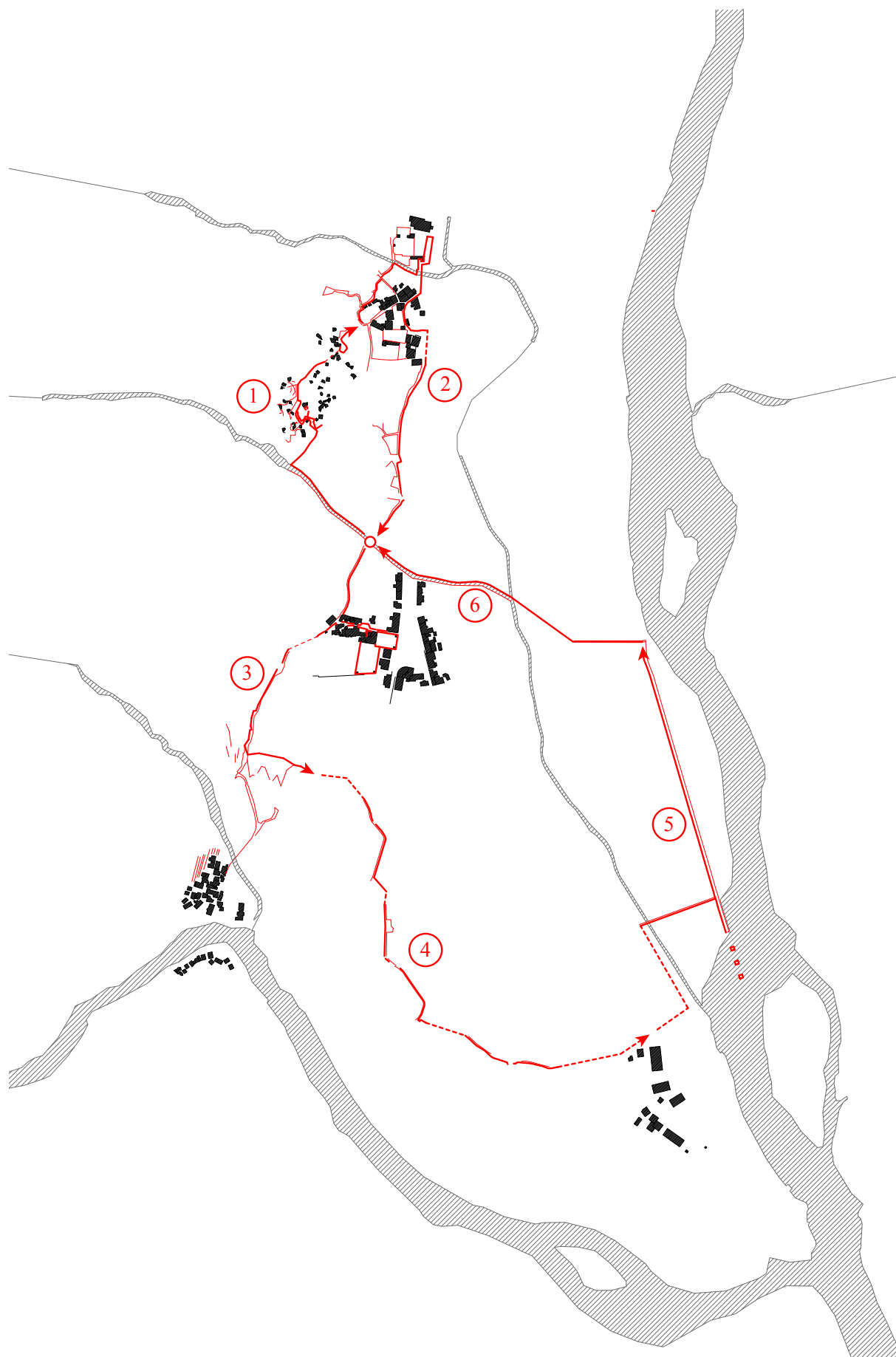


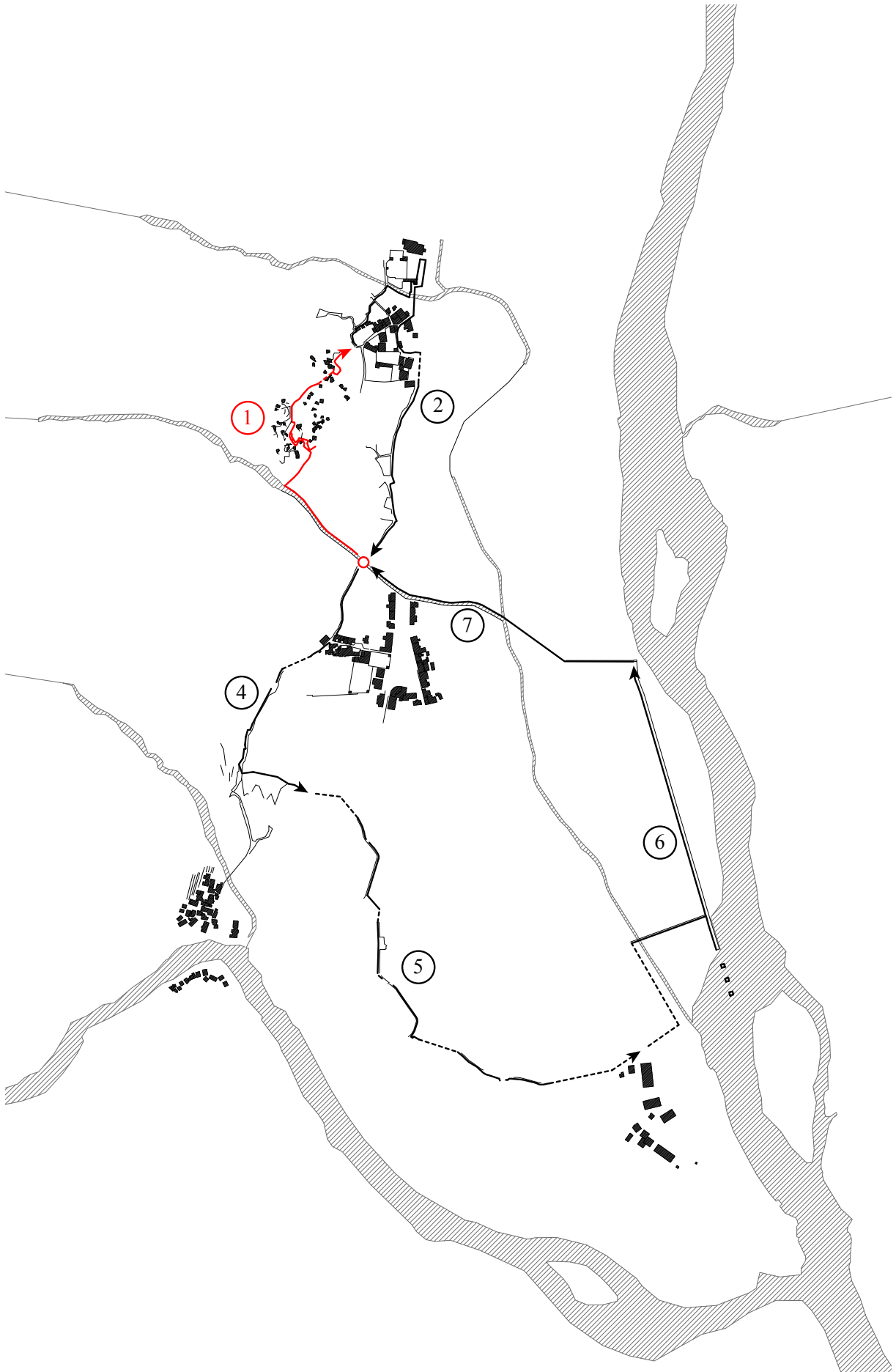
«tartaruge» brise-courant

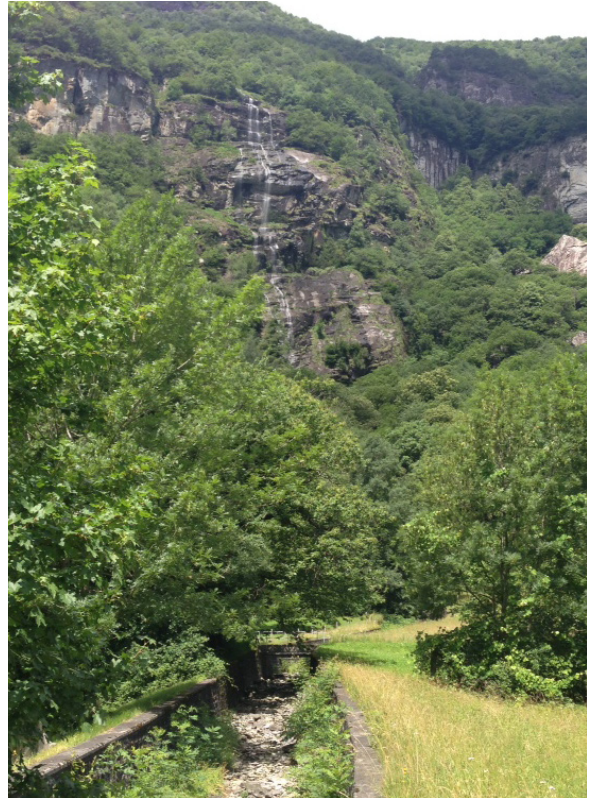
«Gutta cavat lapidem»
un parcours à travers les traces paysagères



parcours de l'eau + parcours de la pierre







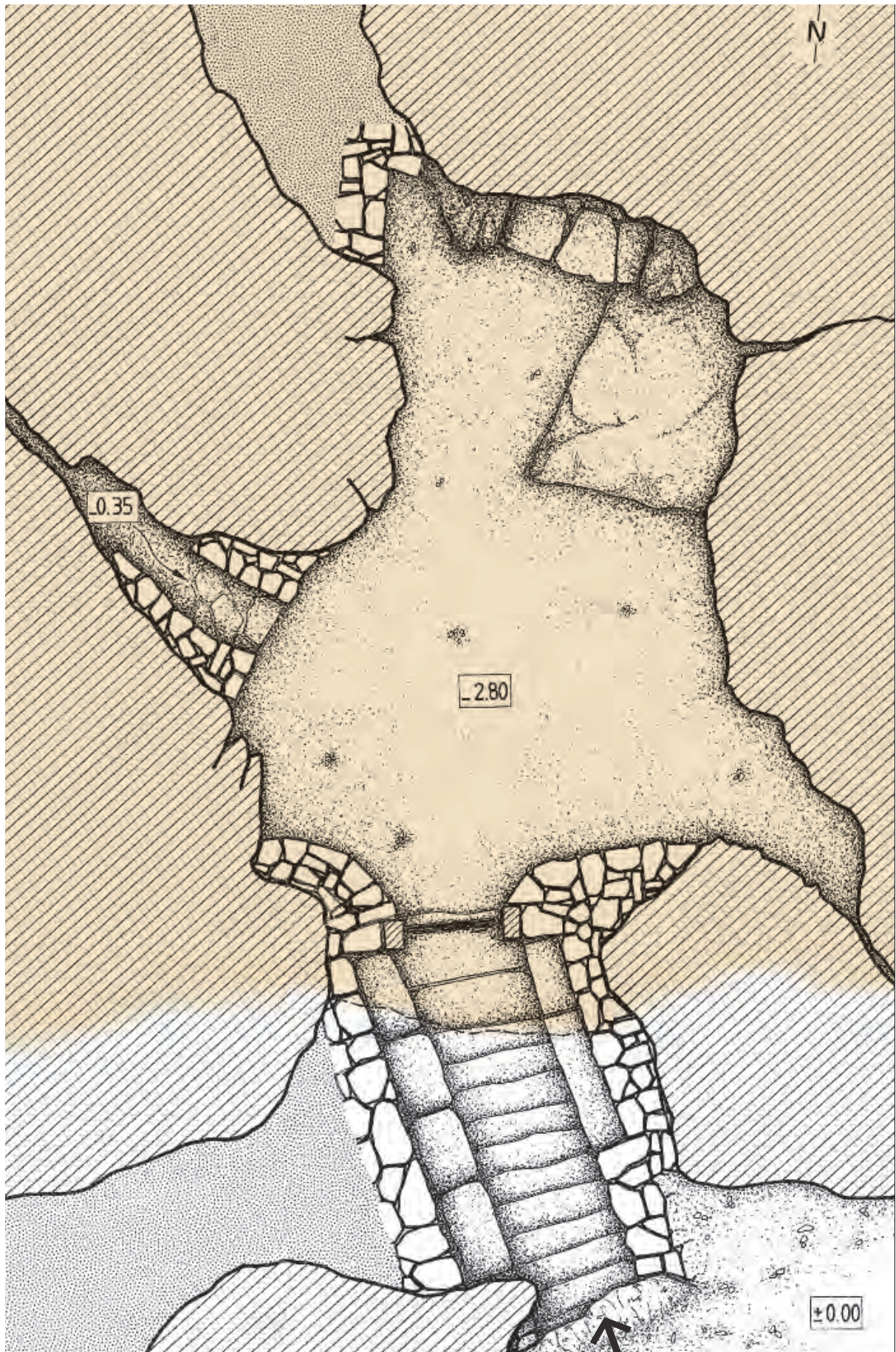
la cascade



grotti et caves



grotti et caves



plan d'une cave



grotti à Cevio Vecchio



intérieur de la cave



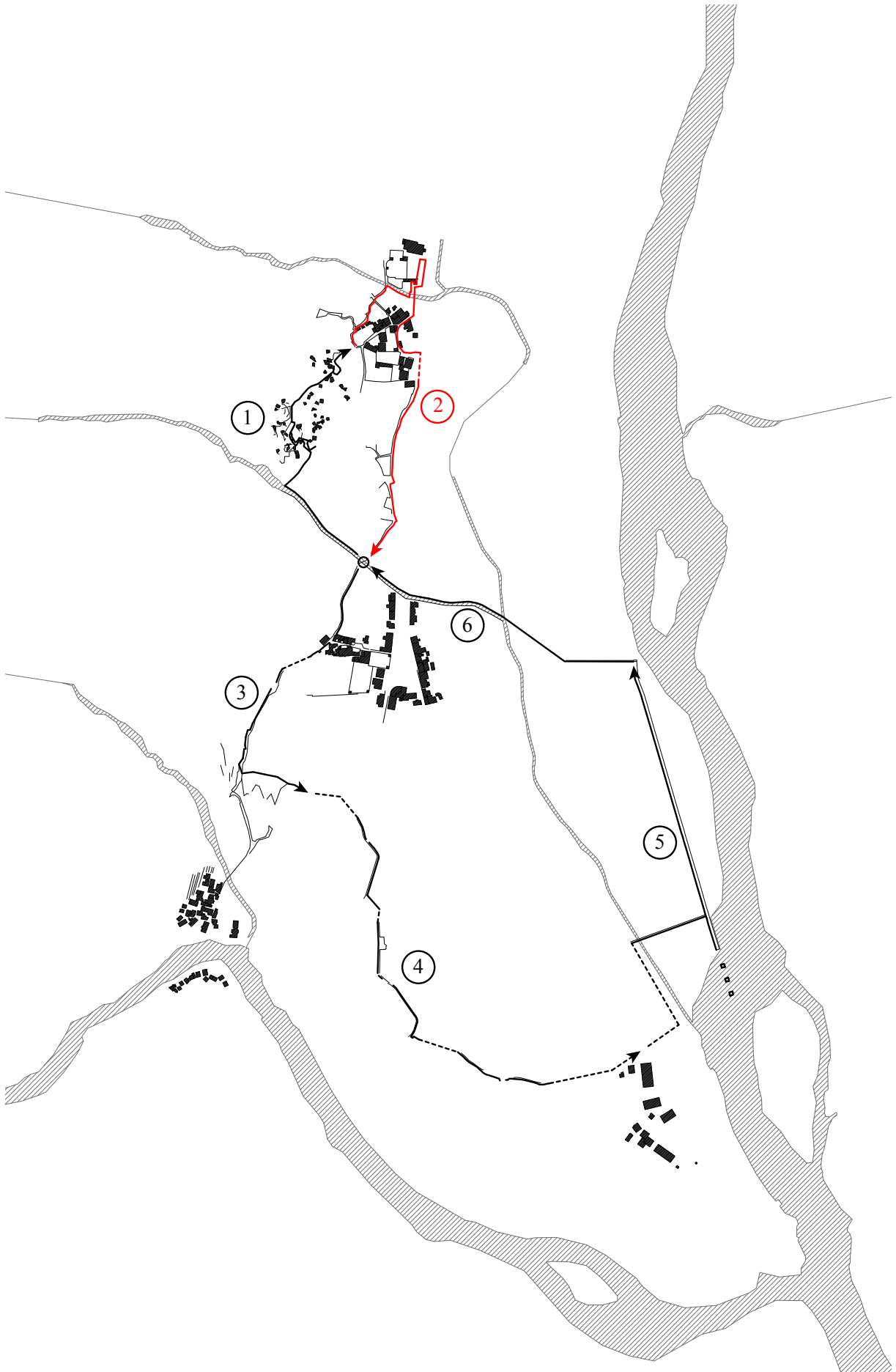
grotti à Cevio Vecchio



cave



cave





caràa avec pergola



grotti



ossarium



église de Cevio Vecchio



église de Cevio Vecchio



caraa avec pergola



caraa conte rocher



l'ancien pressoir



caraa à Cevio Vecchio



Maison Franzoni - cour



Maison Franzoni - potager



caraa avec pergola



caraa simple



schéma des pleins

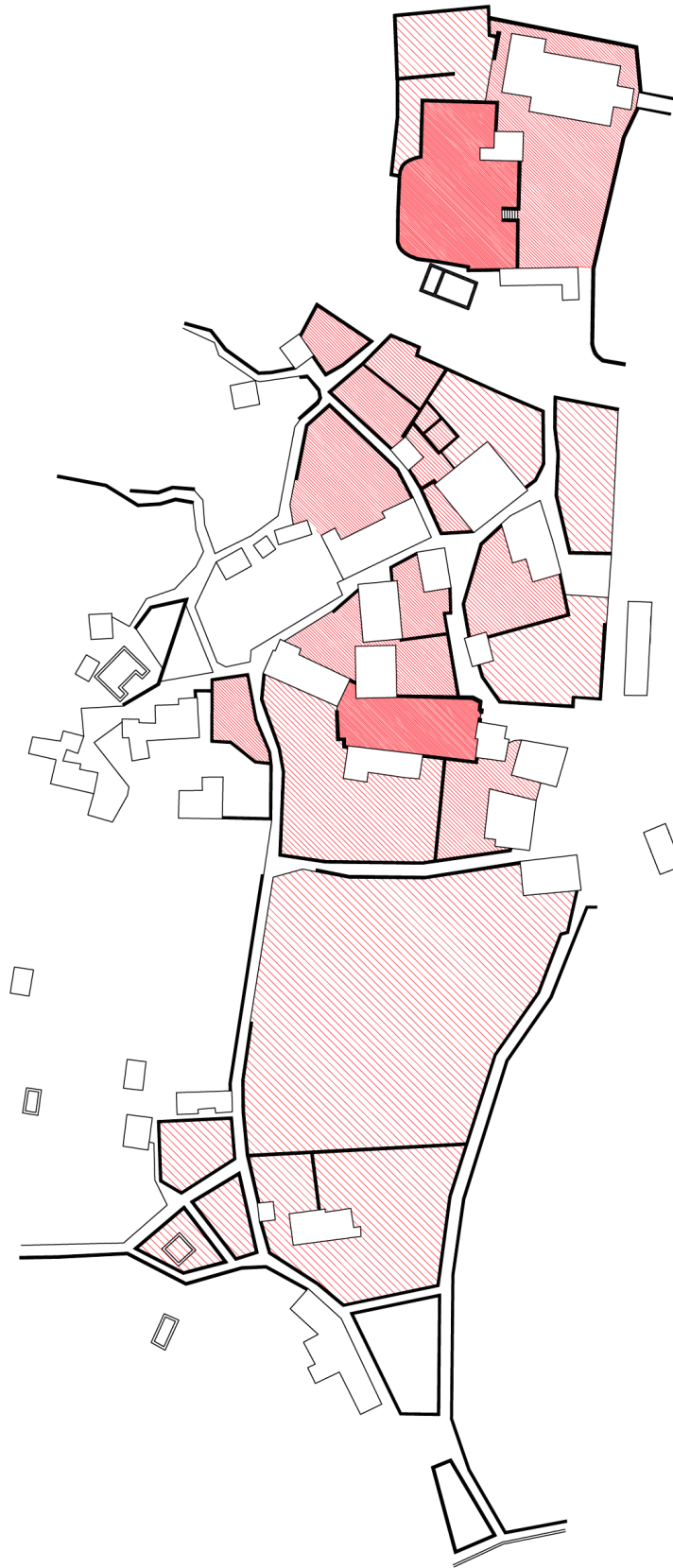
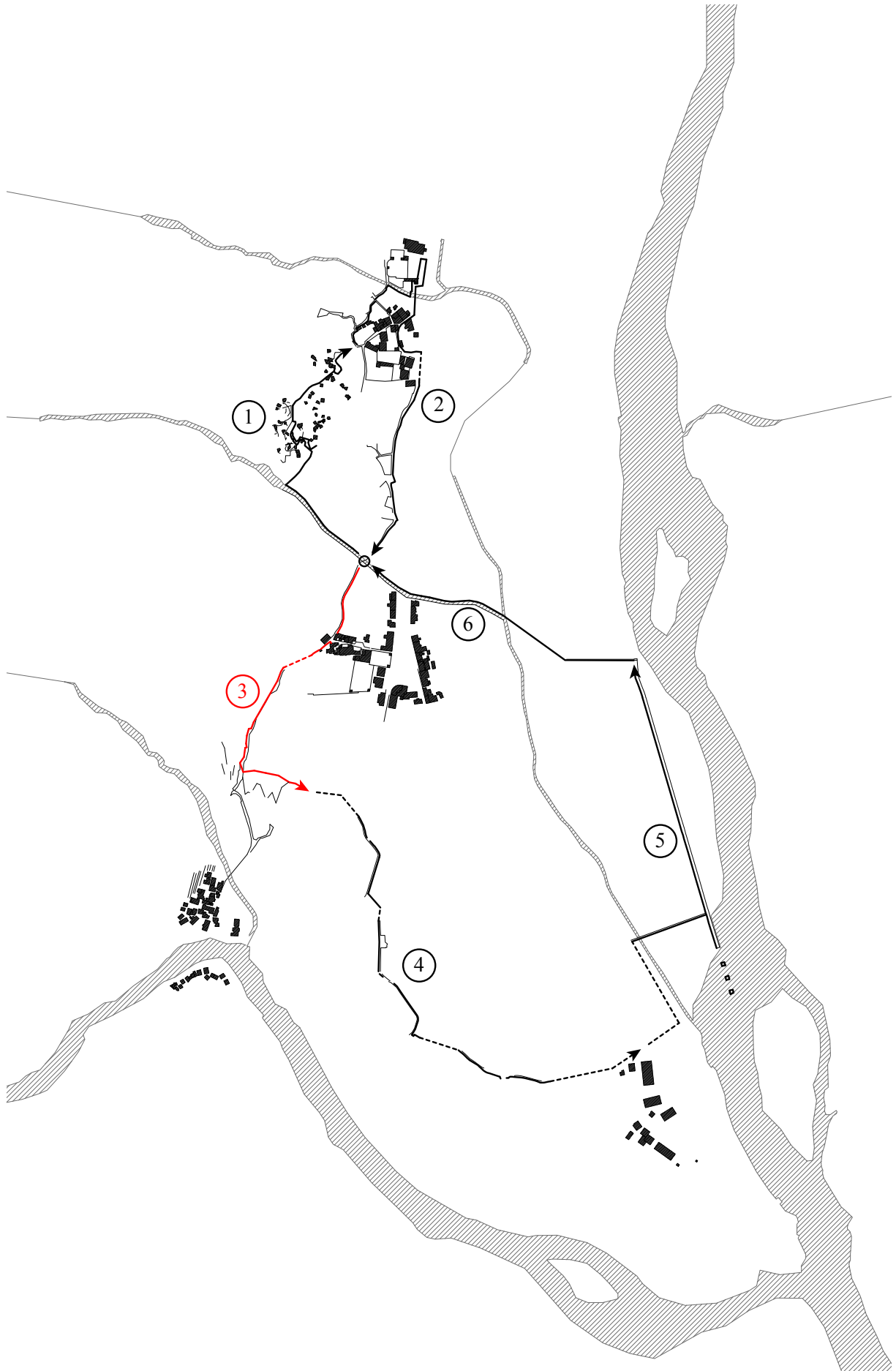


schéma des vides





la cour cultivable



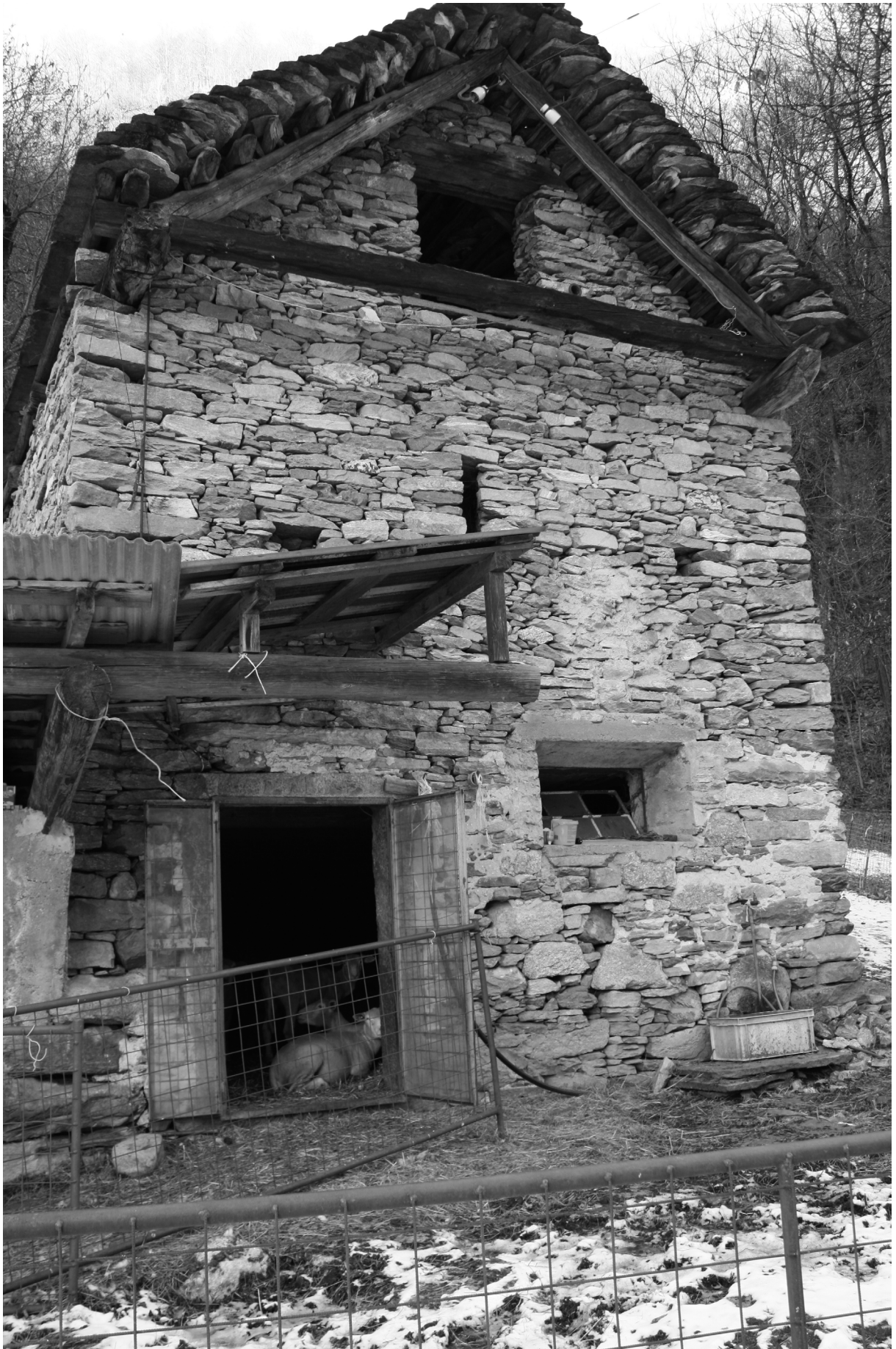
traces des acniens caraa



traces des anciens caraa



tissu traditionnel à proximité de Cevio Piazza



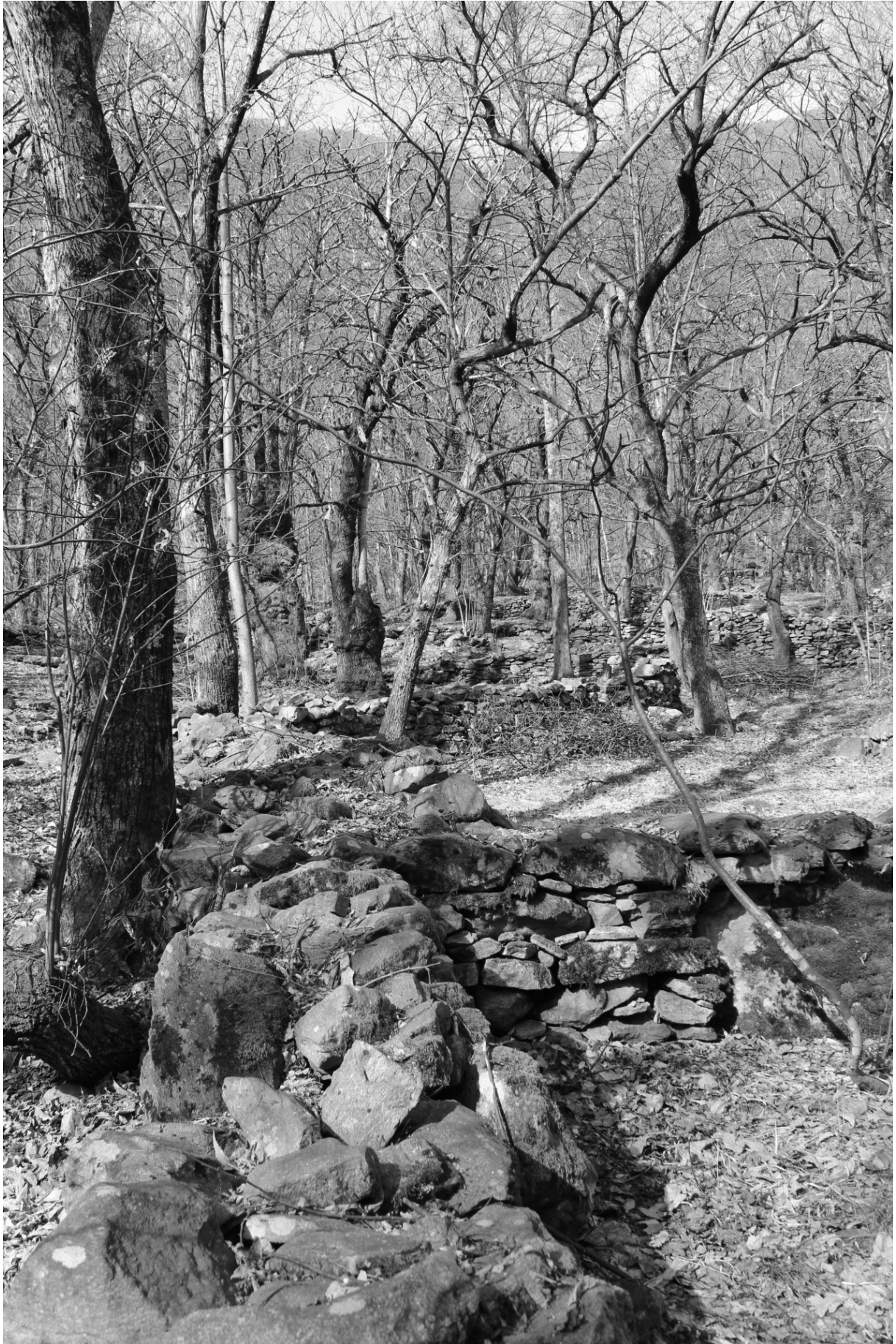
les grandes-étables



les terrassements des vignes



caraa hauts



plantation des chataigners abandonnée



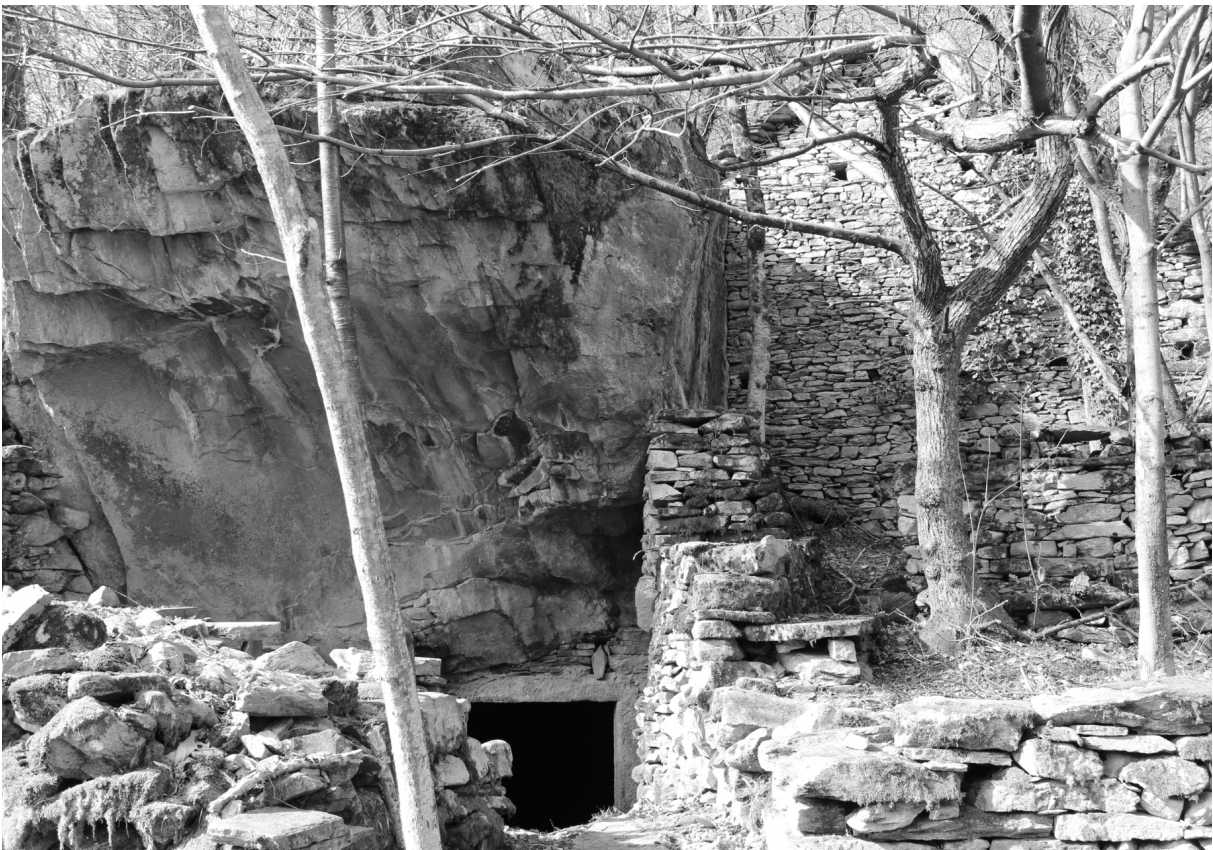
anciens murs des pâturages



murs et chataigniers



murs



cave



Cevio Rovana



les grotti de Cevio Rovana

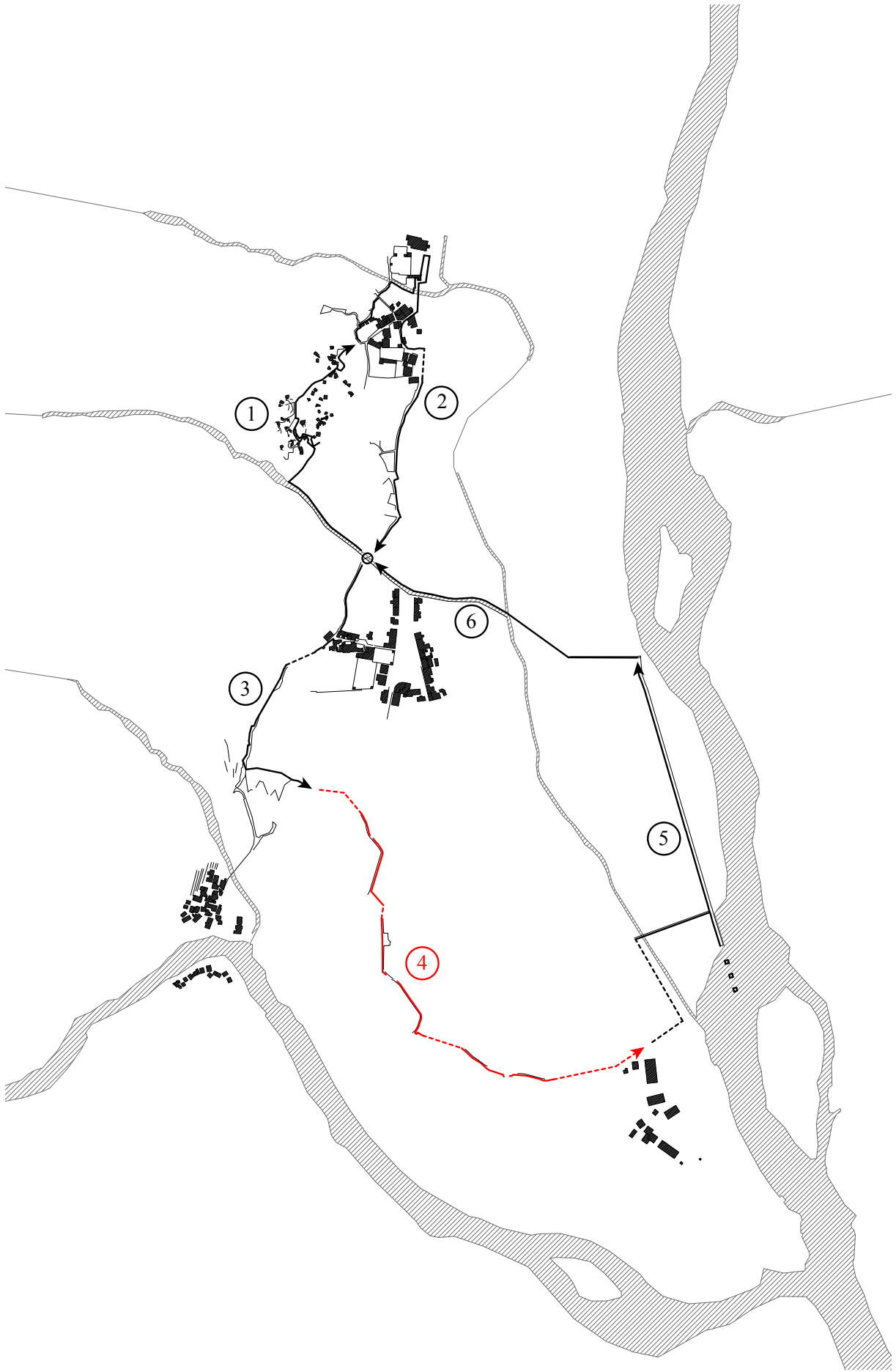


la carrière de Boschetto





vue depuis la carrière de Boschetto vers le nord





pegolas de vigne



caraa entre les chapms



caraa simpe



caraa simple



caraa avec carasc



ancienne maison abandonnée

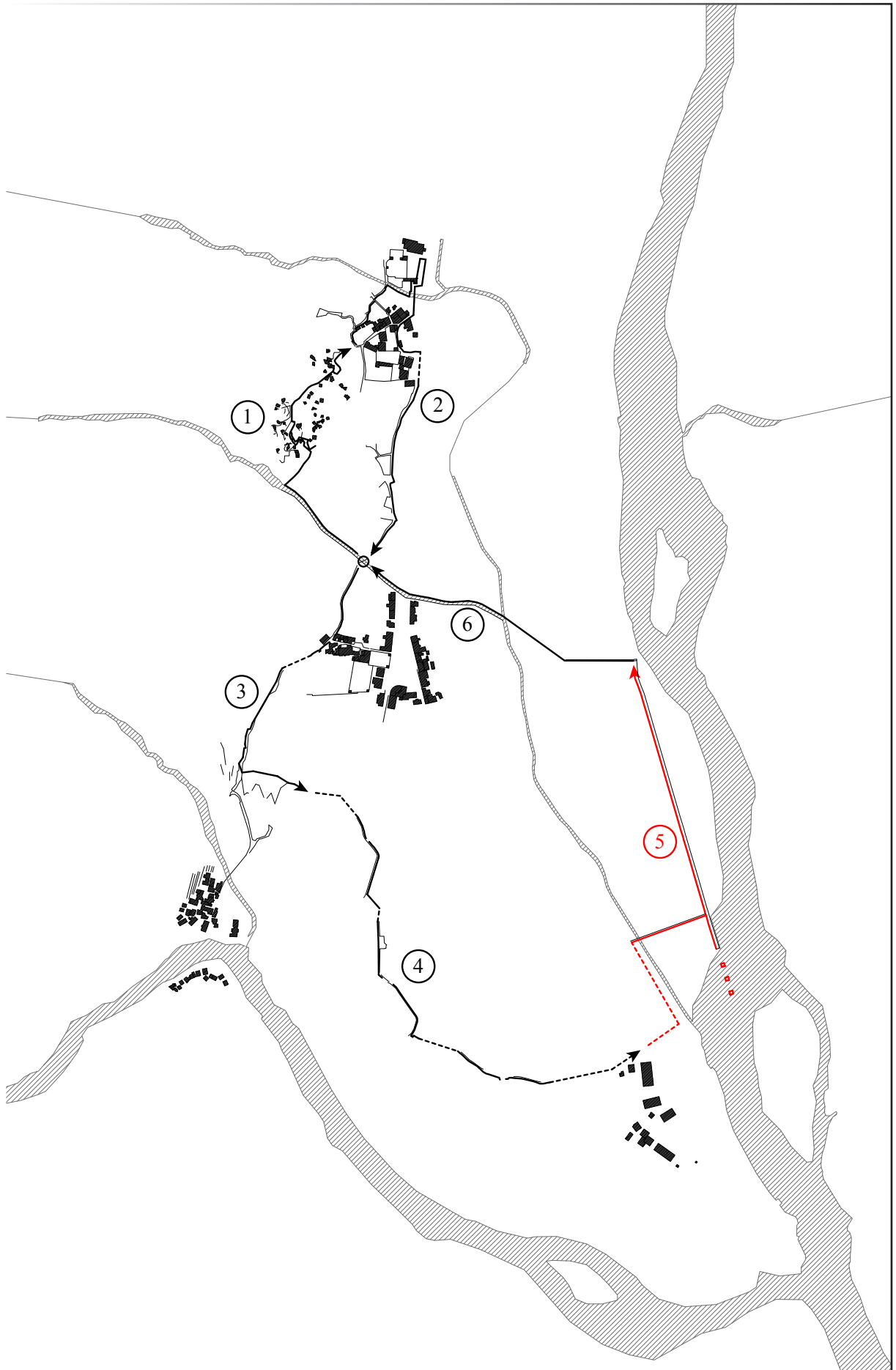


entrepôt de granite





panoramique vers le sud





les tartarughe



les murs de protection



mur de protection conte la crue de la Maggia



mur de protection contre la crue de la Maggia





berges



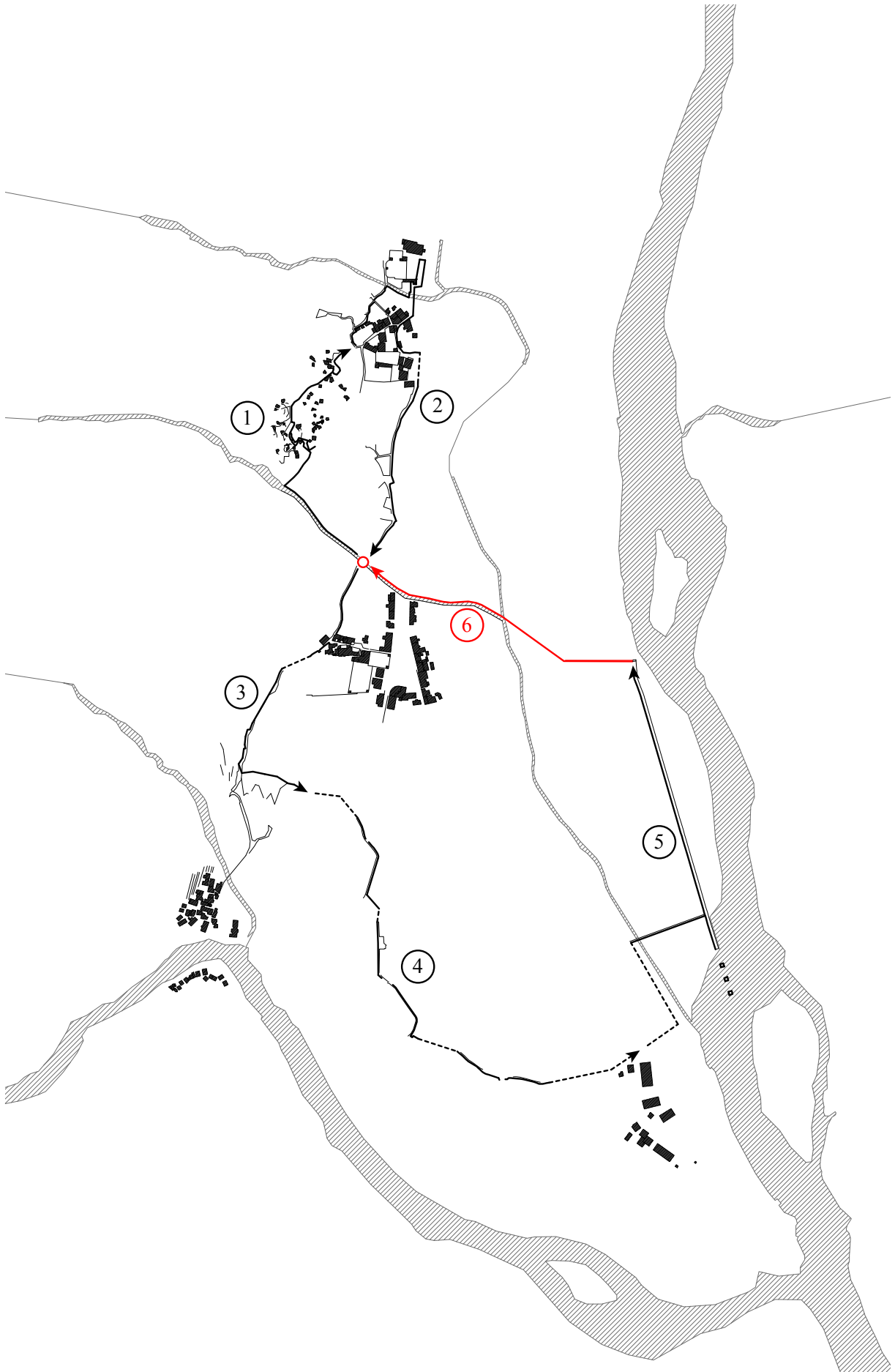
berges



rivière Maggia



l'eau de la Maggia





canal sec



canal endigué



Cevio Piazza



villa bourgeoise Cevio Piazza



Cevio Piazza

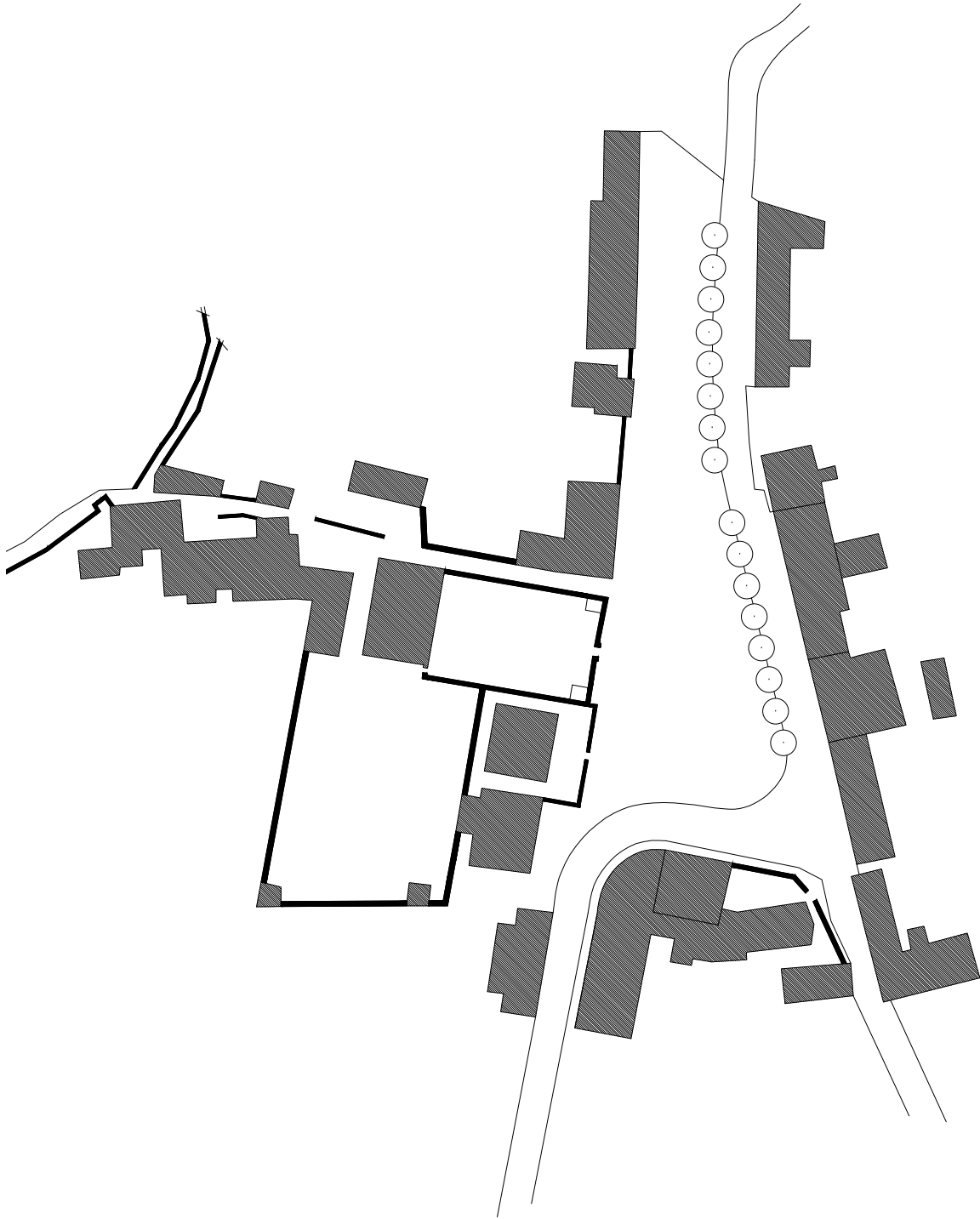




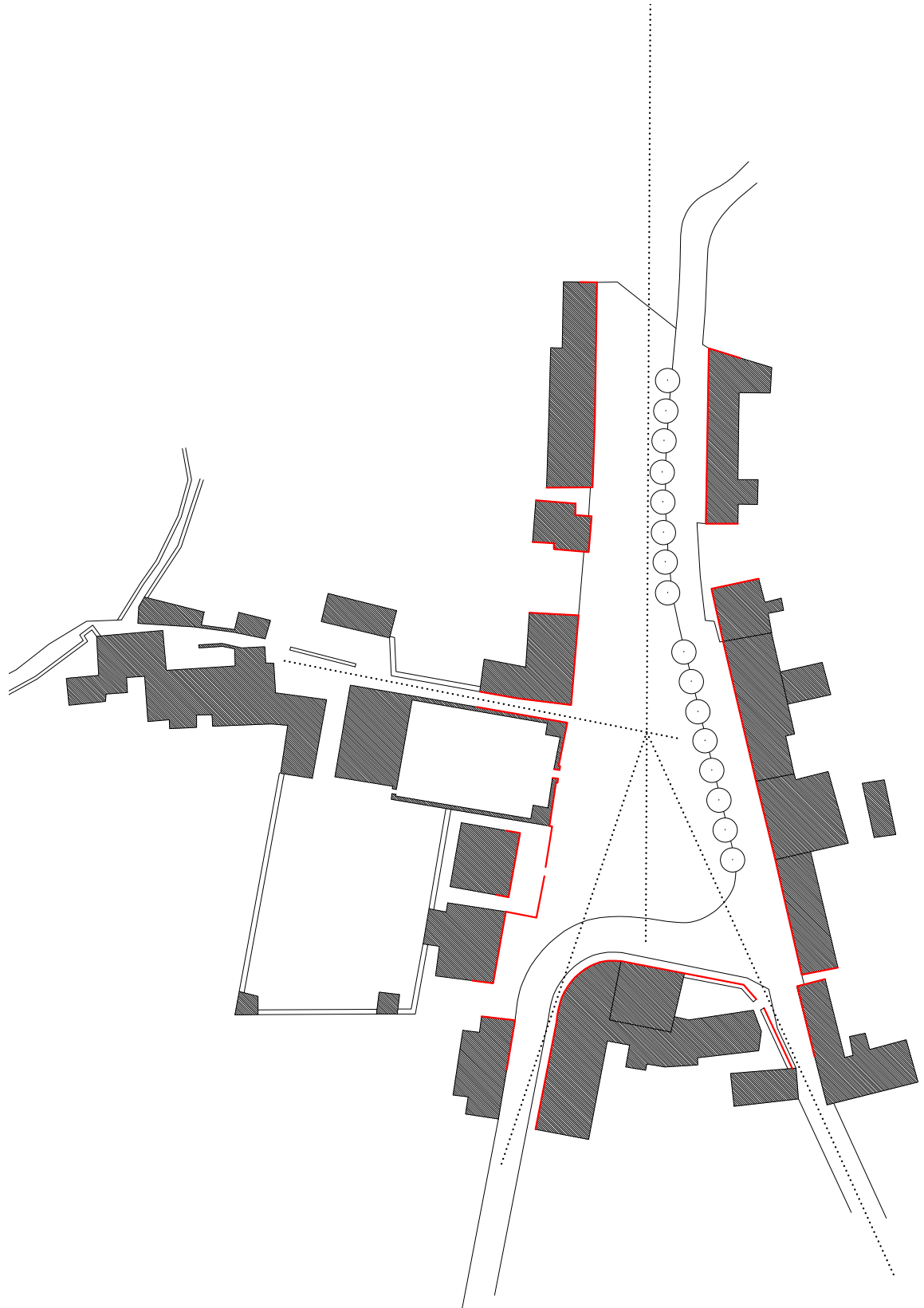
panoramique de la place



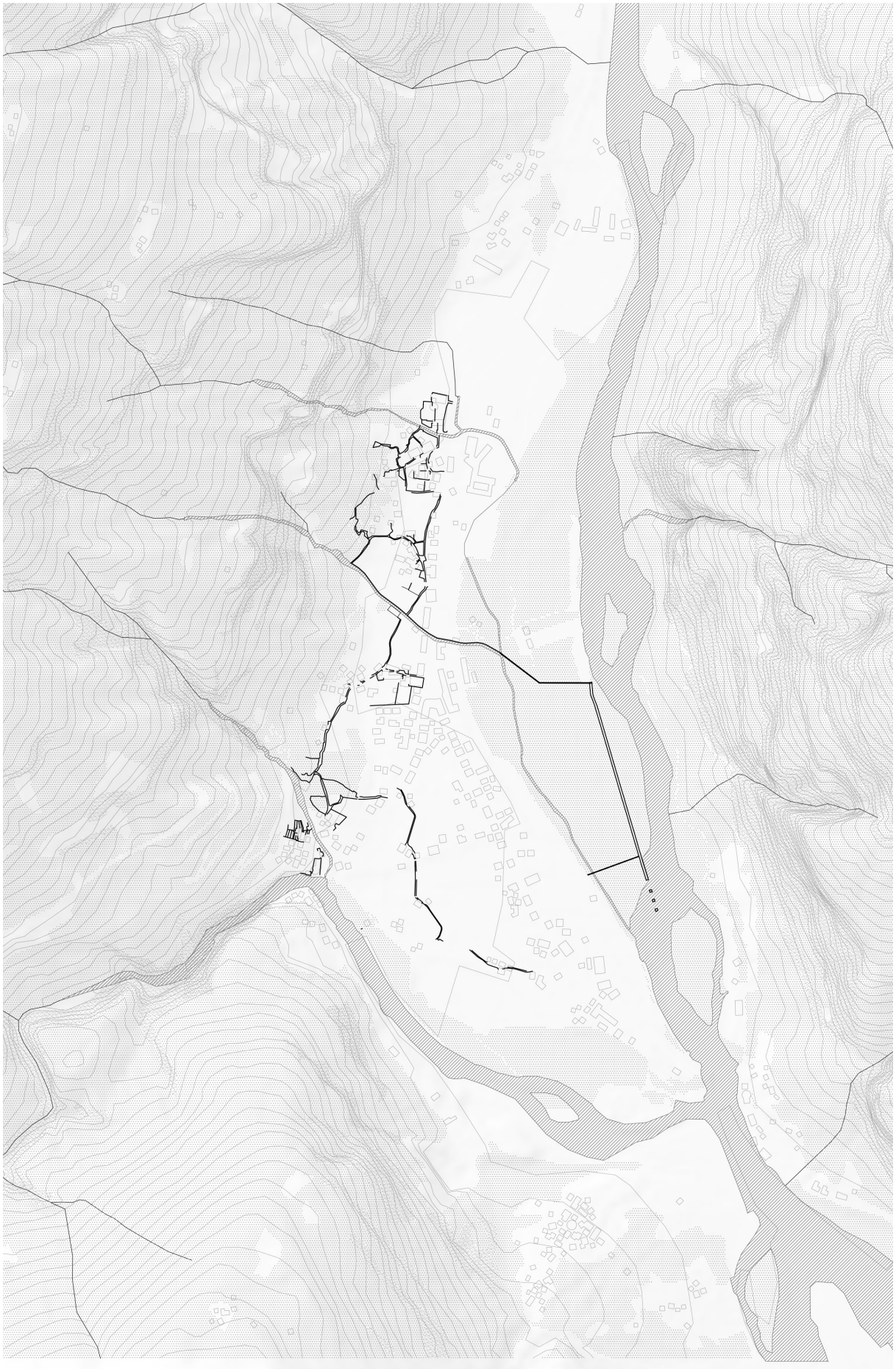
élévation de la place

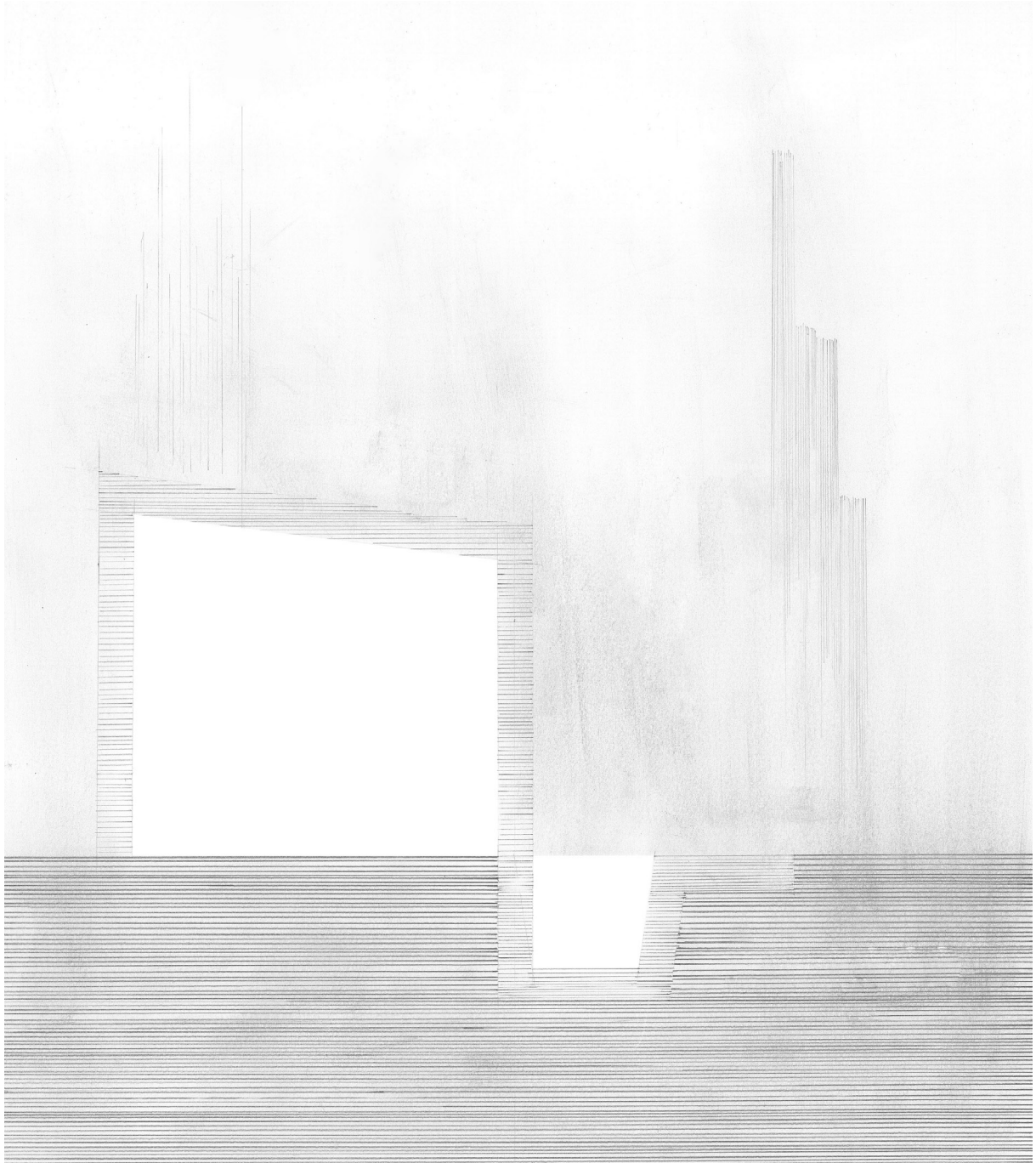


conformation de la place



alignements historiques et arrivée des axes de relation

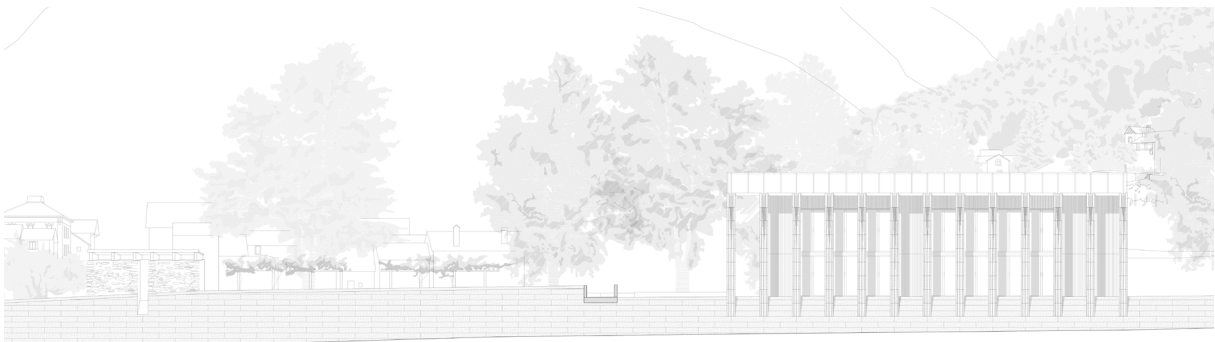




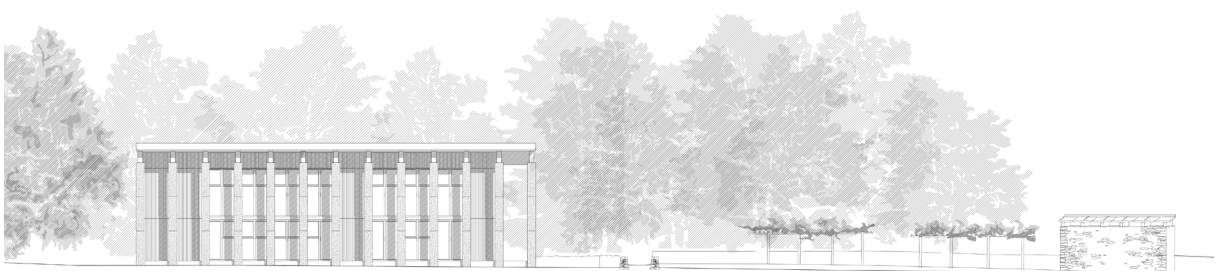
La maison de la pierre



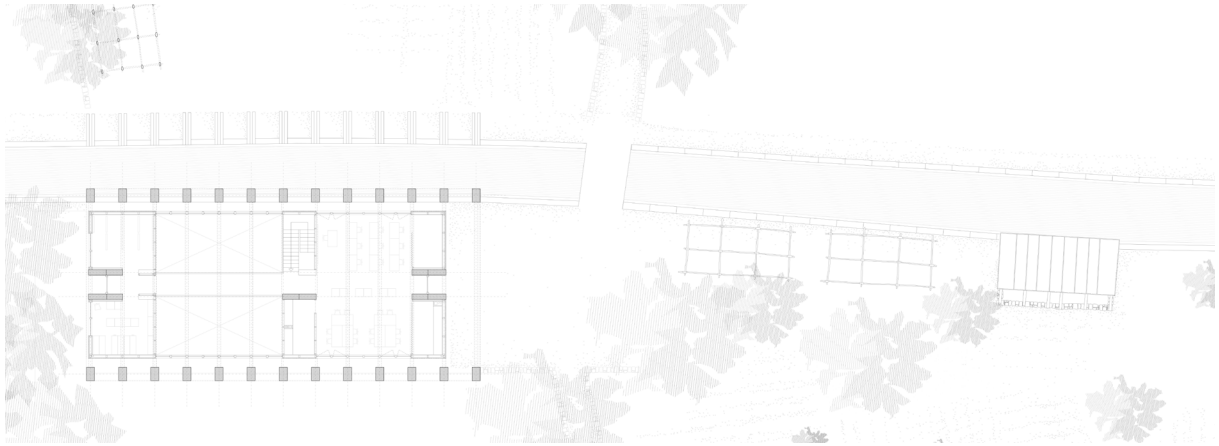
plan de situation



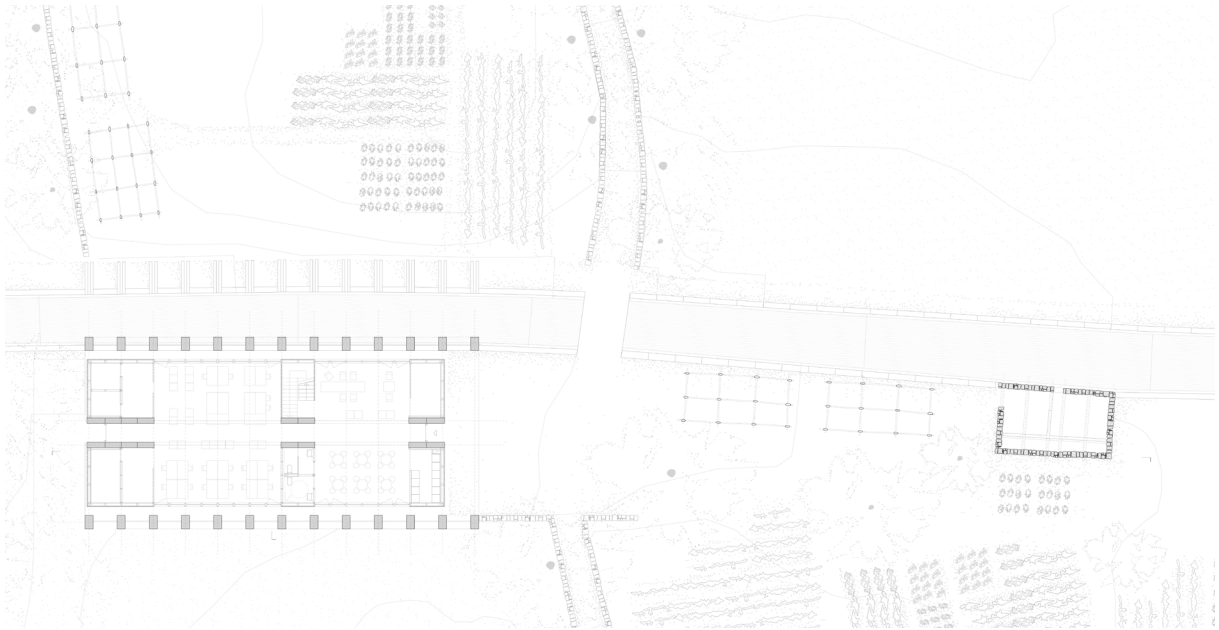
élévation sur le canal



élévation sur la cour



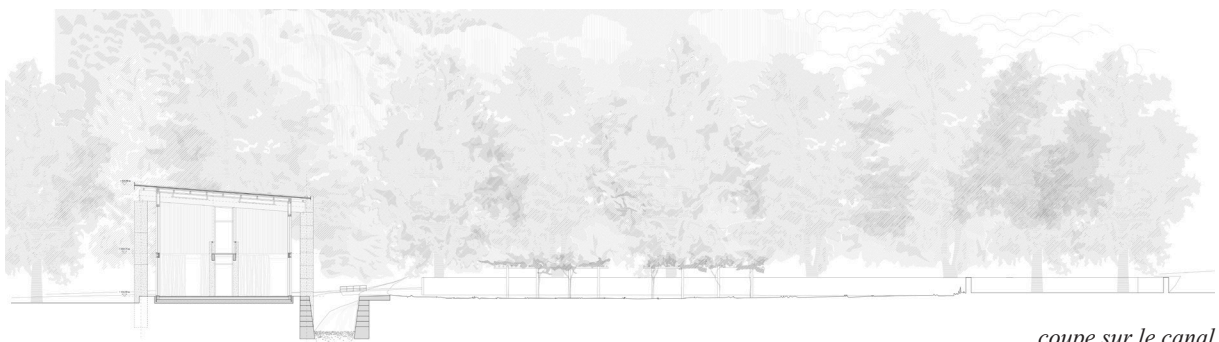
plan du premier étage



plan du rez-de-chausée



coupe longitudinale



coupe sur le canal