

## Three-dimensional numerical modeling of flow field in rectangular shallow reservoirs

T. Esmacili & T. Sumi

*Department of Urban Management, Graduate School of Engineering, Kyoto University, Kyoto, Japan*

S.A. Kantoush

*Department of Civil Engineering, German University in Cairo (GUC), Cairo, Egypt*

A.J. Schleiss

*Ecole Polytechnique de Lausanne (EPFL), Laboratory of Hydraulic Constructions (LCH), Lausanne, Switzerland*

S. Haun

*Norwegian University of Science and Technology (NTNU), Trondheim, Norway*

**ABSTRACT:** Flow field in shallow waters, which is characterized by its complex mixing process and inherent dynamic nature, is interesting mainly due to its practical importance (e. g. in free flushing operation and sedimentation in large reservoirs). 3D numerical models make it possible to track two-dimensional large turbulence coherent structures, which are the dominant phenomenon in shallow reservoirs flow field. In the present study a fully three-dimensional numerical model SSIIM that employs the Finite Volume Approach (FVM) was utilized to reproduce the 3D flow field. Various shallow reservoir geometries with fixed and deformed equilibrium bed were considered. The measurements by Large-Scale Particle Image Velocimetry techniques (LSPIV) and Ultrasonic Doppler Velocity Profiler (UVP) over the flow depth were used for model validation. Outcomes revealed reasonable agreement between the simulated and measured flow velocity field even when an asymmetric flow pattern exists in the reservoir.

### 1 INTRODUCTION

Shallow waters are defined as a flow field in which the vertical dimension of fluid domain is significantly smaller than its horizontal dimensions (Yuce & Chen 2003). Wide rivers, lakes, coastal lagoons, estuaries as well as large reservoirs are the examples of shallow waters in the real life. Flow pattern in wide and shallow reservoirs with sudden expansion of inlet section may become unstable, which produces large-scale transverse motions and recirculation zones due to the transverse disturbance because of the high sensitivity of flow pattern to the initial and boundary condition (Dewals et al. 2008). This type of flows is prominent in the nature and also emerges in various engineering applications including sudden expansions (Shapira et al. 1990), compound channels (Ghidaoui & Kolyshkin 1999 and Chu et al. 1991), storage chambers (Adamson et al. 2003), settling tanks (Frey et al. 1993) as well as shallow reservoirs sedimentation (Kantoush et al. 2008a & 2010).

When large-scale transverse motions and turbulent coherent structures emerge in shallow reservoirs, the sediment transportation pattern would be seriously affected by the flow velocity field. Subsequently, measurement of 2D surface velocity and vertical velocity components with high spatial resolution is essential to predict the favorable sedimentation zone. Such kind of knowledge leads to more efficient sediment management strategies in reservoirs. Also, assessment of the flow field is necessary to characterize the domain of main jet flow, reverse flow and eddies within a shallow reservoir.

Kantoush (2007) presented a comprehensive review of experimental tests in shallow reservoirs with transverse flow motions in symmetric channel expansions. The observations revealed that asymmetric flow pattern can be developed under a certain geometric and hydraulic condition even if the symmetric geometry and hydraulic condition is employed. Same outcome has been obtained by Adamson et al. (2003) and Stovin & Saul (1996) regarding the storage tank sedimentation and storage chambers, respectively. However, most of the studies in the literature considered the sudden plane expansions of an infinite length and studies focusing on various geometric and hydraulic parameters are very limited.

Mizushima & Shiotani (2001) used numerical model for studying the flow instabilities in symmetric channels with sudden expanded section. Dewals et al. (2008) and Dufresne et al. (2011) used 2D numerical models to investigate the flow pattern distribution in shallow reservoirs. Nonetheless, the one and two dimensional models are not able to directly simulate the secondary current influences in complex 3D flows, especially on deformed beds, since the complexity of flow pattern is further magnified.

In the present study, four different reservoir geometries with different length-to-width (Aspect ratio that is called AR hereafter) and reservoir width to inlet channel width (Expansion ratio that is called ER hereafter) were considered for numerical simulation. The fixed bed and also equilibrium bed after free-flow flushing were used as the initial bed condition as well. Numerical results were compared with the experimental measurements of surface velocity for all cases as well as 3D velocity component for one case and a satisfactory agreement was found between the predicted and observed flow pattern. Furthermore, the numerical model could reproduce the steady asymmetric flow pattern when a perturbation quantifier was introduced.

## 2 MATERIAL AND METHODS

### 2.1 *Experimental setup and conditions*

The experimental tests were carried out at the Laboratory of Hydraulic Constructions of Swiss Federal Institute of Technology (EPFL) in a rectangular reservoir with the maximum inner length (L) of 6 m and width (B) of 4 m. Also, the inlet and outlet rectangular channel width (b) and length (l) were 0.25 m and 1 m respectively. Both channels were installed at the center of upstream and downstream side wall of the reservoir. The different shallow reservoir geometry achieved experimentally by moving the PVC plate walls. The reservoir depth is 0.3 m and the both side walls and bottom is hydraulically smooth and flat. The water level in the reservoir was controlled by a 0.25 m width and 0.3 m height flap gate set up at the end of outlet channel. A moveable frame with 4 m length was mounted on the side walls of the reservoir for installing the measurement devices. Table 1 shows geometrical attributes of four geometries employed in the present study. As for the geometrical parameters,  $ER = B/b$  shows the influence of change in the reservoir width while  $AR = L/B$  is appropriate for describing the effect of variations in the reservoir length (Dewals et al. 2008).

Large Scale Particle Image Velocimetry technique (LSPIV) was used for measuring the surface velocity field. Ultra Sonic Velocity Profiler device (UVP) was employed for providing the 3D flow velocity measurements as well. Also, within the frame work of experimental study, sedimentation and sediment flushing from the shallow reservoirs were investigated (Kantoush et al. 2008b). Non-uniform crushed walnut shells were used. The median size of this non-cohesive light-weight and homogenous grain material was 50  $\mu\text{m}$  with  $\sigma_g$  of 2.4 and a density of 1500  $\text{kg/m}^3$ . The flow discharge rate (Q) and water depth (h) were constant for all experiments as 0.007  $\text{m}^3/\text{s}$  and 0.2 m respectively except for the cases with deformed equilibrium bed. Thus, in all tested configurations with fixed bed, the measured Froude and Reynolds number at the inlet channel were kept constant as  $Fr = 0.1$  and  $Re = 1.75 \times 10^4$ . In case of measurements of flow field on deformed bed after flushing the water level and discharge were 0.1 m and 0.007  $\text{m}^3/\text{s}$  respectively.

Figure 1 illustrates the observed flow streamlines for case T8 and T13. As can be observed, the issuing flow jet deviated to the right hand side which forms asymmetric flow pattern in

Table 1. Experimental configuration and corresponding geometrical parameters.

Case	L(m)	B(m)	Pr(m)*	ER(-)	AR(-)	SF(-)**
T8	6.0	2.0	15.5	8.0	3.0	0.375
T9	6.0	1.0	13.5	4.0	6.0	0.122
T11	5.0	4.0	17.5	16.0	1.25	0.99
T13	3.0	4.0	13.5	16.0	0.75	0.97

\* Pr is the wetted perimeter.

\*\* A is the total reservoir area and SF is the shape factor which defined as  $(A/Pr^2) \times ER$ .

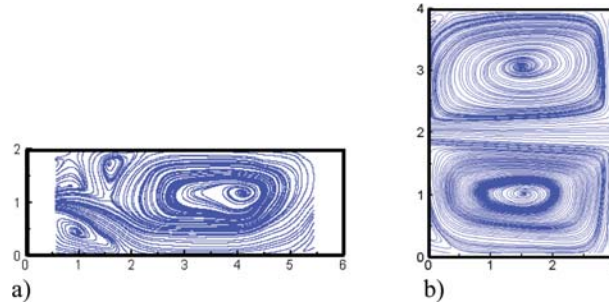


Figure 1. Observed streamlines of the surface flow field for a) case T8 and b) case T13.

case T8. The main eddy rotating anticlockwise in the center part of the reservoir and two others rotate clockwise in the upstream corners. Also, symmetric flow pattern with one main jet trajectory in the centerline and two side eddies has been developed for case T13. Kantoush (2007) concluded that the deviation to the right hand side is due to the random disturbance of the initial boundary condition and a mirror situation would be easily established by disturbing the initial condition slightly. The flow deviation to one side of the reservoir corresponds to the increase of flow velocity in one side of the jet and consequent reduction of the pressure. This process will lead to flow deviation to one side of the reservoir and called Coanda effect (Chiang et al. 2000).

## 2.2 Numerical model & features

Fully 3D numerical model SSIIM was employed in this study. The numerical model solves the mass conservation and Reynolds-averaged Navier-Stokes equation in three dimensions (Equation 1 and 2) to compute the water motion for turbulent flow as follows.

$$\frac{\partial U_i}{\partial x_i} = 0 \quad (1)$$

$$\frac{\partial U_i}{\partial t} + U_j \frac{\partial U_i}{\partial x_j} = \frac{1}{\rho} \frac{\partial}{\partial x_j} \left( -P \delta_{ij} + \rho v_T \left( \frac{\partial U_i}{\partial x_j} + \frac{\partial U_j}{\partial x_i} \right) \right) \quad (2)$$

in which  $i = 1, 2, 3$  is the representative of three directions; where  $U_i$  is the averaged velocity,  $x$  is the spatial geometrical scale,  $\rho$  is the water density,  $P$  is the Reynolds-averaged pressure,  $\delta_{ij}$  is the Kronecker delta and  $v_T$  is the turbulent eddy-viscosity. For transforming the partial equations into algebraic equations, the finite volume method is applied as discretization method, together with the second order upwind scheme.

The change in water-levels was based on calculated pressure field. The pressure was extrapolated to the water surface and the pressure difference between a surface node and the downstream node was used to estimate the water elevation difference (Olsen 2013). The turbulence is modeled by the standard k- $\epsilon$  model, using constant empirical values (Launder & Spalding 1972). The unknown pressure field is calculated employing Semi Implicit Method for Pressure-Linked Equations, (SIMPLE) method (Patankar 1980). The grid is adaptive and moves with change in the bed and water levels.

The Dirichlet boundary condition for the water inflow (logarithmic velocity distribution) was used while for the water and sediment outflow zero-gradient boundary condition was specified. For the boundary condition at the walls, where there is no water flux, the empirical wall laws introduced by Equation 3 were used:

$$\frac{U}{u^*} = \frac{1}{\kappa} \ln \left( \frac{30y}{k_s} \right) \quad (3)$$

where the shear velocity is denoted  $u^*$ ,  $\kappa$  is the Karman constant equal to 0.4,  $y$  is the distance to the wall and  $k_s$  is the equivalent roughness.

The sediment transport computation for simulating the morphological change is divided into suspended and bed load transport. Suspended load is calculated by solving the transient convection-diffusion equation formula and the bed load is simulated by Van Rijn formula (Van Rijn 1984a). In order to compute the suspended sediment concentration in the cells close to the bed, a specified concentration was used as boundary condition (Van Rijn 1984b). Also, the turbulent diffusivity is calculated by Equation 4.

$$\Gamma_T = \frac{\nu_T}{Sc} \quad (4)$$

where  $Sc$  is the Schmidt number representing the ratio of eddy viscosity coefficient  $\nu_T$  to diffusion coefficient and is set to 1.0 as the default value in SSIIM model (Olsen 2013).

Based on the experimental measurements computational mesh for all reservoir geometries were made. The mesh cell size for case T8, T9, T11 and T13 in X and Y direction was  $5 \text{ cm} \times 1.5 \text{ cm}$ ,  $5 \text{ cm} \times 2.5 \text{ cm}$ ,  $5 \text{ cm} \times 2 \text{ cm}$  and  $2.5 \text{ cm} \times 1 \text{ cm}$  respectively. Considering the 11 cells for vertical grid distribution, the total number of cells over the main reservoir geometry were 174460, 52800, 220000 and 528000 respectively.

### 3 RESULTS AND DISCUSSIONS

#### 3.1 Model calibration

As for the real cases in prototype scale, flow field modeling will provide us useful information about the areas with the potential erosion and deposition (sedimentation) during the anticipated floods. The more accurate the prediction of sedimentation zone, the higher is the efficiency of sediment management strategies.

In the numerical simulation, the time step was calibrated as 2 seconds for run T8 and T9 whereas it was 0.5 second for T11 and T13. In case of flow field modeling on the equilibrium deformed bed, the bed roughness was fixed as 0.00015 m which equals to 3 times the median sediment size.

#### 3.2 Flow field modeling on fixed beds

Simulations have been conducted by employing the geometry and inflow/outflow condition of the experimental model. The k- $\epsilon$  turbulence model was utilized and numerical runs were performed until a steady-state flow condition is obtained. Simulations revealed that the model was not able to reproduce an asymmetric flow pattern when the geometry configuration and hydraulic boundary condition are perfectly symmetric. This is because of the implemented mathematical algorithms that were not aimed to reproduce such kind of artificial numerical outputs.

Due to the fact that symmetric flow pattern was not observed in the experiments for special geometries, Dewals et al. (2008) introduced a slight disturbance in the initial boundary condition for 2D numerical simulations. They employed non-uniform cross-sectional discharge in the inlet boundary to test the stability of the numerical model outputs. In the present study, the same concept of slight disturbance in the inlet boundary condition was implemented for all runs and non-uniform cross-sectional velocity distribution was utilized in the inflow boundary condition. Therefore, the initial velocity magnitude differ 2.5% in one side of the inlet channel comparing to the other side. Such kind of disturbance is inevitable in the experimental set up. Nonetheless, very small perturbation of the inflow condition will impose significant effect on the flow field of case T8 and T9 in the numerical model. The reason can be attributed to the unstable nature of symmetric flow in such geometries which pronounces the high sensitivity of the flow pattern to the inflow boundary condition.

Figure 2 shows the simulated and measured surface velocity magnitudes ( $V$ ) in m/s and flow distribution pattern. As can be clearly seen from Figure 2, asymmetric flow pattern has developed in case T8 and T9 whereas symmetric flow pattern is observed for case T11 and T13.

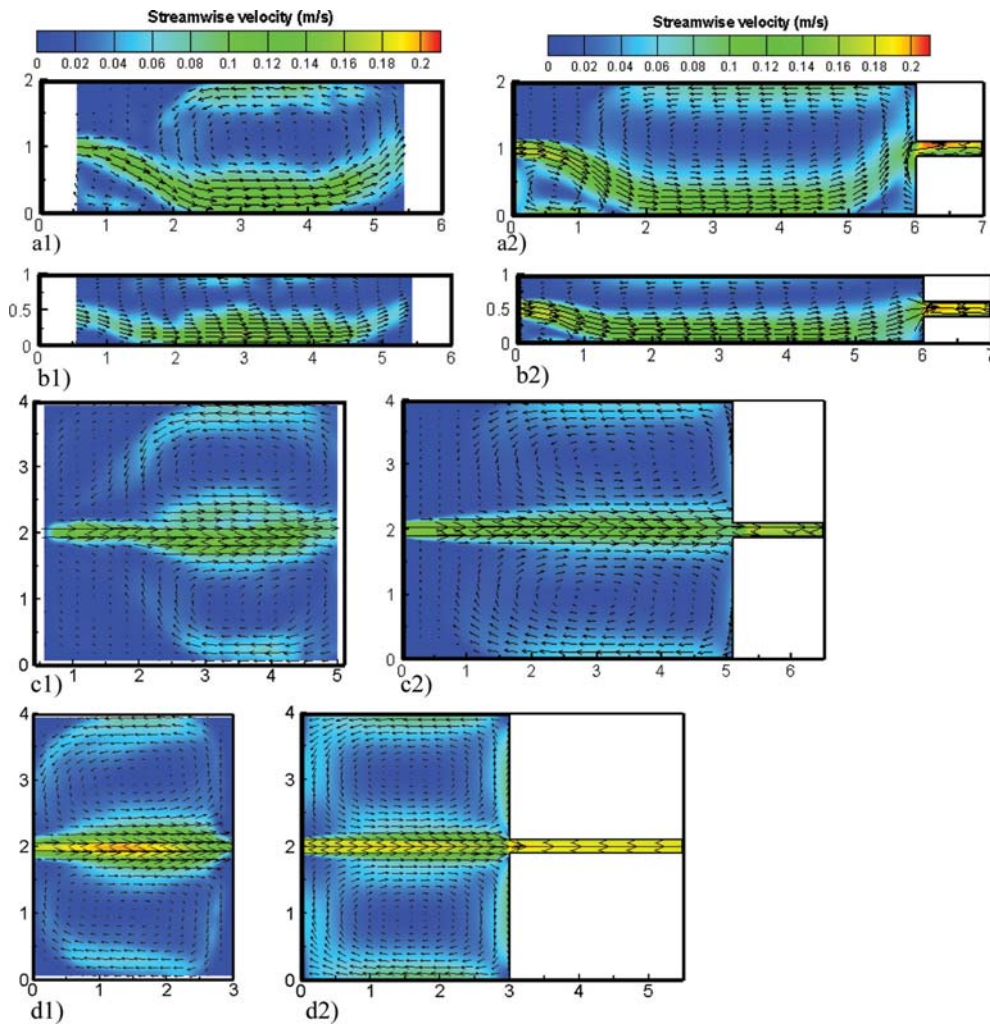


Figure 2. Left: The measured surface velocity field for runs (a1) T8, (b1) T9, (c1) T11 and (d1) T13 respectively and right: corresponding simulated velocity field.



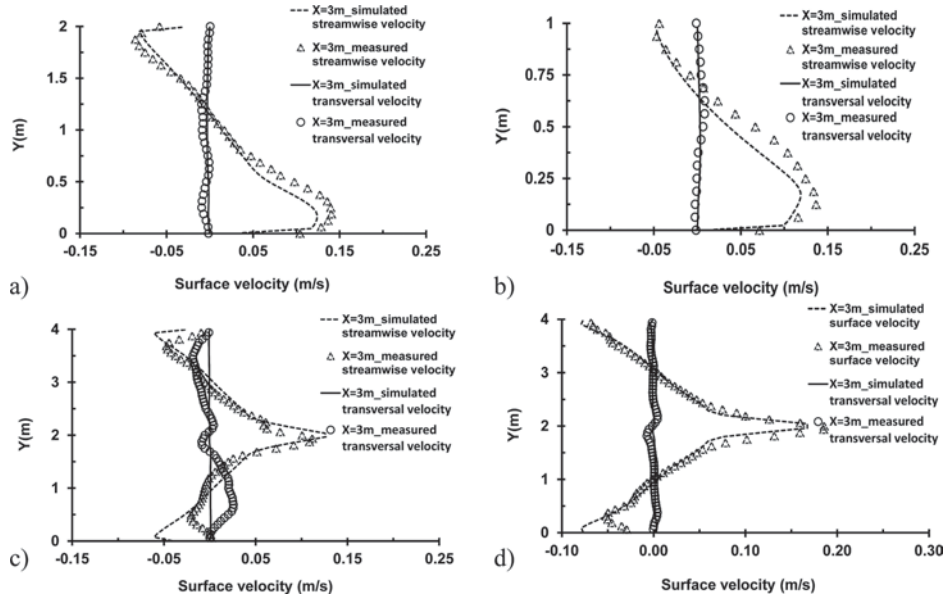


Figure 3. The measured streamwise and transversal surface velocity at the middle cross section of the reservoirs versus simulated surface velocity for (a) T8, (b) T9, (c) T11 and (d) T13.

The model could simulate the surface flow velocity pattern almost similar to the measured one by reproducing the dominant aspects such as the main flow jet trajectory and location of the reverse flow as well as the main vortices and corner gyres. Nevertheless, numerical model outcomes show the straighter and longer reverse flow trajectory than observations for all cases. Consequently, size of the upstream corner gyres in the numerical outputs is smaller than in the experimental measurements. This situation is predominant for case T11 (Figure 2c1 and 2c2).

Figure 3 illustrates the simulated streamwise and transversal surface velocity distribution versus the measured one in the middle cross-section of the reservoirs. Although the numerical model results are globally consistent with the measurements, there is a discrepancy for transversal surface velocity of case T11. The reason could be the concentrated flow pattern and lower diffusion of the main jet as well as the reverse flow in the numerical model outcomes.

The vertical distribution of flow velocity field is important for analyzing the sediment transport in reservoirs. Thus, the numerically simulated 3D flow velocity field was compared with the measured 3D velocity components provided by the UVP. A set of three UVP probes which were inclined at  $20^\circ$  to the vertical axis, allowed measuring the 3D flow field. The first valid UVP measurements were located at 12.5 cm away from the side walls and 2.5 cm from the free water surface (Kantoush, 2008b). Figure 4a and 4b demonstrates the longitudinal velocity distribution over the flow depth, at upstream, middle, and downstream area of case T9. It can be seen that the higher longitudinal velocity has been deflected towards the right bank side and the reverse flow is reproduced beside the left bank side. Such kind of change in the flow direction across the reservoir is also qualitatively consistent with the experimental observations.

Velocity distribution in longitudinal, lateral and vertical directions (U, V, W respectively) at  $x = 5.5$  m and  $y = 0.375$  m from the right bank of the case T9 has been demonstrated in Figure 4c in order to quantitative assessment of the numerical model outputs. As for the longitudinal velocity, the numerical model overestimates the magnitudes compared with the experimental measurements while the lateral velocity was underestimated. This condition was also found for other locations over the reservoir depth. Furthermore, the vertical velocity

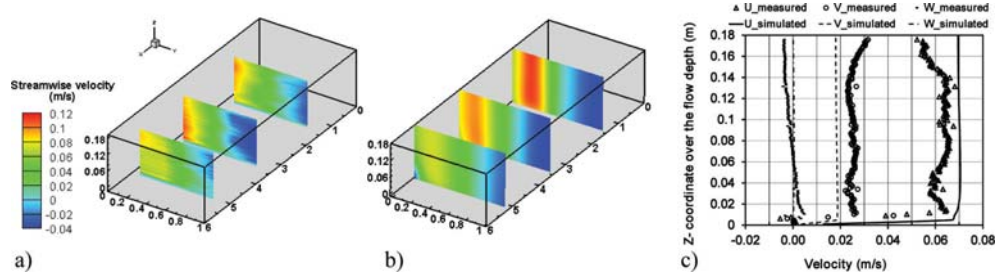


Figure 4. a) The UVP measurements of the longitudinal velocity over the flow depth at  $x = 1.5$  m,  $3.5$  m and  $5.2$  m; b) the corresponding simulated velocity; c) measured and simulated velocity profiles in three dimensions: longitudinal (U), lateral (V), Vertical (W) at  $x = 5.5$  m and  $y = 0.375$  m position.

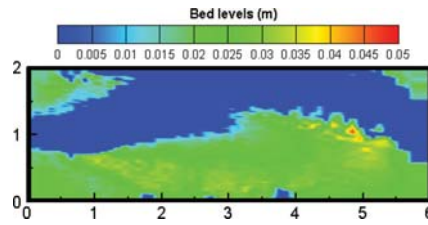


Figure 5. The final equilibrium deformed bed after flushing for case T8.

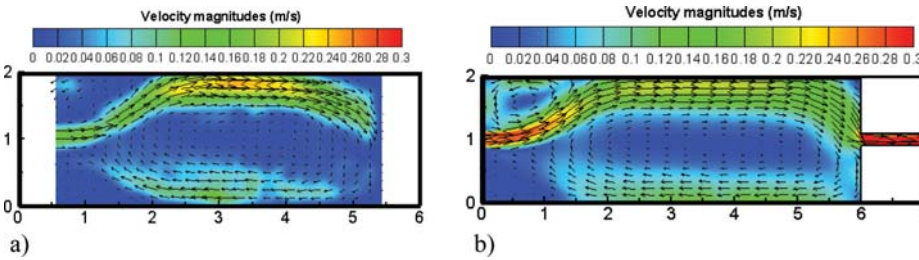


Figure 6. Surface velocity field with vectors after flushing for case T8; a) measured and b) simulated.

over the flow depth remains fixed in the numerical outputs whereas there was a slight change in the measurements. However, magnitudes of the vertical velocity were very small compare to the longitudinal and lateral velocities.

### 3.3 Flow field modeling on equilibrium deformed bed

The final bed morphology, which was obtained after the sediment flushing, was introduced to the model as the boundary condition and then three-dimensional flow field was calculated. Such kind of flow field simulation is more complex than flow field on fixed beds due to the shallower flow condition with higher velocity components on the existing friction of varying bed forms.

Figure 5 reveals the final deformed bed after sediment flushing in case T8. The figure shows that the flushing channel has shifted to the left side of the reservoir. Figure 6a and 6b also show the measured surface velocity after flushing by LSPIV technique and simulated one respectively. As can be clearly observed, the model reproduced the surface velocity pattern very similar to the observed one. Likewise the surface velocity pattern on fixed beds, the

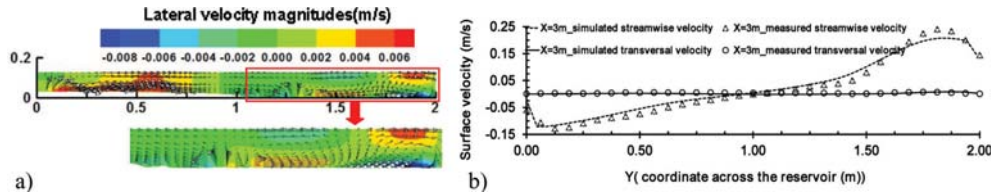


Figure 7. a) Lateral velocity distribution over the depth at  $x = 3$  m for T8 and b) comparison of surface velocity components from the LSPIV measurements and simulations.

reverse flow trajectory is longer, straighter and also the reattachment length is smaller than the observations. However, slight disturbance in the boundary condition was not considered in the model for the current case.

Figure 7a clearly illustrates the lateral flow velocity ( $V$ ) contours over the depth along with the secondary flow velocity vectors for case T8 at the middle cross-section. The streamwise and transversal simulated velocities were also plotted against the measured one in Figure 7b and good agreement was found.

#### 4 CONCLUSIONS

In the present study, numerical model SSIIM was utilized for reproducing the 3D velocity field in rectangular shallow reservoirs with different geometries on fixed and deformed bed as well. Measured surface velocity utilizing the LSPIV technique was used for model validation. In addition, 3D velocity components over the flow depth provided by UVP compared to the numerical results. The following outcomes have been obtained from the present work:

1. Many hydrodynamic aspects such as jet trajectory, recirculation zones, eddies and the flow distribution pattern, in different shallow reservoir geometries were represented by the numerical model. The numerical model also reproduced both symmetric and asymmetric flow pattern in symmetric geometry setup, similar to the observations, by introducing a perturbation in the inflow boundary. The numerical outcomes were in good agreement with the experimental observations. However, there was some discrepancy for reproducing the upstream vortex dimension due to the longer concentrated flow and reverse flow jet pattern with lower flow diffusion in the numerical outcomes.
2. The numerical model could successfully show the effect of geometry on the flow pattern. More specifically, the numerical model showed that the flow pattern in geometries with higher SF (T11 and T13) is insensitive to the small disturbance in the inflow condition and the numerical model converged to the steady symmetric flow pattern. On the contrary, calculated flow pattern in geometries with lower SF (T8 and T9) converged to the steady asymmetric flow pattern due to the slight disturbance in the inflow boundary condition.
3. From the practical point of view, 3D numerical models can be used for reproducing the symmetric and asymmetric flow pattern under the various hydraulic and geometric conditions. Consequently, it would be possible to model the flow and sedimentation pattern as well as the effects of diverse measures on the flow field for conducting the sedimentation in preferential zones. As to the reservoirs, the outcome can be the effective prediction and management of flow field and sediment flushing process during drawdown operation (i.e. Dashidaira reservoir in the Kurobe River, Japan). Therefore, application of 3D numerical modeling beside the experimental studies result in more efficient sediment management strategies in reservoirs. However, the coupled simulation of flow and sediment field interacting with the movable bed during the drawdown flushing would be a challenging work.



## REFERENCES

- Adamson, A. Stovin, V. & Bergdahl, L. 2003. Bed shear stress boundary condition for storage tank sedimentation. *Journal of Environmental Engineering, ASCE* 129(7): 651–658.
- Chiang, T.P. Sheu, T.W.H. & Wang, S.K. 2000. Side wall effects on the structure of laminar flow over plane symmetric sudden expansion. *Computers & Fluids* 29(5): 467–492.
- Chu, V.H. Wu, J.-H. & Khayat, R.E. 1991. Stability of transverse shear flows in shallow open channels. *Journal of Hydraulic Engineering, ASCE* 117(10): 1370–1388.
- Dewals, B.J. Kantoush, S.A. Erpicum, S. Pirotton M. & Schleiss, A.J. 2008. Experimental and numerical analysis of flow instabilities in rectangular shallow basins. *Environmental fluid mechanics* 8(1): 31–54.
- Dufresne, M. Dewals, B. Erpicum, S. Archambeau, P & Pirotton M. 2011. Numerical investigation of flow patterns in rectangular shallow reservoirs. *Engineering Application of Computational Fluid Mechanics* 5(2): 247–258.
- Frey, P. Champagne, J.Y. Morel, R. & Gay, B. 1993. Hydrodynamics fields and solid particle transport in a settling tank. *Journal of Hydraulic Research*, 31(6): 736–776.
- Ghidaoui, M.S. & Kolyshkin, A.A. 1999. Linear stability of lateral motions in compound open channels. *Journal of Hydraulic Engineering, ASCE* 125(8): 871–880.
- Kantoush, S.A. 2007. Symmetric or asymmetric flow patterns in shallow rectangular basins with sediment transport. JFK paper competition, In International Association of Hydraulic Engineering and Research (ed.), *32rd IAHR Congress: Harmonizing the Demands of Art and Nature in Hydraulics; Proc. intern. conf., Italy, 1–6 July 2007*. Venice.
- Kantoush, S.A. Bollaert, E. & Schleiss, A.J. 2008a. Experimental and numerical modelling of sedimentation in a rectangular shallow basin. *International Journal of Sediment Research*, 23(3): 212–232.
- Kantoush, S.A. De Cesare, G. Boillat, J.L. & Schleiss, A.J. 2008b. Flow field investigation in a rectangular shallow reservoir using UVP, LSPIV and numerical modelling. *Flow Measurement & Instrumentation*, 19: 139–144.
- Kantoush, S.A. Sumi, T. & Schleiss, A.J. 2010. Geometry effect on flow and sediment deposition pattern in shallow basins. *Annual Journal of Hydraulic Engineering, JSCE* 54: 212–232.
- Lauder, B.E. & Spalding, D.B. 1972. Lectures in mathematical models of turbulence. London: Academic press.
- Mizushima, J. & Shiotani, Y. 2001. Transitions & instabilities of flow in a symmetric channel with a suddenly expanded and contracted part. *Journal of Fluid Mechanics* 434: 355–369.
- Olsen, N.R.B. 2013. *A three dimensional numerical model for simulation of sediment movement in water intakes with multiblock option*. Department of Hydraulic and Environmental Engineering, The Norwegian University of Science and Technology, Trondheim.
- Patankar, S.V. 1980. Numerical heat transfer and fluid flow. New York: McGraw-Hill.
- Shapira, M. Degani, D. & Weihs, D. 1990. Stability and existence of multiple solutions for viscous flow in suddenly enlarged channels. *Computers & Fluids* 18(3): 239–258.
- Stovin, V.R. & Saul, A.J. 1996. Efficiency prediction for storage chambers using computational fluid mechanics. *Water Sciences & Technology* 33(9): 163–170.
- Van Rijn, L.C. 1984a. Sediment transport. Part I: Bed load Transport. *Journal of Hydraulic Engineering, ASCE* 110(10): 1733–1754.
- Van Rijn, L.C. 1984b. Sediment transport. Part II: Suspended load Transport. *Journal of Hydraulic Engineering, ASCE* 110(11): 1431–1456.
- Yuce, M.I. & Chen, D. 2003. An experimental investigation of pollutant mixing and trapping in shallow coastal re-circulating flows. In Uijttewaal, W.S.J. & Gerhard, H. J (ed.), *Shallow flows; Proc. intern. symp., Netherlands, 16–18 June 2003*. Delft: Balkema.