

LIGHTHOUSE

PROJECT

ALICE PAMPHLET N°2

HOUSE PROJECT

800

ALICE PAMPHLET

2

LIGHTHOUSE PROJECT

LIGHT- HOUSE



ALICE

**lighthouse
project**

london / 2008

EPFL / ENAC / IA / ALICE

atelier de la conception de l'espace

spring semester 2008

dieter dietz, olivier otteavere, daniel pokora, isabella pasqualini, katia ritz, marc schmit



contents

the lighthouse project	9
dawn	11
matrix	23
l'heure bleu	29
twilight	35
team	46
acknowledgments	47

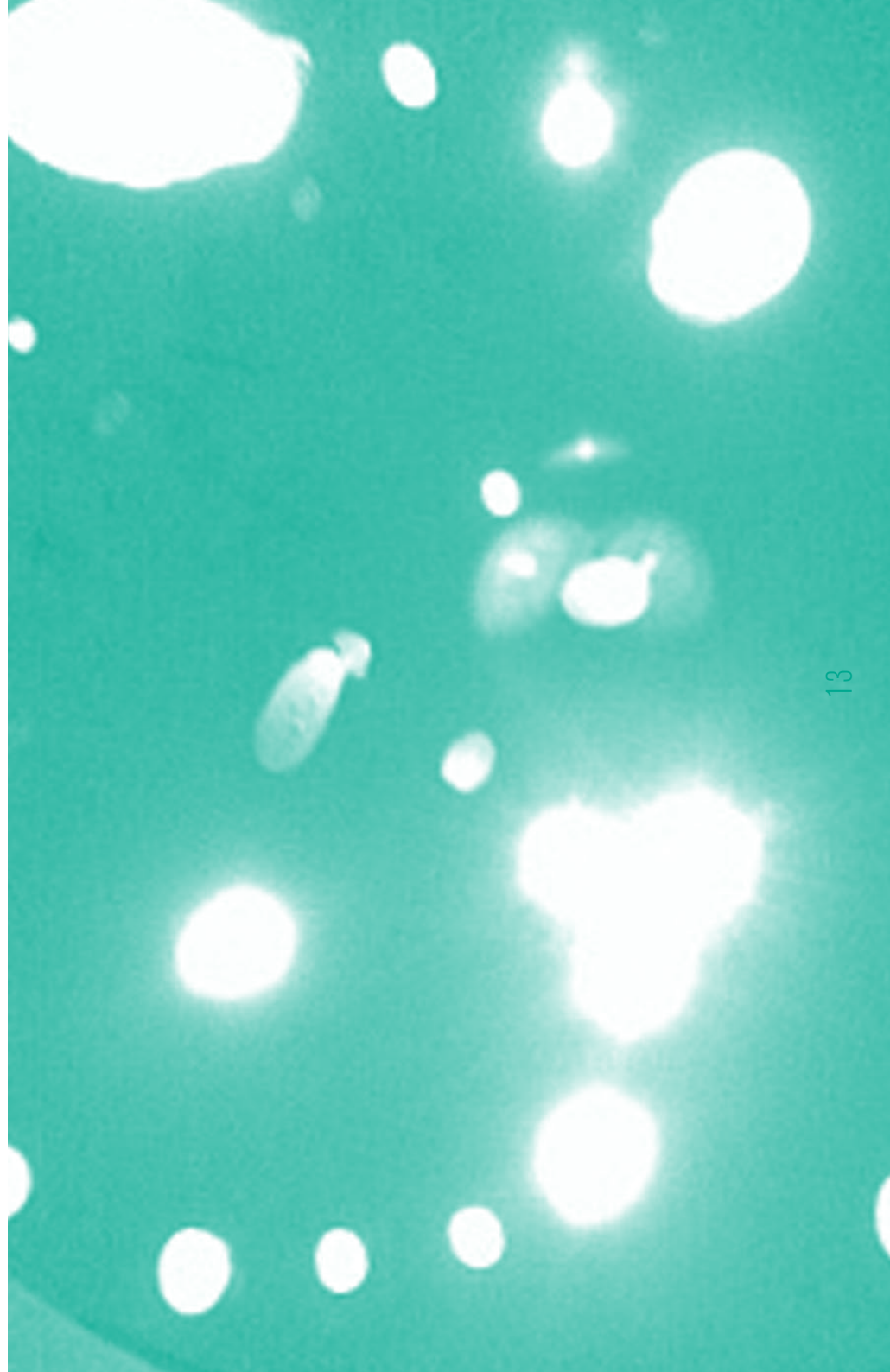
The Lighthouse Project proposes a house. Named a House it had to address inhabitation: for whom was defined by each student.

Additionally the Lighthouse had to include a public function. Light was considered as an attractor and conductor of flows in the urban context and in relation with the activity of living. The public program acted as a pivotal part of the project, being the connecting part between city and habitation. The focus was set on the transitional aspects and spatial conditions between public and private and their changing appearances during different light conditions in time.

The semester was structured along a time axis. The 12 weeks of the semester were considered being a 24 hours cycle that evolves 2 hours per week. Thus the projects were traveling through a 24-hour journey from dawn to dawn.

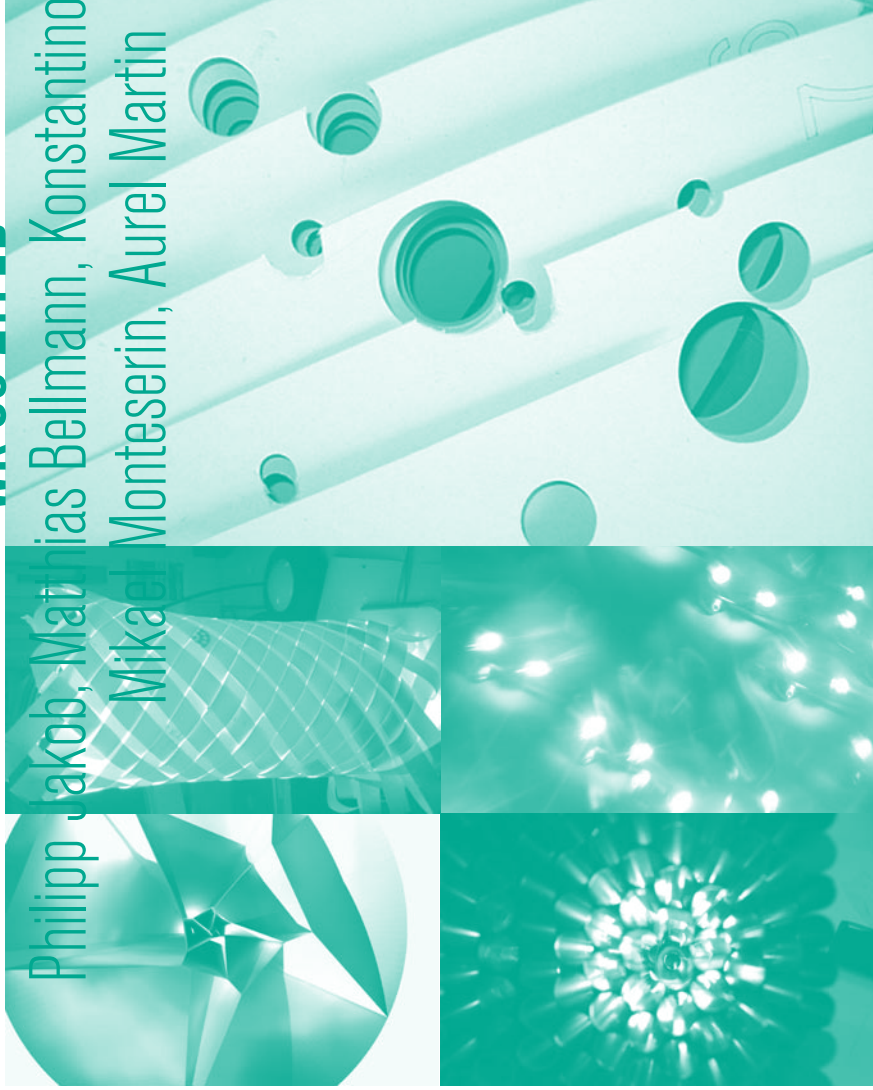
In the first week, the studio prepared in groups of 2 a Light performance.

The reference structure for this project was a matrix consisting of 12 cones having one common center. The outer shape of the matrix was a polyhedron with 12 faces. Every group was working on one of these cones, each one differing in orientation and inclination.



WK 08 21FEB

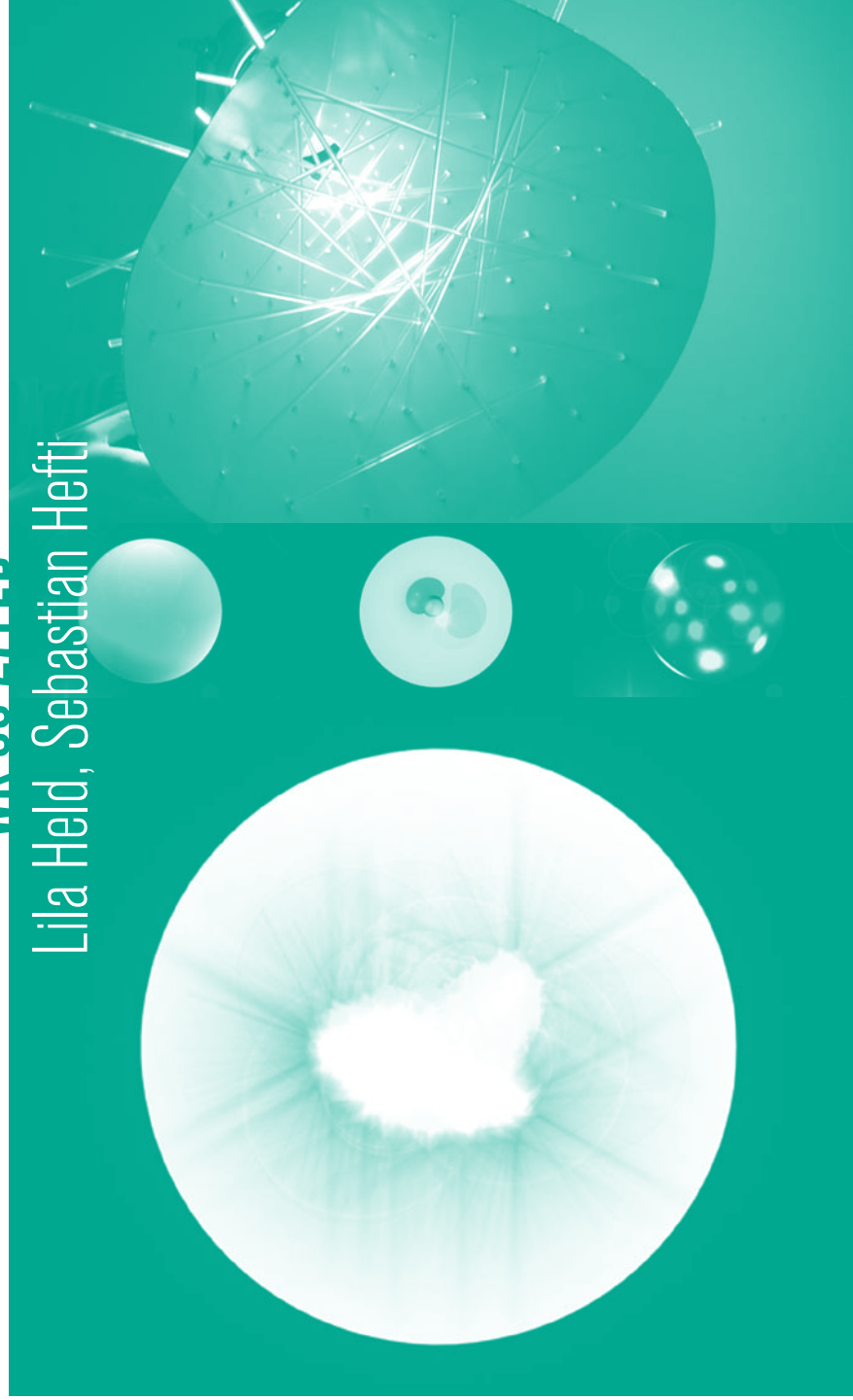
Philipp Jakob, Matthias Bellmann, Konstantinos Dell'Olivio
Mikael Monteserin, Aurel Martin



14

WK 09 27FEB

Lila Held, Sebastian Hefti



15

WK 10 06MAR

Nicolas de Courten, Patrick Meier, Thaddée Lucan, Augusta Porok

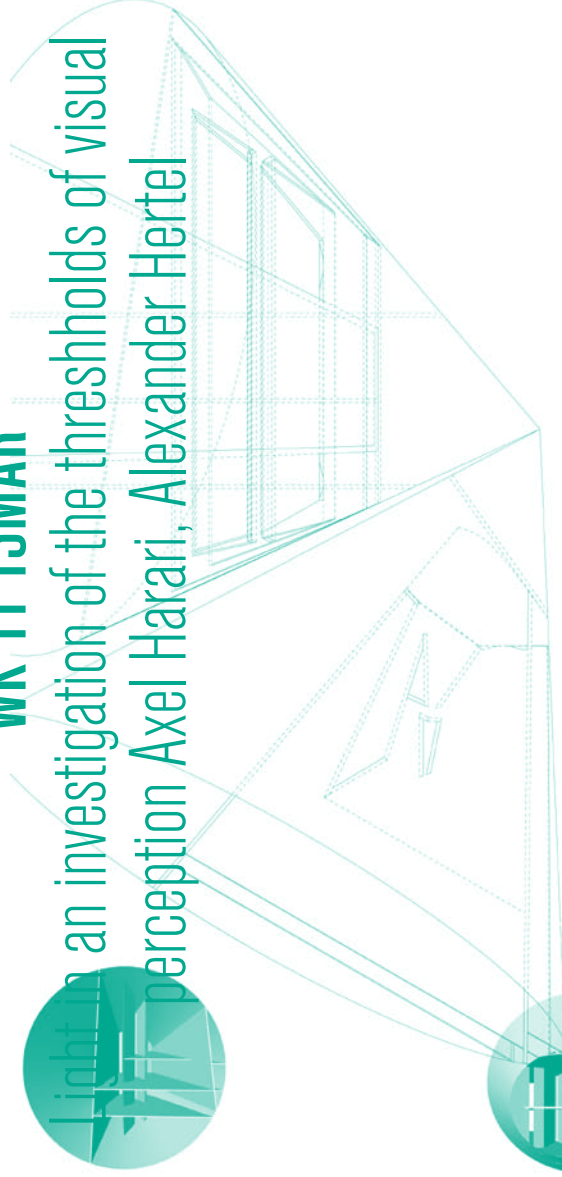


16

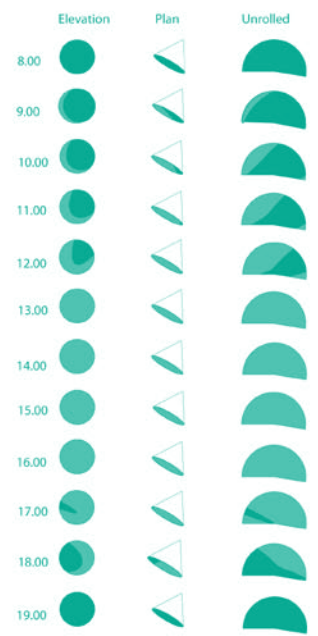
WK 11 13MAR

Light in an investigation of the thresholds of visual perception Axel Harari, Alexander Hertel

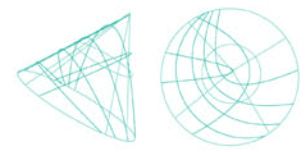
Light Performance-week5-A. Harari and A. Hertel-HAHA



Light mapping - 26.05.08



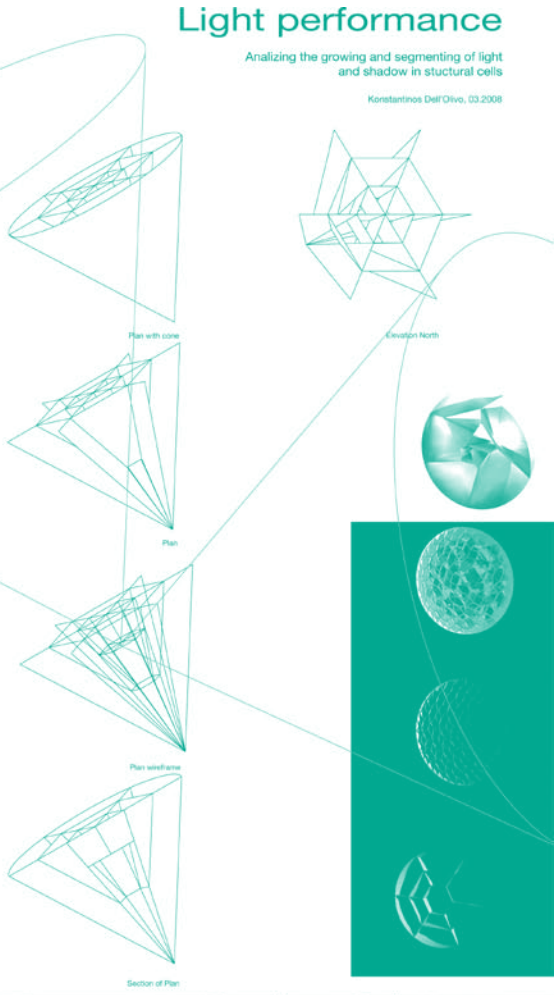
Wireframe mapping in cone



17

WK 12 29MAR

of growing and segmentation of light and shadow in structural cells, Konstantinos Dell'Olivo



Light performance

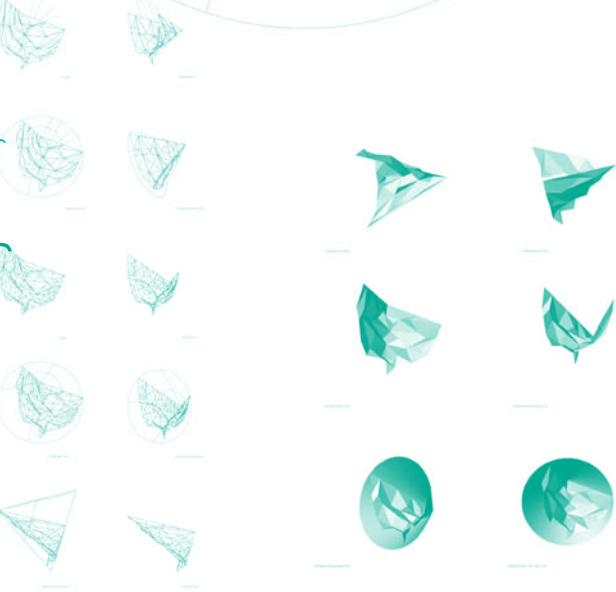
Analyzing the growing and segmenting of light and shadow in structural cells

Konstantinos Dell'Olivo, 03.2008

18

WK 13 26MAR

In this project the joints of a triangulated structure are replaced through glaring light, thus reversing the expected relation of structure and joint., Thaddée Lucan, Augusta Porok



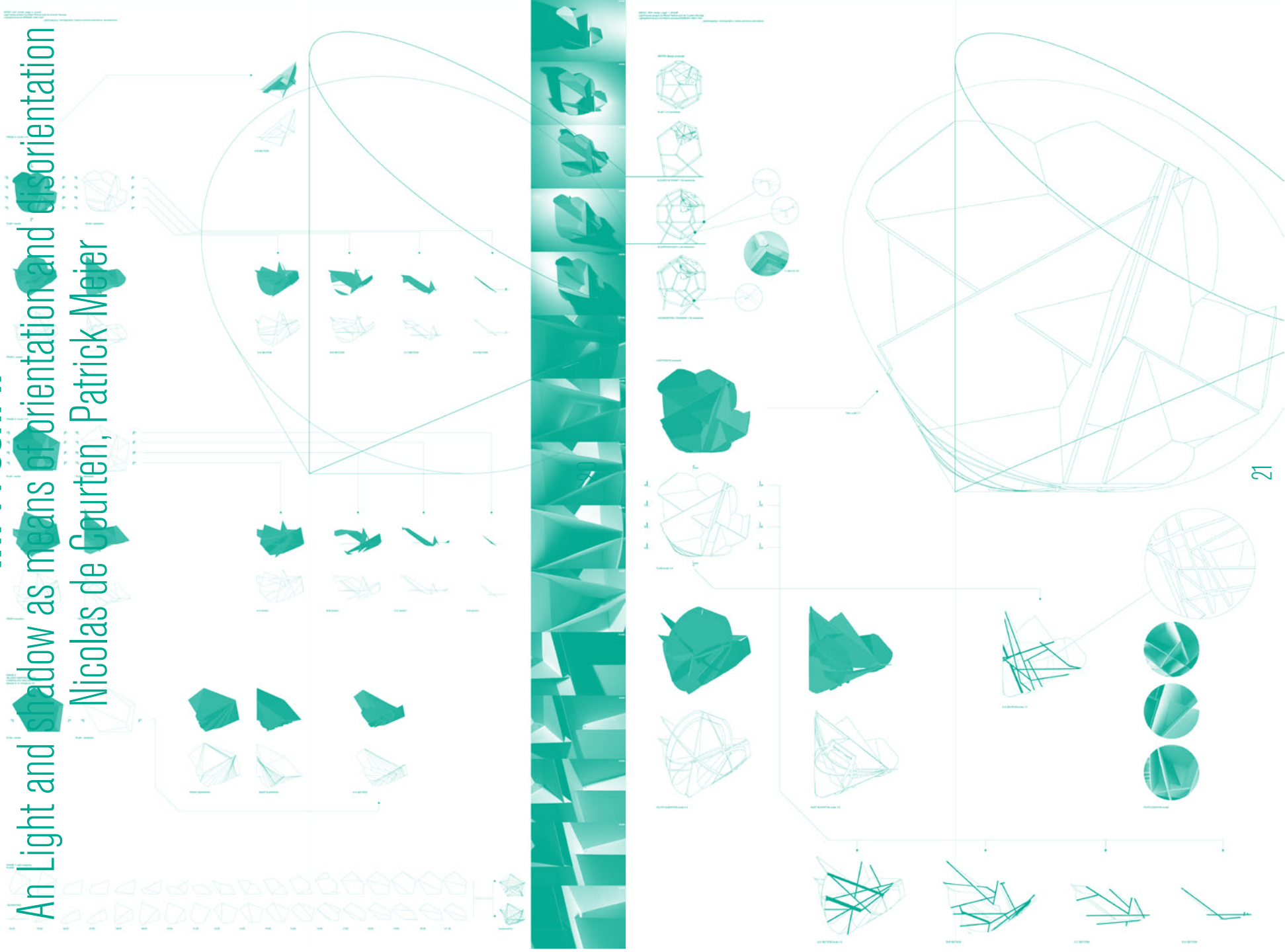
light space
thaddée lucan augusta porok

19

WK 14 03APR

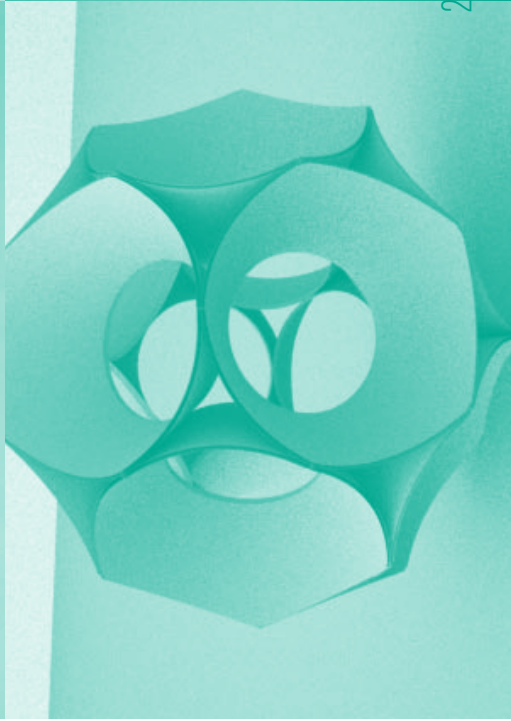
An Light and shadow as means of orientation and disorientation

Nicolas de Courten, Patrick Mejer



Nicolas de Courten, Patrick Meier, Hefti Sebastian,

Alexander Hertel



22



matrix

With the concept of Light performance each group also proposed a structure for the construction of the matrix. In the course of the first phase, one proposal was selected and built by the whole class. The individual projects were a negotiation between the group's concept of light as manifested in their physical construct and the matrix as a group setting.

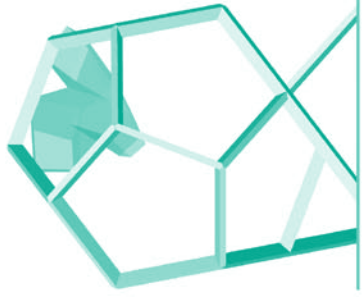
23

WK 15 10APR

000110_02A_4448_01A4_1_10_02000701EN NICOLAAS & NIJHUIS PATENTCOÖP.



PLAN 1/10 RENDER

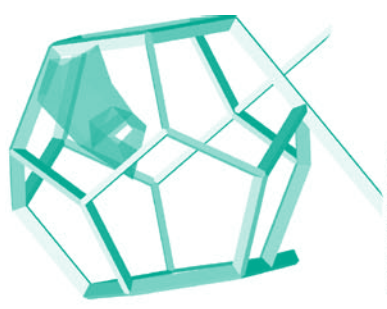


FRONT 1/10 RENDER

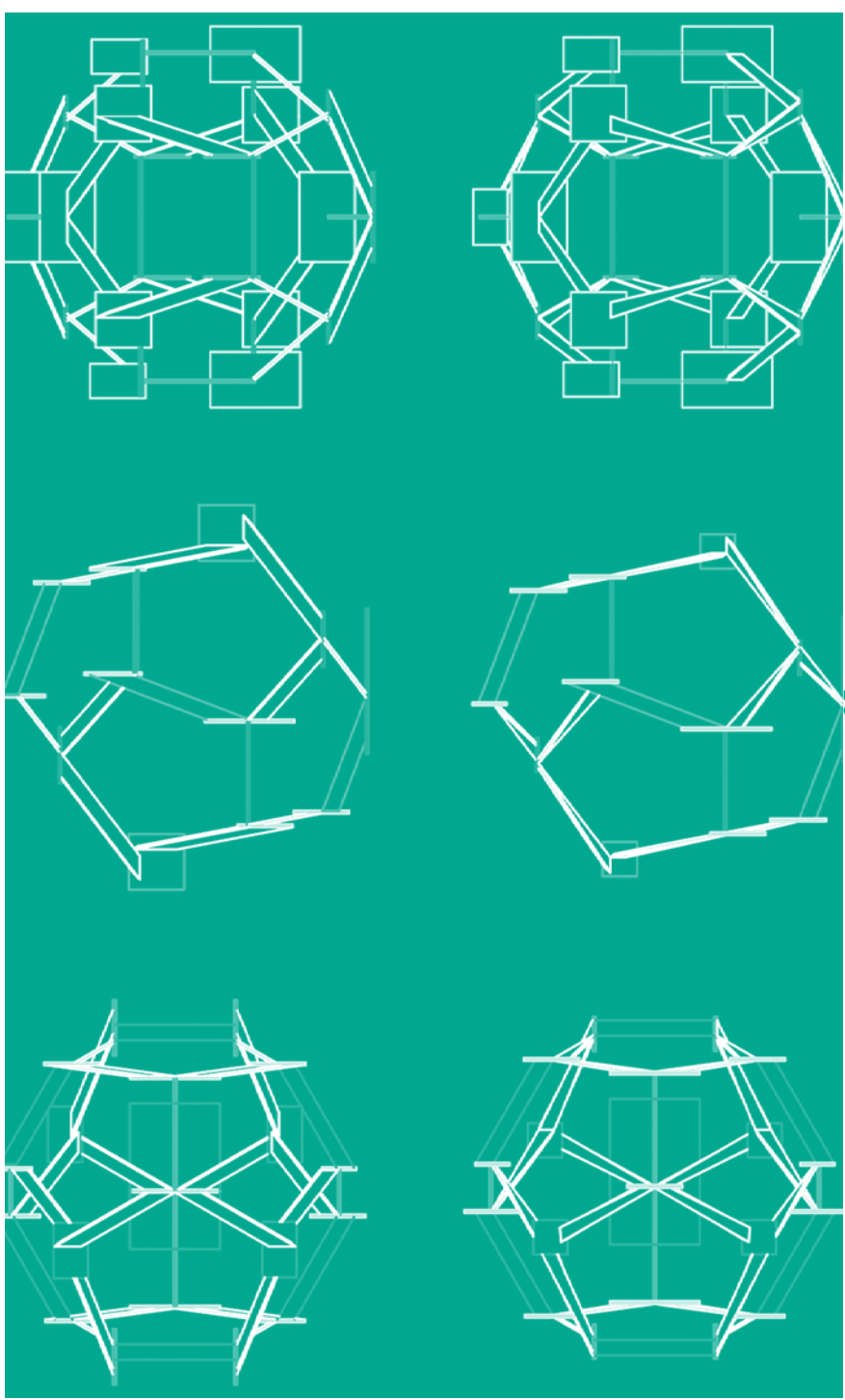


RIGHT 1/10 RENDER

24



ASYMMETRIC DRAWING 1/10 RENDER



25

WK 16 17APR

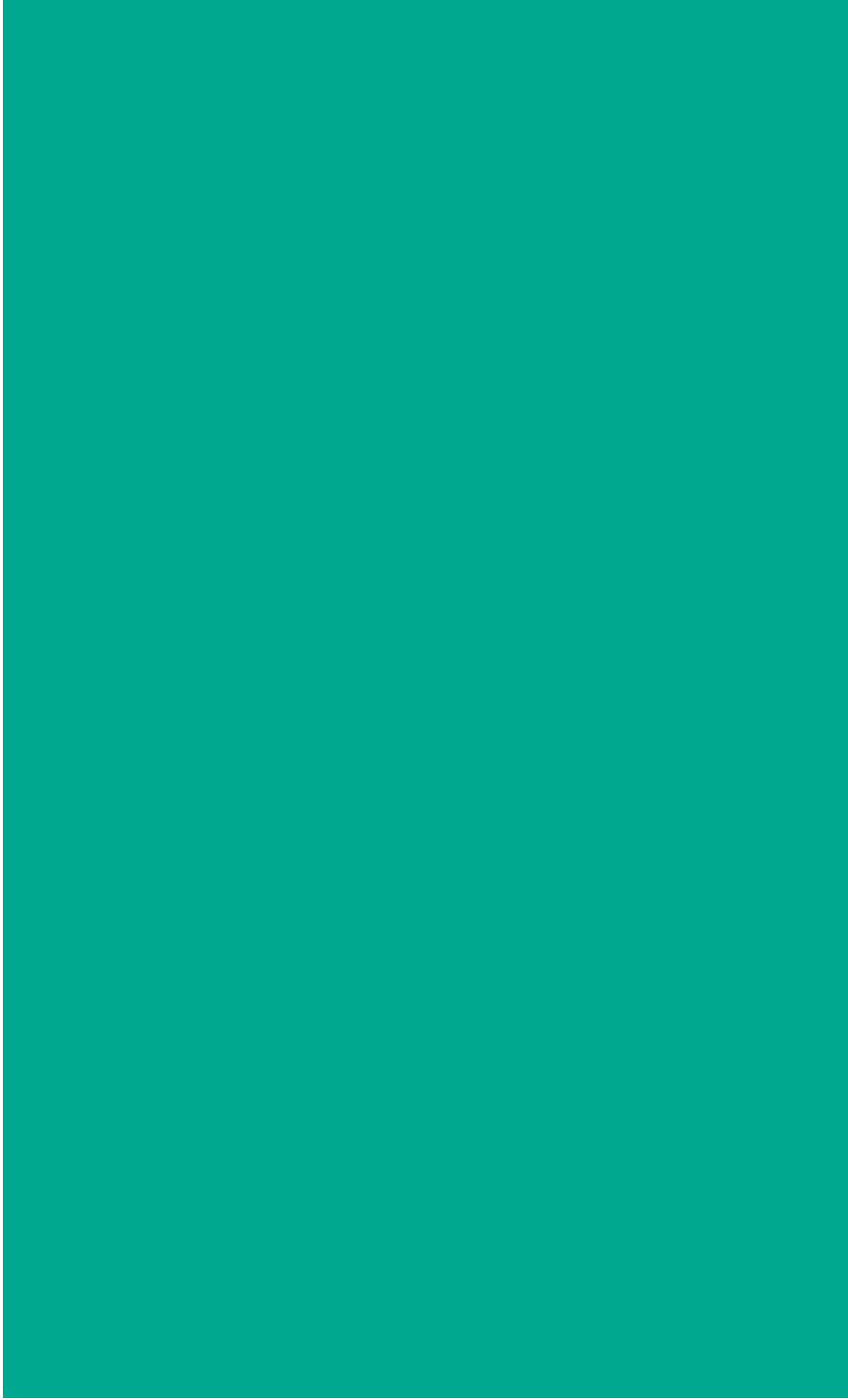
1:1 construction of the Matrix



26



27

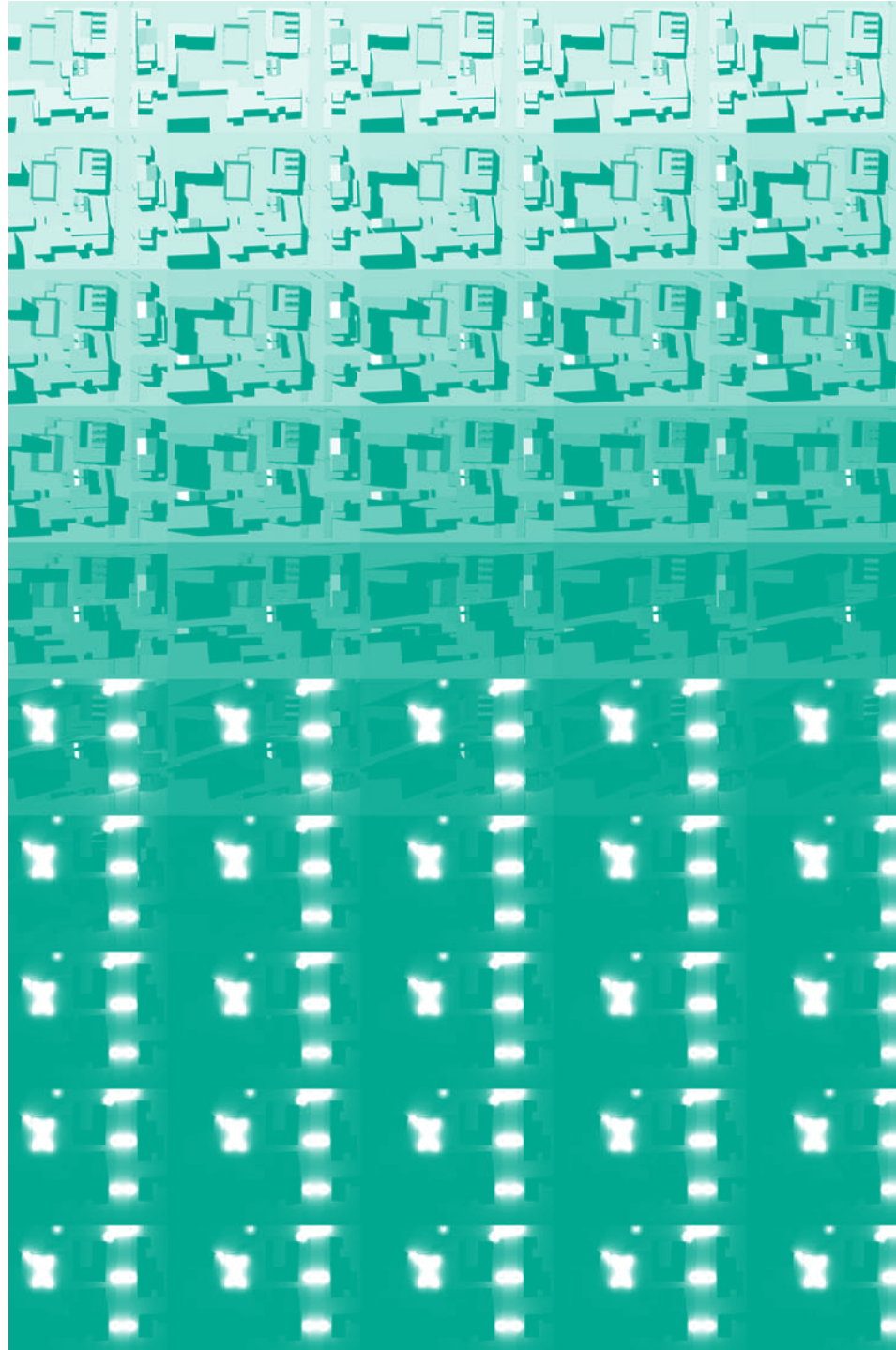


28

l'heure bleue

In a second phase the studio reconsidered the light performance and its respective aspects of light and performance by mapping the light.

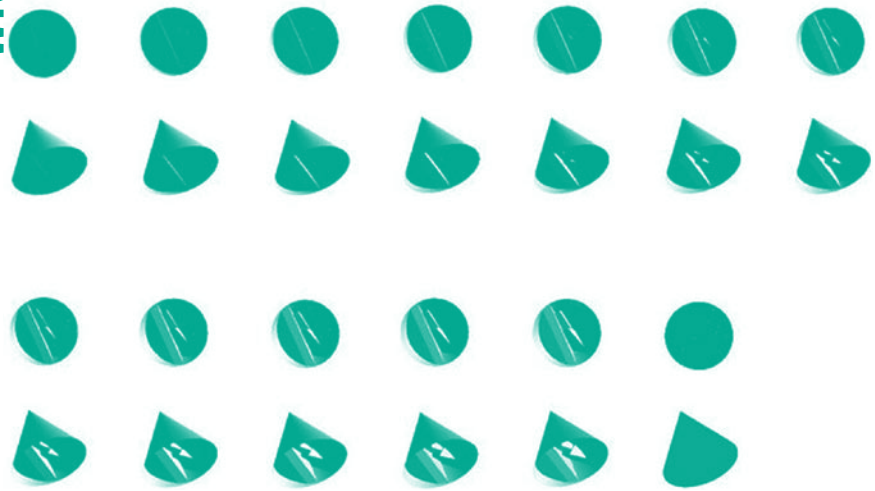
29



WK 17 24APR



Lightmapping : 17h12 - 19h48
north view & facing the cone
Venice on 21st June 2008




32

WK 18 30APR



33



In a third phase a specific site in London was chosen by the students and a design proposal for the Lighthouse Project was developed.

The notions of light-space elaborated until then enabled to concentrate on neuralgic spots within the urban context regarding their light identity.



Shorditch exhibition center: A project investigating
on light, orientation an depth. Lila Held



Lighthouse
atelier
alice
lila held
080430

a forest
Shorditch exhibition center
Shorditch exhibition center is a light forest
of orientation and depth.

private and public interaction
thought, form and opening



in nature and city

Indirect light is coming from the sky and change the perception of the exhibition space. The architect has direct roof, ceiling / for the

The opening between the two exhibition spaces is a horizontal line, from the new section, it is not the same as the old section, the architect because part

The opening between the concept, that light change space, but the low sky in particular, to find back our

elevation and plan 1/23



sections 1/23



interior space

interior



light changing volume

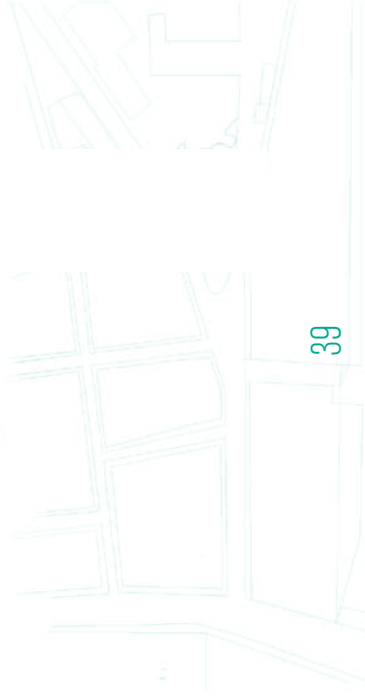


private exhibition exhibition section



curves in space

longitudinale section 1/23

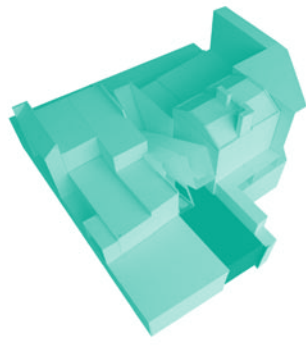


curves in space
metal curves on hold in space by a system of
pieces on ceiling

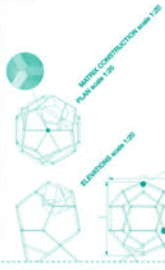


WK 20 15MAI

House for Mister T: A house arranged around a 24 hours cycle on June 21st experienced by the inhabitant Mister T. During the remaining 364 days the house is rented. Nicolas de Courten



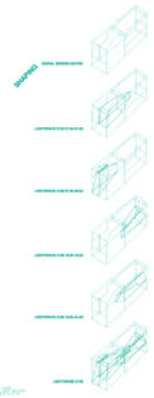
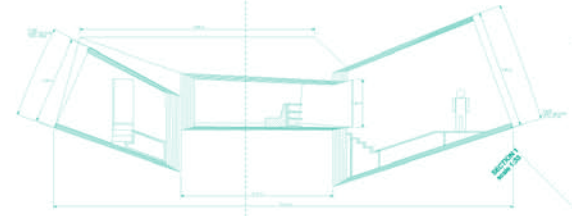
00028_LAY_superfinal_render_A4.pdf
 ALICE Jander Davis
 Nicolas de Courten
 LH2106



LH2106
 INTRODUCTION MANUAL

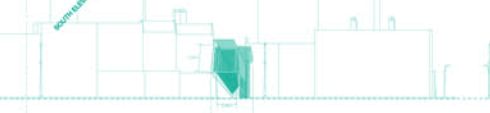
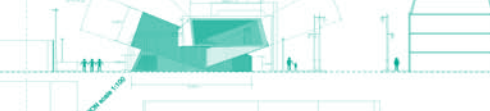
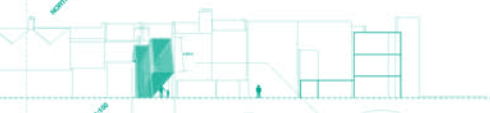
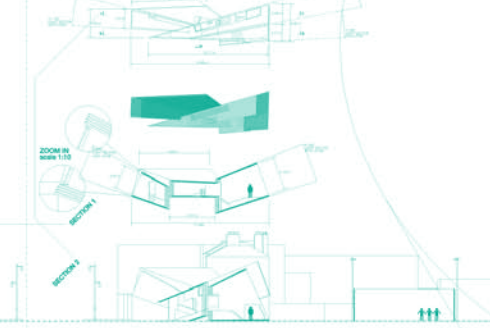
CONTENTS

01. INTRODUCTION
 02. THE PROJECT
 03. THE ARCHITECTURE
 04. THE INTERIOR
 05. THE EXTERIOR
 06. THE LANDSCAPE
 07. THE CONSTRUCTION
 08. THE MATERIALS
 09. THE FINISHES
 10. THE FURNITURE
 11. THE LIGHTING
 12. THE PLANTS
 13. THE ACCESSORIES
 14. THE MAINTENANCE
 15. THE SCHEDULE

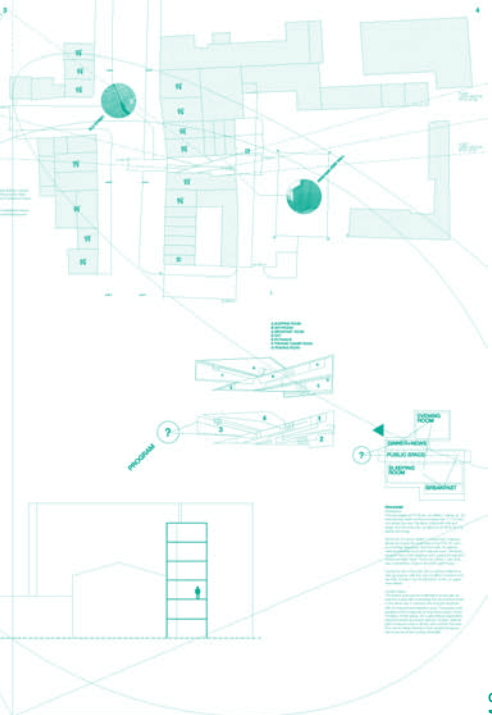


42

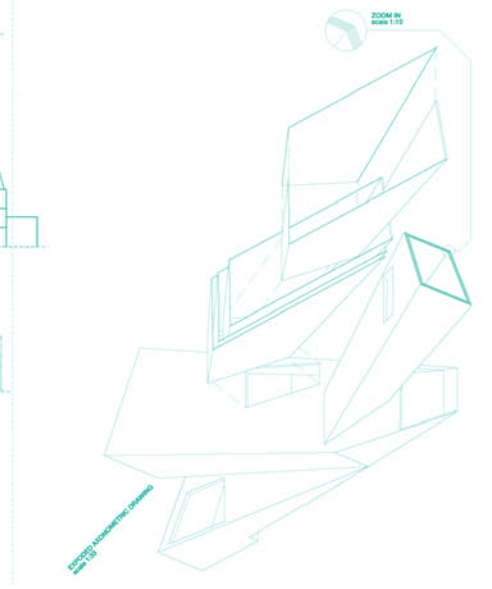
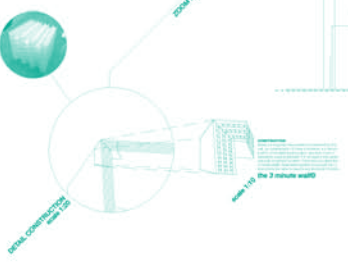
00028_LAY_superfinal_render_A4.pdf
 ALICE Jander Davis
 Nicolas de Courten
 LH2106



00028_LAY_superfinal_render_A4.pdf
 ALICE Jander Davis
 Nicolas de Courten
 LH2106



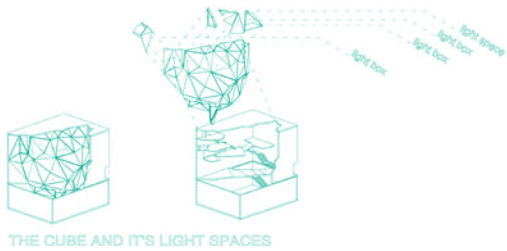
43



WK 22 28MAI

Lighthouse: A project for a night-club, a child-care and an inhabitation merged into one structure. A reinterpretation of the lighthouse as an urban place of social encounters.

haddée Lucan, Augusta Porok



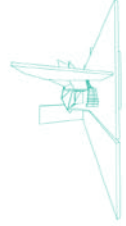
THE CUBE AND ITS LIGHT SPACES

PERSPECTIVES

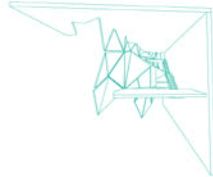
view of the entrance



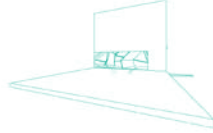
approaching the first floor



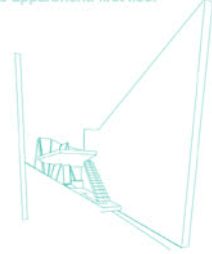
children's playground



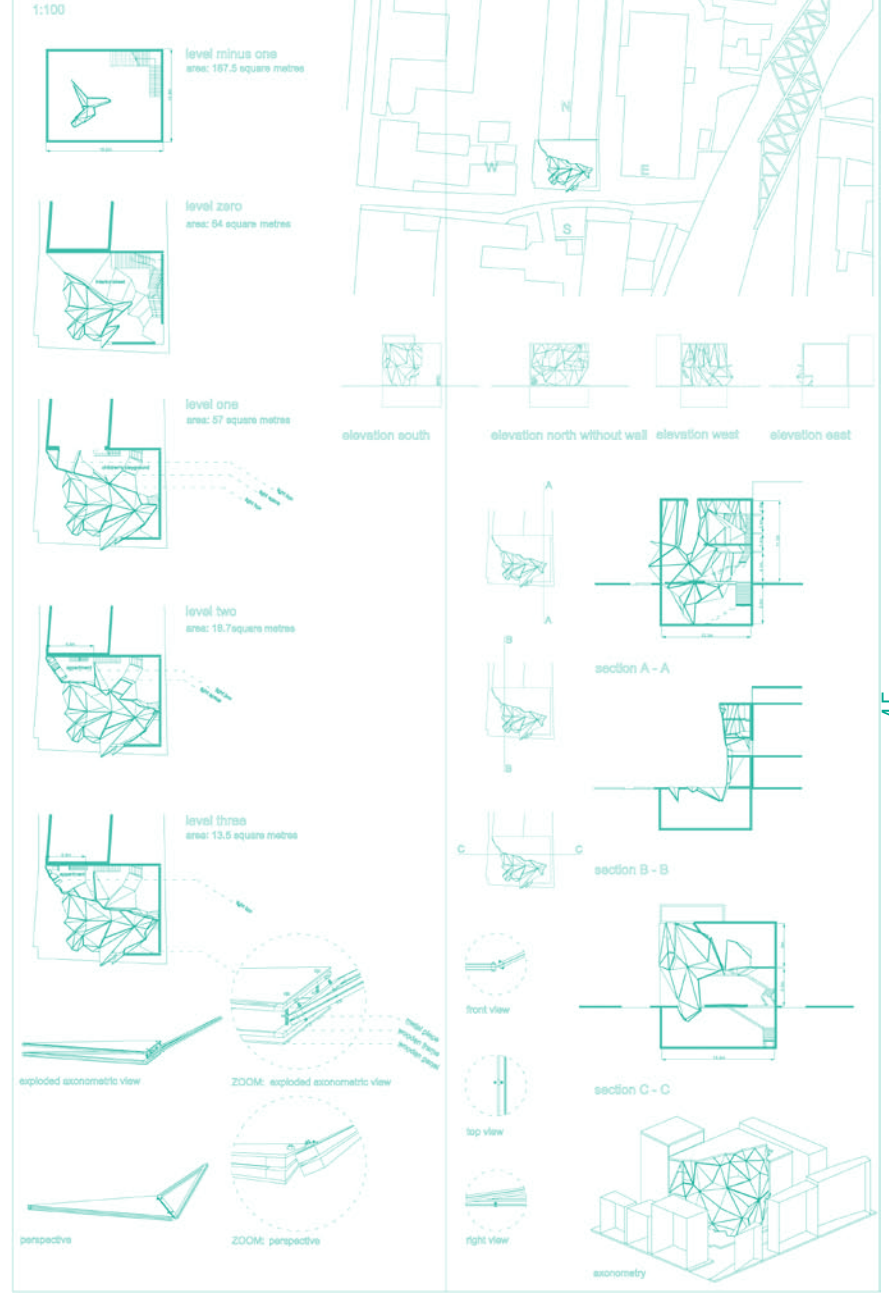
view from inside the school



the apartment: first floor



44



45

alice students 2007/ 2008

Adrien Alberti, Monica Rita Basbouss Moukarzel, Dorette Baumann, Matthias Bellmann, Fatma Ben Amor, Malaïca Cimenti, Esteban Coto Chavarria, Konstantinos Dell'Olivo, Nicolas de Courten, Nathalie Egli, Clio Gachoud, Ann-Madlen Gfeller, Andreas Gubler, Axel Harari, Steffan Heath, Sebastian Hefti, Lila Held, Alexander Hertel, Loïc Jacot-Guillarmod, Philipp Jakob, Aurélie Krotoff, Thaddée Lucan, Aurel Martin, Patrick Meier, Auguste Michaud, Mikael Monteserin, Minh-Luc Pham, Edouard Philippe, Augusta Prorok, Bertrand Sauterel, Christopher Tan, Sandro Tonietti, Andrés Tovar Nuez

alice team

Dieter Dietz, Eveline Galatis, Olivier Otteavere, Daniel Pokora, Isabella Pasqualini, Katia Ritz, Marc Schmit

booklet, concept and design

Jonas Voegeli, Aline Dubach, Caroline Pachoud (Colour Concept)

46

many thanks to

Marc Parlange, Doyen ENAC EPFL; Giorgio Margaritondo, Vice President EPFL; Nicolas Henchoz, Director EPFL+ECAL lab; Ines Lumunière, Director SAR, EPFL; Bruno Marchand, Director IA, EPFL; Luca Ortelli, Former Director, SAR EPFL; Eveline Galatis, ALICE lab EPFL; Anne Markey, London Met University, NASF coordinator; Robert Mull, Director DASD London Met University; Pippa Gueterbock, Associate Director EDAW; Sarah Ichioka, Director The Architecture Foundation; Donald Hyslop, Director's Office, Tate Modern; Alistair Huggett, Southwark Council; David Kohn, Architect, Tutor London Met; Wes Rozen, Architect SITU, New York

for their wide spread support and inspiring discussions.

acknowledgments

47

**http://
alice.epfl.ch**