

ALPINE

ALICE PAMPHLET — N°6

MOTEL

ALPINE MOTEL

600

ALICE PAMPHLET

N°6

ALPINE MOTEL

ALPINE MOTEL



ALICE

alpine motel

swiss mountain passes / 2009

EPFL / ENAC / IA / ALICE

atelier de la conception de l'espace

spring semester 2009

dieter dietz, aline dubach, eveline galatis, olivier ottevaere, daniel pokora, isabella pasqualini,
katia ritz



contents

alpine motel	8
mountain passes	10
sweep	12
entrée alpine	20
pan	28
fabricate	35
team	46
acknowledgments	47

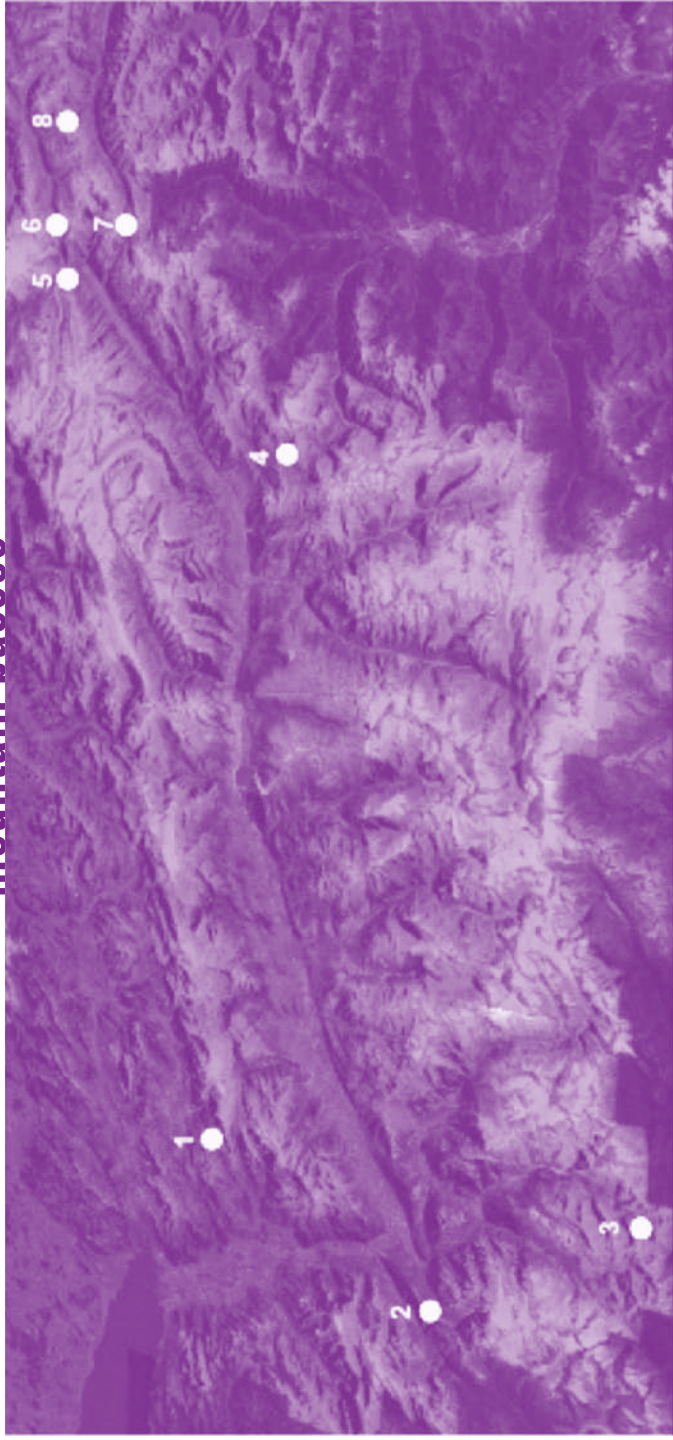
The second semester of the academic year 2008 /2009 was a continuation of our investigations on altitude.

We developed a project in a mountainous, alpine condition in several resolutions at different scales. First, a series of mountain passes were looked at and transformed into panoramic site models. Subsequently the program of Entrée Alpine has been introduced as a first step towards a project proposal: the design of an Alpine Motel.

After the Entrée Alpine phase 16 proposals have been evaluated in a jury with external experts in a public review. Several proposals served as the basis for a 'one to one' structure to be erected in Zermatt at an altitude of 2536 m as a part of the Zermatt-Festival. At the same time the Entrée Alpine venture informed the projects of the Alpine Motel : A close relationship between the Entrée project and design projects for the motels were maintained throughout the semester.

One of the key ideas underlying the ALICE design approach is the constant discourse between the conceptual framework of an architectural idea and its translation into an actual project. This means on the one hand the conception of the architectural project, and on the other, the development of a coherent program according to this architectural idea (this of course also vice versa). For example: How can the specific panoramic condition at a given mountain pass transform or interpret the known typology of a motel into a unique spatial experience while at the same time offering the function of an alpine motel?

mountain passes



10

1 Croix pass	1776 m	Diablerets to Bex	passable 05-11
2 Forclaz pass	1527 m	le Châtelard to Martigny	-
3 Grand-St-Bernard pass	2469 m	Martigny to Aosta	passable 05-10
4 Simplon pass	2005 m	Brig to Domodossola	passable 01-12
5 Grimsel pass	2165 m	Innertkirche to Oberwald	passable 05-10
6 Furka pass	2429 m	Andermatt to Oberwald	passable 05-10
7 Nufenen pass	2478 m	Ulrichen to Airolo	passable 06-10
8 San Gottardo pass	2106 m	Airolo to Wassen	passable 05-11

11

In the first week, the studio prepared in groups of 2 students a panoramic site, i.e. a model which brings to evidence the specific location and condition found at a given mountain pass.

The model described the panoramic condition encountered, as well as addressed an idea of ground and/or topography.

As the given mountain passes are not accessible in winter time, Google Earth in 3d mode was used to construct:

A) a digital model addressing the panoramic condition

B) a physical model translating panorama and an idea of ground and/or topography into physical form

The material for the physical model was 1mm aviation plywood.



14

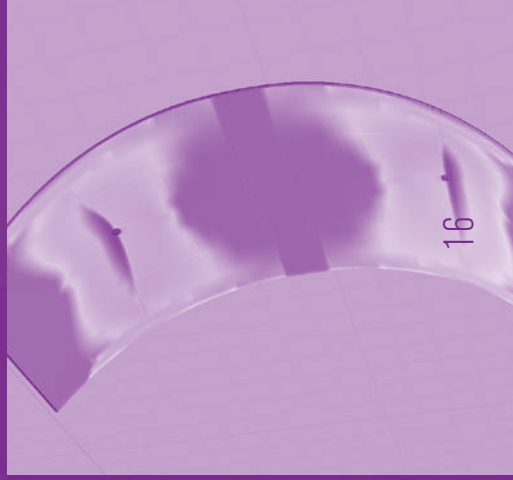
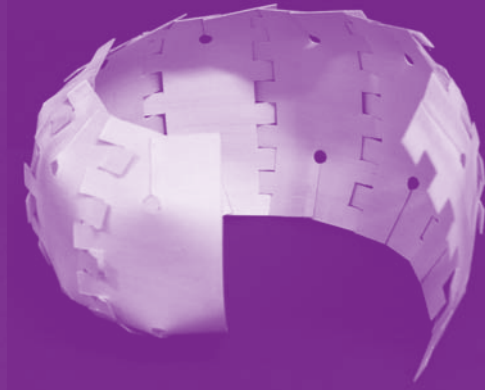
15

Cementit
Weiss



WK 09 25FEB

Panoramic Site: Furka Pass, Gabriela Schär, Korab Ramadani
Panoramic Site: Grand-St. Bernard Pass, Nicolas Feihl,
François Nantermod



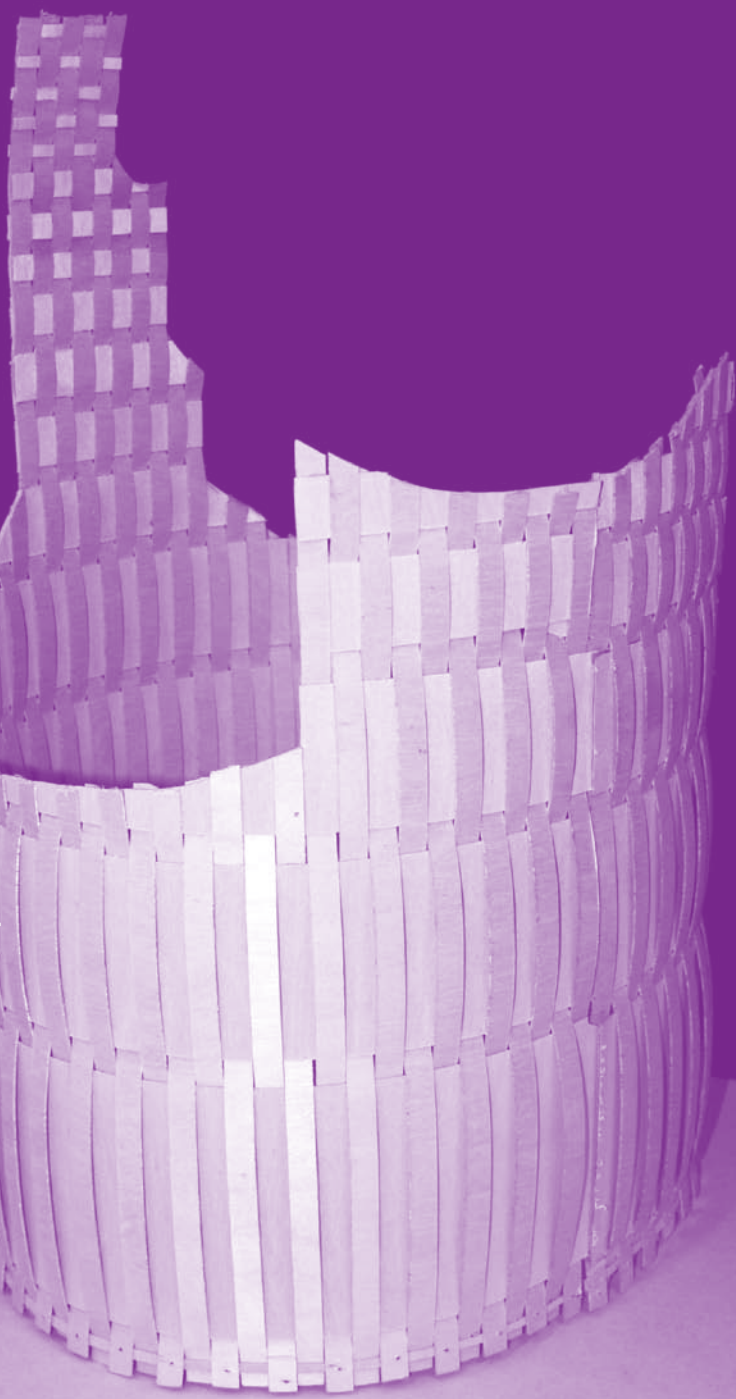
WK 10 04MAR

Panoramic Site: San Gottardo Pass, Ahmed Belkhodja, Adrian
Llewelyn Meredith, Panoramic Site: Croix Pass,
Julien Prudhomme, Carole Westhoff



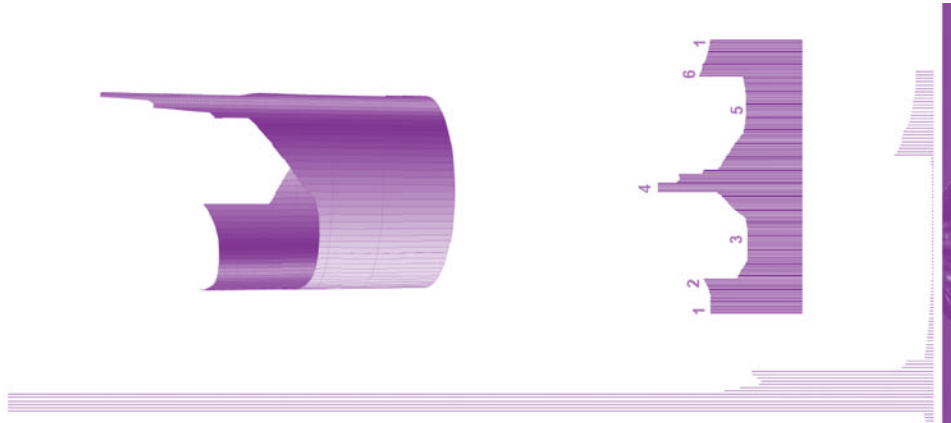
WK 12 18 MAR

Towards an Entrée Alpine: Forclaz Pass, Eveline Job, Lukas Manz



ALICE // ALTITUDE
THE FORCLAZ PASS
VISIBLE DEPTH

PHOTOGRAPHY: EVELINE JOB



In weeks 2 to 5 we developed a project for an Entrée Alpine. It was located at a chosen site along the road of each mountain pass. In parallel the work on the panoramic site model continued. The two models formed complementary parts of the project and informed one another.

Entrée Alpine was invented as a place of introduction or initiation to a view of the natural environment. Entrée was considered a space of transition. For example: a) the transition of a state of driving towards a state of temporal residing, b) a transition from a moving position of the observer in the car to the movement of the body, c) the transition from the time of the journey towards the

confrontation with geological time, or d) the transition from the containment of the concavity of the valley towards the convexity of the alpine panorama and the double curvature of the geoid, etc...

ALICE - ALTITUDE
ENTREE ALPINE

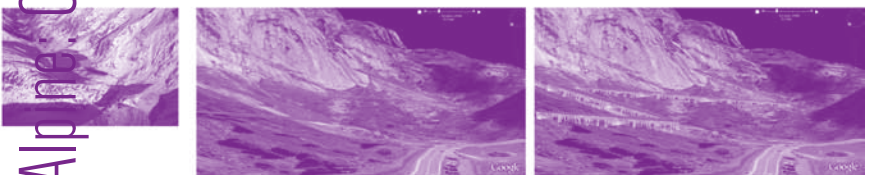
Entrée Alpine, Croix Pass, Main Lepoutre, Hadrien Tricaud

Site plan 1 : 50 000

lakes and rivers
borders of vegetation
lowlands



Plan 1 : 25 000
Establishment of the "bisse"



Bisse during summer

Bisse during winter



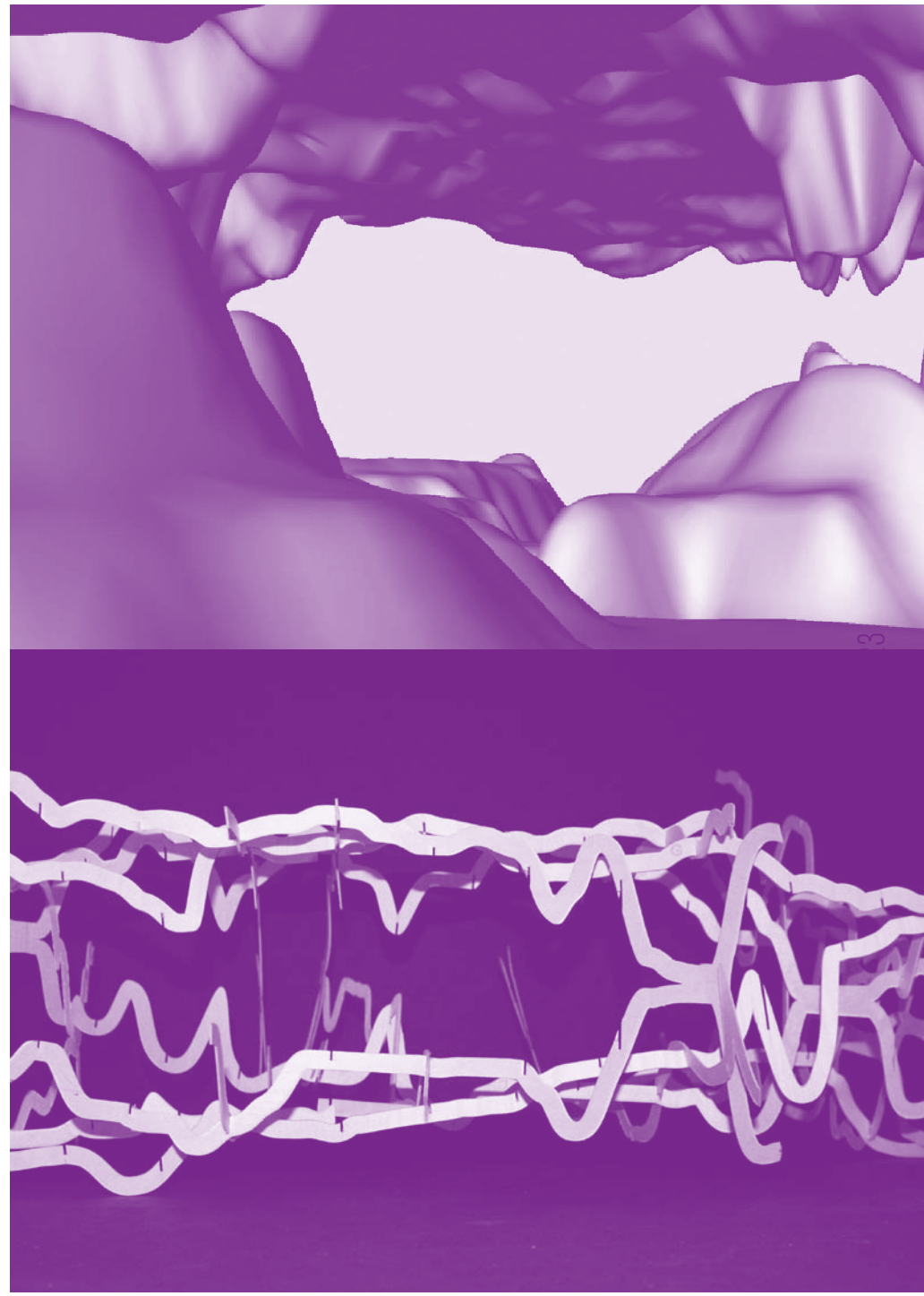
Plan 1 : 50 000
Connection of water

Entrance/Exit
Convergence
Spread
Intersection road/river
Sources
Connection



Cut through the "bisse" 1 : 10 000

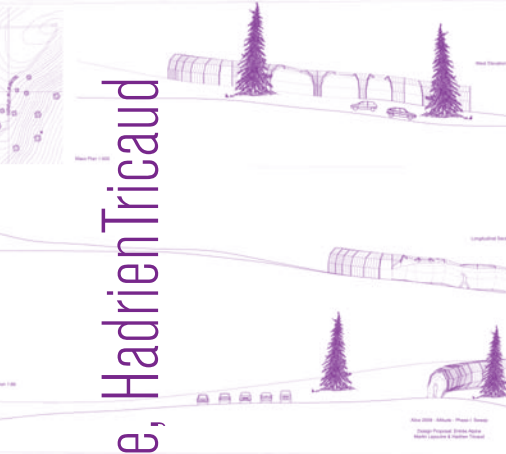
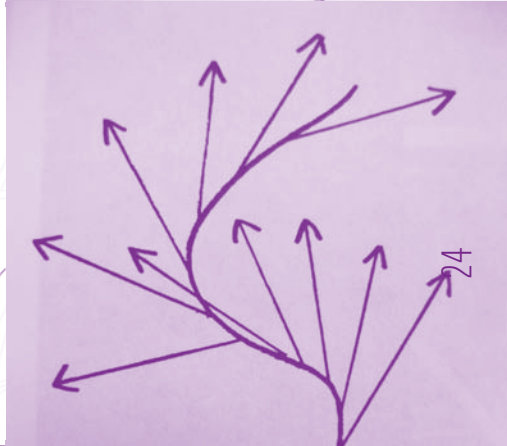
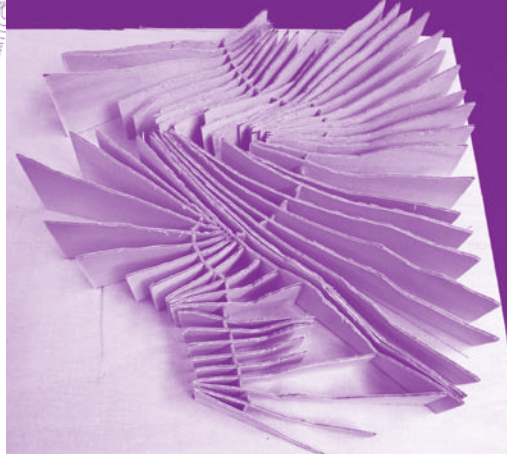
road
marshy area



WK14 01APR

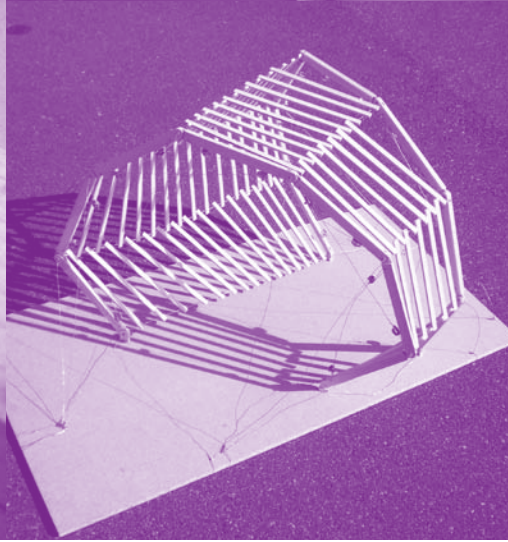
Entrée Alpine: Simplon Pass, Alexandria Ming Aerni,

Augustin Clement



WK 15 08APR

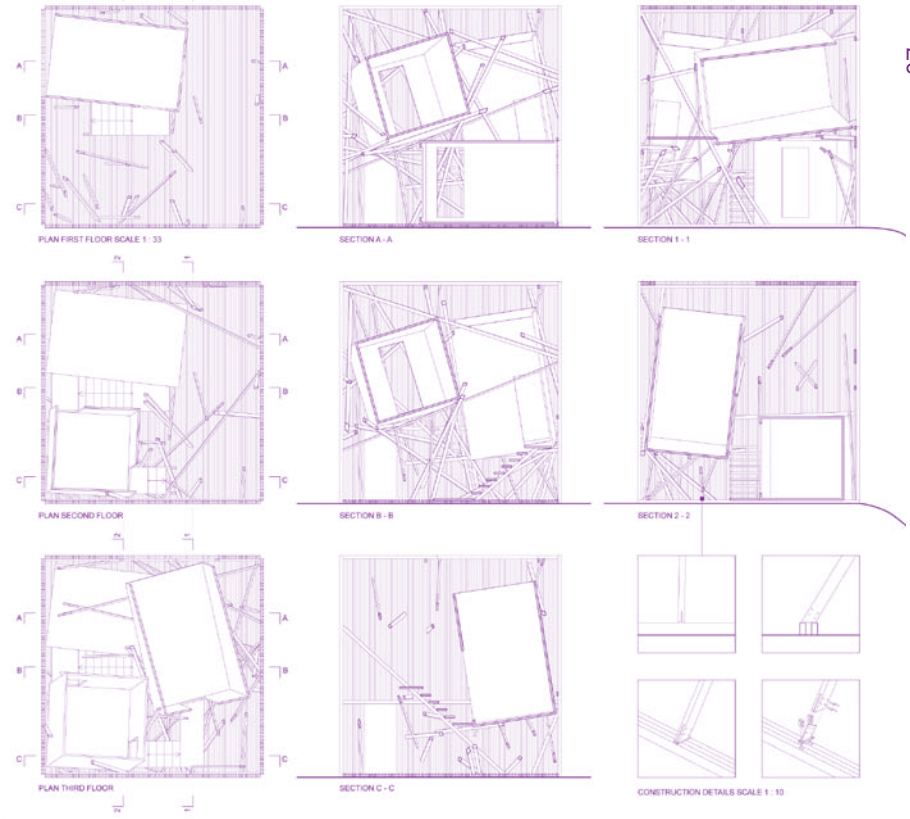
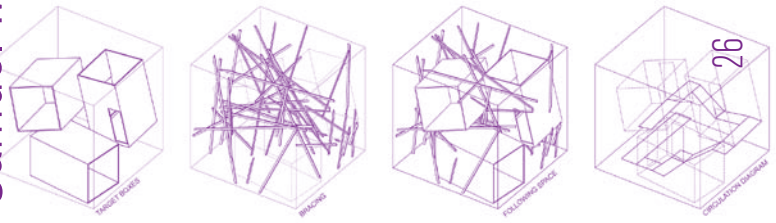
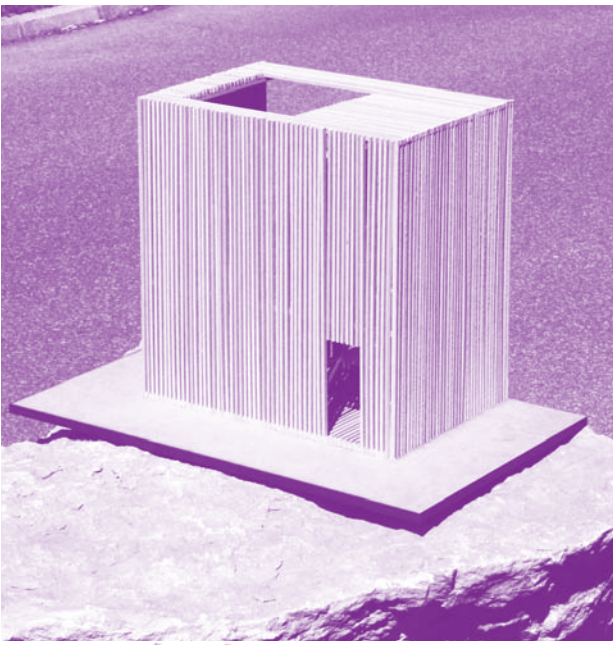
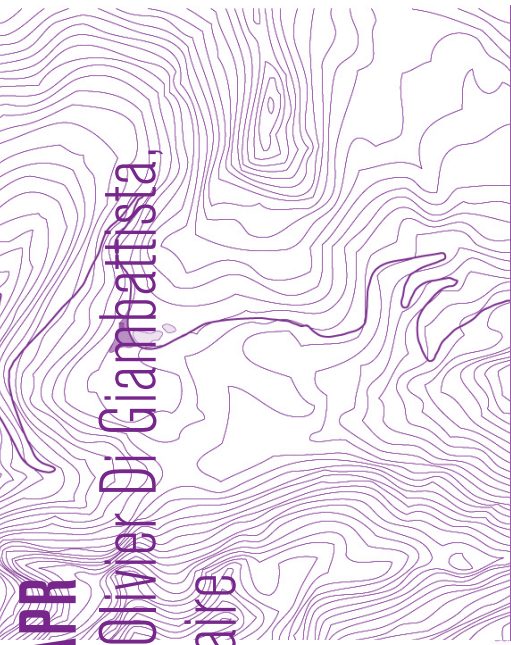
Entrée Alpine: Croix Pass, Martin Lepoutre, Hadrien Tricaud



WK 17 22 APR

Entree Alpine: Nutenen Pass, Olivier Di Giambattista, Samuel Maire

AXONOMETRIC SCALE 1:66



The projects were further developed in several resolutions. While one proposal for an Entrée Alpine was brought to fabrication at a 'one to one' scale, the other projects took the proposals as an initiation into the project for an Alpine Motel. In common critiques both projects were the subject of continuous discourse.

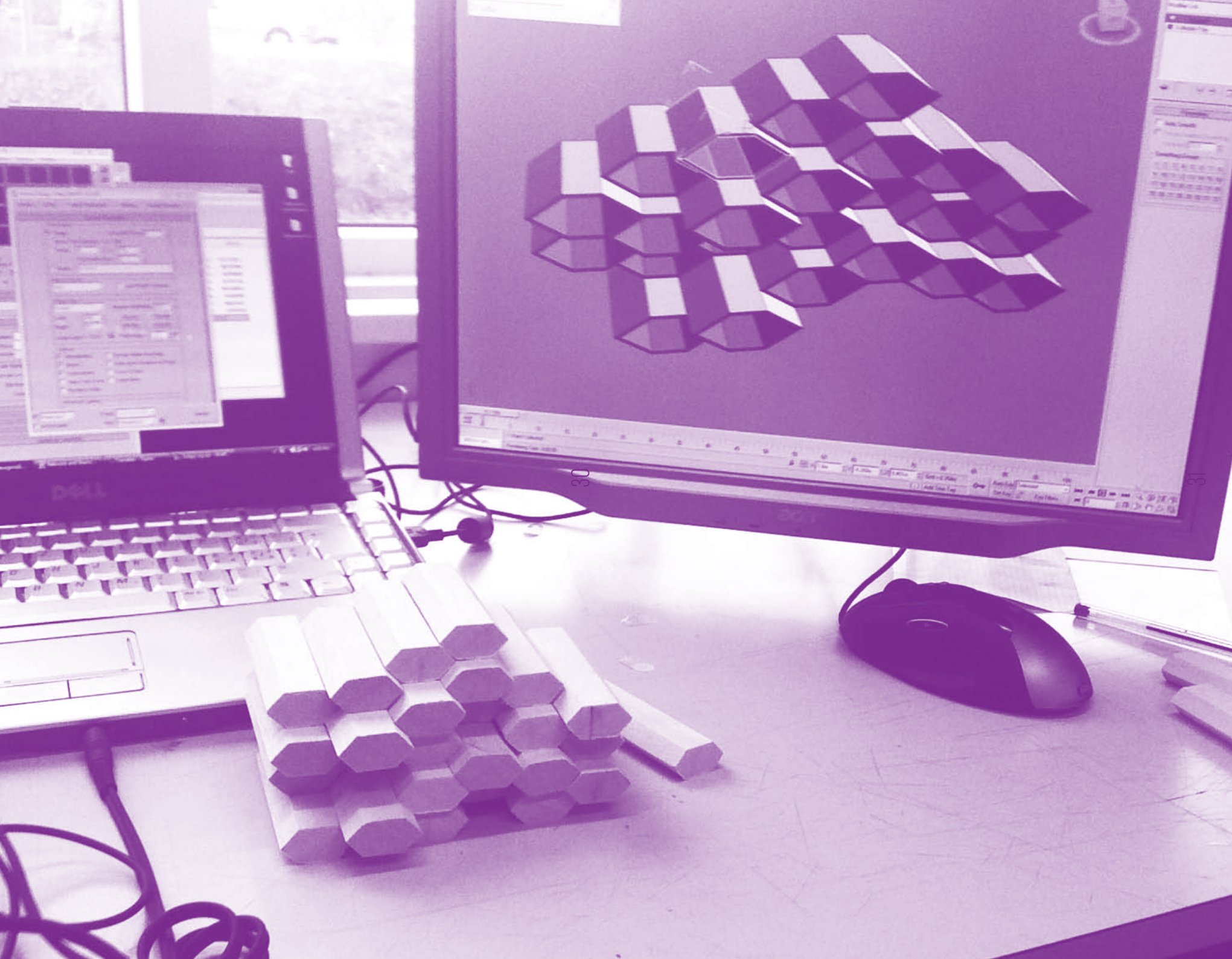
pan

28

The panoramic condition further informed the projects for an Alpine Motel: How can this panoramic quality of a sweeping, unbroken view be confronted with an interiority of space and how will fragmentation address a framing de/framing of the formerly unbroken condition of the presence of an all-encompassing

landscape? How will the concepts found in Entrée Alpine further be developed to become both structure and programmed space?

29

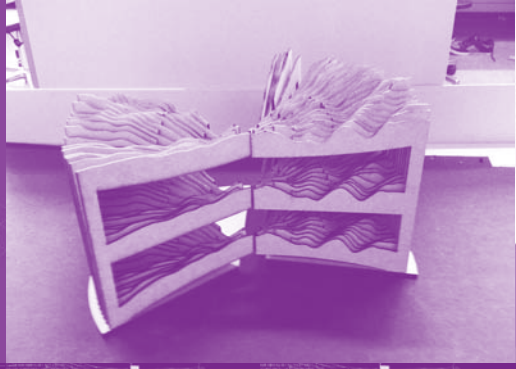
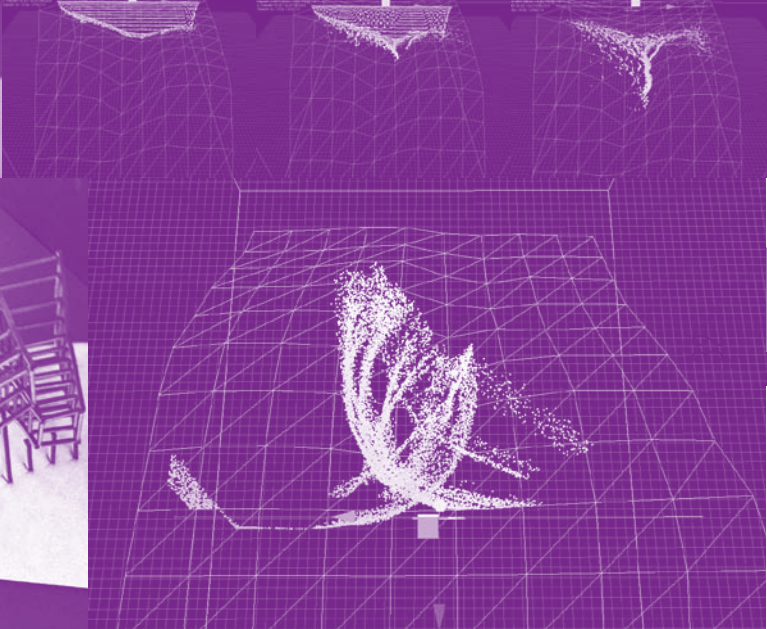
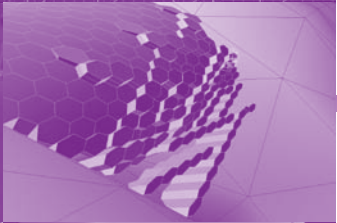


WK 18 29APR

Alpine Motel: San Götthard

Furka Pass Pass, Stage 1, Fabian Roth, Simon Wälti
Alpine Motel: Mezzour

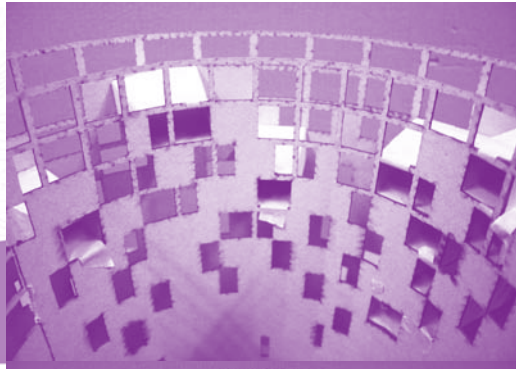
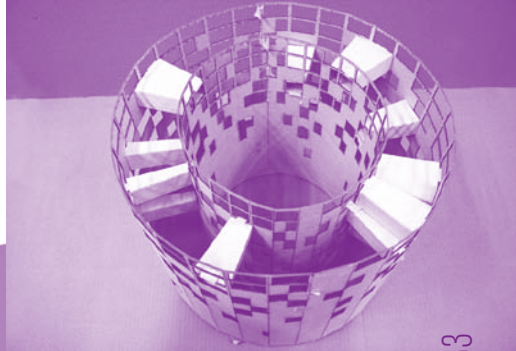
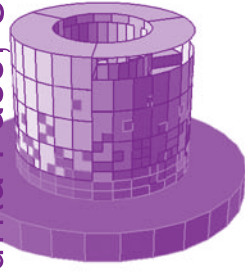
Furka Pass Pass, Stage 1, Fabian Roth, Simon Wälti
Alpine Motel: Kloese



T

WK 19 06MAY

Alpine Motel: Furka Pass, Stage 1, Fabian Roth, Simon Wälti



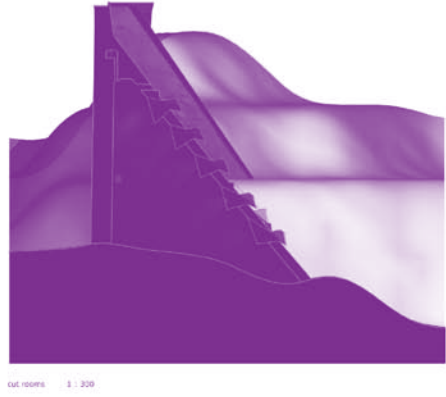
The final phase was devoted to physical production: A 1:1 mock-up of the Entrée Alpine was constructed and a series of physical models for the Alpine Motels were fabricated.

The projects for the Alpine Motels entered a phase of intense model building at the scale of 1 / 33. For the final presentation the focus was lying on these models. Model building crafts, conceptual stringency, spatiality, as well as site specific translation of the particular project into a physical artifact formed the main criteria for the evaluation of the projects.

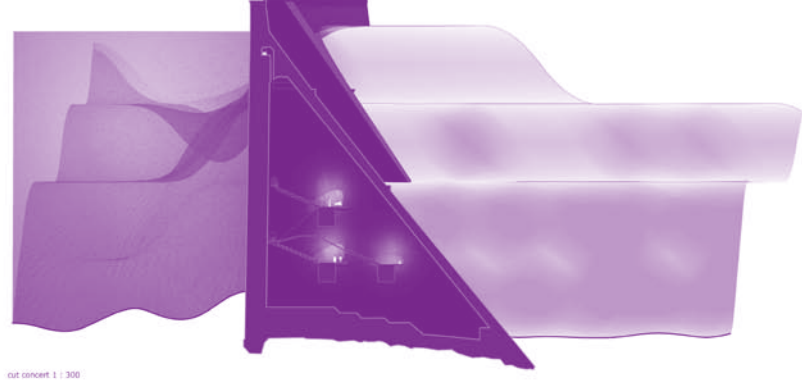
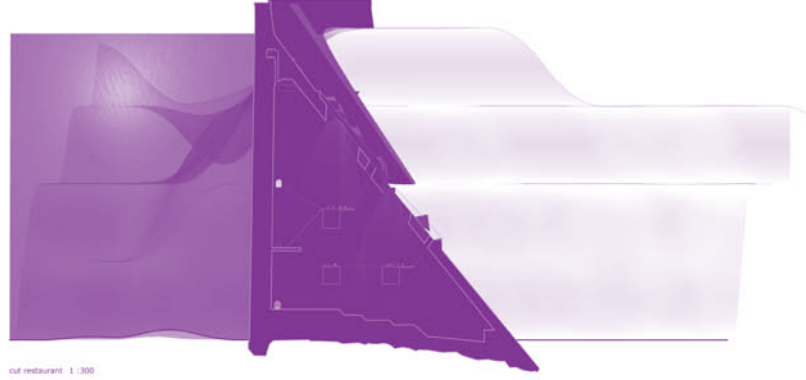
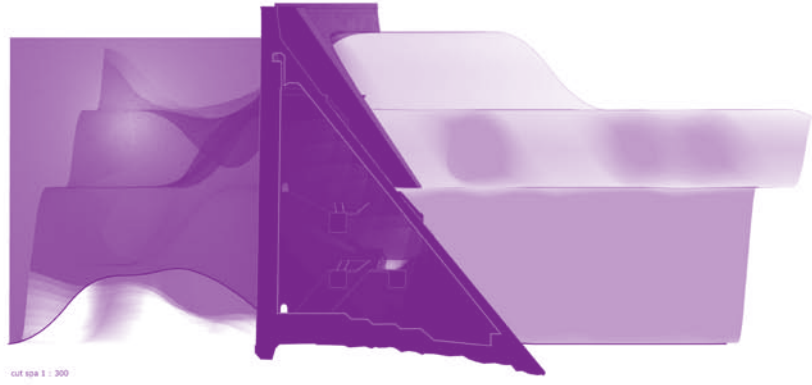


WK 21 20MAY

Alpine Motel: Grimsel Pass: Grimsel Damm, Julien Prudhomme, Carole Westhoff



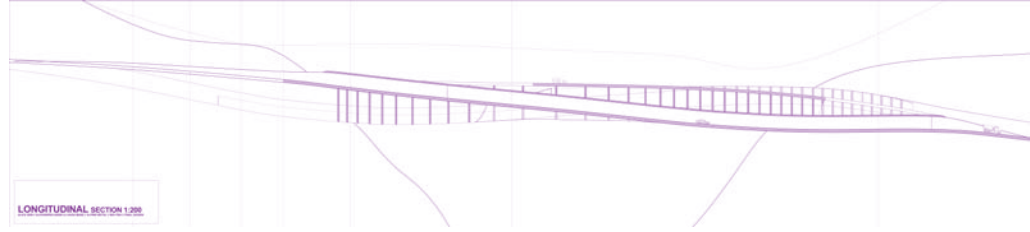
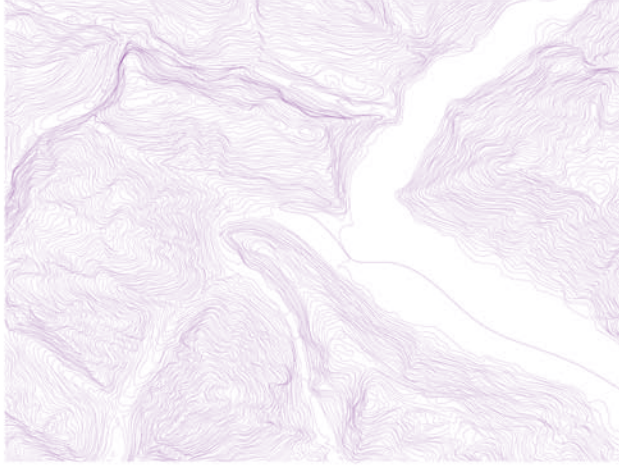
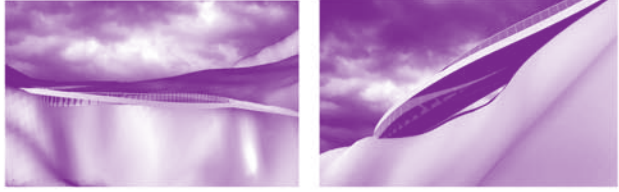
38



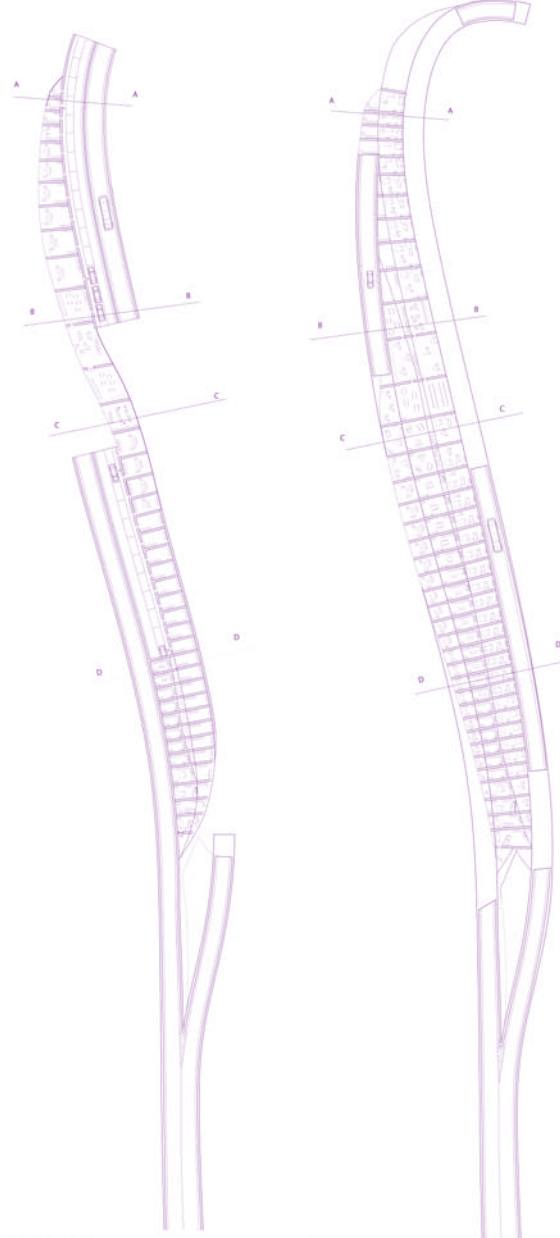
39



SITUATION PLAN 1:200 // 1:40000 // RENDERINGS



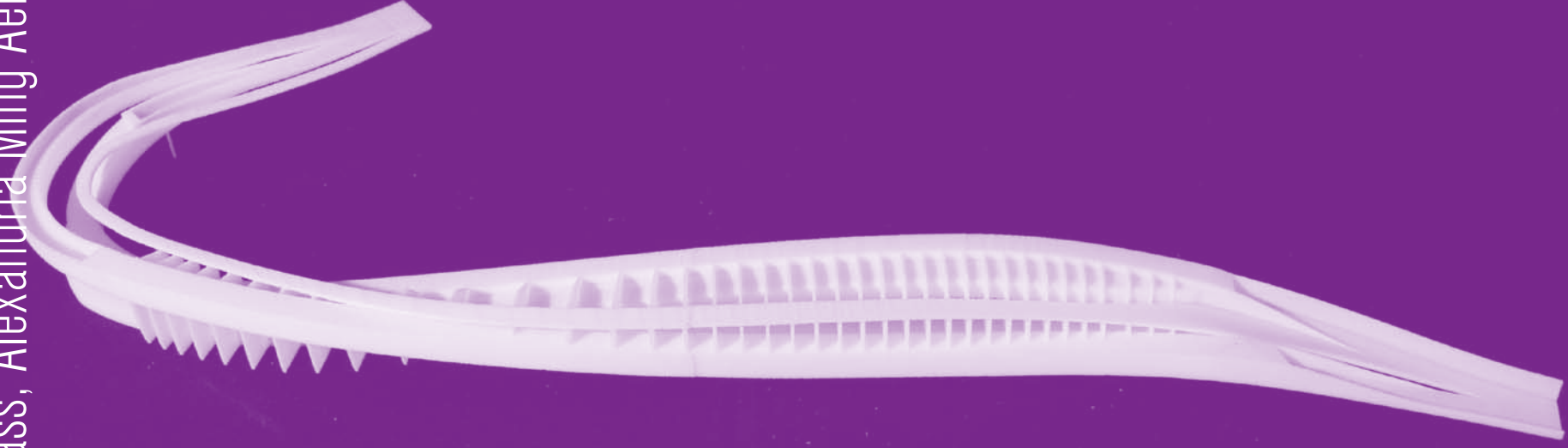
LONGITUDINAL SECTION 1:200



LEVEL ONE PLAN 1:200 // HIGHWAY // PARKING // FIRST FLOOR

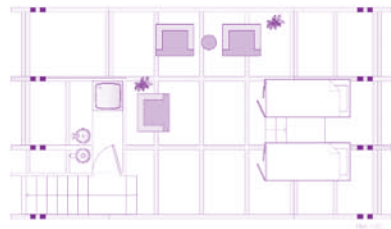
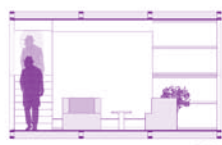
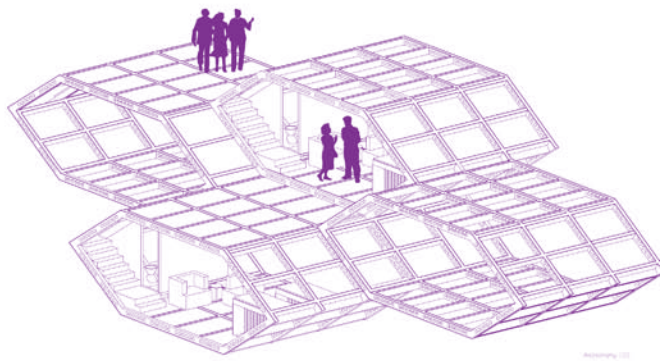
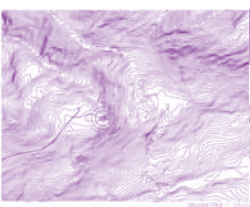
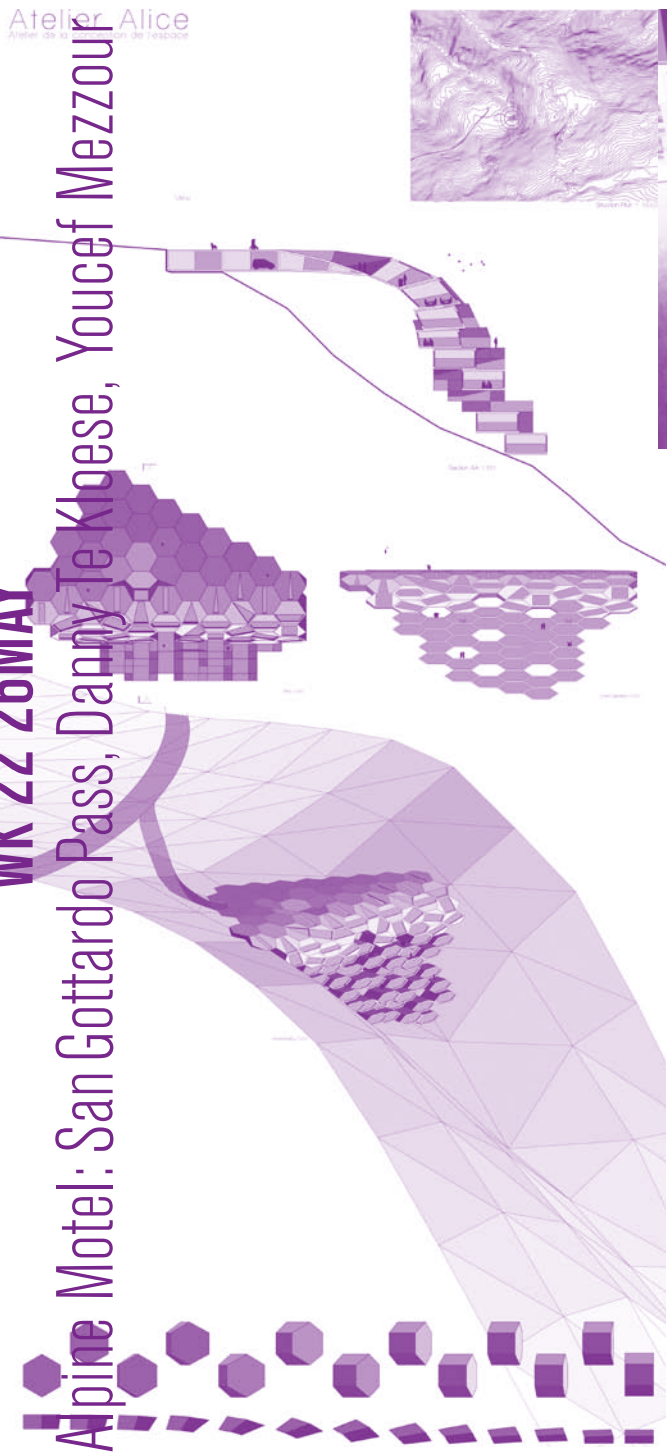
LEVEL TWO PLAN 1:200 // ROOM RHYTHM // MEZANINE FLOOR

Alpine Motel: Simplon Pass, Alexandria Ming Aerni, Lukas Manz



Alpine Motel: San Gottardo Pass, Danny Te Kloese, Youcef Mezzour

WK 22 26 MAY



alice students 2008/2009

**Alexandria Ming Aerni, Ahmed Belkhodja, Augustin Clement,
Samuel Devanbéry, Lionel Epiney, Nicolas Feihl,
Olivier Di Giambattista, David Jenny, Eveline Job, Elias Kesselring,
Jonas Läubli, Martin Lepoutre, Samuel Maire, Lukas Manz,
Benjamin Melly, Adrian Llewelyn Meredith, Youcef Mezzour,
François Nantermod, Julien Prudhomme, Korab Ramadani,
Fabian Roth, Gabriela Schär, Danny Te Kloese, Barbara Thüler,
Hadrien Tricaud, Tom Doan Tuan, Vy Pham Thi Hoang,
Simon Wälti, Anina Weber, Carole Westhoff**

alice team

**Dieter Dietz, Aline Dubach, Eveline Galatis, Olivier Ottevaere,
Daniel Pokora, Isabella Pasqualini, Katia Ritz**

booklet, concept and design

Jonas Voegeli, Aline Dubach, Caroline Pachoud (Colour Concept)

46

many thanks to

**Jürg Altherr, Geneviève Bonnard, Hany Buri, Renate Buser,
Francesco Della Casa, Stylianos Dritsas, Jean Pierre Dürigg,
Urs Egg, Pierre Gurtner, Hiéronyme Lacroix, Guillaume Labelle,
Julien Nembrini, Camilo Rebelo, Marc Schmidt, Peter Staub,
David Vessaz, Yves Weinand, Christine Zufferey**
for inspiring critics and discussions.

special thanks to

**Marc Parlange, Doyen ENAC EPFL; Nicolas Henchoz,
Director EPFL+ECAL lab; Ines Lumunière, Director SAR, EPFL;
Bruno Marchand, Director IA, EPFL; Eveline Galatis,
ALICE lab EPFL**
for their wide spread support.

47

acknowledgments

**http://
alice.epfl.ch**