

**Elf-1 and Stat5 bind to a critical element in a
new enhancer of the human interleukin-2
receptor alpha gene.**

P Lécine, M Algarté, P Rameil, C Beadling, P Bucher, M Nabholz
and J Imbert
Mol. Cell. Biol. 1997, 17(4):2351.

Updated information and services can be found at:
<http://mcb.asm.org/content/17/4/2351.citation>

CONTENT ALERTS

These include:

Receive: RSS Feeds, eTOCs, free email alerts (when new articles
cite this article), [more»](#)

Information about commercial reprint orders: <http://mcb.asm.org/site/misc/reprints.xhtml>
To subscribe to to another ASM Journal go to: <http://journals.asm.org/site/subscriptions/>

AUTHOR'S CORRECTION

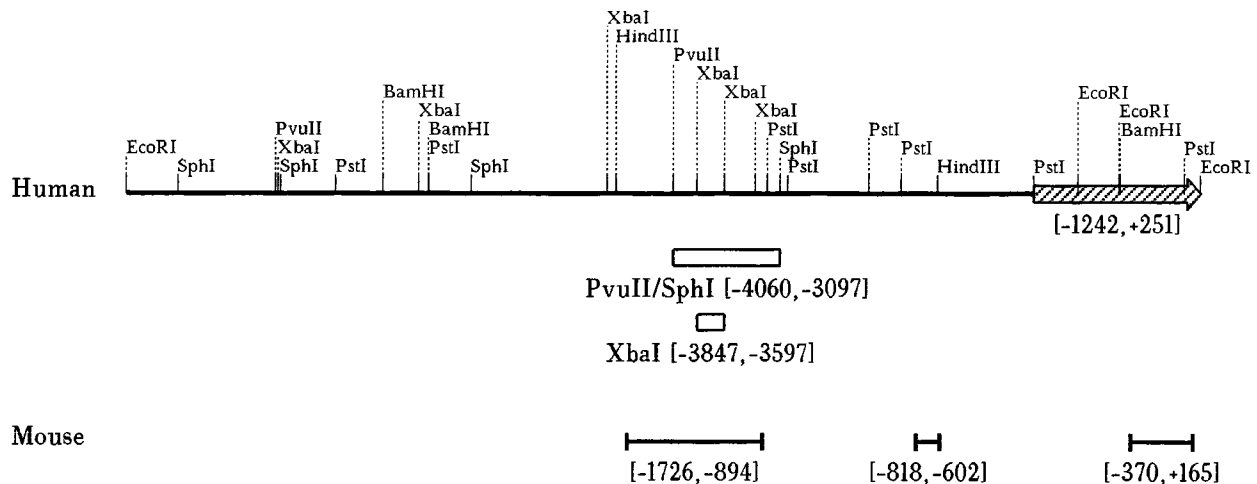
Elf-1 and Stat5 Bind to a Critical Element in a New Enhancer of the Human Interleukin-2 Receptor α Gene

PATRICK LÉCINE, MICHÈLE ALGARTÉ, PASCAL RAMEIL, CAROL BEADLING, PHILIPP BUCHER, MARKUS NABHOLZ, AND JEAN IMBERT

INSERM U119, 13009 Marseille, France; Lymphocyte Activation Laboratory, Imperial Cancer Research Fund, London WC2A 3PX, United Kingdom; and Swiss Institute for Experimental Cancer Research, CH-1066 Epalinges, Switzerland

Volume 16, no. 12, p. 6831: The nucleotide numbering in Fig. 1 was inadvertently erroneous. A mistake during the computer-assisted assembling of the contigs introduced an artificial internal duplication of 413 bp, downstream of the interleukin-2-responsive enhancer (IL-2rE) within a repetitive portion of the sequence. The corrected Fig. 1 is shown below. The corresponding entry Z70243 in the EMBL Nucleotide Sequence Database has been corrected accordingly. We apologize for any confusion that this may have caused.

A



B

Human:	GASd/EBSd		GASp/GATA			EBSp	
-3780	-3770	-3760	-3750	-3740	-3730	-3720	-3710
GCTGTTCTGAGCAGTTTC	<u>TTCTAGGAA</u>	GTACCAAACAT	<u>TTCTGATAA</u>	TAGAATTGAGCAAT	<u>TTCCT</u>	GATGAAGTGAGACTCAGCTT	
GATATGATGTGCAGTTTC	<u>TTCTGAGAA</u>	GTACCAGACAT	<u>TTCTGATAA</u>	GAGAGTTGAGCAAC	<u>TTCCT</u>	GAT-ATGTGAGACTCAGCTT	
-1380	-1370	-1360	-1350	-1340	-1330	-1320	-1310
Mouse:	GASd		GASp/GATA			EBSp	