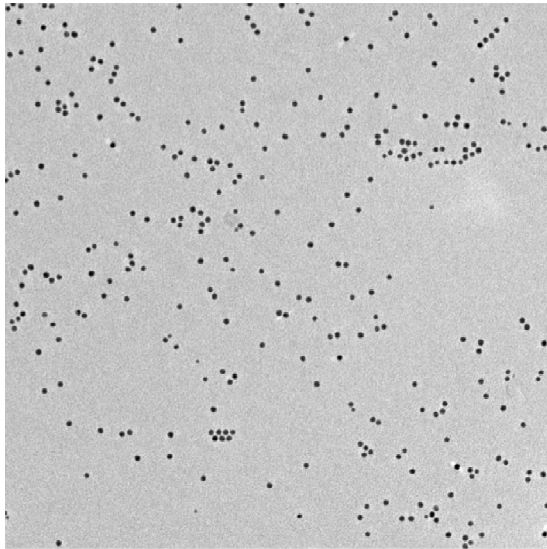
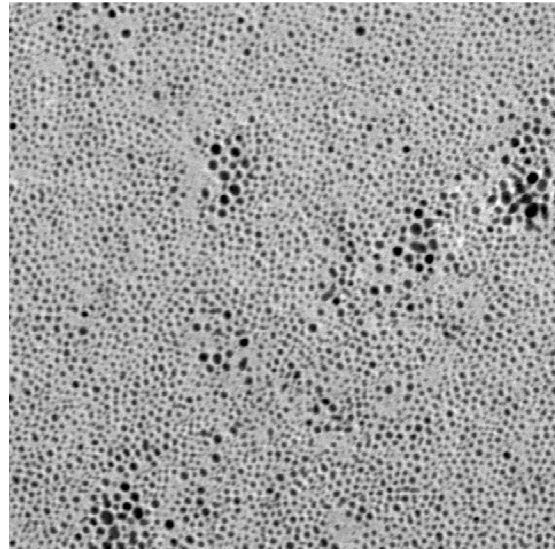


Supplementary Figure S1: 2D SEDFIT screen capture. The $c(s, f/f_0)$ model was applied to fit ~70 AUC scans for $\text{Au}_{144}(\text{SR})_{60}$.



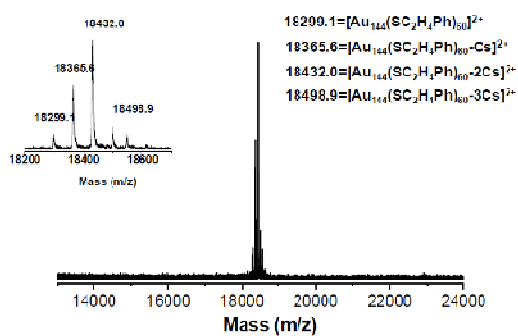
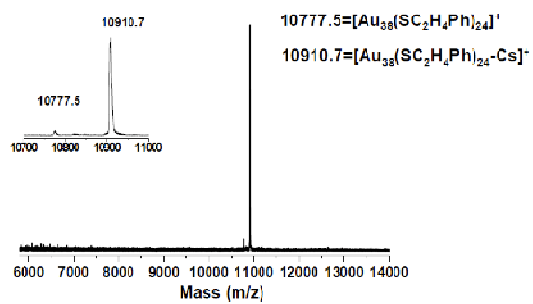
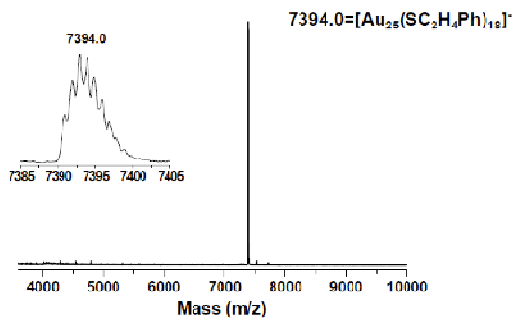
100 nm
HV=120.0kV
Direct Mag: 27000x
AMT Camera System



20 nm
HV=200.0KV
Direct Mag: 50000x
AMT Camera System

Supplementary Figure S2: TEM micrographs of PDT-NPs and MUS-NPs.

Transmission electron microscope (TEM) images illustrating the availability of information by this method.



Supplementary Figure S3: ESI-MS time-of-flight (TOF) spectra. ESI-MS TOF for $\text{Au}_{25}(\text{SCH}_2\text{CH}_2\text{Ph})_{18}^-$, $\text{Au}_{38}(\text{SCH}_2\text{CH}_2\text{Ph})_{24}^-$, and $\text{Au}_{144}(\text{SCH}_2\text{CH}_2\text{Ph})_{60}^{2+}$ nanoclusters.