

# A cell nanoinjector based on carbon nanotubes

Xing Chen<sup>\*†</sup>, Andras Kis<sup>‡</sup>, A. Zettl<sup>†§¶</sup>, and Carolyn R. Bertozzi<sup>\*†¶||\*\*††</sup>

Departments of <sup>\*</sup>Chemistry, <sup>‡</sup>Physics and <sup>||</sup>Molecular and Cell Biology, <sup>\*\*</sup>Howard Hughes Medical Institute, and <sup>§</sup>Center of Integrated Nanomechanical Systems, University of California, Berkeley, CA 94720; and <sup>††</sup>Molecular Foundry and <sup>¶</sup>Materials Sciences Division, Lawrence Berkeley National Laboratory, Berkeley, CA 94720

Edited by Ronald D. Vale, University of California, San Francisco, CA, and approved March 28, 2007 (received for review January 21, 2007)

**Technologies for introducing molecules into living cells are vital for probing the physical properties and biochemical interactions that govern the cell's behavior. Here, we report the development of a nanoscale cell injection system (termed the nanoinjector) that uses carbon nanotubes to deliver cargo into cells. A single multiwalled carbon nanotube attached to an atomic force microscope (AFM) tip was functionalized with cargo via a disulfide-based linker. Penetration of cell membranes with this "nanoneedle" was controlled by the AFM. The following reductive cleavage of the disulfide bonds within the cell's interior resulted in the release of cargo inside the cells, after which the nanoneedle was retracted by AFM control. The capability of the nanoinjector was demonstrated by injection of protein-coated quantum dots into live human cells. Single-particle tracking was used to characterize the diffusion dynamics of injected quantum dots in the cytosol. This technique causes no discernible membrane or cell damage, and can deliver a discrete number of molecules to the cell's interior without the requirement of a carrier solvent.**

bionanotechnology | disulfide chemistry | intracellular delivery | nanoneedle | nanoinjection

**T**echnologies for introducing exogenous materials into cells play a central role in experimental cell biology. The major challenge is to overcome the barrier imposed by the plasma membrane. This challenge has been addressed in a variety of ways, such as permeabilization of the membrane with lipids, electric currents, or pore-forming toxins, and physical penetration with a micropipette (i.e., microinjection) or microprojectile (1). Each method has its advantages and disadvantages, but one common liability is physical damage to the cell membrane.

To overcome this problem, we sought to develop an alternative method of intracellular delivery that combines the microinjection concept with emerging tools from nanotechnology. We envisioned a "nanoinjector" that would penetrate cell membranes with minimal perturbation, delivering cargo to the cell's interior with high spatial resolution (at the nanometer scale). The proposed technology comprised three essential components: a needle with nanoscale diameter, a manipulator with nanoscale resolution, and controllable loading and releasing of cargo. Here, we report the construction and successful operation of a cell nanoinjector in which a single multiwalled carbon nanotube (MWNT) attached to an atomic force microscope (AFM) tip served as the "nanoneedle" and in which an AFM integrated with an inverted fluorescence microscope served as the nanomanipulator (Fig. 1).

## Results and Discussion

With needle-like geometry, large Young's modulus and high tensile strength (2, 3), carbon nanotubes (CNTs) are ideal nanoscale needles for this purpose. Their diameters can be selected from a range of 1–20 nm, a scale that allows physical penetration of a cell's membrane without significant disruption of the cell's macrostructure. Indeed, such a piercing, which is on the scale of a single protein's diameter, should readily heal by lipid diffusion without perturbation of the cytoskeleton (4). Already, CNTs have demonstrated utility as cell transfection reagents and membrane penetrating delivery vehicles (5–8).

The nanomanipulation system was based on a commercially available AFM (MFP-3D-BIO; Asylum Research, Santa Barbara, CA) that integrates an inverted fluorescence microscope (Nikon Eclipse TE2000-U). The AFM platform was ideal for this application, as it offers control of nanoneedle displacement at nanometer scale resolution and the ability to apply and monitor forces on the cell membrane. Thus, the AFM enabled precise positioning of the nanoneedle and high sensitivity monitoring of the membrane-piercing event.

The MWNT-AFM tips used in this work were fabricated as described (9). In brief, an individual MWNT of 10–20 nm in diameter was retrieved from a metal foil by the AFM tip by using a nanomanipulator inside a scanning electron microscope (SEM). The MWNT was then cut to the desired length (0.5–1.5  $\mu\text{m}$ ) by using an electron beam or electrical current. SEM and transmission electron microscopy (TEM) images of one representative MWNT-AFM tip are shown in Fig. 2 *A* and *B*, respectively.

For the controlled loading and release of cargo, we aimed to design a system that would obviate the need for a carrier solvent and, accordingly, the addition of excess volume to the cell's cytosol during the injection process. Toward this end, we exploited established chemical methods for CNT surface modification (10) and the intrinsic difference in redox potential between the intracellular and extracellular environments (11). Compound **1** (Fig. 3) fulfilled the functions of cargo loading and release as follows. Its pyrene moiety binds strongly to CNT surfaces by means of  $\pi$ - $\pi$  stacking (12). Compound **1** is also endowed with a biotin moiety, separated from the pyrene group via a disulfide bond. In the relatively oxidizing environment of the cell's exterior, the disulfide is stable. However, once exposed to the reducing environment of the cytosol, the disulfide is cleaved, liberating attached cargo. The kinetics of disulfide bond cleavage within mammalian cells has been extensively studied, allowing prediction of release rates during the nanoinjection process (11, 13, 14).

To demonstrate the function of the nanoinjector, we sought to deliver quantum dots to the cell's cytosol without concomitant membrane and cell damage, effects that are hard to avoid with conventional delivery technologies (1). Quantum dots have emerged as powerful optical probes for single particle and single molecule studies in cellular systems (15). Their bright fluorescence and resistance to photobleaching have enabled single-particle tracking of membrane proteins on the cell surface (16)

Author contributions: X.C., A.Z., and C.R.B. designed research; X.C. and A.K. performed research; X.C., A.K., A.Z., and C.R.B. analyzed data; and X.C., A.Z., and C.R.B. wrote the paper.

The authors declare no conflict of interest.

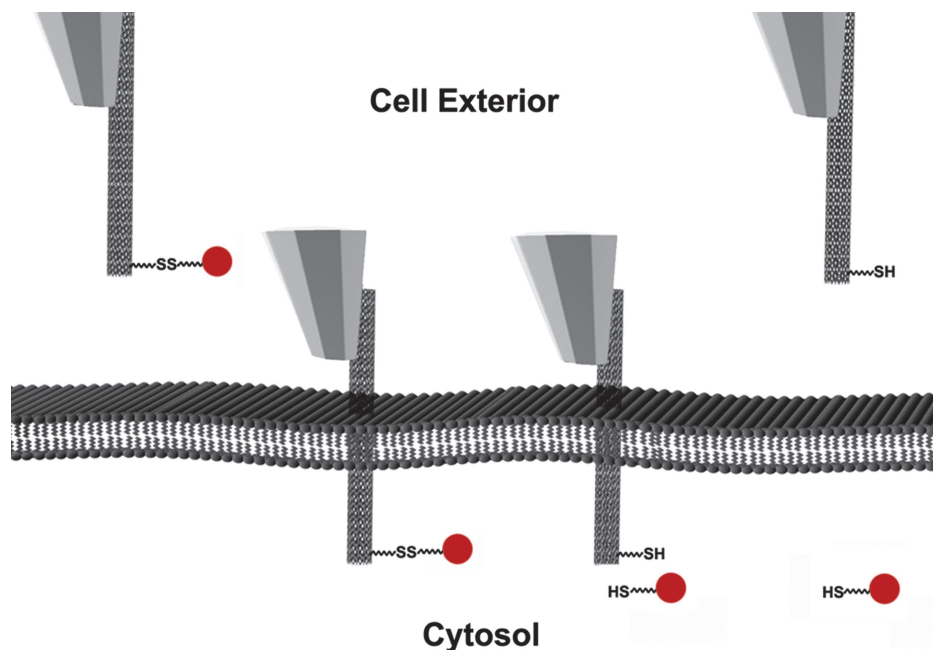
This article is a PNAS Direct Submission.

Abbreviations: CNT, carbon nanotube; MWNT, multiwalled carbon nanotube; AFM, atomic force microscope; SEM, scanning electron microscope; TEM, transmission electron microscope.

<sup>†</sup>To whom correspondence may be addressed. E-mail: crb@berkeley.edu or azettl@berkeley.edu.

This article contains supporting information online at [www.pnas.org/cgi/content/full/0700567104/DC1](http://www.pnas.org/cgi/content/full/0700567104/DC1).

© 2007 by The National Academy of Sciences of the USA



**Fig. 1.** Schematic of the nanoinjection procedure. A MWNT-AFM tip with cargo attached to the MWNT surface via a disulfide linker penetrates a cell membrane. After disulfide reduction within the cell's cytosol, the cargo is released and the nanoneedle is retracted.

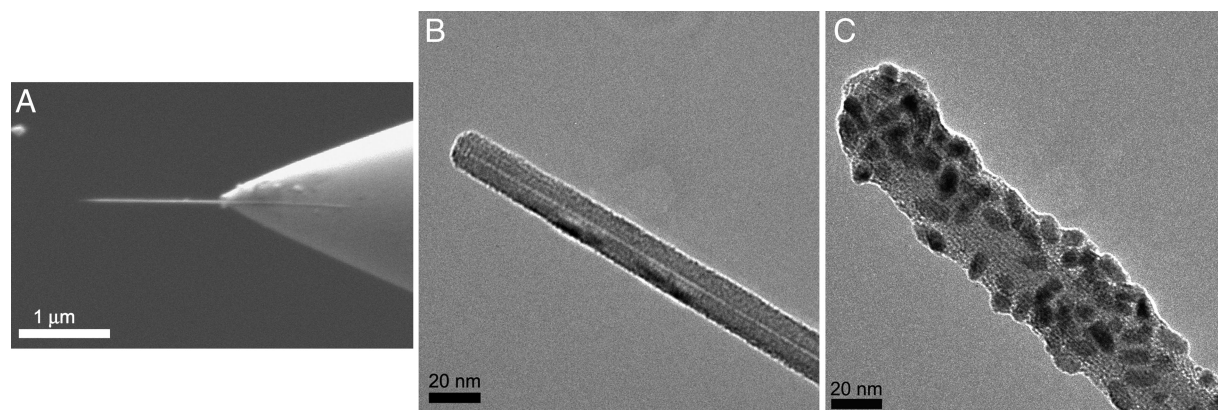
and vesicles within cells (17). Without a delivery vehicle, quantum dots cannot access the cell's cytosol and nuclei. Accordingly, processes therein have been refractory to study using quantum dot technology.

We coated the MWNT-AFM tip with compound **1** by coincubation in methanol. The tip was then loaded with streptavidin-coated quantum dots (QDot streptavidin; Invitrogen) via non-covalent complexation of streptavidin with biotin in borate buffer (Fig. 3A). The loaded MWNT-AFM tips were characterized by TEM. As shown in Fig. 2C, multiple QDot streptavidin conjugates were successfully loaded onto a single MWNT functionalized with compound **1** (up to several hundred per  $1\text{-}\mu\text{M}$  tip). In a control experiment, MWNT-AFM tips were incubated directly with QDot streptavidin without prior coating with compound **1**. In this case, no QDot streptavidin conjugates were observed on the MWNT surface [see [supporting information \(SI\) Fig. 5](#)].

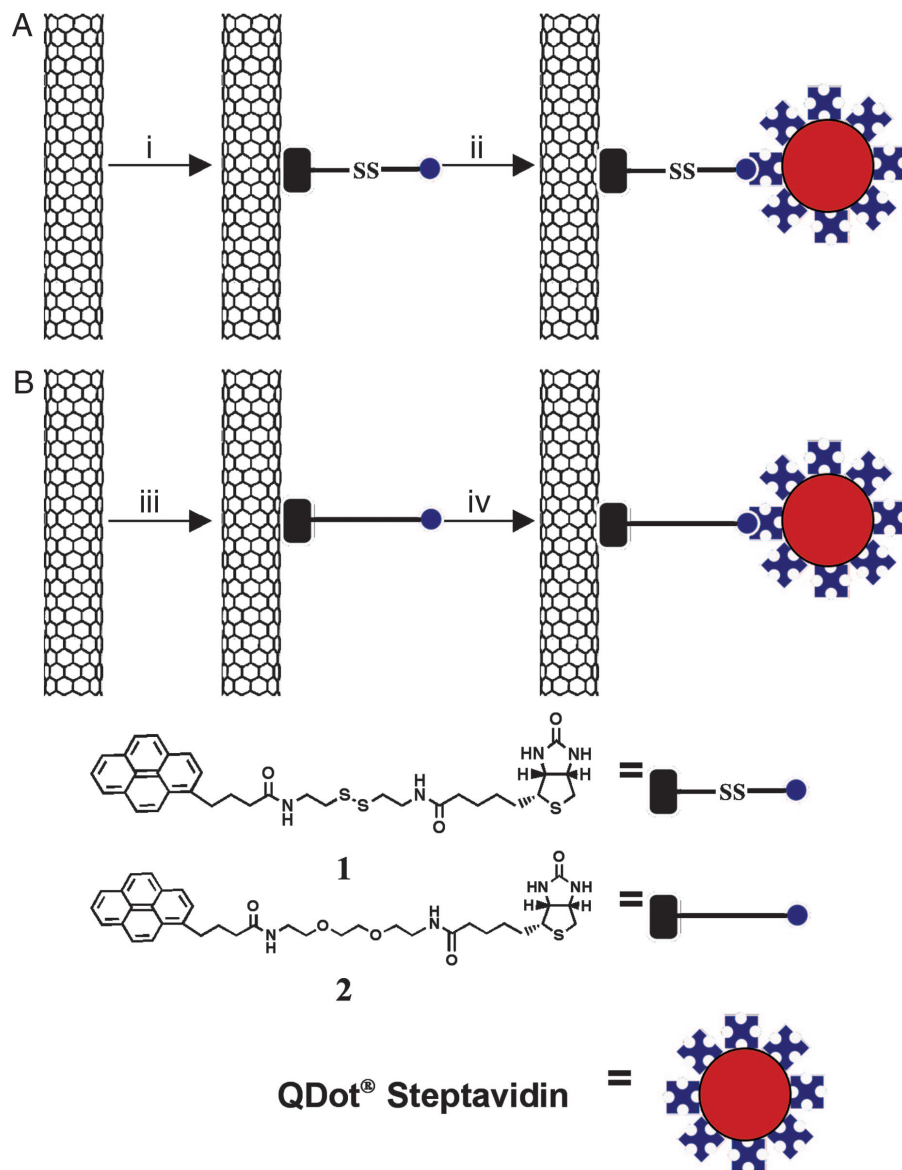
The nanoinjection experiments were then carried out by using cultured HeLa cells, a human cervical epithelial cancer cell line.

A target cell within the field of the optical microscope was identified, as indicated by the arrow in Fig. 4B. The cantilever was then positioned on top of the target cell and the scan size was set to 0 nm. The deflection of the cantilever was measured with a photodiode to monitor the displacement of the nanoneedle as the MWNT-AFM tip approached the cell surface. After the MWNT came into contact with the cell, the cantilever was further lowered so that the MWNT nanoneedle penetrated the membrane. The MWNT nanoneedle was then maintained inside the cell for various periods of time to allow reductive cleavage of disulfide bonds and release of QDot streptavidin conjugates. After injection, the cantilever was retracted and the cell was imaged by fluorescence microscopy.

As shown in Fig. 4, fluorescence intensity inside the target cell indicated the release of quantum dots. QDot streptavidin conjugates were never observed in neighboring cells. We confirmed that the released quantum dots were within the cell's interior by video microscopy analysis. Their mobility was limited to the confines of the cell, where they exhibited slow diffusion and



**Fig. 2.** Characterization of nanoneedles before and after loading the cargo. (A) SEM image of a MWNT-AFM tip. (B) TEM image of the tip region of A. (C) TEM image of a MWNT-AFM tip coated with linker **1** and conjugated with QDot streptavidin.



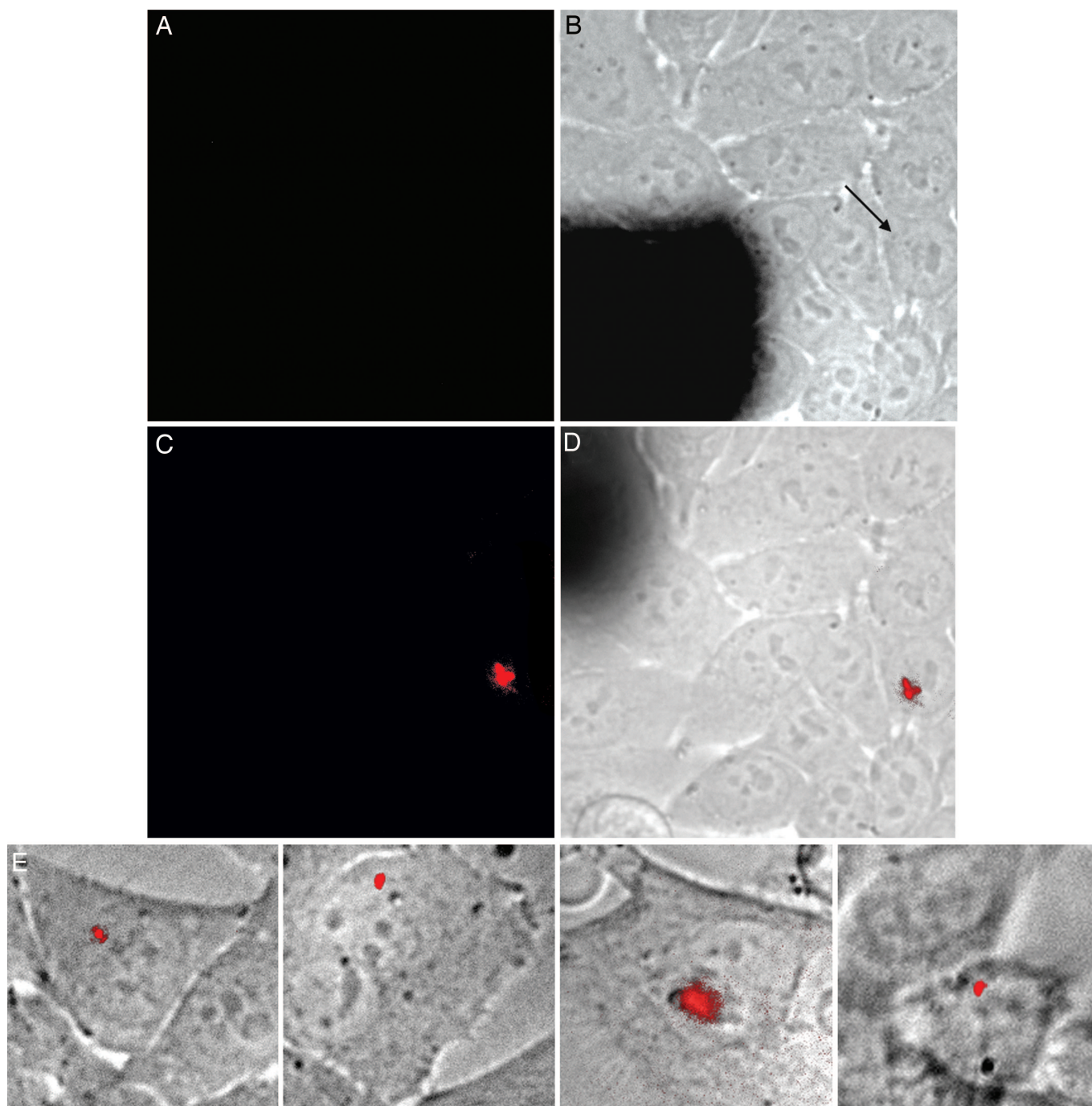
**Fig. 3.** Functionalization of MWNT-AFM tips. (A) QDot streptavidin was attached to the MWNT surface although linker 1 containing a disulfide bond: (i) 1, MeOH; (ii) QDot streptavidin, borate buffer. (B) QDot streptavidin was attached to the MWNT surface although linker 2 containing no disulfide bond: (iii) 2, MeOH; (iv) QDot streptavidin, borate buffer.

eventual immobilization, perhaps because of interactions with organelle membranes or cytoskeletal fibers (SI Movie 1).

In a typical experiment, a 15- to 30-min incubation of the nanoneedle inside the cell was sufficient for release of a detectable number of quantum dots (Fig. 4). This observation is consistent with published disulfide reduction rates. Each quantum dot possesses  $\approx 15$  streptavidin molecules and each streptavidin molecule can bind four biotin moieties. Therefore, the quantum dots are likely bound to MWNT surfaces via multiple disulfide bonds. The complete reduction of four disulfides within a protein molecule requires 15 min to 1 h (13, 14), consistent with the release kinetics that we observe *in situ*. Based on fluorescence intensity calibration experiments using free quantum dots in solution, and the sensitivity of our fluorescence microscope, we estimate that the fluorescence intensity in Fig. 4 represents small clusters of quantum dots with a diameter of 50–100 nm (i.e., 5–50 quantum dots depending on their arrangement).

To rule out the possibility that release of the QDot streptavidin conjugates occurred by desorption of the pyrene moiety

from the MWNT surface rather than disulfide cleavage, we loaded cargo onto the MWNTs using control compound 2 (Fig. 3B). This linker possesses pyrene and biotin moieties, but replaces the disulfide bond with a polyethylene glycol (PEG) spacer separating the MWNT and streptavidin binding elements. We functionalized MWNT-AFM tips with compound 2 and then loaded QDot streptavidin conjugates onto the nanoneedle. The modified MWNT-AFM tips were analyzed by TEM and were similar to MWNT-AFM tips bearing the disulfide-bound conjugates (see SI Fig. 6). Similar nanoinjection experiments were carried out by using HeLa cells, but, in this case, no QDot streptavidin conjugates were released (with  $>5$  different MWNT-AFM tips in  $>10$  injection experiments) (see SI Fig. 7). These results have two important implications. First, the release mechanism depends on disulfide bond cleavage and is therefore not simply due to desorption of the pyrene moiety from the MWNT surface. Second, the requirement of disulfide cleavage confirms that cargo release occurred within the reducing environment of the cytosol.



**Fig. 4.** Nanoinjection of QDot streptavidin conjugates into a target HeLa cell. (A) Fluorescence image of the cells before nanoinjection. (B) Combined bright-field and fluorescence image of the cells before nanoinjection. The inserted arrow indicates the target cell. The dark shape in the lower left corner is the AFM cantilever. (C) Fluorescence image of the cells after the nanoinjection, showing fluorescent QDot streptavidin conjugates released inside the target cell. (D) Combined bright-field and fluorescence image of the cells after the nanoinjection. The QDot streptavidin conjugates are shown in red. The dark shape in the upper left corner is the retracted AFM cantilever. (E) Combined bright-field and fluorescence image of another four examples of HeLa cells after nanoinjection of QDot streptavidin. In all cases, fluorescence images were acquired with  $\lambda_{\text{ex}} = 415$  nm and data collection with a 655-nm filter. Images are  $70 \times 70 \mu\text{m}$  in A–D and  $30 \times 30 \mu\text{m}$  in E.

A limitation of many intracellular delivery technologies is the harmful effects they exert on membranes and cells. Therefore, we probed the effects of nanoinjection on membrane integrity and cell viability using three assays: (i) the trypan blue exclusion assay (18), (ii) the Calcein AM assay (19), and (iii) the Annexin V-FITC/propidium iodide (PI) assay for apoptosis (20). In the trypan blue assay, the dye was added immediately after cell nanoinjection and the cells were monitored for 10 h thereafter. No trypan blue

inclusion or reduction in cell viability was observed during this time period (see SI Table 1). In the Calcein AM assay, the cells were loaded with the fluorescent dye immediately before nanoinjection. Similar to the previous results, we saw no evidence of compromised membrane integrity for up to 10 h (see SI Fig. 8). Finally, nanoinjected cells showed no detectable staining with Annexin V-FITC or PI up to 10 h after the event (see SI Fig. 9). Thus, nanoinjection does not seem to induce apoptotic pathways in the cells. In some

experiments, we held the nanoneedle inside the cell for >1 h without any visible effect on membrane integrity and cell viability. By contrast, a microinjection needle must typically be retracted within seconds of injection to avoid cell damage (21). Notably, the biocompatibility of nano-injection should allow for exploration of a broad range of release chemistries that occur over extended time periods.

The ability to deliver quantum dots to the cell's cytoplasm provides a platform for numerous studies of intracellular processes. As an example, we used the single-particle tracking technique (16, 17, 22) to characterize the diffusion dynamics of injected quantum dots in the cytosol, which has been previously studied by using methods that can harm cells (23). After nano-injection, the diffusion dynamics of cytosolic quantum dots were characterized by analyzing the mean square distance ( $\Delta r^2$ ) and traveling time ( $\Delta t$ ) for an injected quantum dot cluster (see SI Fig. 10). The slope of the best-fit line afforded a diffusion coefficient of  $0.3 \mu\text{m}^2/\text{s}$ . This value is  $\approx 10$ -fold lower than diffusion coefficients measured in pure water, which is consistent with previous measurements (23). A major advantage of the biocompatible nano-injection technology is that the process can be performed repeatedly, or in tandem with other measurements, throughout the normal life cycle of the cell.

In summary, the nanoinjector provides a mechanism for delivering a discrete, small number of molecules into cells without need for carrier solvent and with no apparent cell damage. The unique capabilities of the nanoinjector can be further exploited in a number of ways. Other biomolecules such as DNA and RNA, or synthetic structures such as polymers, dendrimers and nanoparticles can be delivered into cells in a similar fashion. In conjunction with organelle-specific optical probes, the nanoinjector concept might be extended to the delivery of cargo to specific subcellular compartments. In principle, cells such as bacteria that are too small for microinjection should be amenable to nano-injection. Notably, the architecture of the nanoinjector allows the use of AFM to identify a target cell and position the nanoneedle, and is therefore not limited by the resolution of light microscopy.

## Materials and Methods

**Materials.** All chemical reagents were of analytical grade, obtained from commercial suppliers and used without further purification. The synthetic procedure of compounds **1** and **2** is described in detail in SI Text.

**Fabrication of MWNT-AFM Tips.** The fabrication of MWNT-AFM tips was carried out in an FEI Sirion XL 30 SEM, equipped with a homemade manipulator. The procedure was described in detail in a previous publication (9).

**SEM and TEM Characterization.** SEM images of MWNT-AFM tips were obtained on an FEI Sirion XL 30 SEM operated at 5 keV.

TEM images of unfunctionalized and functionalized MWNT-AFM tips were obtained on a JEOL 2011 microscope operating at an electron energy of 100 keV. A homemade holder was used for loading MWNT-AFM tips.

**Functionalization of MWNT-AFM Tips.** QDot 655 streptavidin conjugates ( $1 \mu\text{M}$  solution, purchased from Invitrogen) were centrifuged at  $5,000 \times g$ , reserving the supernatant, before use. The MWNT-AFM tips were incubated with linker **1** or **2** ( $1 \mu\text{M}$ , MeOH) at room temperature for 1 h, followed by washing three times with methanol and borate buffer (50 mM, pH 8.3), respectively. The MWNT-AFM tips functionalized with **1** or **2** were then incubated with blocking buffer (borate buffer containing 1% BSA) for 30 min. The blocked MWNT-AFM tips were then transferred to a solution of QDot 655 streptavidin conjugates (1:25 dilution) in borate buffer and incubated at room temperature for 30 min, followed by washing three times with borate buffer. The functionalized MWNT-AFM tips were then used directly for nano-injection experiments or dried under  $\text{N}_2$  for TEM characterization. In a control experiment, the MWNT-AFM tips were incubated with blocking buffer for 30 min. The blocked MWNT-AFM tips were then transferred to a solution of QDot 655 streptavidin conjugates (1:25 dilution) in borate buffer and incubated at room temperature for 30 min, followed by washing three times with borate buffer. The MWNT-AFM tips were then dried under  $\text{N}_2$  for TEM characterization.

**Cell Culture Conditions.** HeLa cells were grown in DMEM supplemented with penicillin (100 units/ml), streptomycin (0.1 mg/ml), and 10% FCS and maintained in a 5%  $\text{CO}_2$ , water-saturated atmosphere at  $37^\circ\text{C}$ .

**Cell Viability Studies.** The HeLa cells after nano-injection were studied by using three cell viability assays: trypan blue exclusion assay, Calcein AM assay, and Annexin V-FITC/propidium iodide assay. The experimental procedures are described in detail in SI Text.

We thank C. Bustamante and J. Martinez for help on developing MWNT-AFM tips; U. C. Tam for assistance with cell culture experiments; K. Zhang for assistance with data analysis; G. S. Rangan for assistance with graphics; M. Paulick, R. Chandra, P. Wu, and W. Michelson for helpful discussions; and L. Sohn and R. Dylla-Spears for sharing the instruments. This work was supported by the Director, Office of Science, Office of Basic Energy Sciences, Materials Sciences and Engineering Division, of the U.S. Department of Energy under Contract DE-AC02-05CH11231. Portions of this work were performed at the Molecular Foundry, Lawrence Berkeley National Laboratory, which is supported by the Office of Science, Office of Basic Energy Sciences, of the U.S. Department of Energy under Contract DE-AC02-05CH11231, and in the Center of Integrated Nanomechanical Systems, which is supported by the National Science Foundation.

- Stephens DJ, Pepperkok R (2001) *Proc Natl Acad Sci USA* 98:4295–4298.
- Yu MF, Files BS, Arepalli S, Ruoff RS (2000) *Phys Rev Lett* 84:5552–5555.
- Yu MF, Lourie O, Dyer MJ, Moloni K, Kelly TF, Ruoff RS (2000) *Science* 287:637–640.
- Vereb G, Szollosi J, Matko J, Nagy P, Farkas T, Vigh L, Matyus L, Waldmann TA, Damjanovich S (2003) *Proc Natl Acad Sci USA* 100:8053–8058.
- Pantarotto D, Singh R, McCarthy D, Erhardt M, Briand JP, Prato M, Kostarelos K, Bianco A (2004) *Angew Chem Int Ed* 43:5242–5246.
- Cai D, Mataraza JM, Qin ZH, Huang ZP, Huang JY, Chiles TC, Carnahan D, Kempa K, Ren ZF (2005) *Nat Methods* 2:449–454.
- Kam NWS, O'Connell M, Wisdom JA, Dai HJ (2005) *Proc Natl Acad Sci USA* 102:11600–11605.
- Kouklin NA, Kim WE, Lazarek AD, Xu JM (2005) *Appl Phys Lett* 87:173901–173903.
- Martinez J, Yuzvinsky TD, Fennimore AM, Zettl A, Garcia R, Bustamante C (2005) *Nanotechnology* 16:2493–2496.
- Lin Y, Taylor S, Li HP, Fernando KAS, Qu LW, Wang W, Gu LR, Zhou B, Sun YP (2004) *J Mat Chem* 14:527–541.
- Saito G, Swanson JA, Lee KD (2003) *Adv Drug Delivery Rev* 55:199–215.
- Chen RJ, Zhang Y, Wang D, Dai H (2001) *J Am Chem Soc* 123:3838–3839.
- Iyer KS, Klee WA (1973) *J Biol Chem* 248:707–710.
- Atassi MZ, Habeeb, AFS, Rydstedt L (1970) *Biochim Biophys Acta* 200:184–187.
- Michalet X, Pinaud FF, Bentolila LA, Tsay JM, Doose S, Li JJ, Sundaresan G, Wu AM, Gambhir SS, Weiss S (2005) *Science* 307:538–544.
- Dahan M, Levi S, Luccardini C, Rostaing P, Riveau B, Triller A (2003) *Science* 302:442–445.
- Nan XL, Sims PA, Chen P, Xie XS (2005) *J Phys Chem B* 109:24220–24224.
- Arrigo AP, Firdaus WJJ, Mellier G, Moulin M, Paul, C., Diaz-Latoud C, Kretz-Remy C (2005) *Methods* 35:126–138.
- Bratosin D, Mitrofan L, Pali C, Estaquier J, Montreuil J (2005) *Cytometry A* 66:78–84.
- Moore A, Donahue CJ, Bauer KD, Mather JP (1998) *Methods Cell Biol* 57: 265–278.
- Lacal JC, Perona R, Feramisco J (1999) *Microinjection* (Birkhauser, Basel).
- Babcock HP, Chen C, Zhuang XW (2004) *Biophys J* 87:2749–2758.
- Luby-Phelps K (2000) *Int Rev Cytol* 192:189–221.