



La **Bibliothèque** de l'



ÉCOLE POLYTECHNIQUE
FÉDÉRALE DE LAUSANNE

au **Rolex Learning Center**

Enfin dévoilée Revealed, at last

David.Aymonin@epfl.ch

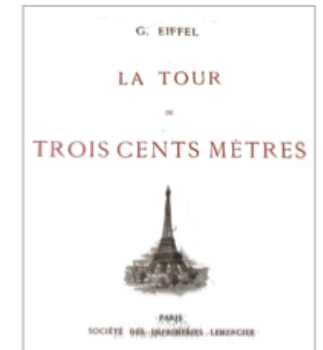
et toute l'équipe de la Bibliothèque de l'EPFL
RLC, Vendredi 28 mai 2010

Once upon a time



From the first dream ...

Le centre de connaissance
de l'EPFL



Une ambition au service de l'innovation



... to the Real Rolex Learning Center

Aims / Context : Who we are

2 Swiss Federal Institutes of Technology



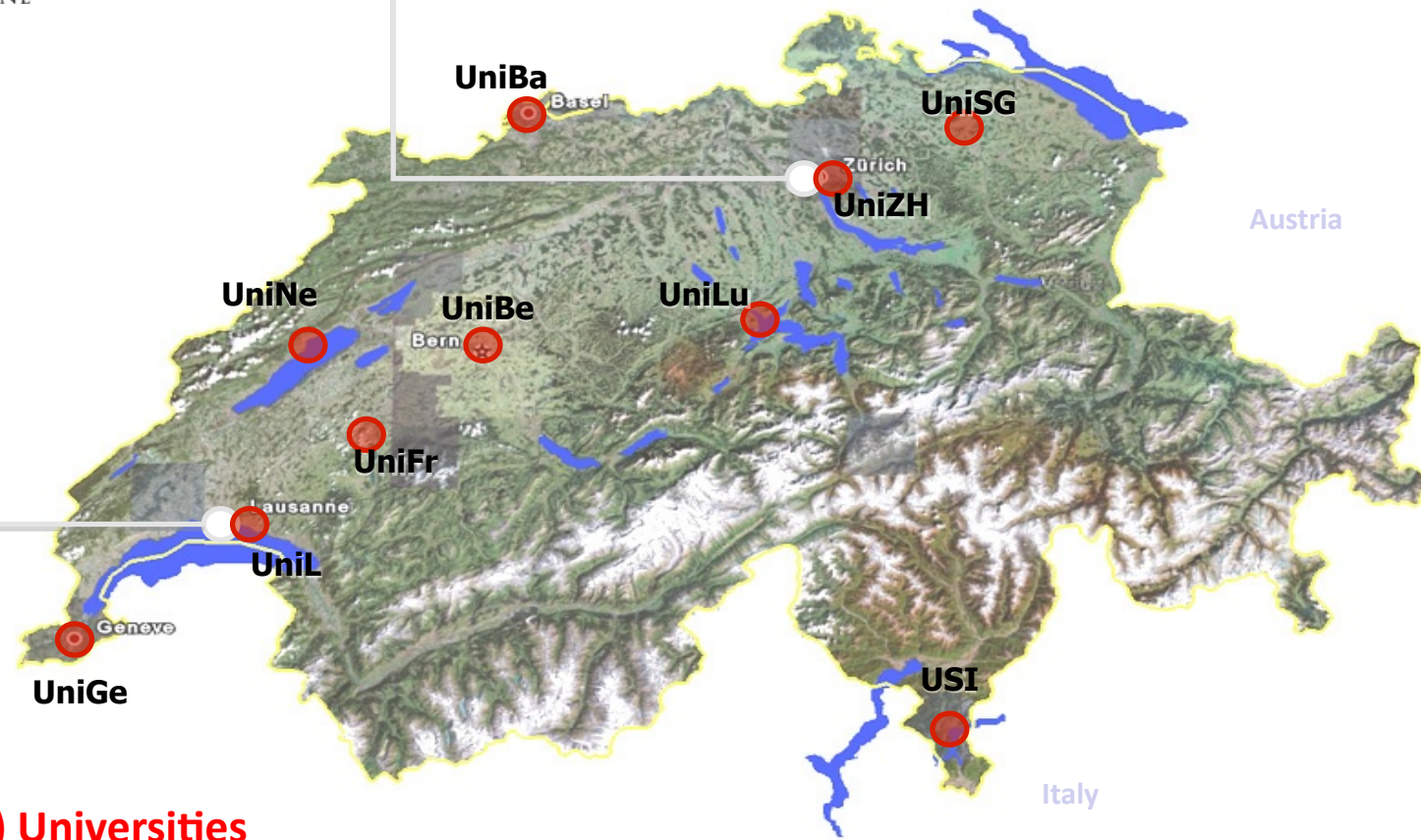
Eidgenössische Technische Hochschule Zürich
Swiss Federal Institute of Technology Zurich

Germany

France

Austria

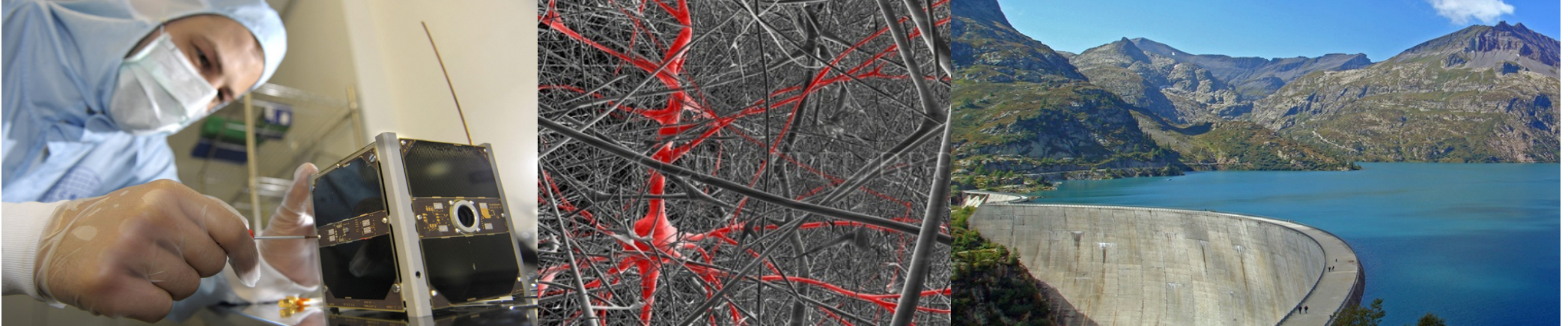
Italy



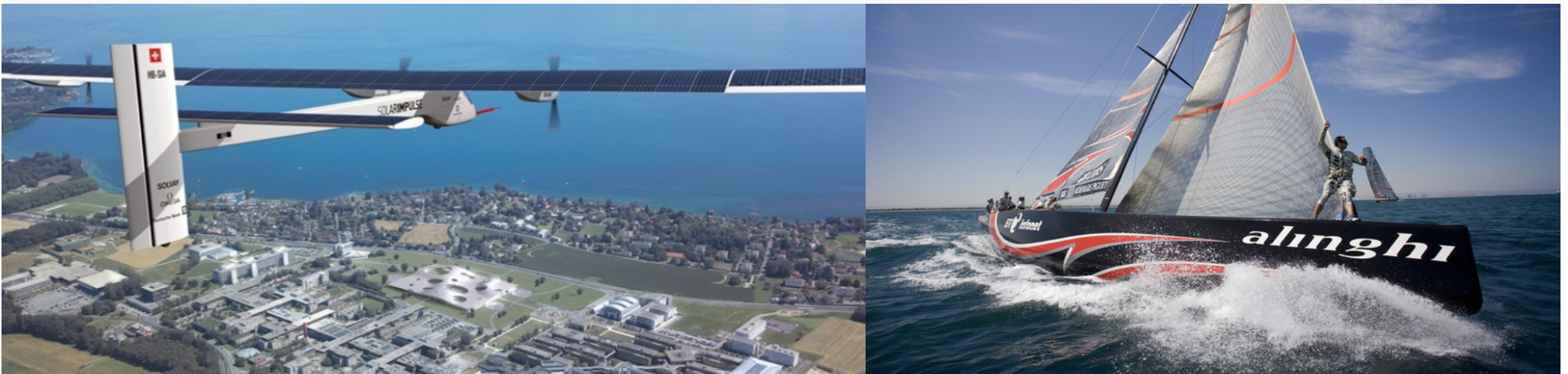
10 Cantonal (state) Universities
+ several local institutes of higher learning (HES)

A local campus... gone global !

5'000 Ba+Ma students – 1'600 PhDs – 270 professors – 3'500 staff

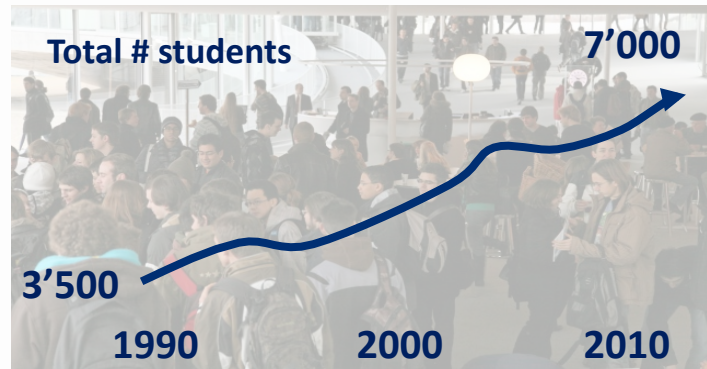


112 nationalities – 60% faculty from abroad – 40% foreign students



300 M€ funding + 100 M€ grants & contracts

An ever-expanding campus



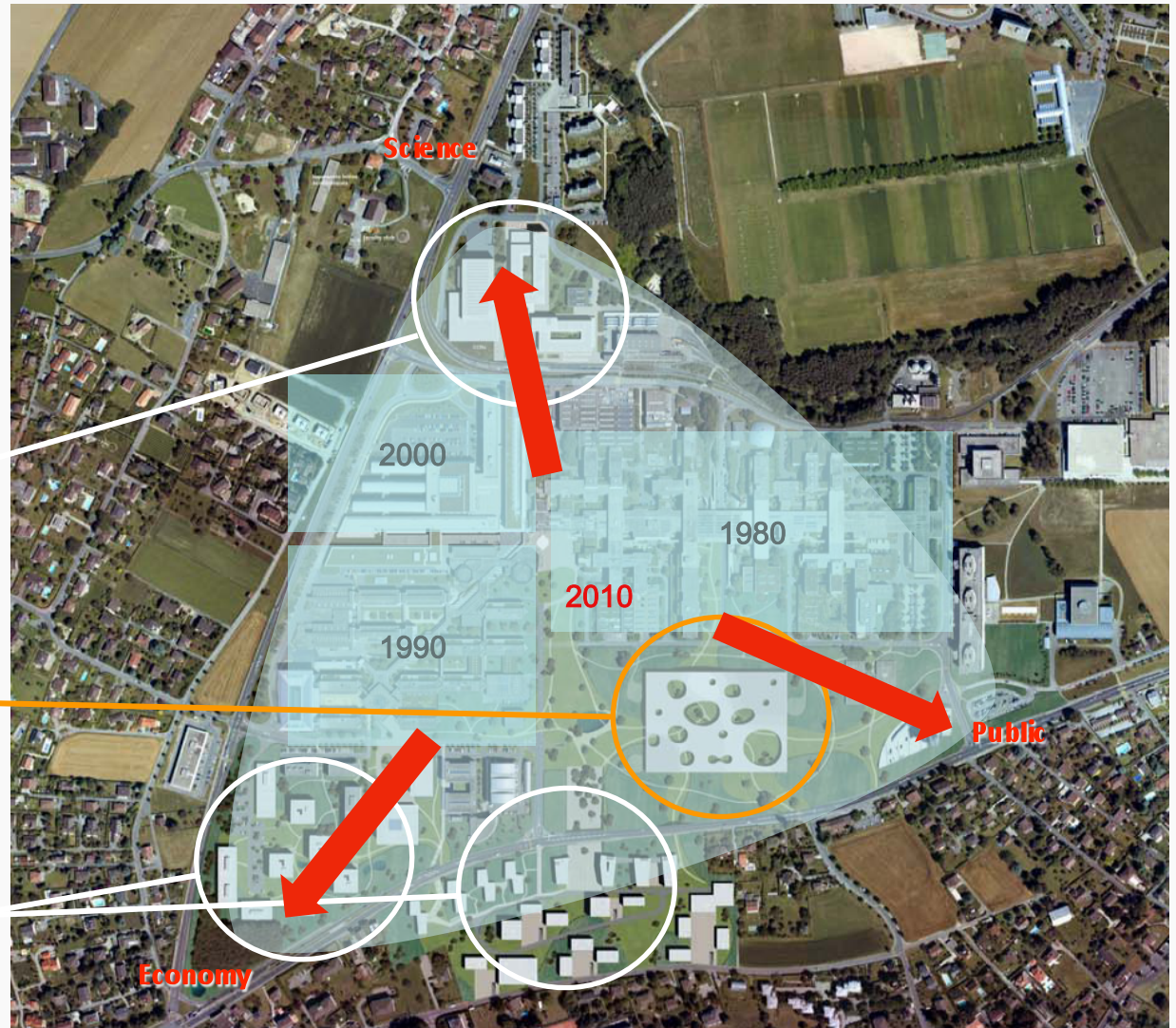
Conference centre (2012)



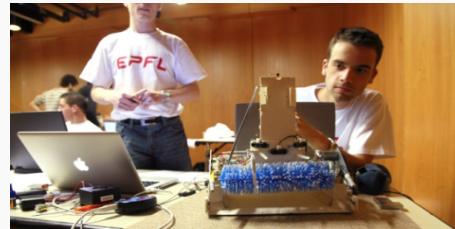
Rolex Learning Center (2010)



Business centre, hotel, housing...



Teaching models evolve: the Bologna Equation



problems

exercices

lecture

technical tools (lab)

computers

time

open mind,
interdisciplinarity

space (group work)

space (personal work)

space (teaching)

information

information literacy

1 credit =
30 hours student work

Learning is not Virtual. It's physical  Learning Center

Libraries evolve: Learning Centres, Information Commons ...

Sheffield Hallam University
SHARPENS YOUR THINKING

Home Courses University Sheffield News Events Services

The Saltire Centre
Home | Our Services | The Building | Tours & Events

Our Services

Services for Students

- Support Services
- The Base

Learning centres library resources and IT

Learning centres

Library resources

IT services and facilities

Accessibility

External users

Learning centres

We have a learning centre each campus choice of study spaces for individual learning. You can book group study rooms in advance. There's also somewhere to take a break from your studies.

In our learning centres you'll be able to:

- academic library resources
- electronic information resources

The University of Sheffield
Information Commons

Study at Sheffield For Current Students For Staff Our Research Departments & Services Useful Links News & Events

You are here: Home / Departments / Information Commons / Visitors

Home Information for Students Information for Staff Information for Visitors News and Events

What do you think of our new site? Updated July 2011

→ Drenpelsweg → Contact en route Zoek [] Print Direct naar

Opleidingen

Faciliteiten

- Centraal Informatie Centrum
- hogeschoollcrant
- Punt restaurant
- Xplora boeken/dictaten computers
- Eurocom draadloos internet werkplekken winkel
- repro
- beveiliging
- studerend met functiebeperking
- ankomende studenten

> Avans Hogeschool, HBO Opleidingen > Opleidingen > Faciliteiten > Xplora

Xplora

Xplora is een onderdeel van het eigentijdse onderwijsconcept van Avans Hogeschool. Het ontwikkelen van competenties staat daarbij centraal. Daarom biedt Xplora de student moderne faciliteiten, zoals:

- supersnelle pc's met toegang tot: hogeschoolnetwerk (ook draadloos), applicaties, elektronische leeromgeving (Blackboard) en internet
- werkplekken (reserveerbaar via een online reserveersysteem): individueel, groepen, vergaderruimten, stilteplekken, voorzieningen voor mindervaliden
- informatie: fysiek (boeken, tijdschriften, cd-roms etc.) en digitaal (internet en speciale databanken)
- multimediatechnologieën, zoals o.a. een televisie-opnamestudio
- randvoorzieningen: kopieerapparaten, plotters, scanners, printers, whiteboards, smartboards etc.
- ontmoetingsplekken: aantrekkelijke gebouwen met leestafels, meeting points, koffiecorners en een internetcafé

support located through

Xplora

Transforming learning experiences

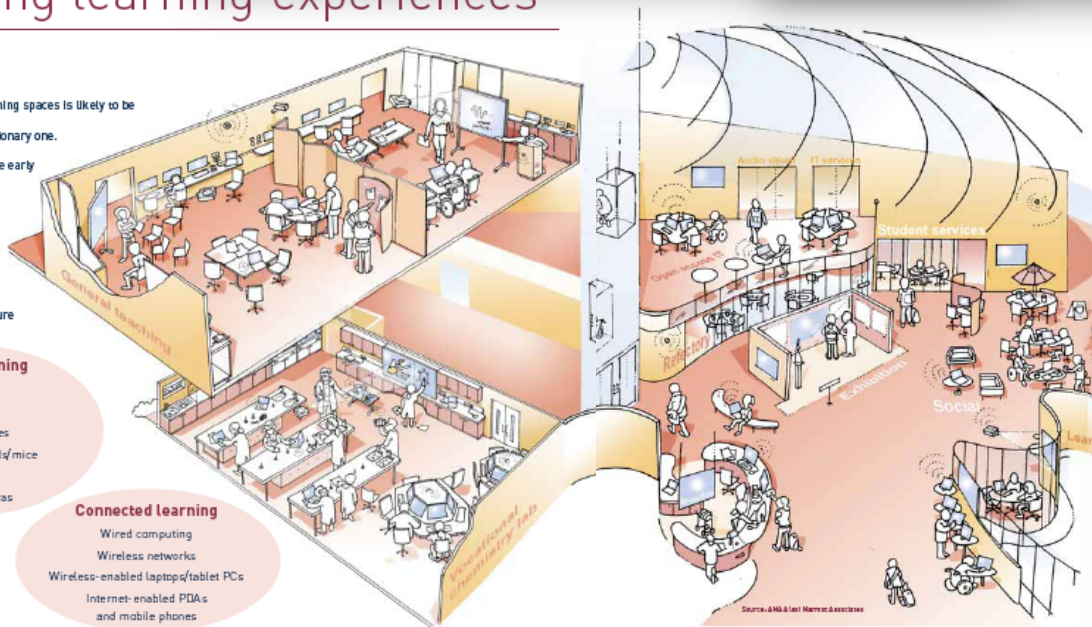
Embedding technology into learning and teaching spaces is likely to be an evolutionary process rather than a revolutionary one. Considering technological requirements at the early stages of planning will ensure that maximum benefit can be obtained from the investment. Start by establishing your pedagogical aims, then review the design and the technological infrastructure in the whole institution, to ensure that your aims can be achieved.

Mobile learning

- Tablet PCs
- Laptops
- Mobile phones
- Wireless keyboards/mice
- PDAs
- Digital cameras

Connected learning

- Wired computing
- Wireless networks
- Wireless-enabled laptops/tablet PCs
- Internet-enabled PDAs and mobile phones



Visual and interactive learning

- Video conferencing
- Video streaming
- Image projection
- Interactive whiteboards
- Voting devices

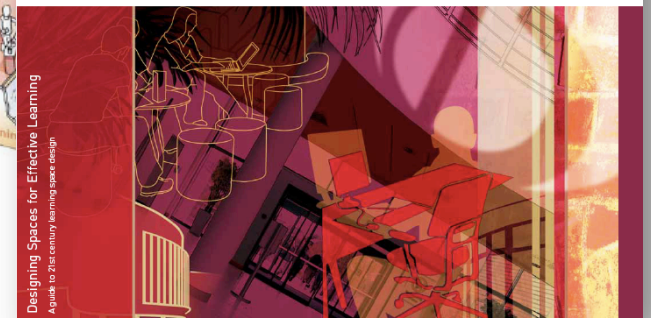
Supported learning

- Assistive technologies
- Accessible USB ports
- Audio-visual prompts
- Video recording facilities

JISC

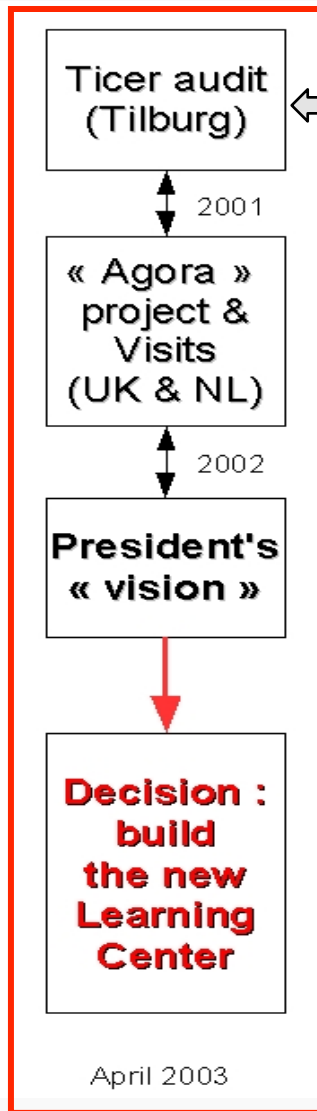
Designing Spaces for Effective Learning

A guide to 21st century learning space design



Time frame

Project Development and Planning : Stage 1

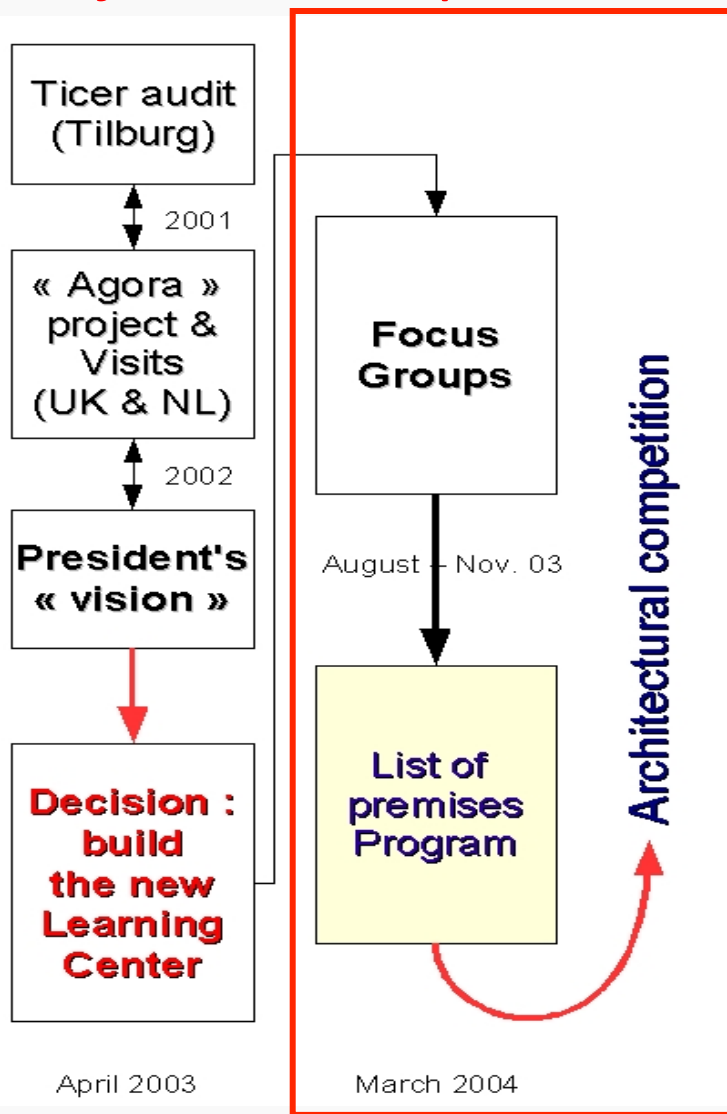


Late 90's : budget cuts + library Crisis

Vision :

create a place for living and studying,
for students mainly but also for researchers and
people from outside as well,
including a library, work areas, cafes and restaurants,
facilities for various events, ...

Project Development and Planning : Stage 2



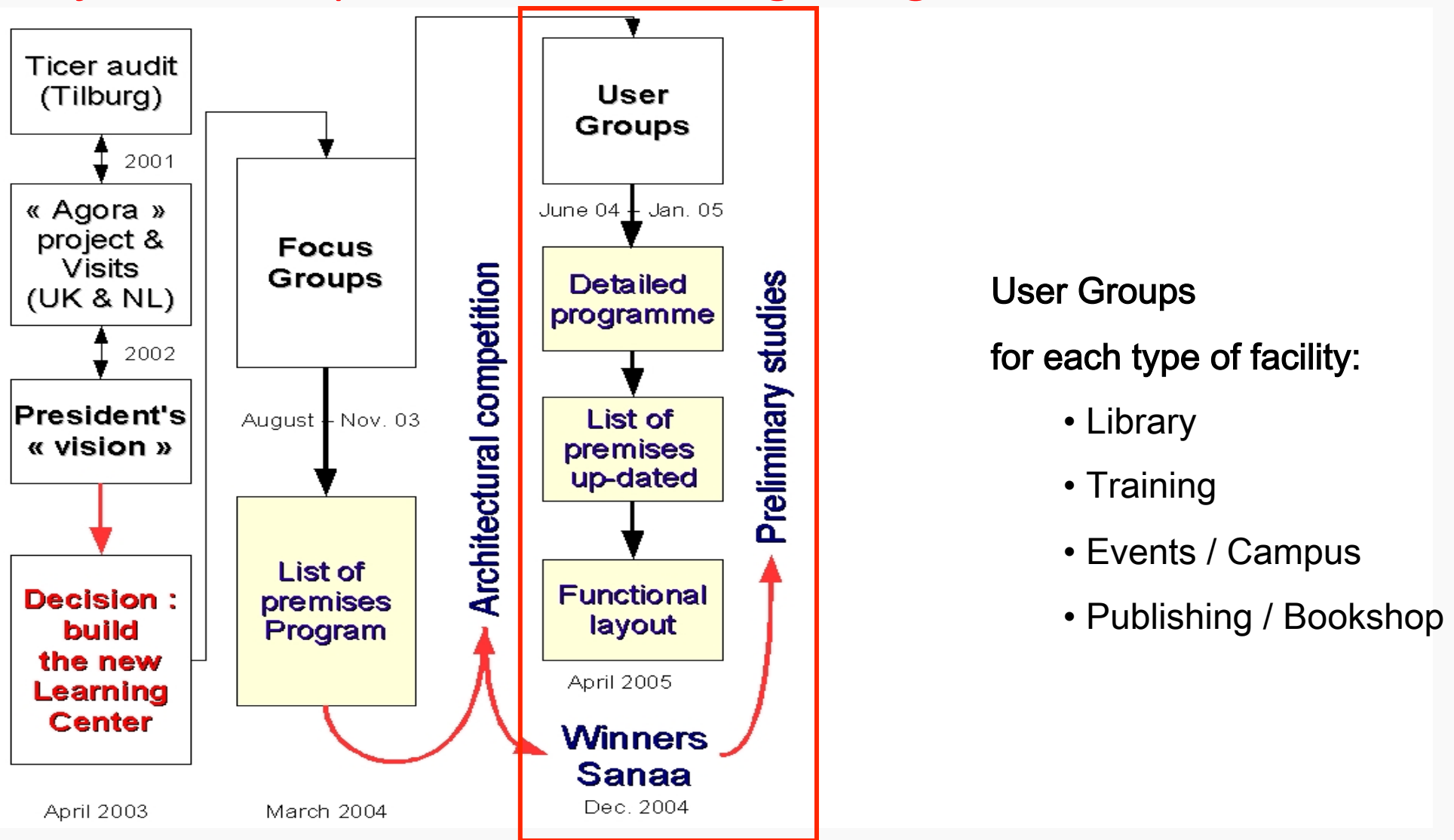
Focus groups' goals :

- identify the degree of acceptance of the intended reforms (teaching methods and scientific information)
- work out the programme for the Learning Center
- sketch out the changes to be made to the EPFL campus in general

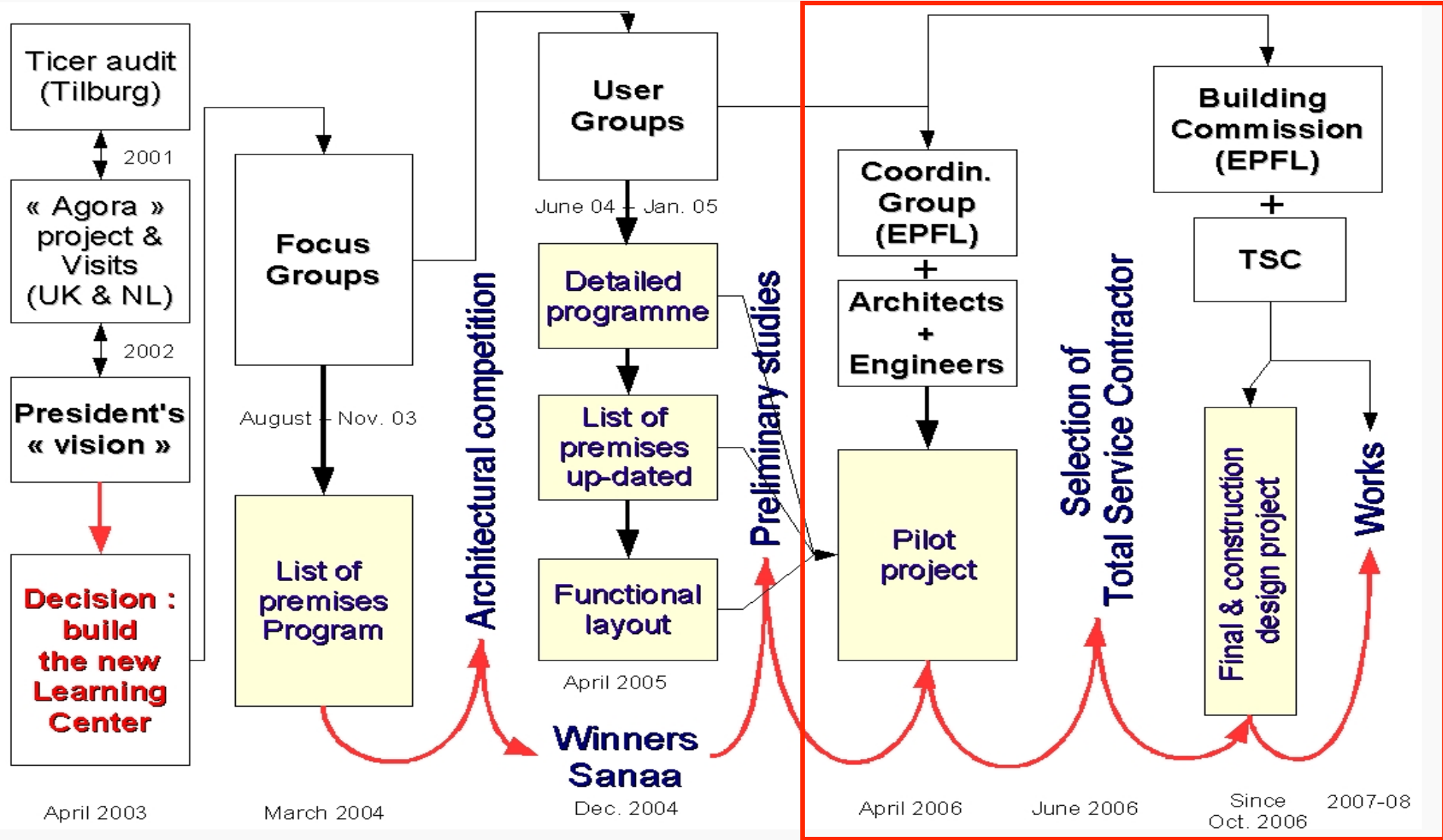
Conclusion :

the Learning Center project should be expanded to a *Campus for Tomorrow*, of which the *Library of the Future* is one element

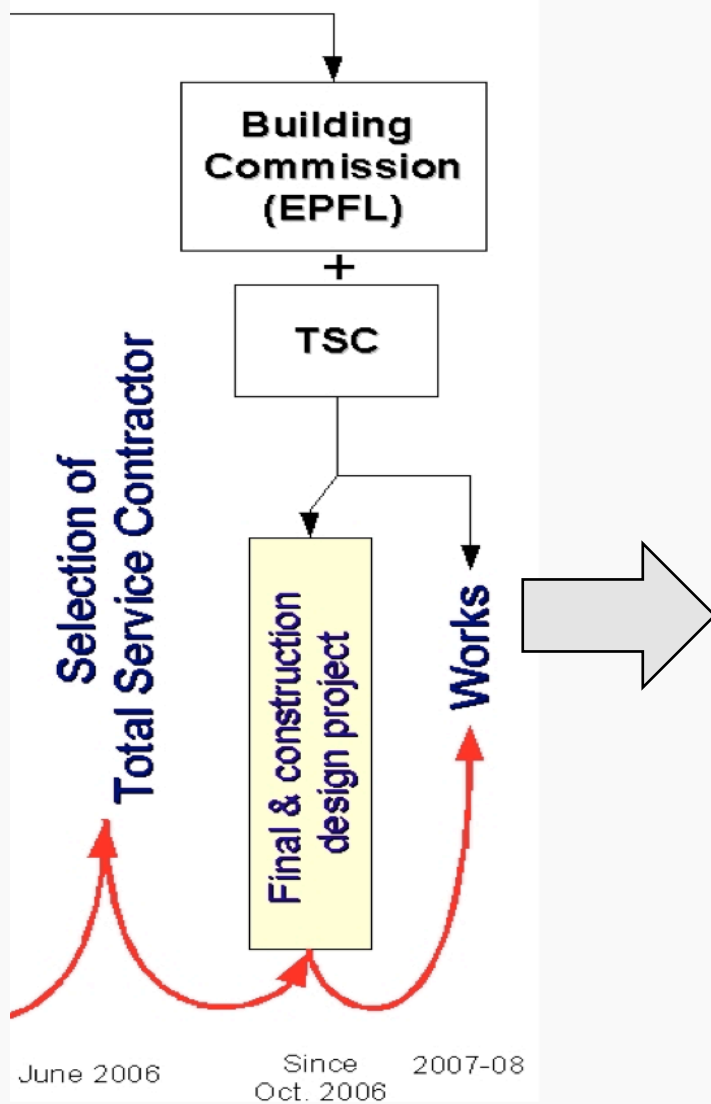
Project Development and Planning : Stage 3



Project Development and Planning : Stage 4



Project Building : Stage 5



Construction Permit : Jul 2007

Construction work : Jul 2007 – dec 2009

Furnishing : Oct 2008 – dec 2009

Opening : 22 Feb 2010

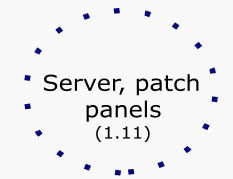
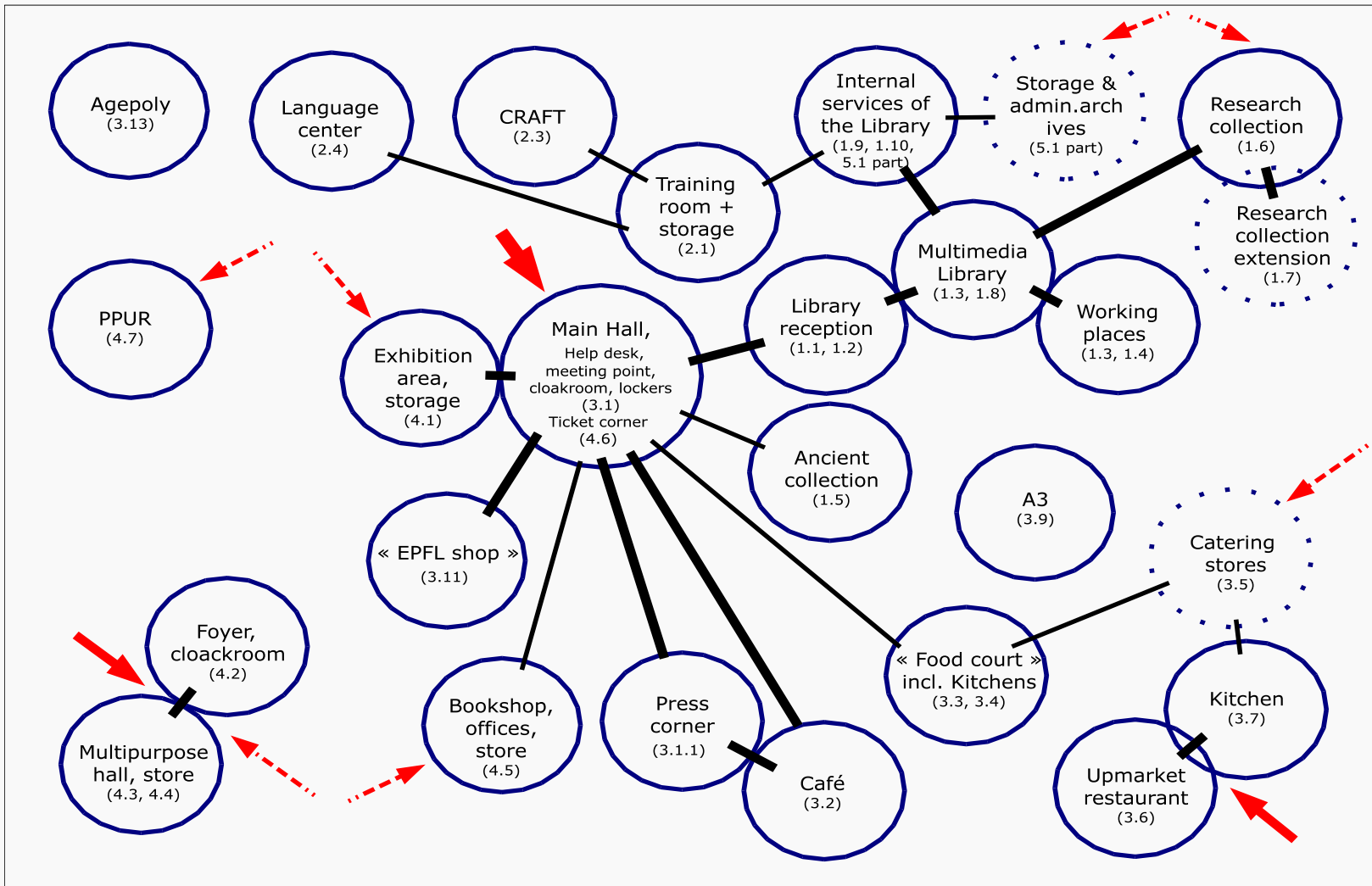
Official Inauguration : 27 May 2010

Initial concept

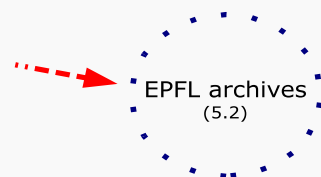
Architectural competition

Functional layout

Schéma fonctionnel



Spread (everywhere)



- well connected
- connected
- public access
- delivery access (poss. by elevator)
- in basement

PROGRAM

teaching space

student + alumni
associations

career centre

bookshop

bank

MAIN
ENTRANCE

MULTI-PURPOSE
HALL

working space
(830 seats)

LIBRARY

welcome desk

newspapers

café

CATERING

self-service restaurant

Collections
Ba + general public

main desk

rare books

restaurant

Collections
Ma + research level

library offices

OFFICES

PPUR
EPFL Press

CRAFT

space for
group work

+ underground : movable stacks, parking, storage...

Initial architectural program

1. Library / Scientific information services

Information desk, multimedia library, research collection, 700 student working places, 40 librarian working places and offices : 6'160 m²

2. Training and teaching

Training rooms, CRAFT, language center : 1'150 m²

3. Life

Main hall, help desk, café, restaurants (self-service and up-market), alumni and student lounge, shop : 1'875 m²

4. Culture

Exhibitions, multipurpose hall, bookshop, university press : 1'690 m²

5. Technical spaces

Delivery service, EPFL archives, technical rooms, car park : 3'500 m²

Program and competition

- Abalos & Herreros, Madrid, Spain
- Ateliers Jean Nouvel, Paris, France
- Diller Scofidio + Renfro, New York, USA
- Herzog & De Meuron, Basel, Switzerland
- Livio Vacchini - Eloisa Vacchini, Locarno, Switzerland
- Mecanoo Architecten, Delft, The Netherlands
- OMA Stadebouw BL, Rotterdam, The Netherlands
- Pierre Du Besset & Dominique Lyon, Paris, France
- Sanaa, Kazuyo Sejima + Ryue Nishizawa, Tokyo, Japan
- Valerio Olgiati, Zurich, Switzerland
- Xaveer de Geyter, Brussels, Belgium
- Zaha Hadid, London, United Kingdom

architects selection

FEB-NOV 2004

189 projects submitted
12 Selected

Overview of the 12 projects

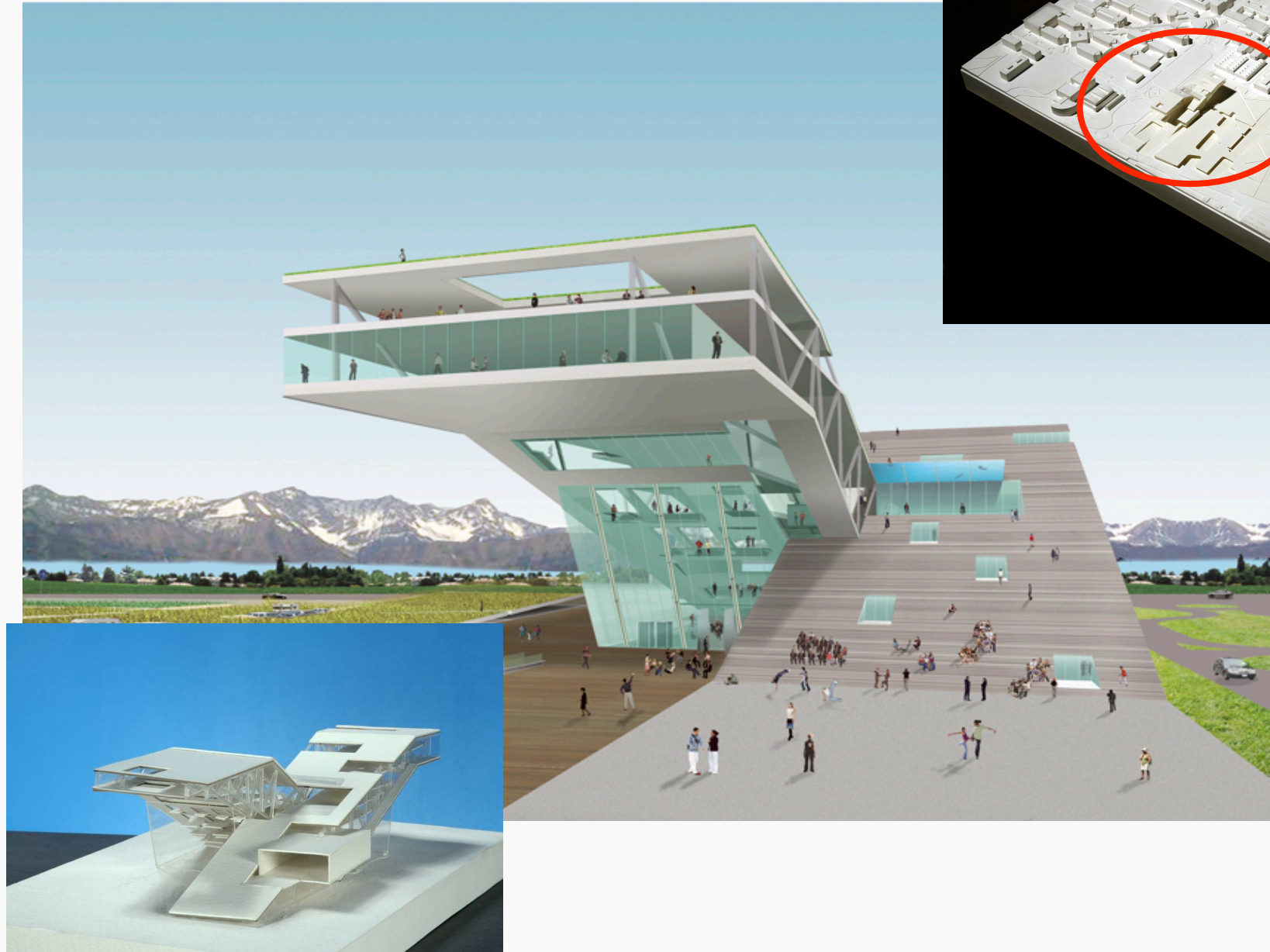
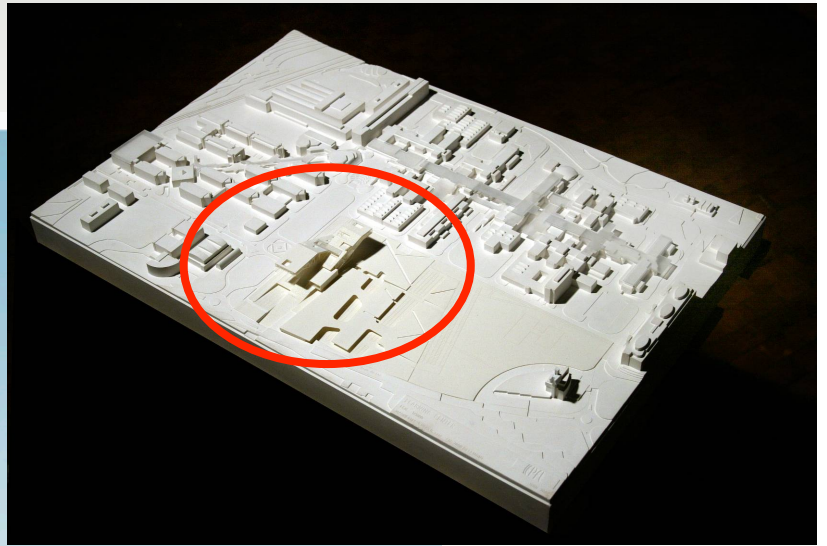
Abalos & Herreros, Madrid



Ateliers Jean Nouvel, Paris



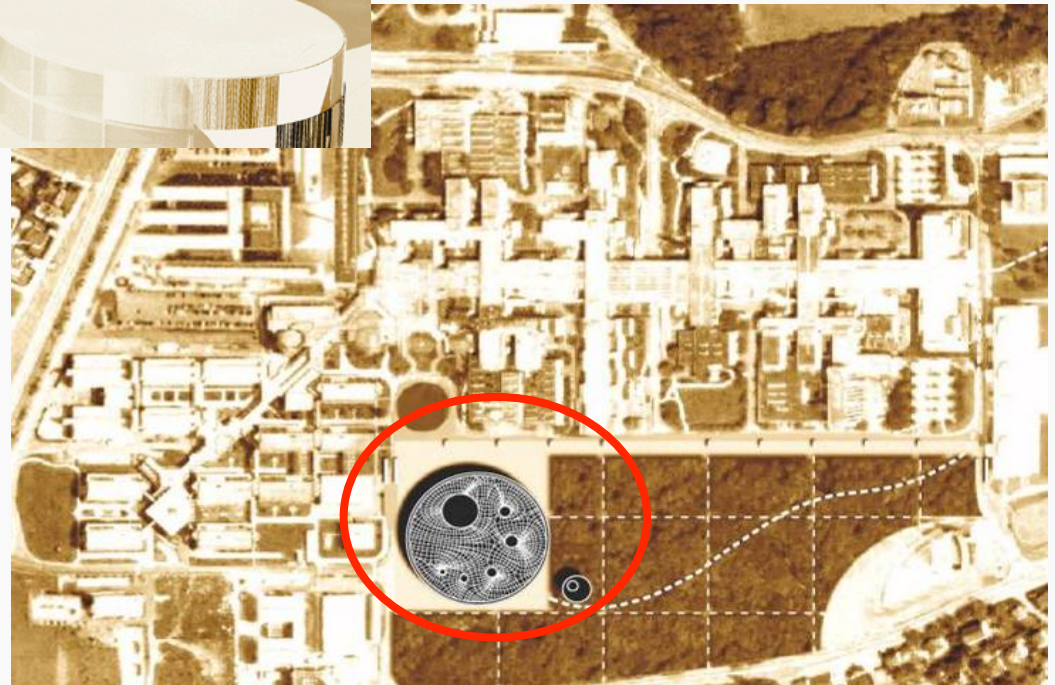
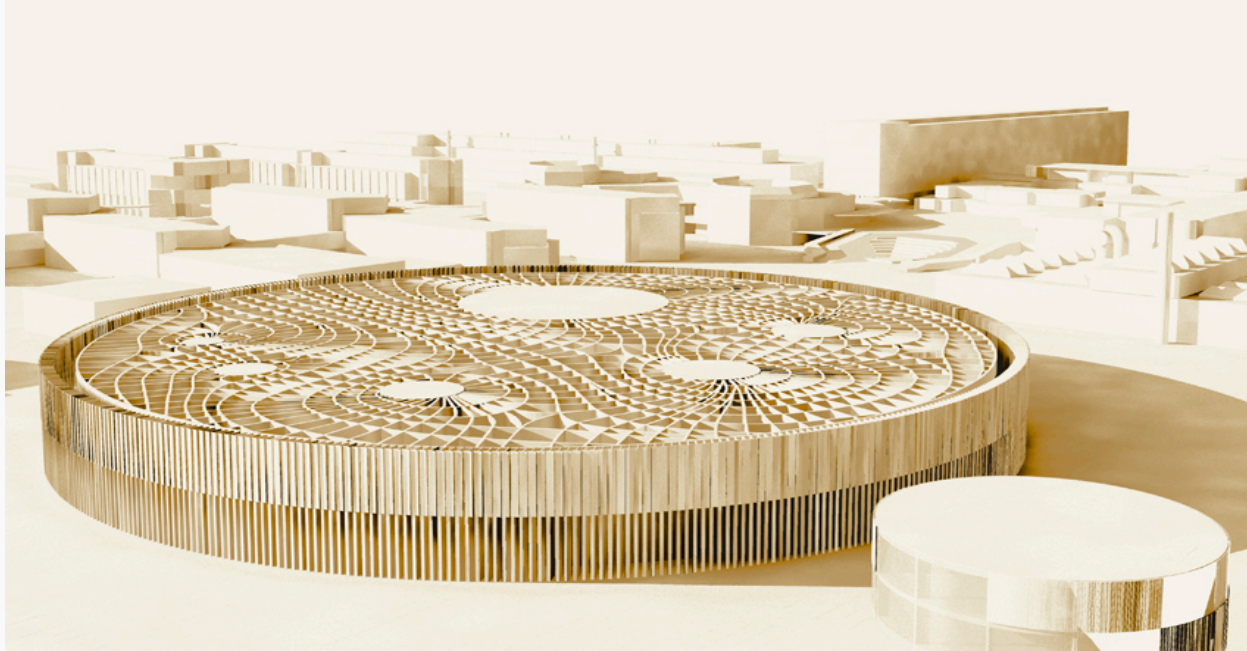
Diller Scofidio + Renfro, New-York



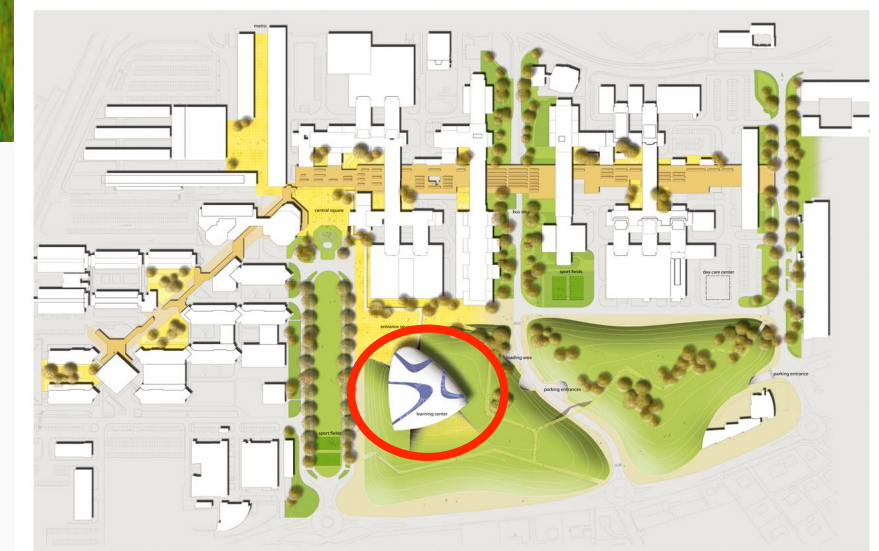
Herzog & Demeuron, Basel



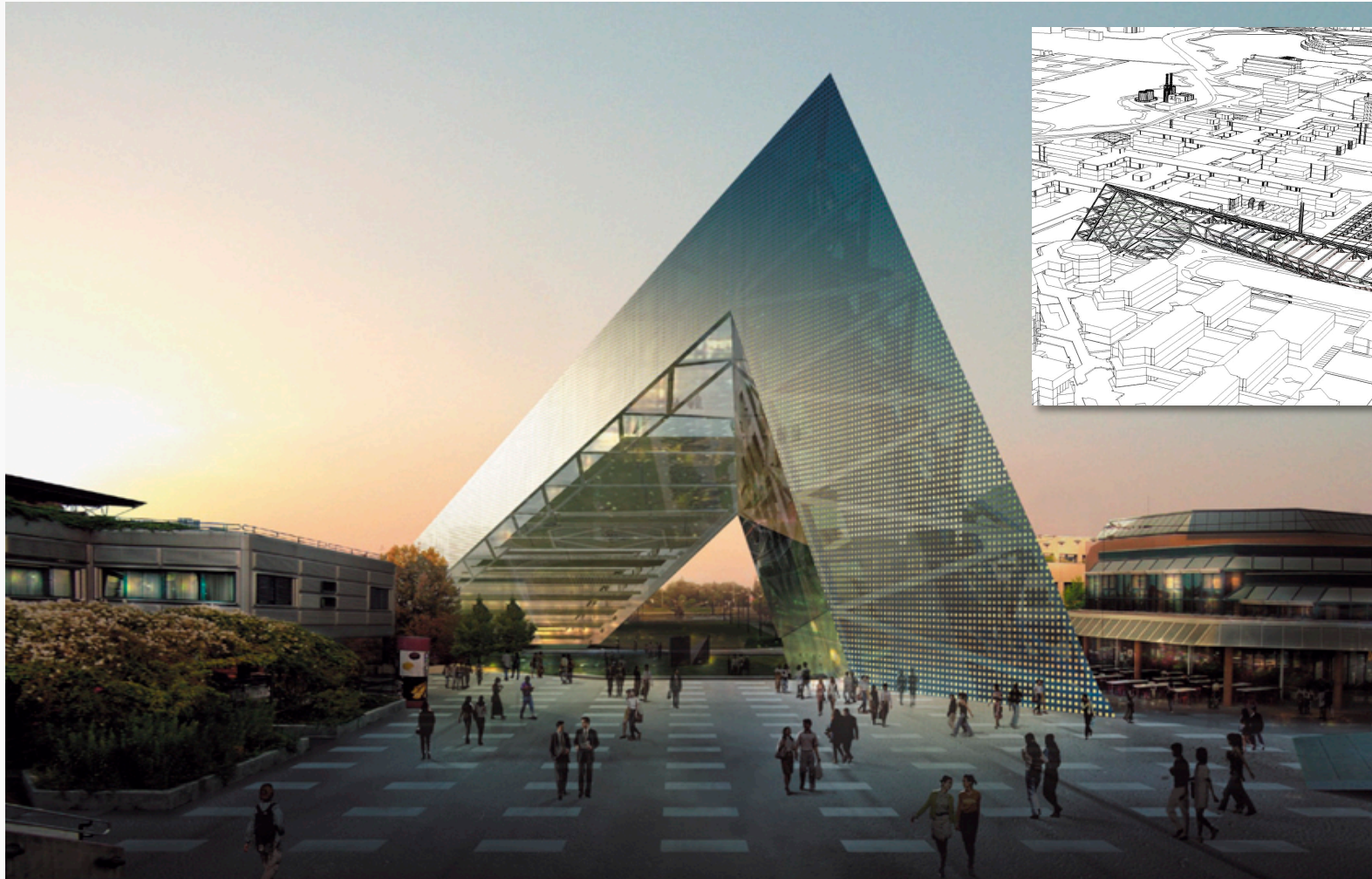
Livio + Eloisa Vacchini, Locarno



Mecanoo Architecten, Delft



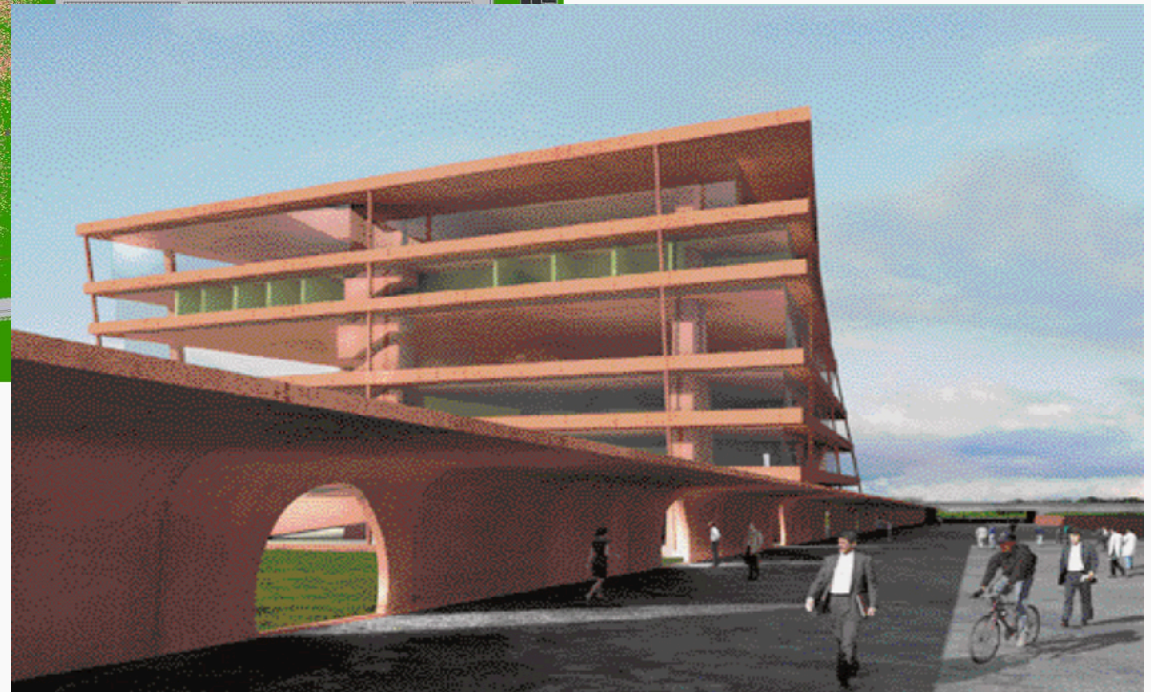
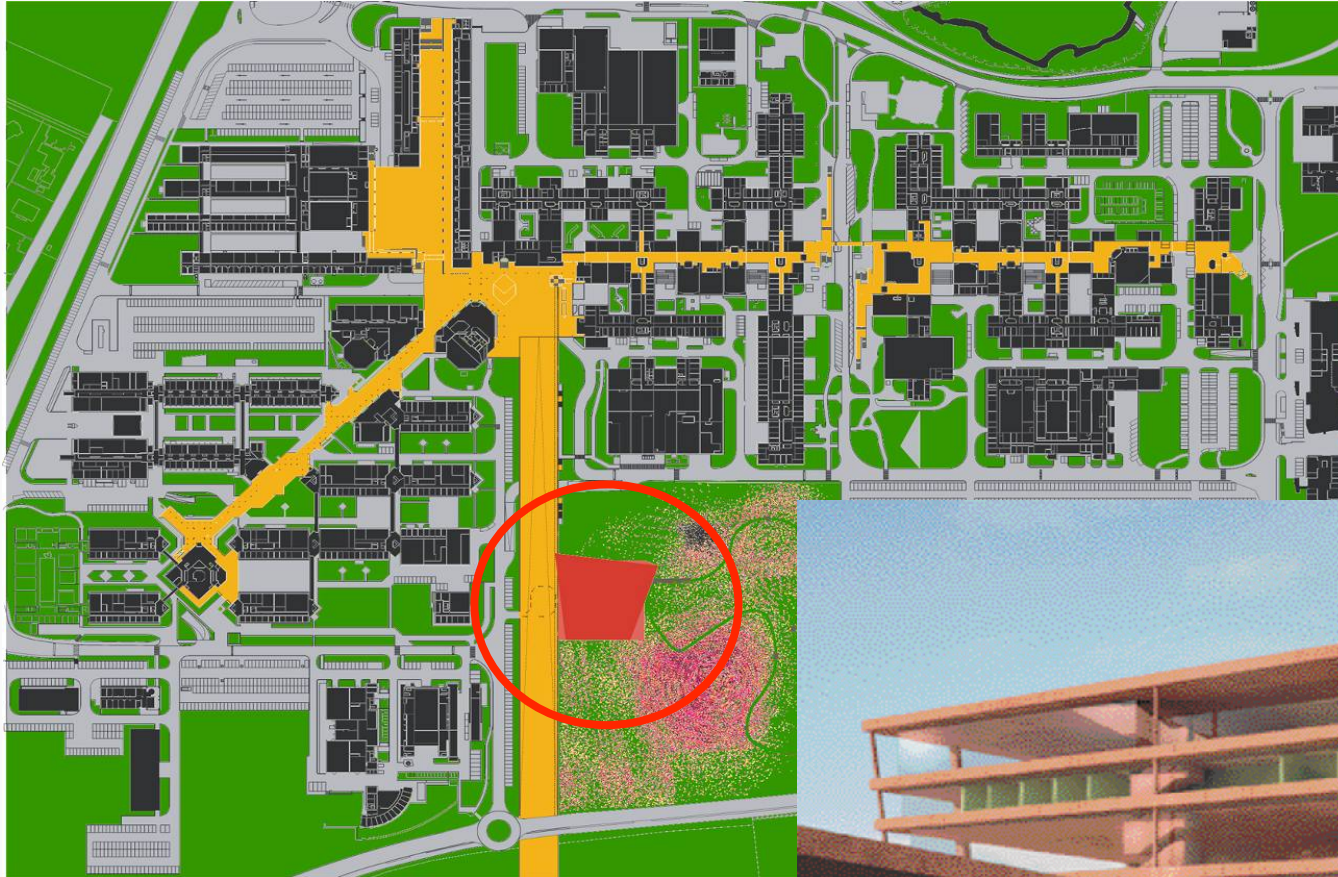
OMA Stadbouw BL, Rotterdam



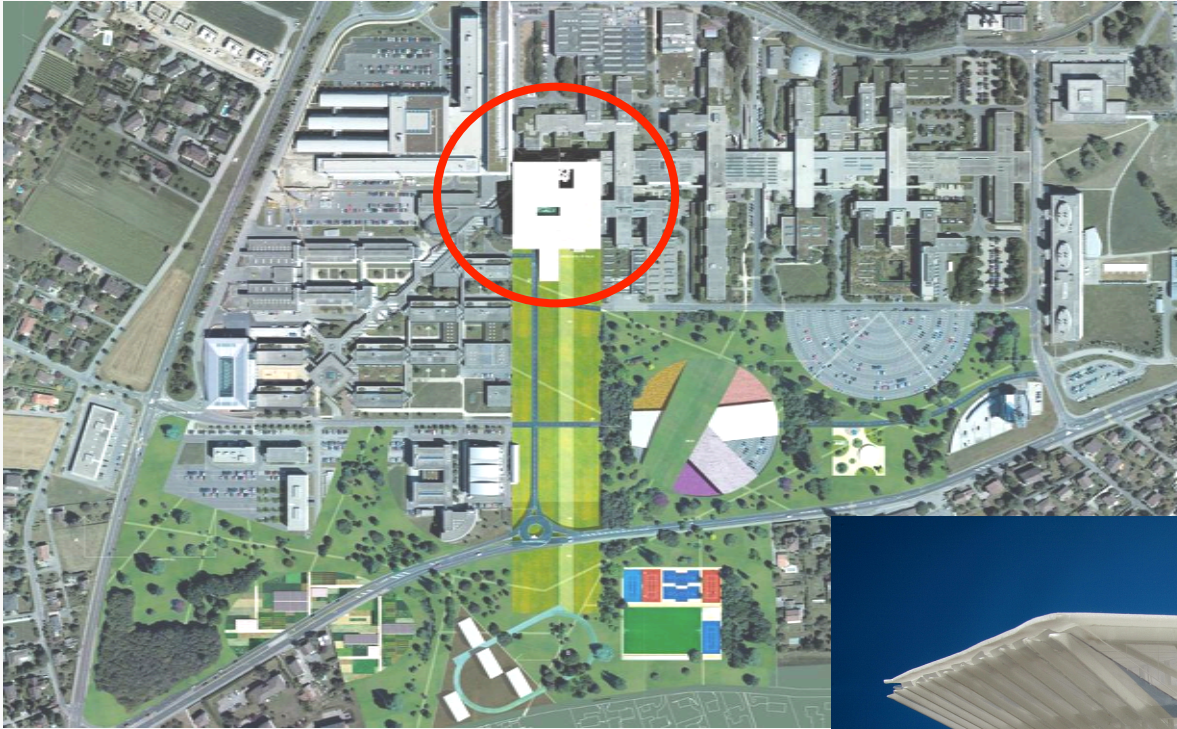
Pierre Du Besset & Dominique Lyon, Paris



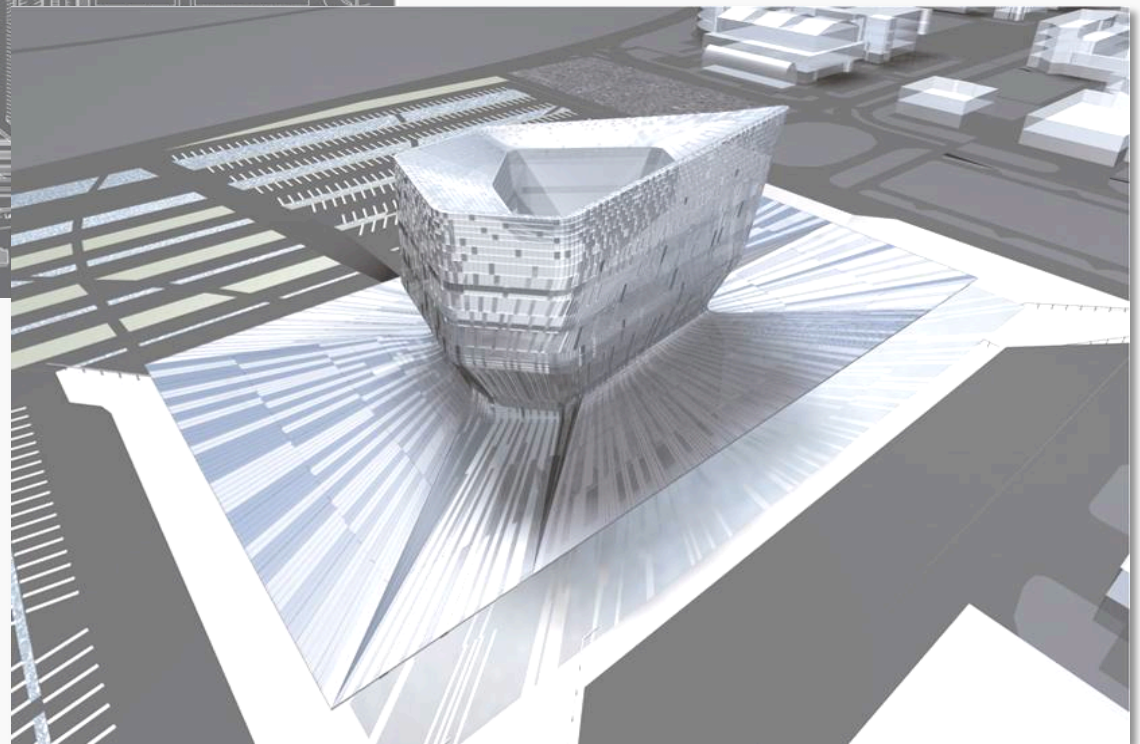
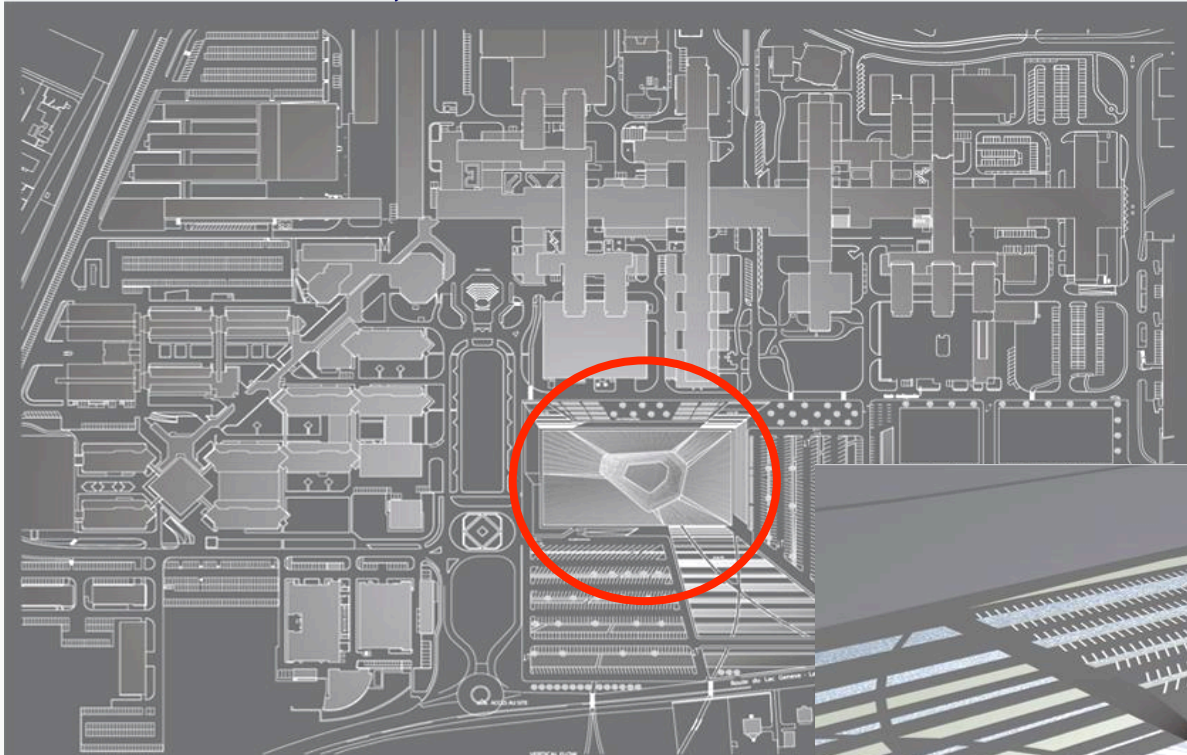
Valerio Olgiati, Zurich



Xaveer De Geyter, Bruxelles



Zaha Hadid, London



Projects evaluation

Architects	Mel Collier	Marie-Françoise Bisbrouck
1. Du Besset-Lyon		
2. Vacchini		
3. Abalos and Herreros		
4. SANAA		
5. Herzog & De Meuron		
6. OMA (Rem Koolhaas)		
7. De Geyter		
8. Mecanoo		
9. Ateliers Jean Nouvel		
10. Diller Scofidio		
11. Olgiatti		
12. Zaha Hadid		

And the winner is

...The project offers an interesting prolongation of and analogy with the philosophy adopted during the first stage of the EPFL's construction : ***importance of itinerary, movement, interior courtyards with different surroundings, atmospheres, richness of vegetation, uniqueness and unity whilst still creating diversity...***

The proposed programme offers a new living space, opens up the possibility of new teaching approaches, everything being integrated into one single building as place of assembly and breeding-ground for **enriching encounters and synergies...**



THE
PRITZKER
ARCHITECTURE
PRIZE
2010

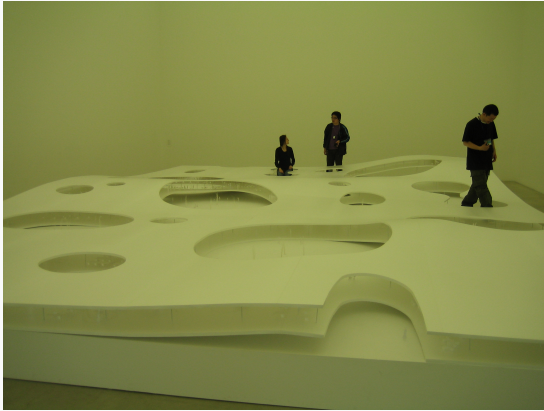
PRESENTED TO
KAZUYO SEJIMA AND RYUE NISHIZAWA



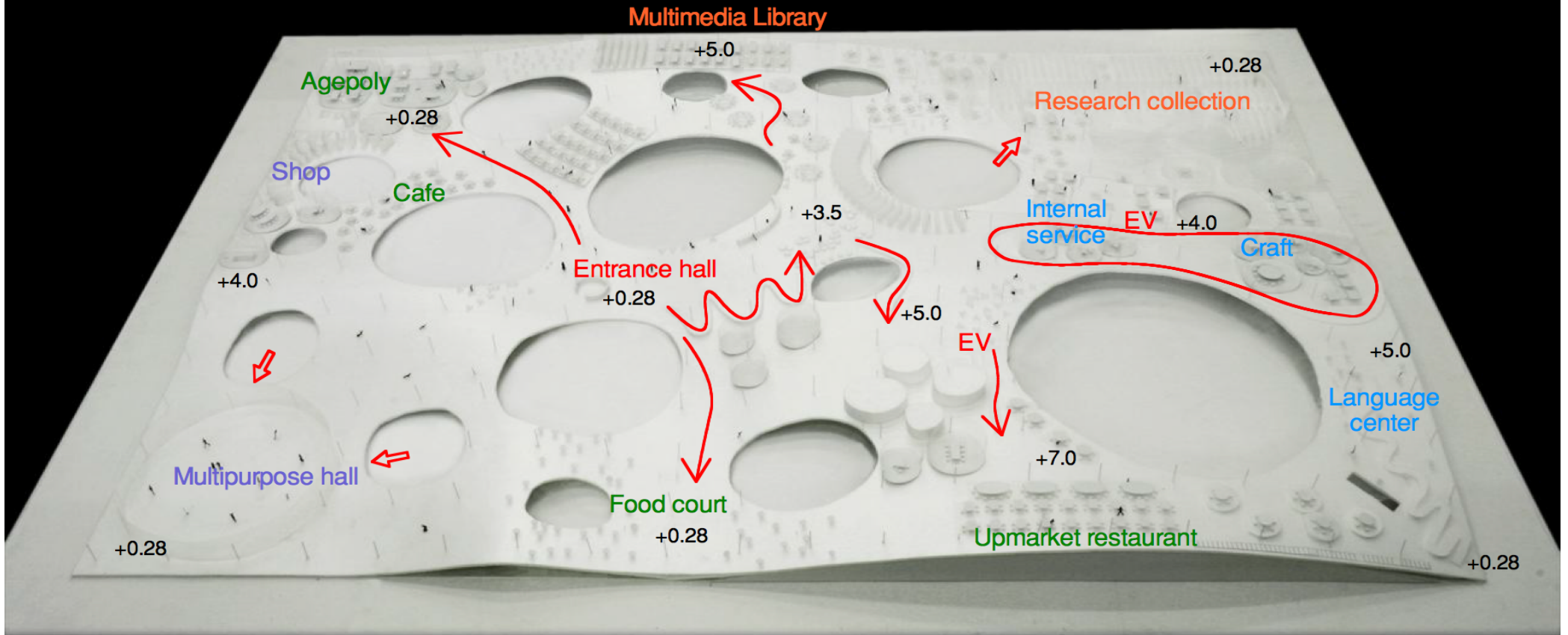
Ryue Nishizawa and Kazuyo Sejima
Photo by Takashi Okamoto, Courtesy of SANAA

SPONSORED BY
THE HYATT FOUNDATION

Design and program evolutions

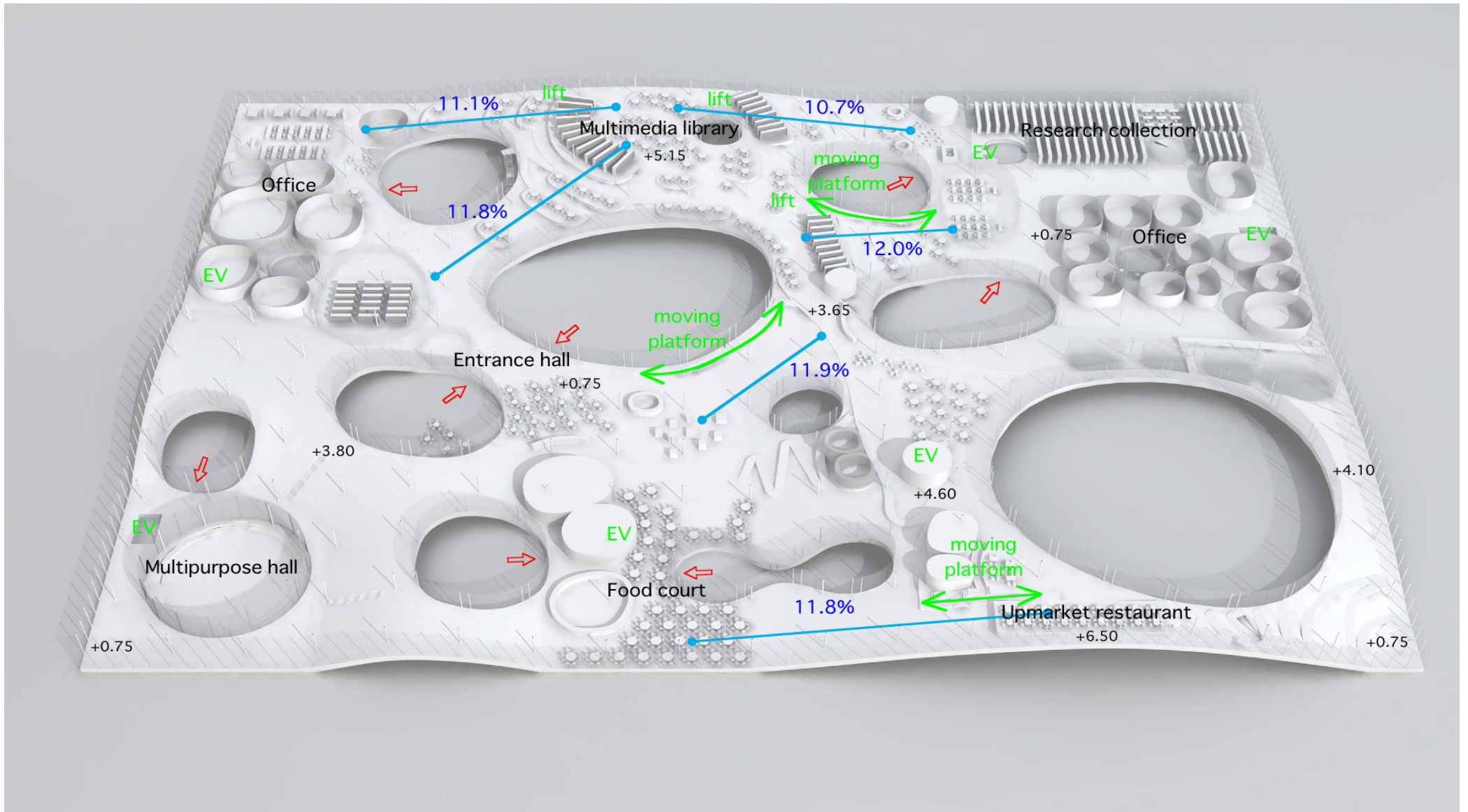


2005

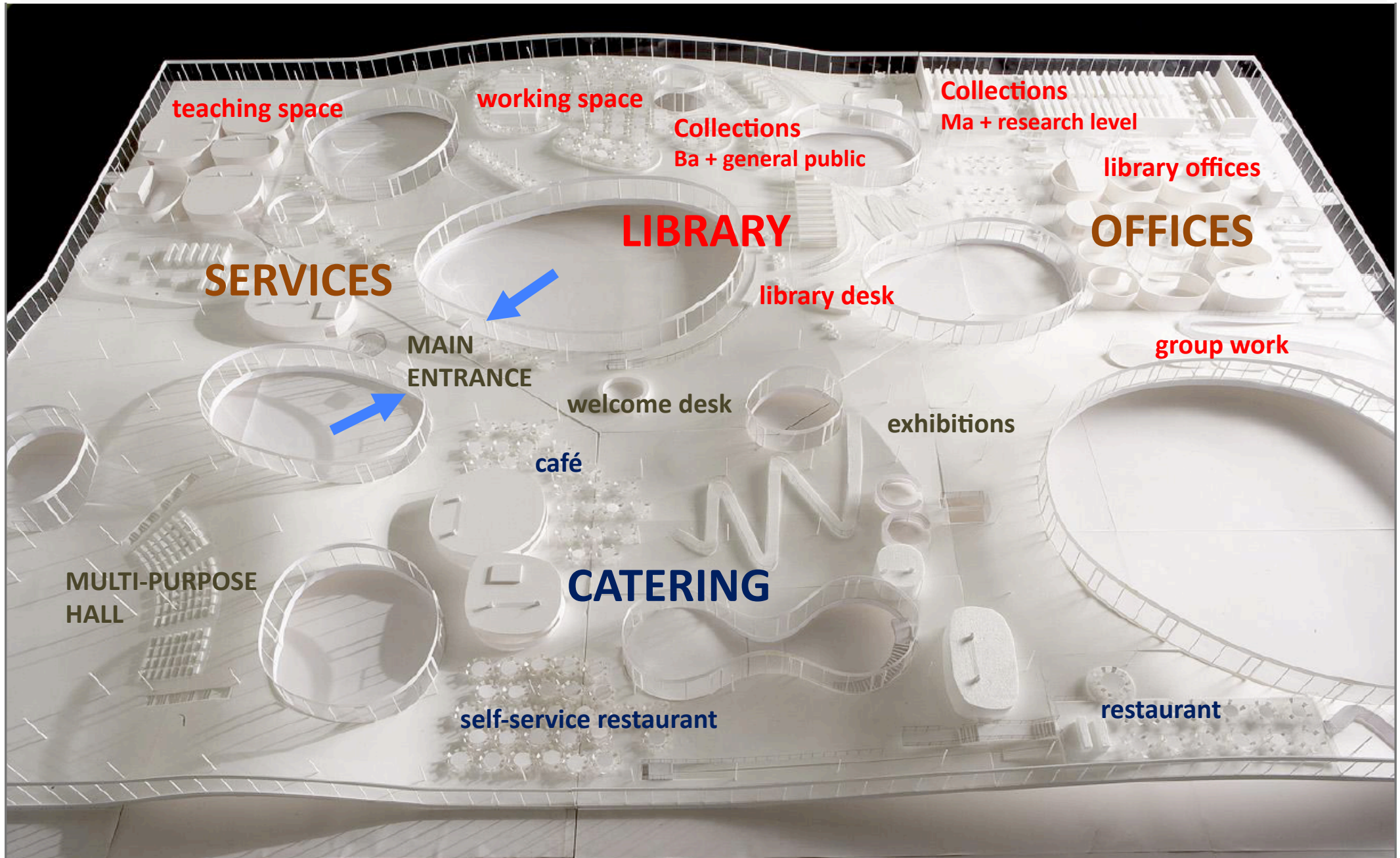


Main Circulation

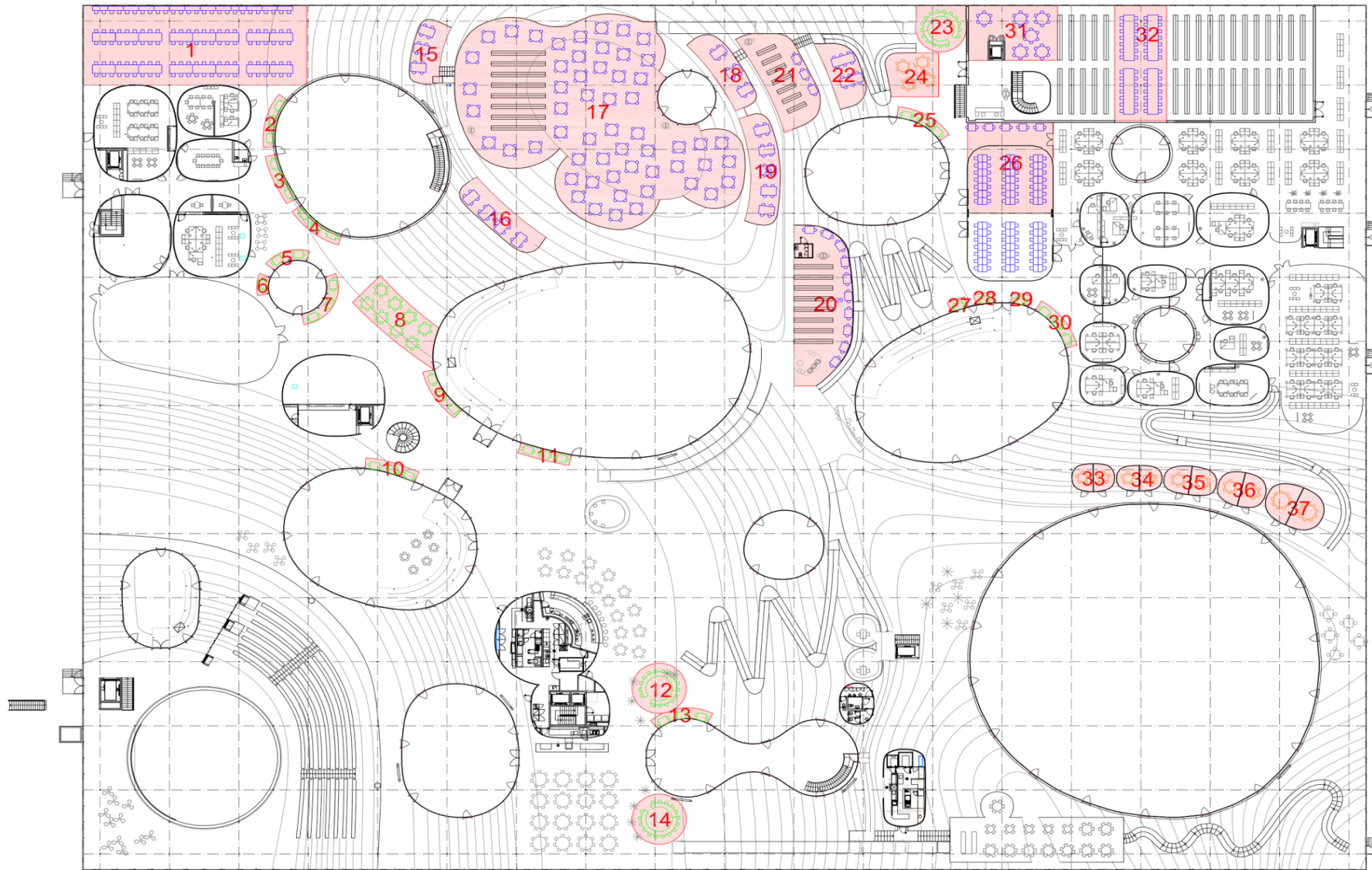
2006-1



2006-2

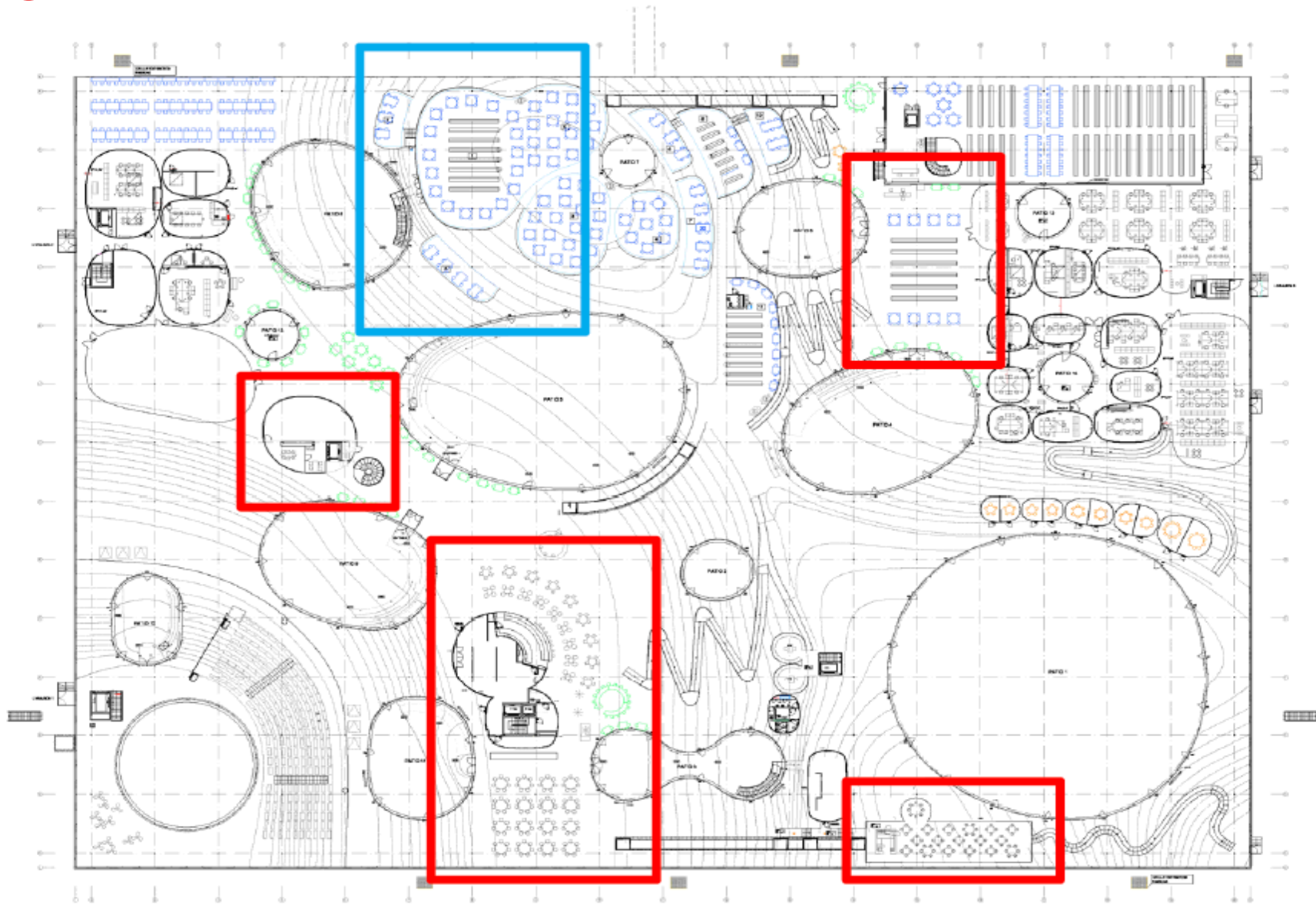


2007



WORKING SPACE AREA
2319.7m²
(TERRACE : 1189.4m²)

2008



Significant Changes

Contracts and agreements

Centre d'études de l'EPFL, Learning Center

Accessibilité aux personnes handicapées

L'Ecole Polytechnique Fédérale et les associations défendant les droits des personnes handicapées communiquent qu'elles ont trouvé un terrain d'entente qui va permettre le démarrage des travaux du Learning Center.



Fribourg, le 27 juin 2007

Pour l'Ecole Polytechnique Fédérale :

Denis Esteiva, av.

Berne, le 5 juin 2007

Pour l'association AGILE :

Dr. Thérèse Stutz Steiger, Présidente

B. Marti
Barbara Marti, secrétaire générale

Lausanne, le 1^{er} juin 2007

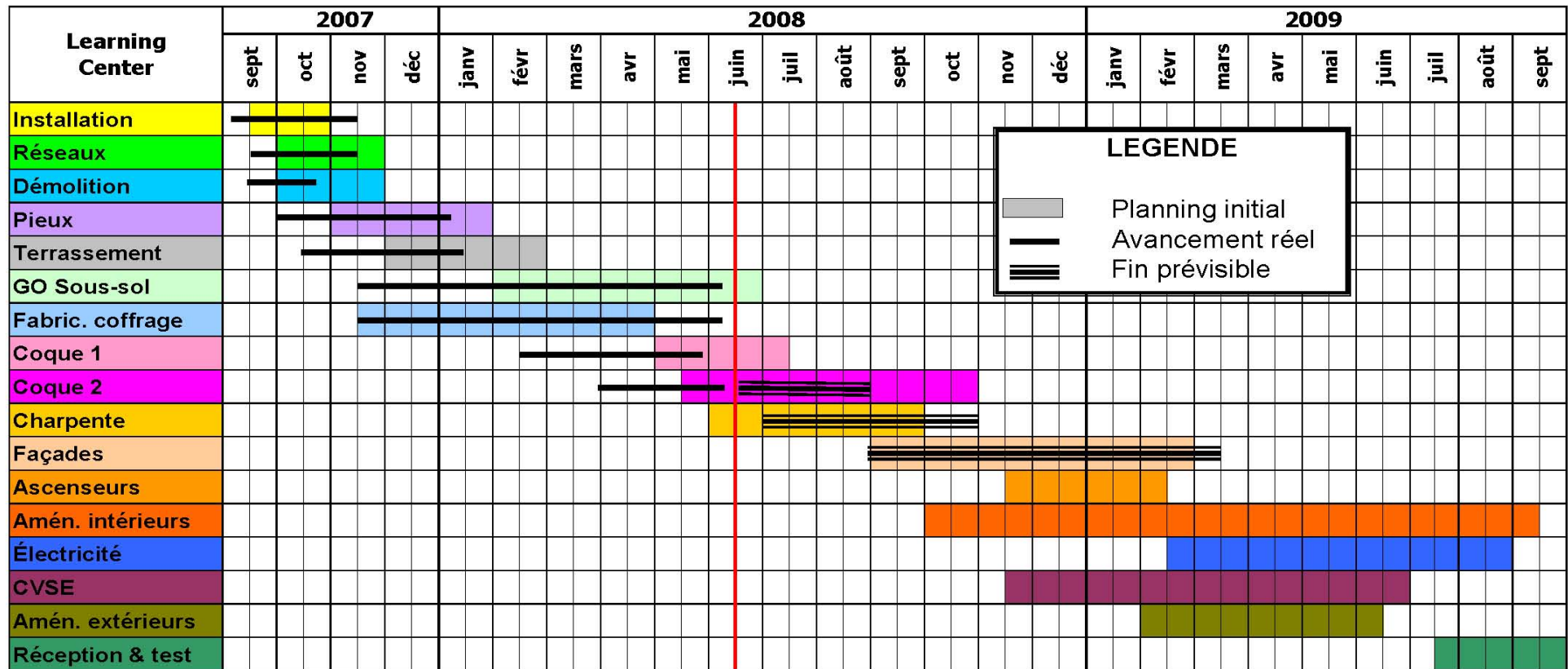
Pour la Fondation en faveur d'un environnement architectural adapté aux handicapés, l'AVACAH, Forum Handicap et l'Association suisse des paralysés (ASPR) :

Jean-Claude Ferroud, av.



Planning learning Center

13 juin 08



There were very hard times Sometimes



11 November 2009 Test with 2 poof + 1 on ground

The big shift of our libraries

- Preparation of collections 2 years
- Political decision to merge 10 libraries 1 year
- Team building 9 months
- Services and operating hours 6 months
- Actual move 2 months
- Closing 1 week
- Rodage 0 day
- Live 3 months onwards

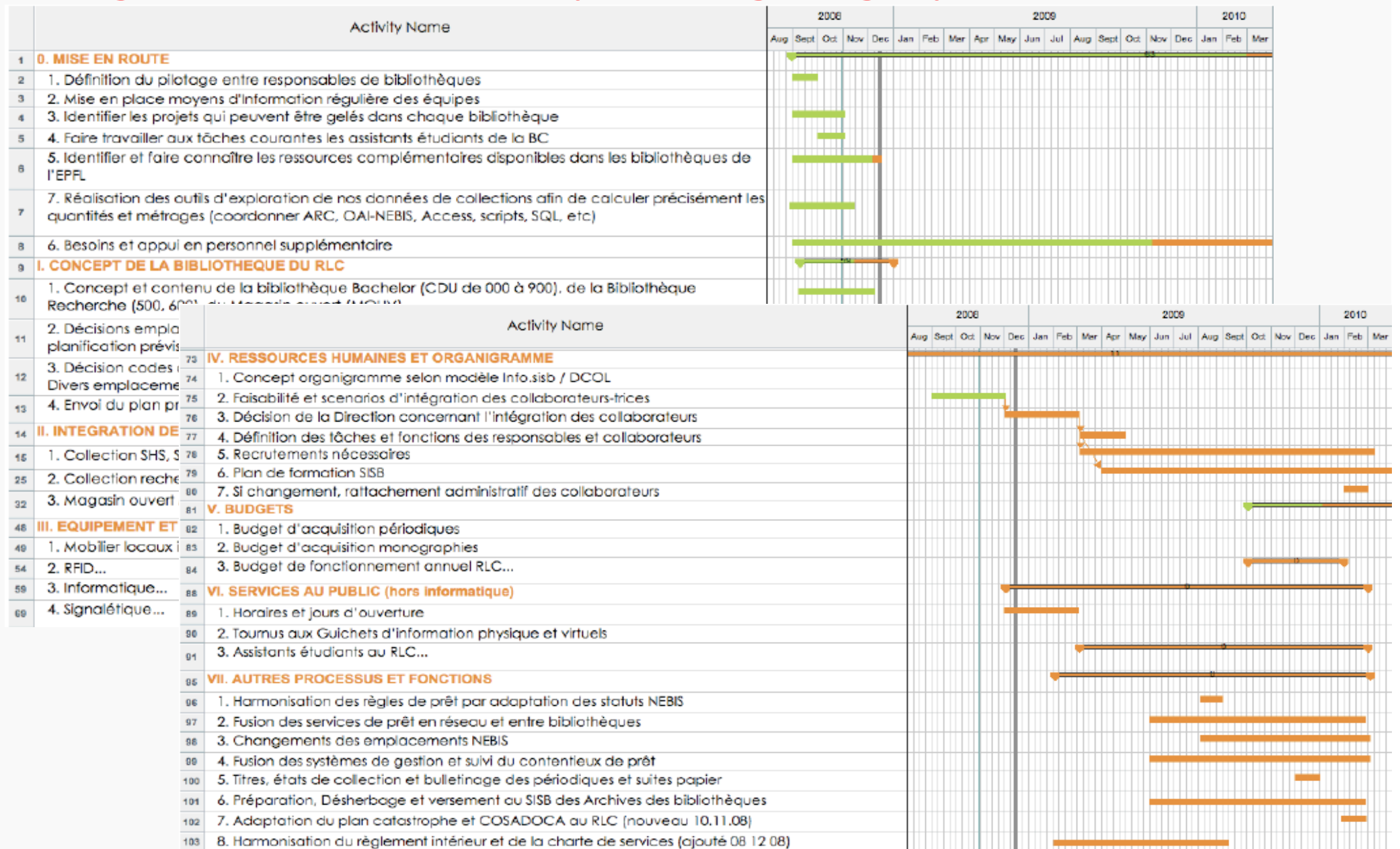
10 libraries are merging into 1

40 people, 500.000 documents

11.000 e-Journals, 15.000 e-books, 10.000 monogr./year



August 2008 : the first planning..... gasp



RLC : J – 238
(summer 2008)

**Préparation des
collections
État d'avancement**



http://www.flickr.com/photos/zach_manchester/3191938594/

B[©]
Bibliothèque
Centrale



Thomas Guignard – Bibliothèque Centrale
thomas.guignard@epfl.ch

1 La place est
suffisante



2 La collection
sera cohérente



3 Tout sera prêt



Simplified planning of the move

	novembre 2009	décembre 2009	janvier 2010	février 2010
Mobilier				
installations des compactus au sous-sol				
installations des étagères UNIFOR				
installation des tables, bureau et autres mobiliers				
Préparation				
signalétiques et étiquette dans les rayonnages des bibliothèques				
Déplacement des collections				
Collections en CDU à la BC le 4 janvier 2010. Sauf collections de BMA et BAR				
Toutes collections vers le MOUV				
Collections récentes BAR (Colline), BMA (Recherche), BC (CDU)				
Transfert des collaborateurs				
déménagements des bureaux des collaborateurs et des meubles spéciaux				
Fermeture des bibliothèques				
fermetures au 1er février 2010: BISCOM, Informatique, Physiques, Matériaux, CDM, CRAFT				
fermetures au 12 février 2010: Mathématiques, Bib centrale				
Derniers préparatifs				
Rangements, signalétique, réparations éventuelles, fignolages				
Ouverture				
Ouverture de la Bibliothèque de l'EPFL au RLC : 22 février 2010				

Moving with professionals



Communication, internal and external

- Poster
- Articles
- Meetings
- Web site
- Wikis
- Blog

De décembre 2009 à février 2010

From December 2009 to **Feb** 2010

Les bibliothèques de l'EPFL déménagent au

EPFL libraries are moving to the

Rolex Learning Center

INFOS
<http://library.epfl.ch/move>




L'actu en direct sur
<http://wiki.epfl.ch/bibrclc>

En route vers la Bibliothèque du RLC

Bibliothèque du RLC / Accueil du Wiki

Bonjour,
 Bienvenue sur le wiki destiné à présenter aux collaborateurs et collaboratrices des bibliothèques de l'EPFL les opérations en cours et les étapes franchies dans la mise en place de la Bibliothèque du Rolex Learning Center.

Table des matières	Contenu
1. Concept de la Bibliothèque	Quelle bibliothèque ? Quels services ? Quelle implémentation pour les collections ?
2. Planning de réalisation	Opérations et délais Ressources et groupes de travail Gantt (à venir)
3. Séances et relevés de décisions	Ce qui s'est dit Ce qui s'est décidé Quand et par qui
4. Outils et références	Outils de travail pour gérer les collections Publications / présentations utiles

Nom	Lien
Wikis et blogs	
Achats documentaires EPFL – contrats-cadres	http://wiki.epfl.ch/achats-documentaires
Projet "Assistants-étudiants au RLC"	http://wiki.epfl.ch/ass.etudiants
Atelier d'écriture de science-fiction PolySF	http://polysf.wikispaces.com/
Circuit documentaire	http://wiki.epfl.ch/cdl
Classification CDU	http://wiki.epfl.ch/cdu
COB : Commission des bibliothèques	http://wiki.epfl.ch/cob
Coordination des Secteurs de la Bibliothèque de l'EPFL	http://blogs.epfl.ch/bibrclc
Déménagement au RLC : GT Moving Books	http://wiki.epfl.ch/moving.books
Déménagement au RLC : reportages	http://wiki.epfl.ch/libmove
DOI-CH	http://wiki.epfl.ch/doi
Ebooks	http://wiki.epfl.ch/ebooks
En route vers la bibliothèque du RLC	http://wiki.epfl.ch/bibrclc
English for librarians, glossaire spécialisé en bibliothéconomie	http://wiki.epfl.ch/englishlibrarians
Indexation matières	http://wiki.epfl.ch/indexing
Infoscience – documentation	http://wiki.epfl.ch/infoscience
Infoscience – wiki de travail	http://infoscience-wiki.epfl.ch/
Liens partagés d'info.bc	http://wiki.epfl.ch/liens-partages
Liste de diverses applications, plugins, trucs et astuces en lien avec NEBIS	http://wiki.epfl.ch/indexing/tools
Liste des projets en cours au Compactus	http://wiki.epfl.ch/compactus-en-cours
Ouvrages de référence	http://wiki.epfl.ch/prin
Partage d'informations entre ISTE et la Bibliothèque centrale	http://wiki.epfl.ch/iste
Périodiques papier	http://wiki.epfl.ch/periodiques
Politique documentaire de l'EPFL	http://wiki.epfl.ch/poldoc
Prêt entre bibliothèques : harmonisation des pratiques	http://wiki.epfl.ch/peb-rlc
Projet CLEDAR	http://wiki.epfl.ch/cledar
Projet de circulation des livres	http://wiki.epfl.ch/circulation
Projets en cours du DCOL	http://wiki.epfl.ch/dcol
RFID au RLC	http://wiki.epfl.ch/rfidrlc
Wiki qui permet de mettre à jour certaines pages du site library.epfl.ch	http://wiki.epfl.ch/librarywebsite

umain. Prière de nous communiquer toute modification.

Team building

Define the mission

Define the organisation

Know where and who you are

Try to be prepared to the shock



Les lapins * dans l'espace. Saison 7.

1st of April



Les amis, en route vers le RLC !
Le paradis est là-bas!

Houlà ! Il a un peu forcé sur le prozac.
Il est en pleine [hallu](#) (voir ce mot).

C'est bizarre en ce moment. Je crois que je vais prendre un congé paternité de 4 mois et me faire opérer avant la retraite.



* Le lapin est l'animal préféré de Lise Aymonin. D'ailleurs elle pense qu'elle est un lapin. Donc son père aussi.

Mission of the Library

- The Bibliothèque de l'EPFL is a public library specialized in the EPFL's study and research areas.
- Whether virtual or material, it is a place of work, study and privileged access to information.

Its team offers each of its users a support and services useful to the success of their studies, research, or teaching.

- Dedicated to Discovery, the Library favours:
- mastery of scientific and technical tools and services,
- autonomy in one's informations' research,
- curiosity towards one's discipline and that of others.

Flat Organisational chart / Versatility as a virtue

Public

Document

**Information
&
Public services**

Reference, Info Literacy,
Troubleshooting,
Lending, ILL, Exhibitions,
Communication

**Academic support
&
Collection devlpt**

Subject acquisition of all info,
IR and publication counselling,
Document processing

IT services

Servers, network, PC, Software, RFID
Printers – scanners - copiers
Web site(s) - SFX – ALEPH
Infoscience IR

Subscriptions and Licences

Lead & Support

Direction, H.R., R.P.,
Finance, Logistics



Organisational chart

Conduite & Support

David Aymonin	1.00
<Rplct C Rönnheim>	1.00
Mirjana Rittmeyer	0.80
Valérie Charbonnier *	0.70
	3.50

Informatique & Bibliothèque électronique

Georges Iffland	1.00
Sylvain Vuilleumier	1.00
Lionel Walter *	0.50
	2.50

Logistique & Economat

Gilles Laupin	1.00
<Rplct NBK> *	0.50
Damien Guéritault	0.90
Julien Tanari	1.00
Jérôme Yerly *	1.00
	4.40

Services & Formations aux Utilisateurs

Guilaine Baud-Vittoz *	0.80
Anne Ecabert *	0.60
Anne Cherbuin *	0.80
Alexandra Forclaz *	0.70
<Rplct G Baud-Vittoz> *	0.80
Sylvie Vuilloud-Marcacci *	0.60
Manuèle Ducret *	0.50
Natalie Bireima *	0.50
Delphine Margot *	0.50
	5.80

Abonnements & Licences

Caroline Bosia *	0.80
Simone Cardinaux	0.75
Anil Goolaub *	0.40
	1.95

Appui Académique & Développement des Collections

Thomas Guignard *	0.80
Chantal Blanc *	0.50
Jacqueline Despont *	0.50
Catherine Sénéchaud *	1.00
Geneviève Dumont *	0.50
Simon Pasquier *	1.00
Josiane Moll *	0.50
Pierre Devaud *	0.80
<Rplct I Dubot> *	0.50
François Schmitt *	0.80
Carole Coradi	0.20
Claude-Alain Brot *	1.00
Alain Borel *	1.00
Isabelle Mathieu *	0.40
Martin Coradi	1.00
Geneviève F. Guéritault *	0.90
Julie Chabloz *	0.80
Elisabeth Becker	0.20
	12.40

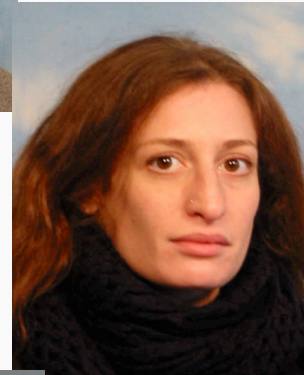
Novembre 2009

(* = Participation au tournus des guichets)

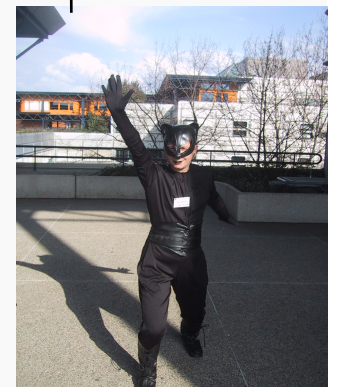
Coaching



Thank you all !



Super
librarian was
here too

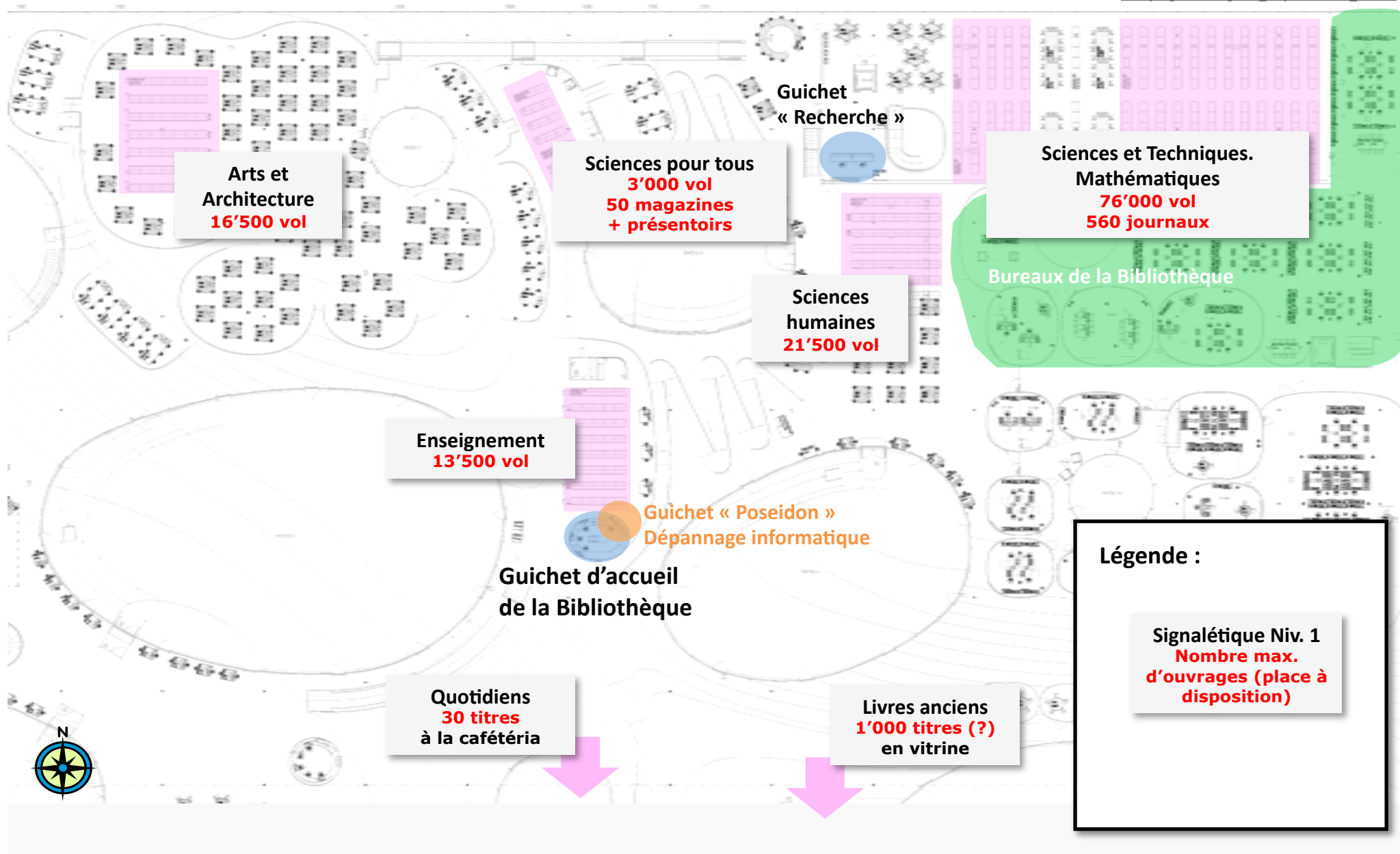


Map of collections

Version 29.04.10 / TG

Signalétique / dénomination des guichets à valider

Source: [Comptage-ml-etageres_dispo-9-11-09_mir.xls](#)



Plan détaillé des emplacements et signalétique

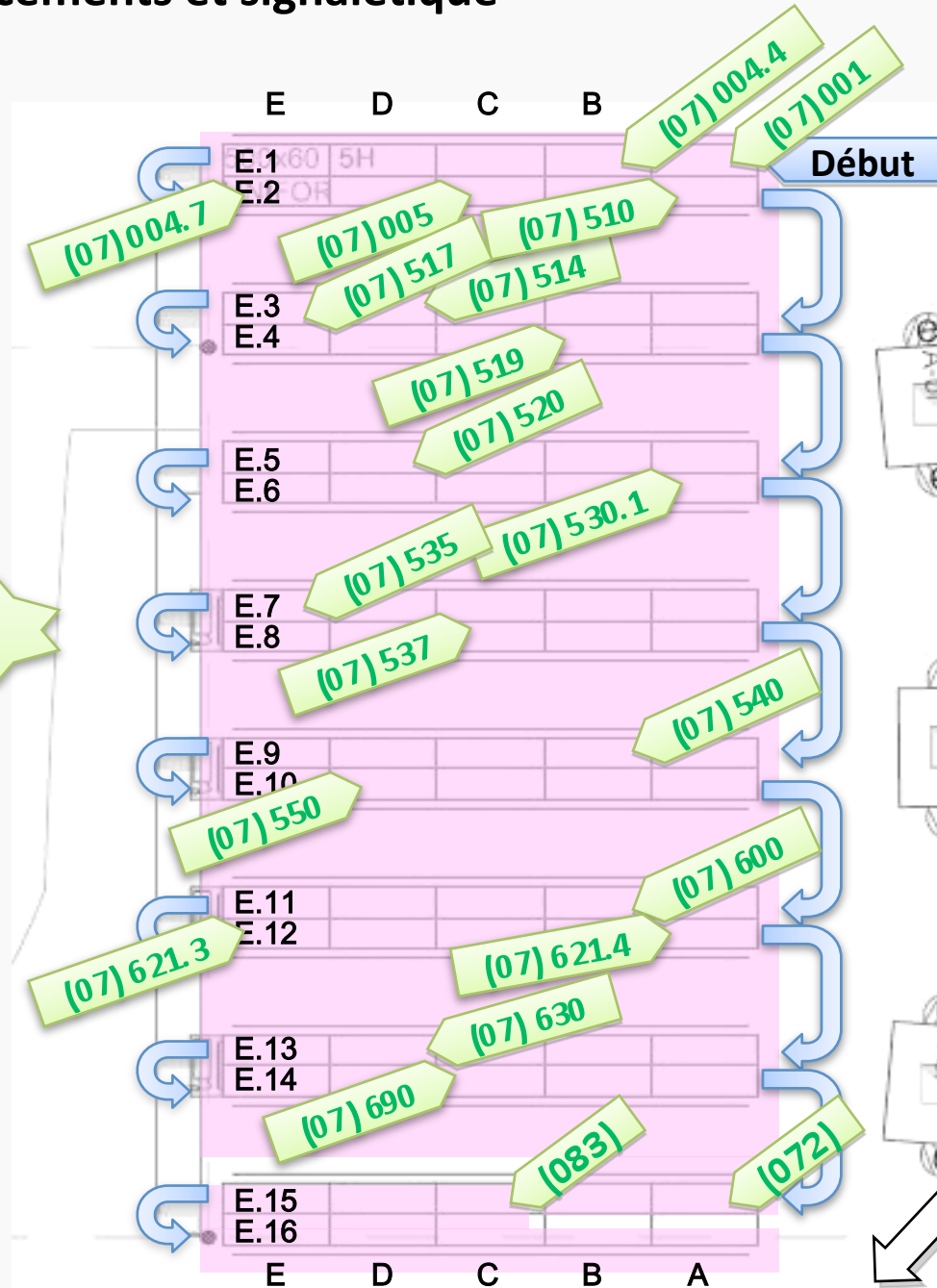
Zoom Enseignement

Version 01.02.2010/ TG

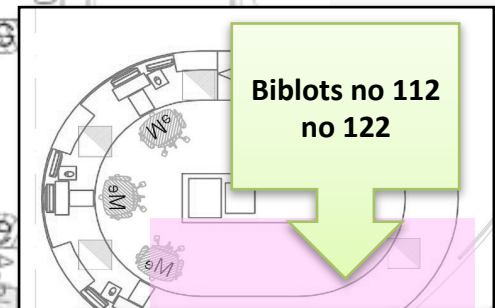


Accès principal
des lecteurs

sur 5 hauteurs



Emplacement: **E02EA**
Collection d'Enseignement
CDU (07), (072)



Emplacement: **E02GU**
Guichet 1
principal
(CDs, DVDs)

Emplacement: **E02EC**
Normes, formulaires, etc.
CDU (083)

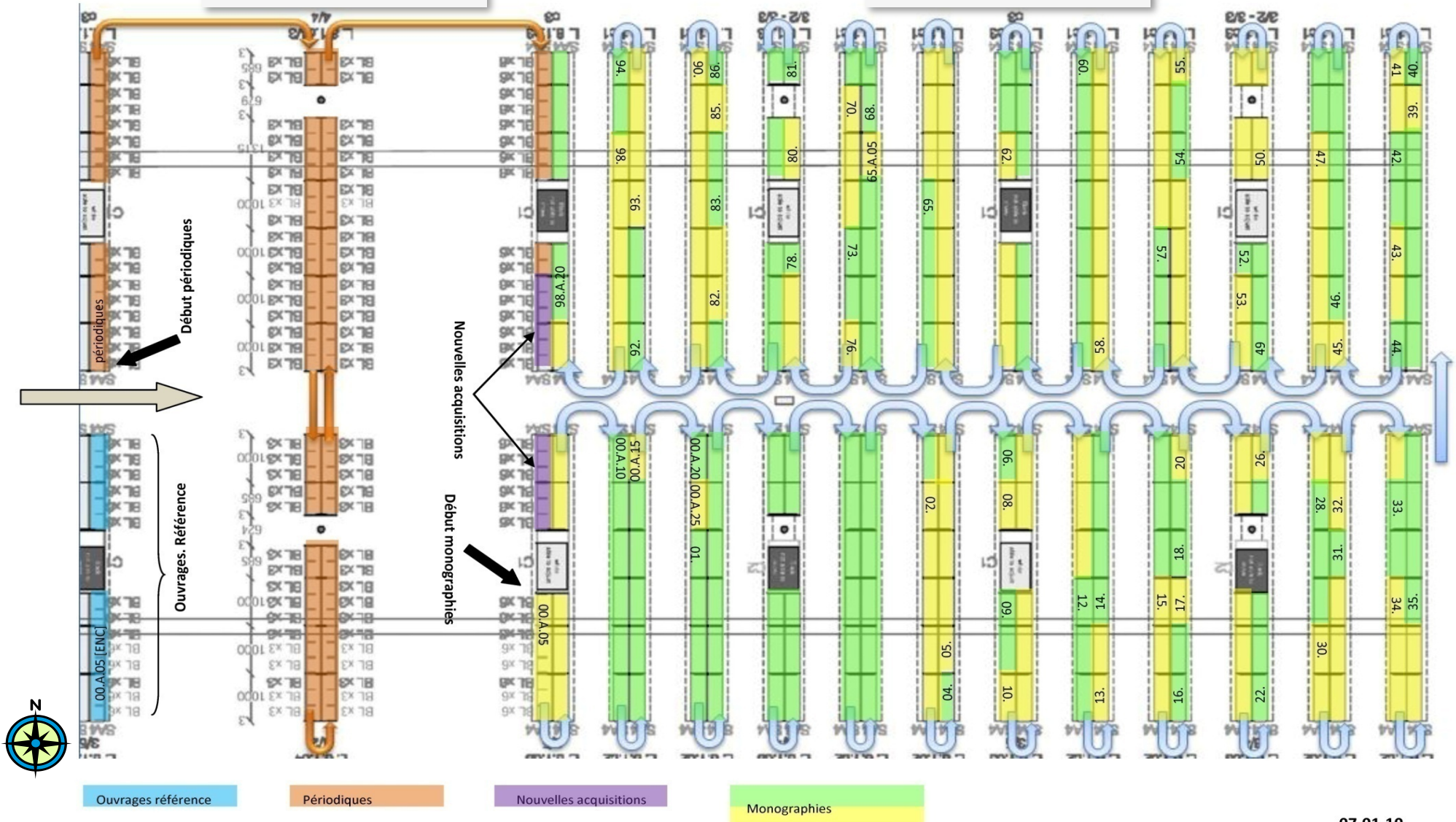
Plan détaillé des emplacements et signalétique – en travail

Zoom Sciences et Techniques – Mathématiques

Version 18.01.2010/ SMA

Emplacement: E02RC

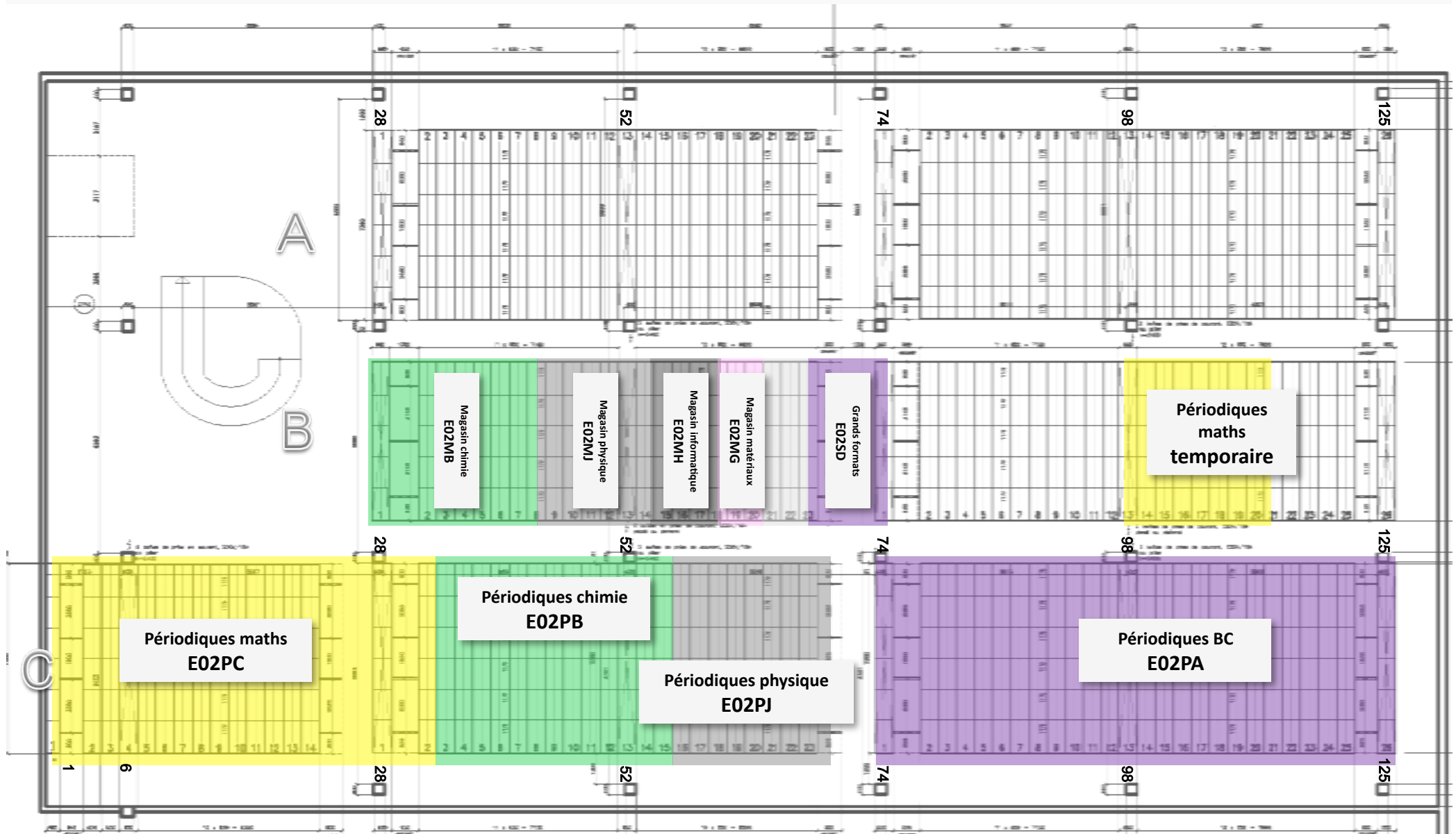
Emplacement: E02RB



Plan détaillé des emplacements et signalétique – en travail

Sous-sol

Version 28.10.09 / TG



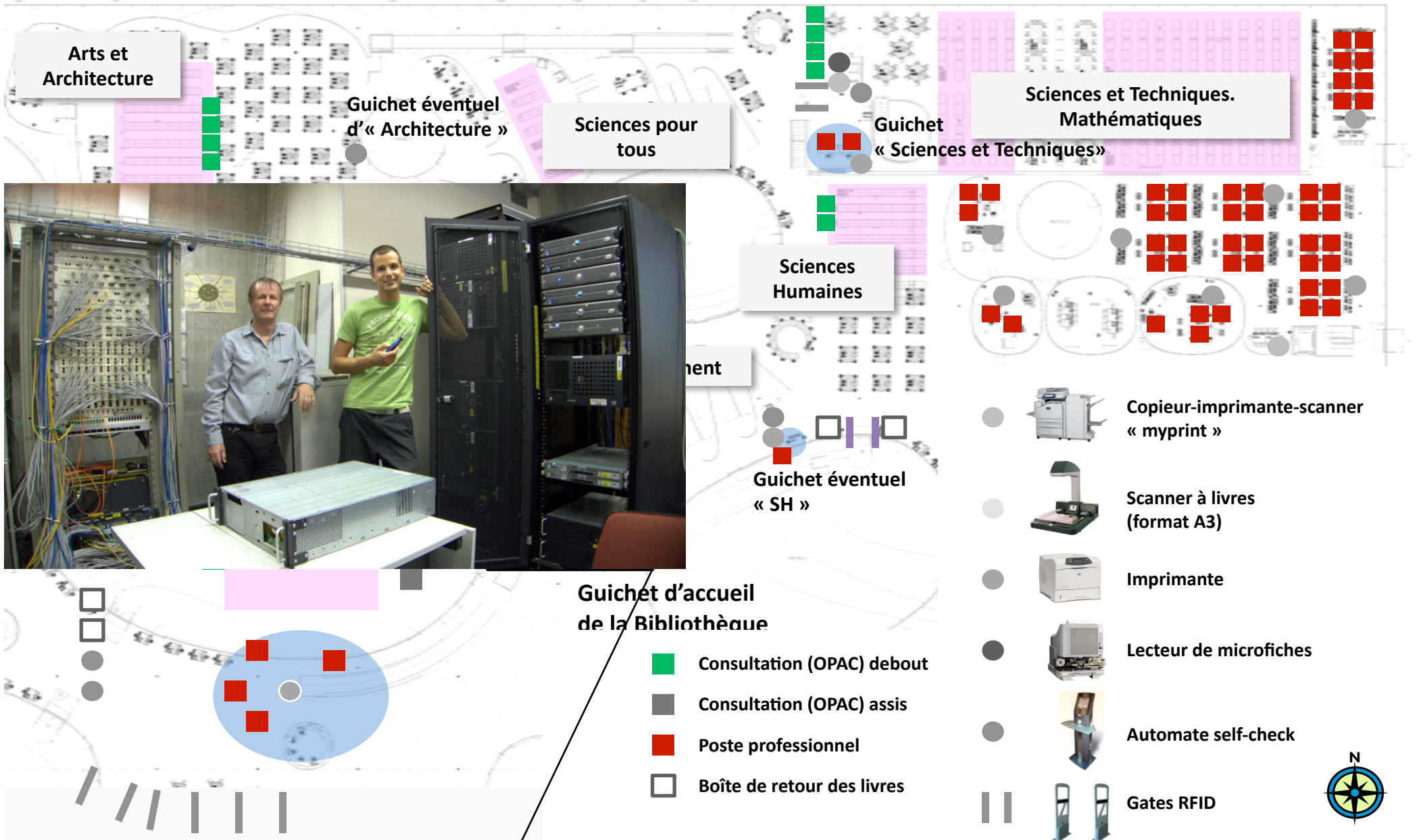
IT services and equipment

Version 12.01.2010 / TG

Mise à jour 29.01.10 /GV

Emplacements indicatifs

Sources: [RLC_plan-general-meuble_sept-09.pdf](#) | [informatique_au_RLC_v6_2009824.xls](#) | [20090309_RLC_RFID_schematique_v11.pdf](#) | CE du 2.11.09



**The results are close to what we
expected**

<http://library.epfl.ch>
La Bibliothèque de l'EPFL

3 Millions of books in NEBIS

100'000 books + 400'000 vol. = 12 km of collections
 In free access

20.000 E-books

11.000 E-Journals

100 Databases

EPFL SCIENTIFIC INFORMATION AND LIBRARIES
 ÉCOLE POLYTECHNIQUE FÉDÉRALE DE LAUSANNE
 Français | English EPFL > Scientific Information

QUICK LINKS
 Books (NEBIS)
 E-books
 Periodicals @EPFL
 Databases
 Encyclopaedias, dictionaries
 Student reserve collection
 EPFL PhD Theses
 Infoscience
 All resources
 New acquisitions

BIBLIOTHEQUE DE L'EPFL
 Opening hours:
 7 days a week: 7h-24h
 Services : Mo-Fr 8h-20h
 How to find us
 Map of the Library
 Classification scheme

ABOUT US
 Libraries
 Rolex Learning Center
 InfoDoc forum
 The team
 Mission
 Publications
 Cosadoca
 A-Z index

Search within...

 books e-books periodicals ... or **all resources**

Books and other documents from the Nebis network (including more than 80 scientific libraries) available for you.
 Quick link to **NEBIS catalogue**.

You want to...

- Visit the Library
- Borrow, reserve
- Order a document from a library outside EPFL
- Suggest a purchase

You have a question...

- Virtual information desk
- questions.bib@epfl.ch
- +41 21 693 21 56
- F.A.Q.

Help

- Search tips
- Training sessions at EPFL
- Tools and software

News from the libraries

- The Senior Administration of EPFL offers students **additional study rooms from Tuesday, May 25**, until the end of exams. [More...](#)
- New version of infoscience.** After months of development and tests, infoscience's new version is arrived on Monday, March 15th, 2010! [More...](#)
- Les **Techniques de l'ingénieur** sont accessibles à l'EPFL. Avec les **Techniques du Management pour l'ingénieur** et un **Lexique multilingue des termes techniques**
- Several **Collins language dictionaries available online**: FR-EN, FR-DE, FR-ES, FR-IT, EN-DE, EN-ES, EN-IT

Efficient ILL/PEB

43 Specialized staff (34 FTE)

Help Training

©2010 EPFL Bibliothèque, CH-1015 Lausanne ; webmaster.bib@epfl.ch
 Illustration : © Sandra Baud, retro-vero

Merging of 10 libraries into 1 at the Rolex Learning Center

Powered by **infoscience**
 An upper class Institutional Repository

La COEN
 9000 books in the Course Reserve

Living space



Open 7/7, 7:00-24:00 – 3 restaurants – 1 bookshop – 1 bank ...



Working space(s)



15'000 m² – 830 seats – silent zone – quiet zone – group work



Working space(s)



WiFi access – printers – scanners – copiers – laptops on loan ...



Library services



Library open 7/7 – professional advice 8:00-20:00 weekdays



Collections



500'000 documents – 11'000 e-journals – 20'000 e-books ...



Here it is !

	BIOTOPE	INFORMATION GATEWAY	SCHOOL
<p>21st C. Academic Library</p> <p>as place and facility</p>	<p>A place for work and life for the students</p> <p>A meeting place for the others</p> <p><u>It provides an help for success in everyone's projects</u></p>	<p>Organised access to <u>all</u> the information resources in the world</p> <p><u>With an emphasis on the most useful</u></p> <p><u>Whatever the media</u></p>	<p>Transmission of a culture of information</p> <p>i.e. the capacity to</p> <ul style="list-style-type: none"> - search - criticise - make use - produce information

Provides & Goes

More Comfort Services

More Access Flexibility

Beyond Google

Let's go ! Come to visit the RLC



Merci de votre attention
<http://rolexlearningcenter.epfl.ch>

Videos

A vision of students today (Dr. Michael Wesch, Kansas State University) <http://www.mediafire.com/?3xbhmdmsfmd>

Saltire Centre (Scotland) : http://www.jisc.ac.uk/media/avfiles/programmes/elearning_innovation/saltire_wm.wmv

Explora (NL) : http://www.surfmedia.nl/app/video/130567/play?format_id=159514&Xplora_ENGELS_subtitle.wmv&mode=url

References

- IFLA Library building guidelines : developments & reflections / ed. on behalf of IFLA by Karen Latimer ... [et al.] München : Saur, 2007. - 266 p. : Ill. – ISBN 978-3-598-11768-8.
- Drivers and Directions of Academic Library Development 2005, by MICHAEL COTTA-SCHÖNBERG. European Business Schools Librarians' Group ([EBSLG](#)), Annual meeting, Paris, Avril 2005. [online], accessed 2008-11-17. <http://liber.library.uu.nl/publish/articles/000130/>
- Library as place : rethinking roles, rethinking space. Council on Library and Information resources, Washington, Février 2005. [online], accessed 2007-06-18. <http://www.clir.org/pubs/abstract/pub129abst.html>
- Transforming library service through information commons case studies for the digital age D. Russell Bailey and Barbara Gunter Tierney -- Chicago : American Library Association, 2008, ISBN 978-0-8389-0958-4
Extract: <http://www.nercomp.org/data/media/DRBailey%20IC%20toLC%20-%20Definitions.doc>
- The information commons handbook. Donald Robert Beagle ; with contributions by Donald Bailey and Barbara Tierney -- New York : Neal-Schuman Publishers, 2006, ISBN 978-1-55570-562-6
- Designing spaces for effective learning : A guide to 21st century learning space design. Higher Education Funding Council for England (HEFCE) on behalf of JISC, 2006. [online], accessed 2008-11-17. http://www.jisc.ac.uk/eli_learningspaces.html
- Perception of libraries and information resources. OCLC, Novembre 2005. [online], accessed 2008-11-17. <http://www.oclc.org/reports/2005perceptions.htm>
- OCLC's Environmental scan 2003 : Pattern recognition. OCLC, 2003. [online], accessed 2008-11-17. <http://www.oclc.org/reports/2003escan.htm>
- Learning Center : the Lausanne Exemple. David Aymonin. Presented at LIBER architecture group seminar, Utrecht, March 20-24, 2006. Available at <http://infoscience.epfl.ch/record/138474>
- The Library of the Rolex Learning Center : considered as the "best place to be" on the campus @ EPFL. David Aymonin. Presented at LIBER 2009 annual general conference, Toulouse, June 30 – July 3, 2009. Available at <http://infoscience.epfl.ch/record/139230>

Power point Credit

MERCI ! [Thomas Guignard@epfl.ch](mailto:Thomas.Guignard@epfl.ch)

Photo credits

Laurent Gilléron / Keystone (SwissCube)

Alain Herzog / EPFL

Ivo Rovira / Alinghi

Blue Brain Project / EPFL

[Trevor Patt @ flickr](#)

[Michael Backhaus @ flickr](#)

[Thomas Guignard @ flickr](#)

[Racine @ flickr](#)

[Brian Talbot @ flickr](#)

[Emilie Eagan @ flickr](#)

[Steven James @ flickr](#)

[Dano Nicholson @ flickr](#)