



38th Liber Annual General Conference

Toulouse, France

30th June - 3rd July 2009

# the Library of the Rolex Learning Center

considered as the  
« best place to be »  
on the Campus @



ÉCOLE POLYTECHNIQUE  
FÉDÉRALE DE LAUSANNE

[David.Aymonin@epfl.ch](mailto:David.Aymonin@epfl.ch)

2nd July 2009

# Outline

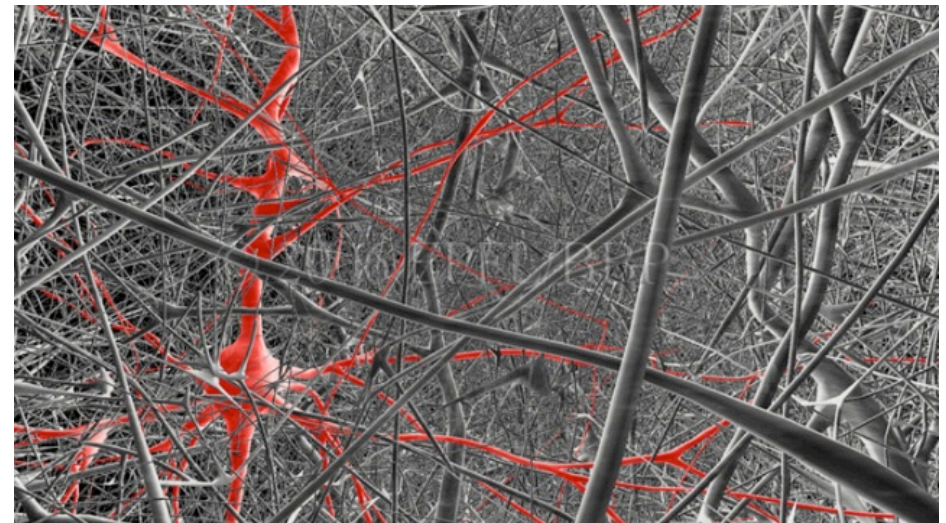
- EPFL's Context and figures
- RLC's Architecture project
  - 21st century opens the « No-tech building » era
  - Interaction and transparency in a library ?
  - Can slopes and landscapes inspire study and exchanges ?
- Added value(s) of such a (not so) new academic Library
  - Facilities
  - Collections
  - Services
  - Team



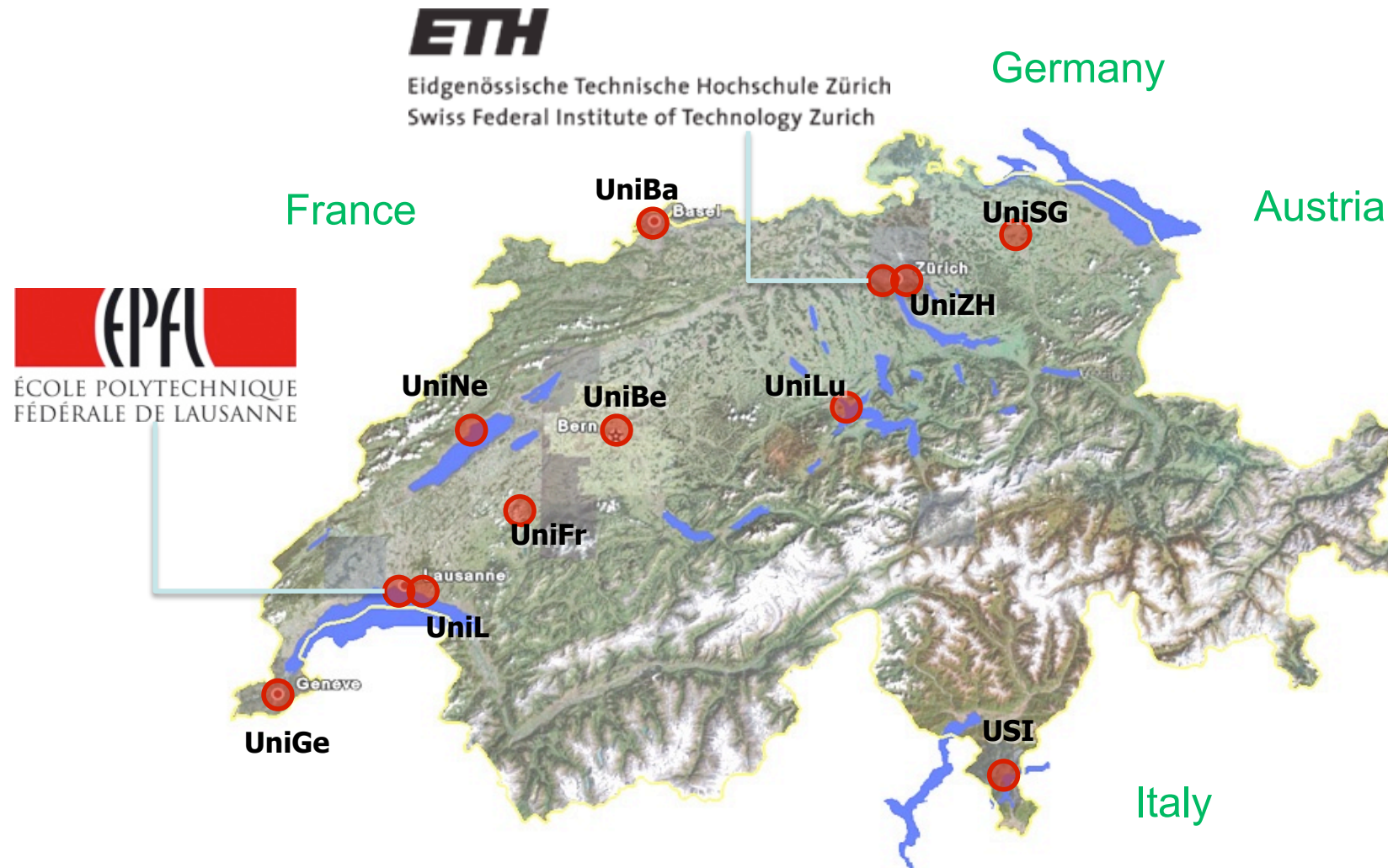
# Education – Research – Tech Transfer

A short film  
«Reception of the new students»  
is available online

[http://videoserv.epfl.ch/RealContent/Nas/427\\_ACCUEIL2008ENG.flv](http://videoserv.epfl.ch/RealContent/Nas/427_ACCUEIL2008ENG.flv)



EPFL is one of the 2 **Swiss Federal institutes of Technology**, besides 10 Cantonal Universities and 9 Hautes écoles spécialisées



# A multicultural middle sized technological university



<http://futuretudiant.epfl.ch/page12313-en.html>

- 112 nationalities on campus
- 60% of faculty from abroad
- 40% foreign students (MS: 34.5%, PhD: 68%)
- Some Librarians **are imported too...**

5'000	Ba+Ma Students
1'600	PhD Students
270	Professors ( <i>FTE</i> )
3'500	Staff

Federal money : ca. 300 Mio €  
Grants and contracts : ca. 100 Mio €

One of the world's most international campuses!  
(Times, Higher Education Suppl., 2004)



# Proud to compete well in the « Race »

## Newsweek International Edition

### The Top 100 Global Universities, 2006

1.	Harvard University	USA
2.	Stanford University	USA
3.	Yale University	USA
5.	California Institute of Technology	USA
7.	University of California at Berkeley	USA
6.	University of Cambridge	GB
7.	Massachusetts Institute Technology	USA
9.	Oxford University	GB
11.	University of California at San Francisco	USA
12.	Columbia University (New York)	USA
13.	University of Michigan at Ann Arbor	USA
14.	University of California at Los Angeles	USA
15.	University of Pennsylvania	
	Duke University	
	Princeton University	USA
16.	Tokyo University	J
17.	Imperial College London	GB
18.	University of Toronto	CAN
19.	Cornell University	USA
20.	University of Chicago	USA
21.	Swiss Federal Institute of Technology in Zurich	CH
22.	University of Washington at Seattle	USA
23.	University of California at San Diego	USA
24.	Johns Hopkins University	USA
25.	University College London	GB
26.	Swiss Federal Institute of Technology in Lausanne	CH
27.	University Texas at Austin	USA
28.	University of Wisconsin at Madison	USA
29.	Kyoto University	J
30.	University of Minnesota	USA

EPFL No. 6  
in Europe

## Academic Ranking of World Universities

### Top 100 Universities in Engineering, 2008

1	Massachusetts Inst Tech (MIT)	USA
2	Stanford Univ	USA
3	Univ Illinois - Urbana Champaign	USA
4	Univ California - Berkeley	USA
5	Univ Michigan - Ann Arbor	USA
6	Univ Texas - Austin	USA
7	Carnegie Mellon Univ	USA
8	Georgia Inst Tech	USA
9	Pennsylvania State Univ - Univ Park	USA
10	Univ California - San Diego	USA
11	Univ Southern California	USA
12	California Inst Tech	USA
13	Univ California - Santa Barbara	USA
13	Univ Maryland - Coll Park	USA
15	Univ Cambridge	UK
16	Cornell Univ	USA
17	Purdue Univ - West Lafayette	USA
18	Swiss Fed Inst Tech - Lausanne	Switzerland
19	Tohoku Univ	Japan
20	Northwestern Univ	USA
21	Univ Toronto	Canada
22	Ohio State Univ - Columbus	USA
23	Kyoto Univ	Japan
24	Princeton Univ	USA
25	Imperial Coll London	
25	North Carolina State Univ - Raleigh	
27	Univ Washington - Seattle	
27	Univ Wisconsin - Madison	
29	Natl Univ Singapore	Singapore
29	Tokyo Inst Tech	Japan
31	Univ Minnesota - Twin Cities	USA

EPFL No. 2  
in Europe

Building a library

# The needs of our EPFL community have evolved

- Increase from 2'000 → 7'000 students
- Ambition : High quality teaching / Cutting edge research
- New goals :
  - « make our students the entrepreneurs of their knowledge »
- « focus groups » have revealed the expectations of the EPFL inhabitants :
  - Students and guests housing
  - International conference center
  - A real campus, living 24h/7
  - With a LIBRARY as its heart



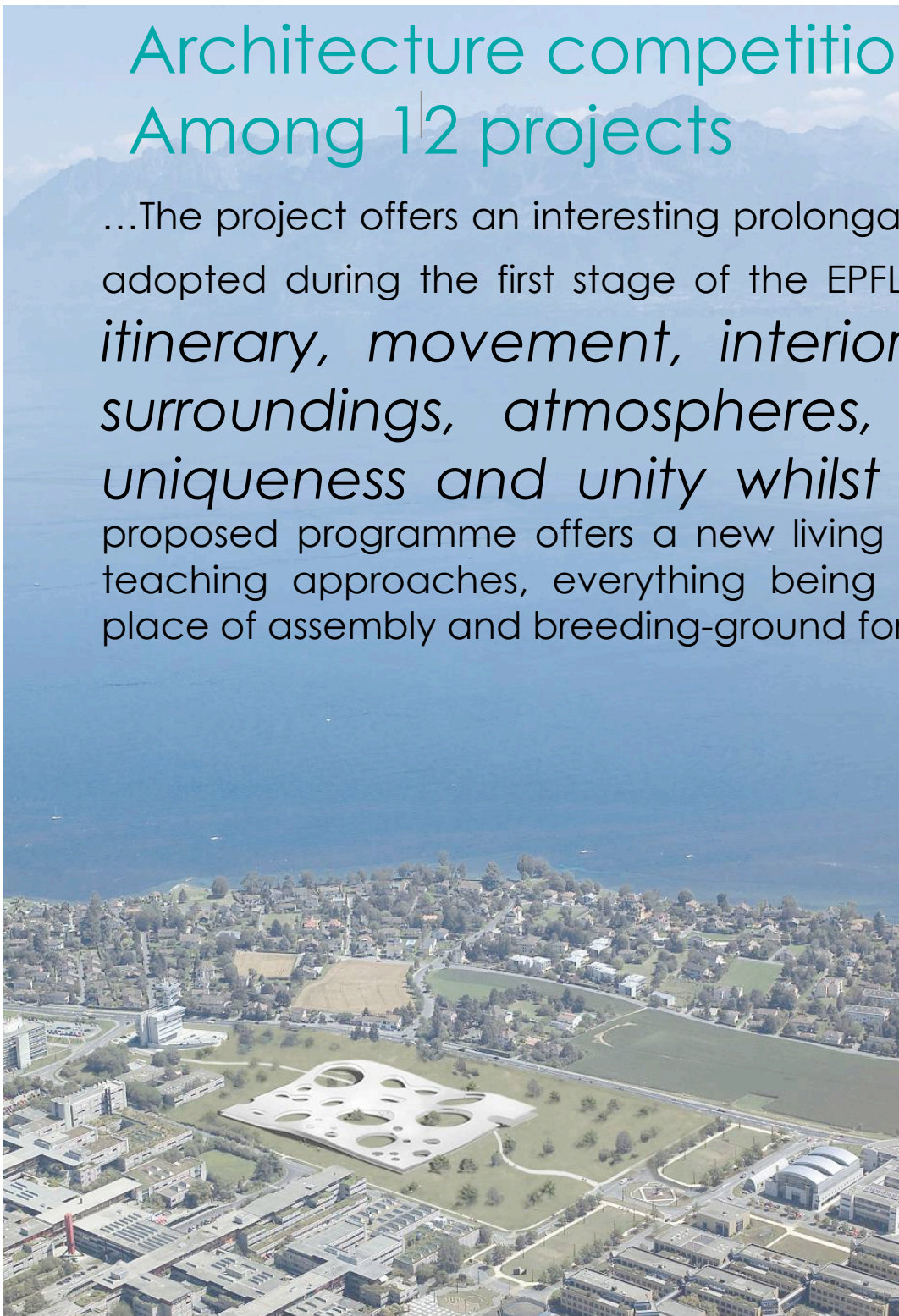
# Architecture competition in 2004

## Among 12 projects

...The project offers an interesting prolongation of and analogy with the philosophy adopted during the first stage of the EPFL's construction : *importance of itinerary, movement, interior courtyards with different surroundings, atmospheres, richness of vegetation, uniqueness and unity whilst still creating diversity...* The proposed programme offers a new living space, opens up the possibility of new teaching approaches, everything being integrated into one single building as place of assembly and breeding-ground for *enriching encounters and synergies...*

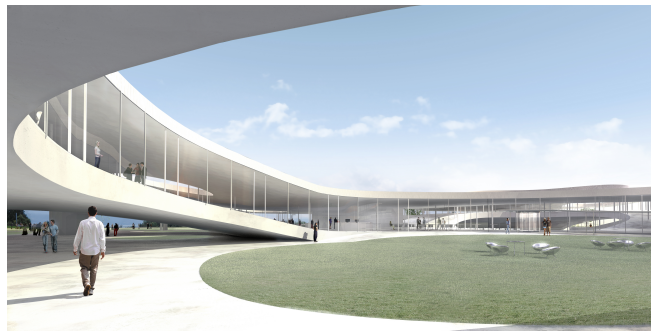
**Sanaa, Tokyo**

**Kazuyo Sejima**  
**Ryue Nishizawa**



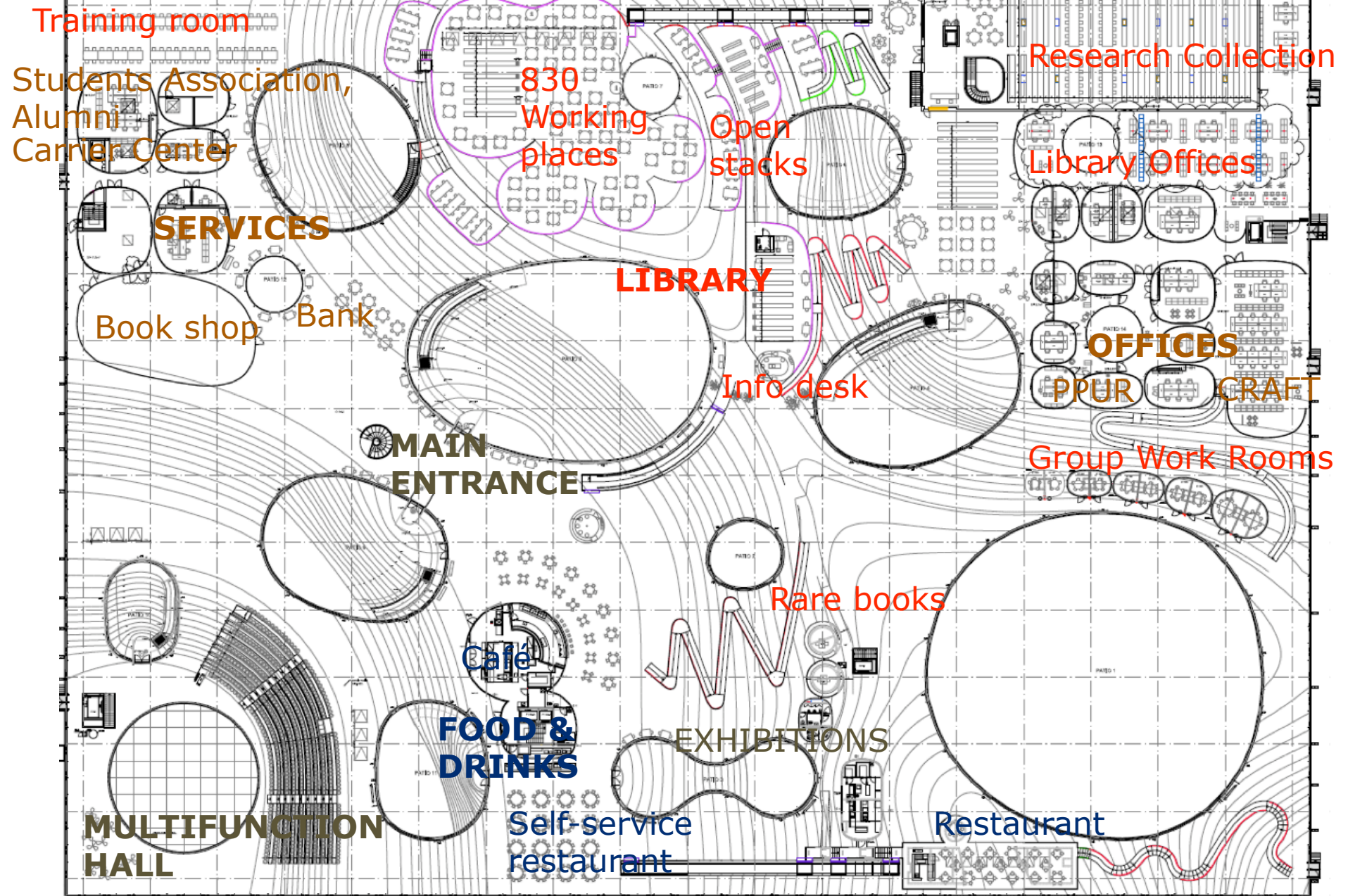


# Actual and artist's views of the Rolex Learning Center





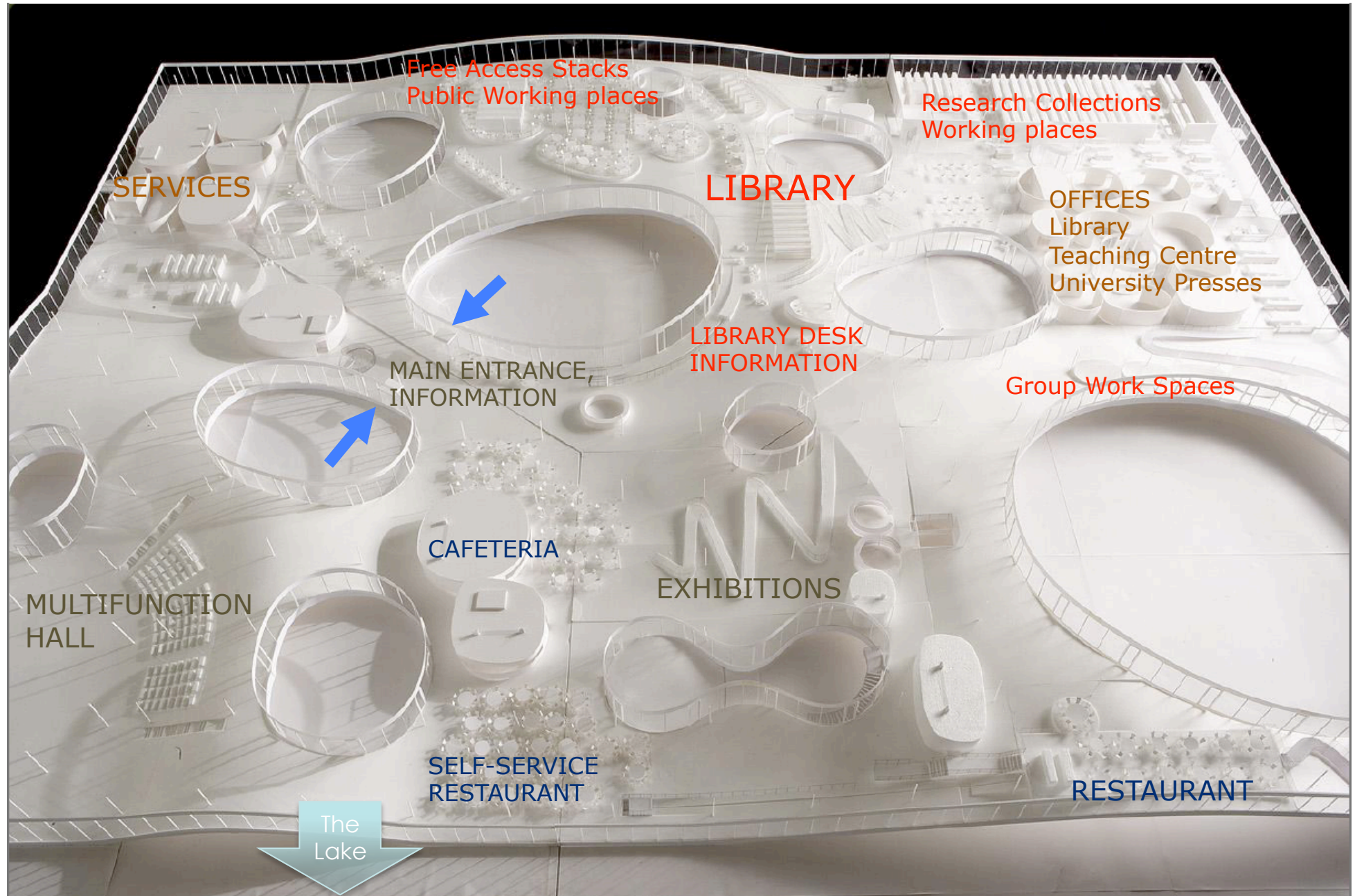
# RLC : Main functions



+ basement : moving shelves, 500 car park places, technical spaces

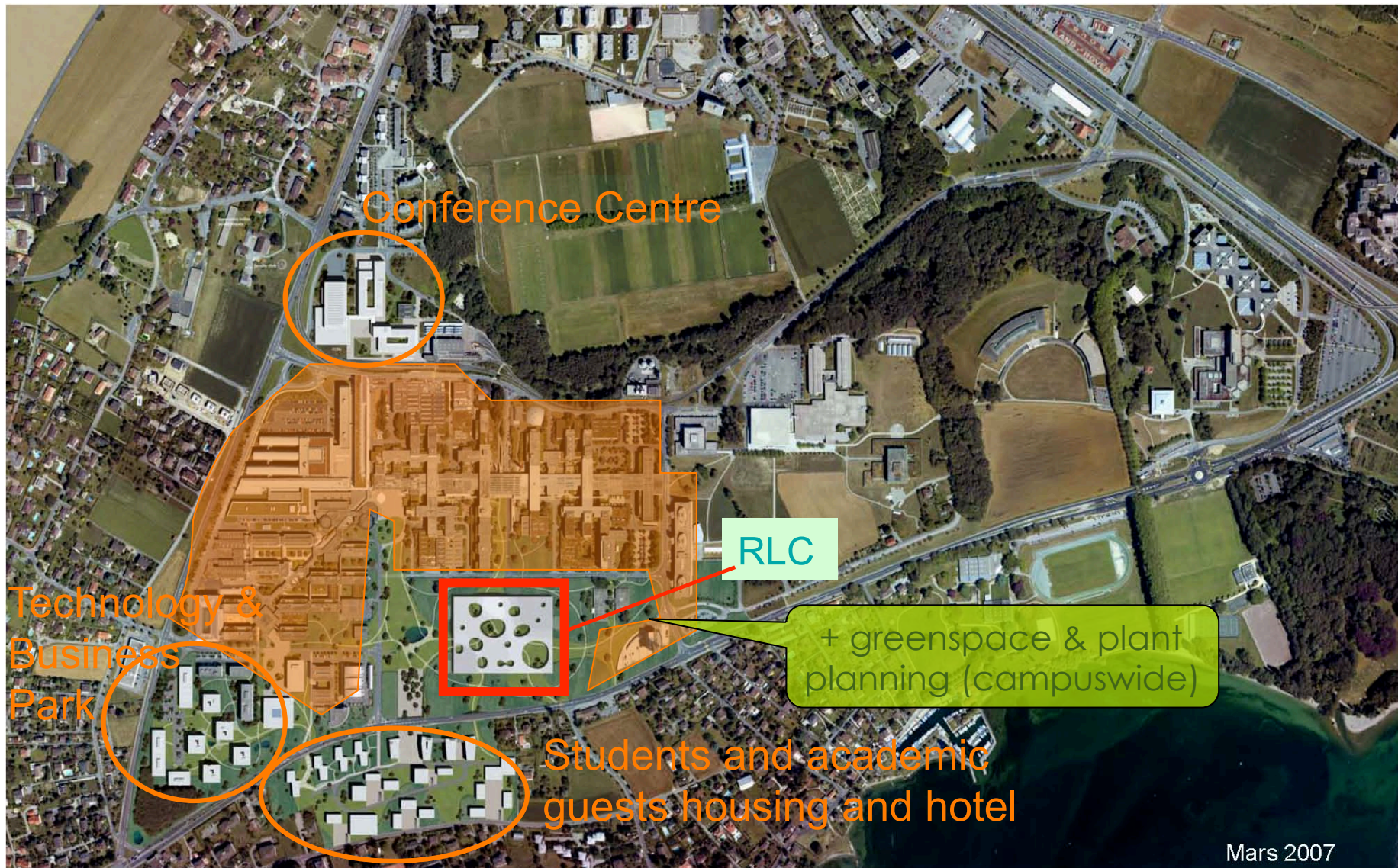


# Slopes and open spaces as internal landscapes





# Embedded in a global transformation of the campus



The rationale of the library as a place



# Concept

## 21st Century Library

- A couple of issues for all libraries are how to deal with the legacy of paper based materials in an increasingly electronic world, and how to move the focus to people and learning...
- The Learning Center holds the complete University collection...
- The bookstock was split into 2 sequences - books ... borrowed regularly and those that are browsed.
- The borrowed stock is available on open shelves ... and the browsed stock is housed in moveable compact shelving.

*Les Watson*

Saltire Caledonian Learning Center, Glasgow



# Existing libraries are LCs already



Summer pre exam  
period at  
CentralLibrary@EPFL





# The youngest students are our target

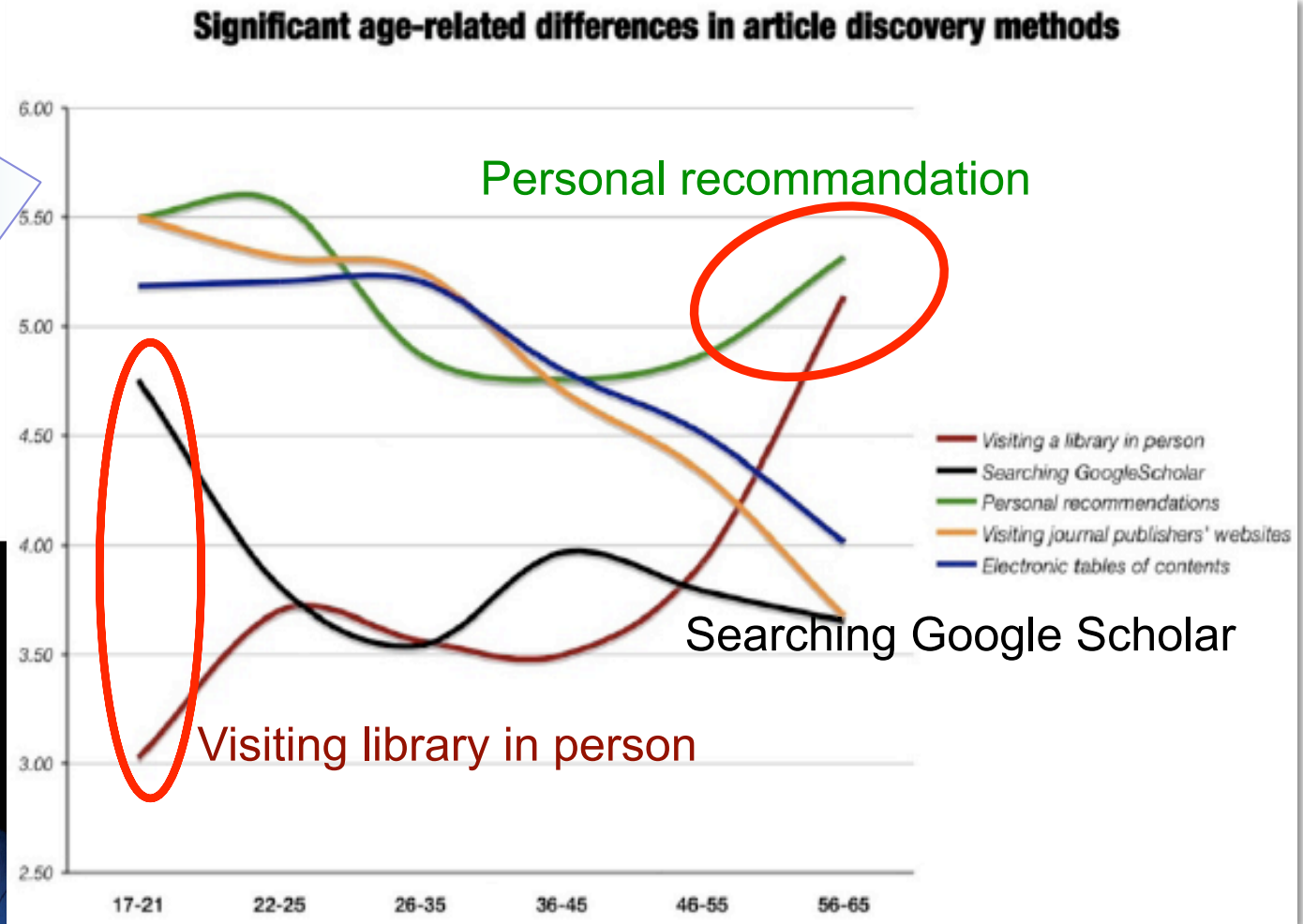
Relative value given to scientific sources in order to find a scientific paper



a cyber briefing paper

information behaviour of  
the researcher of the future  
11 January 2008

UCL



- Search engine as the 1st used tool
- Importance of Expertise, social network

<http://www.bl.uk/news/pdf/googlegen.pdf>

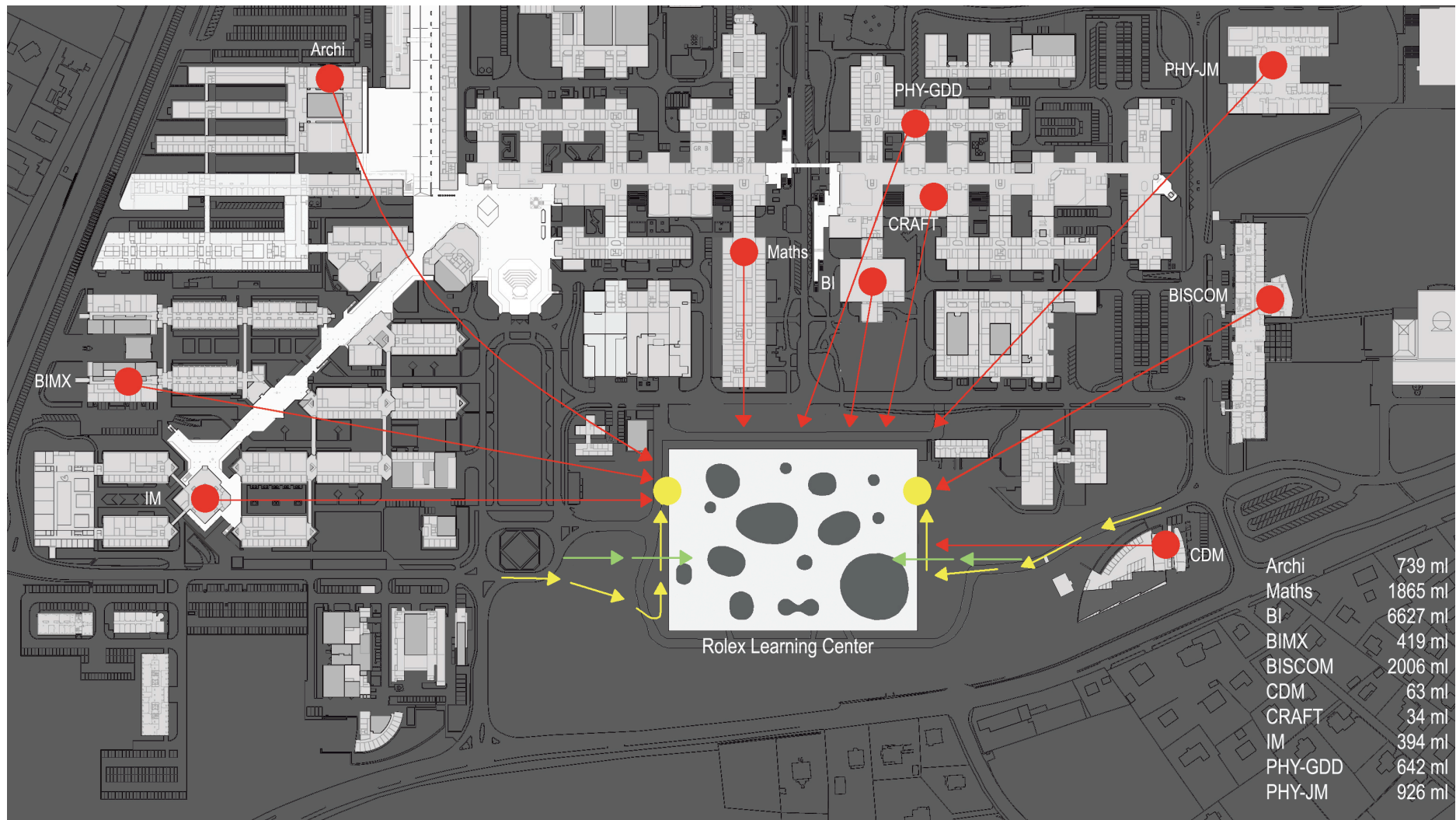
Facilities  
Collections  
Services



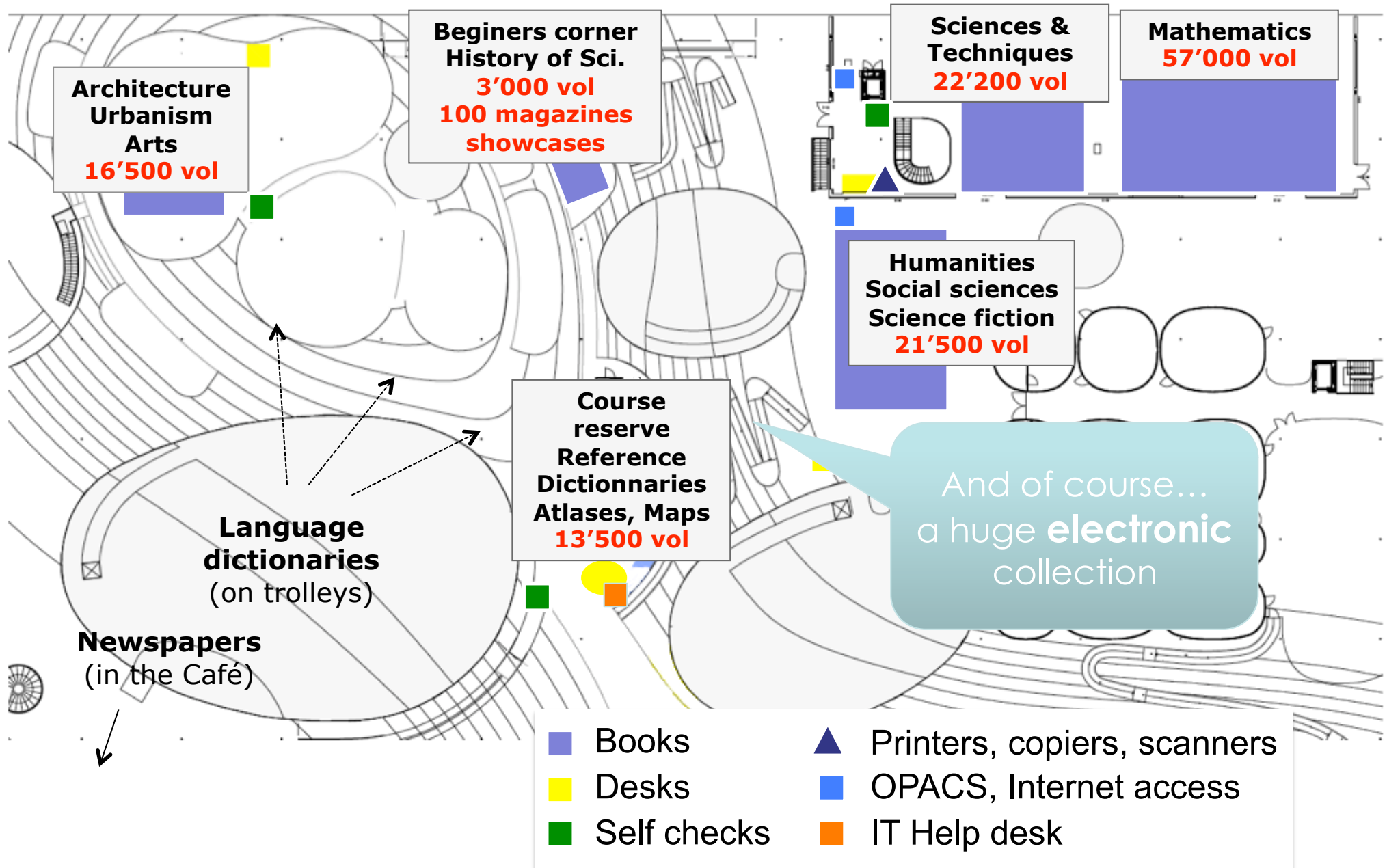
# 10 libraries are merging into 1

40 people, 500.000 documents

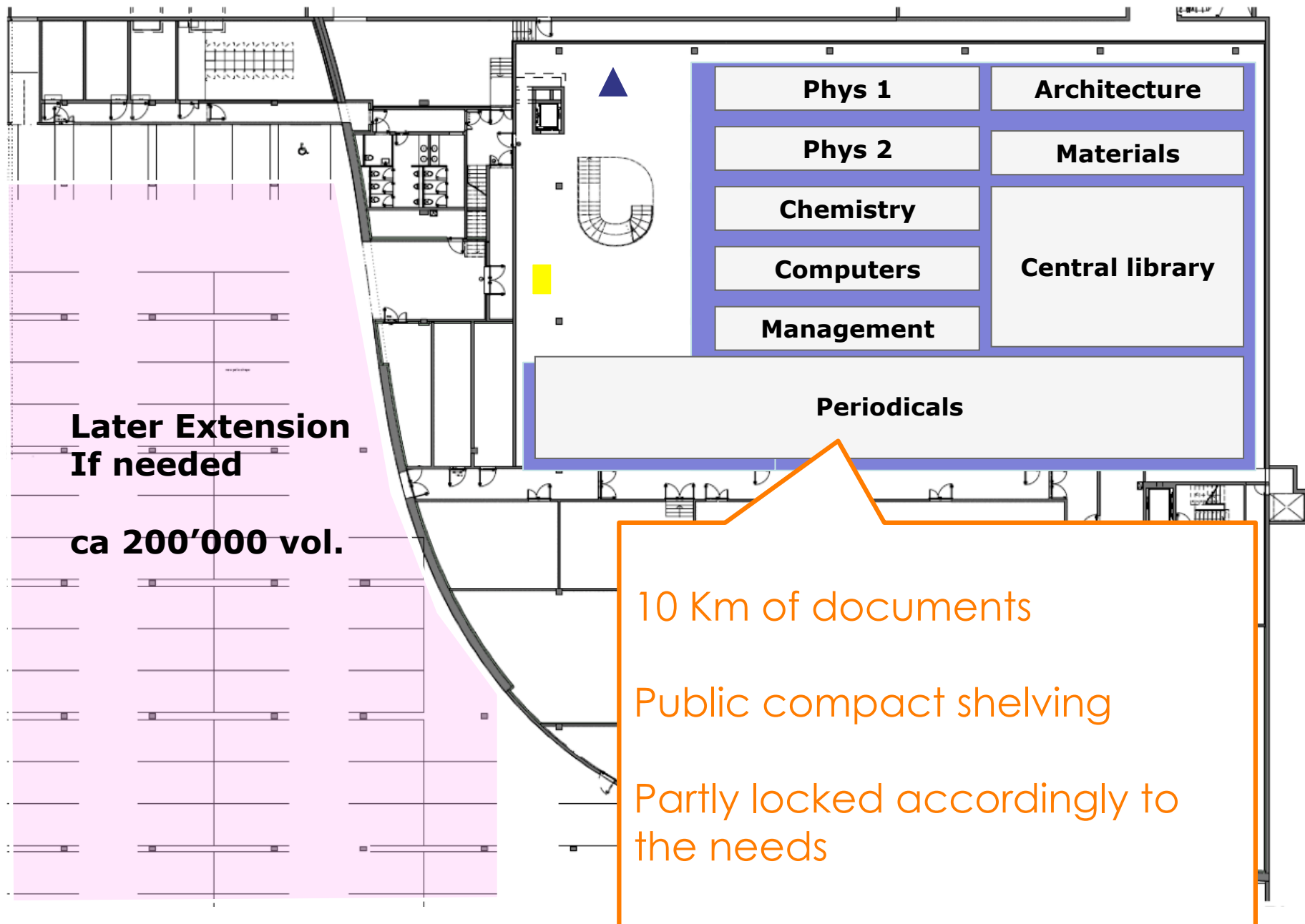
11.000 e-Journals, 15.000 e-books, 10.000 monogr./year



# Facilities and Collections : ground floor



## Facilities and Collections : basement



## Services of the library

- **RLC Opening hours :**

7h30 – 24h	Mo-Fri	Free access, RFID automatic lending, scan, print, copy, wifi
9h – 24h	Sat–Sun	

- **Library Desk :**

8h – 20h	Mo-Fri	Professionals : Enquiries, reference, ILL, troubleshooting, training
Other schedule		Students : Limited service, safety

- **IT Help desk :**

11h – 20h	Mo-Fri	Students : Troubleshooting for laptops, software, network access
-----------	--------	--



Team  
Organisation  
Skills

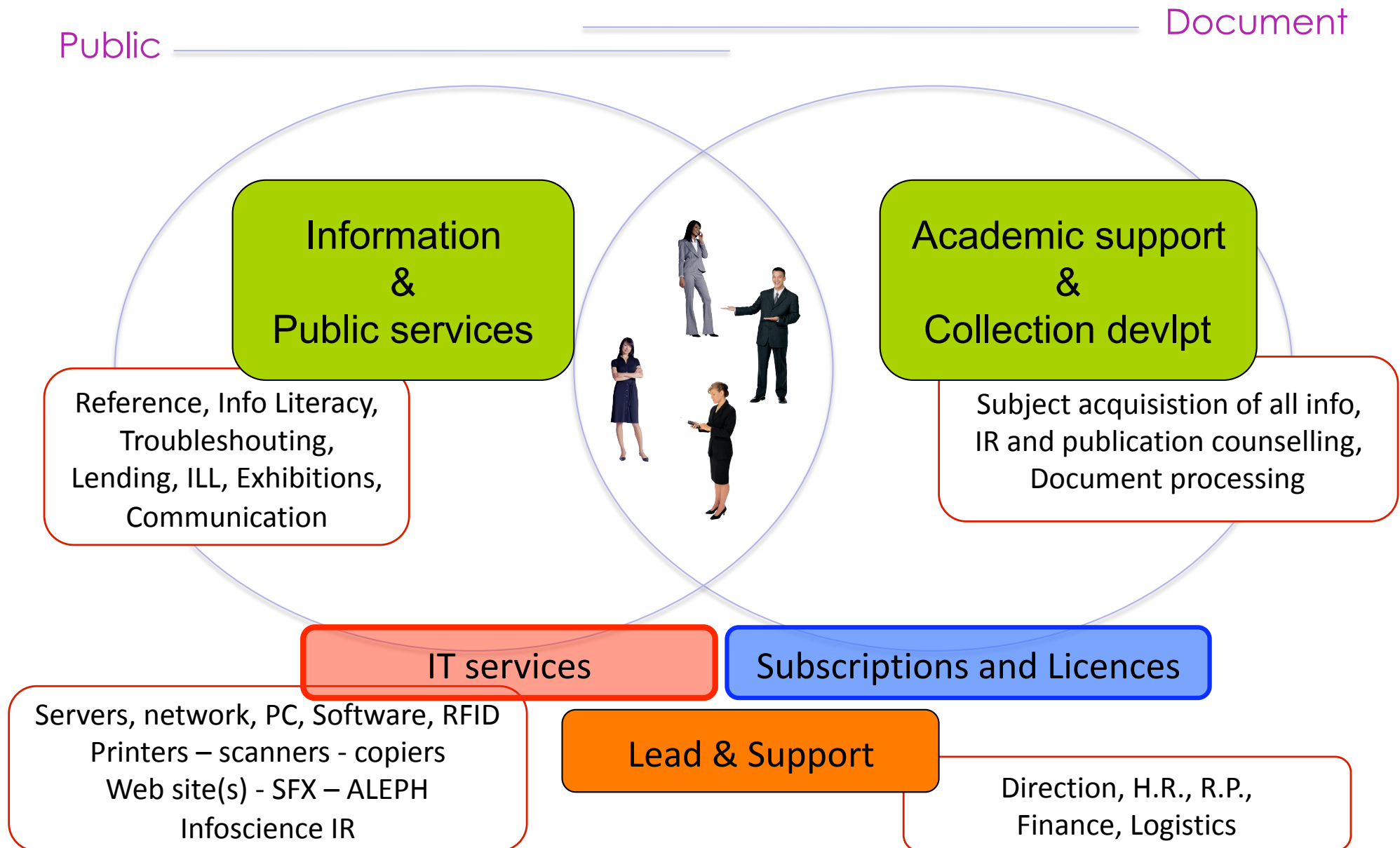
# The Team : Prepared for the shock

The RLC Library has been in our mind for years

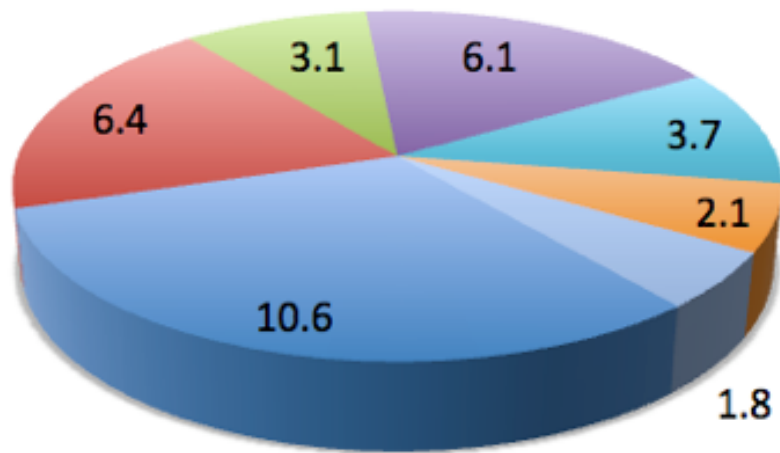




# Flat Organisational chart / Versatility as a virtue



# Duties of the RLC Library team



Total = 33.8 FTE

- Information, desk, public services, virtual reference
- Acquisitions, Collection management
- Subscriptions and licences, OPAC updating and linking
- Projects and team management
- IT services and support for users+staff
- Lead, administrative support, training
- Logistics, mail, general work and maintenance

## How important are traditional and (yet) non conventional skills

- Traditional library skills for document acquisition and processing
- Institutional archive management, publication workflows
- Scientific knowledge
- E-resources negotiation and management
- IT technologies 2.0 (OAI-PMH, API, Firefox plugins, ...)
- ILS technologies 0.2
- Training skills
- Communication and marketing
- Exhibitions and cultural activities
- ...



## Conclusion

	BIOTOPE	INFORMATION GATEWAY	SCHOOL
<b>21st C. Academic Library</b>  <b>as place and facility</b>	<p>A place for work and life for the students</p> <p>A meeting place for the others</p> <p><u>It provides an help for success in everyone's projects</u></p>	<p>Organised access to <u>all</u> the information resources in the world</p> <p><u>With an emphasis on the most useful</u></p> <p><u>Whatever the media</u></p>	<p>Transmission of a culture of information</p> <p>i.e. the capacity to</p> <ul style="list-style-type: none"> <li>- search</li> <li>- criticise</li> <li>- make use</li> <li>- produce information</li> </ul>

**Provides  
&  
Goes**

More  
Comfort  
Services

More  
Access  
Flexibility

Beyond  
Google

See you on the 22nd of Feb. 2010



Merci de votre attention  
Thank you for your attention  
<http://learningcenter.epfl.ch>