



21st Century Libraries: Changing Forms, Changing
Challenges, Changing Objectives
8th Frankfurt Scientific Symposium:
3.11.2008 - 4.11.2008

d-475 days On the way towards the Library of the Rolex Learning Center



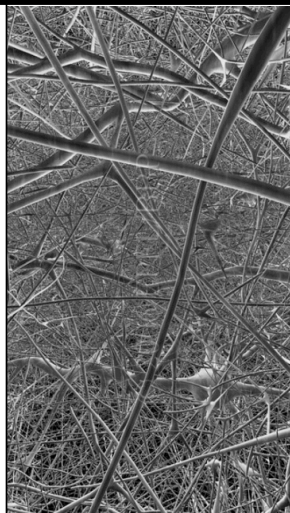
David.Aymonin@epfl.ch

This is not an Introduction

EPFL's Missions



Education – Research – Tech Transfer

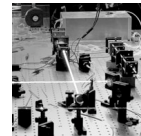
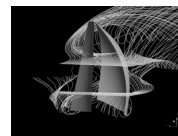
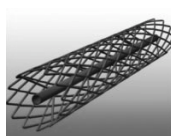
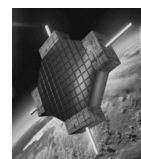


A short film « Reception of the new students 2008 »

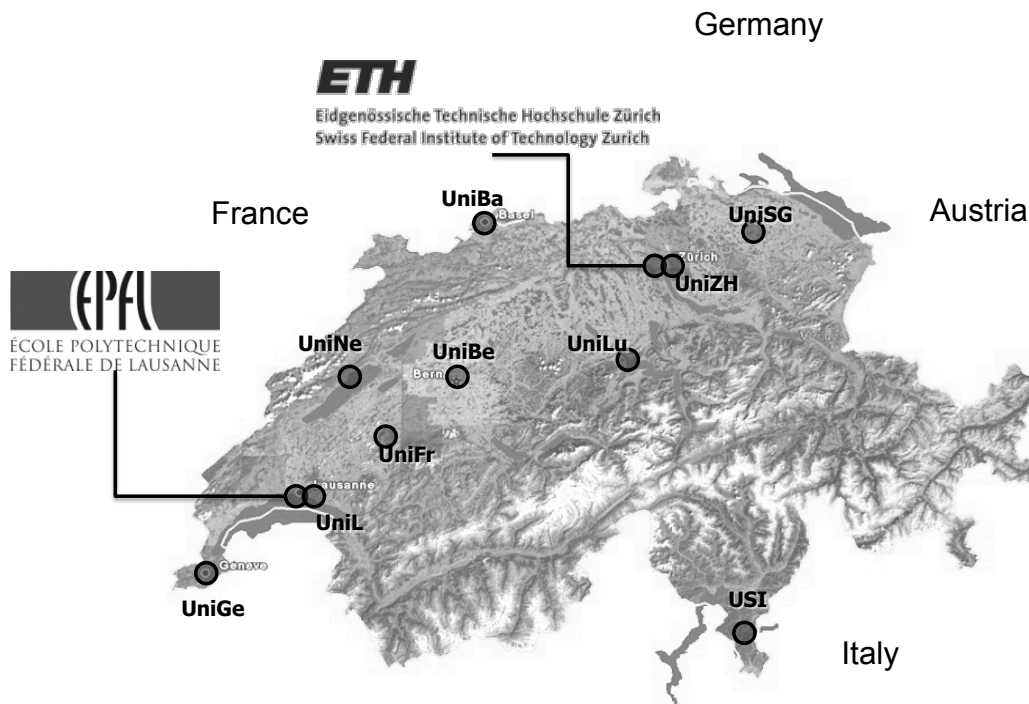
French + English versions available online

<http://ditwww.epfl.ch/cgi-bin/EPFLTV/home.pl?>

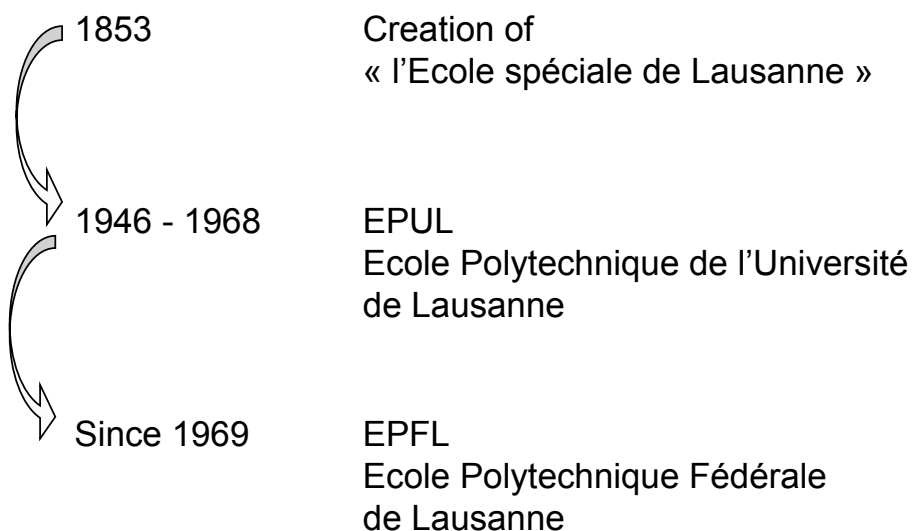
[page=video&lang=1&connected=0&id=426&plugin=9&plugin=1&checkplugi=1](http://ditwww.epfl.ch/cgi-bin/EPFLTV/home.pl?page=video&lang=1&connected=0&id=426&plugin=9&plugin=1&checkplugi=1)



EPFL is one of the 2 **Swiss Federal institutes of Technology**,
nearby 10 Cantonal Univ.



EPFL, 155 years of engineering



from 1978 to 2008, transferred to Ecublens, still growing up

6'500	Students	Federal money	: 450 Mio CHF
270	Professors (<i>FTE</i>)	Grants and contracts	: 140 Mio CHF
3'500	Staff		

Switzerland is a world in itself, EPFL too

One of the world's most international campuses!
(Times, Higher Education Suppl., 2004)



- 112 nationalities on campus
- 60% of faculty from abroad
- 40% foreign students (MS: 34.5%, PhD: 68%)

Proud to compete well in « the race »

Newsweek International Edition

The Top 100 Global Universities, 2006

1.	Harvard University	USA
2.	Stanford University	USA
3.	Yale University	USA
5.	California Institute of Technology	USA
7.	University of California at Berkeley	USA
6.	University of Cambridge	GB
7.	Massachusetts Institute Technology	USA
9.	Oxford University	GB
11.	University of California at San Francisco	USA
12.	Columbia University (New York)	USA
13.	University of Michigan at Ann Arbor	USA
14.	University of California at Los Angeles	USA
15.	University of Pennsylvania	USA
	Duke University	USA
	Princeton University	USA
16.	Tokyo University	J
17.	Imperial College London	GB
18.	University of Toronto	CAN
19.	Cornell University	USA
20.	University of Chicago	USA
21.	Swiss Federal Institute of Technology in Zurich	CH
22.	University of Washington at Seattle	USA
23.	University of California at San Diego	USA
24.	Johns Hopkins University	USA
25.	University College London	GB
26.	Swiss Federal Institute of Technology in Lausanne	CH
27.	University Texas at Austin	USA
28.	University of Wisconsin at Madison	USA
29.	Kyoto University	J
30.	University of Minnesota Twin Cities	USA

EPFL No. 6
in Europe

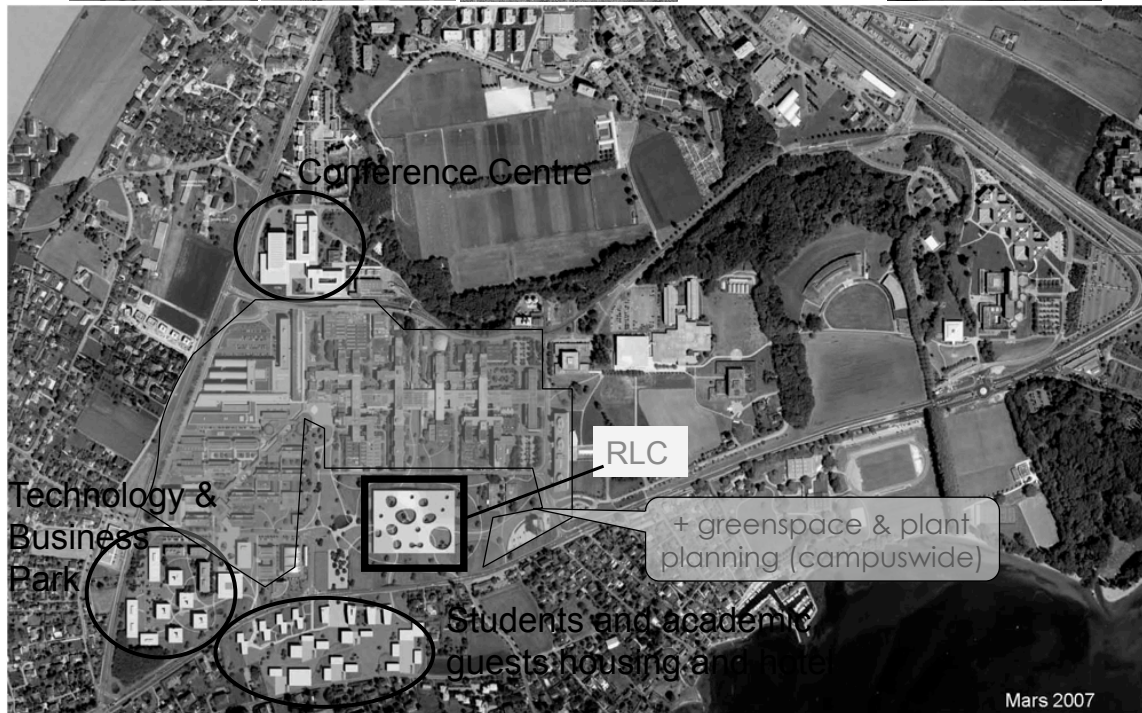
Academic Ranking of World Universities

Top 100 world universities in Engineering/Technology and Computer Sciences, 2008

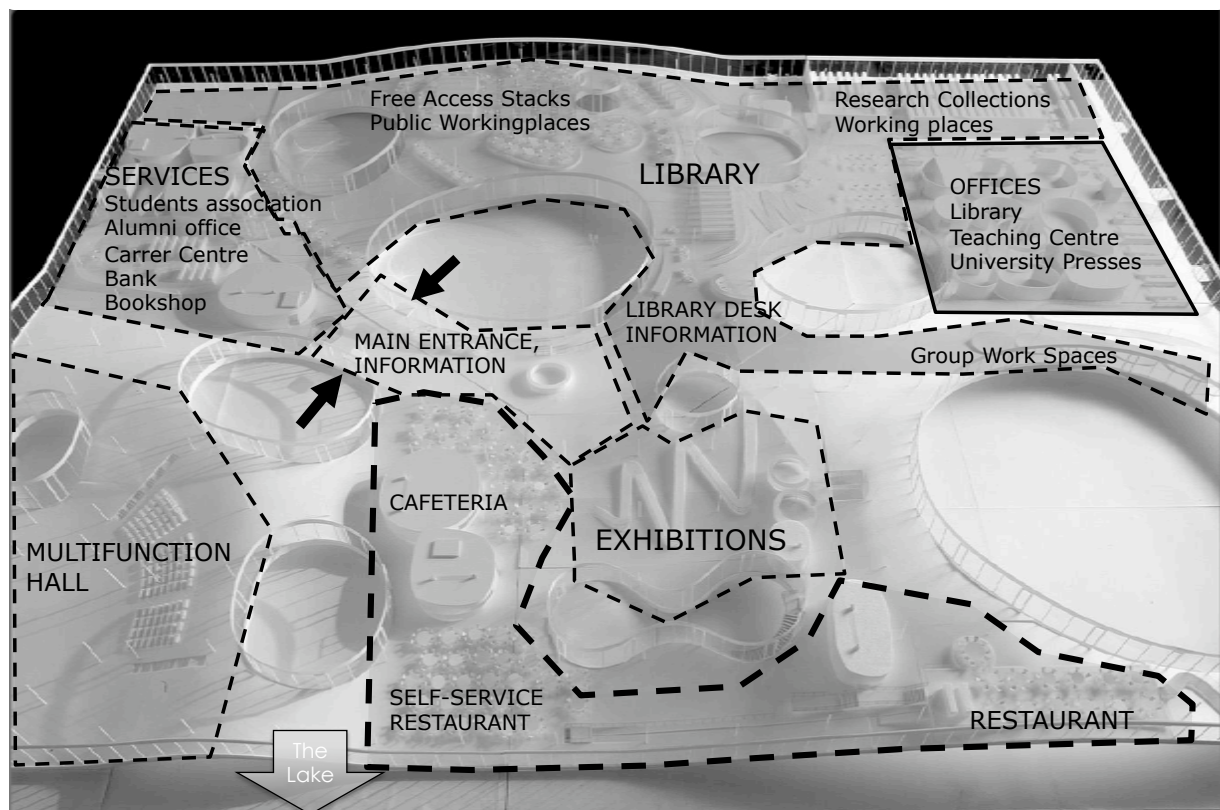
1	Massachusetts Inst Tech (MIT)	USA
2	Stanford Univ	USA
3	Univ Illinois - Urbana Champaign	USA
4	Univ California - Berkeley	USA
5	Univ Michigan - Ann Arbor	USA
6	Univ Texas - Austin	USA
7	Carnegie Mellon Univ	USA
8	Georgia Inst Tech	USA
9	Pennsylvania State Univ - Univ Park	USA
10	Univ California - San Diego	USA
11	Univ Southern California	USA
12	California Inst Tech	USA
13	Univ California - Santa Barbara	USA
13	Univ Maryland - Coll Park	USA
15	Univ Cambridge	UK
16	Cornell Univ	USA
17	Purdue Univ - West Lafayette	USA
18	Swiss Fed Inst Tech - Lausanne	Switzerland
19	Tohoku Univ	Japan
20	Northwestern Univ	USA
21	Univ Toronto	Canada
22	Ohio State Univ - Columbus	USA
23	Kyoto Univ	Japan
24	Princeton Univ	USA
25	Imperial Coll London	UK
25	North Carolina State Univ - Raleigh	USA
27	Univ Washington - Seattle	USA
27	Univ Wisconsin - Madison	USA
29	Natl Univ Singapore	Singapore
29	Tokyo Inst Tech	Japan
31	Univ Minnesota - Twin Cities	USA

EPFL No. 2
in Europe

EPFL's major project « Campus 2010 »



With the Rolex Learning Center as its heart




How did we get there ?
Comment en sommes-nous arrivés là ?

The needs of our EPFL community have evolved

- Increase from 2000 → 7000 students
- Ambition : High quality teaching / Cutting edge research
- New goals :
« make our students the entrepreneurs of their knowledge»
- « focus groups » have revealed the expectations of the EPFL inhabitants :
 - Students and guests housing
 - International conference center
 - A real campus, living 24h/7
 - With a LIBRARY as its heart

Since 1994, Internet has changed our lives
...and also our minds

22 août 2008

S'ABONNER
→ AU TEMPS

LETEMPS.CH

LE JOURNAL

- Sommaire complet
- Editorial
- Zooms
- Temps fort
- International
- Suisse
- Régions
- Economie
- Finance
- Sports
- Société
- Culture
- Eclairages
- Courrier lecteurs
- Météo

LA FINANCE

- Finance
- Fonds placement
- Marchés
- Economie

RECHERCHE

PAR DATE | AVANCÉE

TEMPS FORT

Le Temps | Article

Internet nous rend-il idiots?

• Le numérique modifie nos façons de lire, d'apprendre, de nous concentrer. Controverse.

Luc Debraine
Vendredi 22 août 2008

A chaque fois, c'est la m
l'apparition de l'écriture
écrit à la place d'une idé
perdre la mémoire aux
humanistes ont eu peur
imprimés rende les être
et moins portés sur l'éti
coincidé avec l'angoisse
clercs soit soudain cont
propagation de révolutio
qu'apparaît un nouveau
distribuer le savoir et l'i
pour crier à l'abêtissem

THE CHRONICLE OF HIGHER EDUCATION

Today's News

Tuesday, August 26, 2008

Scholars' View of Libraries as Portals Shows Marked Decline

By JENNIFER HOWARD

Know your library user—and worry about not using the library. That's the main advice librarians in a new white paper that notes growing ambivalence about the campus li among faculty members as more and more knowledge goes digital.

The report was released last week by Itha nonprofit organization that promotes the technology in higher education. The paper the relationship between libraries and the institutions of all sizes, and how the digital altering that relationship.

The report confirms what everyone already knows—that electronic resources are ever more central to scholarly activity. It emphasizes that scholars still value libraries as buyers and archivers of scholarship, and many still use them as gateways to scholarly information. However, it also confirms that researchers increasingly find what they need through Google Scholar and other online resources, a trend the report's authors anticipate will accelerate as more and more knowledge goes digital.

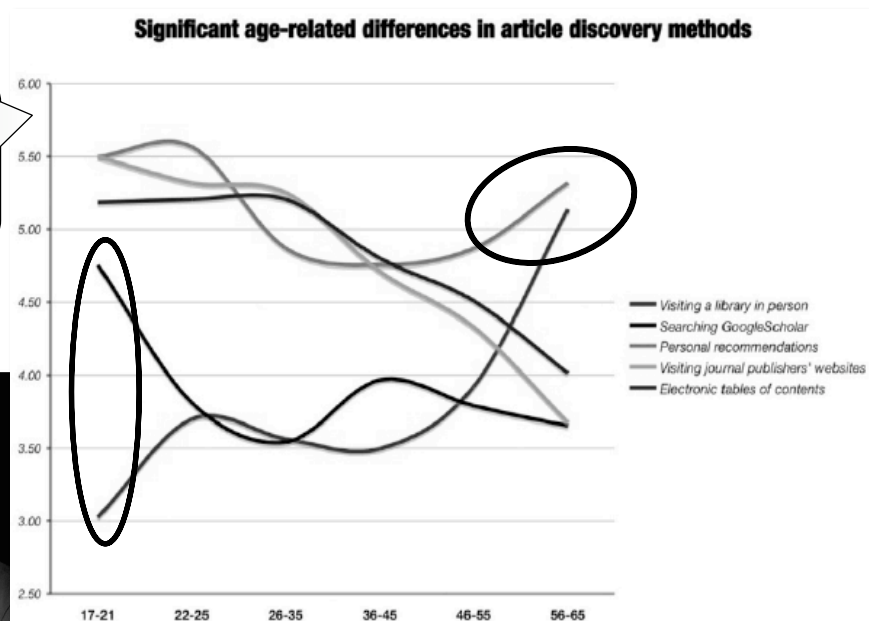
Googelization is a fact...
of generation

Relative value given by academics to scientific sources in order to find a scientific paper



information behaviour of
the researcher of the future
11 January 2008

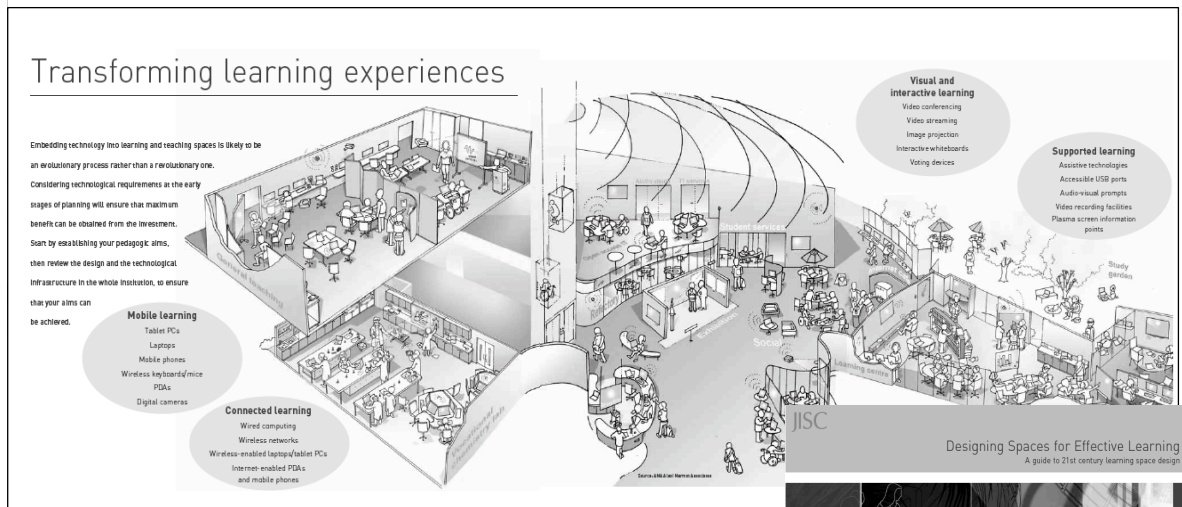
UCL



- Search engine as the 1st used tool
- Importance of Expertise, social network

<http://www.bl.uk/news/pdf/googlegen.pdf>

Learning is nowadays « augmented » and « embedded »...
thanks to the technology and ... to the teachers too !



[http://www.jisc.ac.uk/
eli_learningspaces.html](http://www.jisc.ac.uk/eli_learningspaces.html)



Indeed, we are now living the Digital age... but it is also analogic !



How many documents can you see ?

Our students use the library



The Rolex Learning Center
is an attempt to create an academic library
adapted to these changes

A concept for the 21st c. Academic Library

All buildings are predictions.

All predictions are wrong

... but it is possible to design buildings

so that it doesn't matter if you are wrong.

Stewart Brand (cited by Les Watson)

21st Century Library

- A couple of issues for all libraries are **how to deal with the legacy of paper based materials in an increasingly electronic world**, and **how to move the focus to people and learning**.
- The Learning Center holds the complete University Library collection ... and provides the full range of Library services.
- ... The **bookstock was split into 2 sequences** - books that we know are borrowed regularly (about 25% of the stock) and those that are browsed.
- The borrowed stock is available on **open shelves** ... and the browsed stock is housed in **moveable compact shelving**.

Les Watson, about the Saltire Caledonian Learning Centre, Glasgow

It is a very complex space

- EPFL Learning Center Architectural program in 2003
- International architecture Competition in 2004

• Personal Work

- Silence & Isolation
- Interaction & Group
- Teaching & Learning

- Personal Development
- Culture
- Science Centre

- Book shop
- History of Science, Ancient books
- Exhibitions
- Conferences & cultural events

• Comfort and Well-being

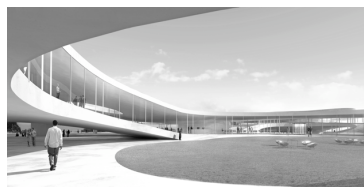
- RFID, WiFi, Scan-Print-Copy on-demand
- Food & Beverages
- Security & Privacy

Among 12 projects

...The project offers an interesting prolongation of and analogy with the philosophy adopted during the first stage of the EPFL's construction : *importance of itinerary, movement, interior courtyards with different surroundings, atmospheres, richness of vegetation, uniqueness and unity whilst still creating diversity...* The proposed programme offers a new living space, opens up the possibility of new teaching approaches, everything being integrated into one single building as place of assembly and breeding-ground for *enriching encounters and synergies...*

Sanaa, Tokyo

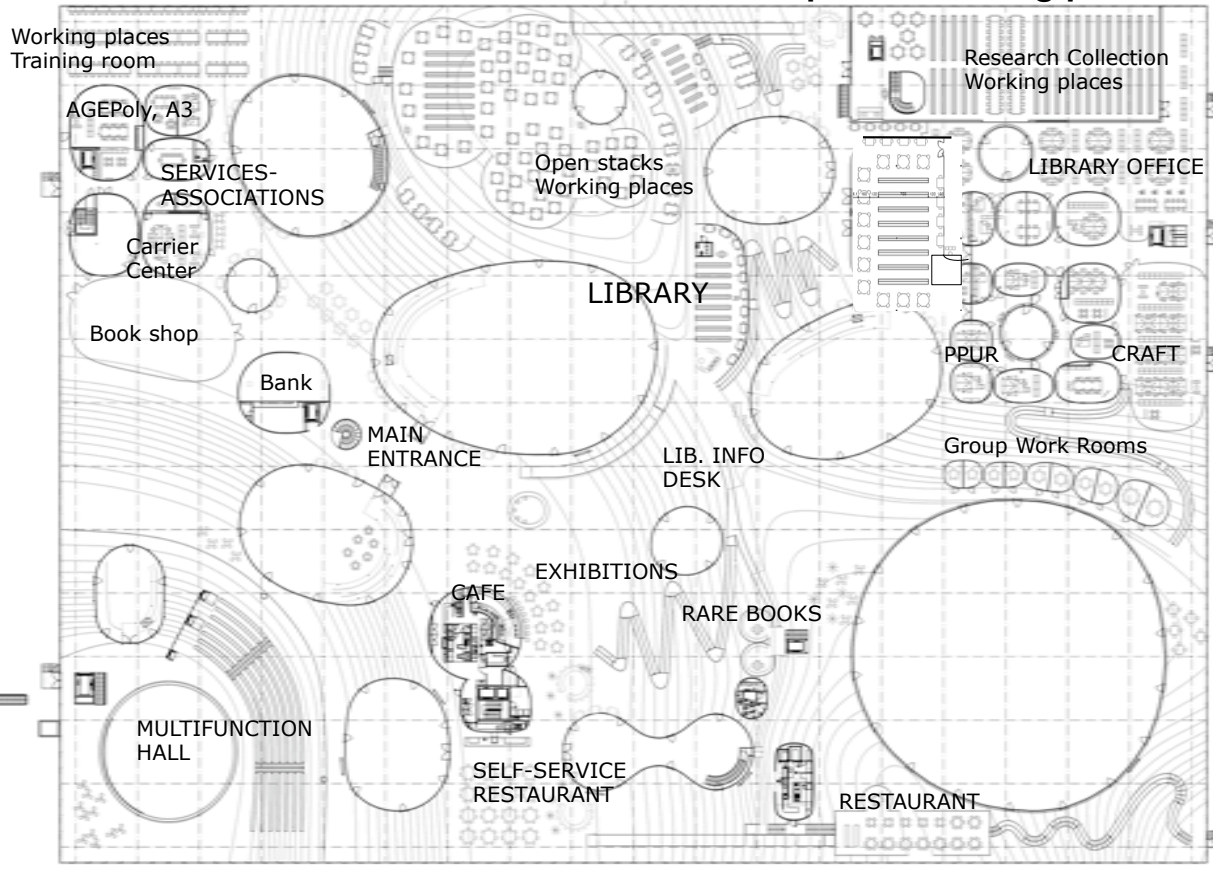
Kazuyo Sejima
Ryue Nishizawa





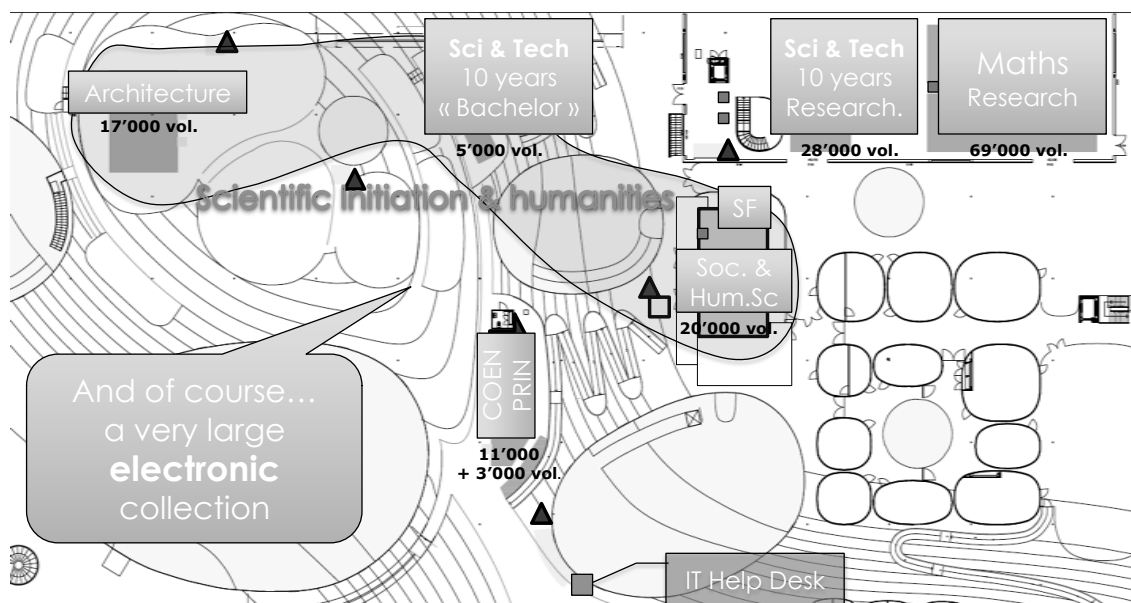
RLC : Main functions

Total : 830 public working places



WORKING SEATS

What the Library will be : ground floor

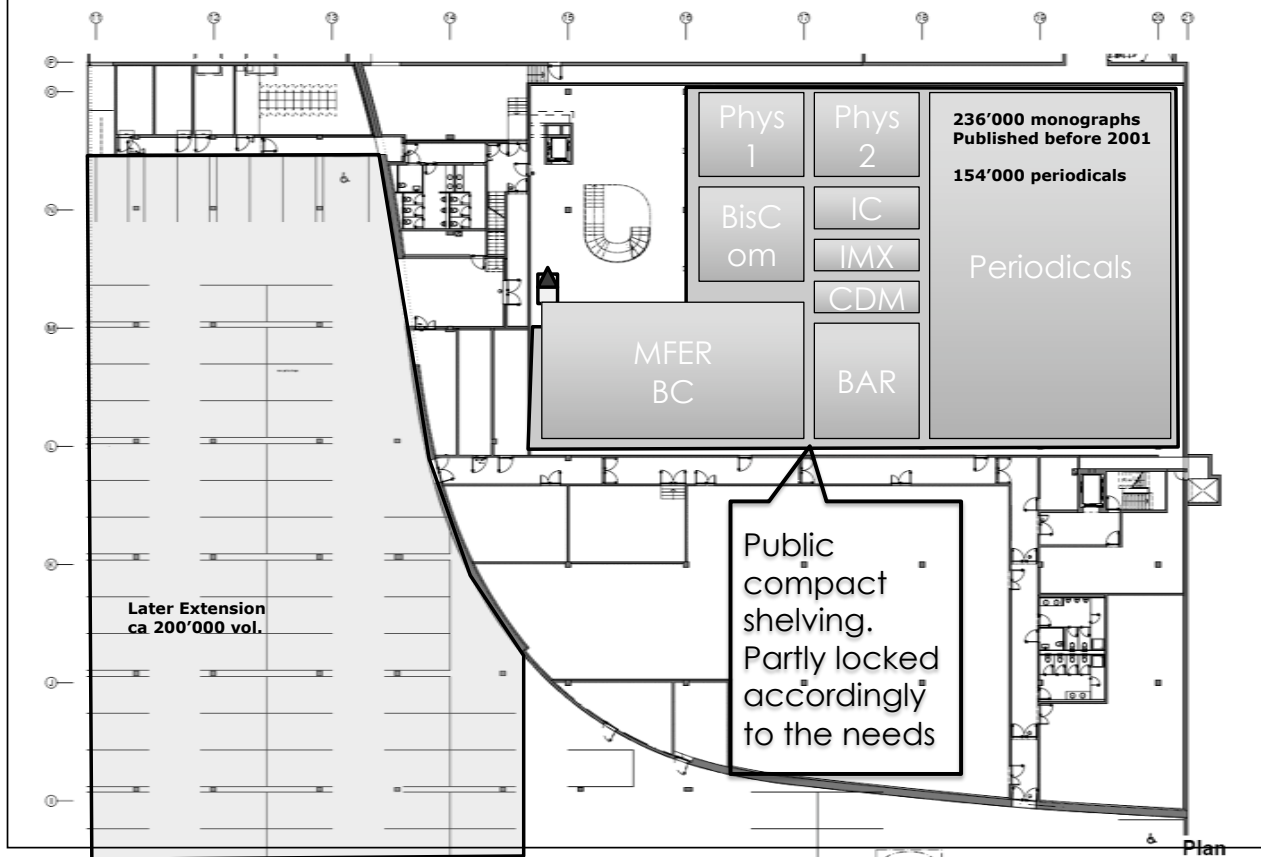


Merging collections, team and services of Central + 9 branch libraries :
 Architecture, Chemistry, Physics 1, Physics 2, Mathematics, Materials, Computer sciences, Pedagoggy, Management

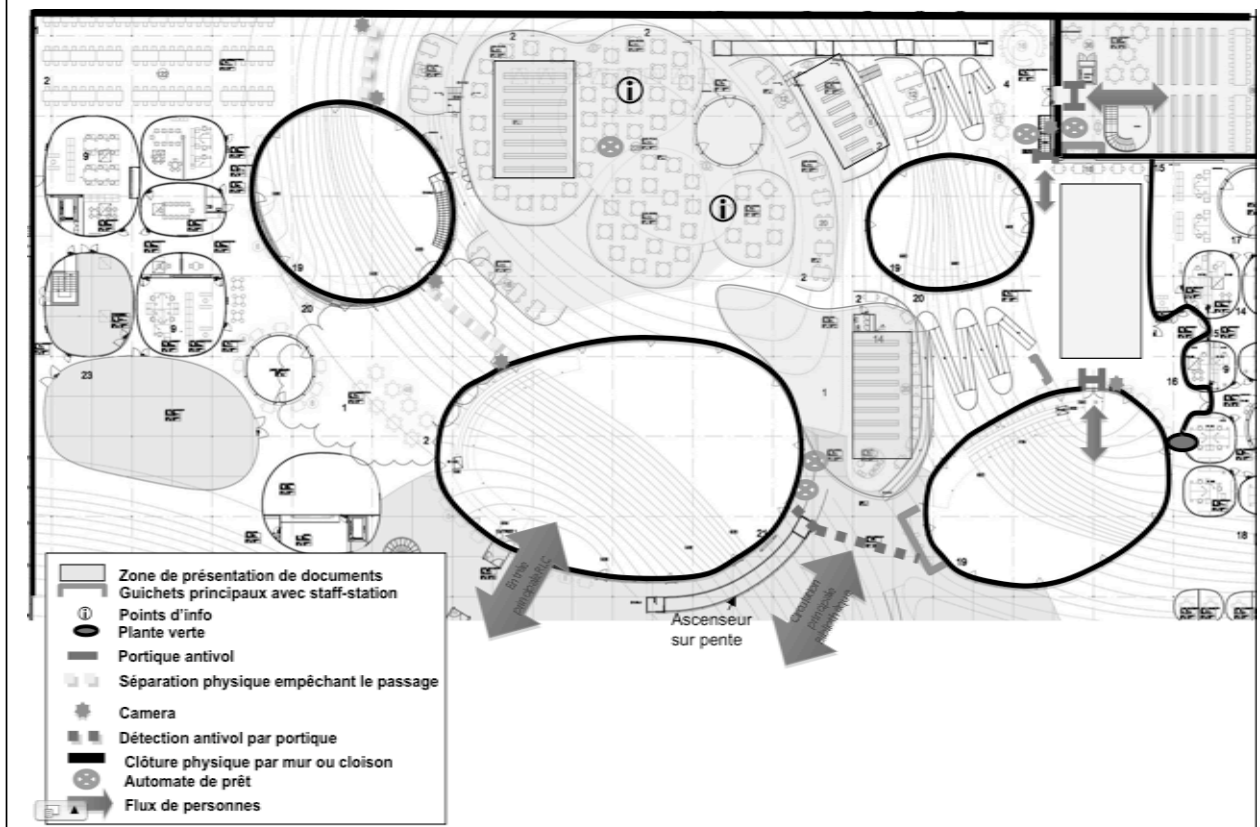
« Bachelor » collection
 56'000 vol. in open access

« Research » collection
 97'000 vol. in open or controlled access

What the Library will be : basement



RFID circulation and security system



Conclusion

	BIOTOPE	FLEXIBLE TANK	SCHOOL
Library of the RLC	A place for work and life for students <u>It provides an help for a better success</u>	Organised access to <u>all</u> the information resources in the world <u>With a valorization of the most useful</u> <u>Whatever the media</u>	Transmission of a culture of information i.e. the capacity to - search - criticise - make use - produce information
Goals 2010	Only one library Multifunctional opened 20h/24h + comfort + services	Full integration in the numerical environment of the users IR as a pillar of the scientific reputation of EPFL + access Print collection RFID tagged and managed Book delivery « à la place »	Information literacy courses at Bachelor & Master level Stronger than Google IL integrated in curricula « Flying Librarians », in permanent contact with faculty and students outside the library « Stand on the shoulders of the Giant »

See you on the 22nd of Feb. 2010



Danke für Ihre Aufmerksamkeit
Thank you for your attention
<http://learningcenter.epfl.ch>