

# Optimal Pricing Strategy for Wireless Social Community Networks

Amin Mazloumian

LCA, EPFL, Lausanne, Switzerland  
seyyedamin.mazloumian@epfl.ch

Mohammad Hossein Manshaei

LCA, EPFL, Lausanne, Switzerland  
hossein.manshaei@epfl.ch

Mark Félegyházi

EECS, University of California at Berkeley  
felegyha@eecs.berkeley.edu

Jean-Pierre Hubaux

LCA, EPFL, Lausanne, Switzerland  
jean-pierre.hubaux@epfl.ch

## ABSTRACT

The increasing number of mobile applications fuels the demand for affordable and ubiquitous wireless access. The traditional wireless network technologies such as EV-DO or WiMAX provide this service but require a huge upfront investment in infrastructure and spectrum. On the contrary, as they do not have to face such an investment, social community operators rely on subscribers who constitute a community of users. The pricing strategy of the provided wireless access is an open problem for this new generation of wireless access providers. In this paper, using both analytical and simulation approaches, we study the problem comprised of modeling user subscription and mobility behavior and of coverage evolution with the objective of finding optimal subscription fees. We compute optimal prices for wireless social community networks with both static and semi-dynamic pricing. Coping with an incomplete knowledge about users, we calculate the best static price and prove that optimal fair pricing is the optimal semi-dynamic pricing for social community operators in monopoly situations. Moreover, we have developed a simulator to verify optimal prices of social community operators with complete and incomplete knowledge. Our simulation results show that the optimal fair pricing strategy significantly improves the cumulative payoff of social community operators.

## 1. INTRODUCTION

With the growth of mobile applications, ubiquitous wireless access in urban areas has become an essential demand. Traditional licensed band operators provide full coverage with high initial costs to construct the service infrastructure. The infrastructure is mainly comprised of base stations and licensed spectrums. Wireless access providers that use WiMAX, EV-DO (Evolution-Data Optimized [1]), or

3G technologies are instances of this type. On the contrary, *wireless social community* operators are set up at much lower costs and provide wireless coverage by the unlicensed band access points activated by subscribers who constitute a community of users. Presently, FON [3] is the largest wireless social community operator. In February 2006, FON announced that it had received \$21.7 million in equity financing from the Internet giants Google and Skype, and from the venture capital firms Index Venture and Sequoia Capital. They also made strategic agreements with the most popular ISPs, such as Cegetel in France with more than half million subscribers and BT in England with three millions users. This should enable them to increase their service coverage [2].

Relying on access points activated by users provides a viable alternative to the deployment of costly base stations and to the use of licensed spectrums for wireless communication. However, as the willingness of users to join such a community determines its evolution, there is no guarantee that the wireless social community network will reach full coverage in the whole service area. This willingness typically depends on various factors, such as the subscription fee, the network and service preference and the mobility of users. In this paper, we model user subscription and mobility behaviors in different scenarios to assess the evolution of the wireless social community network. Users subscribe to wireless operators according to the observed wireless coverage and subscription fees. In our model, we characterize different users by their time and space probability distributions in a graph based mobility model. We compute optimal prices for a social community operator with static and semi-dynamic pricing. Assuming an incomplete knowledge about users, we show that fair pricing (when prices are proportional to the provided coverage) is an optimal strategy when the operator has to determine all its prices at the first instant (i.e., semi-dynamic pricing). Furthermore, we have developed a simulator, called *community simulator* [4], to verify optimal prices of social community operators with complete and incomplete knowledge, and optimality of the fair pricing strategies. At the beginning of each simulation, operators of the simulator are capable of predicting the best static prices based on their knowledge about the mobile users and the city map. The simulator is described with the obtained numerical results and is publicly available [4]. To the best of our knowledge, this paper is the first to provide a detailed

This is an extended version of the paper that is to appear under same name in ACM NetEcon 2008. It includes proofs that were skipped in the original paper due to space considerations.

analysis (modeling and simulation-based study) of pricing strategies for this new type of wireless access providers.

In [5], Manshaei et al. investigate the competition between wireless social community and traditional licensed band operators with a game-theoretic approach. However, no mobility model is considered for users and the quality of service of wireless social community operator is proportional with the fraction of subscribed users with same value for all users. Whereas in our model, users choose destinations with different probability distributions and they explicitly assess the usefulness of the service by observing the wireless coverage provided by the social community and decide to subscribe based on their observations of coverage, e.g., a user with an access point near his home observes different wireless coverage from the user with no access points around his home. In our model, wireless social community operators may set lower prices for the users whose homes are near public places. Therefore, different prices may be adjusted for subscribers.

The paper is organized as follows. In Section 2, we explain our system model. In Sections 3 and 4, we discuss the pricing problem with static and fair pricing strategies. In Section 5, we present the *community simulator* in detail. In Section 6, we analyze numerical results and finally we conclude in Section 7.

## 2. SYSTEM MODEL

Our system model represents a service area in which a social community operator provides wireless access for a set of mobile users  $N$  who intend to subscribe to the service. In our model *decision times* are instants of time at which the operator decides on prices of its service and users subscribe to or unsubscribe from the operator. We assume decision times are at the end of each month. Index  $m$  designates the sequential order of decision times, i.e.,  $m \in \{0, 1, 2, \dots\}$ . *Observation times* are instants of time at which each user observes if he is provided with wireless access by the operator between decision times. There are  $T_o$  observation times between each two decision time, i.e.,  $t \in \{1, 2, \dots, T_o\}$ .

### 2.1 System Graph

We introduce a graph to model a city consisting of buildings, roads and access points. Buildings and road junctions are represented by graph vertices and road segments are represented by graph edges. Our definition of system graph should be rich enough to model the mobility of users and the topology of cities. The *System graph*,  $M = (V, E)$ , is a finite, planar, connected, weighted graph, where  $V$  is the finite set of vertices (nodes) and  $E$  is the finite set of bi-directional weighted edges. Nodes of the system graph are either road nodes or building nodes, as shown in Figure 1. A node is a *building node* if its degree is equal to one.  $B$  denotes the set of building nodes  $B = \{v \in V \mid \text{degree}(v) = 1\}$ . A node is a *road node* if it is not a building node.  $R$  denotes the set of road nodes  $R = V \setminus B$ . Building nodes are divided into three disjoint subsets: residential nodes  $H$ , workplaces  $W$  and public places  $J$ . A *residential node* is a building node to which a user is assigned as its owner. The building node assigned to a user represents his home.  $n_h$  denotes the home of user  $n$ . *Workplace nodes*  $W$  represent workplaces of mobile users. There is a one-to-many mapping from the set of workplace nodes  $W$  to the set of all mobile users  $N$ .  $n_w$  denotes the workplace of user  $n$ . Places such as shopping

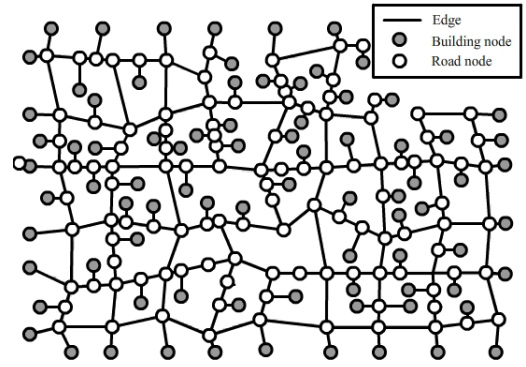


Figure 1: A System graph is a planar connected graph. The degree of building nodes is equal to one. The weights of edges are not shown in this figure.

centers, restaurants and parks are represented by the set of *public place nodes*  $J$ . In order to simplify wireless coverage formulation, we introduce a binary function on pairs of nodes:

DEFINITION 1. Let  $d_e$  be the effective range of access points. The range function  $d : V \times V \mapsto \{0, 1\}$  is defined as:

$$d(v, v') = \begin{cases} 1 & \text{if } |v - v'| < d_e \\ 0 & \text{otherwise} \end{cases}$$

### 2.2 Social Community Operator

Each user activates an access point in his house when he joins the community by subscribing to the operator. In our model, the social community operator  $\mathcal{S}$  is represented by  $\mathcal{S} = (N^{\mathcal{S}}, P, AP[0])$ , where  $AP[0]$  is the initial set of nodes on which an access point belonging to  $\mathcal{S}$  is active;  $N^{\mathcal{S}}$  is the set of its subscribed users at decision times  $N^{\mathcal{S}} = \{N^{\mathcal{S}}[1], N^{\mathcal{S}}[2], \dots\}$ , and  $P$  is the set of its price sets for users at decision times  $P = \{P[1], P[2], \dots\}$ , where  $P[m] = \bigcup_{n \in N^{\mathcal{S}}[m]} P_n[m]$  and  $P_n[m]$  is the price of operator  $\mathcal{S}$  for user  $n$  at decision time  $m$ . To specify our definition of social community operator we use the coverage function with the following definition:

DEFINITION 2. Coverage function  $C[m]$  for an operator at decision time  $m$  is defined as:

$$C(v, m) = \begin{cases} 1 & \text{if it provides service on } v \text{ at decision time } m \\ 0 & \text{otherwise} \end{cases}$$

In our model, we assume all initial access points of social community operator  $\mathcal{S}$  have been placed on public place nodes  $J$  and workplace nodes  $W$ . Because these operators negotiate with owners and managers of public places and workplaces to make their service observable for potential mobile users. As the negotiation is not a part of our discussion, we assume that the initial access point locations  $AP[0]$  of social community  $\mathcal{S}$  are given at time 0, and the operator never activates any other access point on public places or workplace nodes. In other words,  $AP[0] \subseteq (J \cup W)$ . We also assume that if all mobile users activate access points in their home nodes for the social community, there would be full coverage for all nodes of the system graph, i.e.,  $C(v, m) = 1$ . Note that, in some cities the community operators cannot

provide full coverage even when all users subscribe to the service. Considering the above assumptions, the access point locations of any social community operator  $\mathcal{S}$  are the residential nodes of subscribed mobile users or  $AP[0]$ . Hence, by using Definition 1, we can rewrite the coverage function presented in Definition 2 for operator  $\mathcal{S}$  as:

$$C(v, m) = \begin{cases} 1 & \exists x \in (AP[0] \cup N^{\mathcal{S}}[m]) | d(x, v) = 1 \\ 0 & \text{otherwise} \end{cases}$$

The pricing strategy of an operator is *static* if it does not change its price set at decision times, i.e.,  $P[m] = P[1]$ . The pricing strategy of an operator is *semi-dynamic* [6] if it determines its price set of all decision times at decision time  $m = 0$ . The payoff of social community operator  $\mathcal{S}$  for month  $m$  is then:

$$u[m] = \sum_{n \in N^{\mathcal{S}}[m]} P_n[m]. \quad (1)$$

We can also calculate the *cumulative payoff*  $U[m]$  of the operator at decision time  $m$  by:

$$U[m] = \sum_{i=1}^m u[i]. \quad (2)$$

In our model, we say that the price sets  $P$  and  $P'$  are *equivalent*, if and only if:

$$\lim_{m \rightarrow \infty} \frac{U[m]}{U'[m]} = 1, \quad (3)$$

where  $U[m]$  and  $U'[m]$  are the cumulative payoffs of the operator with price sets  $P$  and  $P'$ , respectively.

## 2.3 User Model

Mobile users observe coverage provided by the operator at each observation time and at the following decision times they may subscribe or unsubscribe from the operator. In this section we explain different parameters of mobile users that determine their mobility and subscription behaviors.

### 2.3.1 Mobility

In our model, the mobile users move between nodes with a modified version of graph-based random waypoint algorithm [8], i.e., instead of choosing a random destination, mobile users choose their destination node with distribution  $D^{ch}$ . For any user  $n$ , *destination choice distribution*  $D_n^{ch}$  indicates the probability that he chooses any building node  $v \in B$  as his next destination. In other words, if he chooses destination at any observation time  $t$ , then  $D_n^{ch}(v, t)$  is the probability that  $n$  chooses  $v$ . We also assume that if mobile user  $n$  chooses a public place node as his destination, his choice is uniform among the set of public place nodes  $J$ :

$$D_n^{ch}(j, t) = \frac{1}{|J|} \sum_{j' \in J} D_n^{ch}(j', t) \quad \forall j \in J \quad (4)$$

Similarly, if mobile user  $n$  chooses a destination from other users' houses, his choice is uniform among the set of other users' houses:

$$D_n^{ch}(h^{-n}, t) = \frac{1}{|H| - 1} \sum_{h \in H^{-n}} D_n^{ch}(h, t) \quad \forall h^{-n} \in H^{-n} \quad (5)$$

where  $H^{-n} = H - \{n_h\}$ . A shortest path algorithm (e.g. *Dijkstra* or *Floyd-Warshal* shortest path algorithms [10]) is

used to find a path to the chosen destination. Before moving on the selected route, mobile users randomly choose a speed between ( $speed_{min}, speed_{max}$ ). Upon arrival, users stay at their destinations for an upper bounded random interval.

In our model, the mobility estimation of users is desirable for operators. For any user  $n$ , *presence distribution*  $D_n^x$  indicates the probability that his location is node  $v \in V$  at any observation time  $t$ , i.e.,

$$D_n^x(v, t) = Pr\{\text{location of } n = v, \text{ at observation time } t\}.$$

The expected value of the number of observation times that the location of user  $n$  is node  $v$  would be:

$$E_{D_n^x}(v) = \sum_{t=0}^{T_o} D_n^x(v, t), \quad (6)$$

and the expected value of the number of observation times that his location is one of the nodes of set  $L$  would be:

$$E_{D_n^x}(L) = \sum_{v \in L} E_{D_n^x}(v) = \sum_{v \in L} \sum_{t=0}^{T_o} D_n^x(v, t). \quad (7)$$

Given  $D_n^{ch}$ , computing  $D_n^x$  is not trivial. But, we can compute the expected value of the number of time steps a user spends in his home, workplace, public places and other users' houses, by simulation. Using Equation (4) and (5), we can derive the expected value of the number of observation times that any user spends at public places and other users' houses.

$$E_{D_n^x}(j) = \frac{1}{|J|} \sum_{j' \in J} E_{D_n^x}(j') \quad \forall j \in J \quad (8)$$

$$E_{D_n^x}(h^{-n}) = \frac{1}{|H| - 1} \sum_{h \in H^{-n}} E_{D_n^x}(h) \quad \forall h^{-n} \in H^{-n} \quad (9)$$

### 2.3.2 Coverage Observation

Mobile users observe the coverage provided by the operator expressed in Definition 2, at observation times with the frequency  $f_n$ . For instance,  $f_n$  could be:

$$f_n(v) = \begin{cases} 5 & \text{for } v = n_h \\ 2 & \text{for } (v \in H \wedge v \neq n_h) \\ 20 & \text{for } v = n_w \\ 8 & \text{for } v \in J \end{cases} \quad (10)$$

where user  $n$  has his highest frequency of observations when he is at his workplace. Because, the service is more important for him at his workplace node  $n_w$ . The observed coverage  $Q_n$  for user  $n$  at decision time  $m$  is defined as:

$$Q_n[m] = \frac{\sum_{v \in n_x} (f_n(n_x) \times C(n_x, m))}{\sum_{v \in n_x} f_n(n_x)}, \quad (11)$$

where  $n_x$  is a traversed node between decision times  $m$  and  $m - 1$ . A node may be traversed and counted several times.

### 2.3.3 Subscription and payoff function

Any mobile user  $n$  subscribes to the operator if his payoff is positive. In our model, the *Payoff*  $u_n[m]$  of user  $n$  at decision time  $m$  is defined as:

$$u_n[m] = a_n \times Q_n[m - 1] - P_n[m],$$

where parameter  $a_n$  indicates the importance of provided coverage  $Q_n$  for user  $n$ .  $a_n$  has distribution  $D^{a_n}$  over all users. At each decision time, any mobile user subscribes or stays subscribed to the operator if his payoff is positive. If

a subscribed mobile user's payoff becomes negative, he will unsubscribe from the operator with no penalty. A complete list of system model variables and their definitions are presented in Appendix A.

## 2.4 Shared Knowledge

We assume operators know system graph  $M$ , probability distribution of parameter  $a_n$  and the expected number of observation times users spend in their workplaces, other users' houses, road nodes, public place nodes and at home. Moreover, operators know the frequency of observations  $f_n$ , and subscriptions/unsubscriptions of users at previous decision times.

## 3. STATIC PRICING STRATEGY

Having defined the system model, we can now find an optimal price set for the operators with complete knowledge in different scenarios. The aim of a social community operator with static pricing strategy is to find the optimal price set that maximizes its cumulative payoff. In order to achieve this goal, the operator predicts its cumulative payoff for different price sets and chooses the optimal one.

### 3.1 Pricing with Complete Knowledge

A social community operator with complete knowledge not only knows the distribution of parameter  $a_n$  over all users but also knows the exact value of parameter  $a_n$  of each user. We explain how the operator computes its cumulative payoff for a price set  $P$ . The operator calculates its coverage at decision time 0 from its initial access point locations  $AP[0]$ . With complete knowledge, it determines whether or not each user subscribes to or unsubscribes from it. Therefore, it finds locations of its access points  $AP[1]$  at decision time 1. By repeating this procedure, the operator can calculate its cumulative payoff at any decision time.

Here we describe the computation of coverage  $Q_n$  for any user  $n$  based on access point locations at decision time  $m$ . By knowing system graph  $M$  and locations of access points  $AP[m]$ , operator  $\mathcal{S}$  calculates coverage function  $C$  from which it finds the observed coverage of each user:

$$\begin{aligned} Q_n[m] &= \frac{E_{D_n^x}(f_n \times C)}{E_{D_n^x}(f_n)} \\ &= \frac{\sum_{v \in V} \sum_{t=0}^{T_o} D_n^x(v, t) \times f_n(v) \times C(v, m)}{\sum_{v \in V} \sum_{t=0}^{T_o} D_n^x(v, t) \times f_n(v)} \\ &= \frac{\sum_{v \in V} f_n(v) \times C(v, m) \times E_{D_n^x}(v)}{\sum_{v \in V} f_n(v) \times E_{D_n^x}(v)} \end{aligned} \quad (12)$$

Using Equations (8) and (9), we can rewrite (12) as:

$$\begin{aligned} Q_n[m] &= \frac{f_n(n_h) \times C(n_h, m) \times E_{D_n^x}(n_h)}{\sum_{v \in V} f_n(v) \times E_{D_n^x}(v)} \\ &+ \frac{f_n(n_w) \times C(n_w, m) \times E_{D_n^x}(n_w)}{\sum_{v \in V} f_n(v) \times E_{D_n^x}(v)} \\ &+ \frac{E_{D_n^x}(J) \times \sum_{v \in J} f_n(v) \times C(v, m)}{|J| \times \sum_{v \in V} f_n(v) \times E_{D_n^x}(v)} \\ &+ \frac{E_{D_n^x}(H^{-n}) \times \sum_{v \in H^{-n}} f_n(v) \times C(v, m)}{(|H| - 1) \times \sum_{v \in V} f_n(v) \times E_{D_n^x}(v)} \\ &+ \frac{E_{D_n^x}(v) \times \sum_{v \in R} f_n(v) \times C(v, m)}{\sum_{v \in V} f_n(v) \times E_{D_n^x}(v)} \end{aligned} \quad (13)$$

The computation of all terms of Equation (13) is trivial, except the last term. The point is that the social community operator cannot simply assume that mobile users uniformly spend their time on road nodes:

$$E_{D_n^x}(r) \neq \frac{E_{D_n^x}(R)}{|R|} \quad \forall r \in R.$$

As we are using a shortest path algorithm, we give more weight to those nodes that appear more often on shortest paths between building nodes. Let  $T(v)$  be the set of all shortest paths between building nodes that go through node  $v$ . Each shortest path goes through each node at most once (There is no cycle in a shortest path). With this approximation we obtain:

$$E_{D_n^x}(r) \simeq \frac{E_{D_n^x}(R) \times |T(r)|}{\sum_{v \in R} |T(v)|}.$$

Having calculated the observed coverage by users  $Q_n$ , the operator can compute its payoff at all decision times for a given price set. By changing the initial price set, it can find the optimal price set that maximizes its cumulative payoff.

### 3.2 Pricing with Incomplete Knowledge

A social community operator with incomplete knowledge does not know the exact value of the preference parameter  $a_n$ . The operator can predict the future of the system based on the distribution of the parameter  $D^{a_n}$ . Instead of using coverage function  $C$  to calculate observed coverage  $Q_n$ , the operator uses the expected value of coverage function  $E(C)$ :

$$\begin{aligned} E C(v, m) &= Pr\{C(v, m) = 1\} \\ &= Pr\left\{ \bigcup_{v' | d(v', v) = 1} (v' \in AP[m]) \right\} \\ &= 1 - Pr\left\{ \bigcap_{v' | d(v', v) = 1} (v' \notin AP[m]) \right\} \\ &= 1 - \prod_{v' | d(v', v) = 1} Pr\{v' \notin AP[m]\} \end{aligned} \quad (14)$$

There are two different cases for the probability that an access point is not located on node  $v'$ . Any access point node in  $AP[m]$  is a public place or workplace node or a mobile user's home node. If it is a public place node or a workplace node, it is initially defined 0 or 1 in the initial

coverage of the operator, but if it is a residential node and user  $n$  is its owner at decision time  $m > 0$ :

$$\begin{aligned} Pr\{v' \notin AP[m]\} &= Pr\{n \notin N^S[m]\} \\ &= Pr\{a_n \times Q_n[m-1] - P_n \leq 0\} \\ &= Pr\left\{a_n \leq \frac{P_n}{Q_n[m-1]}\right\} \\ &= \int_0^{\frac{P_n}{Q_n[m-1]}} D^{a_n}(x) dx \end{aligned}$$

and the cumulative payoff at decision time  $m$  would be:

$$\begin{aligned} U[m] &= \sum_{k=1}^m u[k] \\ &= \sum_{k=1}^m \sum_{n \in N^S[k]} P_n \times Pr\{n \in N^S[k]\} \\ &= \sum_{k=1}^m \sum_{n \in N^S[k]} P_n \times Pr\left\{a_n > \frac{P_n}{Q_n[k-1]}\right\} \\ &= \sum_{k=1}^m \sum_{n \in N^S[k]} P_n \times \int_{\frac{P_n}{Q_n[k-1]}}^{\infty} D^{a_n}(x) dx \end{aligned}$$

The operator evaluates different price sets to find the price set that maximizes its cumulative payoff. We have compared predicted payoffs by simulation results for different prices when the operator sets the same price for all users, in Section 6.

## 4. FAIR PRICING STRATEGY

In this section, we assess semi-dynamic pricing strategies of operators. First, we define fair pricing:

**DEFINITION 3.** A pricing strategy of an operator is fair if for any user  $n$ , its price at decision time  $m-1$  is a constant factor  $c_n$  of its predicted coverage for the user at month  $m-1$ :

$$P_n[m] = c_n \times Q_n[m-1],$$

where fairness constant  $c_n$  is defined at decision time 0, and  $Q_n[m-1]$  is the predicted value of provided coverage for decision time  $m-1$ , computed at decision time 0.

As the price set is determined at decision time  $m=0$ , fair pricing strategies are semi-dynamic [6]. We prove that for each semi-dynamic pricing of an operator, there exists an equivalent fair pricing if there exists a decision time after which its user set and price set do not change. Note that there are cases where even if the operator does not change its price set, its set of subscribed users changes forever. Hence, the assumption about the existence of such a decision time is necessary. First, we find membership probabilities of mobile users.

**LEMMA 1.** The probability that any mobile user  $n$  subscribes or stays subscribed to a social community operator (with fair pricing) at decision time  $m > 0$  with fairness constant  $c_n$  is  $\int_{c_n}^{\infty} D^{a_n}(x) dx$ .

**PROOF.** The proof of is provided in appendix B.  $\square$

**THEOREM 1.** For each semi-dynamic pricing of a social community operator, there exists an equivalent fair pricing if there exists a decision time after which its user set and price set do not change.

**PROOF.** The proof is provided in appendix C.  $\square$

## 4.1 Optimal Fair Prices

The goal of any operator with fair pricing is to find the best fairness constants  $c_n$  that maximizes its payoff. The expected value of coverage on any node  $v$  is calculated in Equation (14). If node  $v$  is a public place node or a workplace node,  $Pr\{v' \notin AP^i[m]\}$  is initially defined 0 or 1 in initial coverage of the operator. Otherwise for any residential node  $v'$  with owner  $n$ , we can use Lemma 1 to calculate the probability:

$$\begin{aligned} Pr\{v' \notin AP[m]\} &= 1 - Pr\{n \in N^S[m]\} \\ &= \int_0^{c_n} D^{a_n}(x) dx \end{aligned}$$

Then the payoff of the operator at month  $m$  is:

$$\begin{aligned} u[m] &= \sum_{n \in N} P_n \times Pr\{n \in N^S[m]\} \\ &= \sum_{n \in N} c_n Q_n Pr\{n \in N^S[m]\} \\ &= \sum_{n \in N} c_n Q_n \int_{c_n}^{\infty} D^{a_n}(x) dx, \end{aligned}$$

where the provided coverage for any mobile user  $n$  can be computed as a linear function of these membership probabilities:

$$Q_n[m] = \frac{\sum_{v \in V} E_{D_n^x}(v) \times f_n(v) \times E C(v, m)}{E_{D_n^x}(f_n)}.$$

Notice that all parameters of payoff  $u[m]$  do not change after decision time 1. Therefore, the maximum payoff is:

$$u^{opt}[m] = u^{opt}[2] = \max_{\{c_1, \dots, c_{|N|}\}} (u[2]).$$

With the payoff function and its derivative with all fairness constants, the optimization can be done with any non-linear optimization method such as *Levenberg-Marquardt* [7] or *gradient descent*. It is worth mentioning that the above calculated optimal fair pricing strategy assigns different prices according to the locations of mobile users' home nodes and provided coverage.

## 5. COMMUNITY SIMULATOR

Our developed *community simulator*, with high flexibility and good performance, simulates all possible scenarios of our model with high precision [4]. The simulator supports any number of operators with any pricing strategy. Before beginning a simulation, *community simulator* generates a city map with an open source random map generator [9]. The following parameters can be modified in the *community simulator*: the size of the city, road density, adjacency distances of road nodes, map uniformity, road smoothness and building density. The parameters of the map generator are set to generate a  $4km \times 4km$  map. *Community simulator*

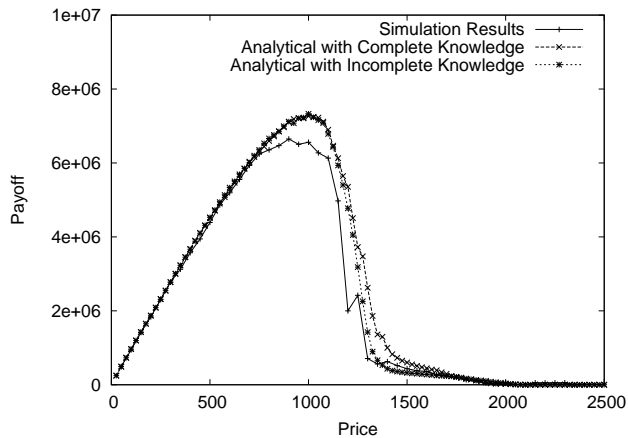


Figure 2: Predicted payoff with complete and incomplete knowledge and the occurred cumulative payoff of a social community operator in 12 months.

works with real time format  $yy/mm/dd.hh : mm : ss$ . The format was preferred to the cycle based timer, because mobile users choose their destination according to the time of day. Every 15 simulated seconds, all mobile users observe coverage. Mobile users reset all their observations at the end of each month.

Choice-destination distribution is defined in a way that results in the expected value of the number of observation times that any user  $n$  is present at a set of nodes  $L$  as:

$$E_{D_n^x}(L) = \begin{cases} 48 - 50\% & \text{for } L = \{n_h\} \\ 0 - 1\% & \text{for } L = H - \{n_h\} \\ 9 - 12\% & \text{for } L = R \\ 29 - 31\% & \text{for } L = \{n_w\} \\ 9 - 11\% & \text{for } L = J \end{cases}$$

Before the simulator timer starts, we calculate all-pair shortest paths with the *Floyd-Warshal* algorithm [10]. Therefore, there is no need to run a shortest path routing during simulation. Mobile users choose their speed for each destination randomly between 10km/h and 30km/h. After reaching their destinations, they stay from 1 to 3 hours at their destination nodes and then they choose the next destination and repeat the steps again.

## 6. NUMERICAL RESULTS

In our simulation, we generate the downtown of a densely populated city with 1104 buildings, 884 residential nodes and 2048 road nodes. A social community operator with an initial coverage of 10% of public place and workplace nodes (with an equal number of initially covered workplace and public place nodes) provides coverage in the simulated city. The distribution of parameter  $a_n$  is defined to be uniform between 1000 and 4000, over all users. The implemented social community operator can predict its payoff for different static prices with complete or incomplete knowledge at the first instance of simulation. In Figure 2, we compared predicted cumulative payoff of the operator of 12 months with its occurred payoff. The results show that with complete and incomplete knowledge, the optimal static price 1000 is predicted and is equal to the optimal occurred payoff. As we have proved in Section 4, optimal fair pricing is the op-

timal semi-dynamic pricing of a social community operator. In our simulations, we found optimal fairness constants of users by applying gradient descent. We also considered another semi-dynamic pricing with prices 0 and 1000 for the first and second months and 2000 for all the following months. With price 0 (free service), all users subscribe and the provided coverage would highly increase. The improved coverage helps to keep more users, even with the high prices of the following months. Figure 3 shows the monthly payoff, the cumulative payoff, and the number of subscribed users with these two pricing strategies during 4 years. We observe that the proposed optimal fair pricing strategy outperforms the considered semi-dynamic pricing strategy and improves the cumulative payoff about 10%. Moreover, the number of subscribed users and the monthly payoff are more stable using the proposed optimal fair pricing strategy.

## 7. CONCLUSIONS

We have computed optimal strategies in different scenarios of wireless social community operators with complete and incomplete knowledge. The required information of the proposed model can be gathered from traditional statistical studies (e.g. subscription forms) and/or data mining. To gain complete knowledge, operators need to distinguish personal subscription preferences.

We have shown that social community operators should set different subscription fees for users to maximize their payoffs. The reason is that mobile users observe different wireless coverage based on their preferred locations. Furthermore, lower subscription fees should be adjusted for owners of houses (potential AP locations) near public places or workplaces. In terms of future work, contract-based subscriptions and throughput of the network could also be considered. Moreover, simulations can be done on maps of real cities with statistical data as input.

## 8. REFERENCES

- [1] EV-DO. [http://www.cdg.org/technology/3g\\_1xEV-DO.asp](http://www.cdg.org/technology/3g_1xEV-DO.asp).
- [2] Fon friend. <http://www.fon.com/en/info/fonFriends>.
- [3] Fon wireless access provider. <http://www.fon.com>.
- [4] EPFL-IC-LCA1. Wireless community simulator. <http://wiki.epfl.ch/wsc>.
- [5] M. H. Manshaei, J. Freudiger, M. Felegyhazi, P. Marbach, and J.-P. Hubaux. On Wireless Social Community Networks. In *IEEE INFOCOM*. IEEE, 2008.
- [6] S. Markovitch and Y. Sella. Learning of resource allocation strategies for game playing. *Computational Intelligence*, 12(1):88–105, 1996.
- [7] W.H. Press et al. *Numerical recipes in C*. Cambridge University Press Cambridge, 1992.
- [8] J. Tian, J. Hähner, C. Becker, I. Stepanov, and K. Rothermel. Graph-based mobility model for mobile ad hoc network simulation. In *Proceedings of the 35th Annual Simulation Symposium*, 2002.
- [9] Random Map Generator v1.0 User's Guide. <http://www.cs.auckland.ac.nz/~roboteam/documents/RandomMapGenerator.pdf>.
- [10] Douglas B. West. *An Introduction to Graph Theory*. Prentice Hall, 1996.

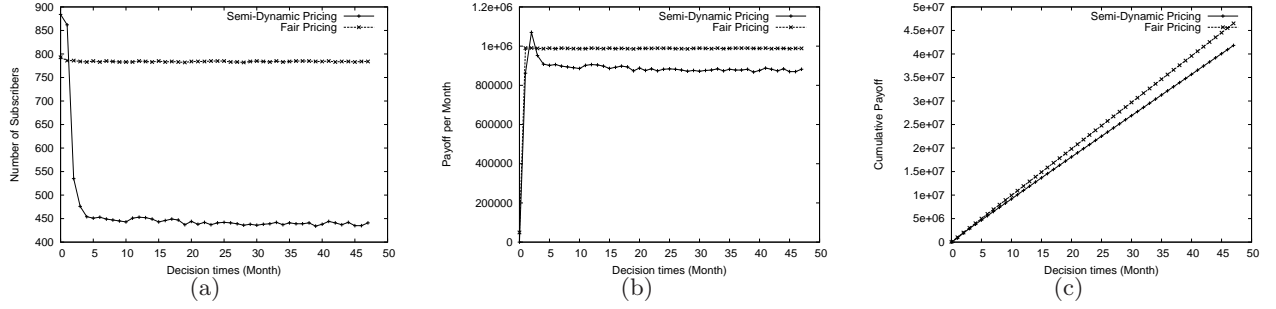


Figure 3: Performance analysis of wireless social community operator with our developed *community simulator*. Fair pricing and a semi-dynamic pricing ( $P[0] = 0, P[1] = 1000, P[2^+] = 2000$ ) have been used for four years (48 months): (a) Number of subscribed users per month, (b) Monthly payoff of social community operator, (c) Cumulative payoff of operator.

## APPENDIX

### A. TABLE OF SYMBOLS

| Symbol           | Definition   |
|------------------|--|
| $AP[m]$          | Set of access points at decision time $m$  |
| $B$              | Set of building nodes  |
| $C(v, m)$        | Coverage function on node $v$ at decision time $m$                               |
| $D_n^{ch}(v, t)$ | Destination-choice distribution for user $n$ on node $v$ at observation time $t$ |
| $D_n^x(v)$       | Presence distribution for user $n$ on node $v$                                   |
| $d(v, v')$       | Distance function for node $v$ and $v'$  |
| $d_e$            | Effective range of access points   |
| $f_n(v)$         | frequency of observations of user $n$ on node $v$                                |
| $H$              | Set of residential nodes   |
| $J$              | Set of public place nodes  |
| $M$              | System map   |
| $N$              | Set of all users   |
| $N^S[m]$         | Set of subscribed users at decision time $m$                                     |
| $P$              | Set of all price sets  |
| $P[m]$           | Set of all prices at decision time $m$   |
| $P_n[m]$         | Price for user $n$ at decision time $m$  |
| $Q_n[m]$         | Provided coverage in month $m$   |
| $R$              | Set of road nodes  |
| $T(v)$           | Set of shortest paths that go through node $v$                                   |
| $T_o$            | Number of observation times in one month   |
| $U[m]$           | Cumulative payoff of the operator at decision time $m$                           |
| $u[m]$           | Payoff of the operator at month $m$  |
| $u_n[m]$         | Payoff of user $n$ at decision time $m$  |
| $V$              | Set of all nodes   |
| $W$              | Set of workplace nodes   |

### B. PROOF OF LEMMA 1

PROOF. According to Definition 3, the probability that mobile user  $n$  subscribes or stays subscribed to the fair operator at decision time  $m > 0$  is:

$$\begin{aligned}
 Pr\{n \in N^S[m]\} &= Pr\{a_n \times Q_n[m-1] - P_n[m] > 0\} \\
 &= Pr\{a_n \times Q_n[m-1] > c_n \times Q_n[m-1]\} \\
 &= Pr\{a_n \times Q_n[m-1] > c_n \times Q_n[m-1]\} \\
 &= Pr\{a_n > c_n\} \\
 &= \int_{c_n}^{\infty} D^{a_n}(x) dx
 \end{aligned}$$

□

### C. PROOF OF THEOREM 1

PROOF. According to Equation (11), the observed coverage  $Q_n[m]$  for any user  $n$  at decision time  $m$  is a function of the coverage  $C$  provided by the operator at the decision time and the frequency of observations  $f_n$ . We also know that coverage function  $C$  at decision time  $m$  is a function of its initial access point locations  $AP[0]$  and the set of subscribed users  $N^S[m]$  at the decision time. Therefore, the observed coverage  $Q_n[m]$  is a function of its initial access point locations  $AP[0]$ , the set of subscribed users  $N^S[m]$  at the decision time and the frequency of observations  $f_n$ . Let  $\tau$  be the decision time after which its user set and price set do not change. Hence, After decision time  $\tau$ :

$$m > \tau : Q_n[m] = Q_n[\tau],$$

and the probability that any user  $n$  subscribe or stay subscribed to the operator would be:

$$\begin{aligned}
 Pr\{n \in N^S[m]\} &= Pr\{a_n \times Q_n[m-1] > P_n[m]\} \\
 &= Pr\left\{a_n > \frac{Q_n[m-1]}{P_n[m]}\right\} \\
 &= \int_{\frac{P_n[m]}{Q_n[m-1]}}^{\infty} D^{a_n}(x) dx \\
 &= \int_{\frac{P_n[\tau]}{Q_n[\tau]}}^{\infty} D^{a_n}(x) dx \quad (15)
 \end{aligned}$$

Assume  $N^f, Q_f, P_f, u^f$  and  $U^f$  denote the set of subscribed

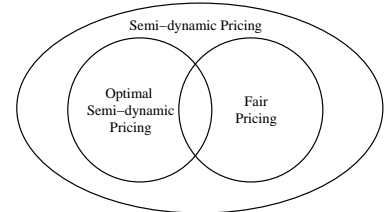


Figure 4: The set of fair pricing strategies contains a non-empty subset of optimal semi-dynamic pricing strategies.

users, provided quality of service, price, payoff and cumulative payoff of the operator with fair pricing, respectively.

If the operator uses fair pricing and assigns its fairness constant  $c_n$  for user  $n$  with:

$$c_n = \frac{P_n[\tau]}{Q_n[\tau]},$$

by using Lemma 1 and Equation (15), we have:

$$\begin{aligned} m > \tau : Pr\{n \in N^f[m]\} &= \int_{c_n}^{\infty} D^{a_n}(x) dx \\ &= \int_{\frac{P_n[\tau]}{Q_n[\tau]}}^{\infty} D^{a_n}(x) dx \\ &= \int_{\frac{P_n[\tau]}{Q_n[\tau]}}^{\infty} D^{a_n}(x) dx \\ &= Pr\{n \in N^S[m]\} \end{aligned}$$

Therefore, the expected value of the user sets with the two pricing strategies are the same:

$$m > \tau : E N^f[m] = E N^S[m]$$

Because of the same expected value of user sets we also obtain:

$$m > \tau : Q_n[m] = Q_n^f[m].$$

Therefore, the payoff of the operator at decision time  $m > \tau$  when it uses fair pricing would be:

$$\begin{aligned} u^f[m] &= \sum_{n \in N} P_n^f[m] \times Pr\{n \in N^f[m]\} \\ &= \sum_{n \in N} \frac{P_n[\tau]}{Q_n[\tau]} \times Q_n^f[m] \times \int_{\frac{P_n[\tau]}{Q_n[\tau]}}^{\infty} D^{a_n}(x) dx \\ &= \sum_{n \in N} P_n[\tau] \times \int_{\frac{P_n[\tau]}{Q_n[\tau]}}^{\infty} D^{a_n}(x) dx \\ &= u[m] \end{aligned}$$

Now we check the equivalence condition :

$$\begin{aligned} \lim_{m \rightarrow \infty} \frac{U^f[m]}{U[m]} &= \lim_{m \rightarrow \infty} \frac{\sum_{k=1}^m u^f[k]}{\sum_{k=1}^m u[k]} \\ &= \lim_{m \rightarrow \infty} \frac{\sum_{k=1}^{\tau} u^f[k] + \sum_{k=\tau+1}^m u^f[k]}{\sum_{k=1}^{\tau} u[k] + \sum_{k=\tau+1}^m u[k]} \\ &= \lim_{m \rightarrow \infty} \frac{\sum_{k=\tau+1}^m u^f[k]}{\sum_{k=\tau+1}^m u[k]} \\ &= \lim_{m \rightarrow \infty} \frac{\sum_{k=\tau+1}^m u[k]}{\sum_{k=\tau+1}^m u[k]} \\ &= 1 \end{aligned}$$

This theorem is illustrated with the Venn diagram in Figure 4. In summary, the set of fair pricing strategies contains at least an optimal pricing strategy among semi-dynamic pricing strategies.

□