

Nonthermal Plasma Abatement of Trichloroethylene Enhanced by Photocatalysis

Ch. Subrahmanyam, M. Magureanu,[†] D. Laub, A. Renken, and L. Kiwi-Minsker*

Ecole Polytechnique Fédérale de Lausanne, CH-1015 Lausanne, Switzerland

Received: October 13, 2006; In Final Form: January 16, 2007

Abatement of trichloroethylene (TCE, 250 ppm in air) was studied in a novel nonthermal plasma (NTP) dielectric barrier discharge reactor with an inner electrode made of sintered metal fibers (SMF). The SMF electrodes modified with TiO₂ and MnO₂ were observed to be catalytically active. Their efficiency in TCE decomposition was compared with a Cu inner electrode. The SMF electrode modified with MnO₂ and TiO₂ catalyst effectively destroys TCE due to the synergy between plasma excitation of the TCE molecules and their catalytic oxidation. The latter process was observed to be further enhanced by photocatalysis since TiO₂ absorbs the UV light produced by the NTP. These innovative TiO₂-modified SMF electrodes were characterized by X-ray photoelectron spectroscopy (XPS) and transmission electron microscopy (TEM), confirming formation of titania anatase, whereas the emission spectrum of the plasma showed the presence of ultraviolet light.

Introduction

Nonthermal plasma (NTP) is able to destroy volatile organic compounds (VOCs) present in gas streams at low concentration with relatively low energy consumption as compared to the conventional thermal and thermocatalytic methods.^{1–4} However, use of the NTP technique is limited due to formation of undesired byproducts like CO, O₃, and NO_x by plasma discharge. A combination of NTP and heterogeneous catalysis increases the efficiency of VOC destruction per unit of energy input.^{5–9} Trichloroethylene (TCE) is a widely used industrial solvent whose abatement by NTP results in formation of undesired products like phosgene, leading to low selectivity toward total oxidation. Nonthermal plasma in air produces ultraviolet (UV) light, mainly due to the radiative transitions of excited nitrogen molecules.^{10,11} Earlier attempts combining NTP with a TiO₂ photocatalyst to abate VOCs indicate that the contribution of photocatalysis induced by UV light from the plasma was not significant.^{12–16} Nevertheless, the right positioning of the photocatalyst in the reactor within the discharge is important to efficiently utilize the UV light emitted by the plasma. Recently, we reported a novel dielectric barrier discharge (DBD) reactor provided with the catalytic inner electrode.^{17,18} The catalytic electrode was made of sintered metal fibers (SMF) modified by transition-metal (Mn, Co) oxides. This reactor shows an improved efficiency during VOCs abatement with higher selectivity toward total oxidation products as compared to the conventional copper (Cu) electrode.¹⁷ The present study aims at the abatement of TCE using the catalytic NTP reactor with the SMF electrode modified by TiO₂ anatase. Synergy is expected between plasma excitation of the reacting molecules and the photocatalytic action of TiO₂. The performance was compared with MnO₂/SMF and Cu electrodes.

Experimental Section

The dielectric barrier discharge (DBD) was generated in a cylindrical quartz tube with an inner diameter of 19 mm. The

silver paste painted on the outer surface of the quartz tube acts as the outer electrode, and the cylindrical tube of the SMF filter serves as the inner electrode.¹⁷ The novelty of the DBD nonthermal plasma (NTP) reactor is that the SMF acts as the inner electrode and the catalyst. The discharge length was 10 cm, and the discharge gap was fixed at 1.25 mm. The catalytic SMF electrode was connected to an alternating current (AC) high voltage through a copper rod as shown in Figure 1. The specific input energy (SIE) in the range 140–1100 J/L was varied by changing the amplitude of the AC high voltage (12.5–22.5 kV) at a constant frequency of 250 Hz. The V-Q Lissajous method was used to determine the discharge power (W) from which the SIE was calculated.

The TCE (250 ppm in air) was introduced into the reactor with a total flow of 0.7 l (STP)/min that corresponds to a gas residence time of 2.4 s. The concentration of TCE was monitored with a gas chromatograph (Shimadzu 14 B with a SP-5 capillary column), whereas a gas chromatograph equipped with a mass spectrometer (TRACE DSQ) was used to identify the byproducts formed. An infrared detector (Siemens Ultramat 21 P) was used to monitor the CO and CO₂ outlet concentration. Ozone formation was measured with an UV absorption detector (API-450 NEMA). The emission spectrum of the discharge at 20 kV was measured with a SM 240 spectrometer (CVI Spectral Products) with a Sony ILX511 CCD linear array detector.

TiO₂/SMF and TiO₂/MnO₂/SMF were prepared by precipitation of Ti(IV) bis(ammonium lactato) dihydroxide, 50 wt % solution in water at 333 K for 3 h, whereas MnO₂ was deposited by impregnation followed by drying at room temperature and calcination in air at 773 K for 5 h.¹⁷ The TiO₂/SMF and MnO₂/SMF catalysts contain 3 wt % of the metal oxide, whereas the TiO₂/MnO₂/SMF contains 1 and 3 wt % of TiO₂ and MnO₂, respectively. XPS analysis confirmed formation of MnO₂ on SMF.¹⁷ The metal-oxide-modified SMF filters were subjected to electrical hot press treatment to obtain the desired cylindrical form. XPS analysis of TiO₂/SMF was carried out using an Axis Ultra ESCA system (Kratos, Manchester) with monochromatic Al K α radiation (1486.6 eV), whereas the TEM images and diffraction patterns were recorded with a Philips CM300UT FEG (300 kV).

* To whom correspondence should be addressed. E-mail: liubov.kiwi-minsker@epfl.ch.

[†] National Institute for Lasers, Plasma and Radiation Physics, Bucharest, Romania.

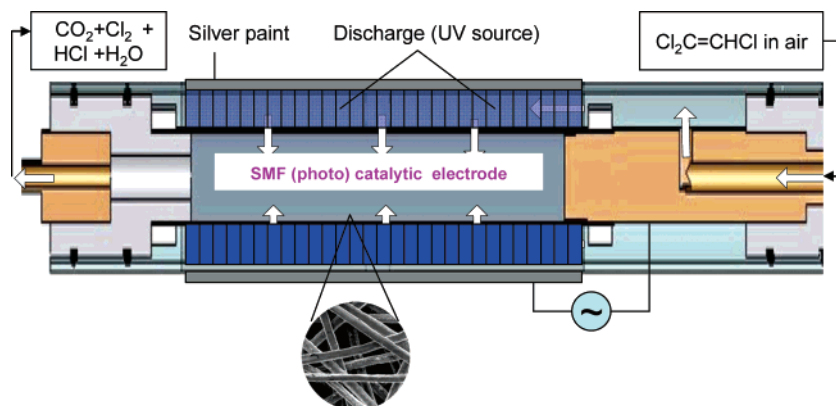


Figure 1. Schematic representation of the DBD plasma catalytic reactor with magnified SMF electrode (SEM image).

Results and Discussion

The XPS spectrum of TiO_2/SMF shows two peaks centered at 458.3 and 464 eV corresponding to Ti $2p_{3/2}$ and $2p_{1/2}$, respectively. Similar peaks were observed for $\text{TiO}_2/\text{MnO}_2/\text{SMF}$, indicating formation of titania in both cases. This was further supported by TEM studies. Figure 2a and b presents TEM images of the TiO_2/SMF and $\text{TiO}_2/\text{MnO}_2/\text{SMF}$ catalytic electrodes. The crystallite size in the former sample was ~ 25 nm, whereas in the later sample the size was < 10 nm. The diffraction pattern of the respective samples is shown in the inset, confirming formation of TiO_2 anatase.

During the destruction of TCE with TiO_2/SMF electrodes, the effect of the UV light can be expected only if NTP emits radiation in the range $\lambda \leq 370\text{--}380$ nm, which is equivalent to the band gap of anatase (3.2 eV). A typical emission spectrum of the discharge in the wavelength range 250–500 nm originating from excited species of nitrogen^{19–21} is shown in Figure 3. The high-energy electrons generated in the plasma excite and ionize the nitrogen molecules, leading to the N_2 ($\text{C}^3\Pi_u$) and N_2^+ ($\text{B}^2\Sigma_u^+$) electronic states. De-excitation of these states occurs due to radiative emission and molecular quenching. Hence, decay of the $\text{C}^3\Pi_u$ state to $\text{B}^3\Pi_g$ (N_2 , $\text{C}^3\Pi_u \rightarrow \text{B}^3\Pi_g$) induces a second positive system (SPS) with the most intense band corresponding to the (0–0) transition at 337 nm. Similarly, decay of the $\text{B}^2\Sigma_u^+$ state toward $\text{X}^2\Sigma_g^+$ (N_2^+ , $\text{B}^2\Sigma_u^+ \rightarrow \text{X}^2\Sigma_g^+$) results in the first negative system (FNS) corresponding to the (0–0) transition at 391 nm.^{19,20} Therefore, emission from excited nitrogen molecules (N_2^*) is in the range of the band gap of the TiO_2 catalyst.

The efficiency of the TiO_2/SMF electrodes was tested during the destruction of TCE (250 ppm in air) as a function of SIE, which was varied in the range 140–1100 J/L by varying the voltage (12.5–22.5 kV) at 250 Hz. The results are presented in Figure 4. For comparison, the experiments were also carried out with a copper electrode, which did not show any difference in activity compared to the SMF unmodified electrode. For all the SIE applied, starting from 140 J/L, $\sim 100\%$ conversion of TCE was achieved. However, during the abatement of VOCs, total oxidation is desired. During the present study GC-MS confirms formation of chlorinated byproducts like dichloroacetyl chloride ($\text{CHCl}_2\text{-CClO}$, DCAC), carbon tetrachloride (CCl_4), trichloroacetaldehyde ($\text{Cl}_3\text{C-CHO}$, TCAA), Cl_2 , and HCl , but they were not quantified due to the very low concentration. Their removal from the reactor outlet could be done by passing the air steam via a wet scrubber. An interesting observation is that formation of phosgene was not observed. Figure 4 presents the selectivity to the gaseous products CO_x ($\text{CO} + \text{CO}_2$) formed over SMF electrodes. With the Cu electrode at 140 J/L the

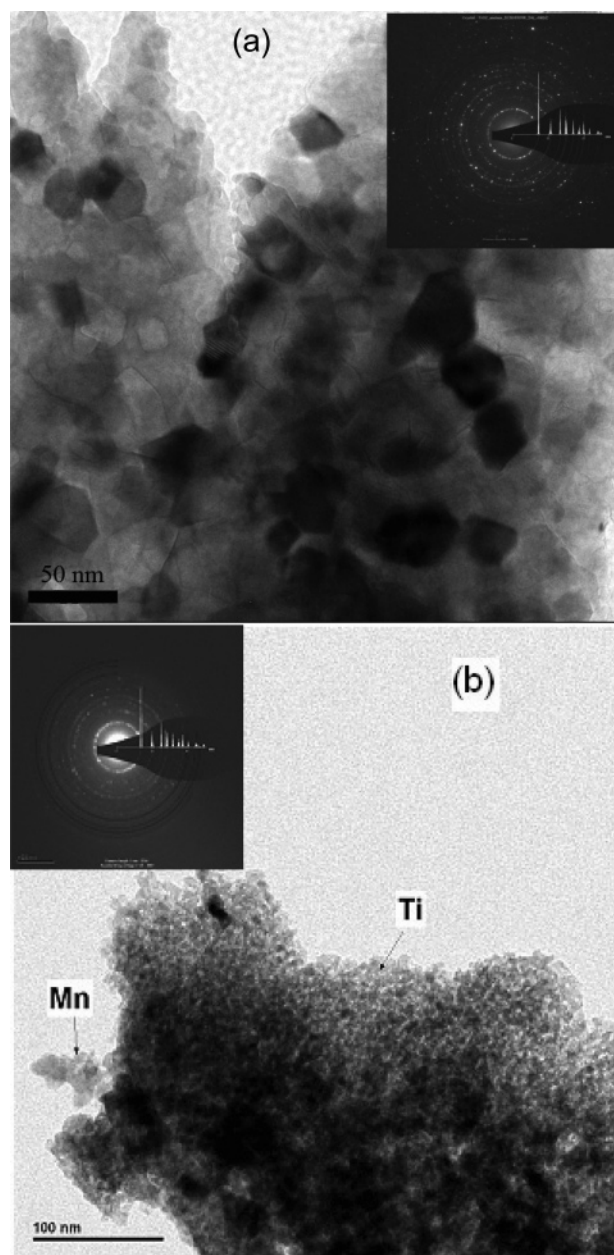


Figure 2. TEM image of (a) TiO_2/SMF (top) and (b) $\text{TiO}_2/\text{MnO}_2/\text{SMF}$ (bottom).

selectivity observed to CO_x was only $\sim 55\%$ and 65% with $\text{TiO}_2/\text{MnO}_2/\text{SMF}$. With increasing SIE to 830 J/L, $\sim 100\%$ CO_x selectivity was achieved with $\text{TiO}_2/\text{MnO}_2/\text{SMF}$.

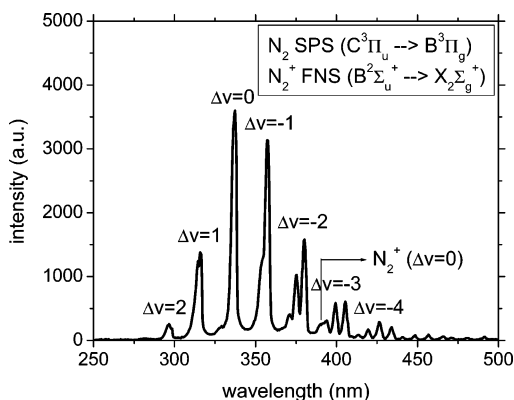


Figure 3. UV-vis emission spectrum of plasma discharge at 20 kV.

Figure 4 also presents the selectivity to CO_2 , showing the effect of metal oxide modification (the effect of catalytic additive). At any SIE the metal-oxide-modified SMF electrodes showed higher CO_2 selectivity compared to the Cu electrode. However, with the MnO_2 -modified electrode, CO_2 selectivity is significantly higher. This may be due to ozone in-situ decomposition on the MnO_2 catalyst surface.

To understand the role of ozone in the reaction, its concentration was monitored at the reactor outlet. With the Cu electrode, at 140 J/L, ~ 1300 ppm of ozone was formed, which decreases with increasing SIE. At 575 J/L (17.5 kV), with Cu, SMF, and TiO_2/SMF electrodes, ~ 750 ppm of ozone was formed, whereas with MnO_2 and $\text{TiO}_2/\text{MnO}_2/\text{SMF}$ electrodes no ozone was detected (~ 0 ppm). This suggests that the observed increased efficiency of the MnO_2/SMF electrode is due to in-situ decomposition of ozone, which leads to formation of atomic oxygen.^{1,6,18} With the TiO_2/SMF electrode, the concentration

of ozone detected was similar to that obtained with the Cu electrode (750 ppm). Therefore, the improved performance with TiO_2/SMF over Cu cannot be attributed to O_3 decomposition on the catalyst. Generally, thermal activation of TiO_2 catalyst requires a temperature of 573–673 K, whereas during the present study, the outlet gas temperature never exceeded ~ 310 K. Optical emission spectroscopy measurements in DBD also confirmed that the gas temperature in the plasma filaments remains close to room temperature.^{22,23} Hence, the better performance of TiO_2/SMF over Cu electrode might not be due to thermal activation of TiO_2 but rather due to the effect of the UV light coming from NTP. In order to confirm this, MnO_2/SMF was modified with TiO_2 , and the resulting $\text{TiO}_2/\text{MnO}_2/\text{SMF}$ catalytic electrode at 1100 J/L increased CO_2 selectivity to $\sim 80\%$, versus $\sim 65\%$ with MnO_2/SMF (Figure 4). This synergism is due to a cooperation of oxides having different catalytic functions.

When the TiO_2 anatase is irradiated by UV light with energy greater than the band gap (~ 3.2 eV, $\lambda \leq 370$ nm), excitation of valance-band electrons into the conduction band takes place, resulting in formation of holes in the valance band. Both the holes and the photoelectrons migrate to the TiO_2 surface, where they either recombine or participate in redox reactions with adsorbed species like H_2O and O_2 . The hole oxidizes adsorbed water to hydroxyl radicals, which are the potential oxidants in photocatalysis, whereas the photoelectrons reduce O_2 to superoxide.

The NTP decomposes TCE into several intermediates, which adsorb on the TiO_2 surface of the catalytic electrode. These intermediates may then be oxidized by the hydroxyl radicals and superoxide. Under ambient conditions, the titania surface adsorbs water in sufficient quantity to allow the reaction to

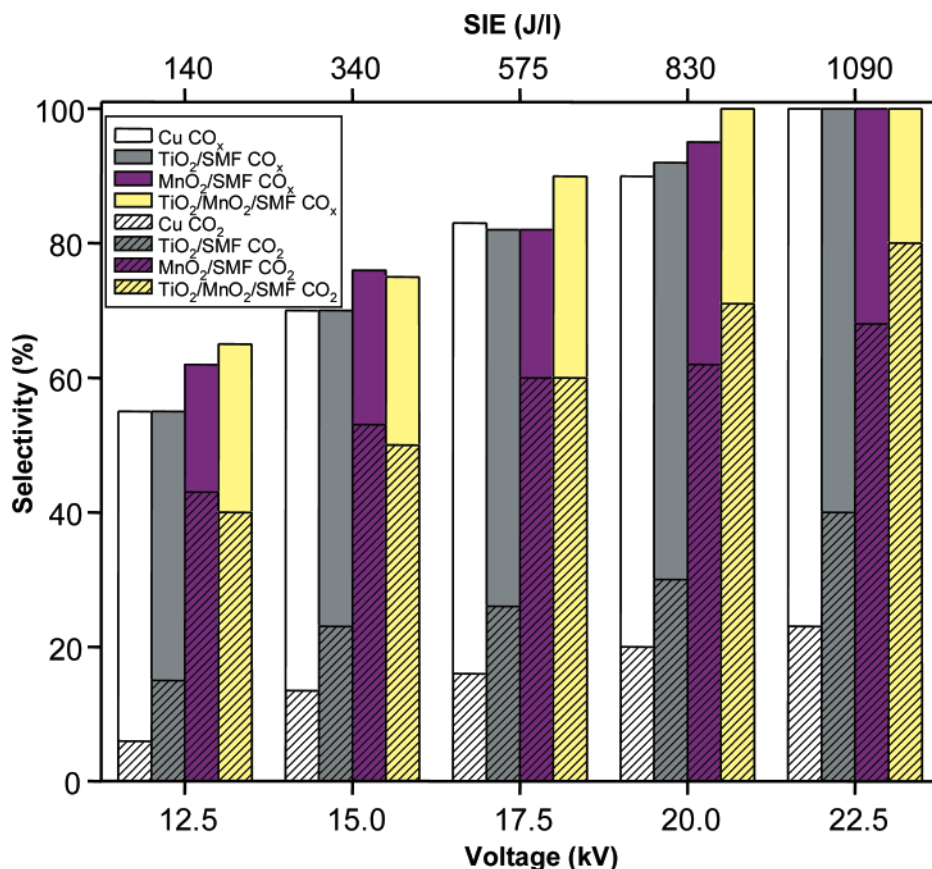


Figure 4. Influence of catalytic electrode modification by MnO_2 and TiO_2 oxides (the effect of catalytic additive) as a function of specific input energy (SIE) on the selectivity to CO_x and CO_2 (250 ppm of TCE in air, 12.5–22.5 kV, and 250 Hz); the TCE conversion was 100%.

proceed. In order to confirm this observation, water was injected (1 mL/h) into the DBD reactor; however, a significant difference in the activity was not noticed. Hence, for the destruction of diluted TCE (250 ppm), the TiO₂ surface-bound water was sufficient to initiate the reaction, and the H₂O generated within the TCE oxidation time replenished the TiO₂ surface.^{24–27} A similar conclusion was reported in an earlier study of the photocatalytic destruction of TCE containing only traces of water.²⁷

Several researchers have reported the photocatalytic action of TiO₂ anatase during the plasma decomposition of VOCs, supporting the observation made in the present study.^{20,28–30} Interestingly, Ogata et al. observed an improved efficiency of a photoinactive TiO₂–rutile catalyst during the destruction of fluorocarbons, which they attributed to the surface oxygen atoms.¹⁶ Hence, during the present study, contribution of surface oxygen atoms formed by discharge cannot be ruled out. Moreover, the intensity of the light cannot be quantified under the present conditions since the dielectric barrier discharge is a filamentary discharge and not a conventional UV source like an UV lamp. The spectrum was collected by an optical fiber, so the radiation emitted by a number of microdischarges was averaged over both time and space. At the same time, the emission spectrum showed intense bands in the UV region, suggesting photocatalysis over TiO₂ anatase. Therefore, the observed increased activity might be due to photocatalytic action in the presence of UV light as well as activation of TiO₂ by plasma discharge.

Thermal oxidation of chlorinated VOCs is usually carried out at temperatures >1000 °C. For catalytic oxidation, a minimum TCE concentration of 1000 ppm is mandatory in order to maintain autothermal conditions. Catalytic destruction of 1000 ppm of TCE was reported over various acidic catalysts like H–Y zeolite, Al₂O₃, tungsta–alumina, and silica–alumina in the temperature range 400–650 °C with a selectivity to total oxidation ≈ 50–60%.^{31–34} Likewise, bimetallic Cr–Cu-supported zeolites and Mn-containing perovskites in the temperature range 500–650 °C showed ~60% CO₂ selectivity with poor carbon balance, giving many undesired byproducts.^{34–35} Hence, there is a need for alternative methods since byproduct formation is unacceptable. During the present study (Figure 4), ~100% carbon balance toward CO_x formation was achieved with the SIE ≈ 830 J/L. This supply of energy can heat 1 L of air up to ~625 °C in the same temperature range as during the catalytic process. The selectivity of ~70% to CO₂ was achieved with the TiO₂/MnO₂/SMF catalytic electrode, exceeding the selectivity of the catalytic process. The remaining CO in the stream is easy to oxidize to CO₂ by well-known catalytic converters, which could be put at the outlet after the plasma reactor. It is worth mentioning that ~100% conversion (complete destruction of TCE) was achieved even at 140 J/L.

Conclusions

The DBD nonthermal plasma reactor with a catalytic SMF inner electrode containing both MnO₂ and TiO₂ catalyst on the surface effectively destroys trichloroethylene, giving CO_x and H₂O. The synergy between plasma excitation of the TCE molecules and their catalytic oxidation was observed to be further enhanced by photocatalysis since TiO₂ absorbs the UV light produced by the NTP. Destruction of TCE can be achieved by the NTP technique at lower consumption of energy compared

to thermocatalytic methods, but it still needs to be improved in view of achieving total oxidation at low SIE.

Acknowledgment. The authors thank the Swiss National Science Foundation for financial support within the SCOPES program. Technical assistance of Mr. Edy Casali, Mr. Andre Fattet, and Mr. Xanthopoulos at the EPFL is highly appreciated.

References and Notes

- (1) Magureanu, M.; Mandache, N. B.; Eloy, P.; Gaigneaux, E. M.; Parvulescu, V. I. *Appl. Catal. B: Environ.* **2005**, *61*, 13.
- (2) Holzer, F.; Roland, U.; Kopinke, F. D. *Appl. Catal. B: Environ.* **2002**, *38*, 163.
- (3) Penetratnte, B.; Hsiao, M. C.; Bardsley, J. N.; Merrit, B. T.; Vogtlin, G. E.; Kuthi, A.; Burkhart, C. P.; Bayless, J. R. *Plasma Sources Sci. Technol.* **1997**, *6*, 251.
- (4) Yamamoto, T.; Mizuno, K.; Tamori, I.; Ogata, A.; Nifuku, M.; Michalska, M.; Prieto, G. *IEEE Trans. Ind. Appl.* **1996**, *32*, 100.
- (5) Ogata, A.; Mizuno, K.; Kushiya, S.; Yamamoto, T. *Plasma Chem. Plasma Process.* **1999**, *19*, 383.
- (6) Futamura, S.; Einaga, H.; Kabashima, H.; Jwan, L. Y. *Catal. Today* **2004**, *89*, 89.
- (7) Kim, H. H.; Oh, S. M.; Ogata, A.; Futamura, S. *Appl. Catal. B: Environ.* **2005**, *56*, 213.
- (8) Roland, U.; Holzer, F.; Kopinke, F. D. *Appl. Catal. B: Environ.* **2005**, *58*, 217.
- (9) Roland, U.; Holzer, F.; Kopinke, F. D. *Appl. Catal. B: Environ.* **2005**, *58*, 227.
- (10) Kraus, M.; Eliasson, B.; Kogelschatz, U.; Wokaun, A. *Phys. Chem. Chem. Phys.* **2001**, *3*, 294.
- (11) Lee, B. Y.; Park, S. H.; Lee, S. C.; Kang, M.; Choung, S. J. *Catal. Today* **2004**, *93–95*, 769.
- (12) Futamura, S.; Zhang, A. H.; Yamamoto, T. *J. Electrostat.* **1997**, *42*, 51.
- (13) Oda, T.; Yamaji, K.; Takahashi, T. *IEEE Trans. Ind. Appl.* **2004**, *40* (2), 430.
- (14) Oda, T.; Takahashi, T.; Yamaji, K. *IEEE Trans. Ind. Appl.* **2004**, *40* (5), 1249.
- (15) Sano, T.; Negishi, N.; Sakai, E.; Matsuzawa, S. *J. Mol. Catal. A: Chem.* **2006**, *245*, 235.
- (16) Ogata, A.; Kim, H. H.; Futamura, S.; Kushiya, S.; Mizuno, K. *Appl. Catal. B: Environ.* **2004**, *53*, 175.
- (17) Subrahmanyam, Ch; Magureanu, M.; Renken, A.; Kiwi-Minsker, L. *Appl. Catal. B: Environ.* **2006**, *65*, 150.
- (18) Subrahmanyam, Ch; Renken, A.; Kiwi-Minsker, L. *Appl. Catal. B: Environ.* **2006**, *65*, 157.
- (19) Spyrou, N.; Manassis, C. *J. Phys. D: Appl. Phys.* **1989**, *22*, 120.
- (20) Kim, H. H.; Lee, Y. H.; Ogata, A.; Futamura, S. *Catal. Commun.* **2003**, *4*, 347.
- (21) Parigger, C.; Plemmons, D. H.; Hornkohl, J. P.; Lewis, J. W. L. *Appl. Opt.* **1995**, *34* (18), 3331.
- (22) Eliasson, B.; Kogelschatz, U. *IEEE Trans. Plasma Sci.* **1991**, *19*, 1063.
- (23) Simek, M.; DeBenedictis, S.; Dilecce, G.; Babicky, V.; Clupek, M.; Sunka, P. *J. Phys. D: Appl. Phys.* **2002**, *35*, 1981.
- (24) Dibble, L. A.; Raupp, G. B. *Catal. Lett.* **1990**, *4*, 345.
- (25) Peral, J.; Ollis, D. F. *J. Catal.* **1992**, *136*, 554.
- (26) Alberici, R. M.; Jardim, W. F. *J. Adv. Oxi. Technol.* **1998**, *3* (2), 182.
- (27) Sitkiwitz, S.; Heller, A. *New J. Chem.* **1996**, *20*, 233.
- (28) Kang, M.; Kim, B. J.; Cho, S. M.; Chung, C.; Kim, B.; Han, G. Y.; Yoon, K. *J. Mol. Catal. A: Chem.* **2002**, *180*, 125.
- (29) Li, D.; Yakushiji, D.; Kanazawa, S.; Ohkubo, T.; Namoto, Y. *J. Electrostat.* **2002**, *55*, 311.
- (30) Park, D. W.; Yoon, S. H.; Kim, G. J.; Sekiguchi, H. *J. Ind. Eng. Chem.* **2002**, *18*, 393.
- (31) Finocchio, E.; Sapienza, G.; Baldi, M.; Busca, G. *Appl. Catal. B: Environ.* **2004**, *51*, 143.
- (32) Gutierrez-Ortiz, J. I.; Lopez-Fonseca, R.; Aurrekoetxea, U.; Gonzalez-Velasco, J. R. *J. Catal.* **2003**, *218*, 148.
- (33) Intriago, L.; Diaz, E.; Ordenez, S.; Vega, A. *Microporous Mesoporous Mater.* **2006**, *91*, 161.
- (34) Abdullah, A. Z.; Bakar, M. Z. A.; Bhatia, S. *J. Hazard. Mater.* **2006**, *B129*, 39.
- (35) Stephan, K.; Hackenberger, M.; Kiessling, D.; Wendt, G. *Chem. Eng. Technol.* **2002**, *25*, 5.